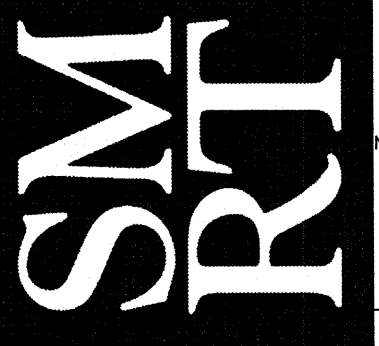


- NOTE:**
- SEE SHEET E-001 FOR LEGEND AND GENERAL NOTES.
  - ALL SMOKE DETECTORS TO BE INTERLOCKED WITHIN EACH APARTMENT.

**ESB**  
**E.S. BOULOS CO**  
 ELECTRICAL CONTRACTORS

45 BRADLEY DRIVE  
 WESTBROOK, ME 04092  
 TEL: (207) 464-3706  
 FAX: (207) 464-1833

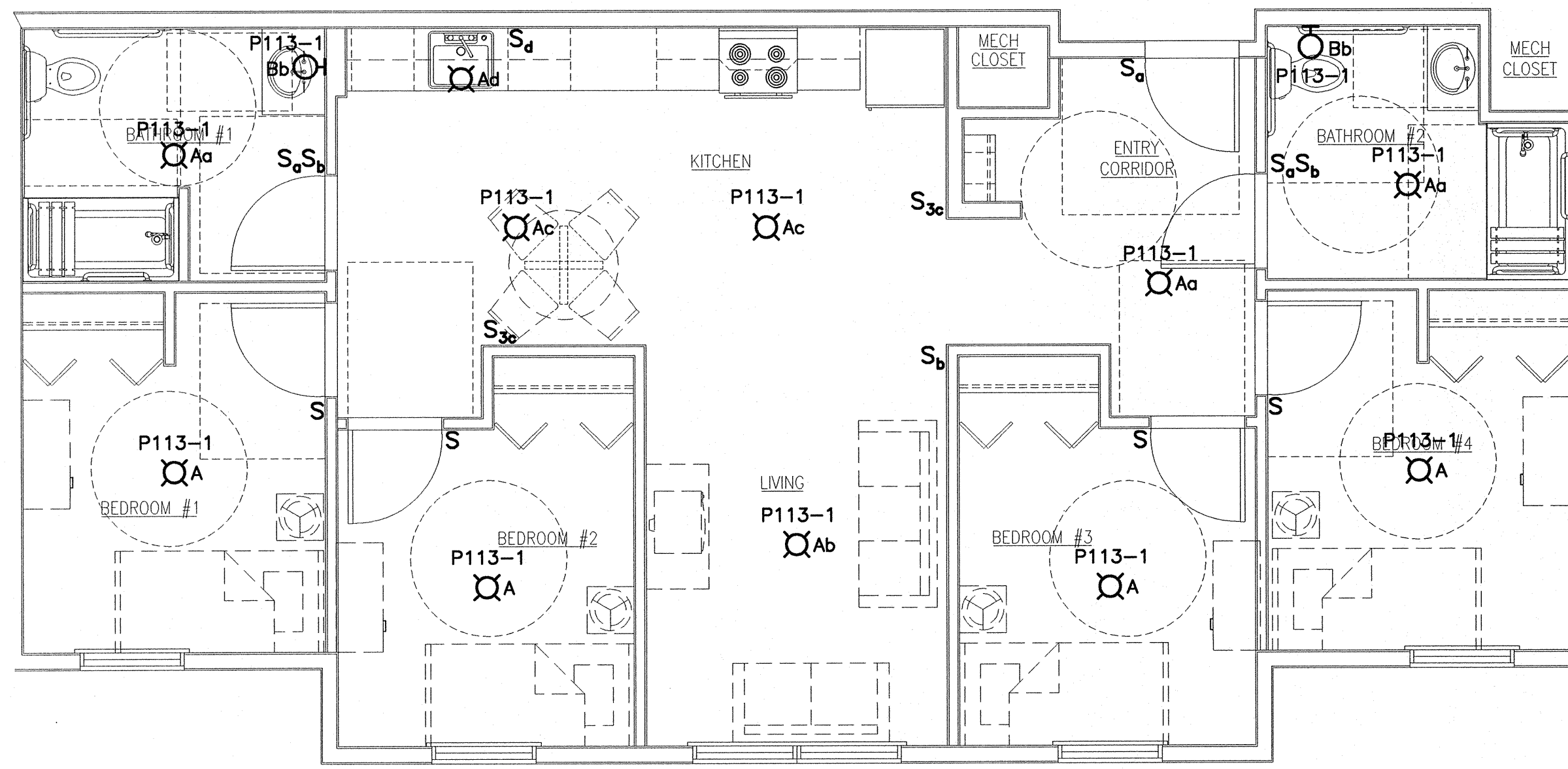
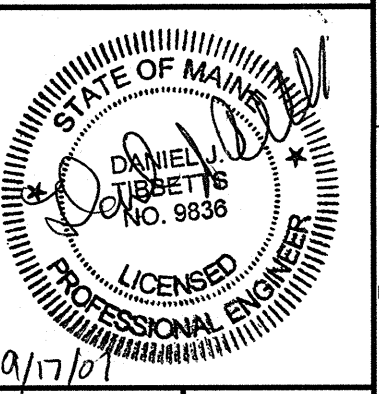


ARCHITECTURE ENGINEERING PLANNING  
 SMART  
 144 Fore Street/P.O. Box 68  
 Portland, Maine 04104  
 tel. (207) 772-3846  
 fax. (207) 772-1070

- KEYED NOTE:**
- MOUNT RECEPTACLE 42" AFF TO BOTTOM OF DEVICE.
  - MOUNT RECEPTACLE 42" AFF TO BOTTOM OF DEVICE. RECEPTACLE TO BE FED ON THE LOAD SIDE OF GFCI RECEPTACLE.
  - FURNISH & INSTALL A NEMA 14-50R RECEPTACLE FOR ELECTRIC RANGE. WIRING TO BE 3#8 AWG & #10 GND.
  - PROVIDE POWER FOR RANGE HOOD.
  - PROVIDE POWER FOR FAN COIL UNIT. COORDINATE WITH MECHANICAL CONTRACTOR FOR EXACT LOCATION OF ELECTRICAL CONNECTION.
  - RECEPTACLE TO BE FED ON THE LOAD SIDE OF GFCI RECEPTACLE.

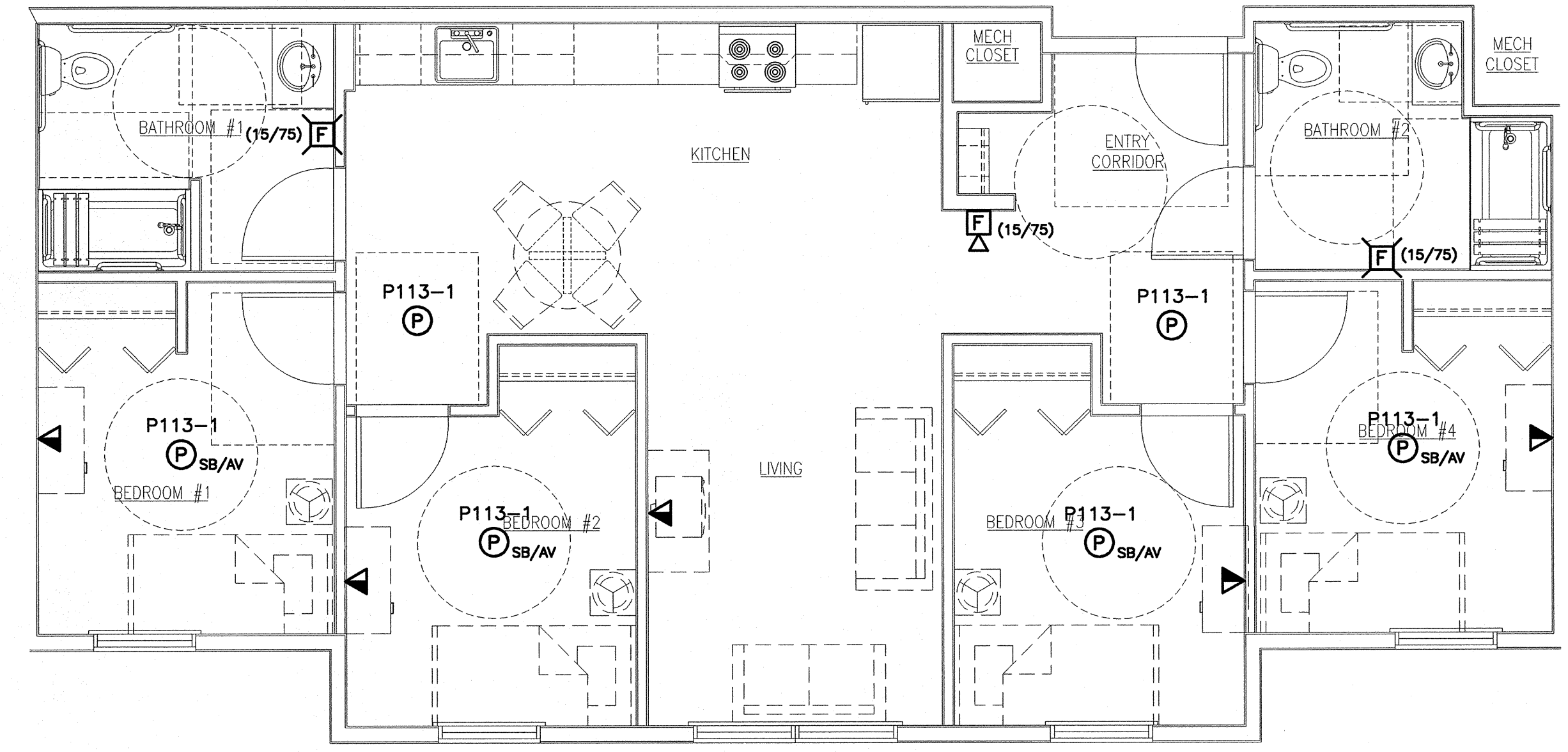
H1 TYPICAL UNIT #1 POWER PLAN

1/4"=1'-0"



A1 TYPICAL UNIT #1 LIGHTING PLAN

1/4"=1'-0"



A9 TYPICAL UNIT #1 SYSTEMS PLAN

1/4"=1'-0"

BAYSIDE VILLAGE  
 STUDENT HOUSING COMPLEX  
 PORTLAND, ME

ISSUED FOR CONSTRUCTION  
 9-14-07

REV	DESCRIPTION	DATE
0	ISSUED FOR CONSTRUCTION	9-14-07

GRAPHIC SCALE:  
 0" 1"

SCALE: 1/4"=1'-0"

PROJECT MANAGER: DJT  
 JC/DRAWN BY: CDS  
 A/E OF RECORD: DJT  
 CAD FILE: E-401-07125  
 PROJECT NO: 07125  
 DATE: 9-14-07

SHEET TITLE:  
 UNIT BASE 1  
 ELECTRICAL  
 ENLARGED PLANS

SHEET No.  
 E-401