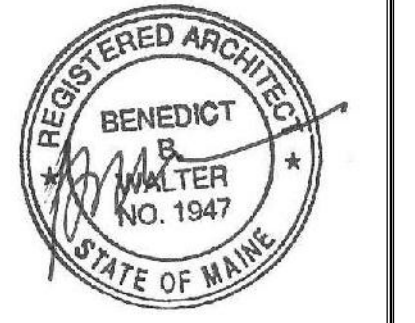




CWS Architects

Architecture
Space Planning
Value Design

434 Cumberland Avenue
Portland, ME 04101
Phone: (207) 774-4441
Fax: (207) 774-4016
www.CWSArch.com



Owner: **SOUTHERN MAINE STUDENT HOUSING LLC**
247 COMMERCIAL STREET
ROCKPORT, MAINE 04856
TEL: (207) 236-4067

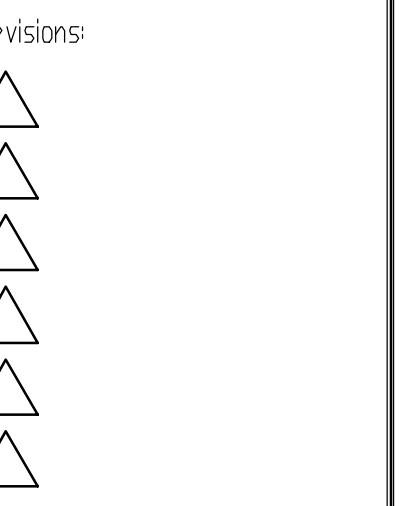
Contractor: **PIZZAGALLI CONSTRUCTION**
131 PRESUMPSCOT STREET
PORTLAND, ME, 04103
TEL: (207) 874-2323
FAX: (207) 874-2727

BAYSIDE VILLAGE - A STUDENT HOUSING COMPLEX
132 MARGINAL WAY
PORTLAND, MAINE

Project No: 2006-432/BVP

Drawing Title: **DOOR AND DOOR FRAME ELEVATIONS & MISC DETAILS**

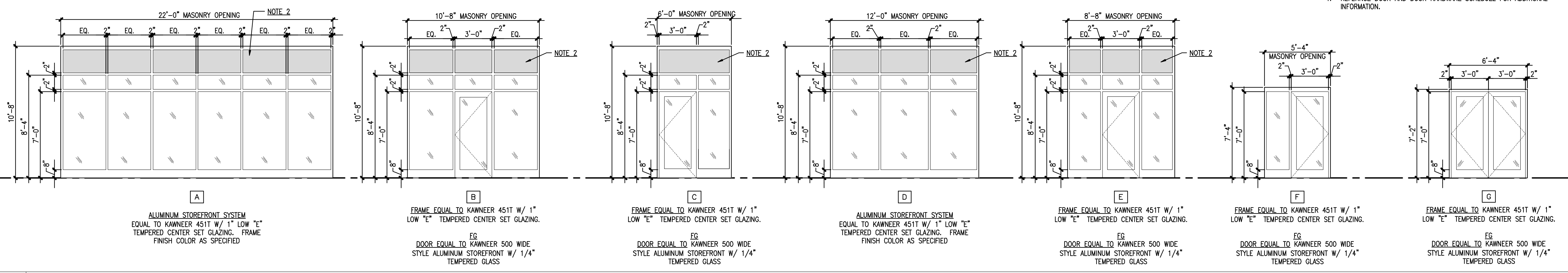
Scale: 1/4" = 1'-0"
Date: SEPTEMBER 14, 2007



Drawing Number:

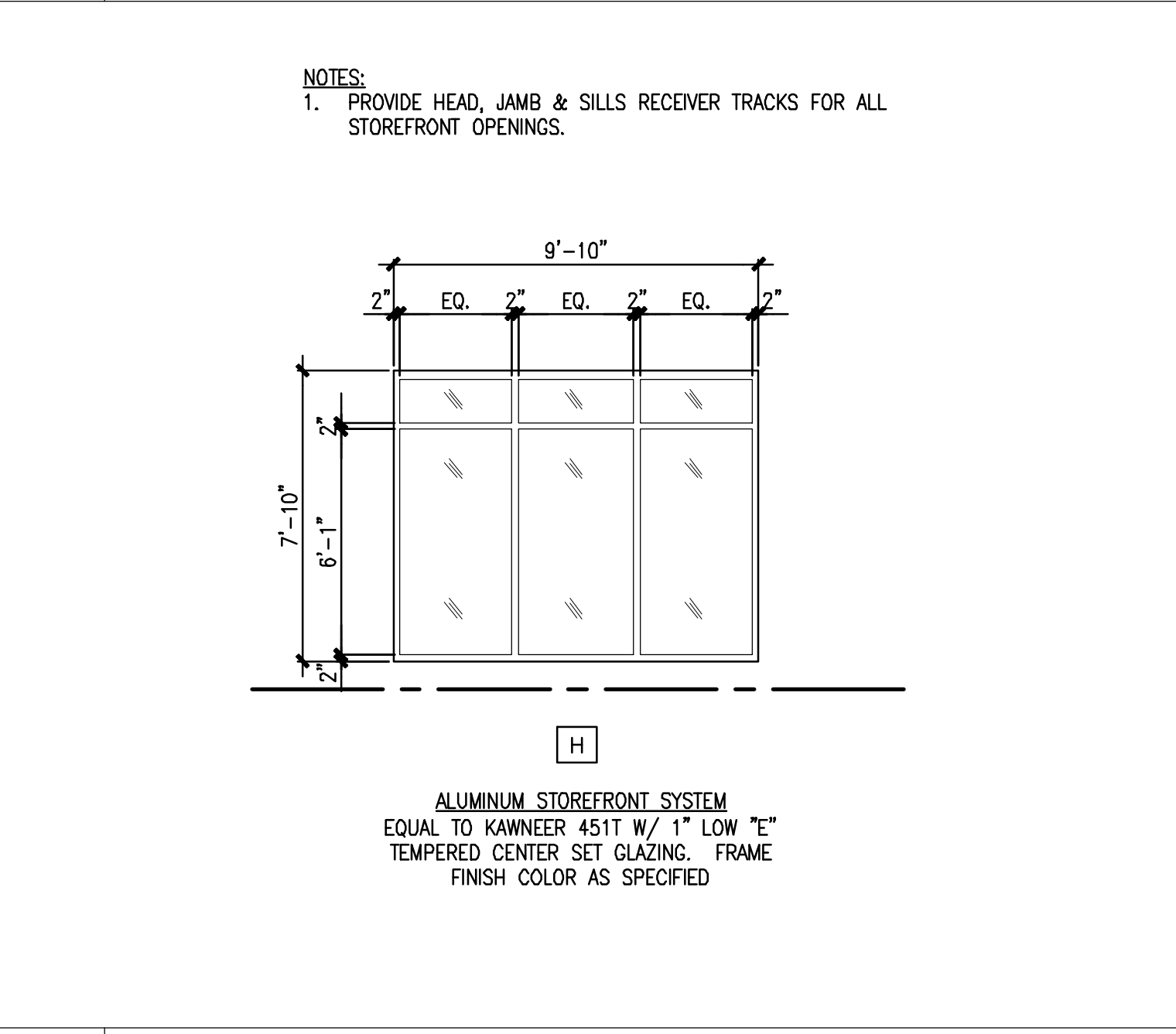
A8.11

ALUMINUM STOREFRONT NOTES:
1. PROVIDE HEAD, JAMB & SILLS RECEIVER TRACKS FOR ALL STOREFRONT OPENINGS.
2. MAPES INSULATED SPANDREL PANELS. FINISH COLOR AS SPECIFIED.
3. MODIFY MAPES PANEL AS REQUIRED SIGNAGE AS INDICATED ON BUILDING ELEVATIONS.
4. REFERENCE DOOR AND DOOR HARDWARE SCHEDULE FOR ADDITIONAL INFORMATION.



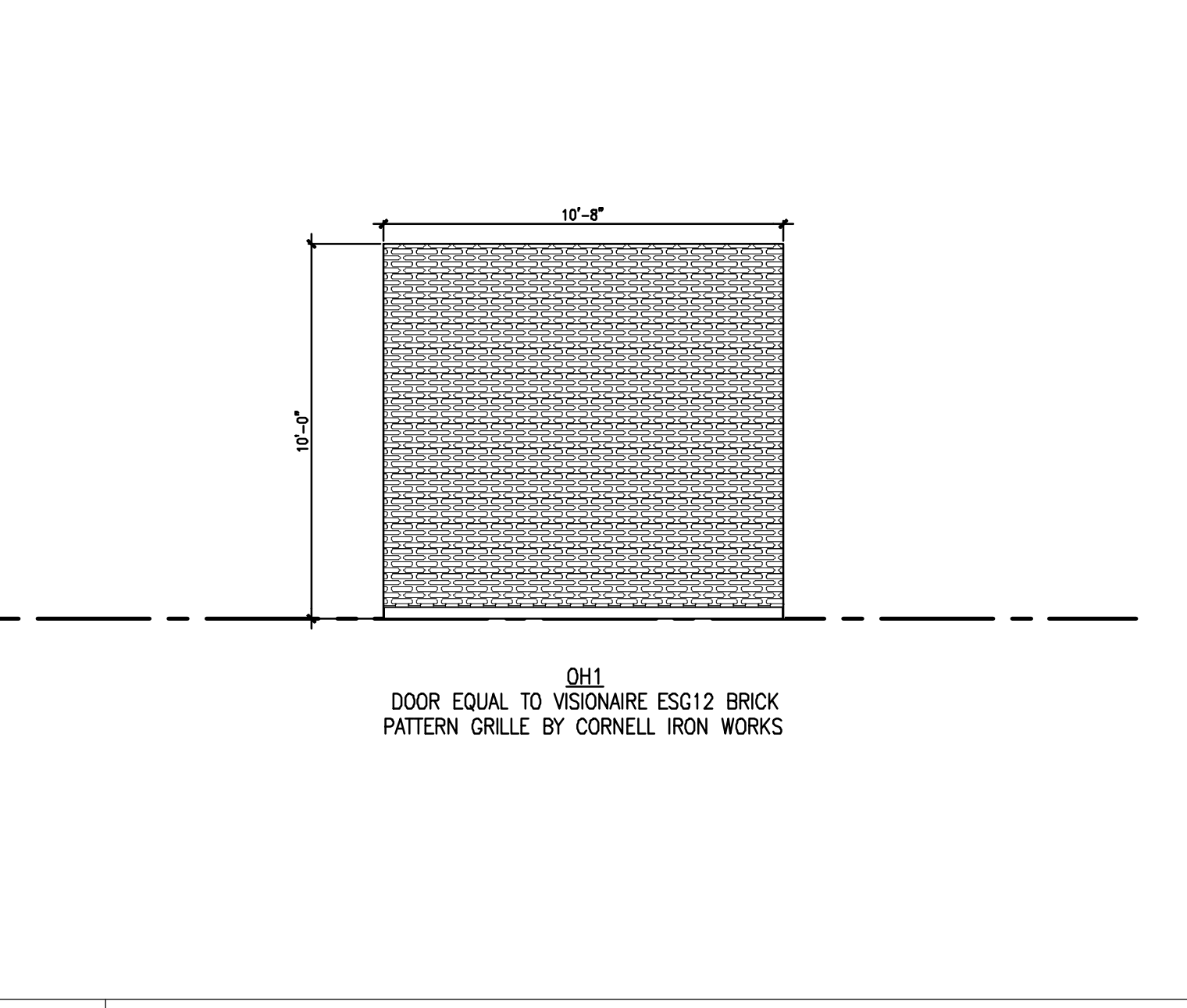
1 ALUMINUM STOREFRONT ELEVATIONS

REFERENCED FROM: SCALE: 1/4" = 1'-0"



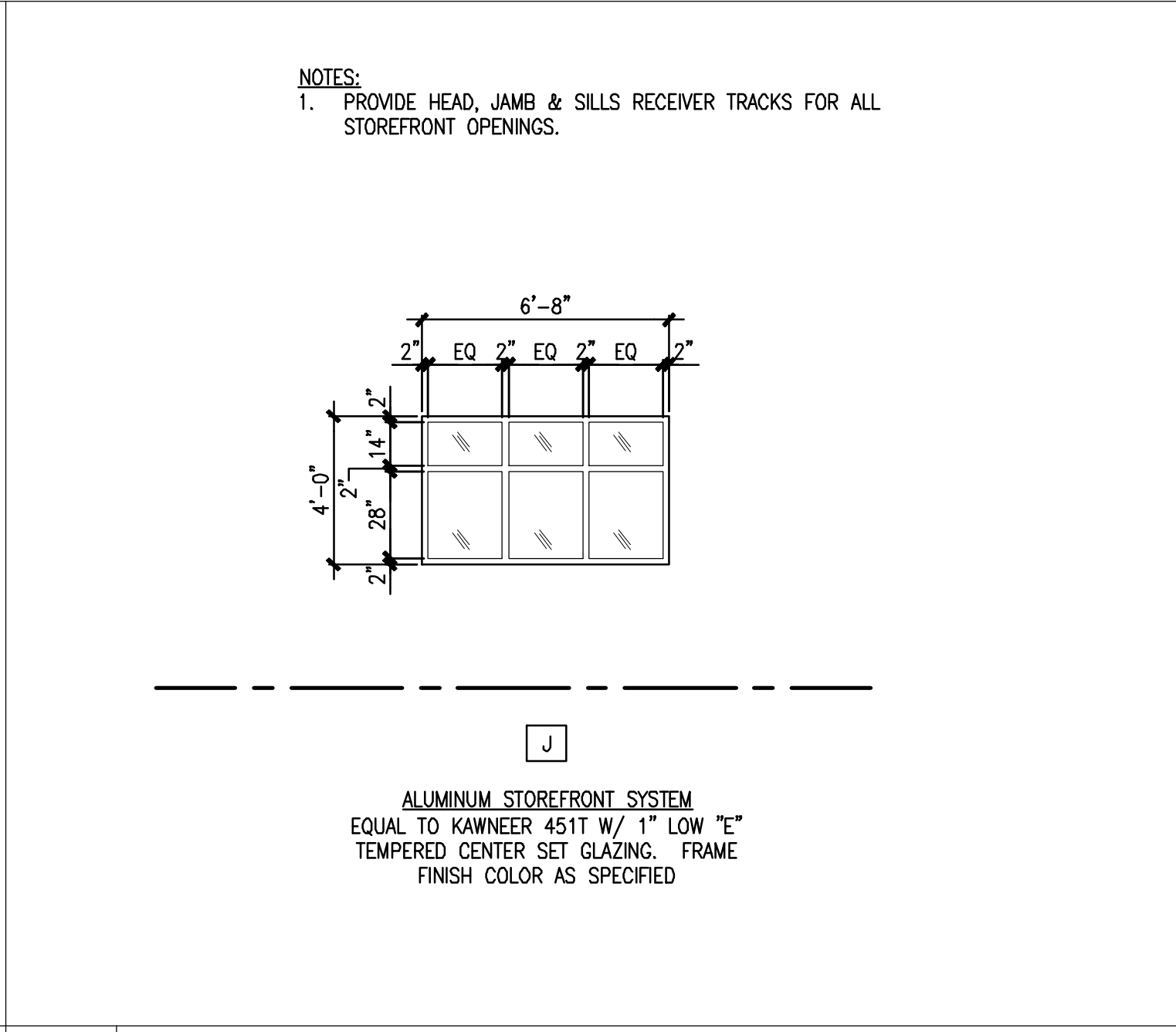
5 DISPLAY CASE ELEVATION

REFERENCED FROM: SCALE: 1/4" = 1'-0"



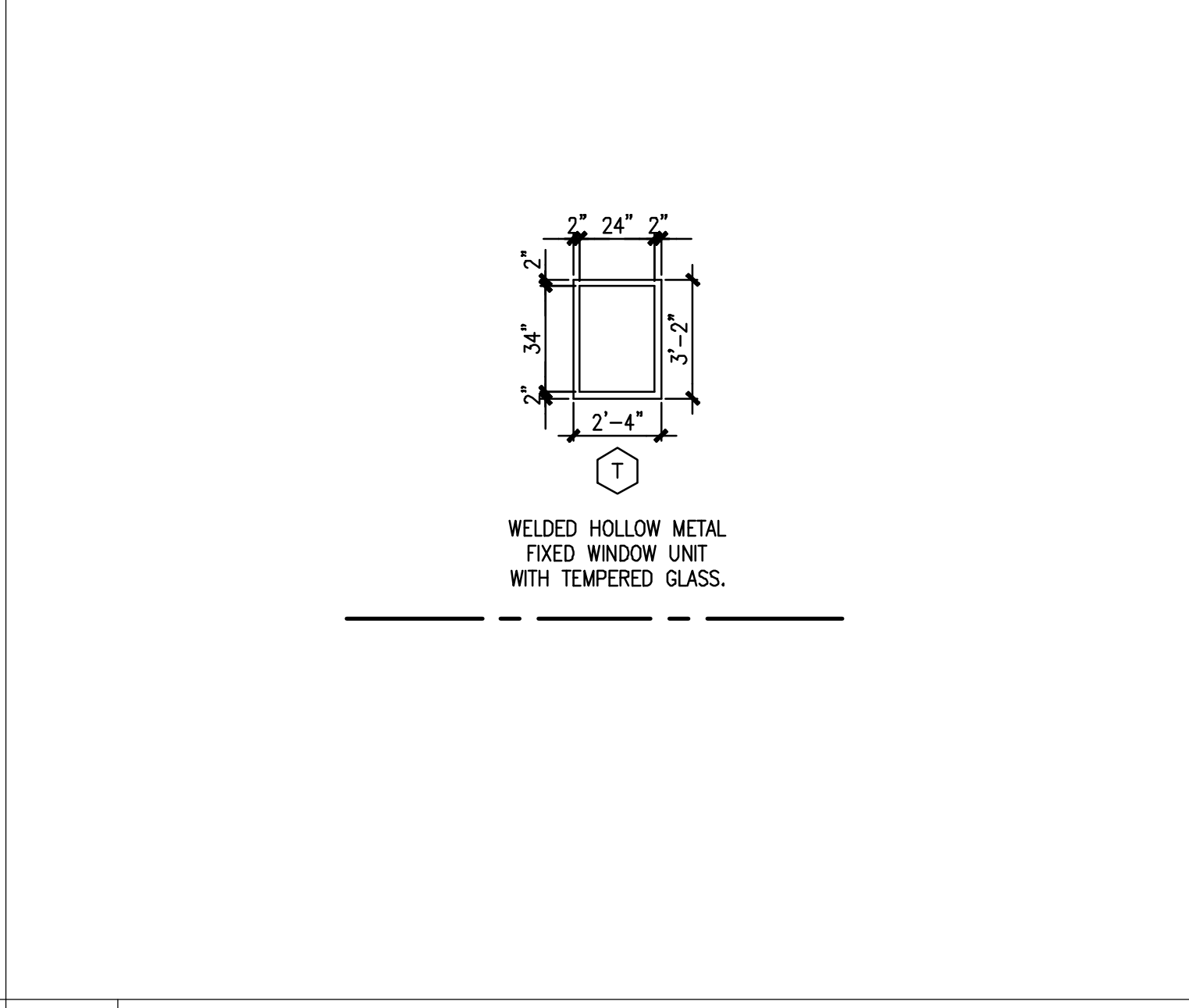
9 GARAGE DOOR ELEVATIONS

REFERENCED FROM: SCALE: 1/4" = 1'-0"



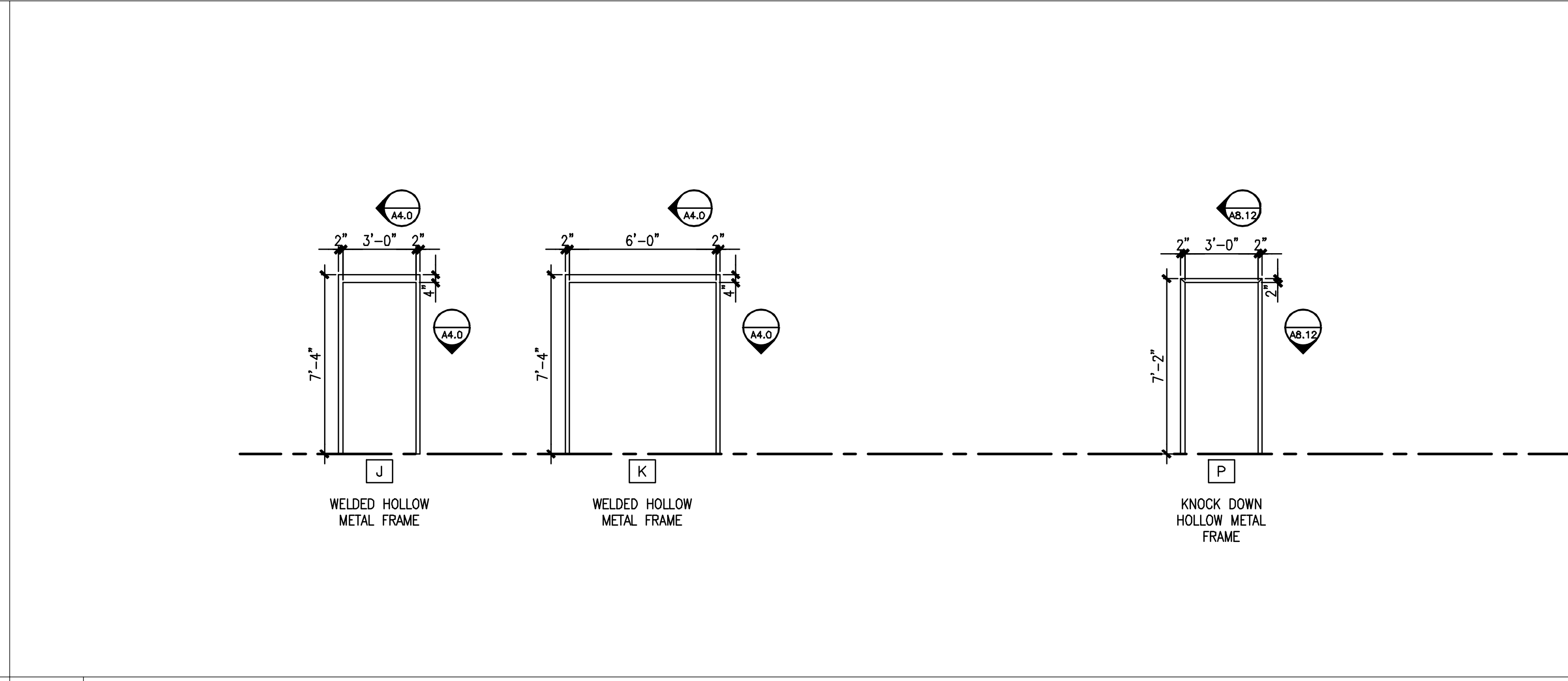
6 ALUMINUM STOREFRONT WINDOW ELEVATION

REFERENCED FROM: SCALE: 1/4" = 1'-0"



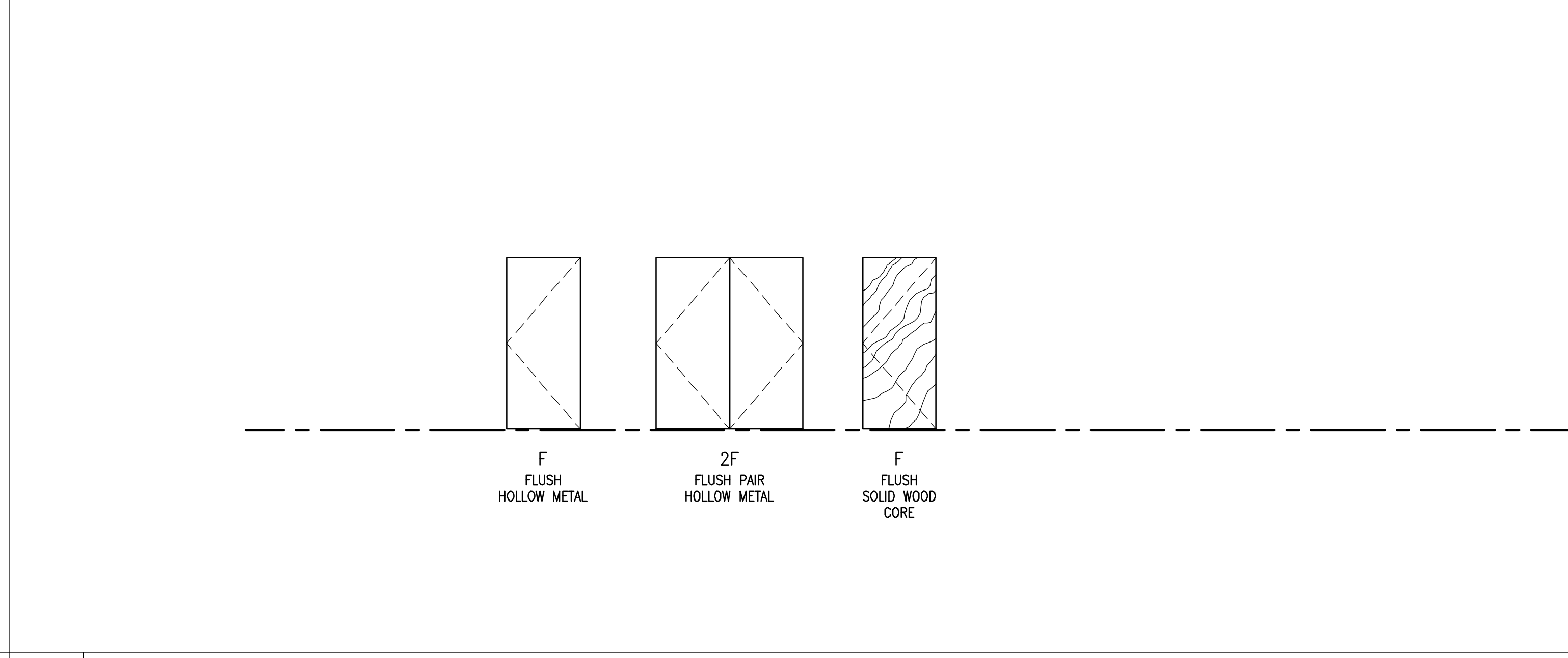
10 HOLLOW METAL WINDOW ELEVATION

REFERENCED FROM: SCALE: 1/4" = 1'-0"



7 DOOR FRAME ELEVATIONS

REFERENCED FROM: SCALE: 1/4" = 1'-0"



11 DOOR ELEVATIONS

REFERENCED FROM: SCALE: 1/4" = 1'-0"