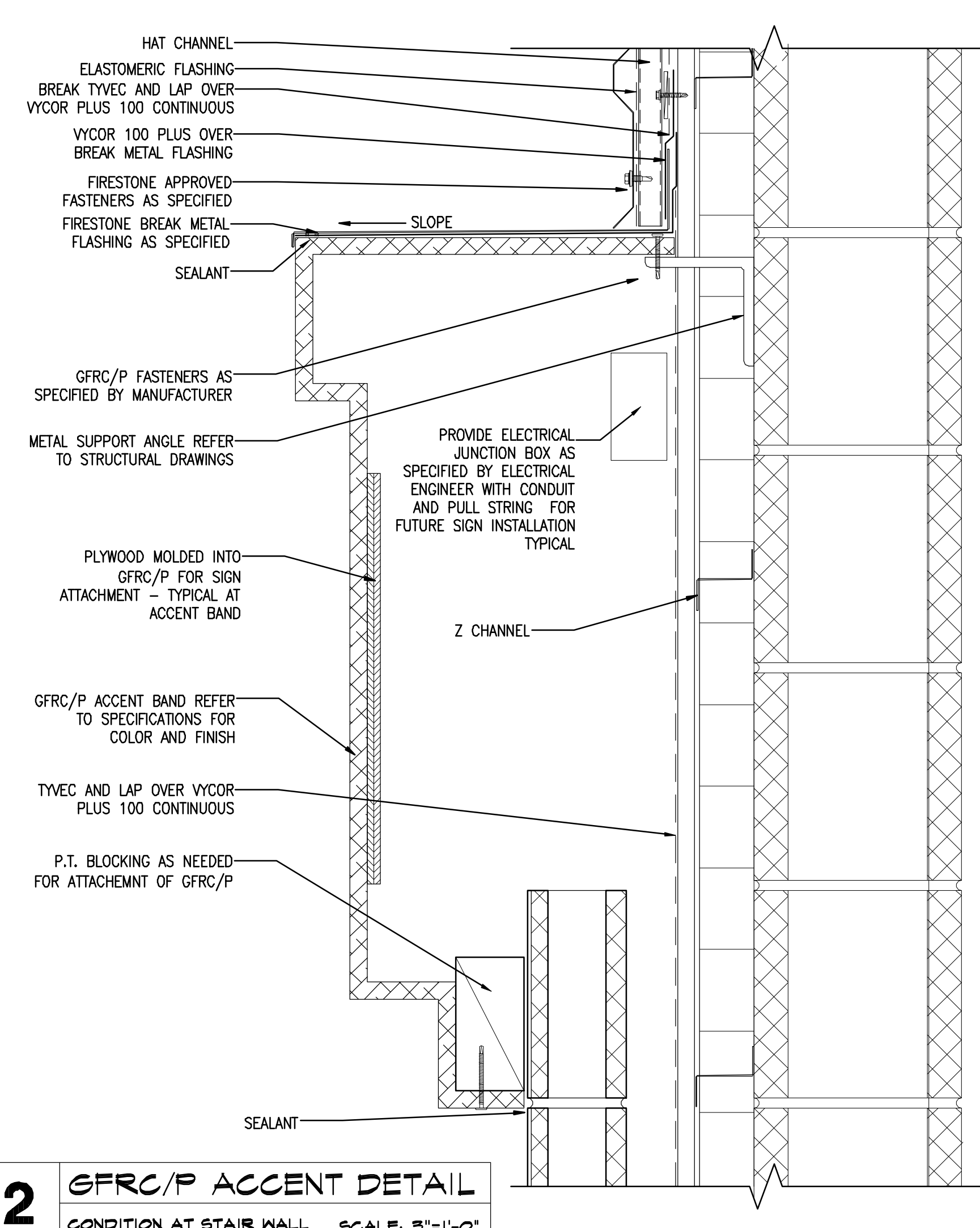
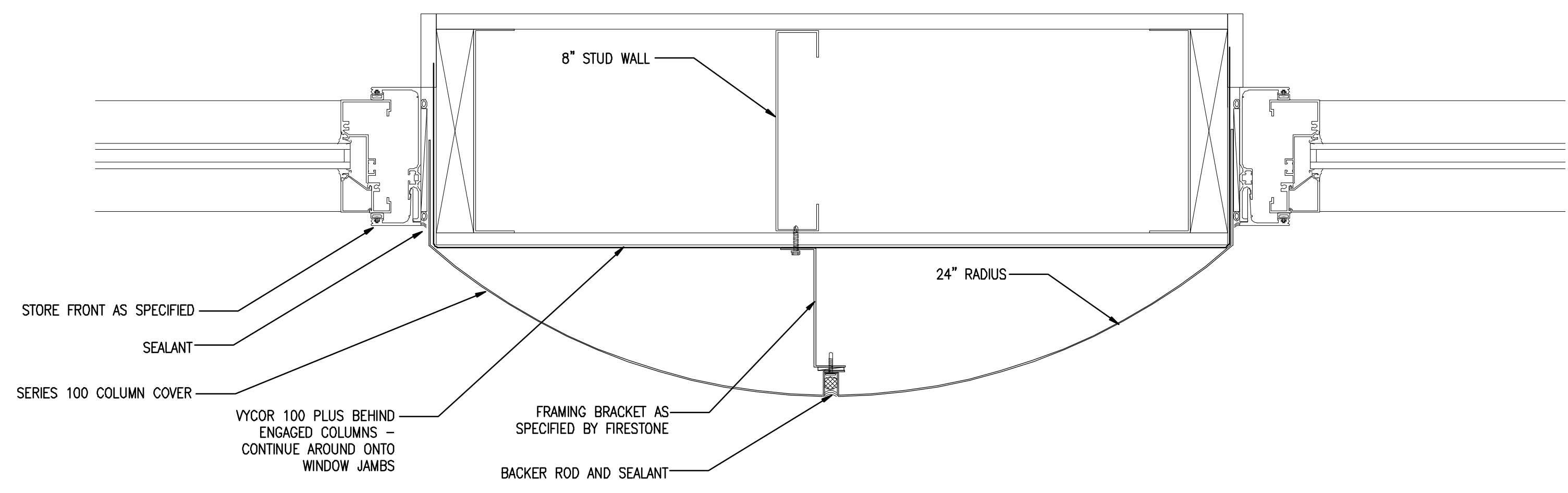


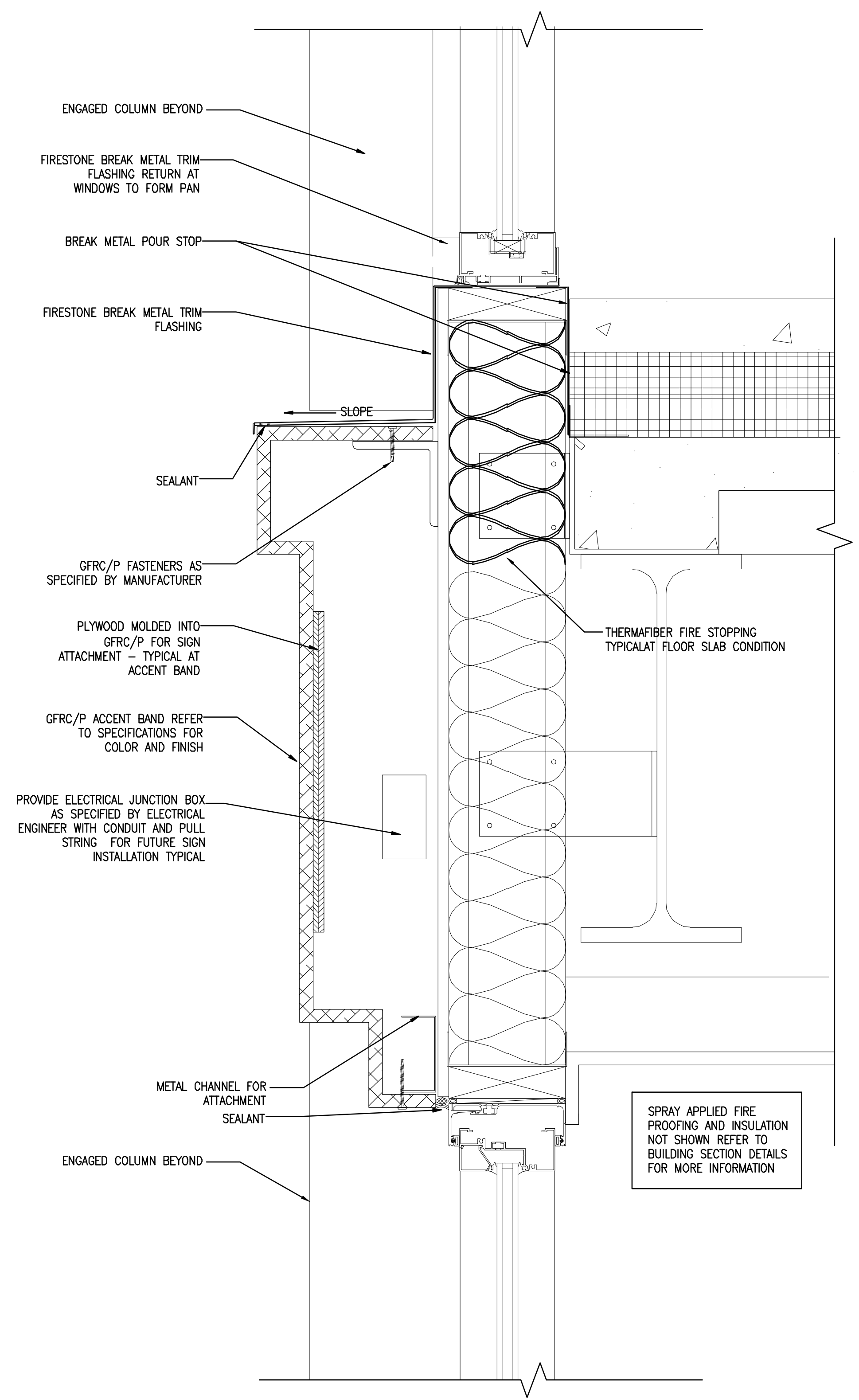
1 GFRC/P ACCENT DETAIL
CONDITION AT SUN CONTROL DEVICES SCALE: 3"=1'-0"



2 GFRC/P ACCENT DETAIL
CONDITION AT STAIR WALL SCALE: 3"=1'-0"



3 ENGAGED COLUMN BETWEEN WINDOWS AT MAIN ENTRY
SCALE: 3"=1'-0"



4 GFRC/P ACCENT BAND DETAIL
CONDITION INDICATES MASONRY ABOVE AND METAL CLADDING BELOW. SCALE: 3"=1'-0"

CWS
CWS Architects
Architecture
Space Planning
Value Design
434 Cumberland Avenue
Portland, ME 04101
Phone: (207) 774-4441
Fax: (207) 774-4016
www.CWSarch.com

REGISTERED ARCHITECT
BENEDICT
&
WALTER
No. 1947
STATE OF MAINE

Owner: **SOUTHERN MAINE STUDENT HOUSING LLC**
247 COMMERCIAL STREET
ROCKPORT, MAINE 04856
TEL: (207) 236-4067

Contractor: **PIZZAGALLI CONSTRUCTION**
131 PRESUMPSCOT STREET
PORTLAND, ME 04103
TEL: (207) 874-2323
FAX: (207) 874-2727

BAYSIDE VILLAGE - A STUDENT HOUSING COMPLEX
132 MARGINAL WAY
PORTLAND, MAINE

Project No: 2006-432-BVP

Drawing Title: **EXTERIOR DETAILS**

Scale: AS NOTED
Date: SEPTEMBER 14, 2007
Revisions:

Drawing Number: **A7.48**

ISSUED FOR CONSTRUCTION