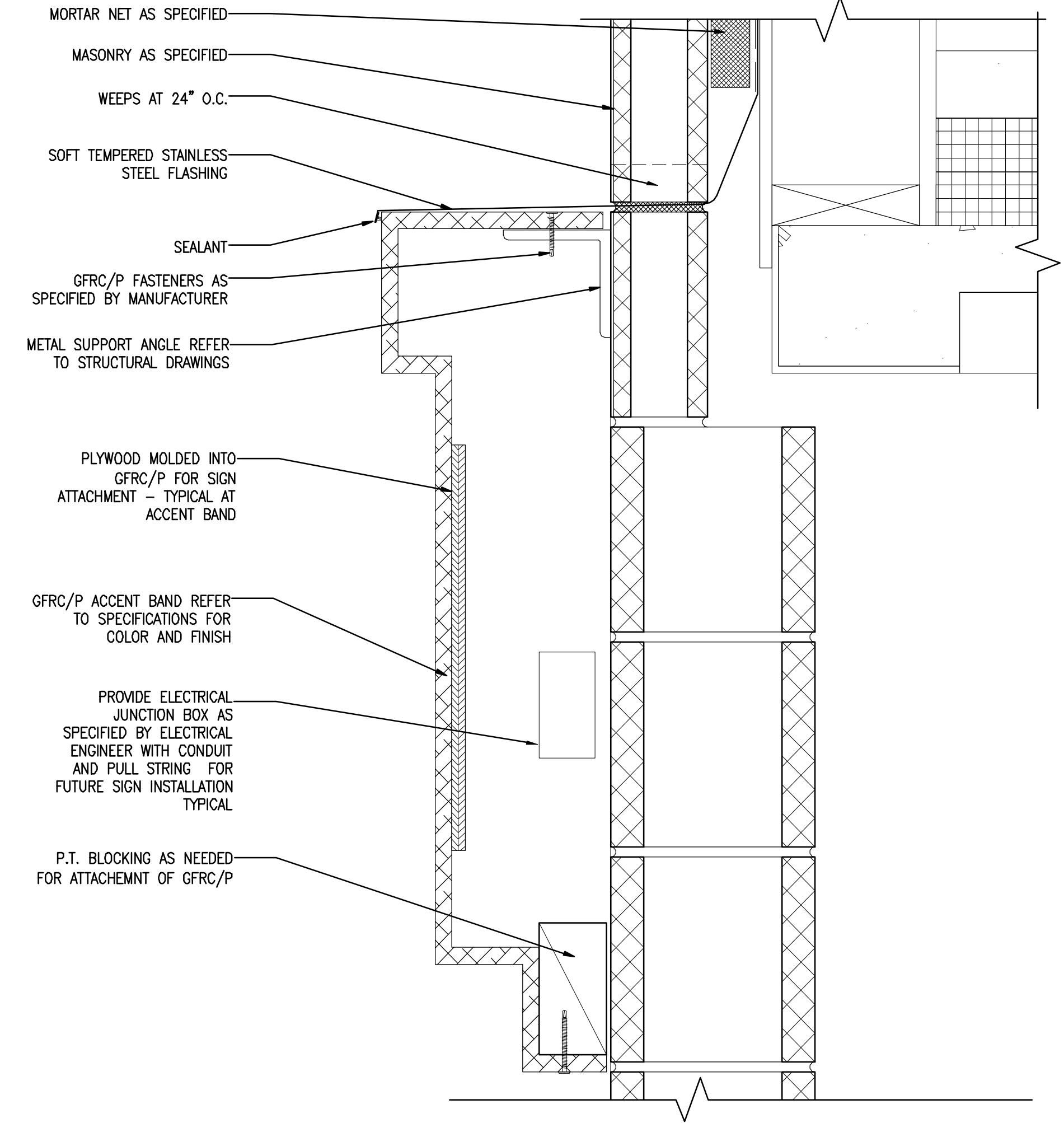
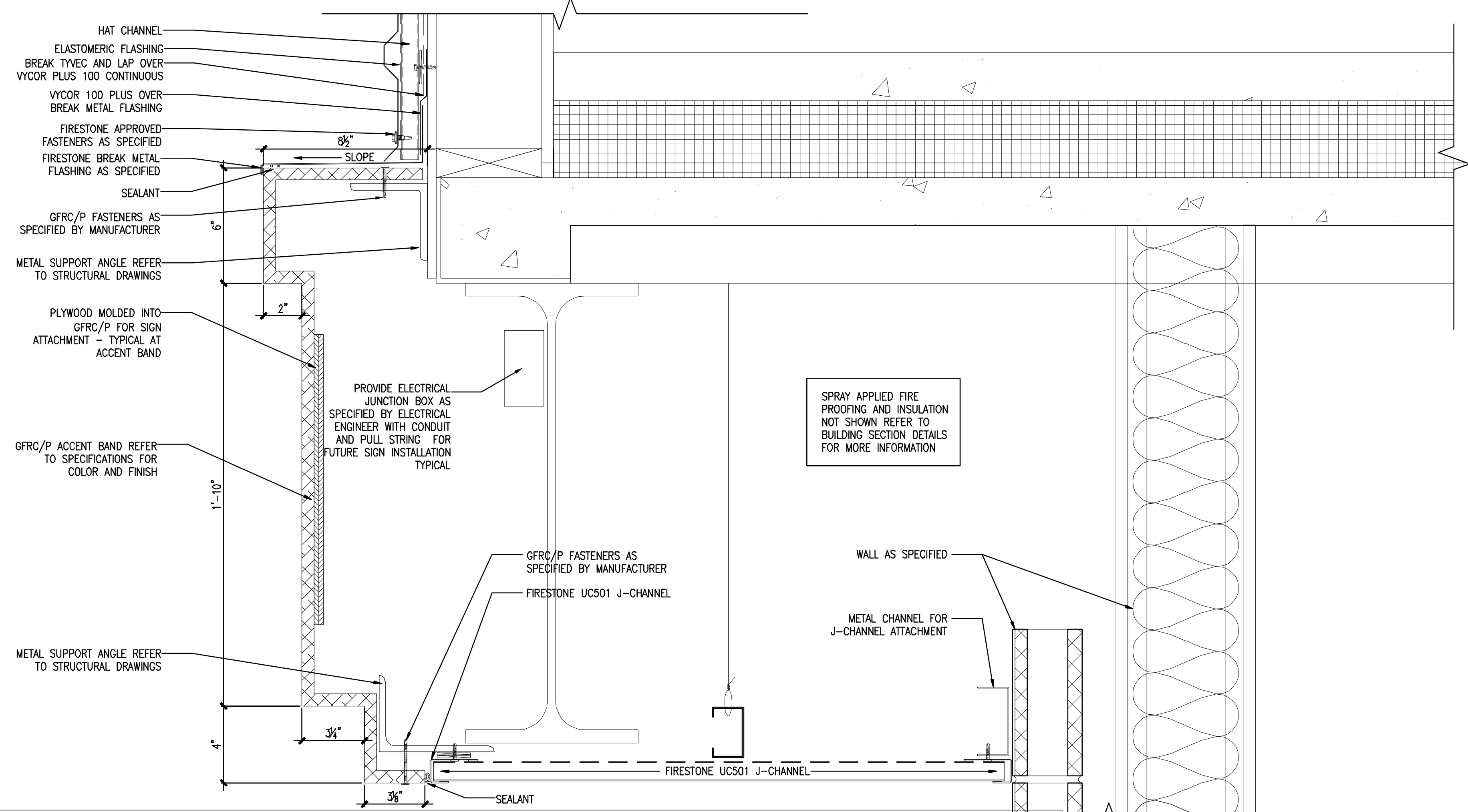


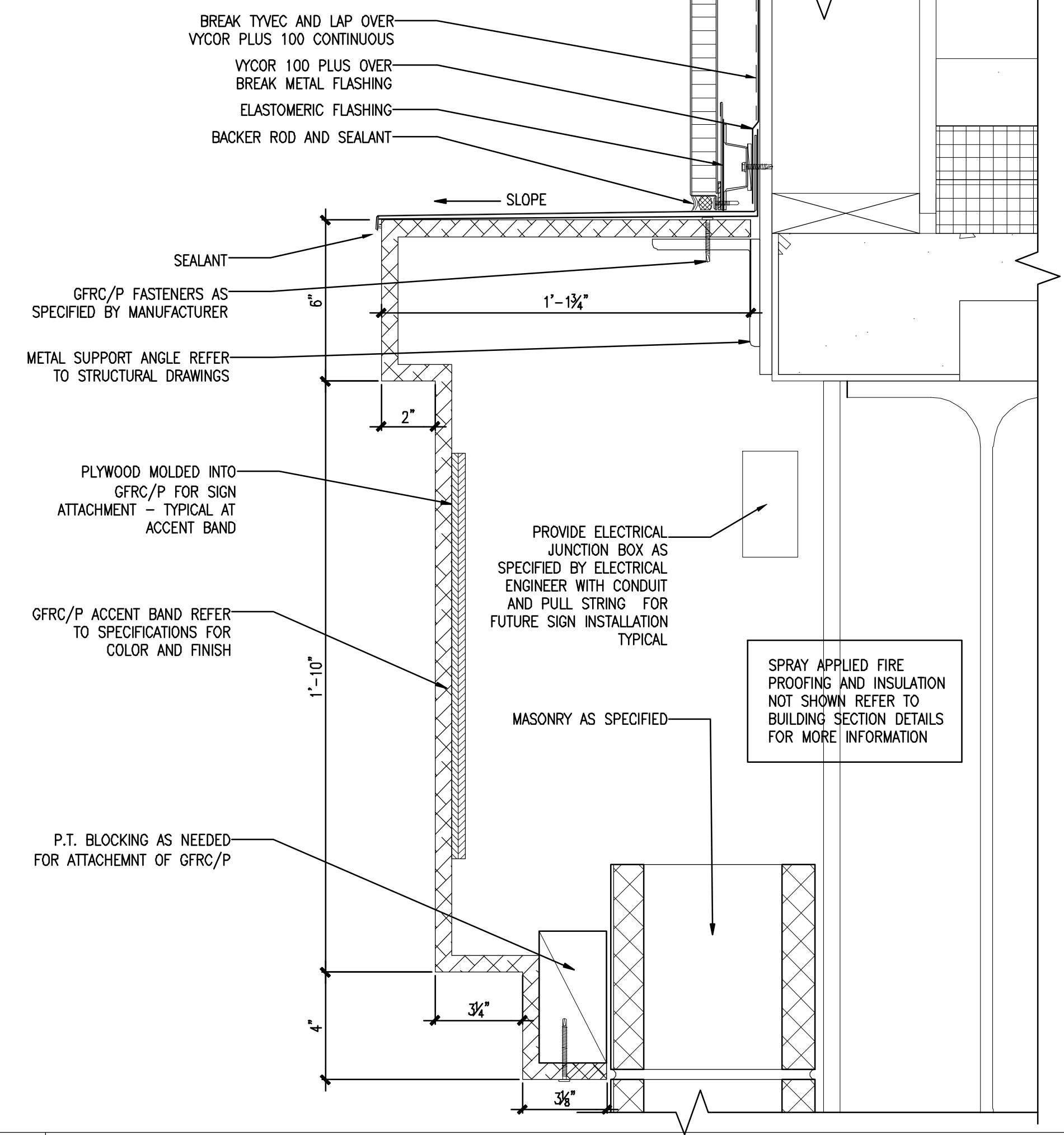
1 GFRC/P ACCENT BAND AND SOFFIT DETAIL
 CONDITION INDICATES MASONRY ABOVE AND STORE FRONT OR MASONRY BELOW. SCALE: 3/8"=1'-0"



2 GFRC/P ACCENT BAND DETAIL
 CONDITION INDICATES MASONRY ABOVE AND BELOW. SCALE: 3/8"=1'-0"

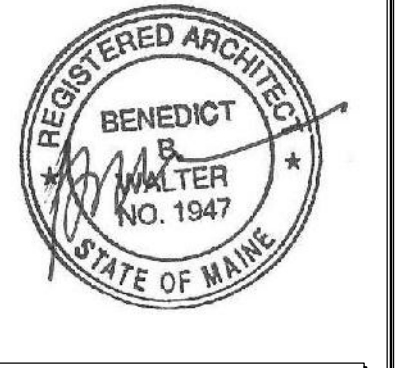


3 GFRC/P ACCENT BAND AND SOFFIT DETAIL
 CONDITION INDICATES METAL CLADDING ABOVE AND STORE FRONT OR MASONRY BELOW. SCALE: 3/8"=1'-0"



4 GFRC/P ACCENT BAND DETAIL
 CONDITION INDICATES MASONRY ABOVE AND METAL CLADDING BELOW. SCALE: 3/8"=1'-0"

CWS
CWS Architects
 Architecture
 Space Planning
 Value Design
 434 Cumberland Avenue
 Portland, ME 04101
 Phone: (207) 774-4441
 Fax: (207) 774-4016
 www.CWSarch.com



Owner: **SOUTHERN MAINE STUDENT HOUSING LLC**
 247 COMMERCIAL STREET
 ROCKPORT, MAINE 04856
 TEL: (207) 236-4067
 Contractor: **PIZZAGALLI CONSTRUCTION**
 131 PRESUMPSCOT STREET
 PORTLAND, ME 04103
 TEL: (207) 874-2323
 FAX: (207) 874-2727

BAYSIDE VILLAGE - A STUDENT HOUSING COMPLEX
 132 MARGINAL WAY
 PORTLAND, MAINE

Project No: 2006-432/BVP
 Drawing Title: **EXTERIOR DETAILS**

Scale: AS NOTED
 Date: SEPTEMBER 14, 2007
 Revisions:

- △
- △
- △
- △
- △
- △

Drawing Number: **A7.47**