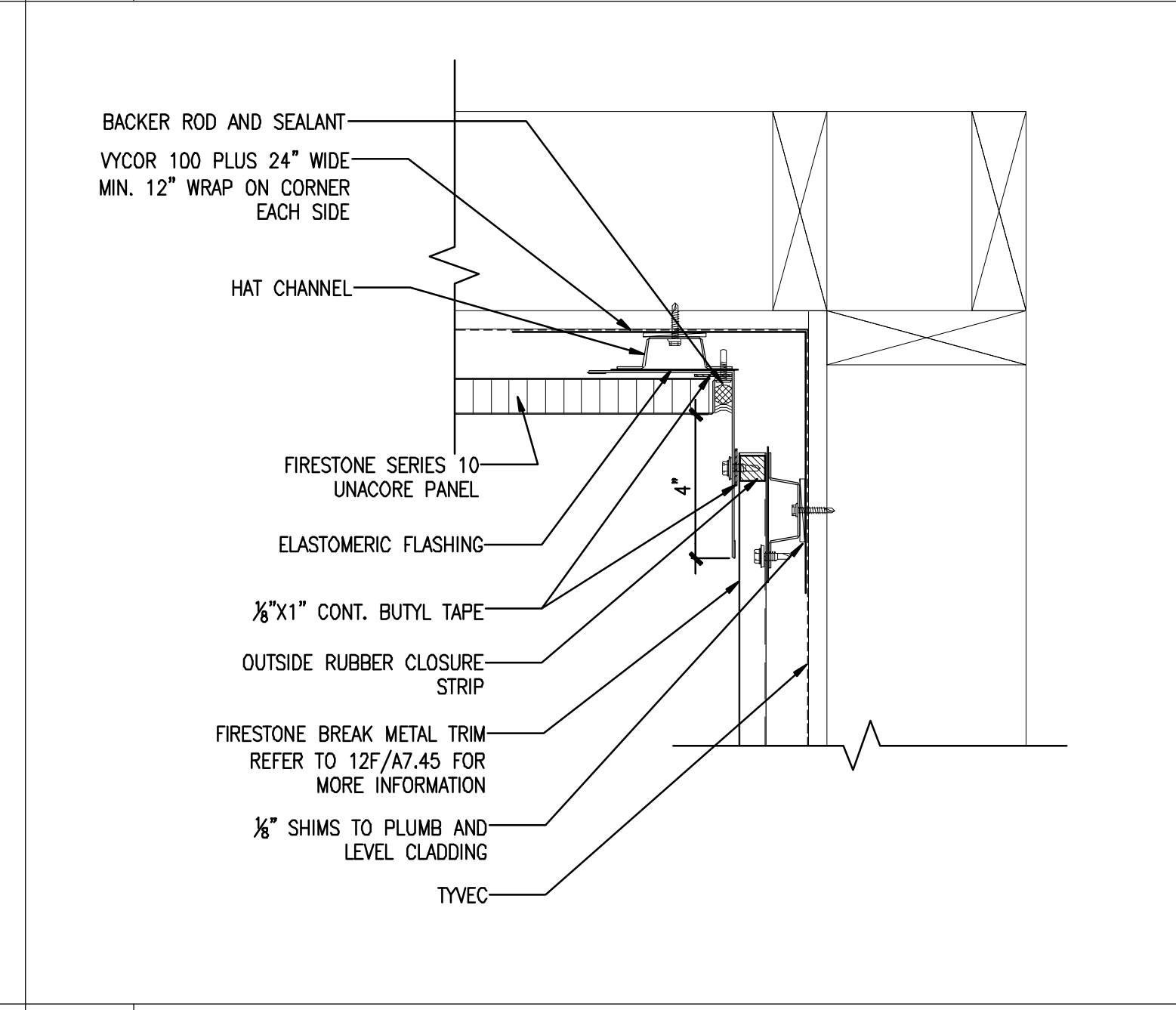
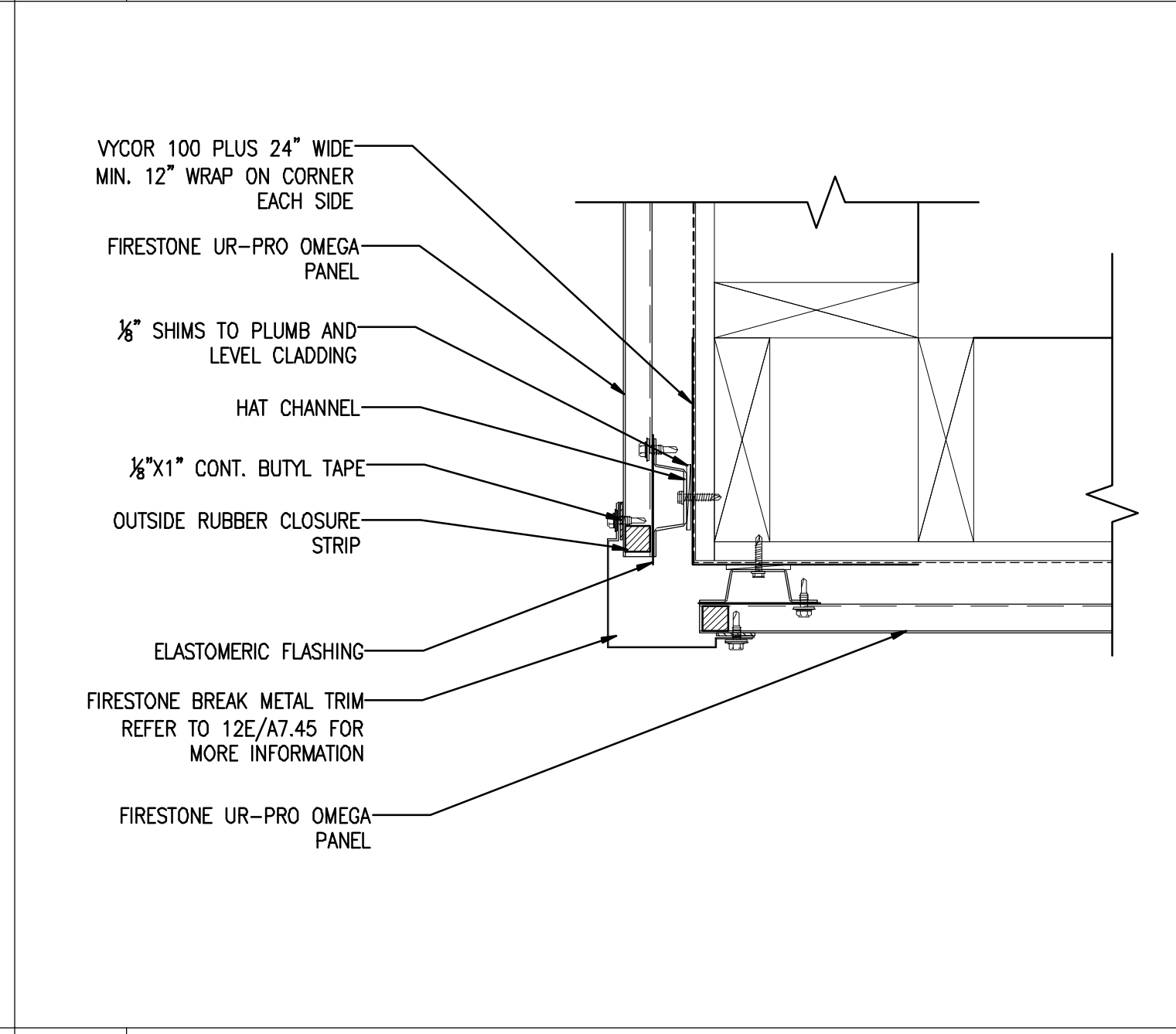
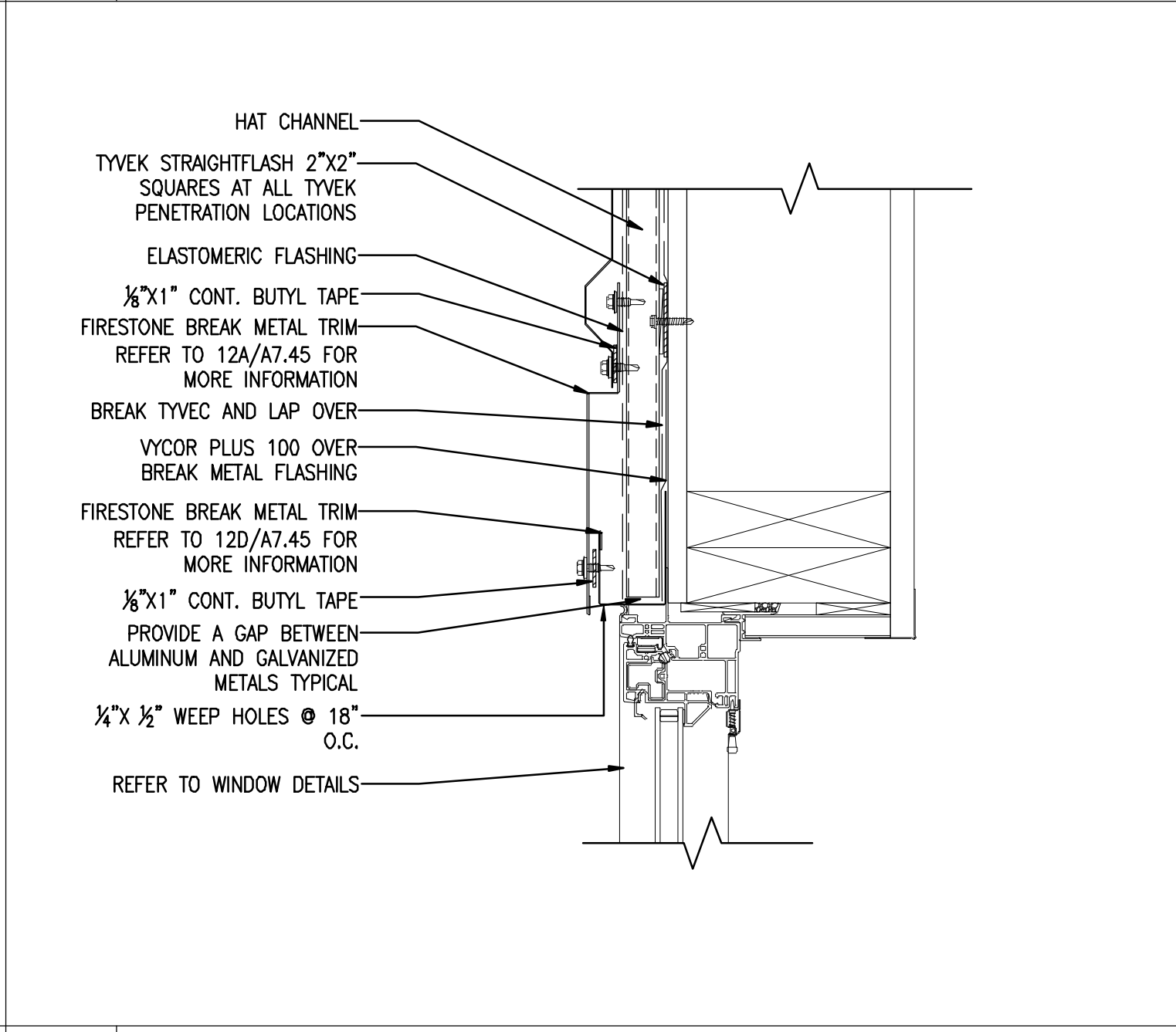
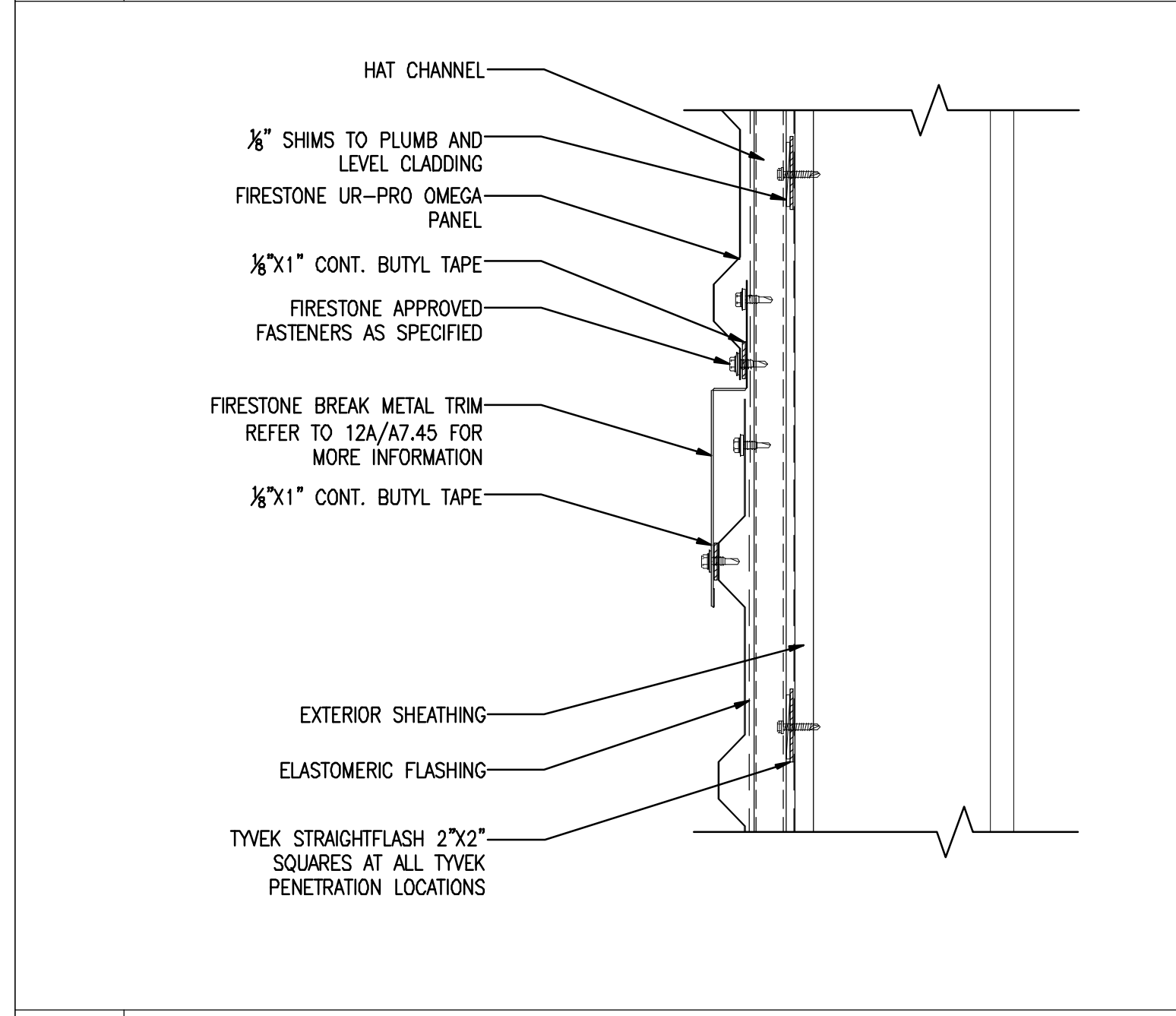


1 ROOF EDGE DETAIL
SERIES 10 PANEL
SCALE: 3"=1'-0"

2 ROOF EDGE DETAIL
UR-PRO OMEGA PANEL
SCALE: 3"=1'-0"

3 ROOF EDGE DETAIL
UC-501 PANEL
SCALE: 3"=1'-0"

4 ROOF EDGE DETAIL @ GFRCP
PANEL BELOW AS SHOWN IN ELEVATIONS
SCALE: 3"=1'-0"

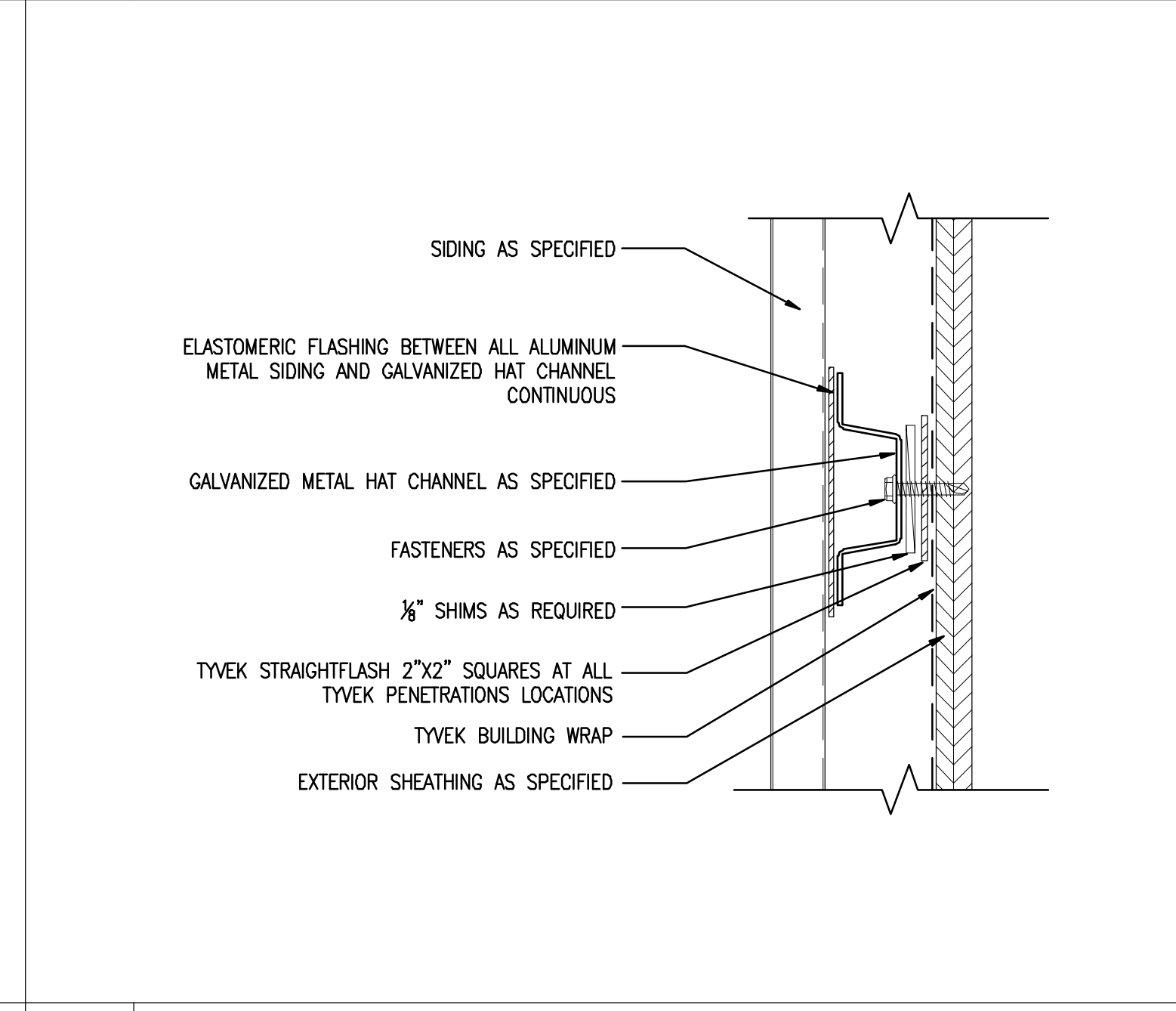
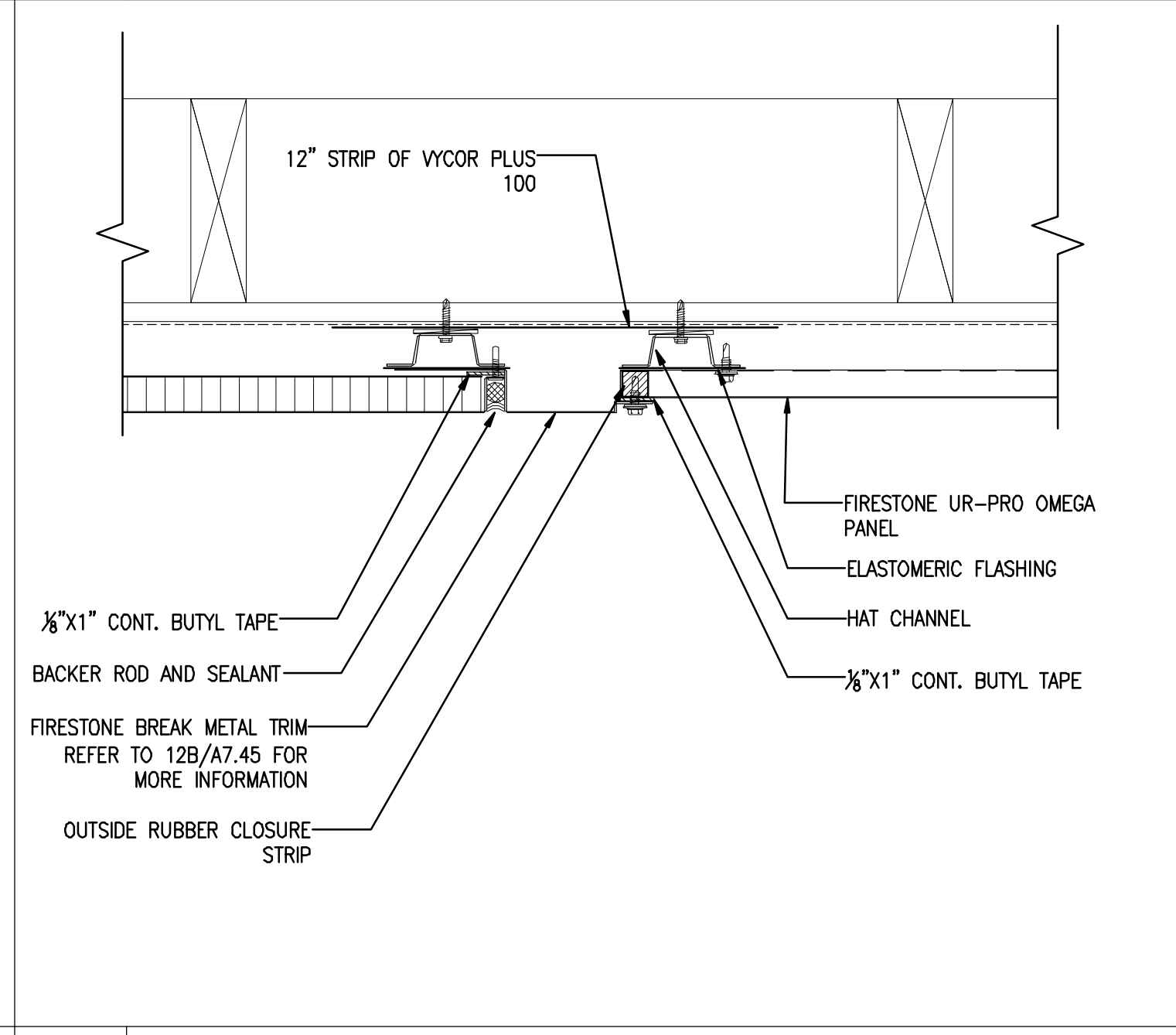
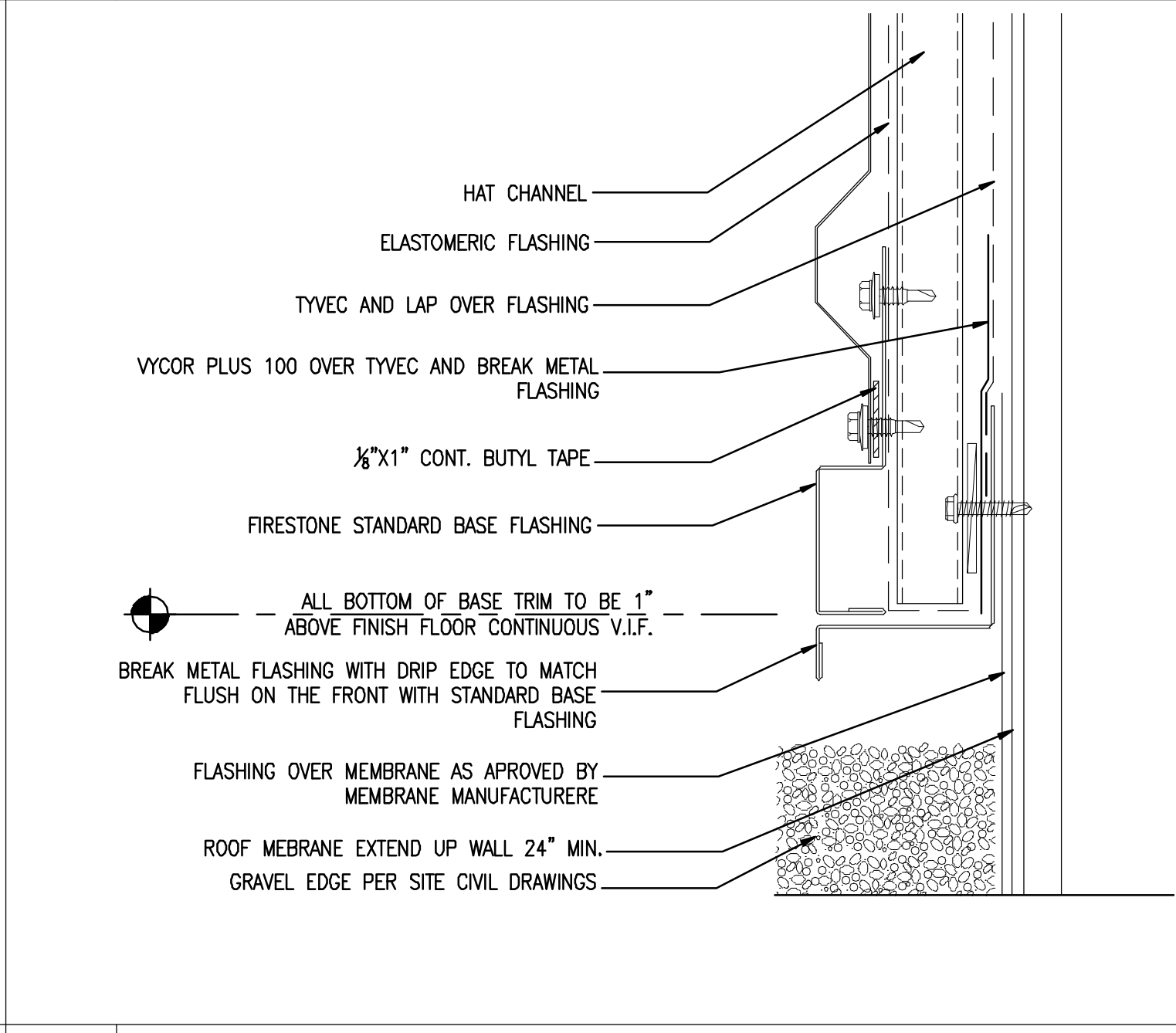
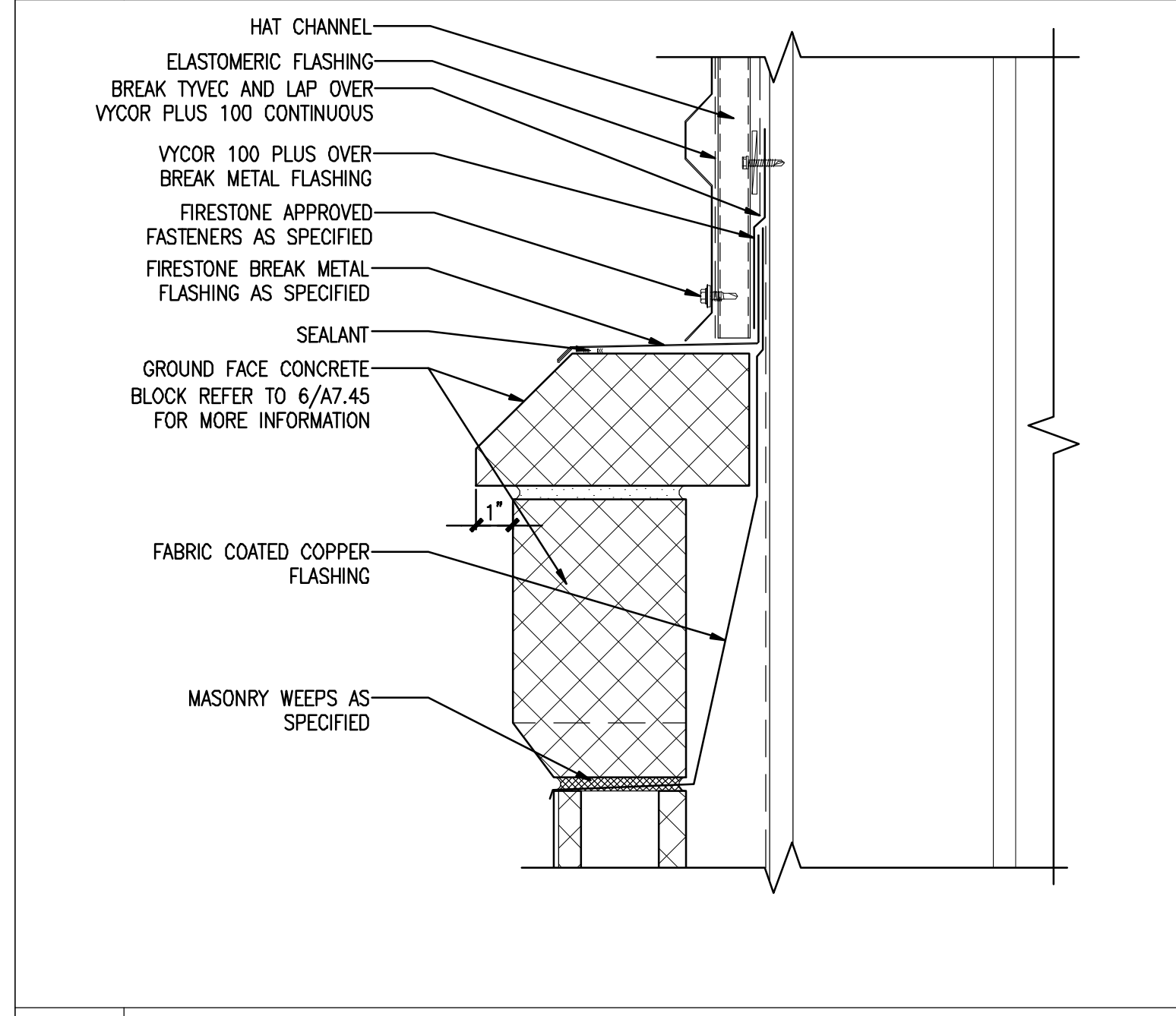


5 INTERMEDIATE TRIM INTERSECTION
REFERENCED FROM:
SCALE: 3"=1'-0"

6 INTERMEDIATE TRIM AT WINDOW HEAD
REFERENCED FROM:
SCALE: 3"=1'-0"

7 OUTSIDE CORNER DETAIL
UR-PRO OMEGA PANEL
SCALE: 3"=1'-0"

8 INSIDE CORNER DETAIL
UR-PRO OMEGA PANEL AND SERIES 10 PANEL
SCALE:



9 METAL CLADDING AT MASONRY DETAIL
UR-PRO OMEGA AT TOP OF MASONRY WALL
SCALE: 3"=1'-0"

10 BASE OF WALL @ COURTYARD
REFERENCED FROM:
SCALE: 6"=1'-0"

11 MATERIAL CHANGE @ FLUSH WALL CONDITION
SERIES 10 PANEL AND UR-PRO OMEGA PANEL
SCALE: 3"=1'-0"

12 METAL CLADDING STANDARD ASSEMBLY
REFERENCED FROM:
SCALE: 6"=1'-0"

CWS Architects
Architecture
Space Planning
Value Design

434 Cumberland Avenue
Portland, ME 04101
Phone: (207) 774-4441
Fax: (207) 774-4016
www.CWSArch.com

BENEDICT & WALTER
REGISTERED ARCHITECT
NO. 1947
STATE OF MAINE

Owner: **SOUTHERN MAINE STUDENT HOUSING LLC**
247 COMMERCIAL STREET
ROCKPORT, MAINE 04856
TEL: (207) 236-4067

Contractor: **PIZZAGALLI CONSTRUCTION**
131 PRESUMPSCOT STREET
PORTLAND, ME 04103
TEL: (207) 874-2323
FAX: (207) 874-2727

BAYSIDE VILLAGE - A STUDENT HOUSING COMPLEX
132 MARGINAL WAY
PORTLAND, MAINE

Project No: 2006-432/BVP

Drawing Title: **EXTERIOR DETAILS**

Scale: AS NOTED
Date: SEPTEMBER 14, 2007

Revisions:

Drawing Number: **A7.44**

ISSUED FOR CONSTRUCTION