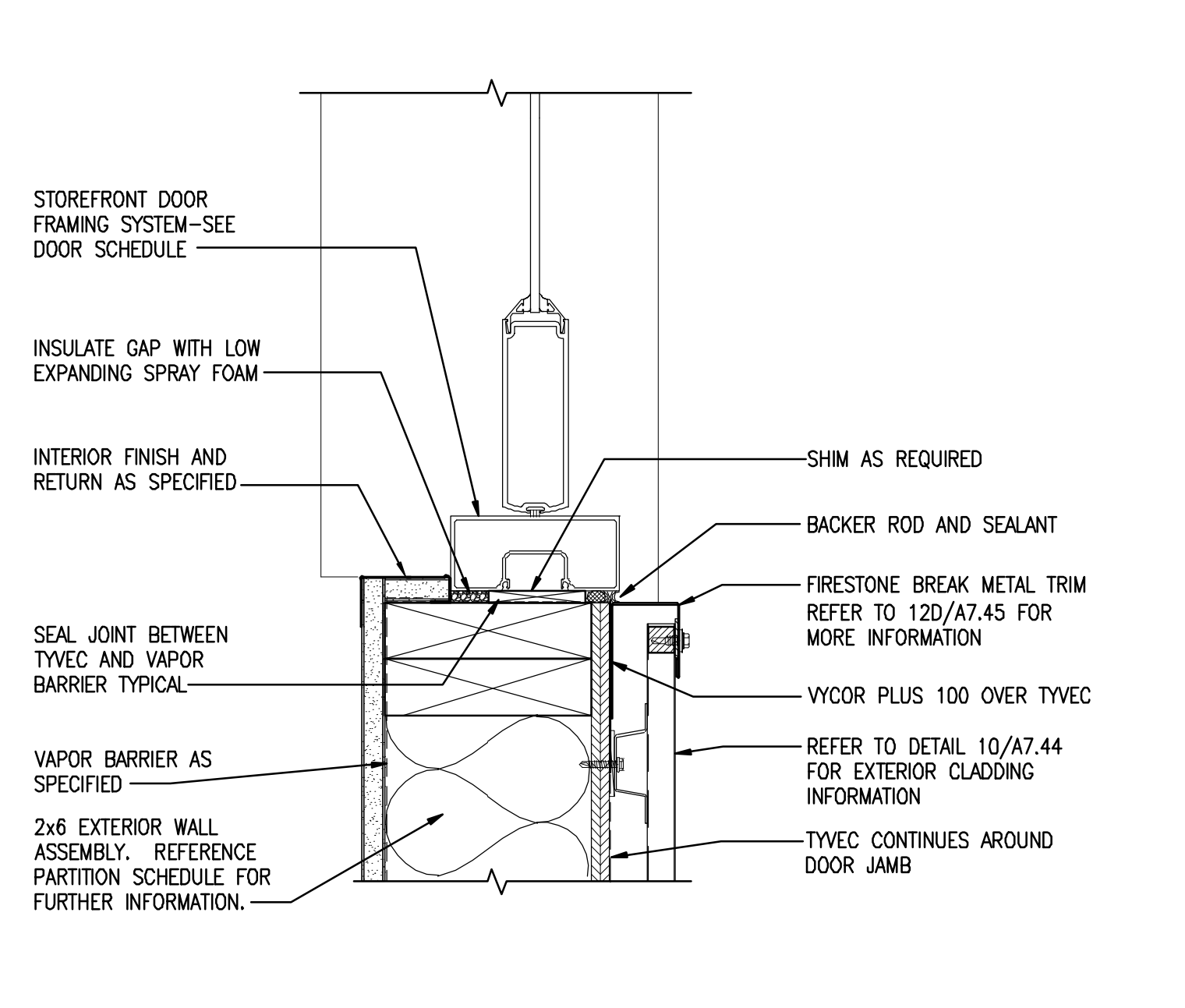
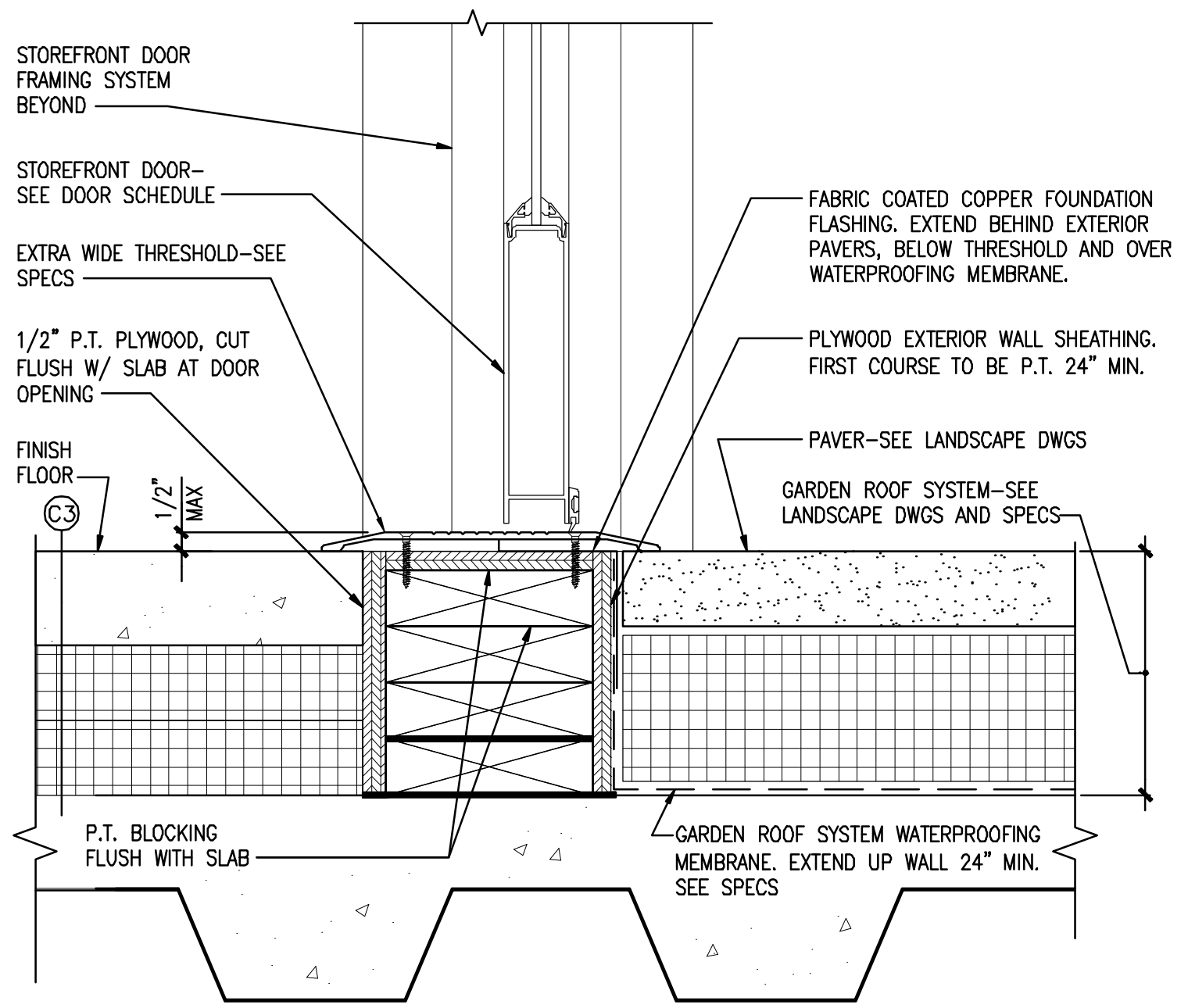


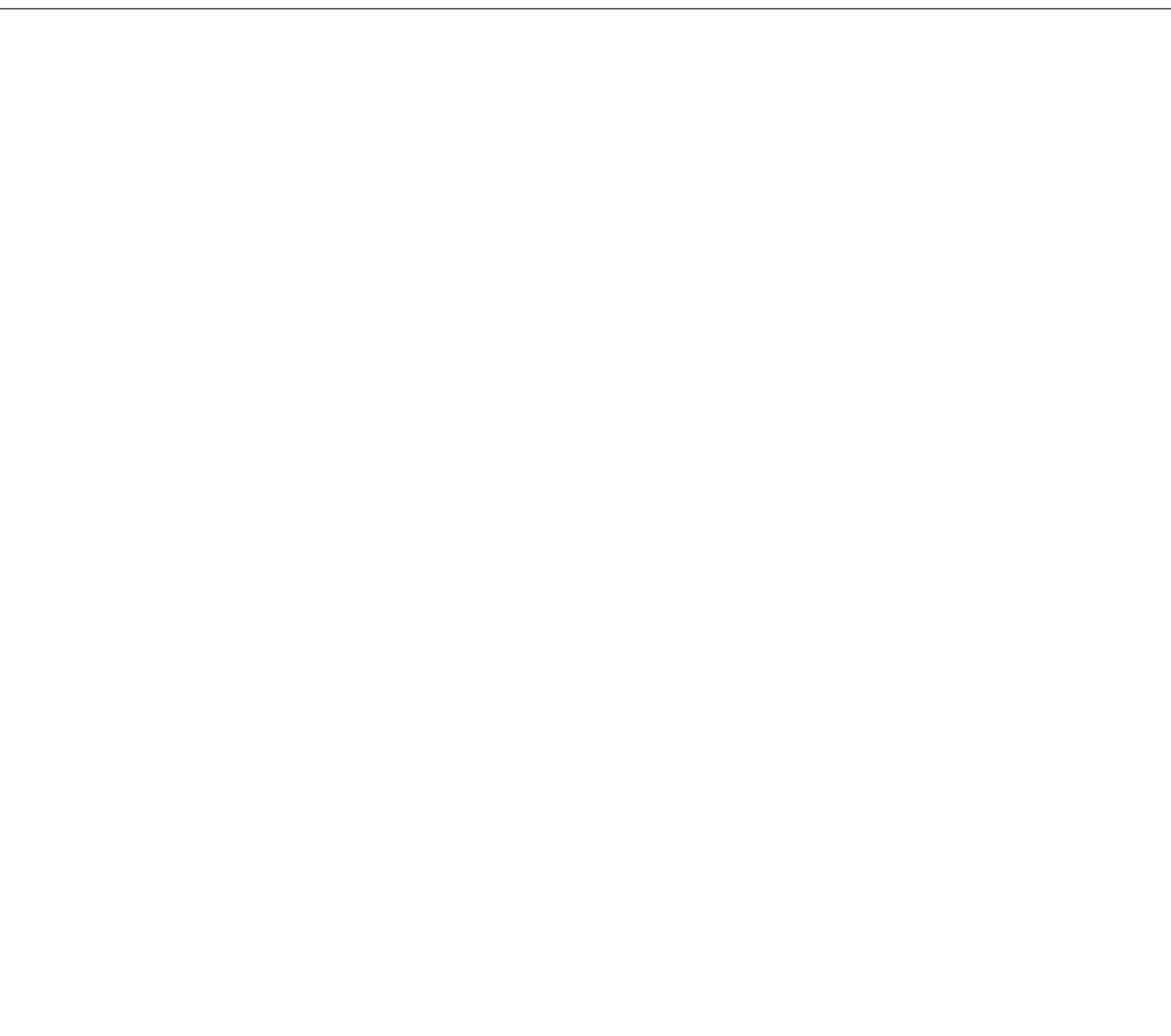
**1** **DETAIL @ STOREFRONT DOOR HEAD**  
 REFERENCED FROM: SCALE: 3/8"=1'-0"



**5** **DETAIL @ STOREFRONT DOOR JAMB**  
 REFERENCED FROM: SCALE: 3/8"=1'-0"



**9** **DETAIL @ STOREFRONT DOOR THRESHOLD**  
 REFERENCED FROM: SCALE: 3/8"=1'-0"



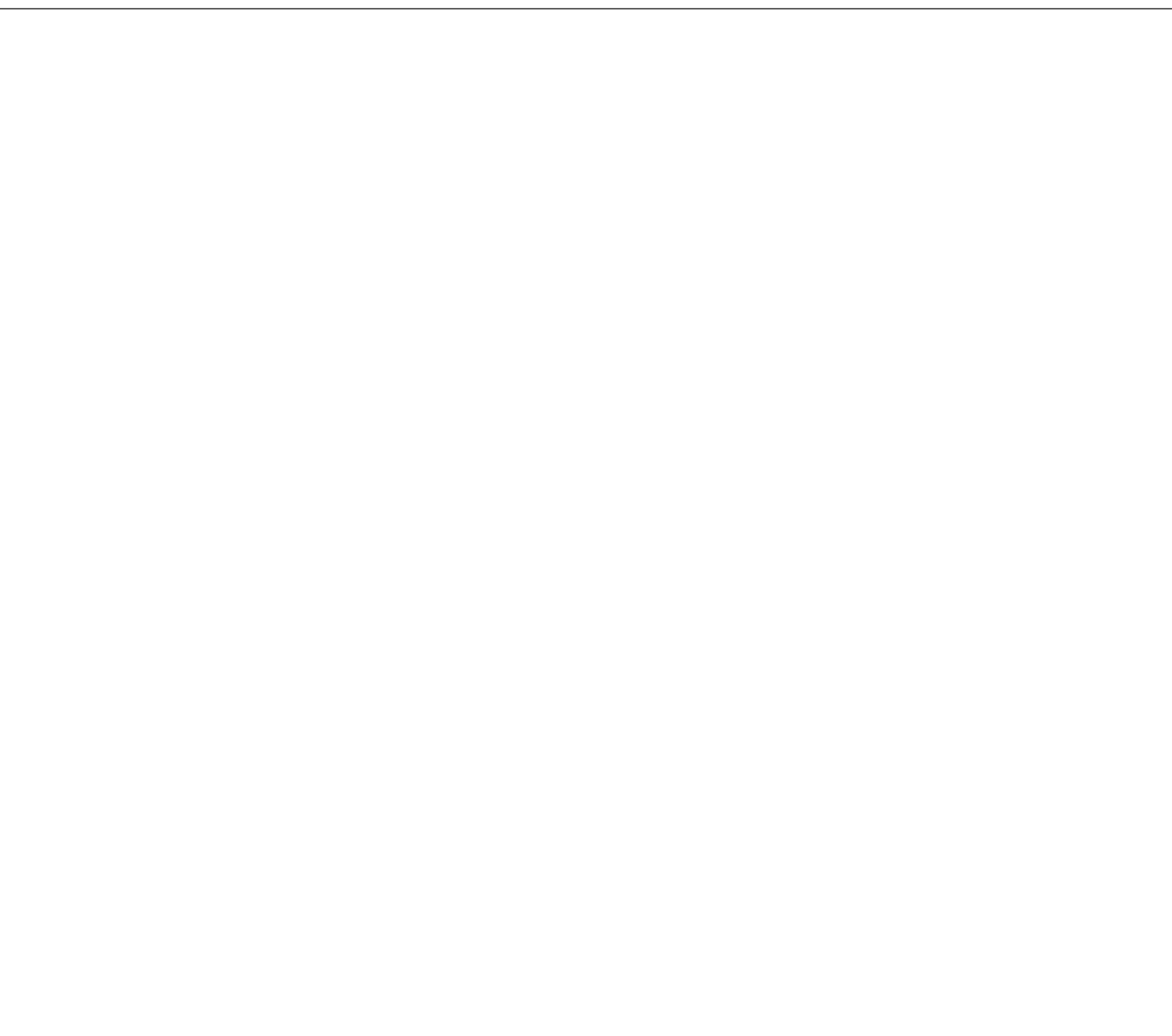
**2** **DETAIL @**  
 REFERENCED FROM: SCALE:



**6** **DETAIL @**  
 REFERENCED FROM: SCALE:



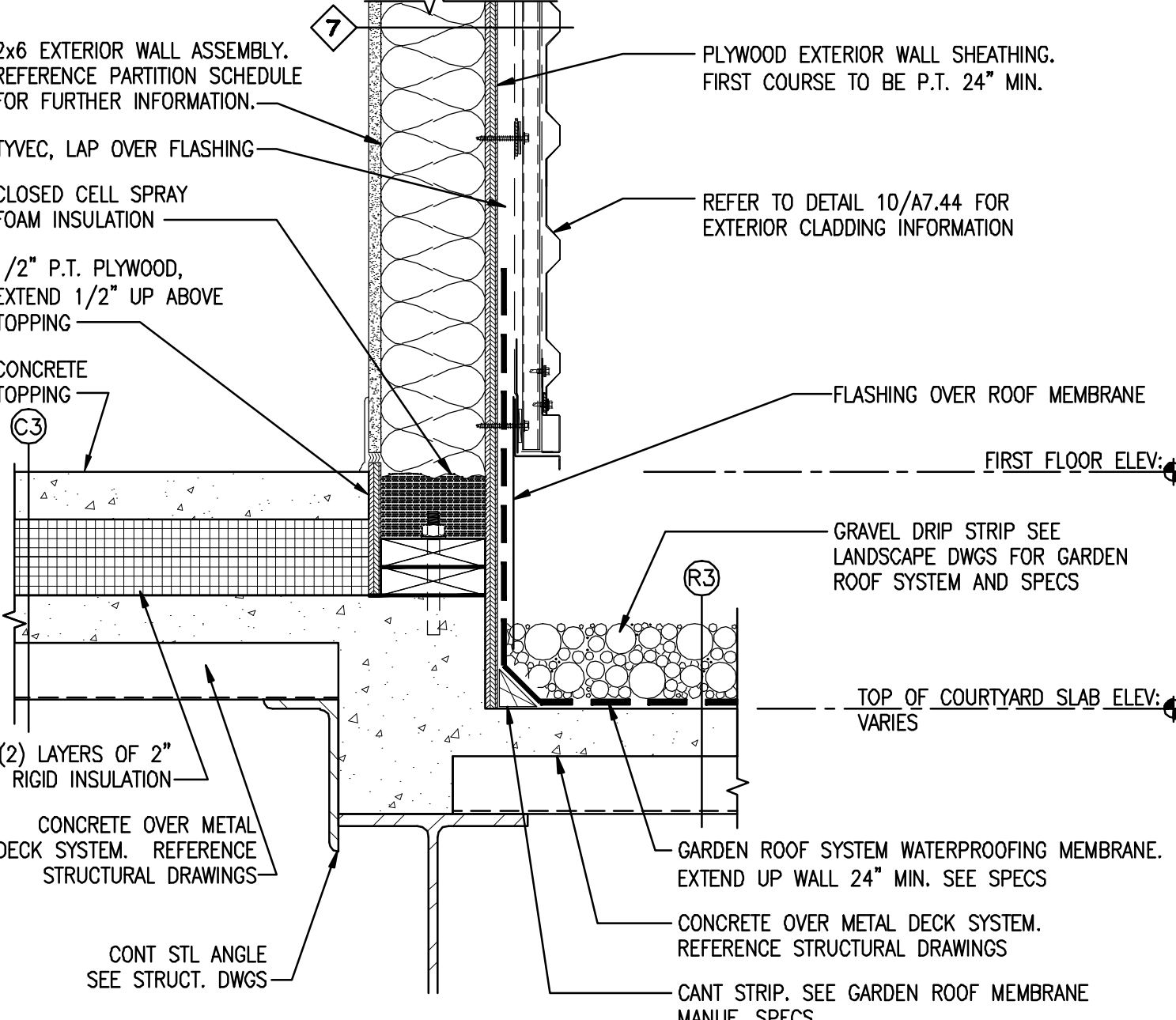
**10** **DETAIL @**  
 REFERENCED FROM: SCALE:



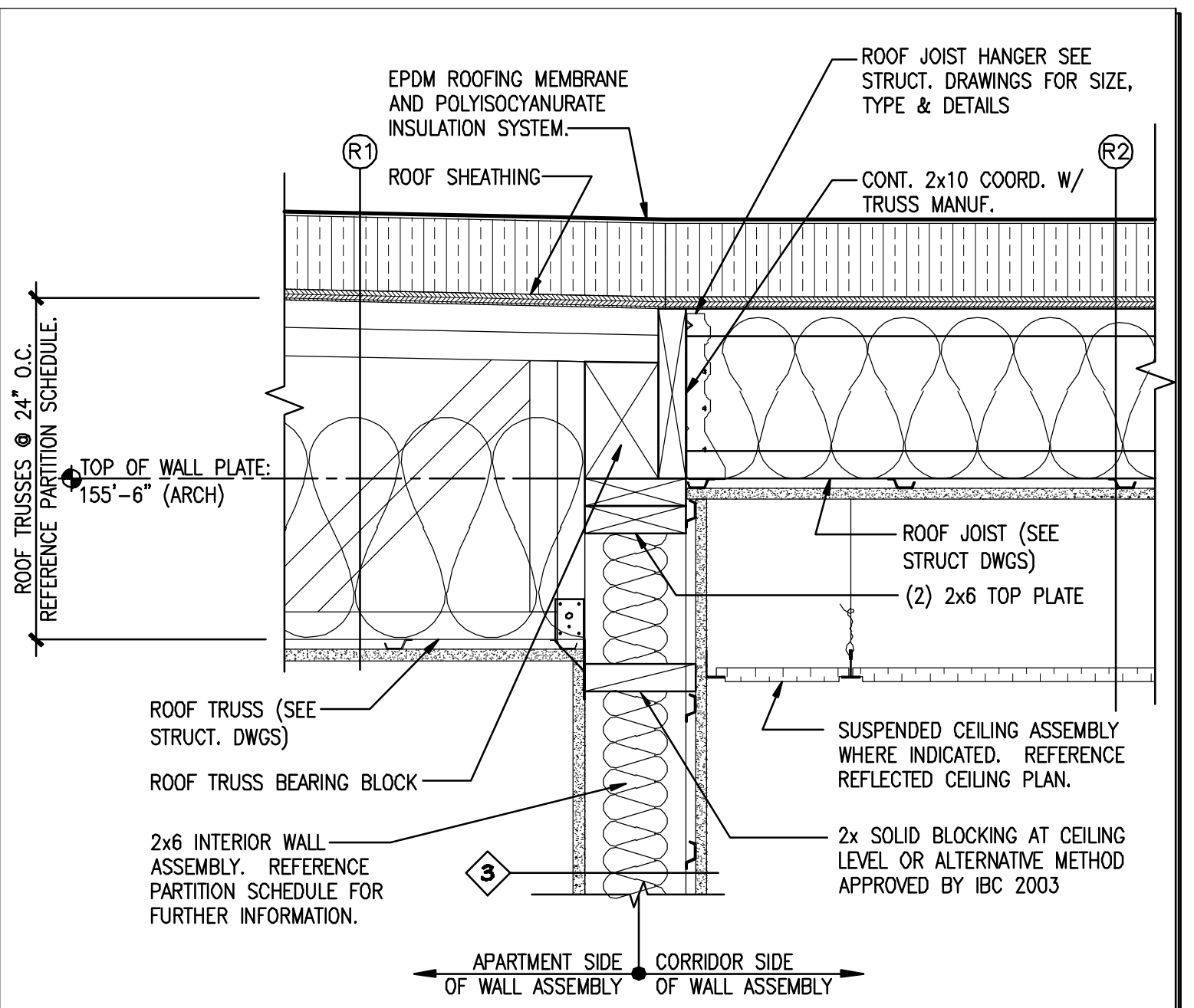
**3** **DETAIL @**  
 REFERENCED FROM: SCALE:



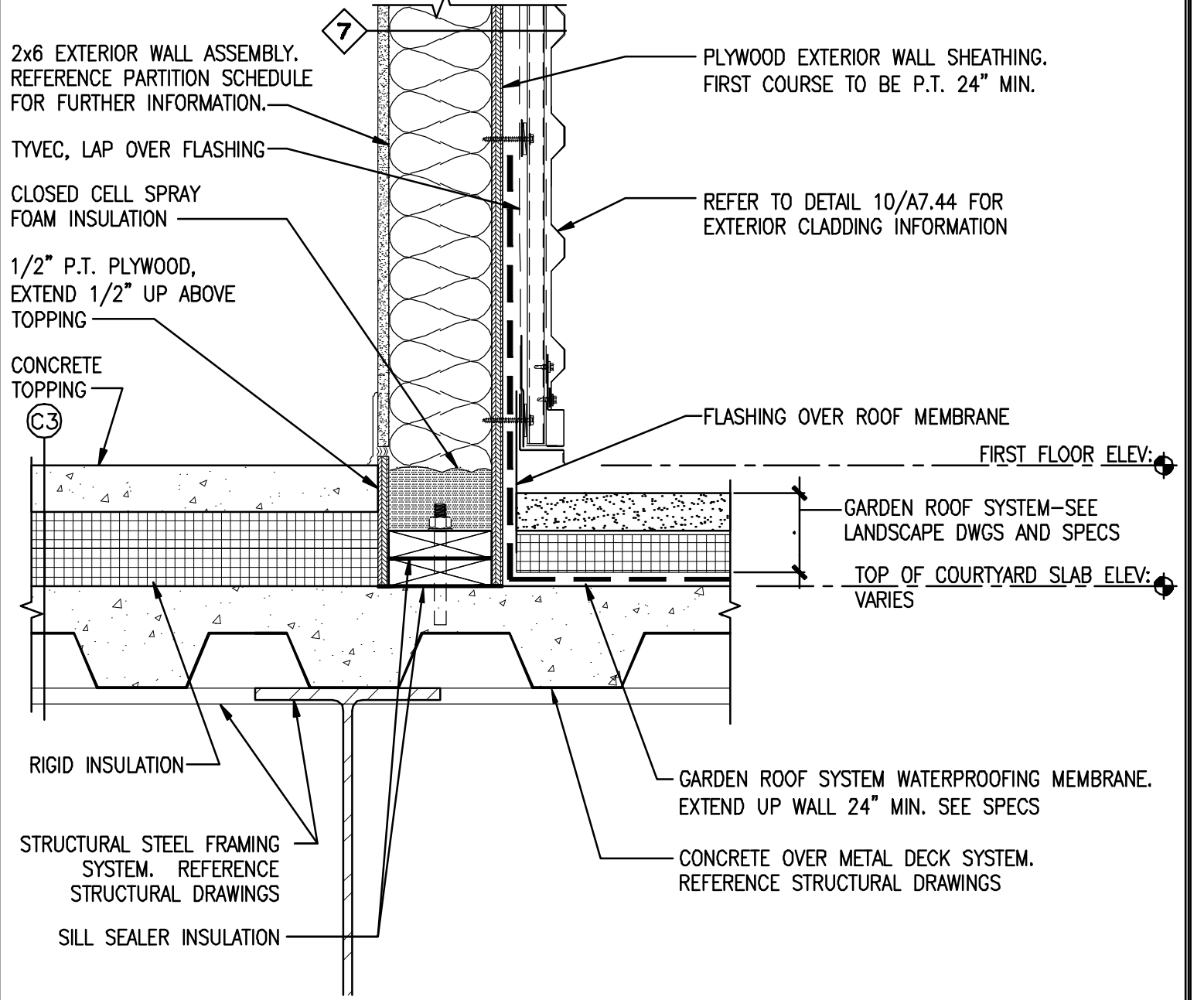
**7** **DETAIL @**  
 REFERENCED FROM: SCALE:



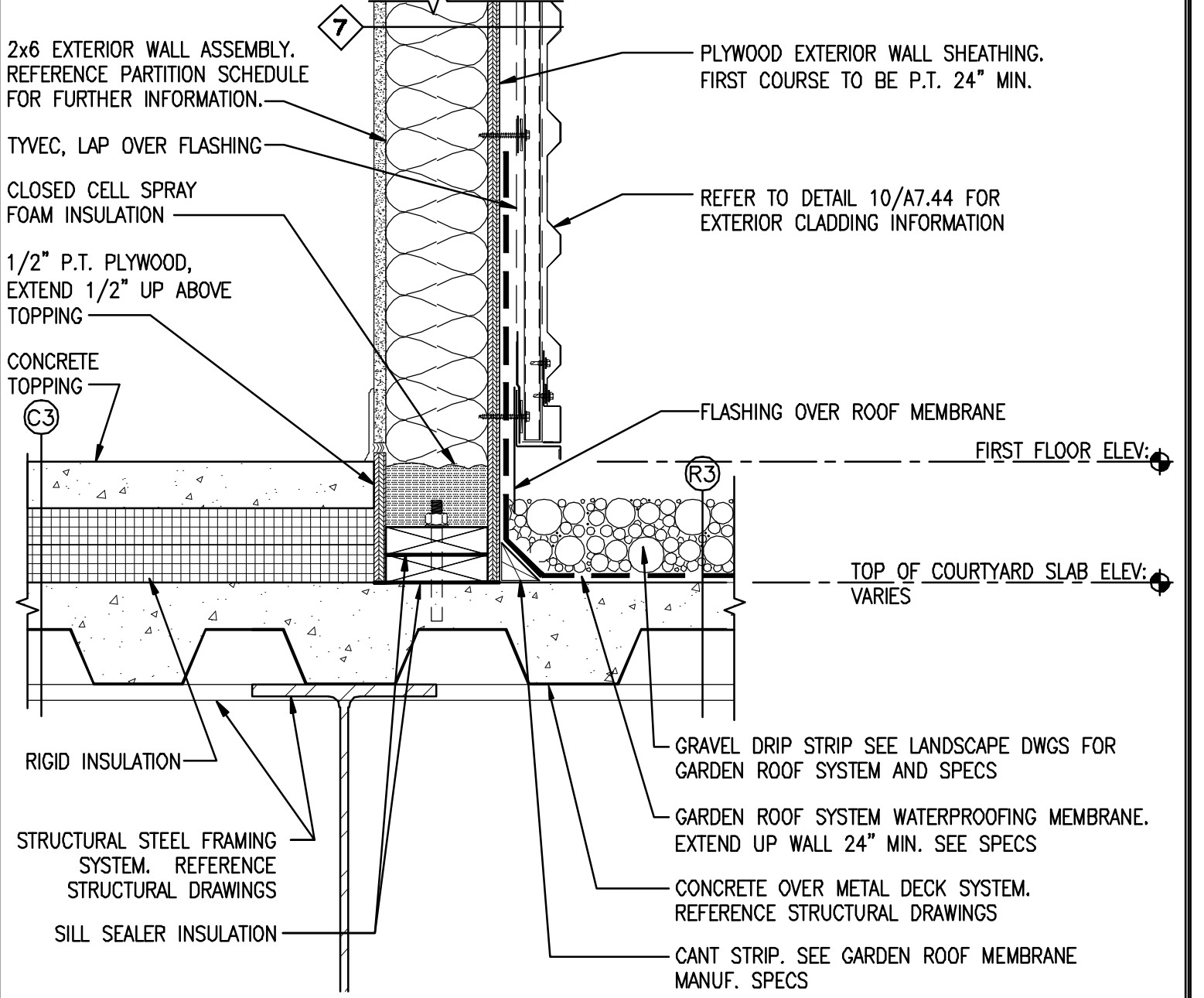
**11** **DETAIL @ EXT. WALL AT C.Y. DRIP STRIP**  
 REFERENCED FROM: SCALE: 1-1/2"=1'-0"



**4** **DETAIL @ PITCHED ROOF TRUSS BEARING**  
 REFERENCED FROM: SCALE: 1-1/2"=1'-0"



**8** **DETAIL @ EXT. WALL AT C.Y. PAVERS**  
 REFERENCED FROM: SCALE: 1-1/2"=1'-0"



**12** **DETAIL @ EXT. WALL AT C.Y. DRIP STRIP**  
 REFERENCED FROM: SCALE: 1-1/2"=1'-0"

**CWS Architects**  
 Architecture  
 Space Planning  
 Value Design  
 434 Cumberland Avenue  
 Portland, ME 04101  
 Phone: (207) 774-4441  
 Fax: (207) 774-4016  
 www.CWSarch.com

**SOUTHERN MAINE STUDENT HOUSING LLC**  
 247 COMMERCIAL STREET  
 ROCKPORT, MAINE 04856  
 TEL: (207) 236-4067

**PIZZAGALLI CONSTRUCTION**  
 131 PRESUMPSCOT STREET  
 PORTLAND, ME 04103  
 TEL: (207) 874-2323  
 FAX: (207) 874-2727

**BAYSIDE VILLAGE - A STUDENT HOUSING COMPLEX**  
 132 MARGINAL WAY  
 PORTLAND, MAINE

Project No: 2006-432/BVP  
 Drawing Title: **MISC. DETAILS**  
 Scale: AS NOTED  
 Date: SEPTEMBER 14, 2007  
 Revisions:  
 Drawing Number: **A7.10**