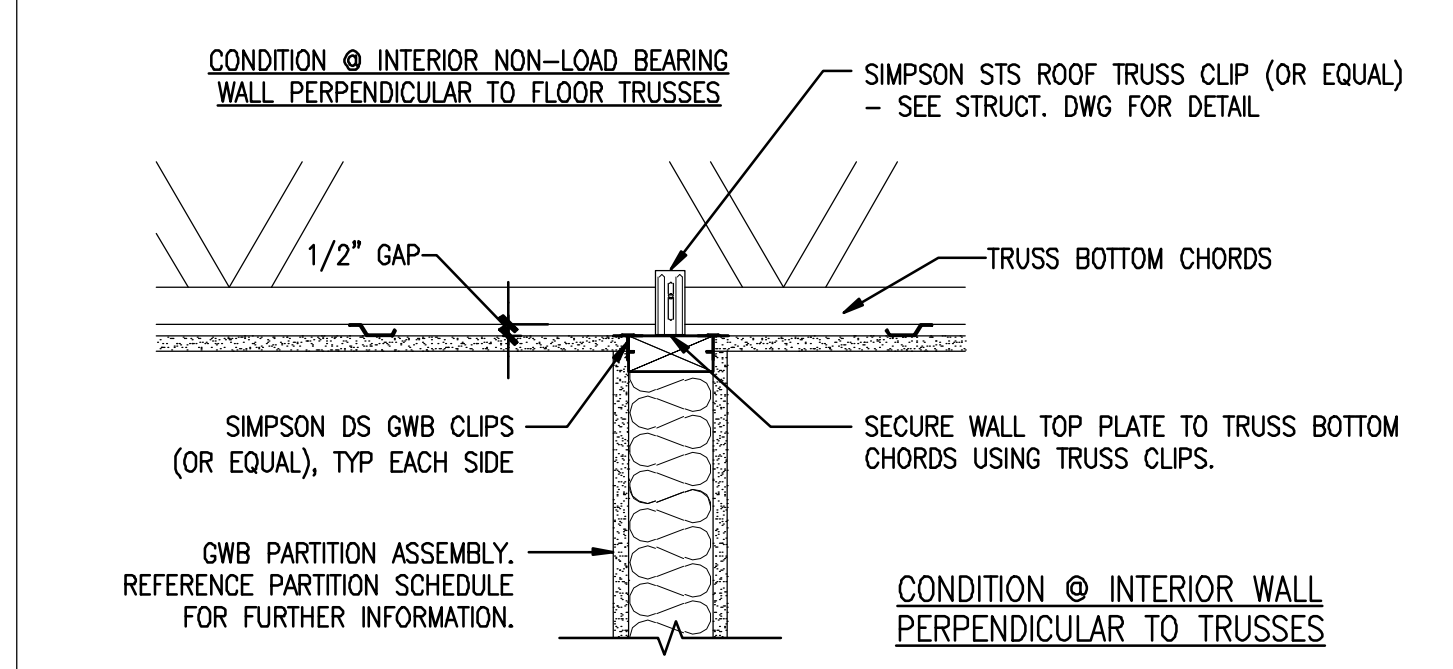
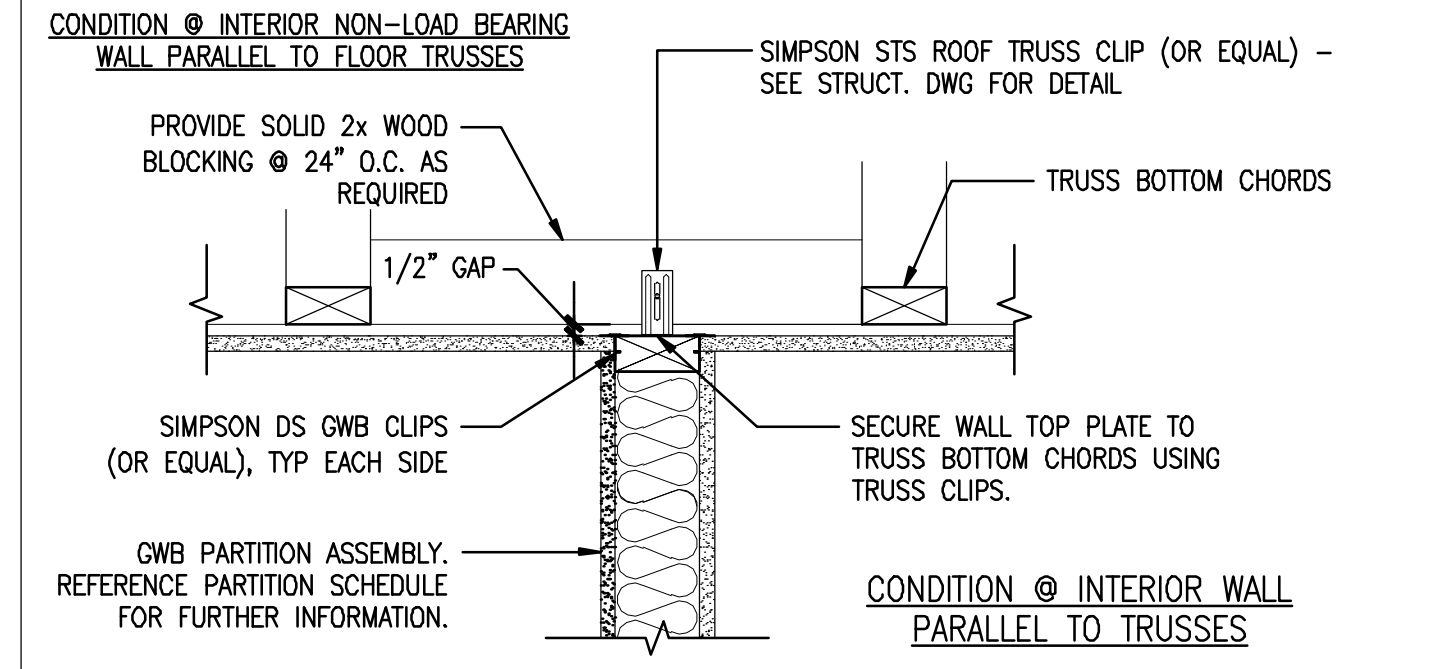
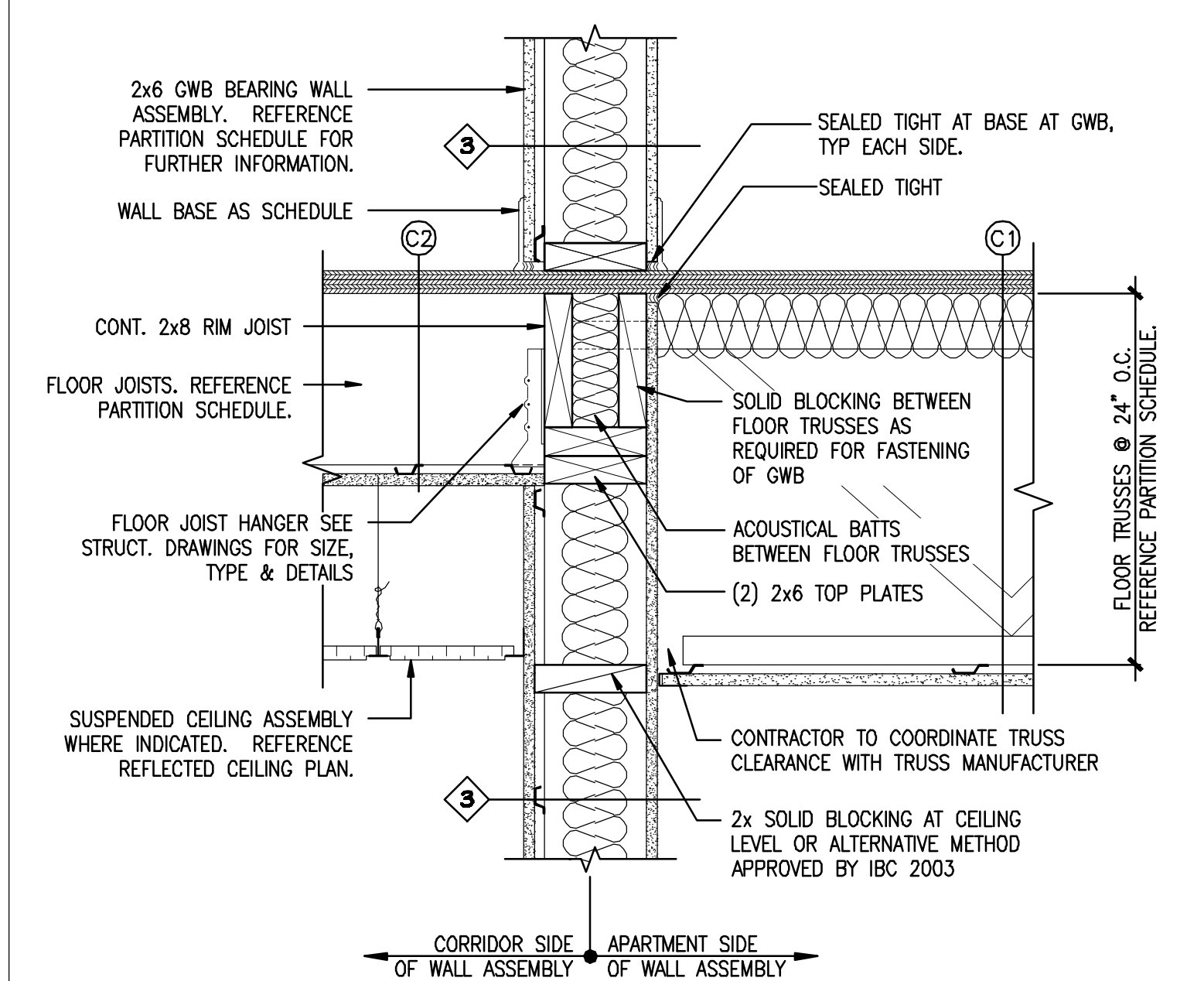
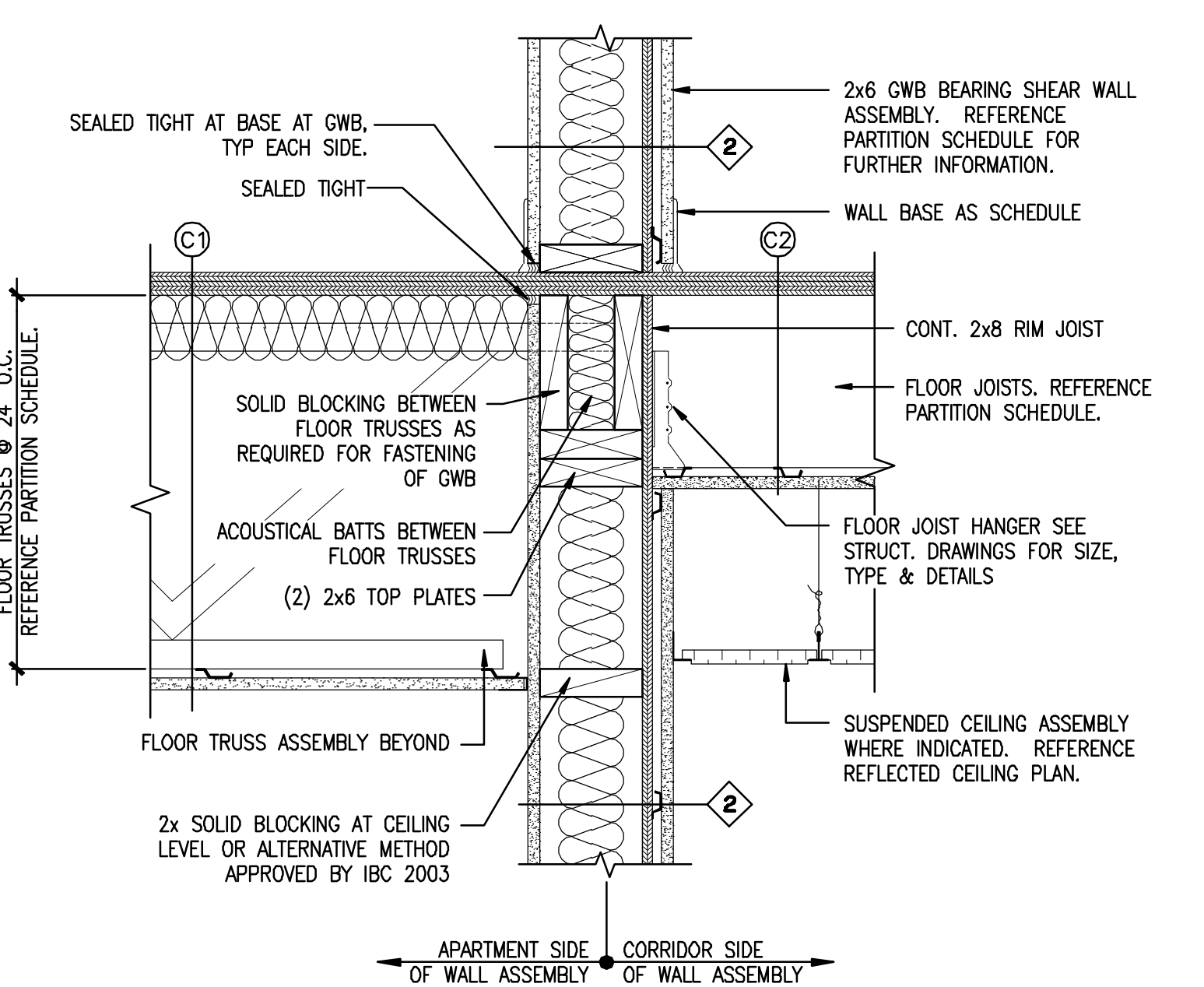


**1** **DETAIL @ UNIT ENTRY DOOR IN SHEAR WALL**  
 REFERENCED FROM: SCALE: 1/2" = 1'-0"

**2** **DETAIL @ UNIT ENTRY DOOR**  
 REFERENCED FROM: SCALE: 1/2" = 1'-0"

**3** **DETAIL @ UNIT COMMON WALL**  
 REFERENCED FROM: SCALE: 1/2" = 1'-0"

**4** **DETAIL @ ROOF/UNIT COMMON WALL**  
 REFERENCED FROM: SCALE: 1/2" = 1'-0"

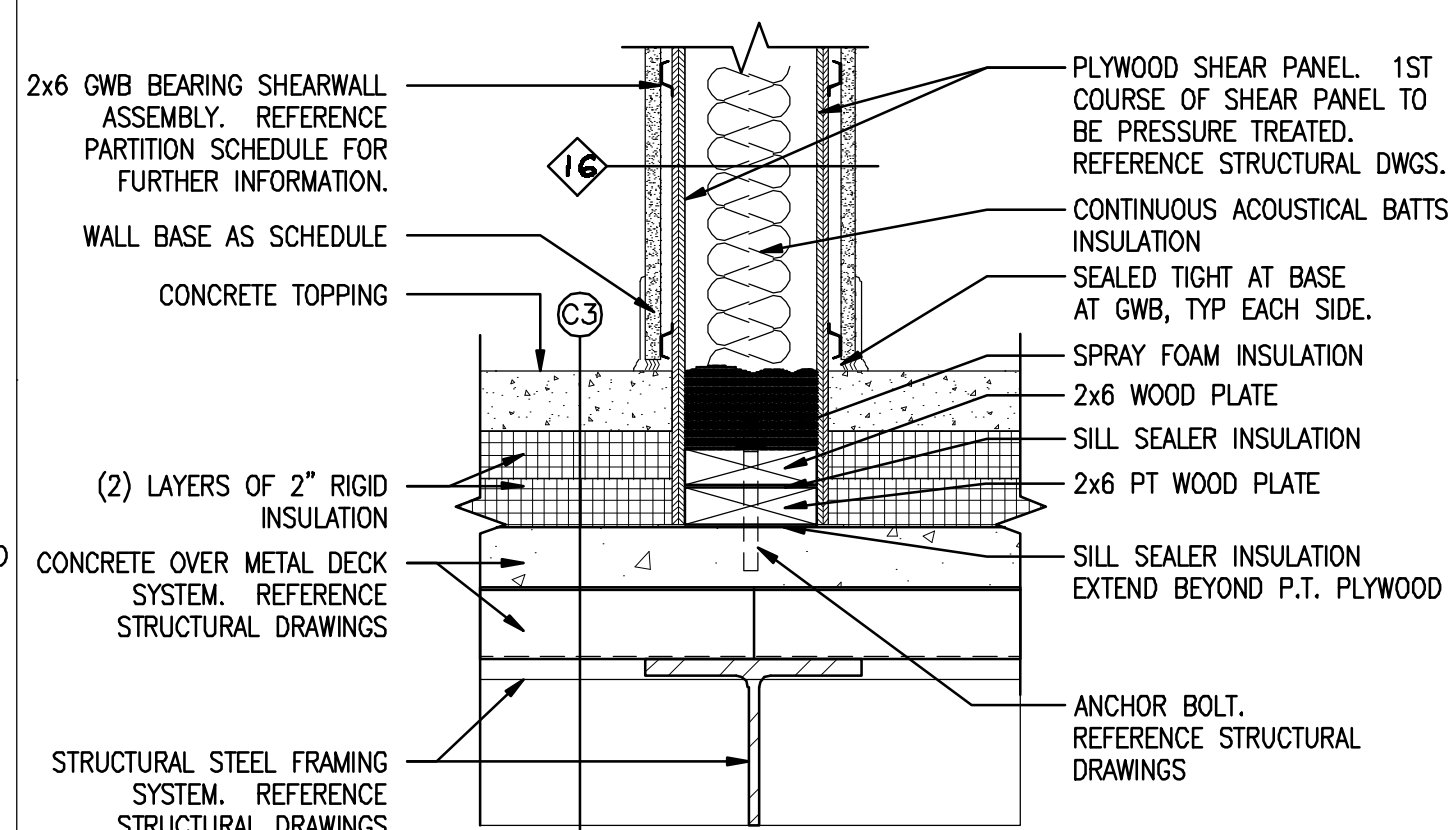
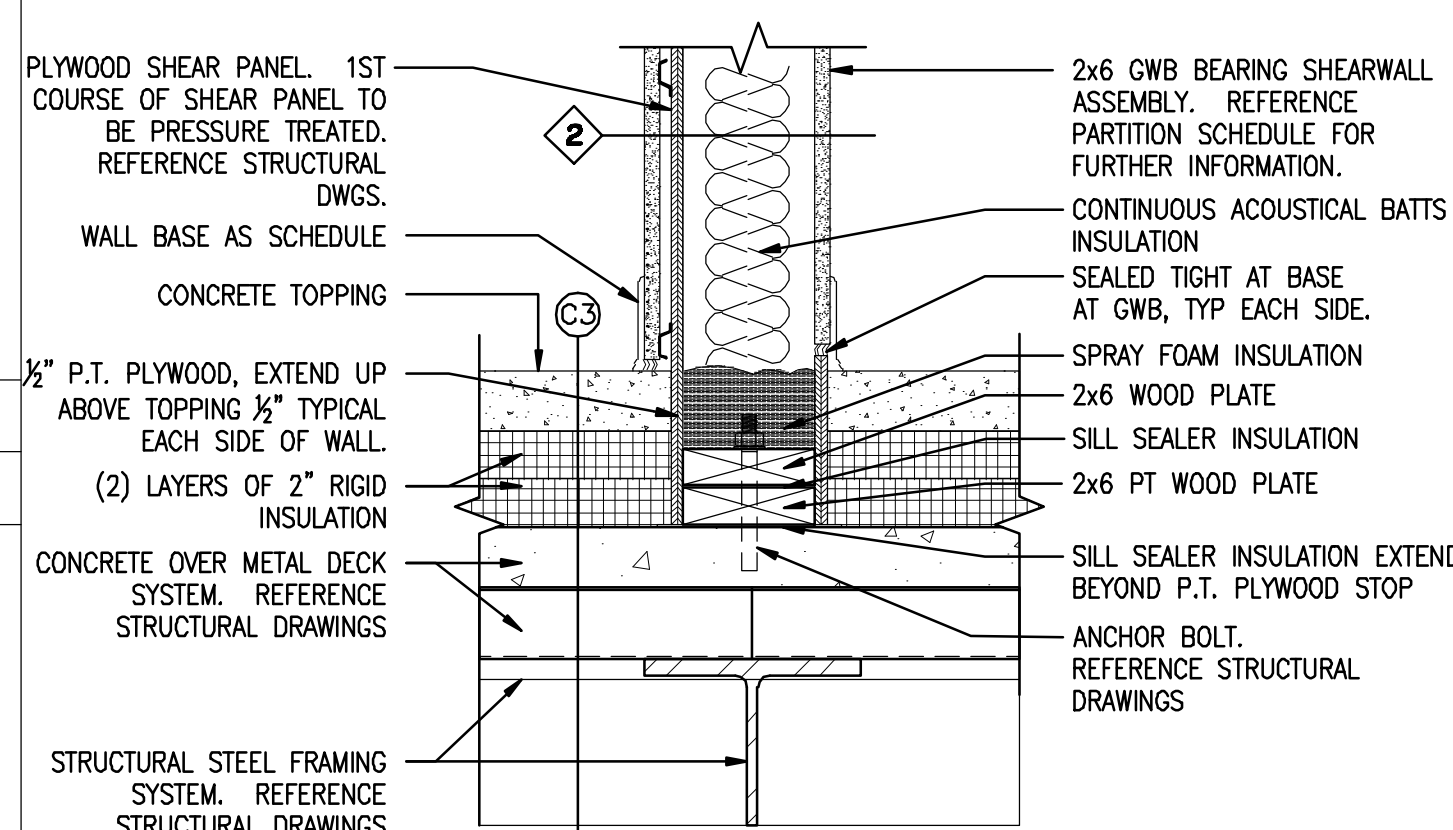
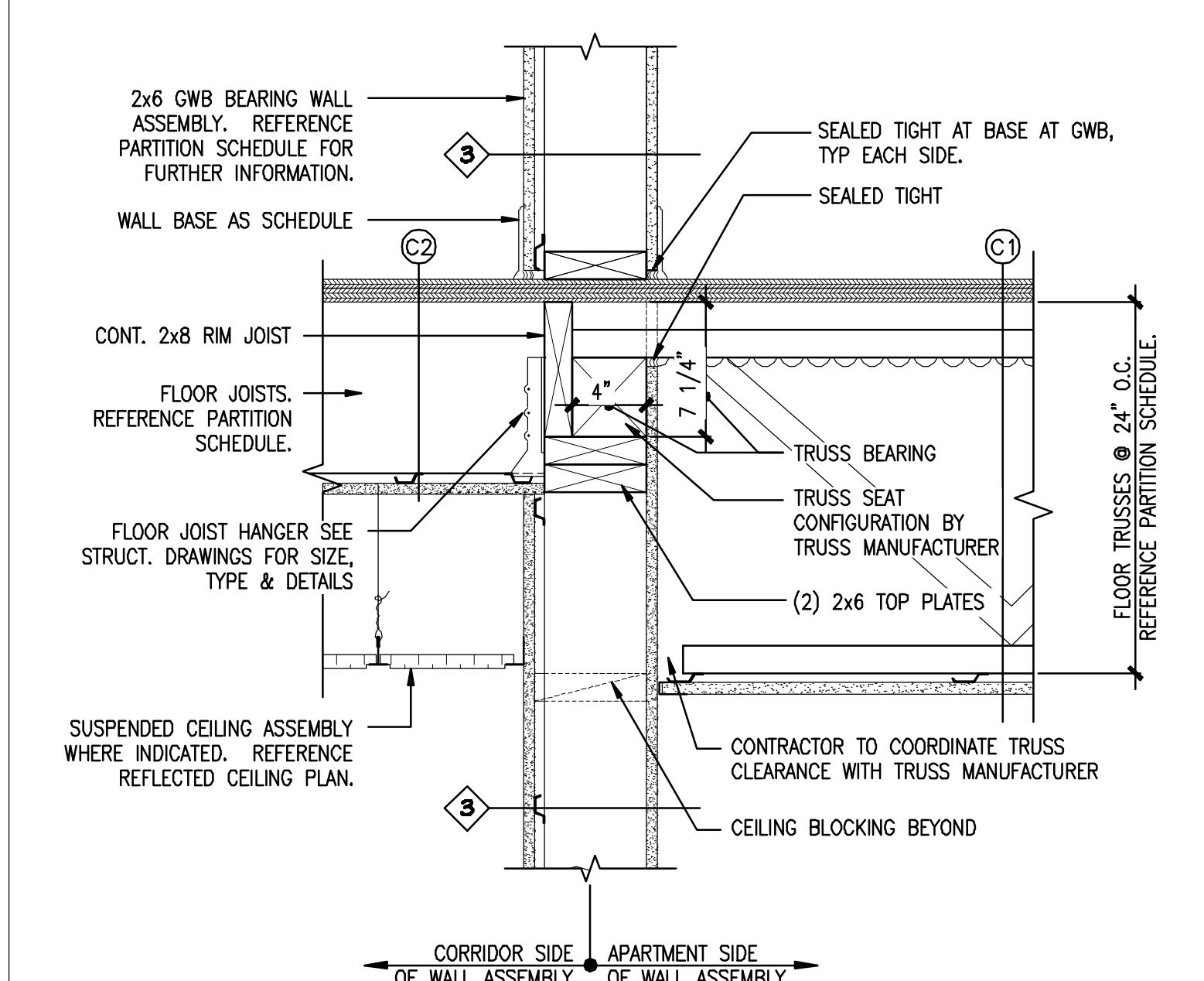
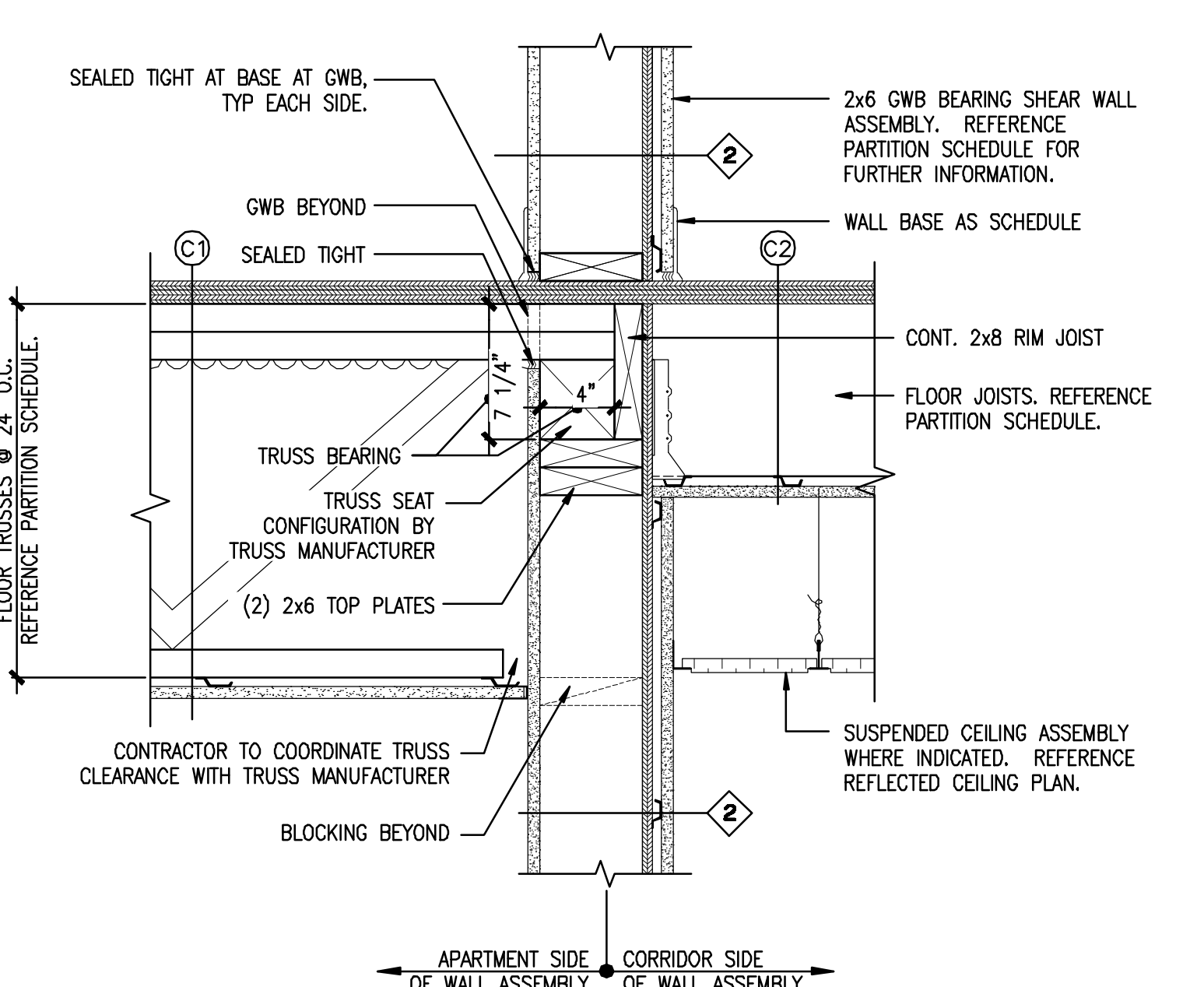


**5** **DETAIL @ CORRIDOR BEARING SHEARWALL**  
 REFERENCED FROM: SCALE: 1/2" = 1'-0"

**6** **DETAIL @ CORRIDOR BEARING WALL**  
 REFERENCED FROM: SCALE: 1/2" = 1'-0"

**7** **DET'L @ NON-BEARING WALLS & CEILING**  
 REFERENCED FROM: SCALE: 1/2" = 1'-0"

**8** **DET'L @ NON-BEARING WALLS & CEILING**  
 REFERENCED FROM: SCALE: 1/2" = 1'-0"

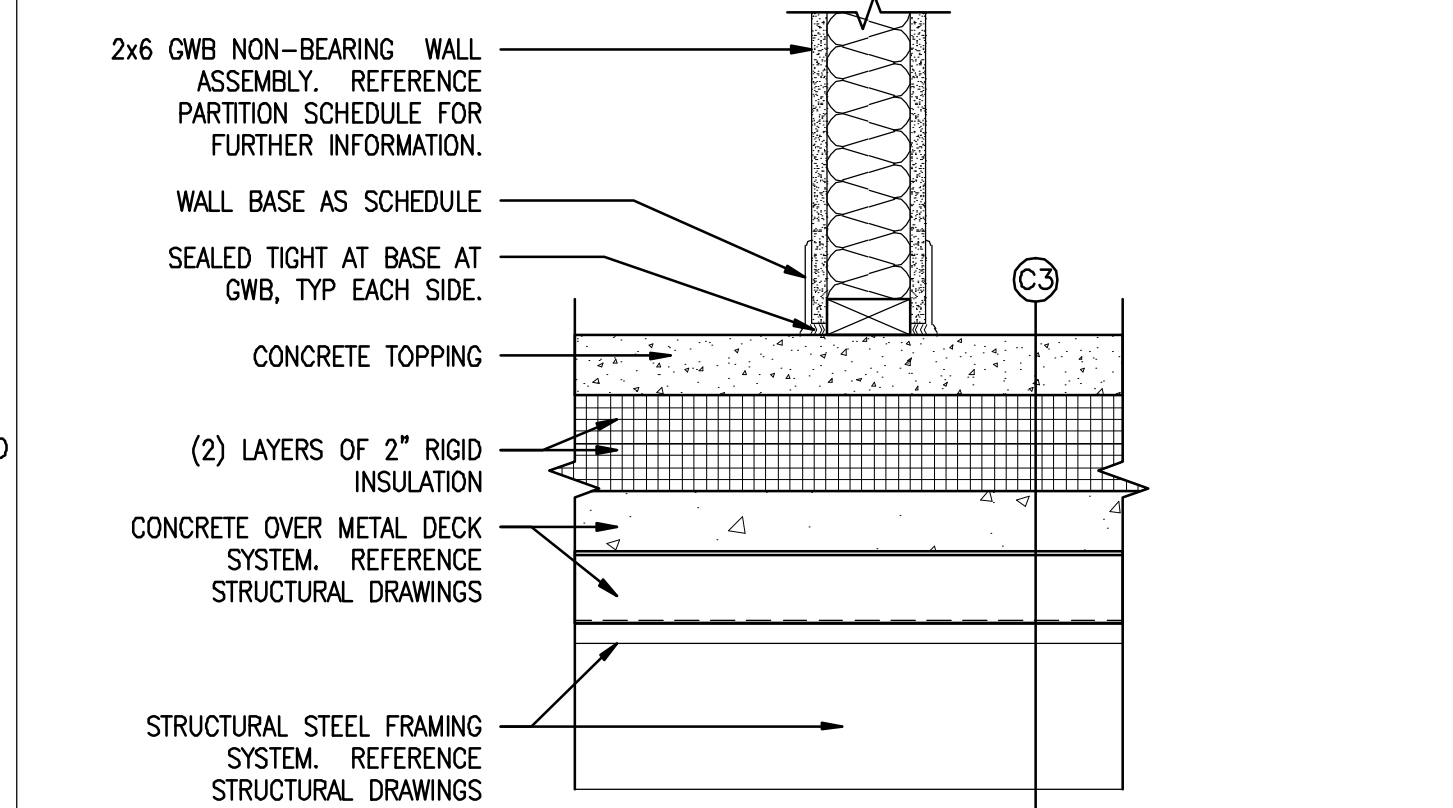
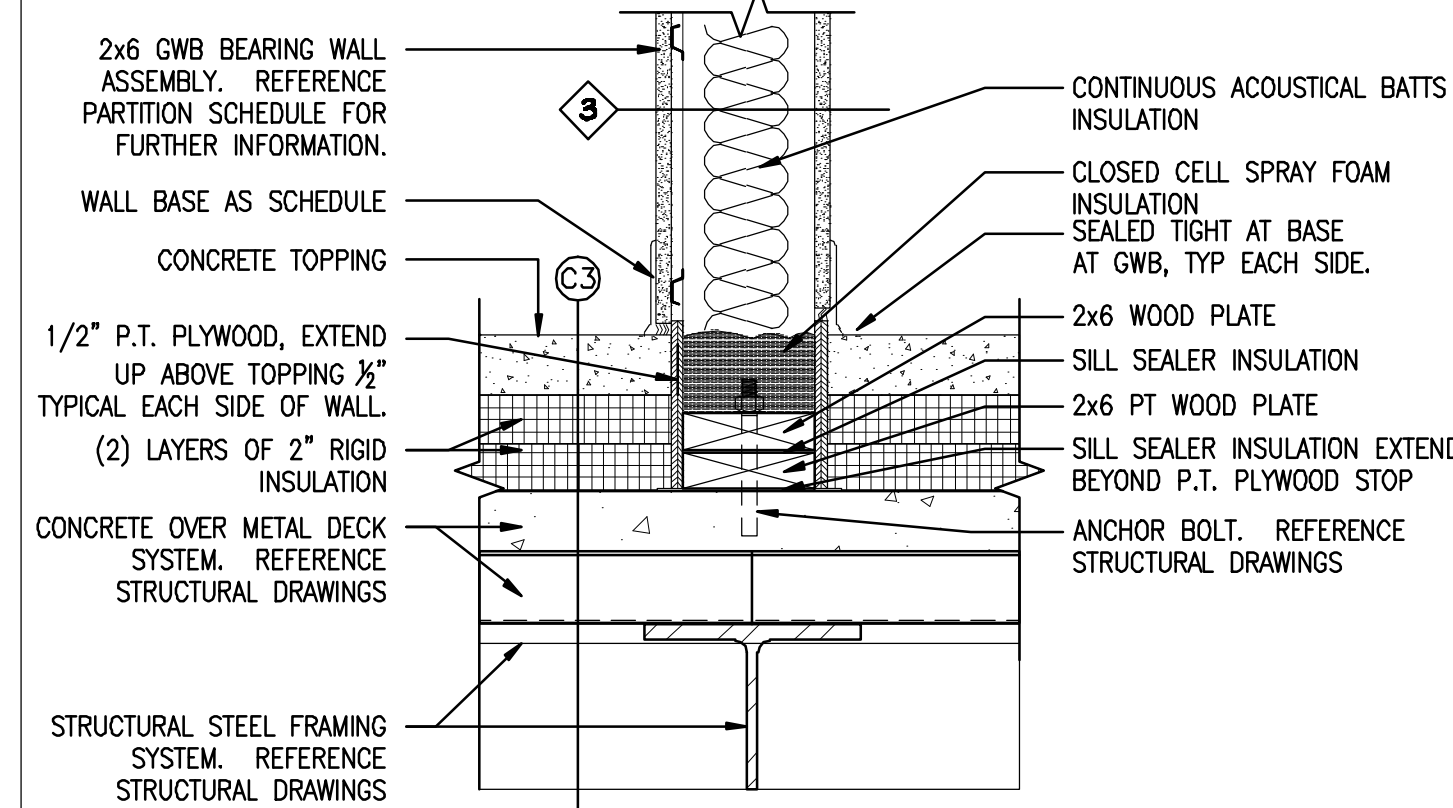


**13** **DETAIL @ CORRIDOR BEARING SHEARWALL @ TRUSS**  
 REFERENCED FROM: SCALE: 1/2" = 1'-0"

**14** **DETAIL @ CORRIDOR BEARING WALL @ TRUSS**  
 REFERENCED FROM: SCALE: 1/2" = 1'-0"

**11** **BASE OF WALL DETAIL @ CORRIDOR WALL**  
 REFERENCED FROM: SCALE: 1/2" = 1'-0"

**12** **BASE OF WALL DET @ UNIT COMMON WALL**  
 REFERENCED FROM: SCALE: 1/2" = 1'-0"



**13** **DETAIL @ CORRIDOR BEARING SHEARWALL @ TRUSS**  
 REFERENCED FROM: SCALE: 1/2" = 1'-0"

**14** **DETAIL @ CORRIDOR BEARING WALL @ TRUSS**  
 REFERENCED FROM: SCALE: 1/2" = 1'-0"

**15** **BASE OF WALL DETAIL @ CORRIDOR WALL**  
 REFERENCED FROM: SCALE: 1/2" = 1'-0"

**16** **BASE OF WALL DET'L @ NON-BEARING WALL**  
 REFERENCED FROM: SCALE: 1/2" = 1'-0"

**CWS Architects**  
 Architecture  
 Space Planning  
 Value Design  
 434 Cumberland Avenue  
 Portland, ME 04101  
 Phone: (207) 774-4441  
 Fax: (207) 774-4016  
 www.CWSArch.com

**BENEDICT WALTER**  
 REGISTERED ARCHITECT  
 NO. 1947  
 STATE OF MAINE

Owner: **SOUTHERN MAINE STUDENT HOUSING LLC**  
 247 COMMERCIAL STREET  
 ROCKPORT, MAINE 04856  
 TEL: (207) 236-4067

Contractor: **PIZZAGALLI CONSTRUCTION**  
 131 PRESUMPSCOT STREET  
 PORTLAND, ME 04103  
 TEL: (207) 874-2323  
 FAX: (207) 874-2727

**BAYSIDE VILLAGE - A STUDENT HOUSING COMPLEX**  
 132 MARGINAL WAY  
 PORTLAND, MAINE

Project No: 2006-432/BVP

Drawing Title: **MISC. DETAILS**

Scale: AS NOTED  
 Date: SEPTEMBER 14, 2007

Revisions:

Drawing Number: **A7.05**

ISSUED FOR CONSTRUCTION