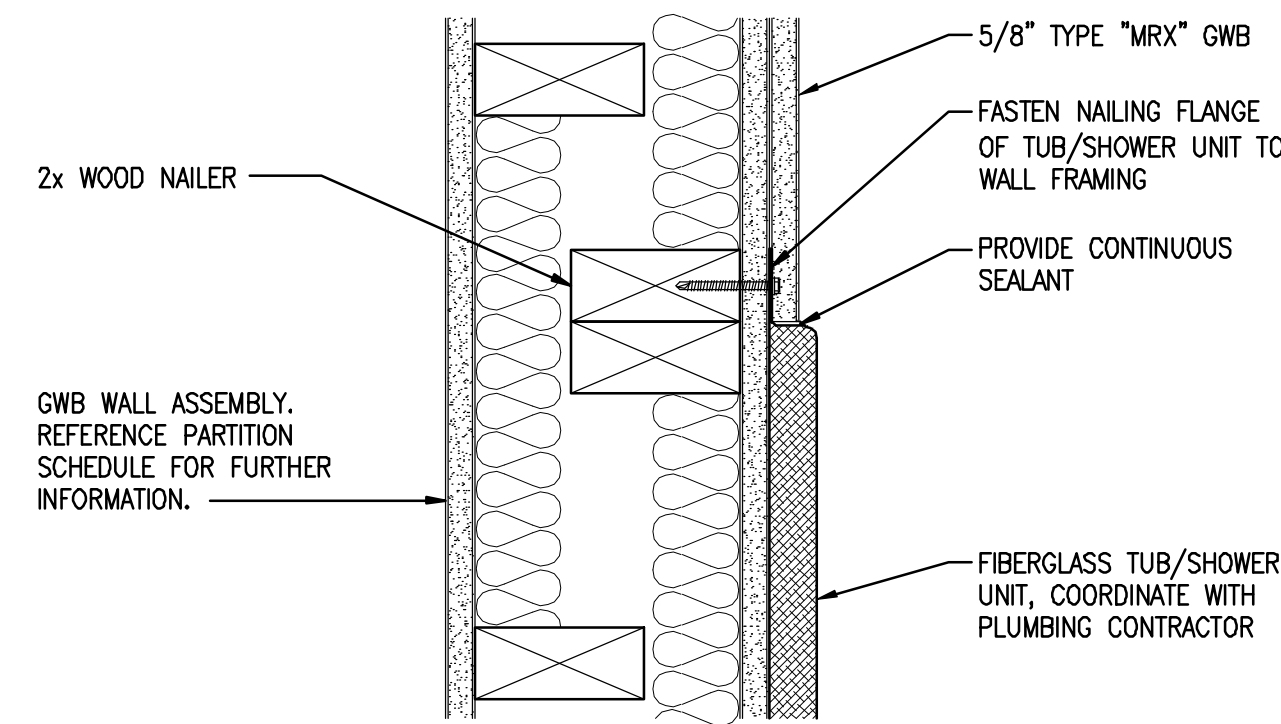
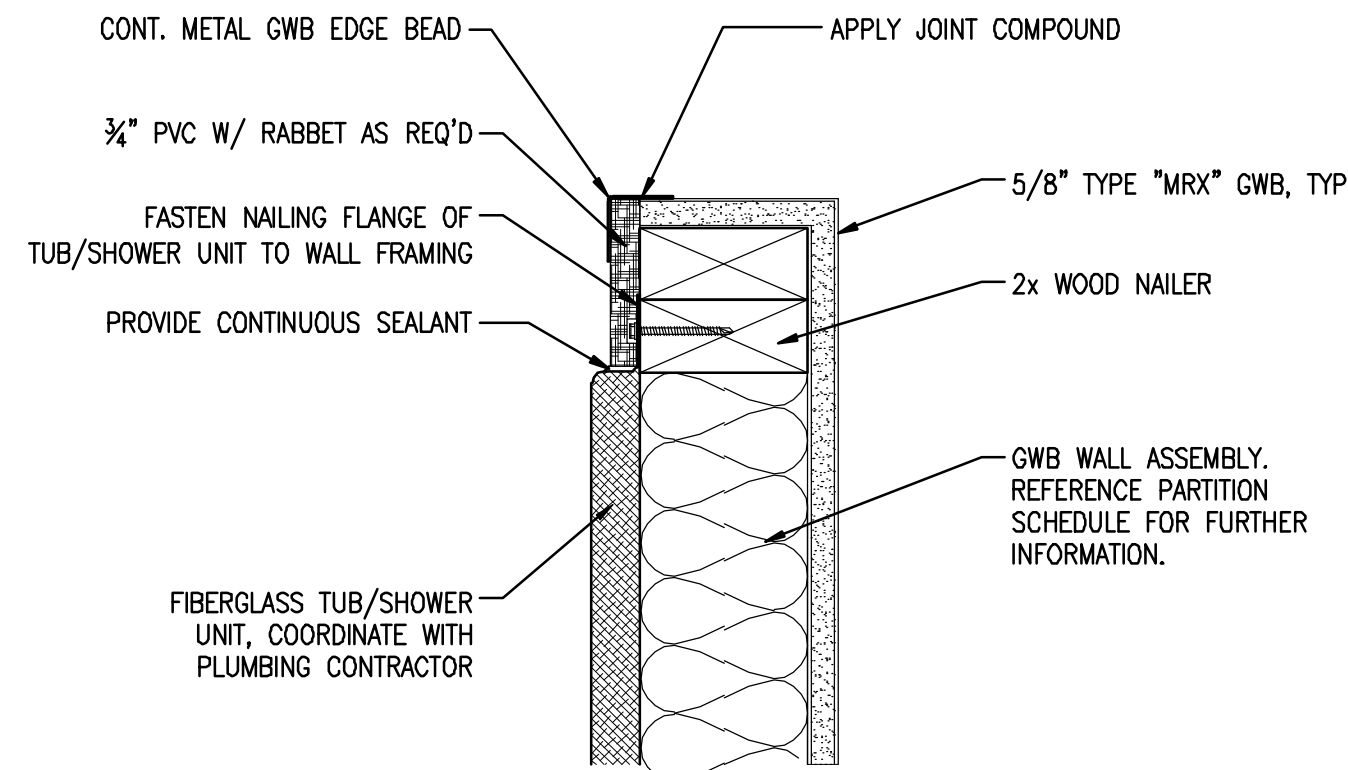


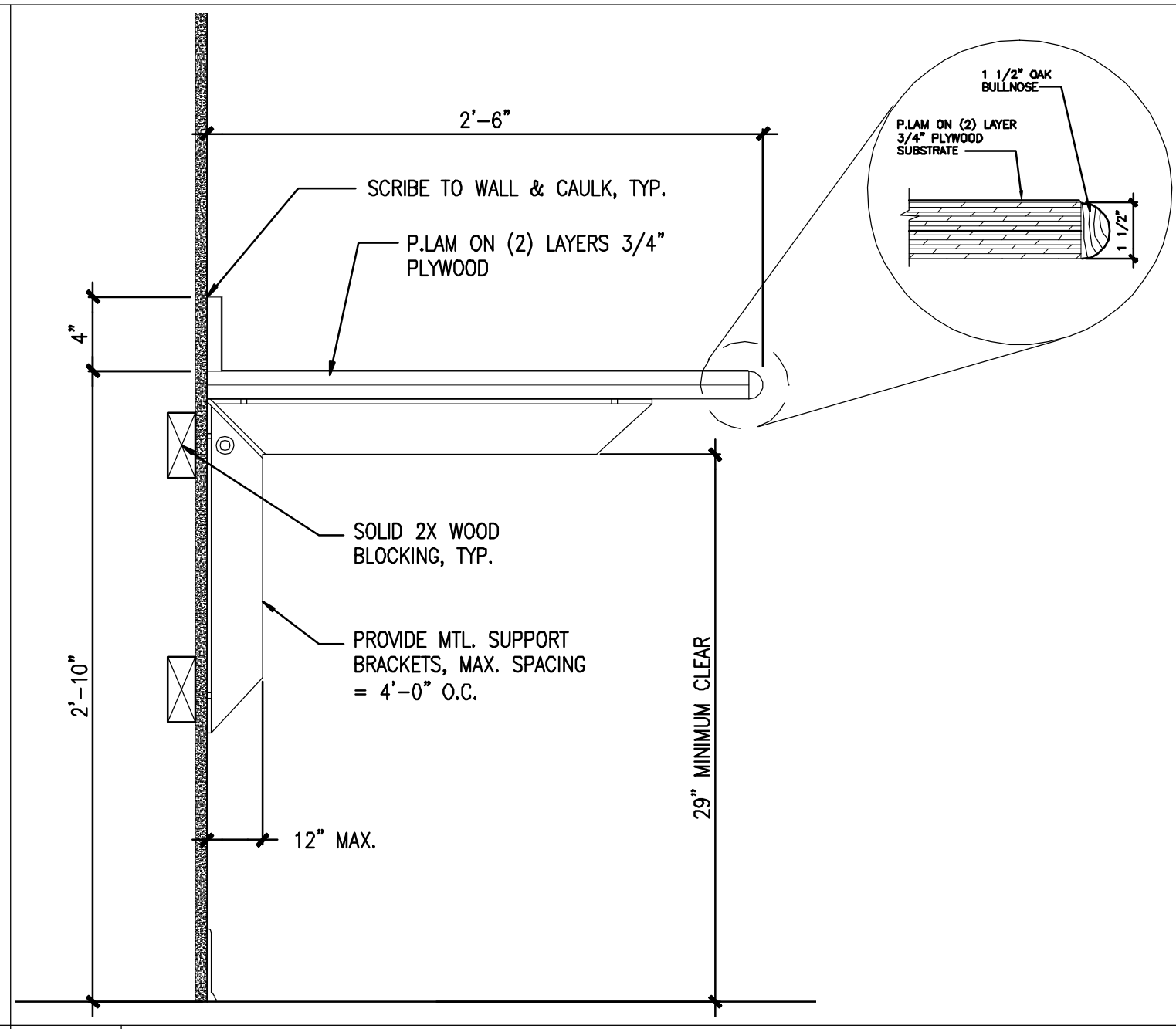
1 **DETAIL @ CLOSET SHELF AND ROD**
 REFERENCED FROM: SCALE: 1-1/2" = 1'-0"



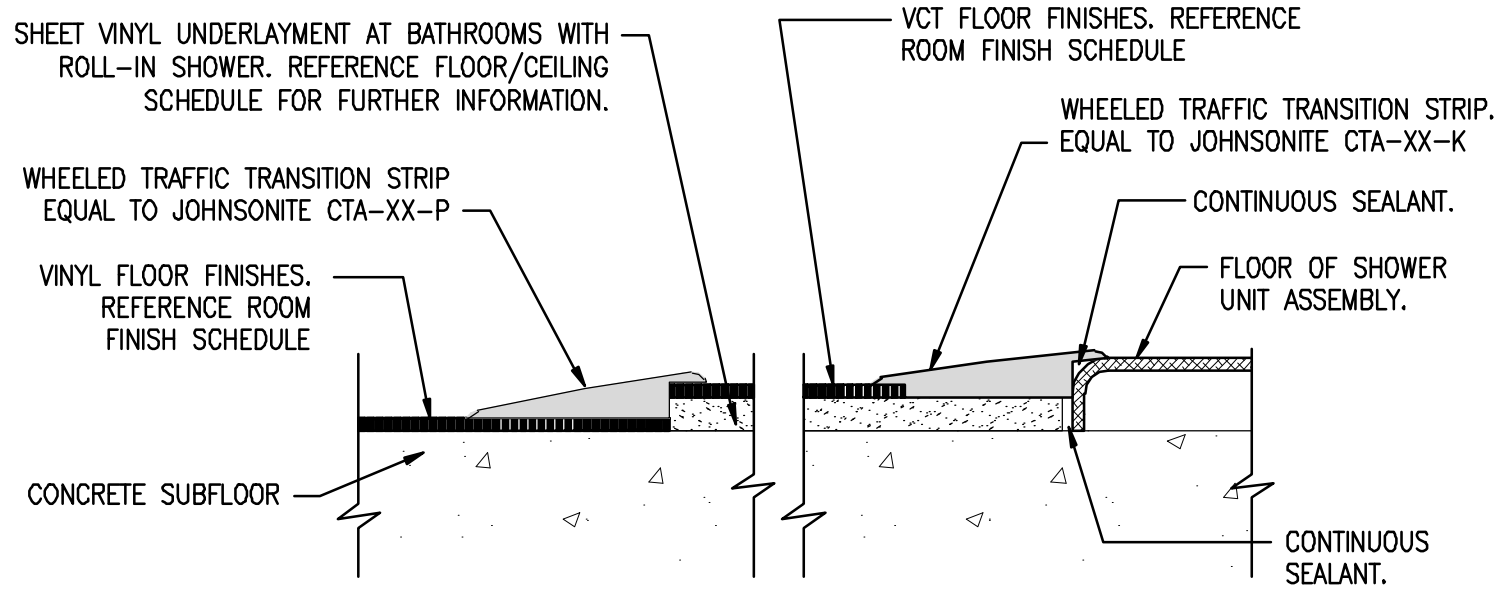
2 **TUB/SHOWER AT UNIT DEMISING WALL**
 REFERENCED FROM: SCALE: 3" = 1'-0"



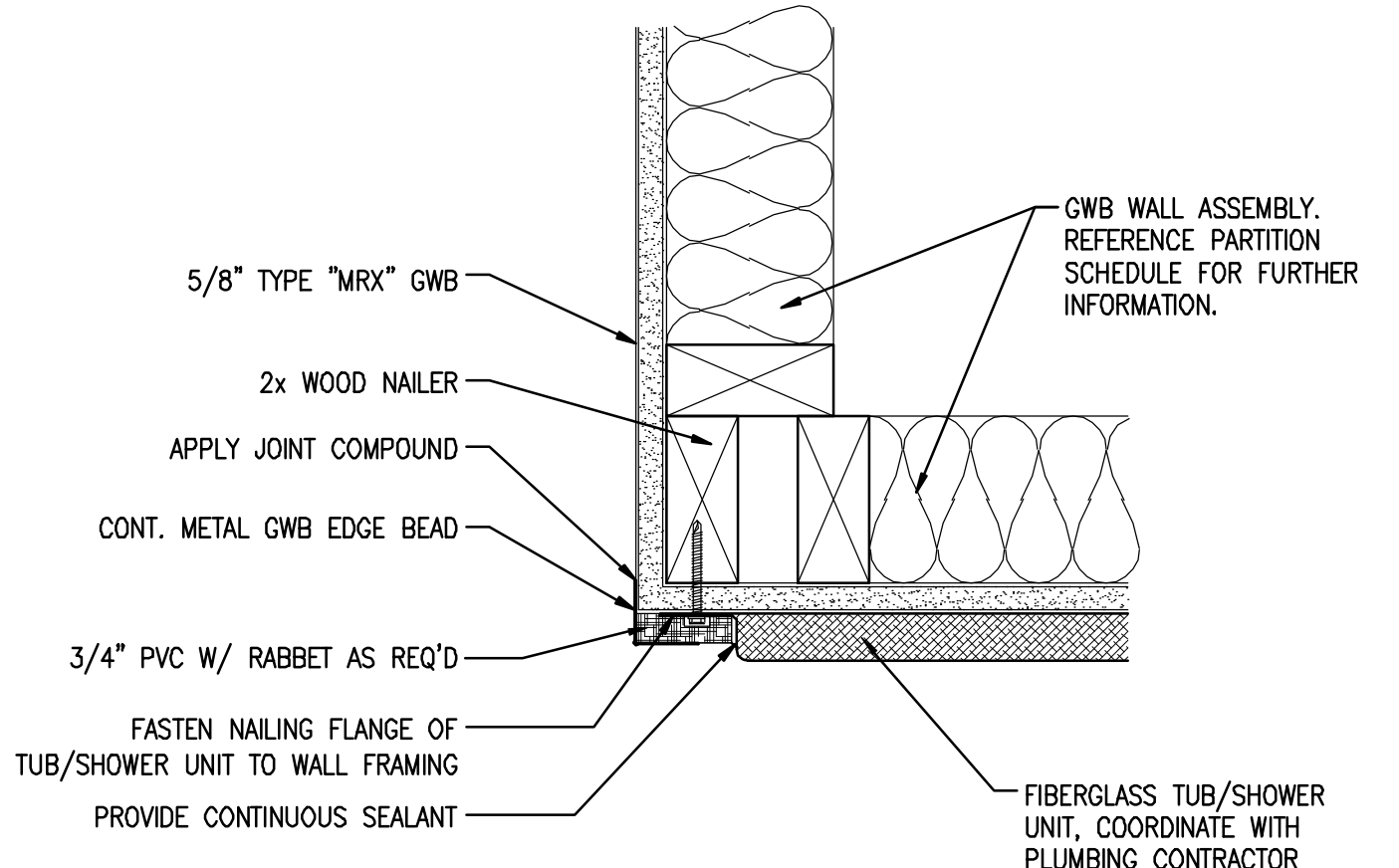
3 **TUB/SHOWER AT BATHROOM PARTITION WALL**
 REFERENCED FROM: SCALE: 3" = 1'-0"



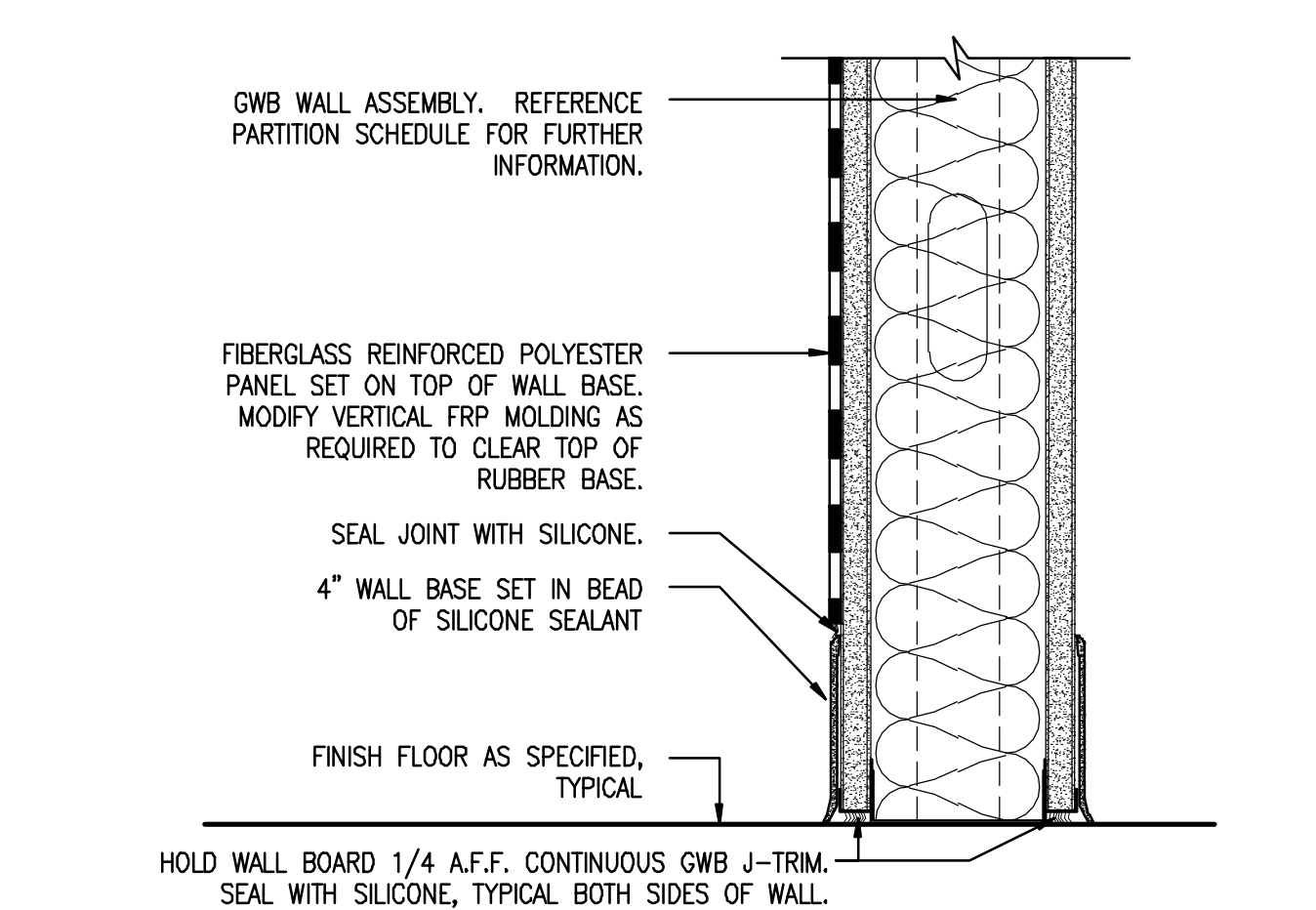
4 **DETAIL @ LAUNDRY FOLDING COUNTER**
 REFERENCED FROM: A4.23 SCALE: 1-1/2" = 1'-0"



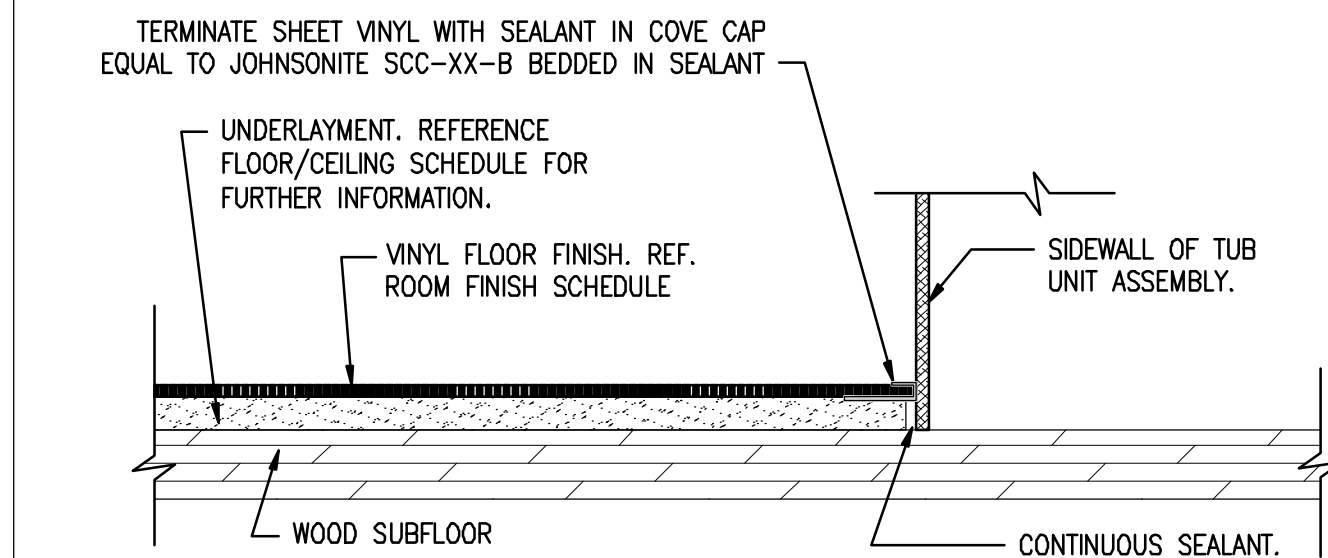
BATHROOM ENTRANCE SHOWER AT CONCRETE SUBFLOOR



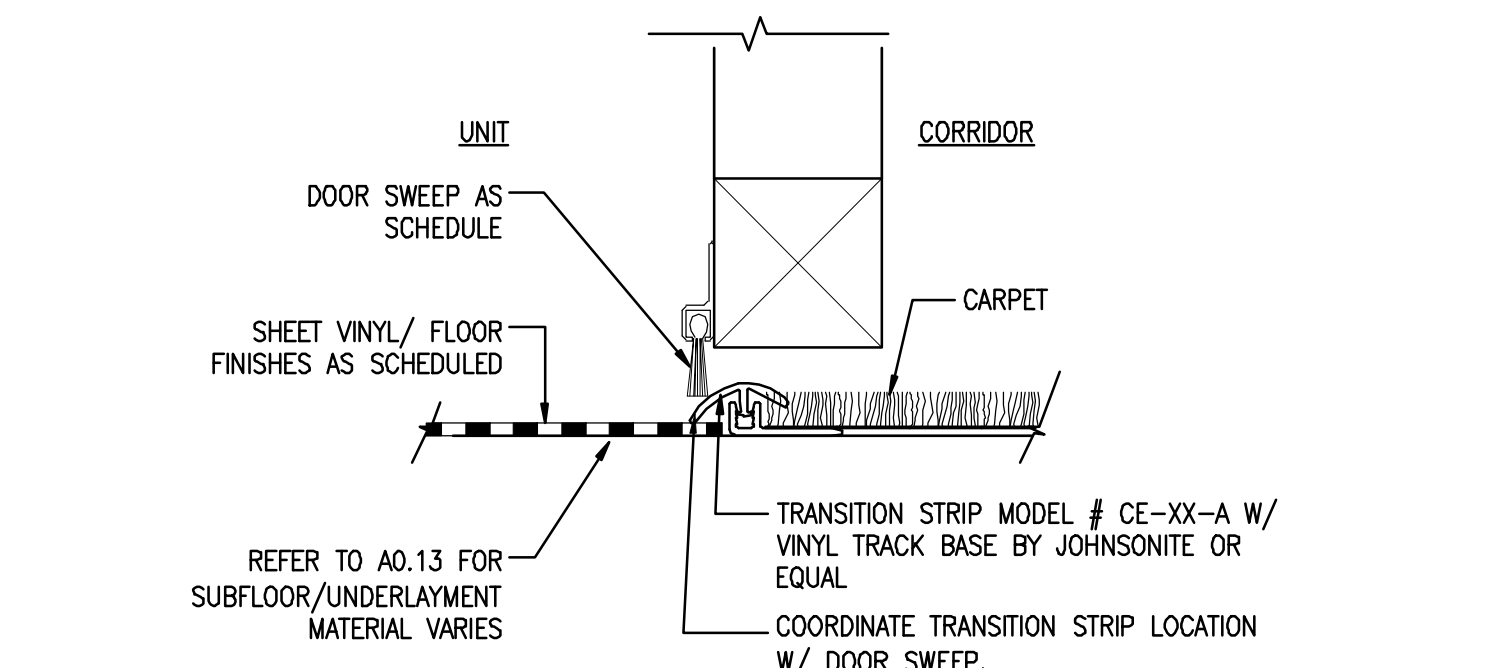
6 **TUB/SHOWER AT UNIT DEMISING WALL**
 REFERENCED FROM: SCALE: 3" = 1'-0"



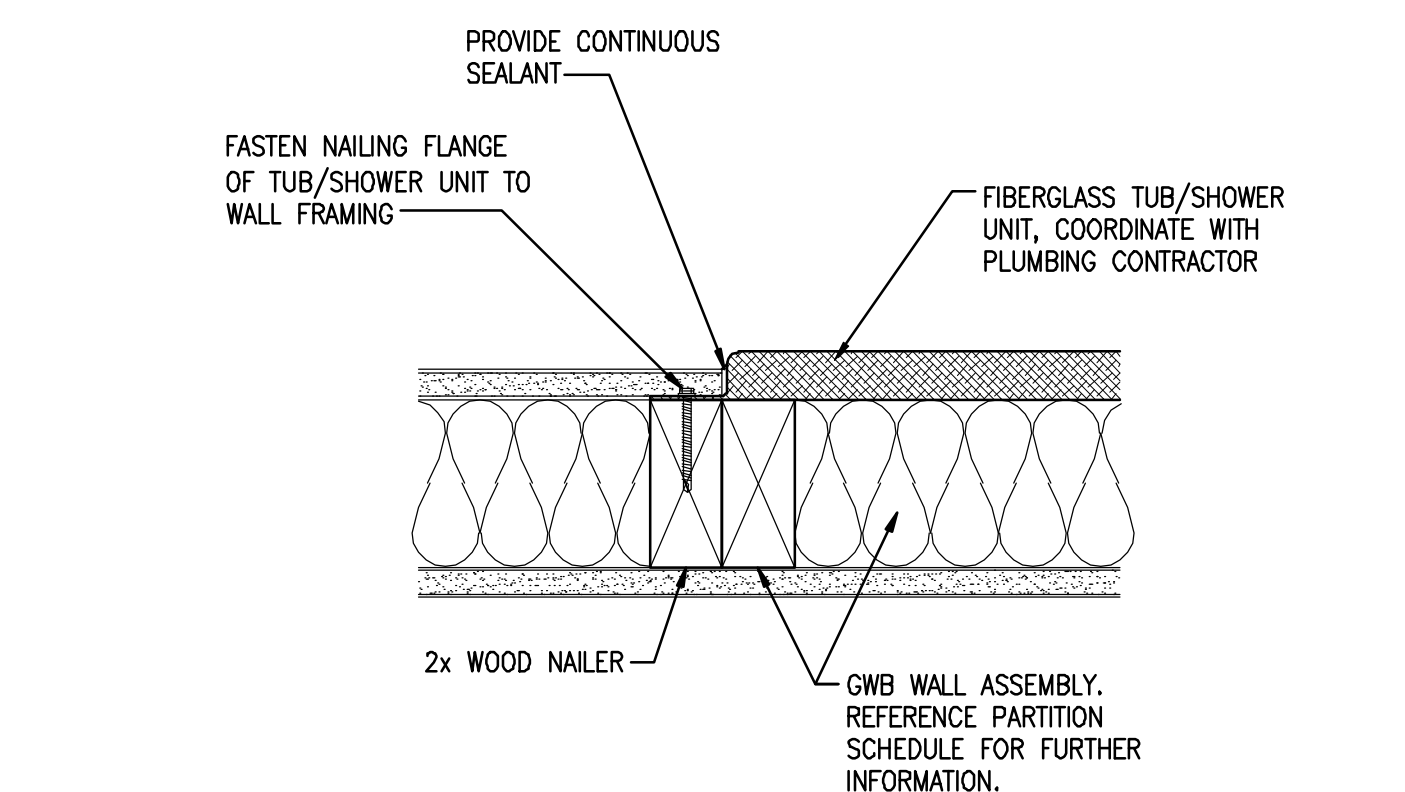
7 **DETAIL @ FRP PANEL**
 REFERENCED FROM: SCALE: 3" = 1'-0"



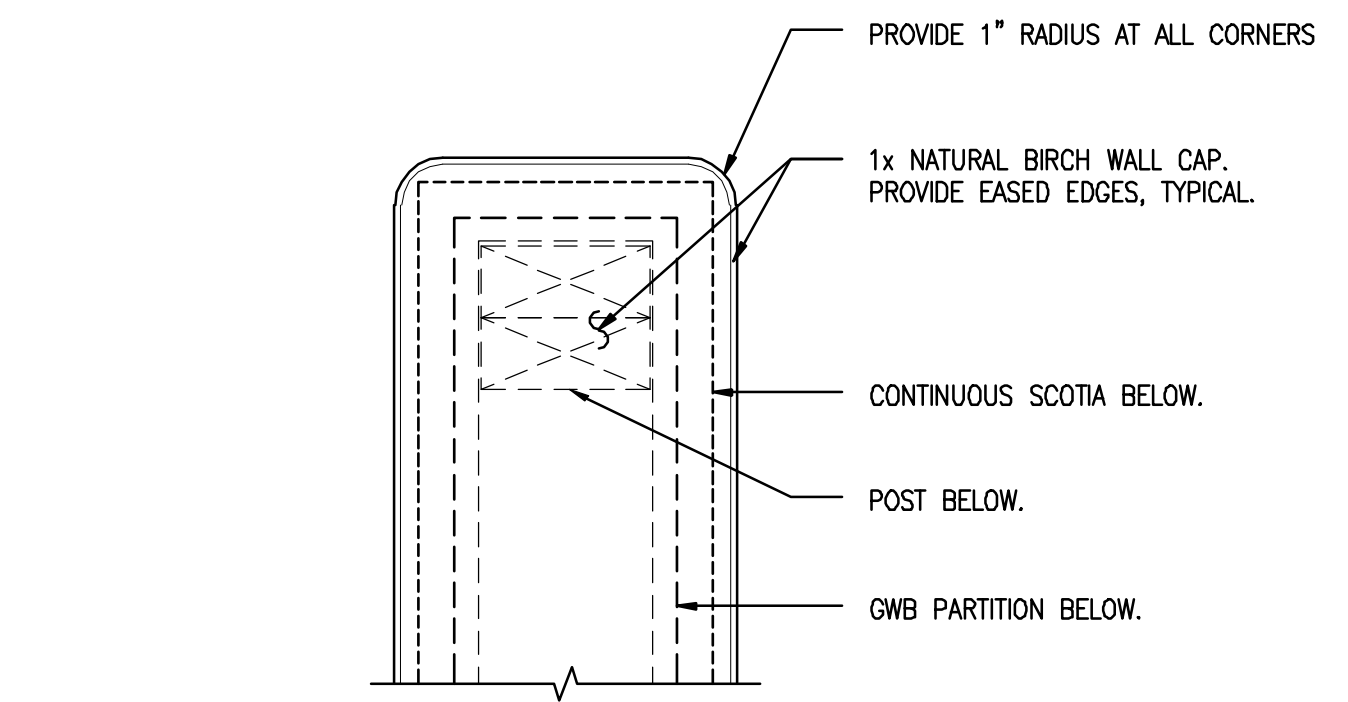
8 **SHEET VINYL TERMINATION AT TUB**
 REFERENCED FROM: SCALE: 6" = 1'-0"



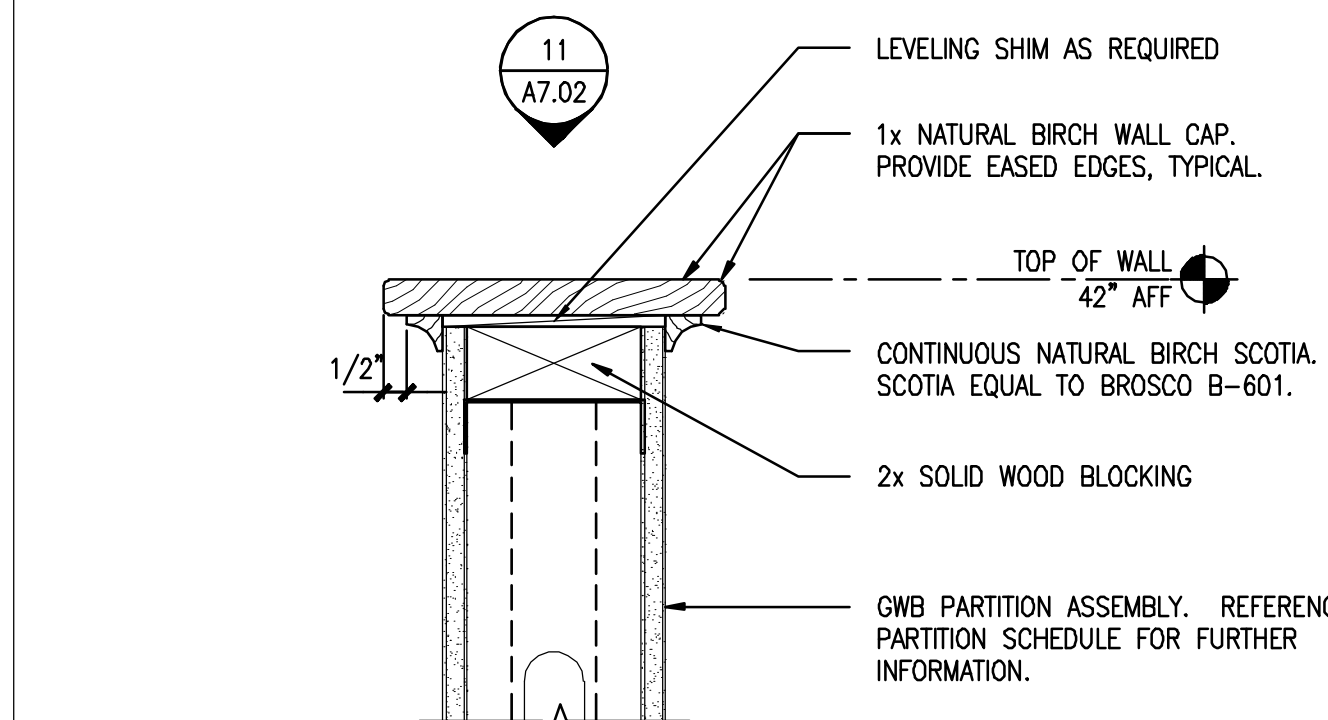
9 **THRESHOLD DETAIL @ UNIT ENTRY DOOR**
 REFERENCED FROM: SCALE: 6" = 1'-0"



10 **DETAIL @ TUB/SHOWER AT PARTITION WALL**
 REFERENCED FROM: SCALE: 3" = 1'-0"



11 **PLAN DETAIL @ HALF WALL**
 REFERENCED FROM: A1.44 SCALE: 3" = 1'-0"



12 **CAP DETAIL @ HALF WALL**
 REFERENCED FROM: A1.44 SCALE: 3" = 1'-0"



CWS Architects

Architecture
 Space Planning
 Value Design

434 Cumberland Avenue
 Portland, ME 04101
 Phone: (207) 774-4441
 Fax: (207) 774-4016

www.CWSArch.com



Owner:

SOUTHERN MAINE STUDENT HOUSING LLC
 247 COMMERCIAL STREET
 ROCKPORT, MAINE 04856
 TEL: (207) 236-4067

Contractor:

PIZZAGALLI CONSTRUCTION
 131 PRESUMPSCOT STREET
 PORTLAND, ME 04103
 TEL: (207) 874-2323
 FAX: (207) 874-2727

BAYSIDE VILLAGE - A STUDENT HOUSING COMPLEX

132 MARGINAL WAY
 PORTLAND, MAINE

Project No: 2006-432/BVP

Drawing Title:
MISC DETAILS

Scale: AS NOTED
 Date: SEPTEMBER 14, 2007

Revisions:

- △
- △
- △
- △
- △
- △

Drawing Number:

A7.02