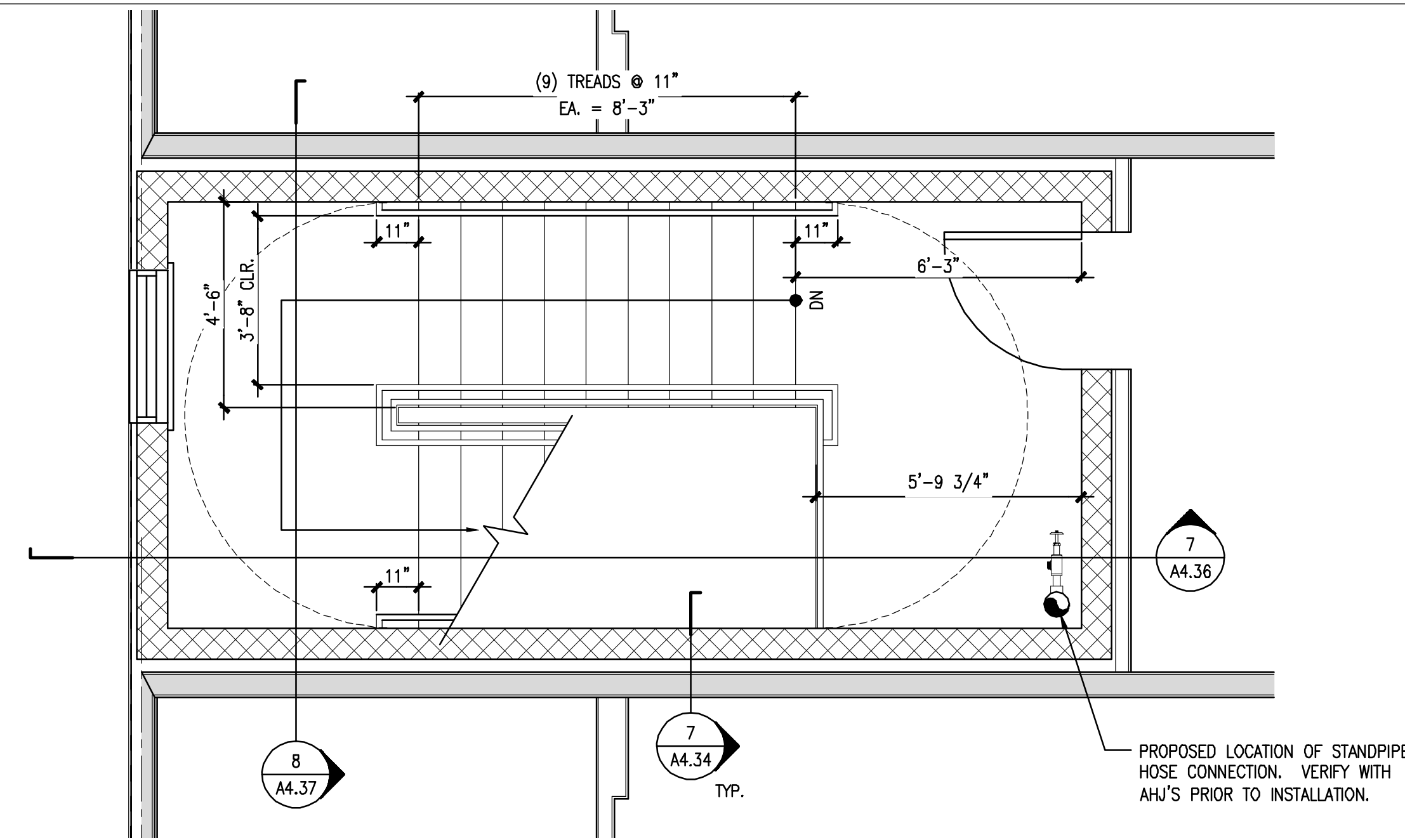


1 ENLARGED STAIR TOWER #2 PLAN @ FIRST FLOOR

REFERENCED FROM:

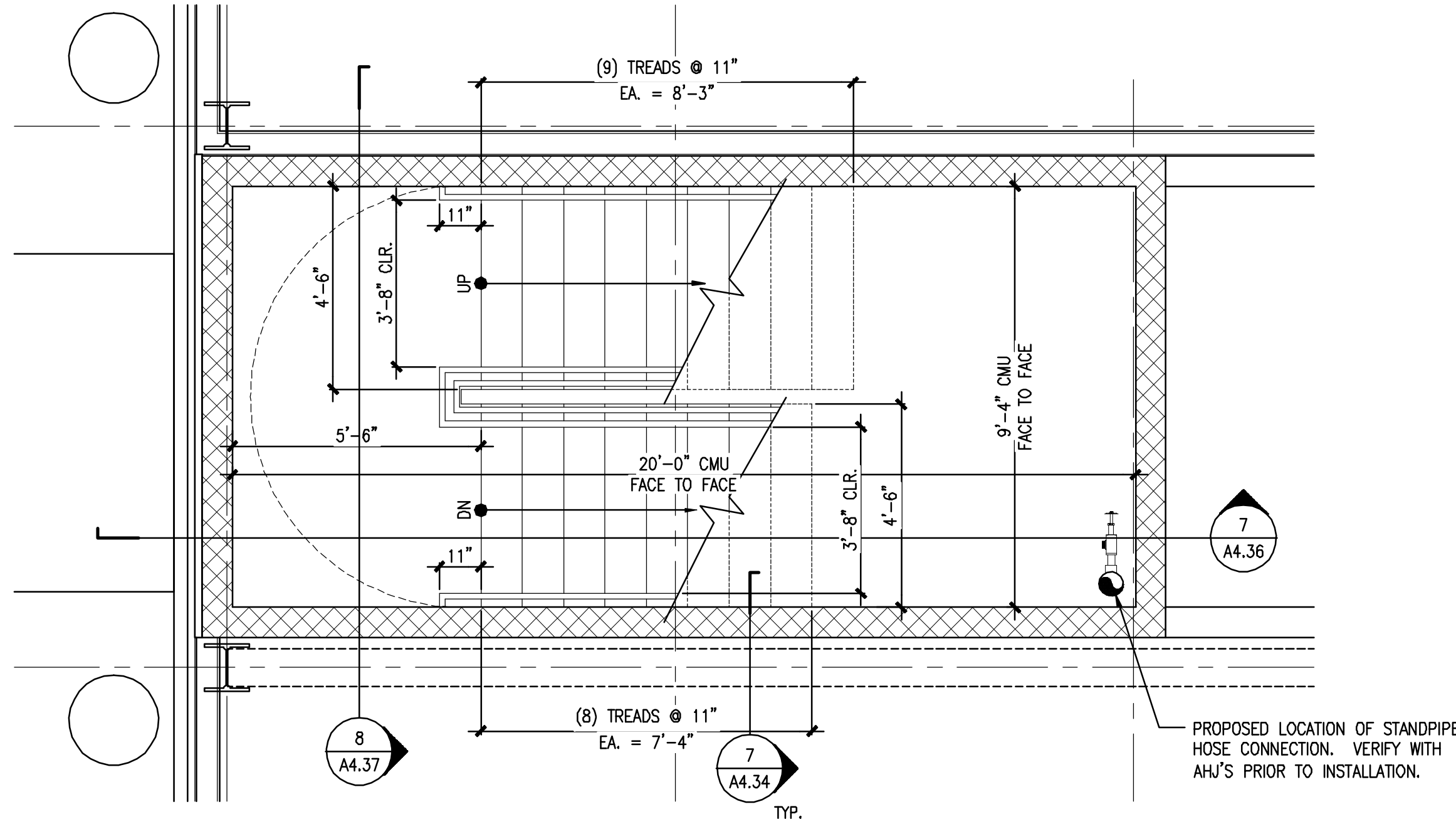
SCALE: 3/8" = 1'-0"



3 ENLARGED STAIR TOWER #2 PLAN @ FOURTH FLOOR

REFERENCED FROM:

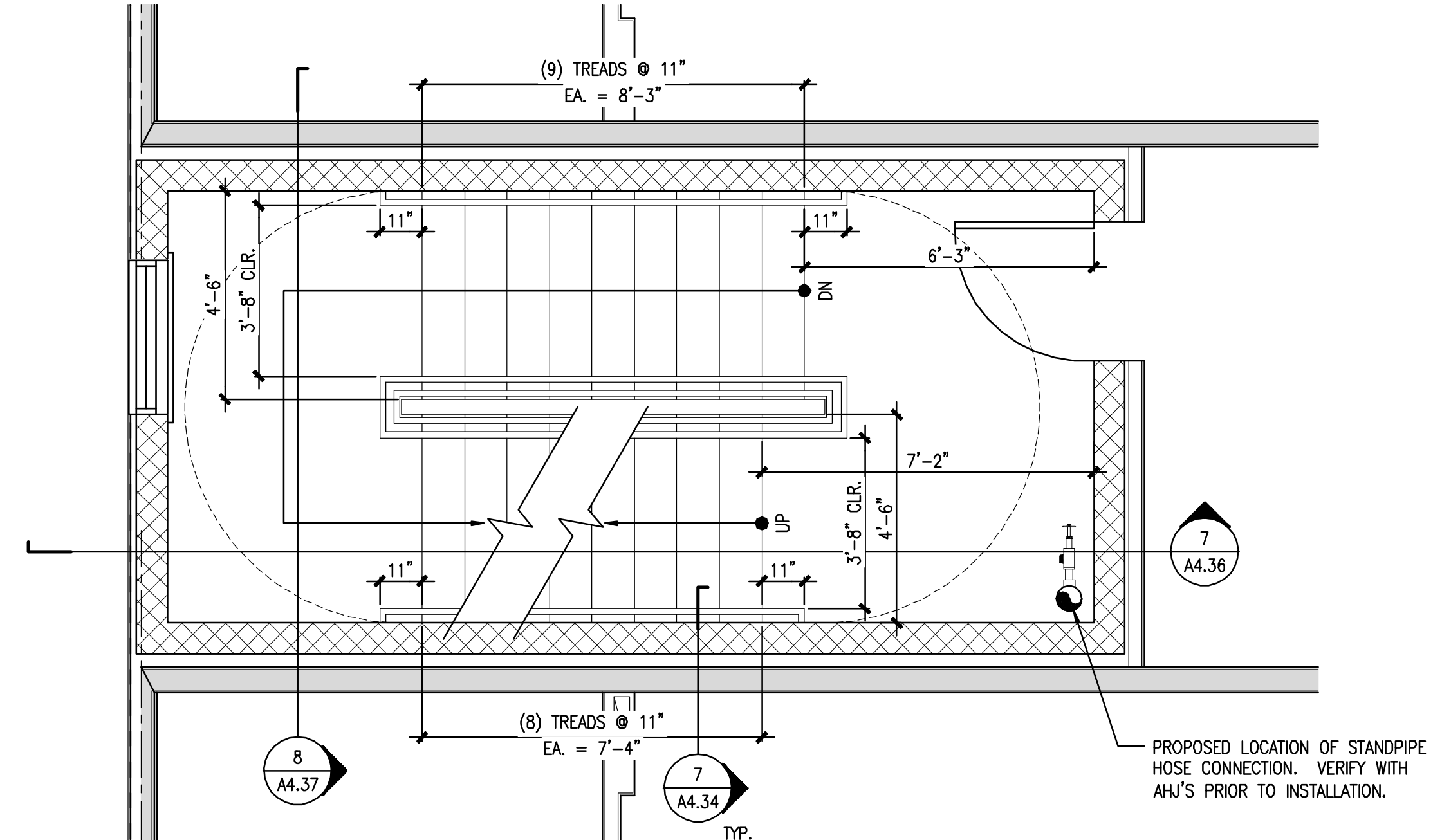
SCALE: 3/8" = 1'-0"



5 ENLARGED STAIR TOWER #2 PLAN @ INTERMEDIATE LANDING

REFERENCED FROM:

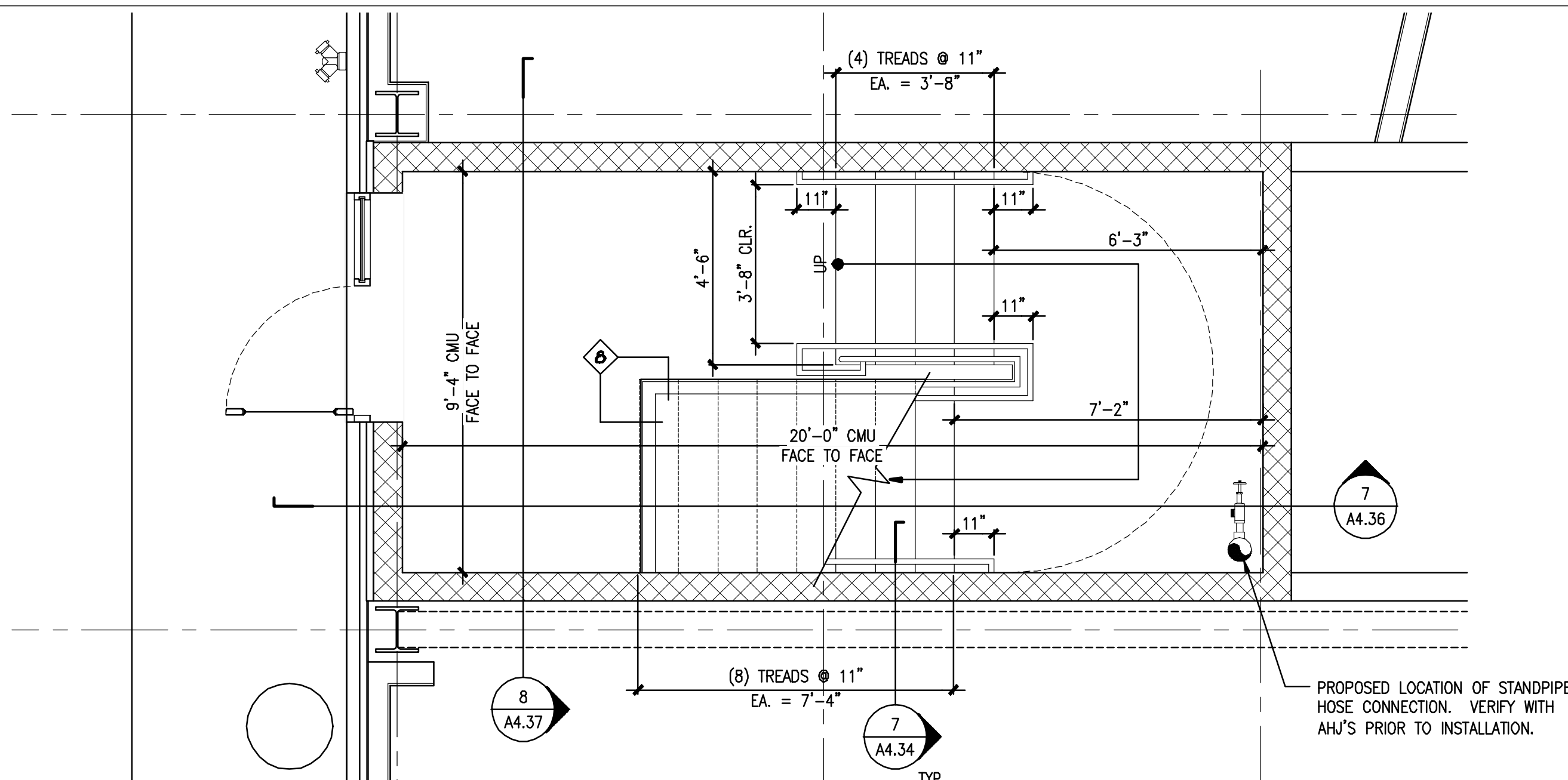
SCALE: 3/8" = 1'-0"



7 ENLARGED STAIR TOWER #2 PLAN @ THIRD FLOOR

REFERENCED FROM:

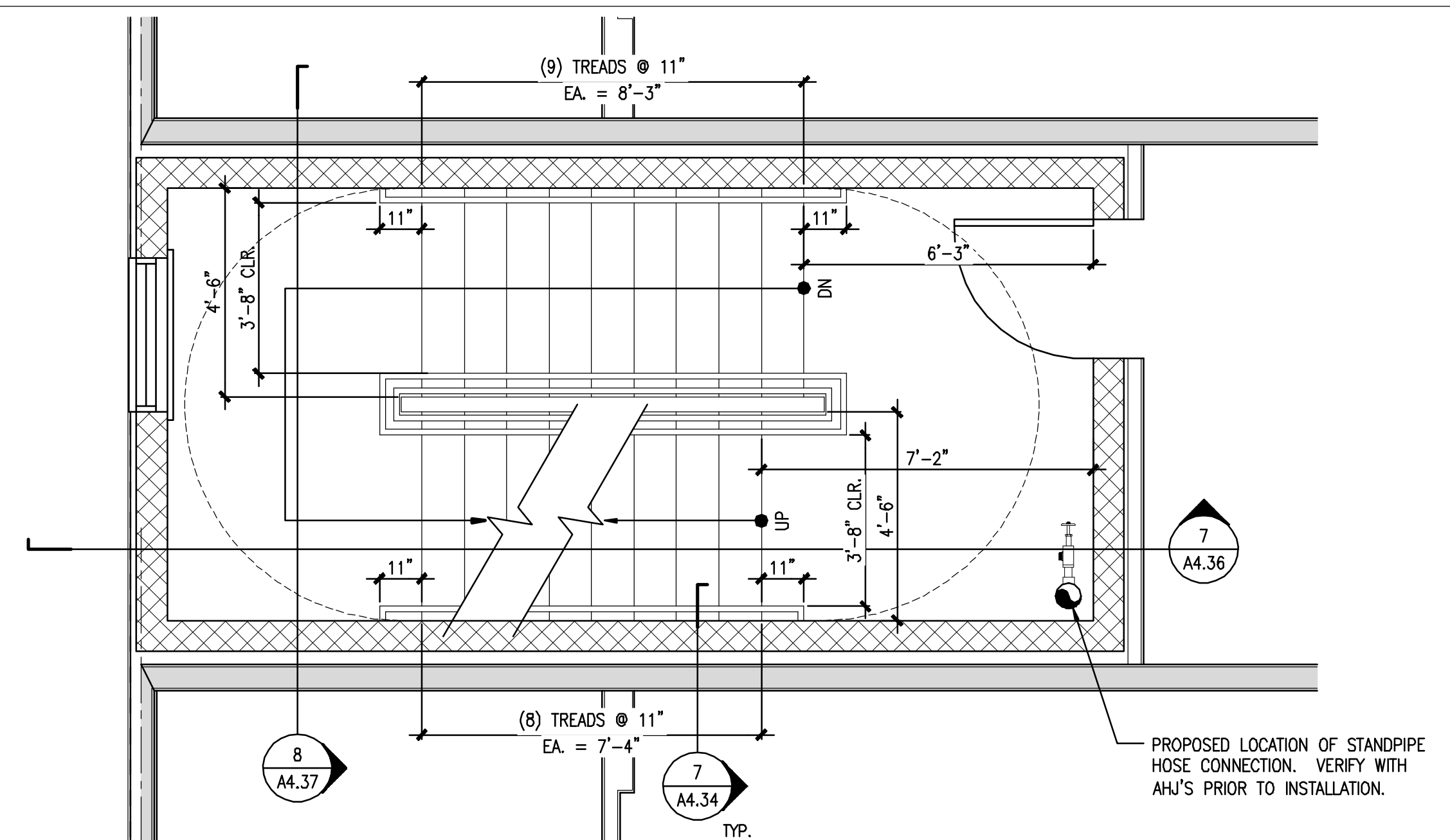
SCALE: 3/8" = 1'-0"



9 ENLARGED STAIR TOWER #2 PLAN @ LOWER LEVEL

REFERENCED FROM:

SCALE: 3/8" = 1'-0"



11 ENLARGED STAIR TOWER #2 PLAN @ SECOND FLOOR

REFERENCED FROM:

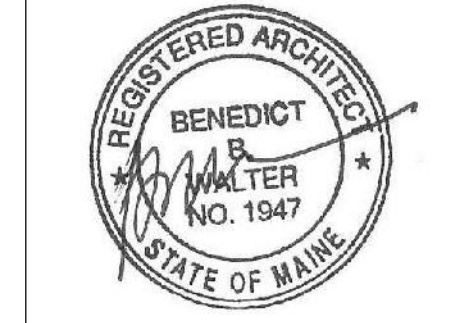
SCALE: 3/8" = 1'-0"



CWS Architects

Architecture
Space Planning
Value Design

434 Cumberland Avenue
Portland, ME 04101
Phone: (207) 774-4441
Fax: (207) 774-4016
www.CWSArch.com



Owner:
SOUTHERN MAINE STUDENT HOUSING LLC
247 COMMERCIAL STREET
ROCKPORT, MAINE 04856
TEL: (207) 236-4067

Contractor:
PIZZAGALLI CONSTRUCTION
131 PRESUMPSCOT STREET
PORTLAND, ME 04103
TEL: (207) 874-2323
FAX: (207) 874-2727

BAYSIDE VILLAGE - A STUDENT HOUSING COMPLEX

132 MARGINAL WAY
PORTLAND, MAINE

Project No: 2006-432/BVP

Drawing Title:
ENLARGED PLANS AT STAIR TOWER #2

Scale: 3/8" = 1'-0"
Date: SEPTEMBER 14, 2007

- Revisions:
- △
 - △
 - △
 - △
 - △

Drawing Number:

A4.35