

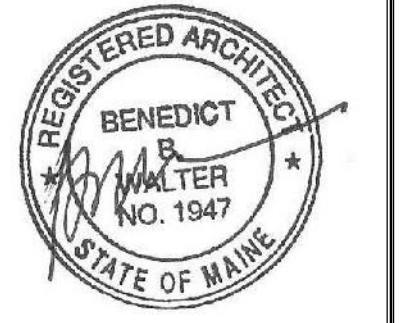


CWS Architects

Architecture  
Space Planning  
Value Design

434 Cumberland Avenue  
Portland, ME 04101  
Phone: (207) 774-4441  
Fax: (207) 774-4016

www.CWSArch.com



Owner:  
**SOUTHERN MAINE STUDENT HOUSING LLC**  
247 COMMERCIAL STREET  
ROCKPORT, MAINE 04856  
TEL: (207) 236-4067

Contractor:  
**PIZZAGALLI CONSTRUCTION**  
131 PRESUMPCOT STREET  
PORTLAND, ME 04103  
TEL: (207) 874-2323  
FAX: (207) 874-2727

**BAYSIDE VILLAGE - A STUDENT HOUSING COMPLEX**

132 MARGINAL WAY  
PORTLAND, MAINE

Project No: 2006-432/BVP

Drawing Title:  
**ENLARGED PLANS AT STAIR TOWER #1**

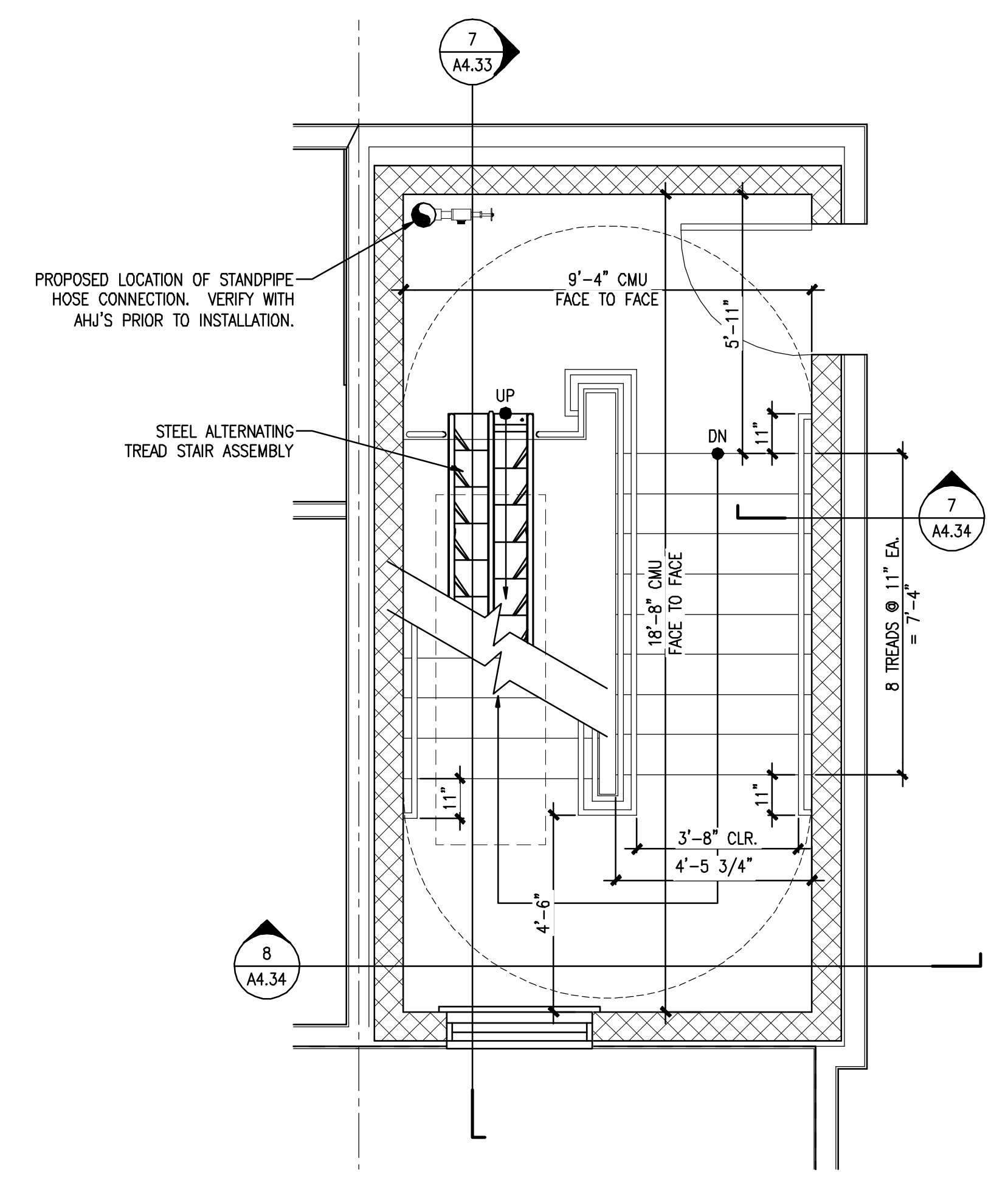
Scale: 3/8" = 1'-0"  
Date: SEPTEMBER 14, 2007

- Revisions:
- △
  - △
  - △
  - △
  - △
  - △

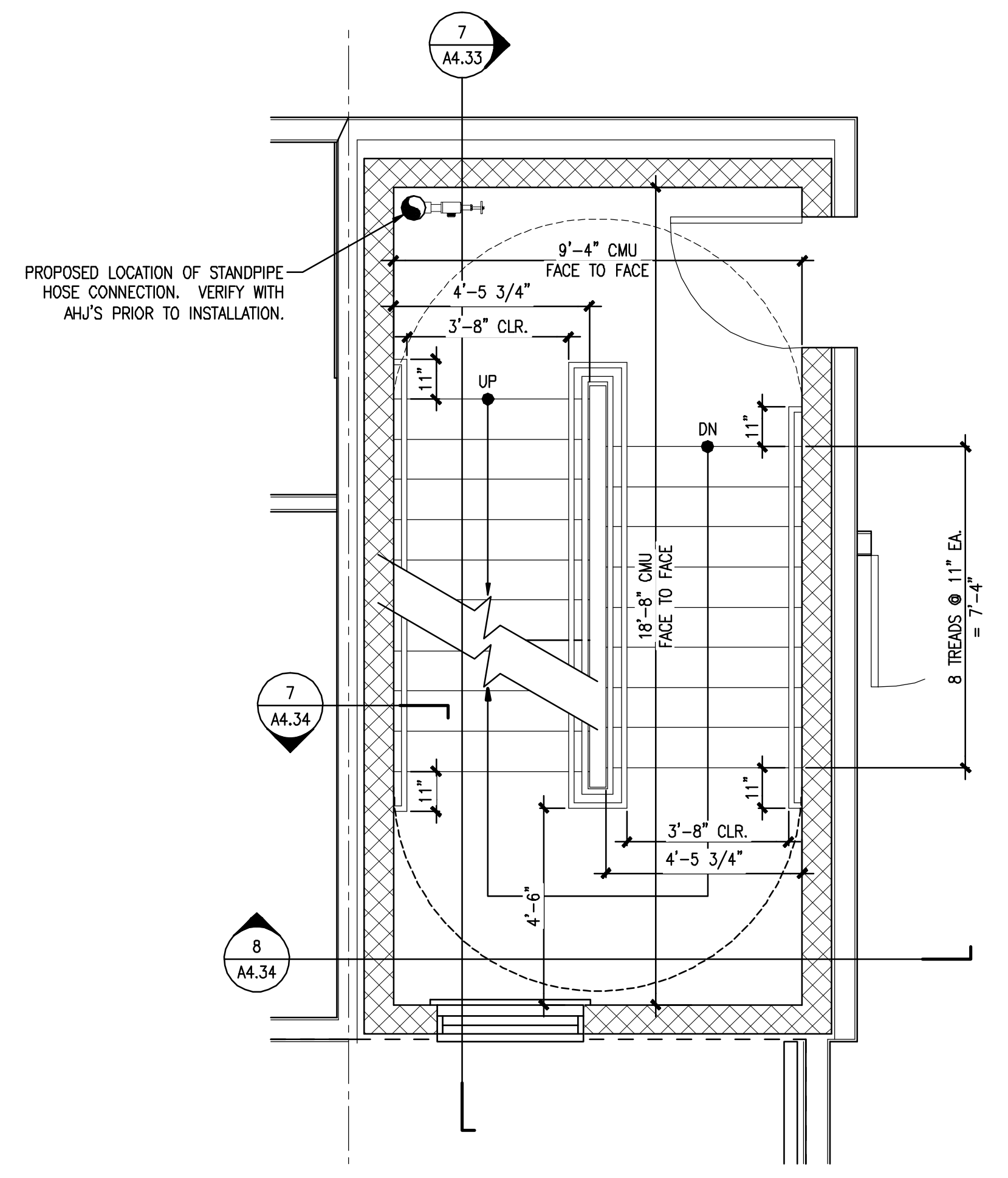
Drawing Number:

**A4.32**

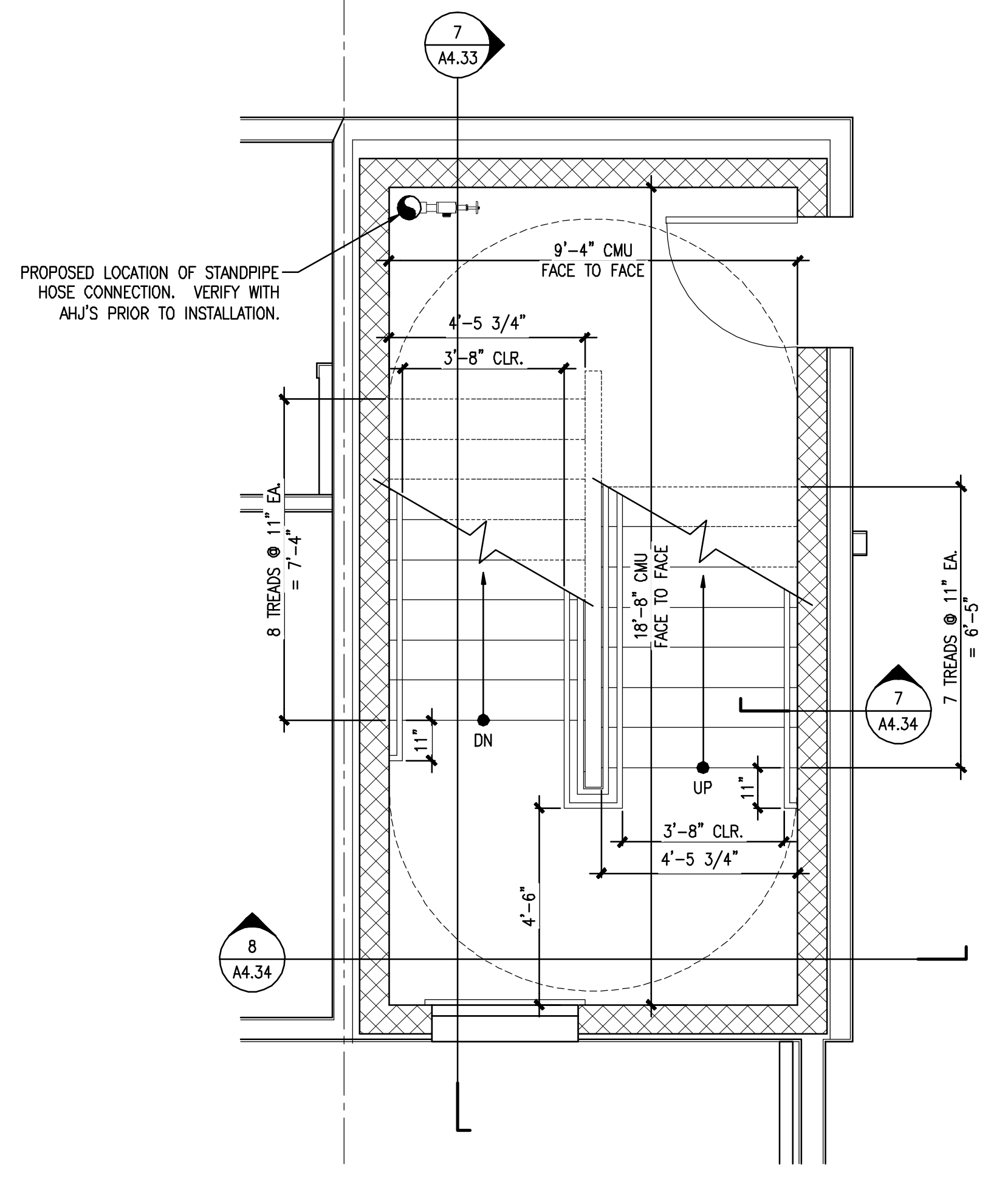
ISSUED FOR CONSTRUCTION



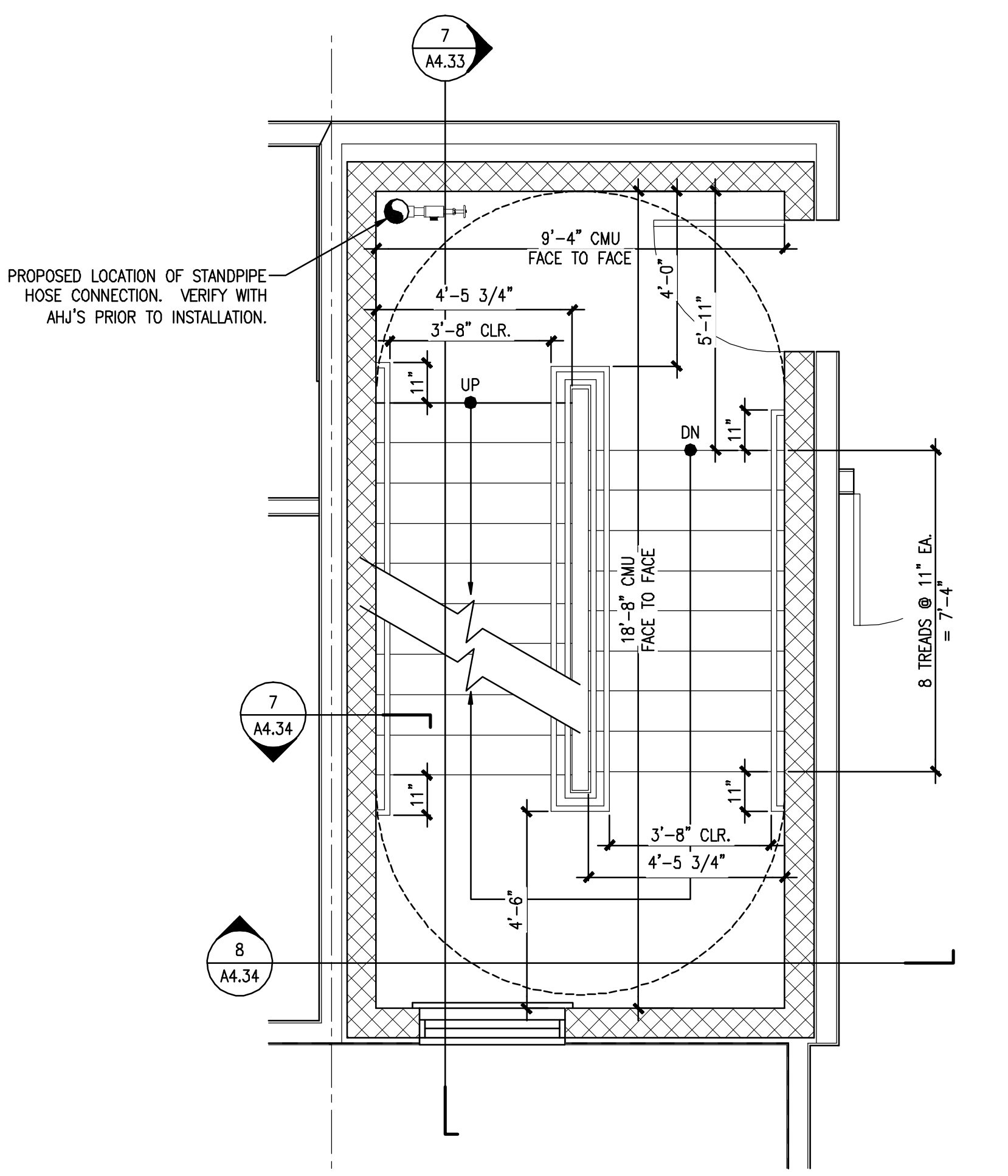
**6 ENLARGED STAIR TOWER #1 PLAN @ FOURTH FLOOR**  
 REFERENCED FROM: SCALE: 3/8" = 1'-0"



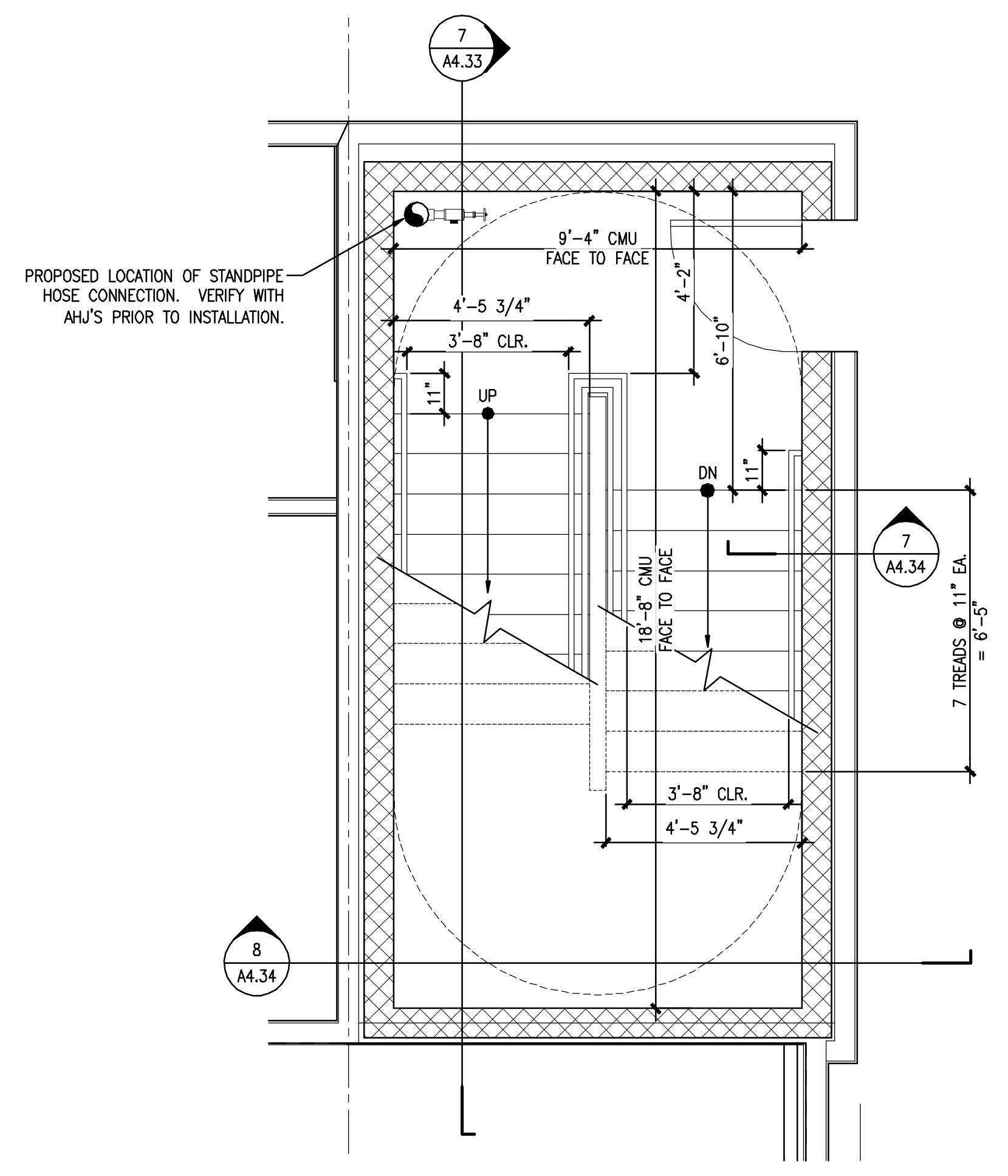
**5 ENLARGED STAIR TOWER #1 PLAN @ SECOND FLOOR**  
 REFERENCED FROM: SCALE: 3/8" = 1'-0"



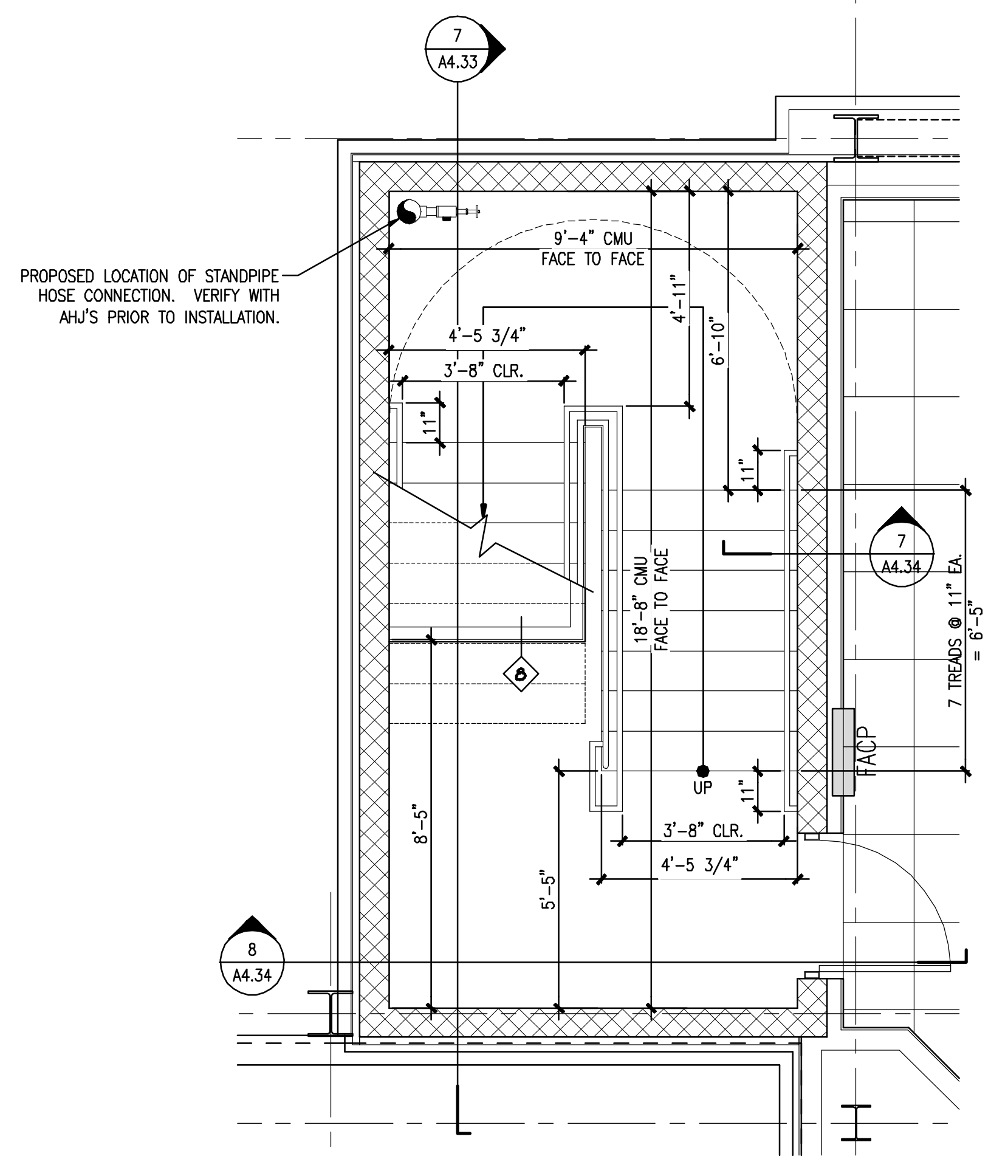
**4 ENLARGED STAIR TOWER #1 PLAN @ INTERMEDIATE LANDING**  
 REFERENCED FROM: SCALE: 3/8" = 1'-0"



**12 ENLARGED STAIR TOWER #1 PLAN @ THIRD FLOOR**  
 REFERENCED FROM: SCALE: 3/8" = 1'-0"



**11 ENLARGED STAIR TOWER #1 PLAN @ FIRST FLOOR**  
 REFERENCED FROM: SCALE: 3/8" = 1'-0"



**10 ENLARGED STAIR TOWER #1 PLAN @ LOWER LEVEL**  
 REFERENCED FROM: SCALE: 3/8" = 1'-0"