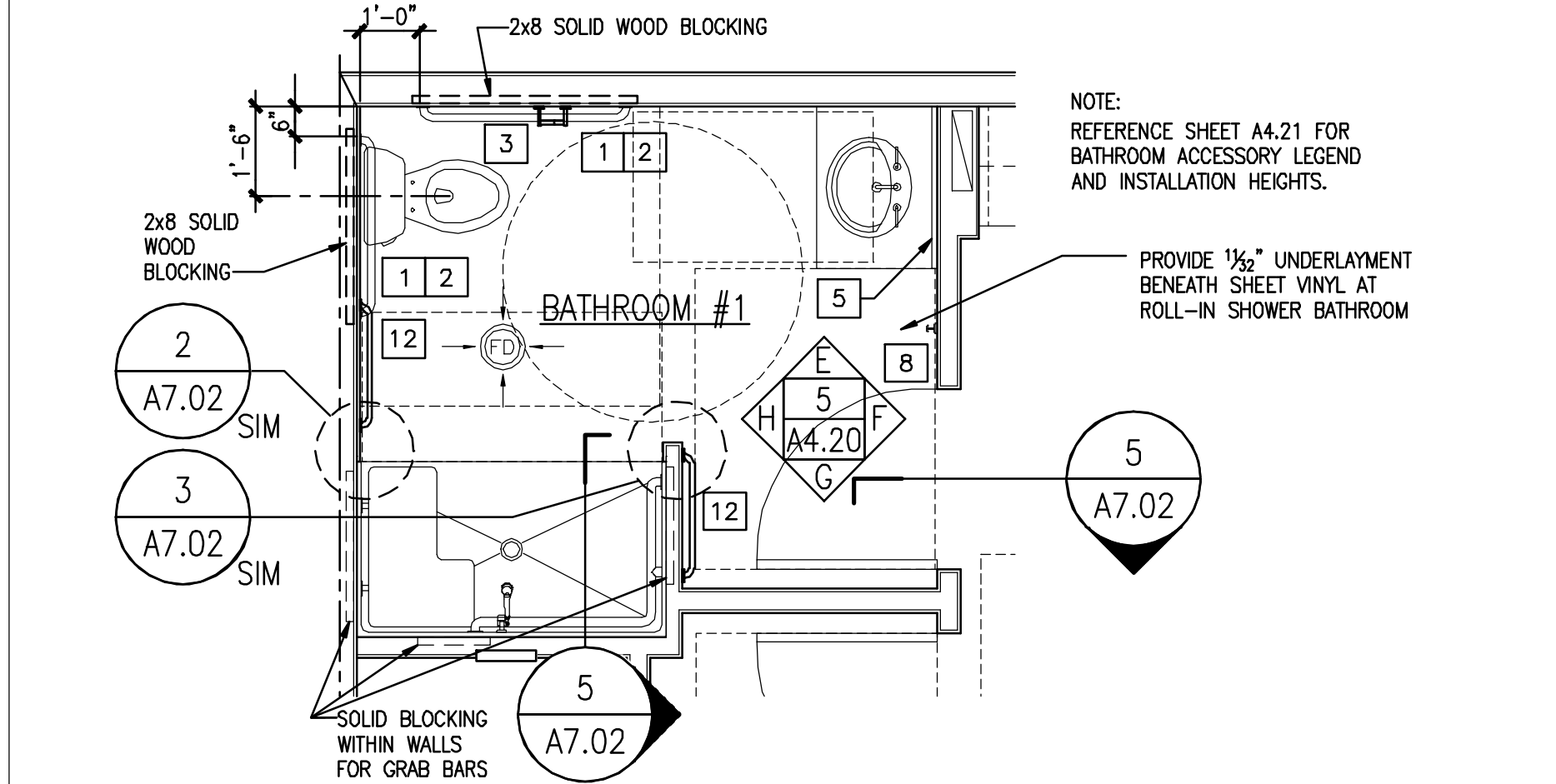
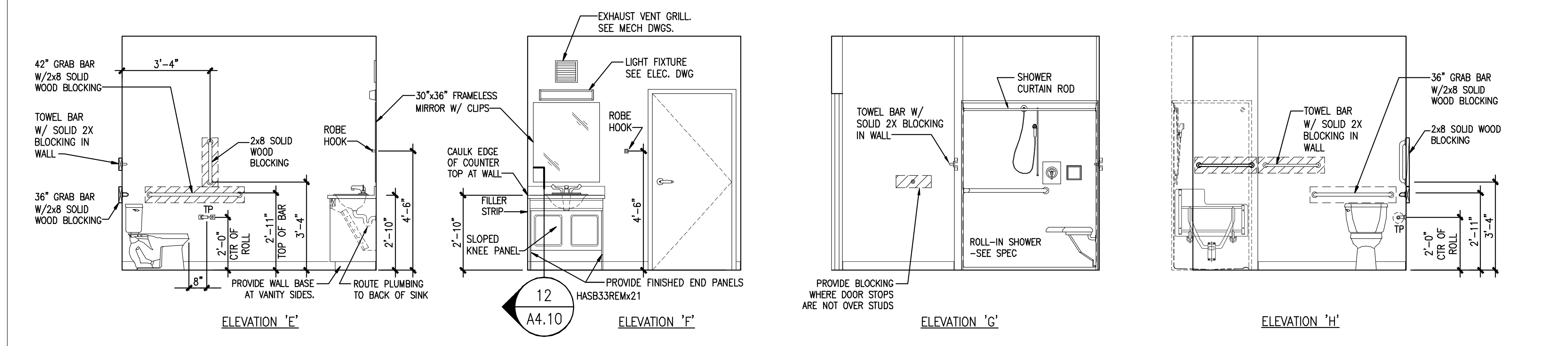


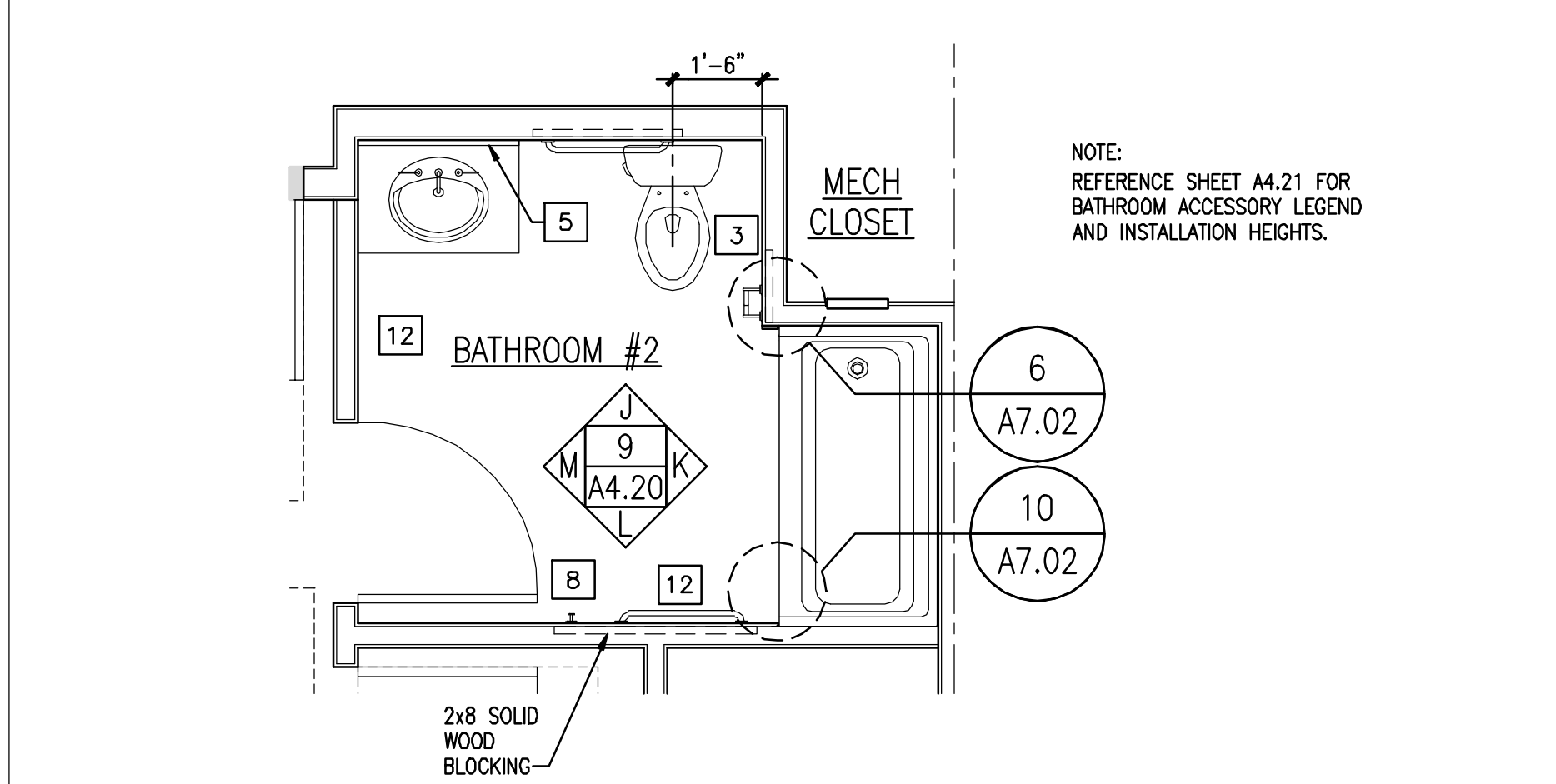
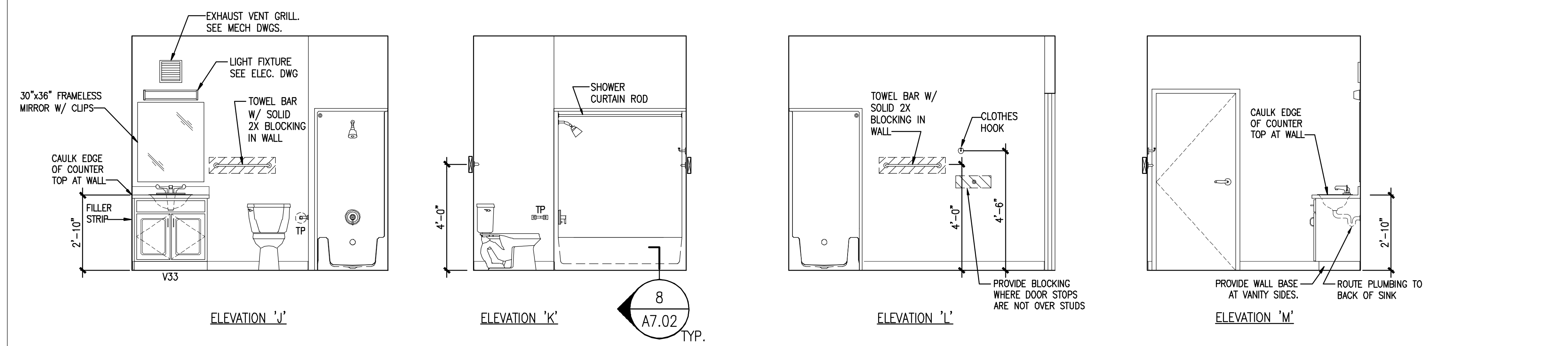
**1** INTERIOR ELEVATIONS FOR BATHROOM #1 IN UNIT #1  
 REFERENCED FROM: SCALE: 3/8"=1'-0"

**4** PLAN OF BATHROOM #1 IN UNIT #1  
 REFERENCED FROM: SCALE: 3/8"=1'-0"



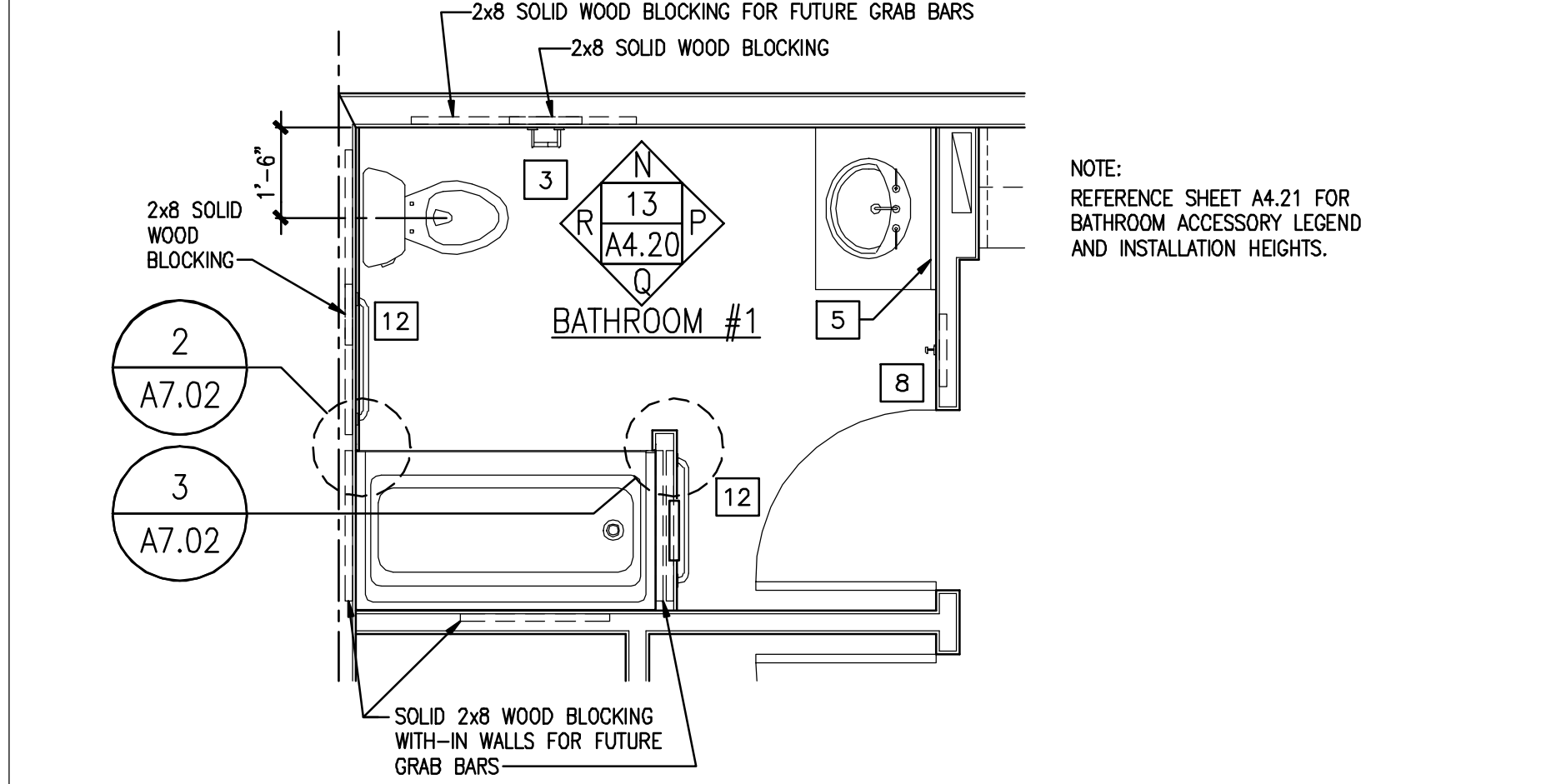
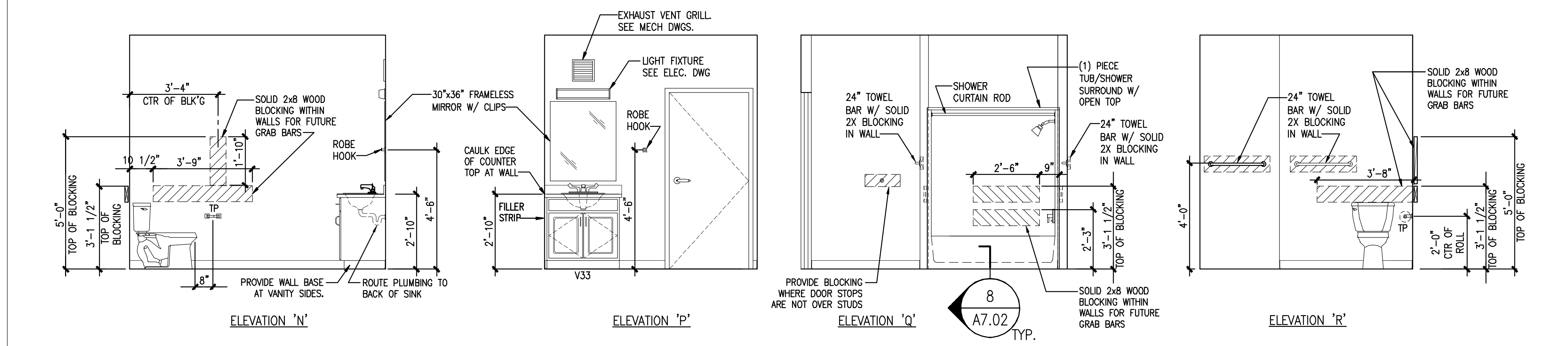
**5** INTERIOR ELEVATIONS FOR BATHROOM #1 IN UNIT #4  
 REFERENCED FROM: SCALE: 3/8"=1'-0"

**8** PLAN OF BATHROOM #1 IN UNIT #4  
 REFERENCED FROM: SCALE: 3/8"=1'-0"



**9** INTERIOR ELEVATIONS FOR BATHROOM #2 IN UNITS #1, #2, #3, #4, #5, #6, & #7  
 REFERENCED FROM: SCALE: 3/8"=1'-0"

**12** PLAN OF BATHROOM #2 IN UNITS #1, #2, #3, #4, #5, #6, & #7  
 REFERENCED FROM: SCALE: 3/8"=1'-0"



**13** INTERIOR ELEVATIONS FOR BATHROOM #1 IN UNITS #2, #3, #5, #6, & #7  
 REFERENCED FROM: SCALE: 3/8"=1'-0"

**16** PLAN OF BATHROOM #1 IN UNITS #2, #3, #5, #6, & #7  
 REFERENCED FROM: SCALE: 3/8"=1'-0"

**CWS**  
**CWS Architects**  
 Architecture  
 Space Planning  
 Value Design  
 434 Cumberland Avenue  
 Portland, ME 04101  
 Phone: (207) 774-4441  
 Fax: (207) 774-4016  
 www.CWSArch.com

**BENEDICT WALTER**  
 REGISTERED ARCHITECT  
 STATE OF MAINE  
 NO. 1947

Owner: **SOUTHERN MAINE STUDENT HOUSING LLC**  
 247 COMMERCIAL STREET  
 ROCKPORT, MAINE 04856  
 TEL: (207) 236-4067

Contractor: **PIZZAGALLI CONSTRUCTION**  
 131 PRESUMPSCOT STREET  
 PORTLAND, ME 04103  
 TEL: (207) 874-2323  
 FAX: (207) 874-2727

**BAYSIDE VILLAGE - A STUDENT HOUSING COMPLEX**  
 132 MARGINAL WAY  
 PORTLAND, MAINE

Project No: 2006-432/BVP

Drawing Title: **INTERIOR ELEVATIONS UNIT-BATHROOMS**

Scale: AS NOTED  
 Date: SEPTEMBER 14, 2007

Revisions:

Drawing Number: **A4.20**

ISSUED FOR CONSTRUCTION