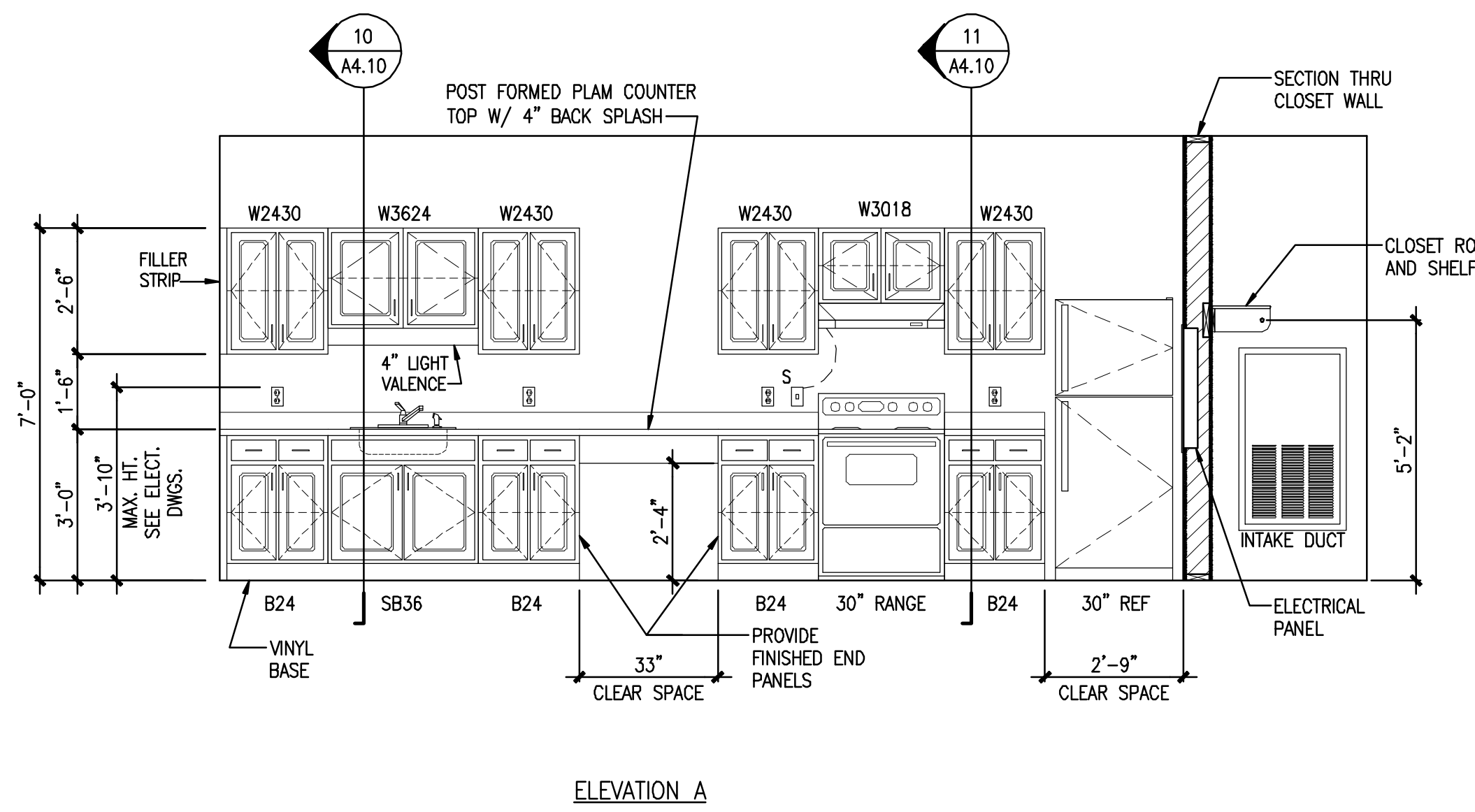


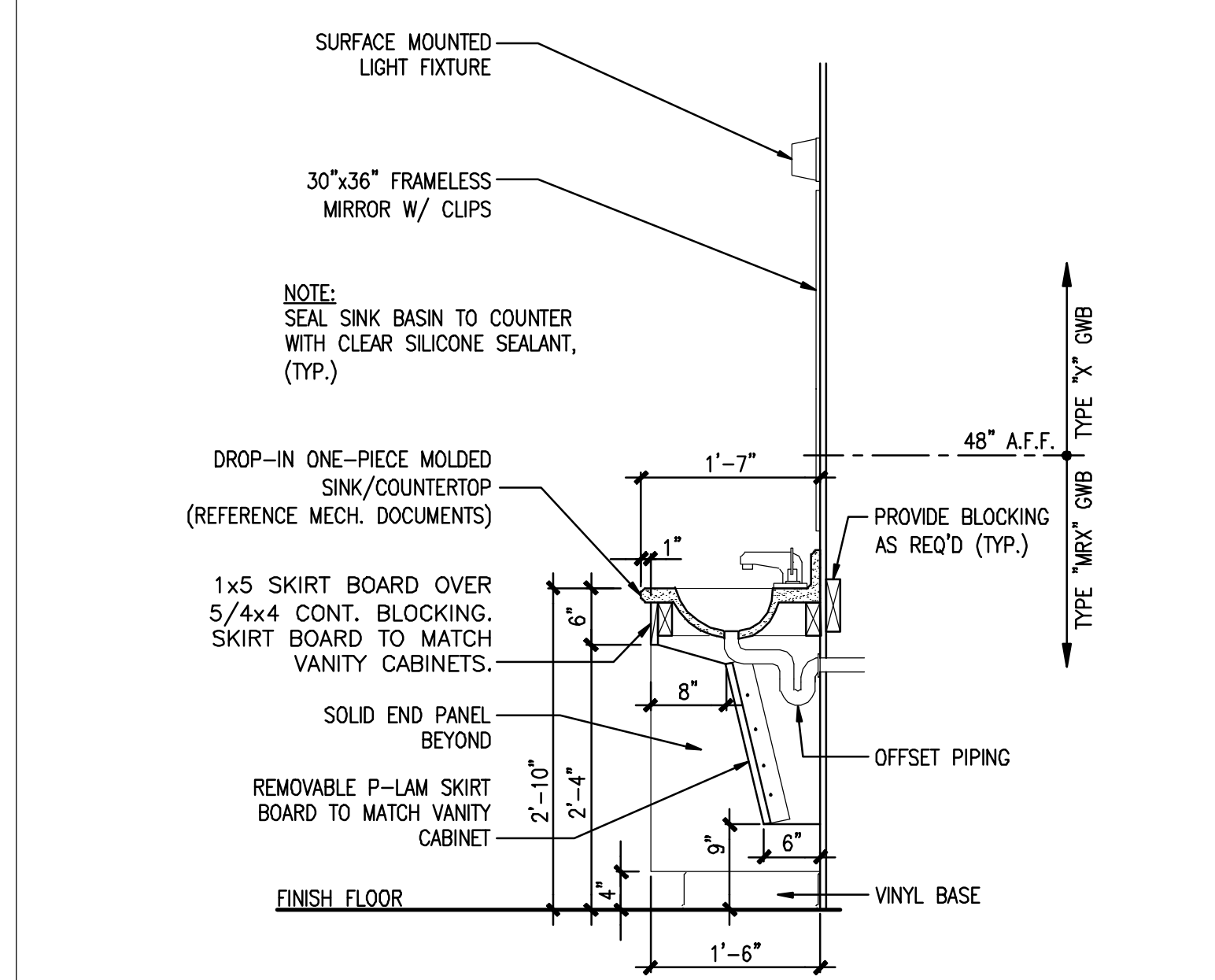
ELEVATION A

**1** INTERIOR ELEVATION FOR KITCHEN IN UNITS 1 & 4  
REFERENCED FROM: SCALE: 3/8" = 1'-0"

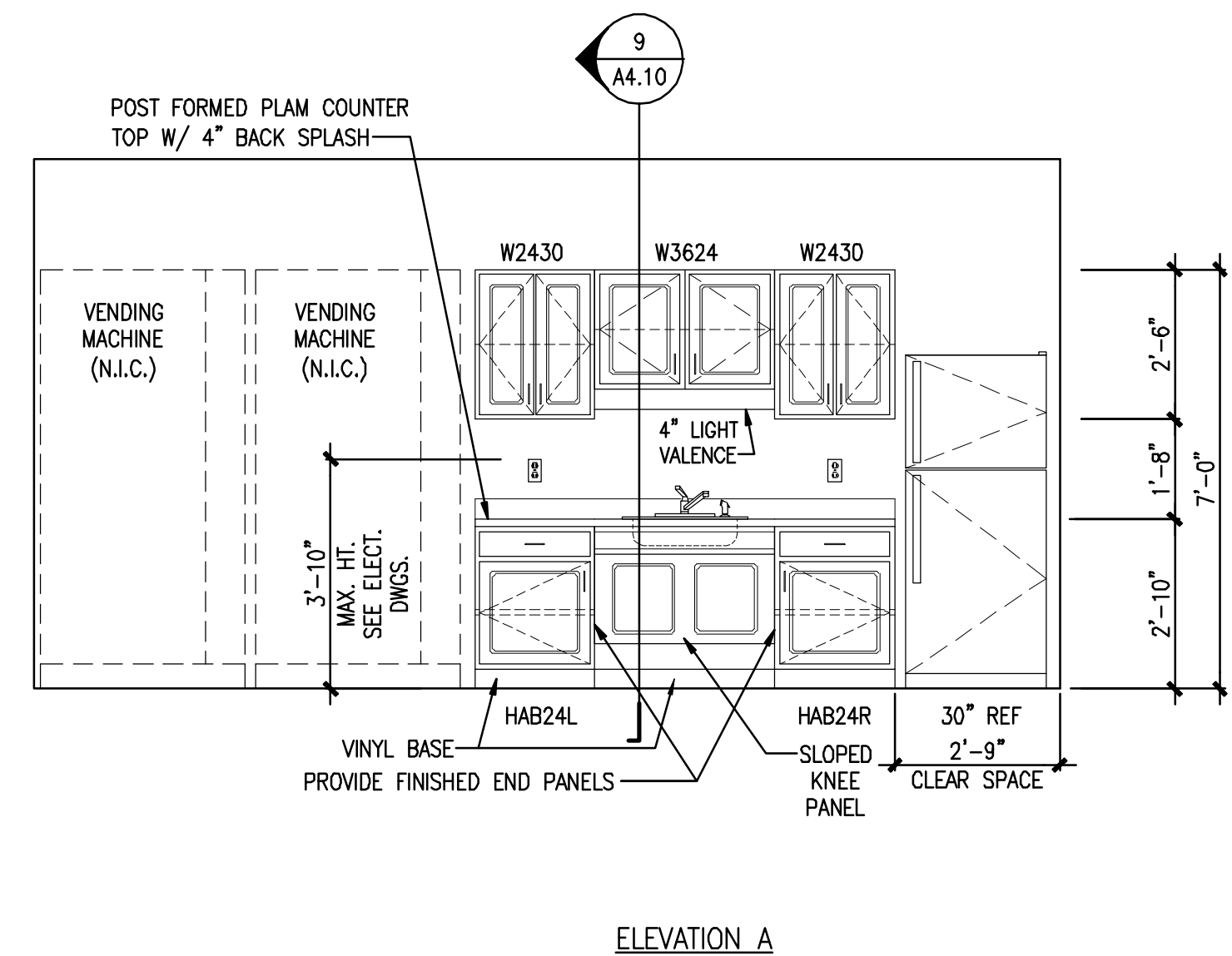


ELEVATION A

**3** INTERIOR ELEVATION FOR KITCHEN IN UNITS 2, 3, 5, 6, & 7  
REFERENCED FROM: SCALE: 3/8" = 1'-0"

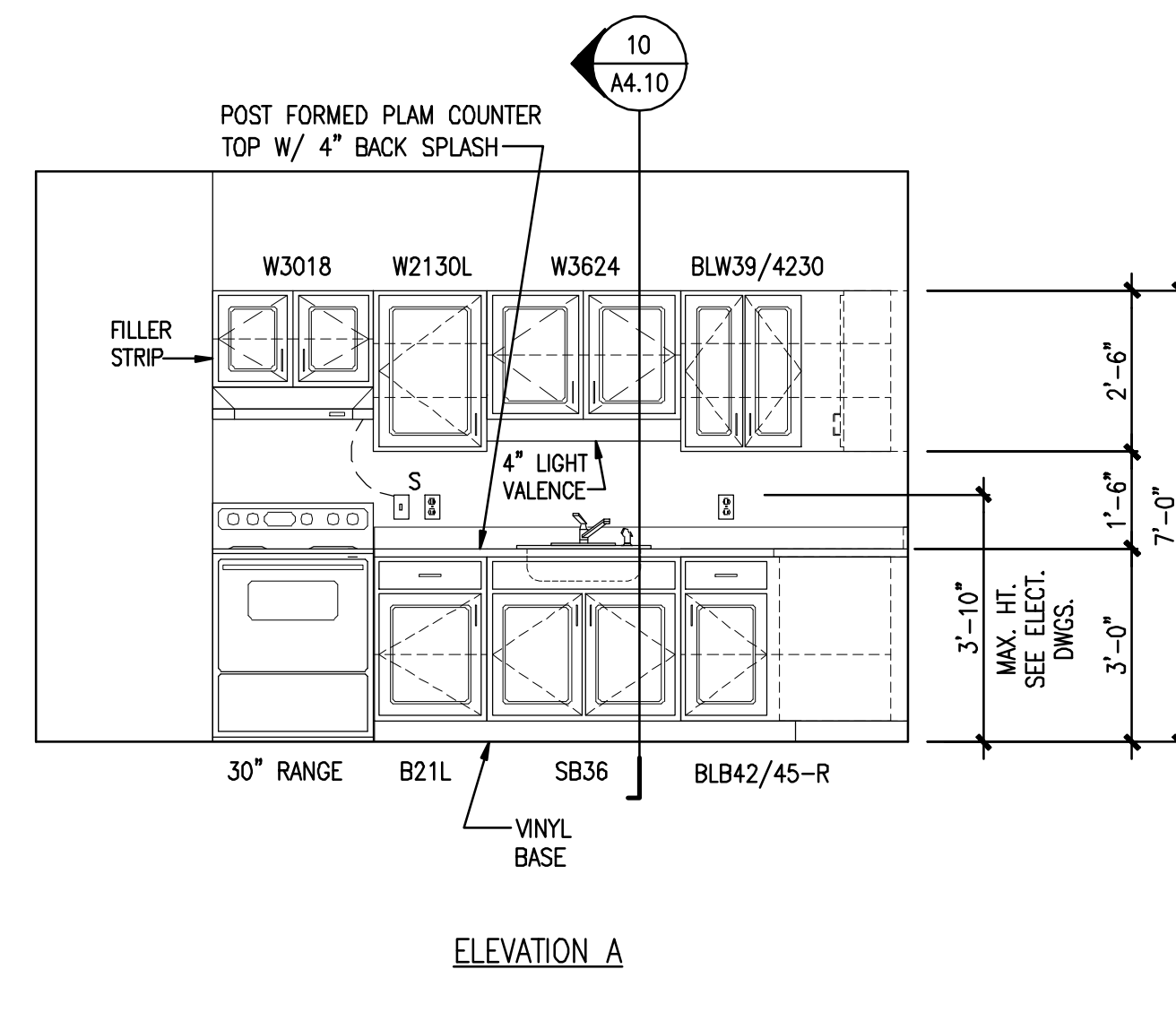


**4** DETAIL @ ACCESSIBLE VANITY  
REFERENCED FROM: SCALE: 3/4" = 1'-0"



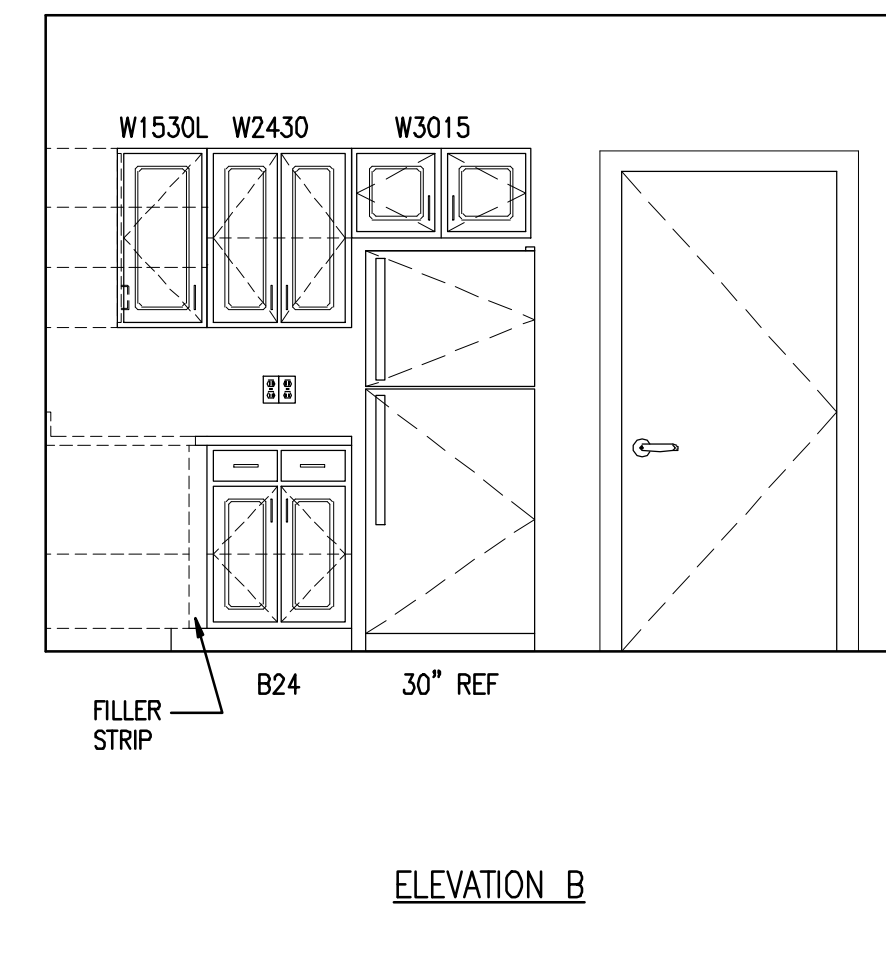
ELEVATION A

**5** INT. KITCHEN ELEV. AT 4TH FLOOR LOUNGE  
REFERENCED FROM: SCALE: 3/8" = 1'-0"

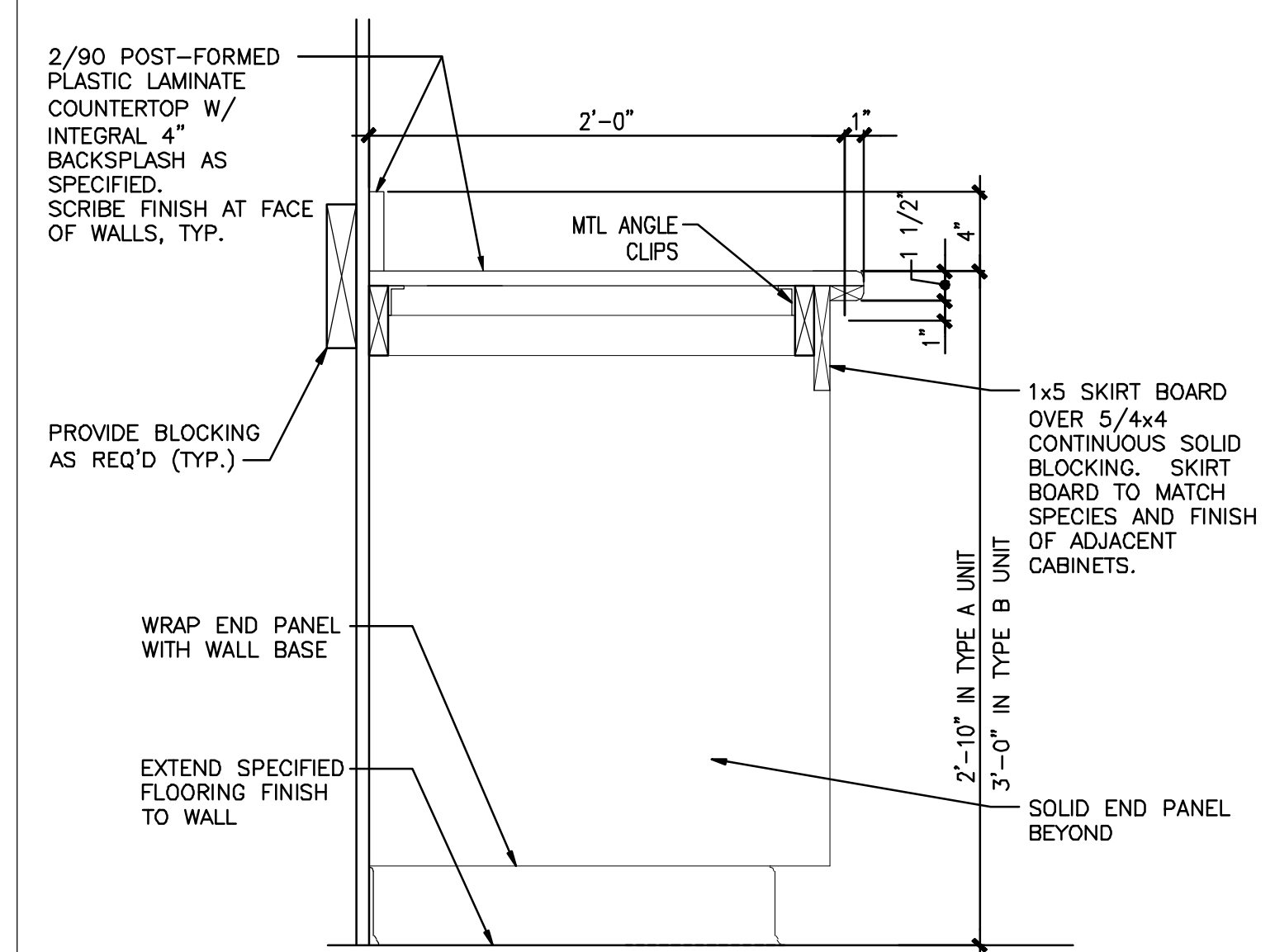


ELEVATION A

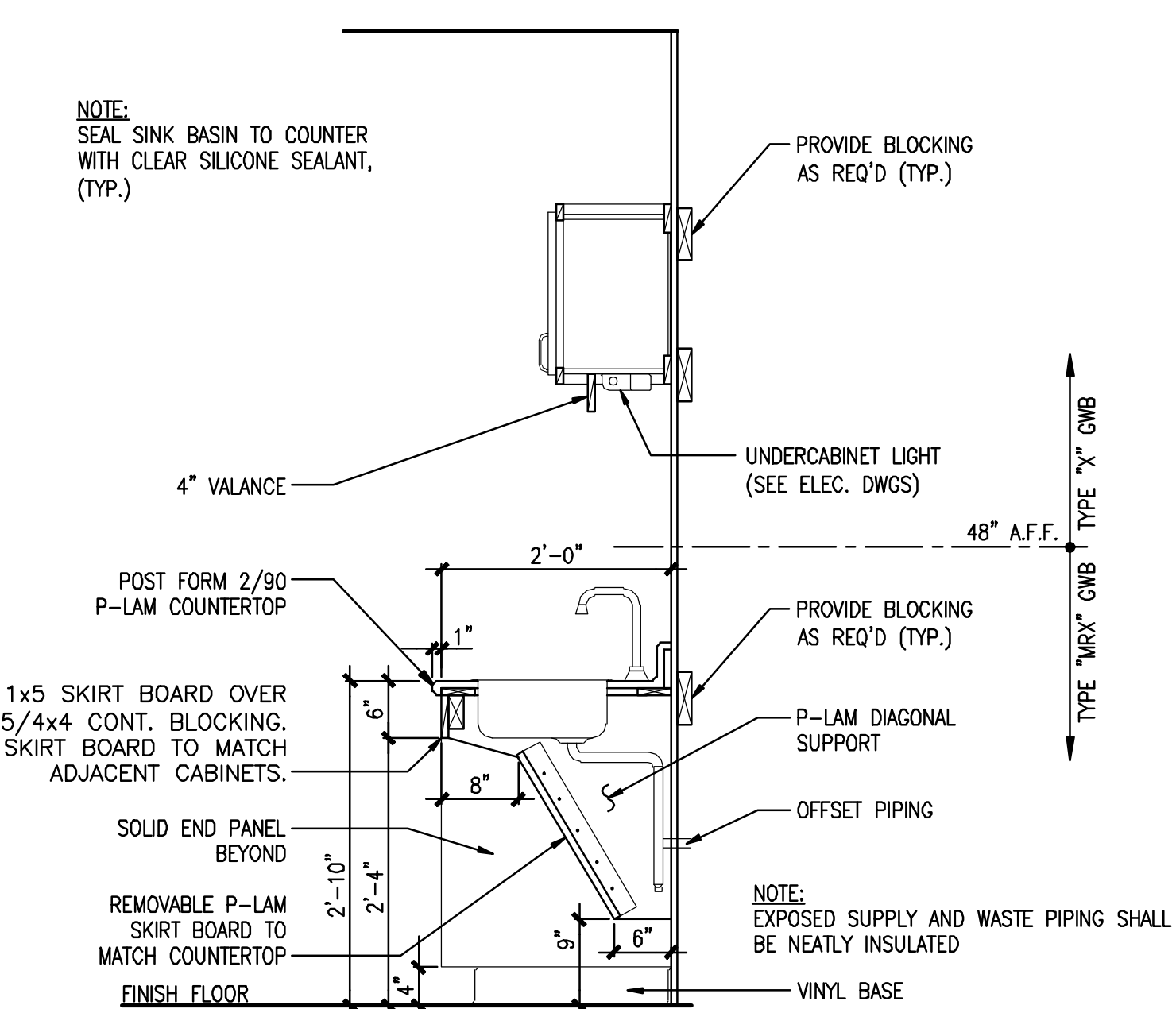
**6** INT. KITCHEN ELEV. AT MANAGER'S APARTMENT  
REFERENCED FROM: SCALE: 3/8" = 1'-0"



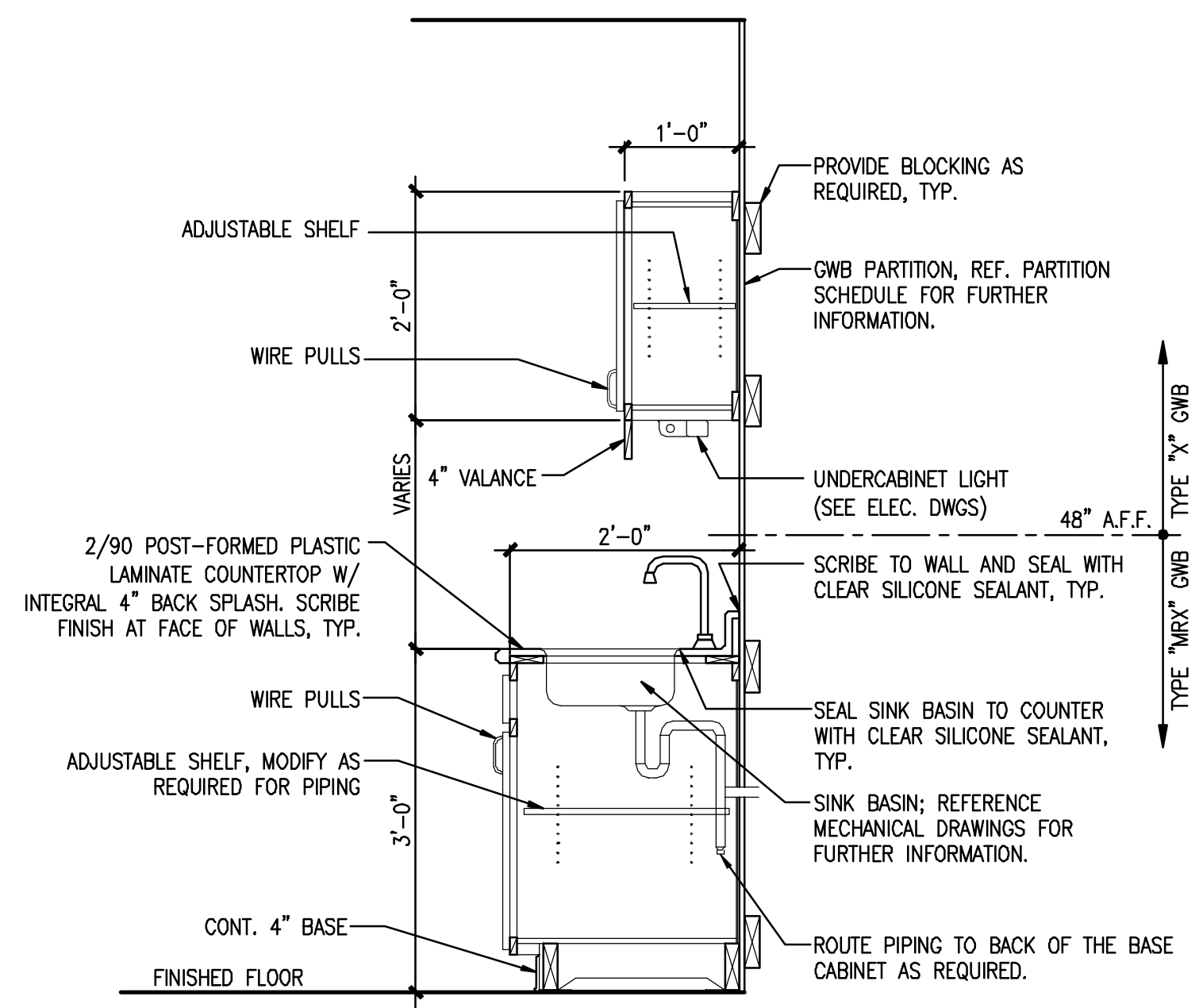
ELEVATION B



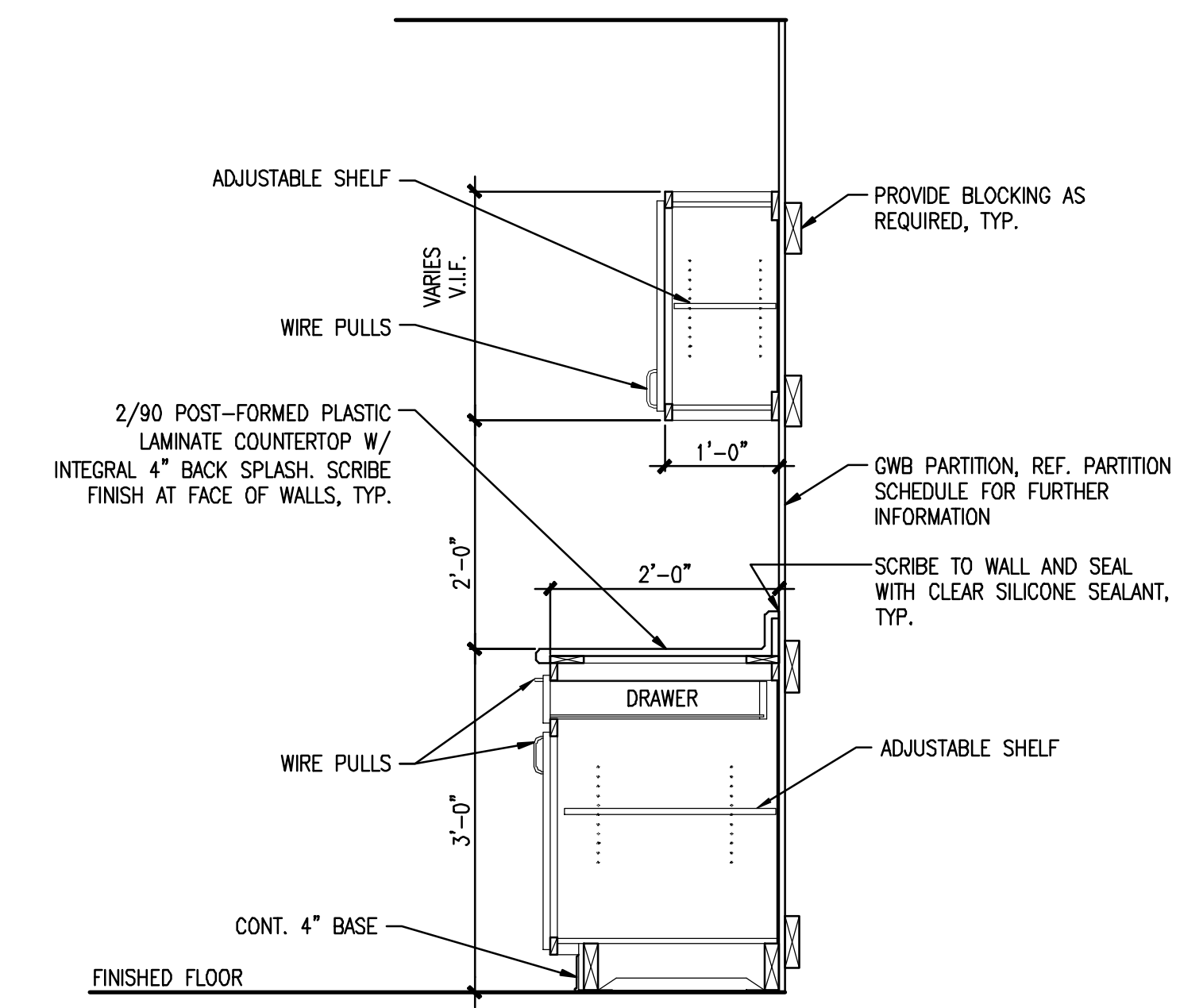
**8** DETAIL @ WORK COUNTER  
REFERENCED FROM: SCALE: 1-1/2" = 1'-0"



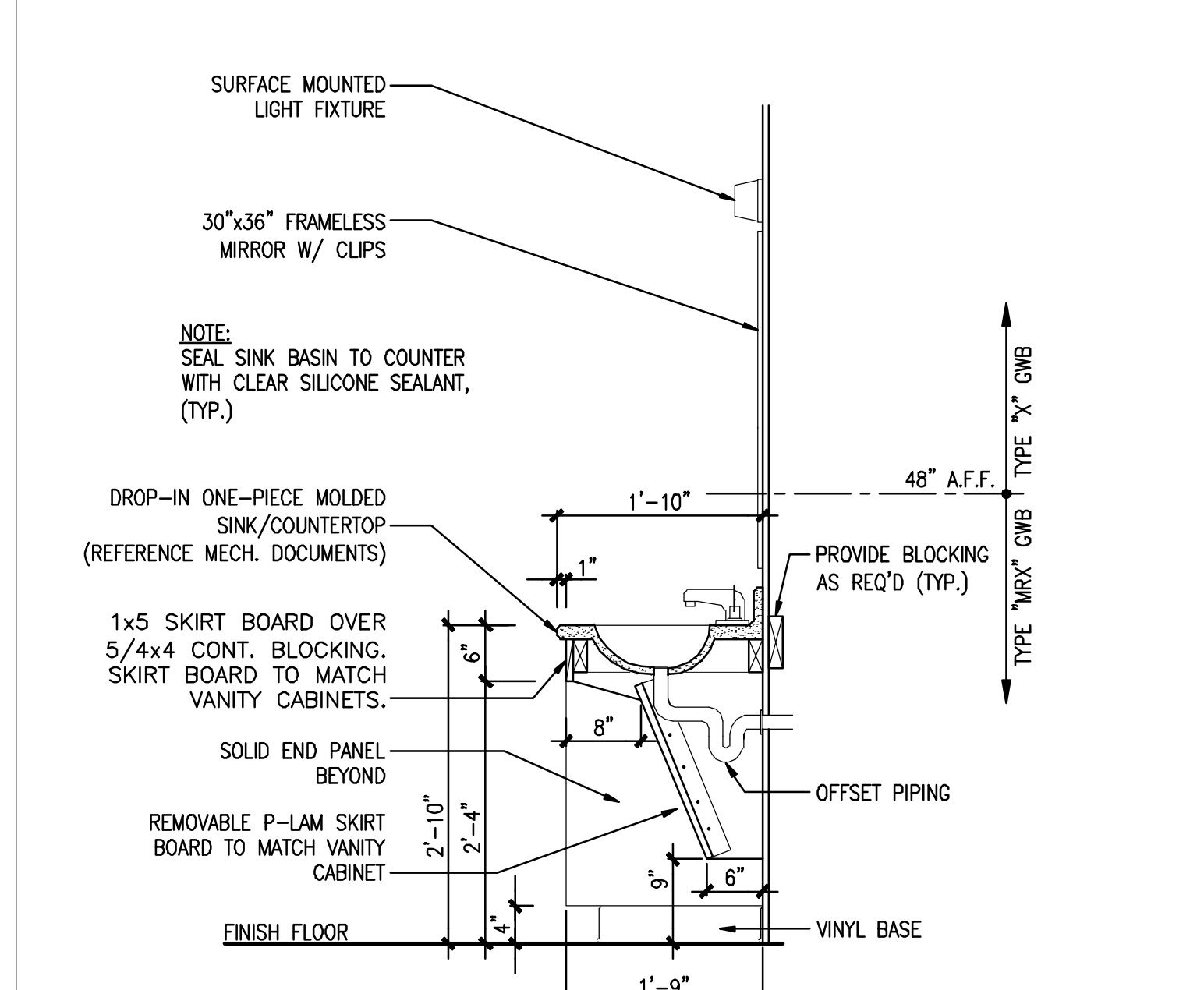
**9** DETAIL @ ACCESSIBLE SINK PANEL  
REFERENCED FROM: SCALE: 3/4" = 1'-0"



**10** DETAIL @ TYPICAL SINK BASE CABINET  
REFERENCED FROM: SCALE: 3/4" = 1'-0"



**11** DETAIL @ TYPICAL KITCHEN CABINETRY  
REFERENCED FROM: SCALE: 3/4" = 1'-0"



**12** DETAIL @ ACCESSIBLE VANITY  
REFERENCED FROM: SCALE: 3/4" = 1'-0"

**CWS Architects**  
Architecture  
Space Planning  
Value Design  
434 Cumberland Avenue  
Portland, ME 04101  
Phone: (207) 774-4441  
Fax: (207) 774-4016  
www.CWSarch.com

REGISTERED ARCHITECT  
BENEDICT  
&  
WALTER  
NO. 1947  
STATE OF MAINE

Owner:  
**SOUTHERN MAINE STUDENT HOUSING LLC**  
247 COMMERCIAL STREET  
ROCKPORT, MAINE 04856  
TEL: (207) 236-4067

Contractor:  
**PIZZAGALLI CONSTRUCTION**  
131 PRESUMPSCOT STREET  
PORTLAND, ME 04103  
TEL: (207) 874-2323  
FAX: (207) 874-2727

**BAYSIDE VILLAGE - A STUDENT HOUSING COMPLEX**  
132 MARGINAL WAY  
PORTLAND, MAINE

Project No: 2006-432/BVP  
Drawing Title:  
**INTERIOR ELEVATIONS UNIT KITCHENS**  
Scale: AS NOTED  
Date: SEPTEMBER 14, 2007  
Revisions:  
Drawing Number:  
**A4.10**