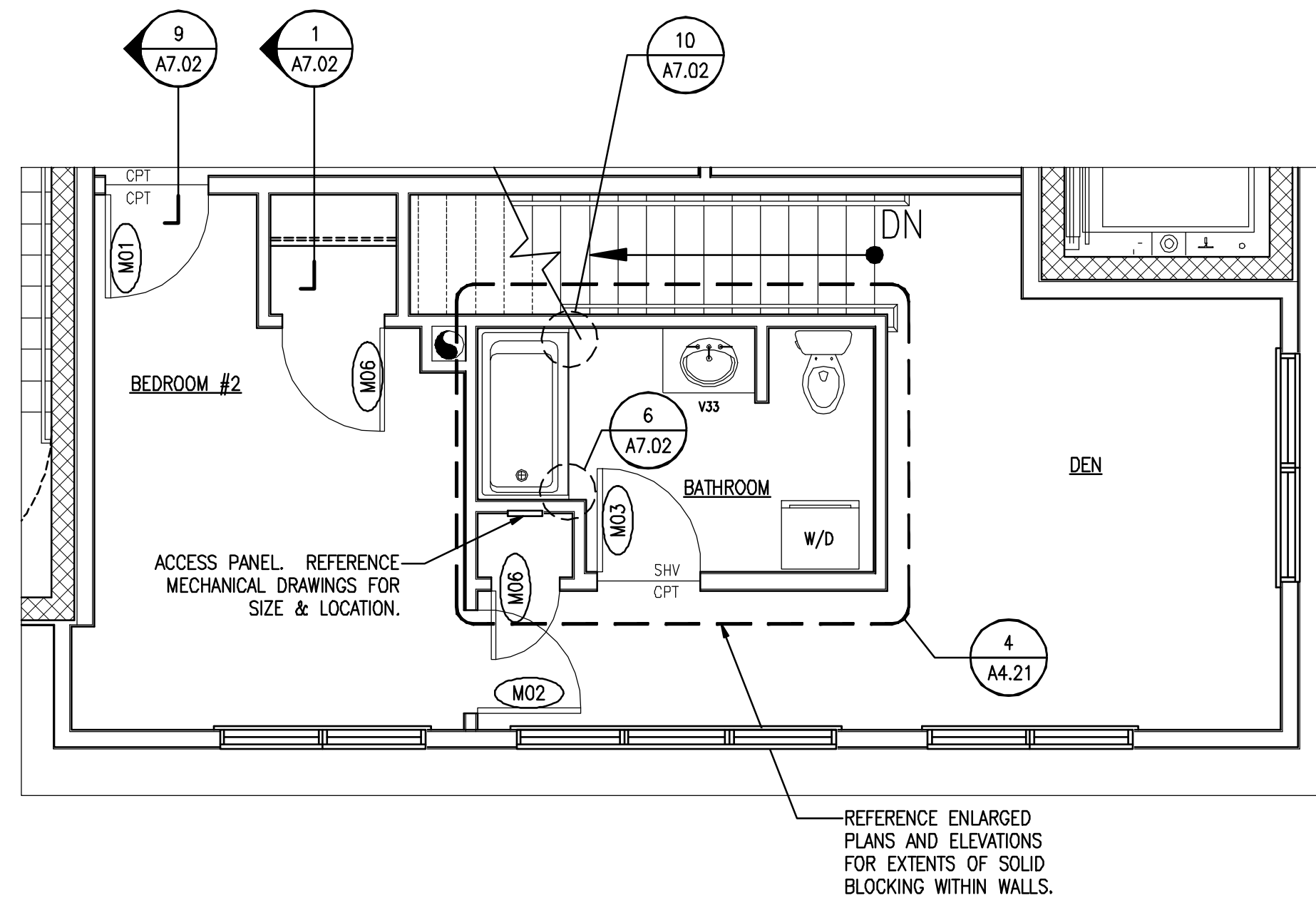


A REFLECTED CEILING PLAN-UPPER LEVEL

REFERENCED FROM:

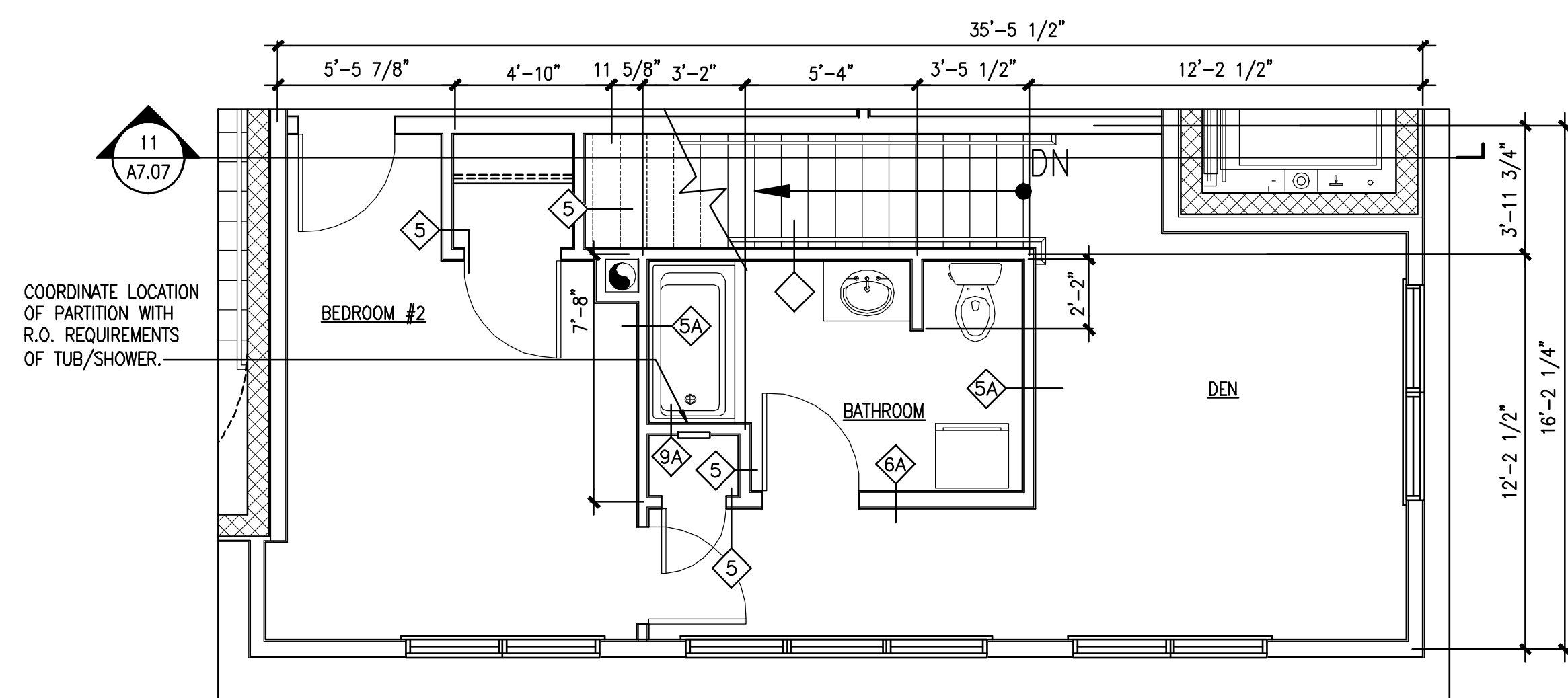
SCALE: 1/4" = 1'-0"



C LAYOUT FLOOR PLAN-UPPER LEVEL

REFERENCED FROM:

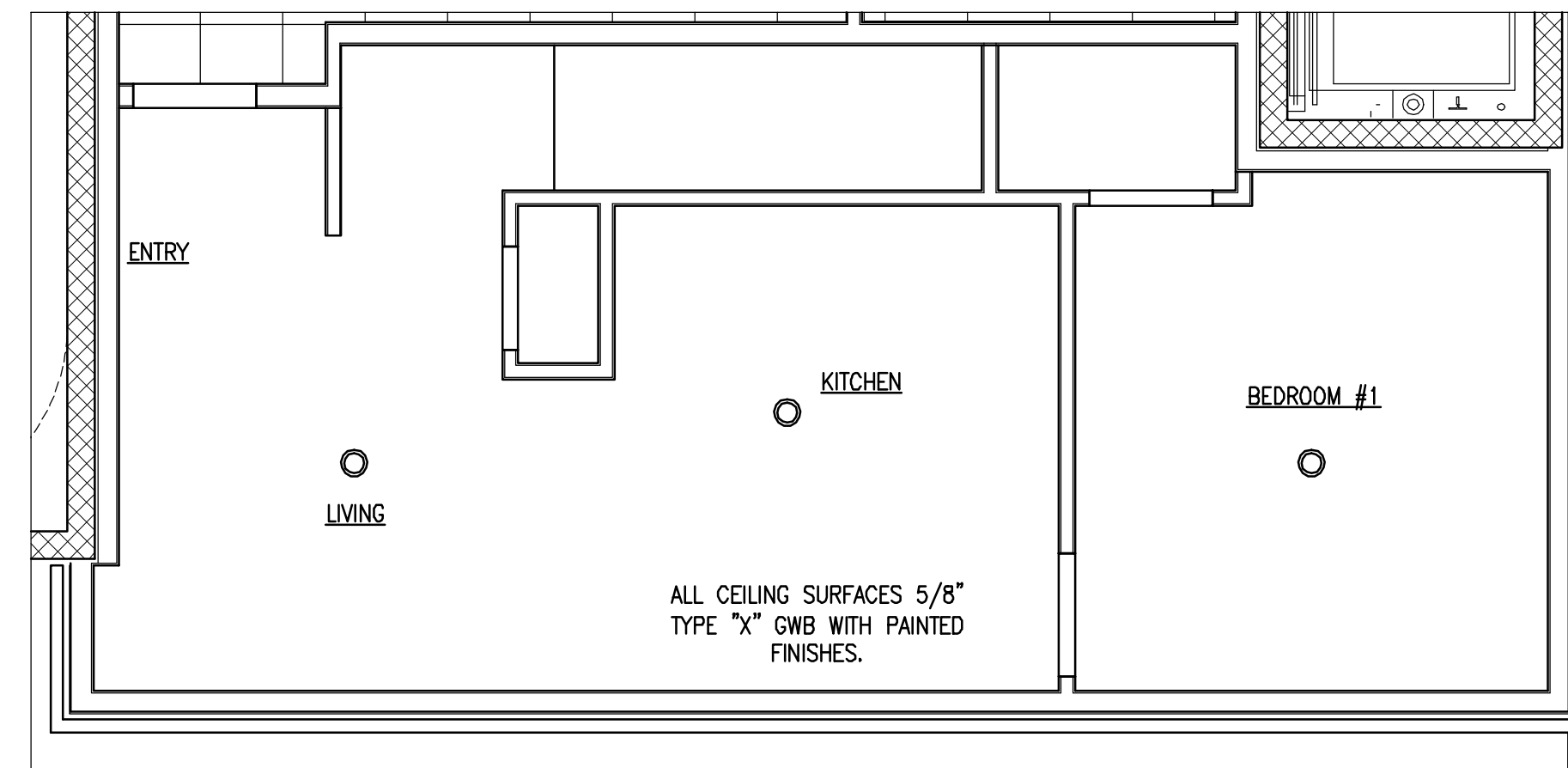
SCALE: 1/4" = 1'-0"



E DIMENSIONAL FLOOR PLAN-UPPER LEVEL

REFERENCED FROM:

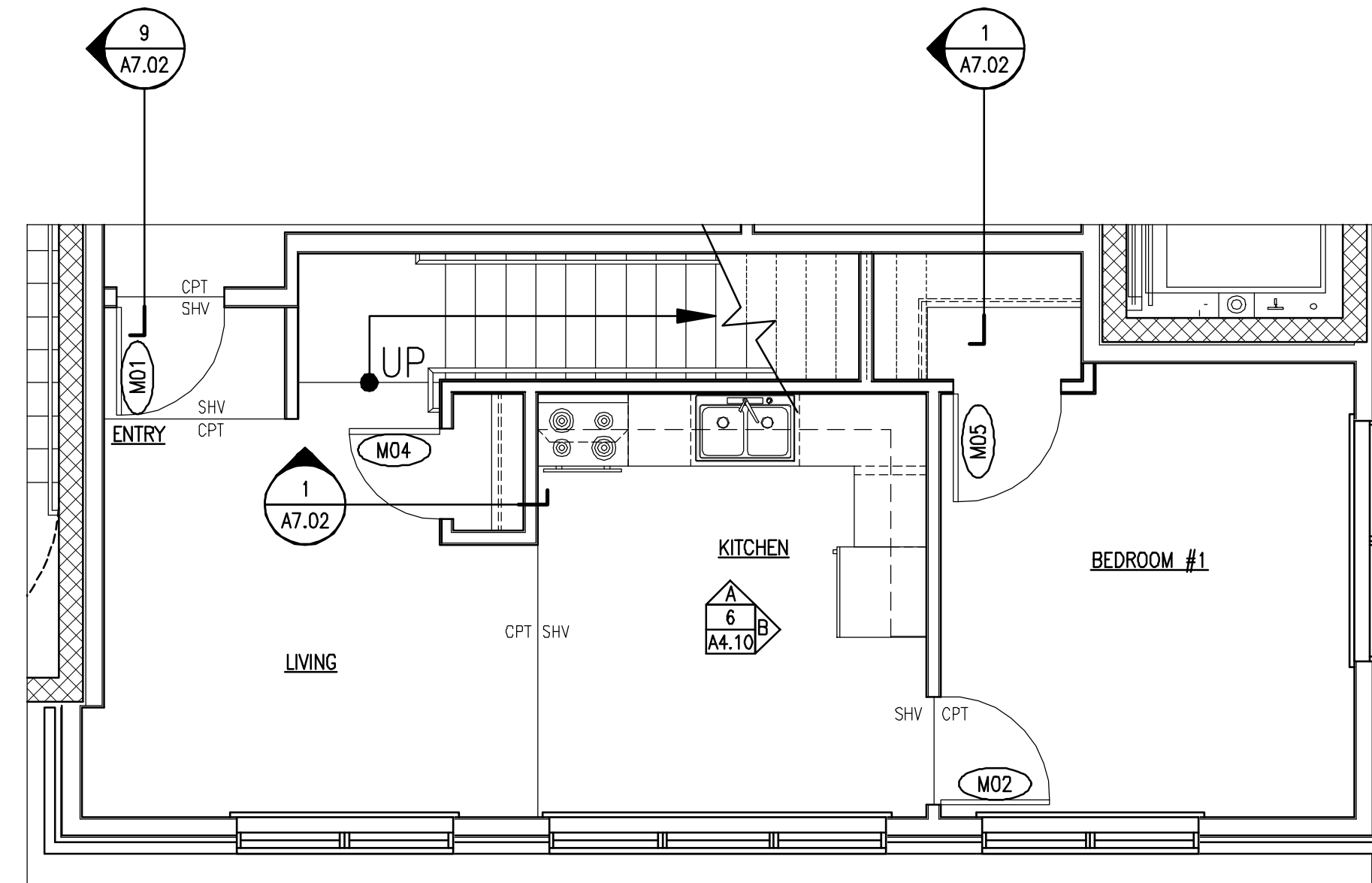
SCALE: 1/4" = 1'-0"



B REFLECTED CEILING PLAN-LOWER LEVEL

REFERENCED FROM:

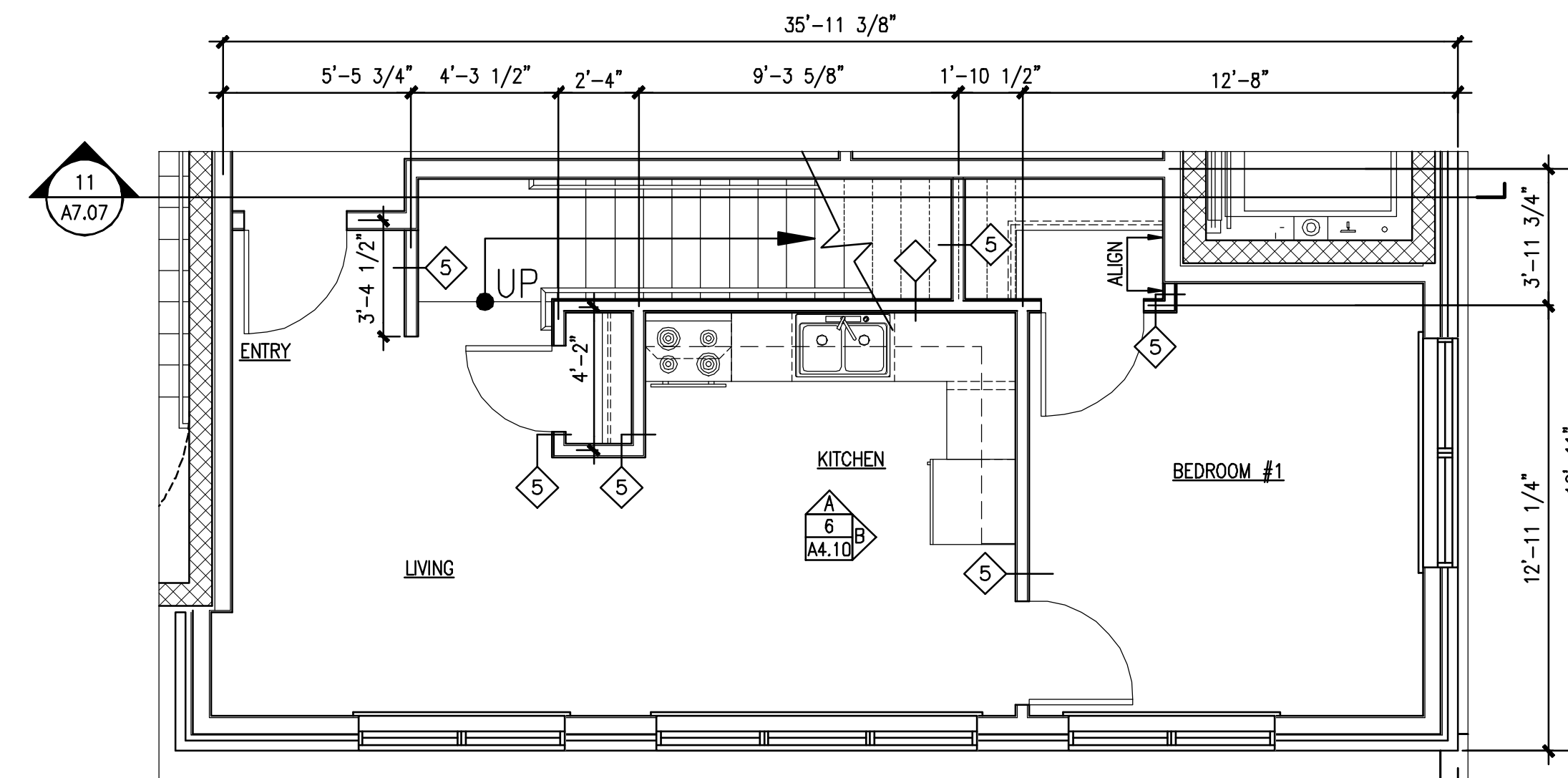
SCALE: 1/4" = 1'-0"



D LAYOUT FLOOR PLAN-LOWER LEVEL

REFERENCED FROM:

SCALE: 1/4" = 1'-0"



F DIMENSIONAL FLOOR PLAN-LOWER LEVEL

REFERENCED FROM:

SCALE: 1/4" = 1'-0"

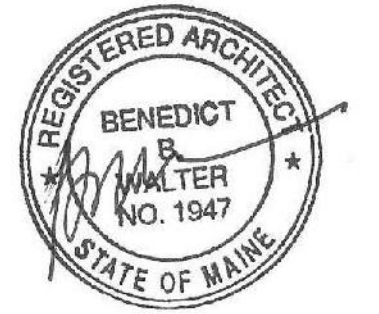


CWS Architects

Architecture
Space Planning
Value Design

434 Cumberland Avenue
Portland, ME 04101
Phone: (207) 774-4441
Fax: (207) 774-4016

www.CWSarch.com



Owner:
SOUTHERN MAINE STUDENT HOUSING LLC
247 COMMERCIAL STREET
ROCKPORT, MAINE 04856
TEL: (207) 236-4067

Contractor:
PIZZAGALLI CONSTRUCTION
131 PRESUMPSCOT STREET
PORTLAND, ME 04103
TEL: (207) 874-2323
FAX: (207) 874-2727

BAYSIDE VILLAGE - A STUDENT HOUSING COMPLEX

132 MARGINAL WAY
PORTLAND, MAINE

Project No: 2006-432-BVP

Drawing Title:
ENLARGED UNIT PLANS - MANAGER APARTMENT

Scale: 1/4" = 1'-0"

Date: SEPTEMBER 14, 2007

Revisions:

- ▲
- ▲
- ▲
- ▲
- ▲

Drawing Number:

A1.U8