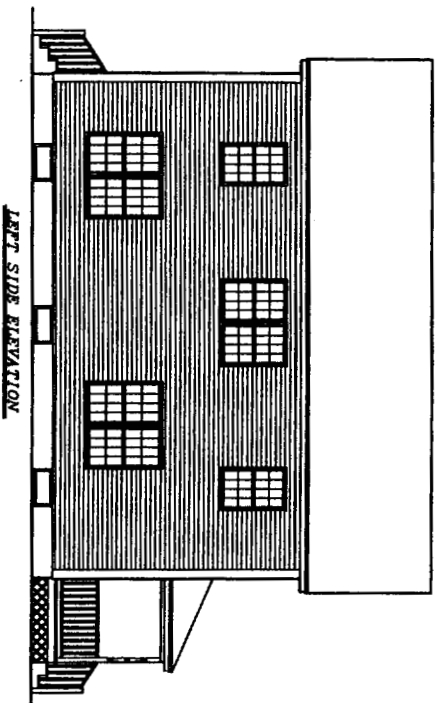


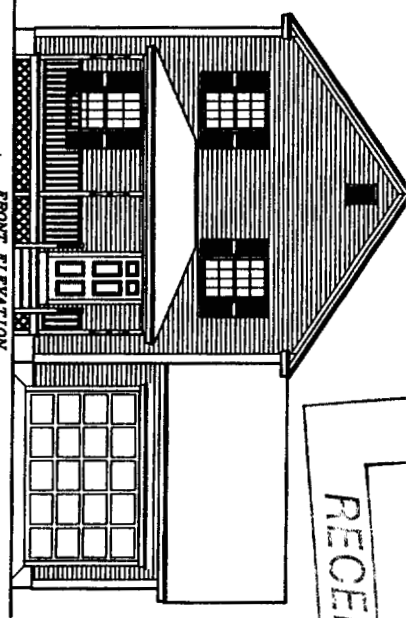
DEPT. OF BUILDING INSPECTION
CITY OF PORTLAND, ME

AUG 14 2006

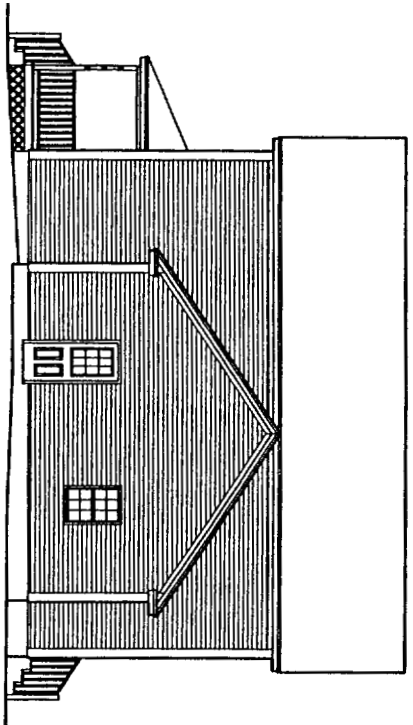
RECEIVED



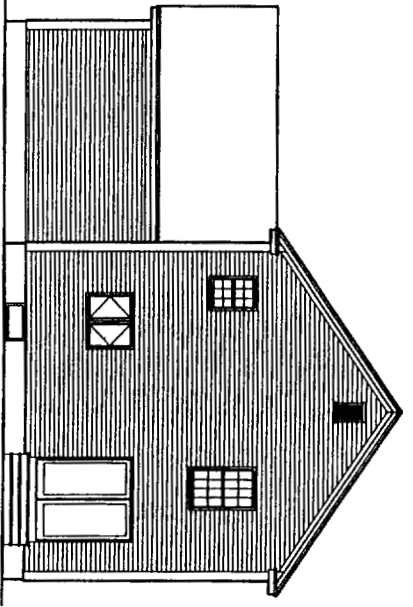
LEFT SIDE ELEVATION



FRONT ELEVATION



RIGHT SIDE ELEVATION



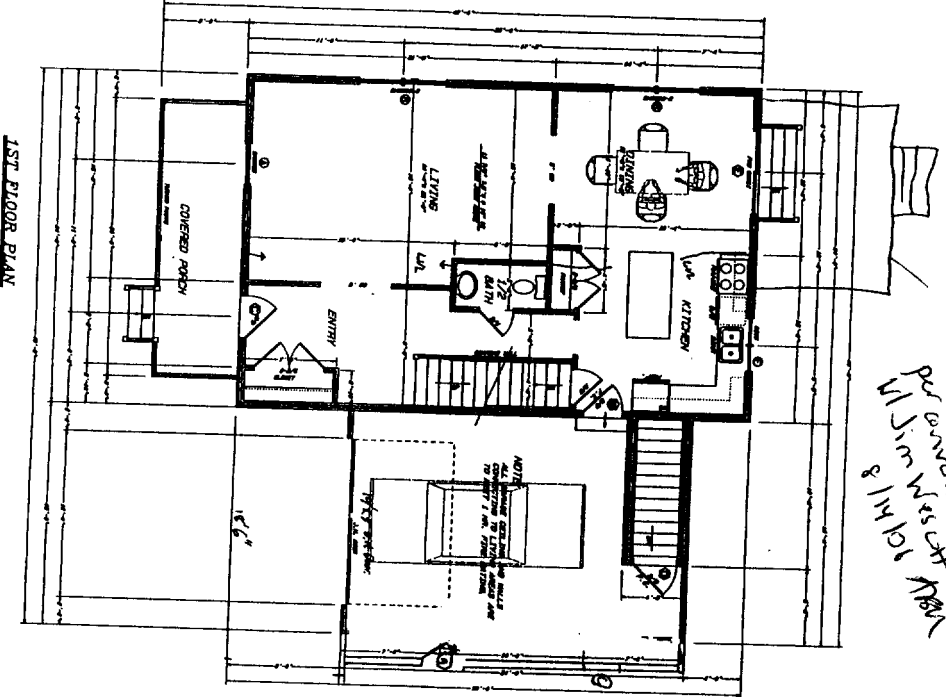
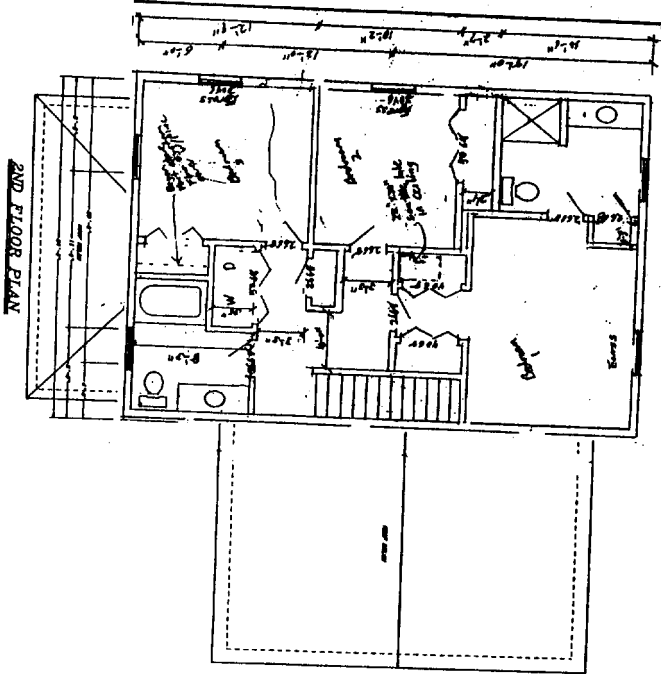
REAR ELEVATION

Lot #9
Yale St

NOTICE: This is a preliminary drawing and is not to be used for construction purposes without the approval of the architect.

MARTIN
WILBE
ARCHITECTS
174 Main St
Portland, ME 04101
Tel: 603-761-1111

WESCOTT & PAYSON
YALE STREET
PORTLAND, MAINE
ELEVATIONS
DATE: FEB. 23, 2006
PAGE: 1 of 4



6x12 deck
per owner's request
10/11/18
8/11/18

NOTE: DIMENSIONS SHOWN FOR BRICK PATTERNS

ITEM	TYPE	SIZE	MANUFACTURER
1	BRICK	8" x 8" x 16"	UNION BRICK CO.
2	BRICK	8" x 8" x 16"	UNION BRICK CO.
3	BRICK	8" x 8" x 16"	UNION BRICK CO.
4	BRICK	8" x 8" x 16"	UNION BRICK CO.
5	BRICK	8" x 8" x 16"	UNION BRICK CO.
6	BRICK	8" x 8" x 16"	UNION BRICK CO.
7	BRICK	8" x 8" x 16"	UNION BRICK CO.
8	BRICK	8" x 8" x 16"	UNION BRICK CO.
9	BRICK	8" x 8" x 16"	UNION BRICK CO.
10	BRICK	8" x 8" x 16"	UNION BRICK CO.

NOTE: DIMENSIONS SHOWN FOR BRICK PATTERNS

ITEM	TYPE	SIZE	MANUFACTURER
1	BRICK	8" x 8" x 16"	UNION BRICK CO.
2	BRICK	8" x 8" x 16"	UNION BRICK CO.
3	BRICK	8" x 8" x 16"	UNION BRICK CO.
4	BRICK	8" x 8" x 16"	UNION BRICK CO.
5	BRICK	8" x 8" x 16"	UNION BRICK CO.
6	BRICK	8" x 8" x 16"	UNION BRICK CO.
7	BRICK	8" x 8" x 16"	UNION BRICK CO.
8	BRICK	8" x 8" x 16"	UNION BRICK CO.
9	BRICK	8" x 8" x 16"	UNION BRICK CO.
10	BRICK	8" x 8" x 16"	UNION BRICK CO.

NOTICE:
THIS DRAWING IS THE PROPERTY OF
MARTIN, WELTER & COMPANY, INC.
AND IS NOT TO BE REPRODUCED OR
TRANSMITTED IN ANY FORM OR BY
ANY MEANS, ELECTRONIC OR MECHANICAL,
INCLUDING PHOTOCOPYING, RECORDING,
OR BY ANY INFORMATION STORAGE AND
RETRIEVAL SYSTEM, WITHOUT THE
WRITTEN PERMISSION OF MARTIN, WELTER &
COMPANY, INC.

MARTIN WELTER & COMPANY, INC.
ARCHITECTS

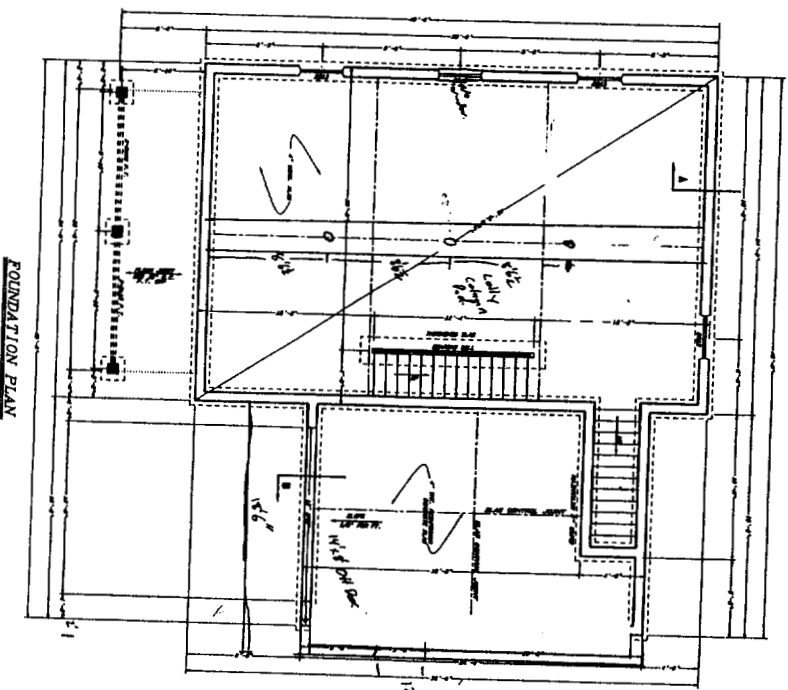
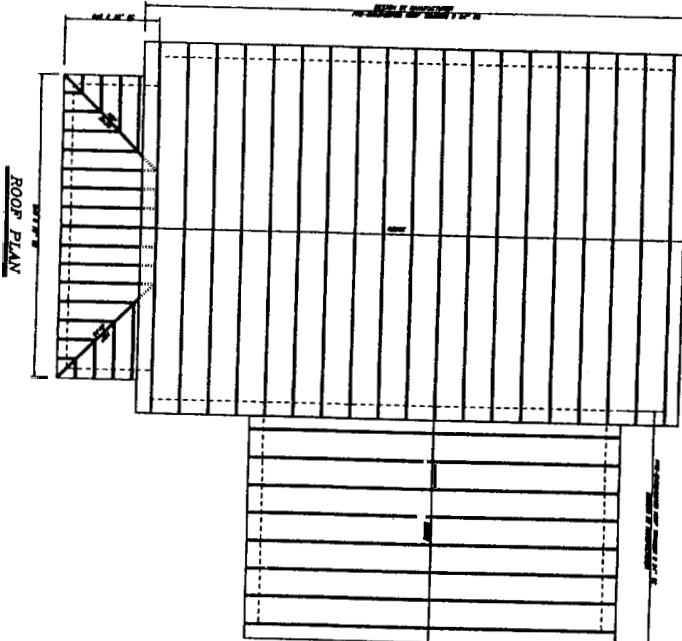
MESCOTT & PAYSON
YALE STREET
PORTLAND, MAINE

FLOOR PLANS

PROJECT: 142-1-1-4
DATE: FEB. 23, 2005

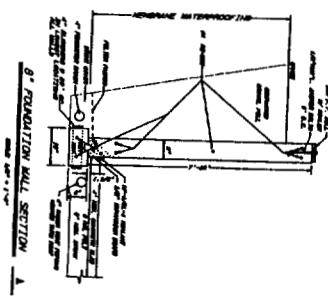
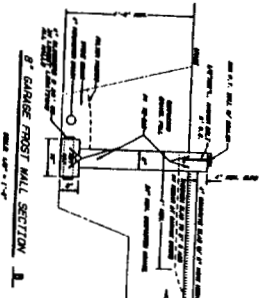
DRAWN BY: J. WELTER
CHECKED BY: M. WELTER
DATE: FEB. 23, 2005

2 of 4



- CONCRETE NOTES
1. ALL IN AIR COMPRESSIVE STRENGTH 3000 PSI GRADE 4 STRUCTURE SLABS
 2. DESIGN OF FOOTING TO BE MADE BY AN ENGINEER
 3. ALL REINFORCING TO BE PLACED IN THE FOOTING
 4. ALL REINFORCING TO BE PLACED IN THE FOOTING
 5. ALL REINFORCING TO BE PLACED IN THE FOOTING

NOTICE:
 THIS DRAWING IS THE PROPERTY OF
 THE ARCHITECT AND IS NOT TO BE
 REPRODUCED OR COPIED IN ANY MANNER
 WITHOUT HIS WRITTEN PERMISSION.



MARTIN ARCHITECT PORTLAND, MAINE	
WESCOTT & PAYSON YALE STREET PORTLAND, MAINE	
FOUNDATION & ROOF PLAN	
FEB. 23, 2008	
3 OF 4	

