

Front Elevation N=1-0"

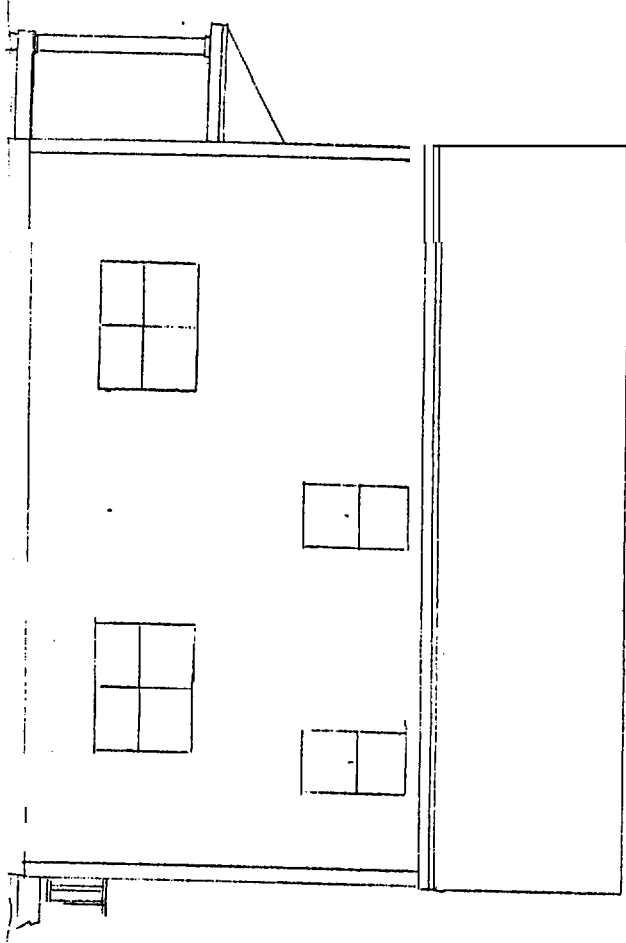
Rear Elevation K=1-10"

3 1/2" Board HT
w/spacing 10"
w/spacing 24"
w/spacing 24"
w/spacing 24"

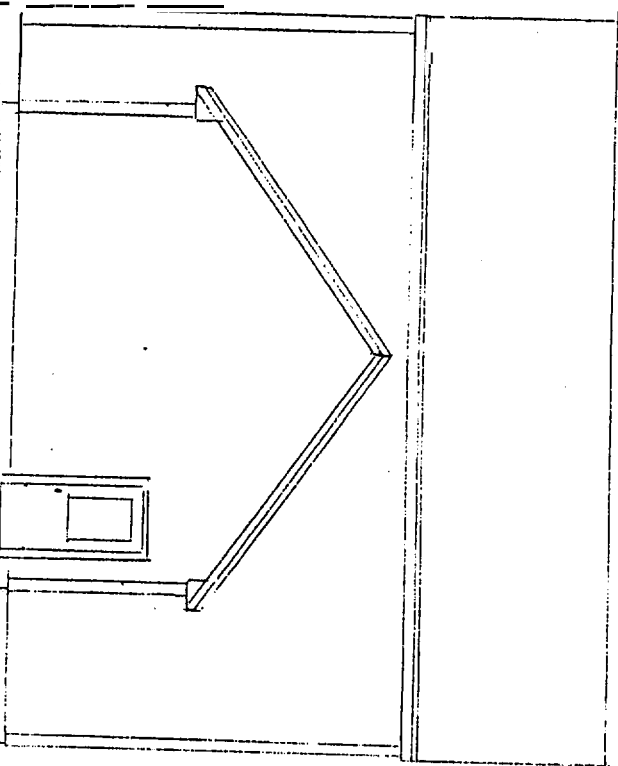
4x4 ft
post on
support pins
C 2x2x 1/2" w/spacing 24"

Lot # 8 461/2 St.

SCALE:	APPROVED BY:
DATE:	DRAWN BY:
	REVIEWED:
	DATE AND SIGNATURE:

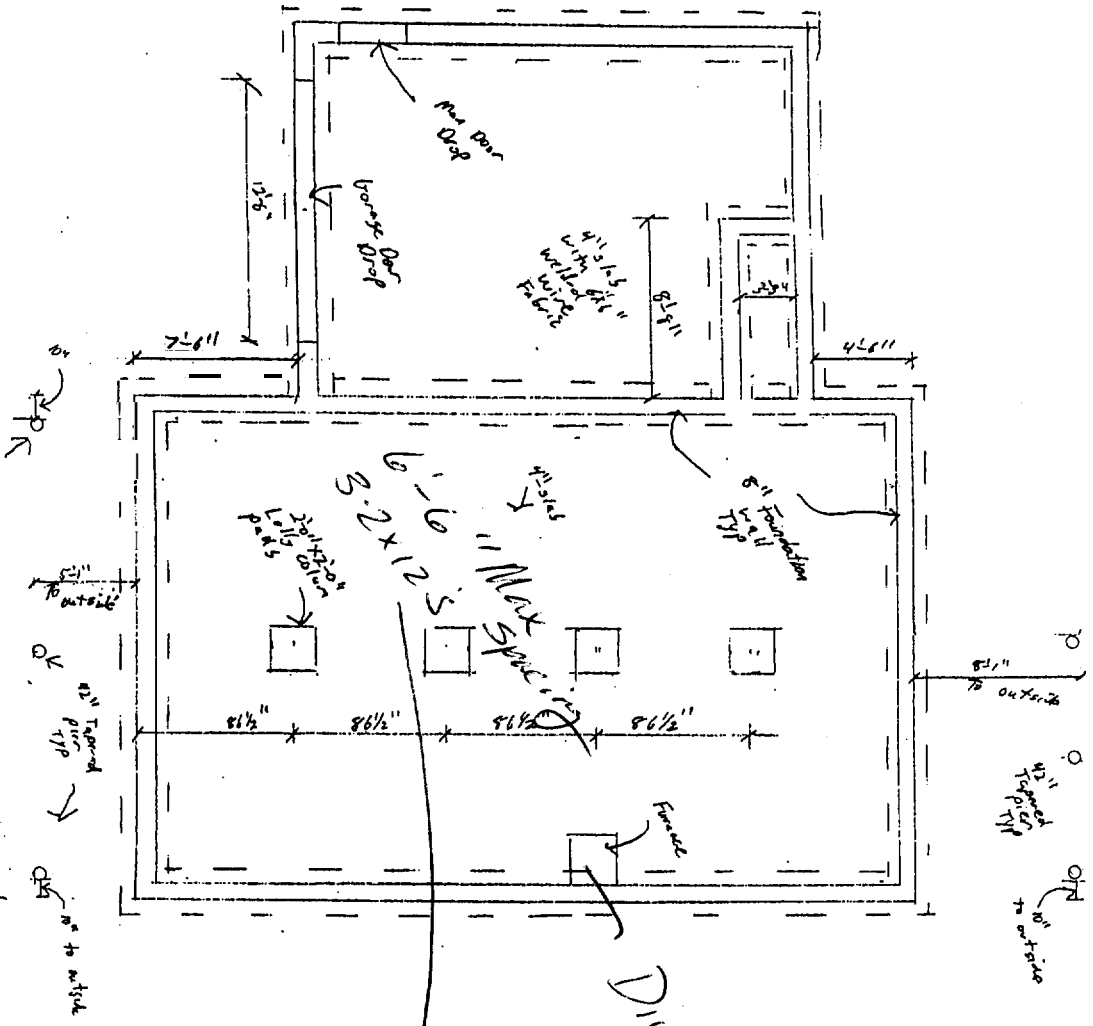
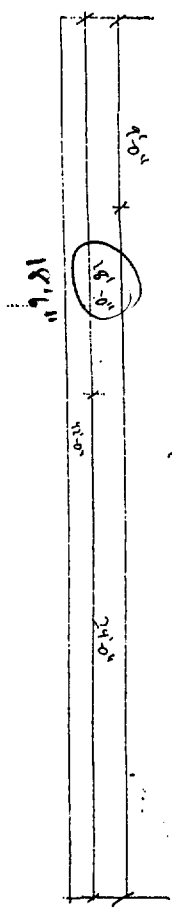
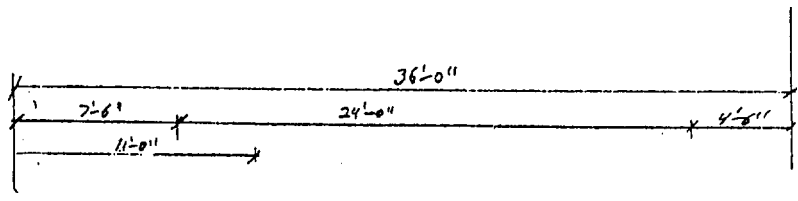


Right Elevation $\frac{1}{8}'' = 1'-0''$



Left Elevation $\frac{1}{8}'' = 1'-0''$

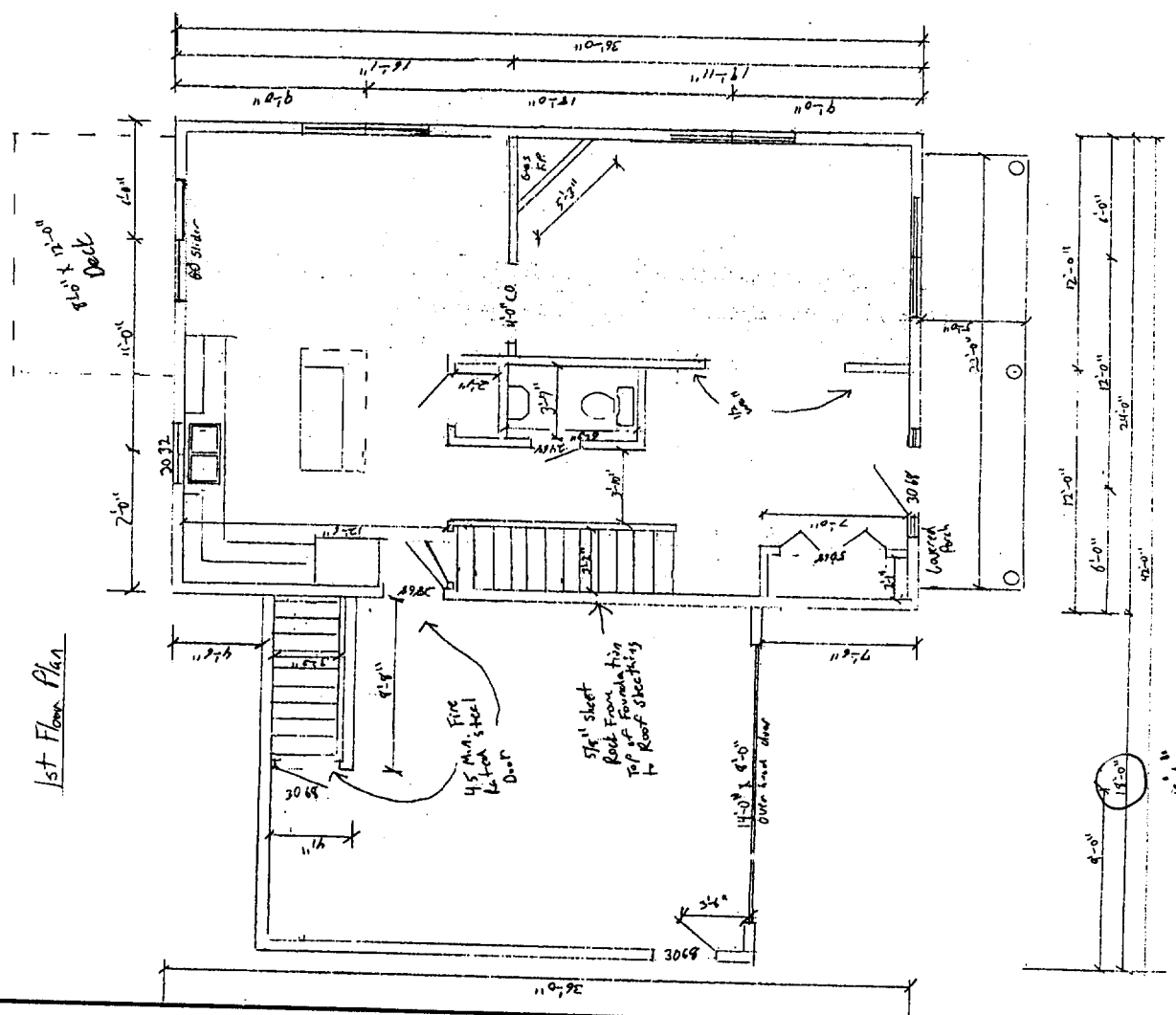
SCALE:	APPROVED BY:	DRAWN BY:
DATE:	RECORDED:	
		DRAWING NUMBER:



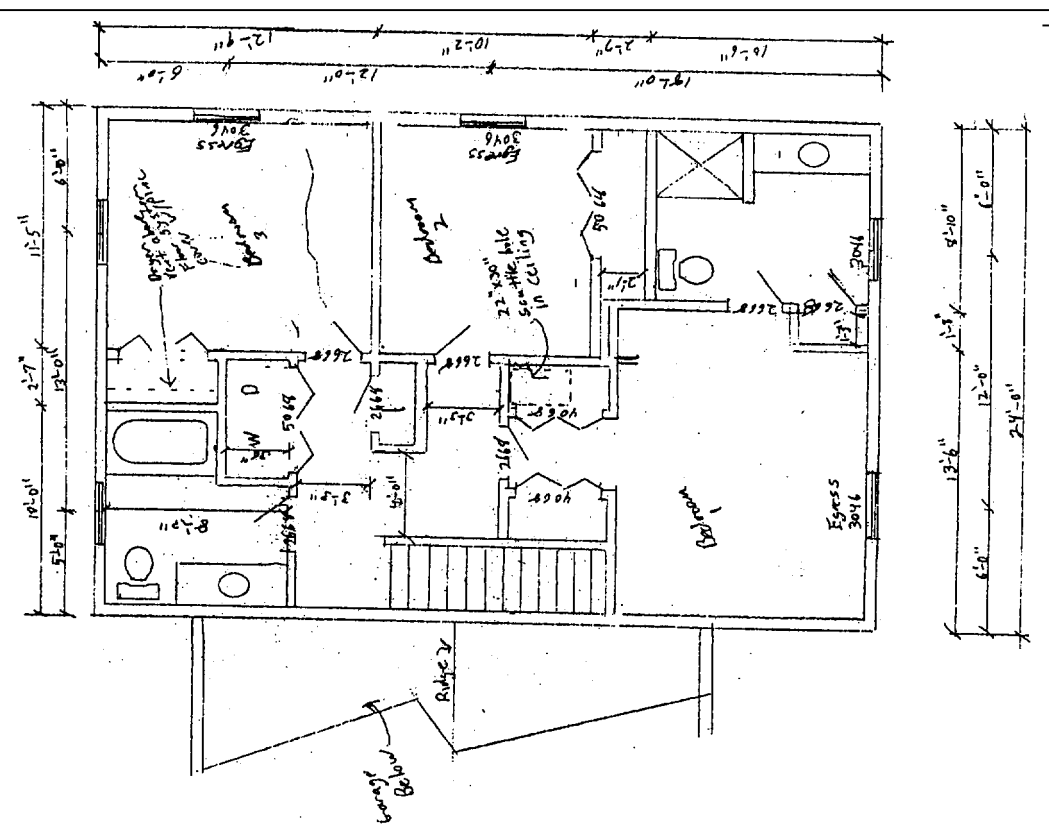
Direct Vent
 Applying over Lobby of Jim
 want

Foundation Plan	
Scale: 1/8" = 1'-0"	
Date:	
4	

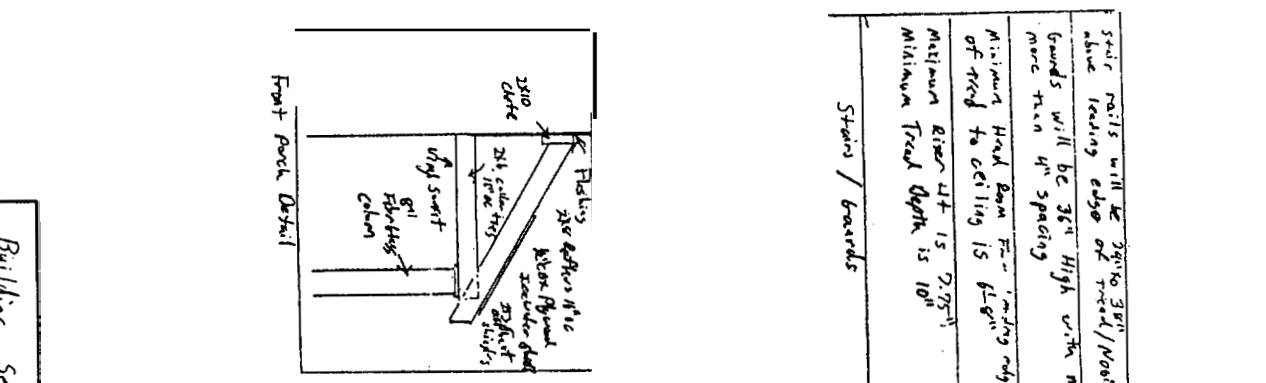
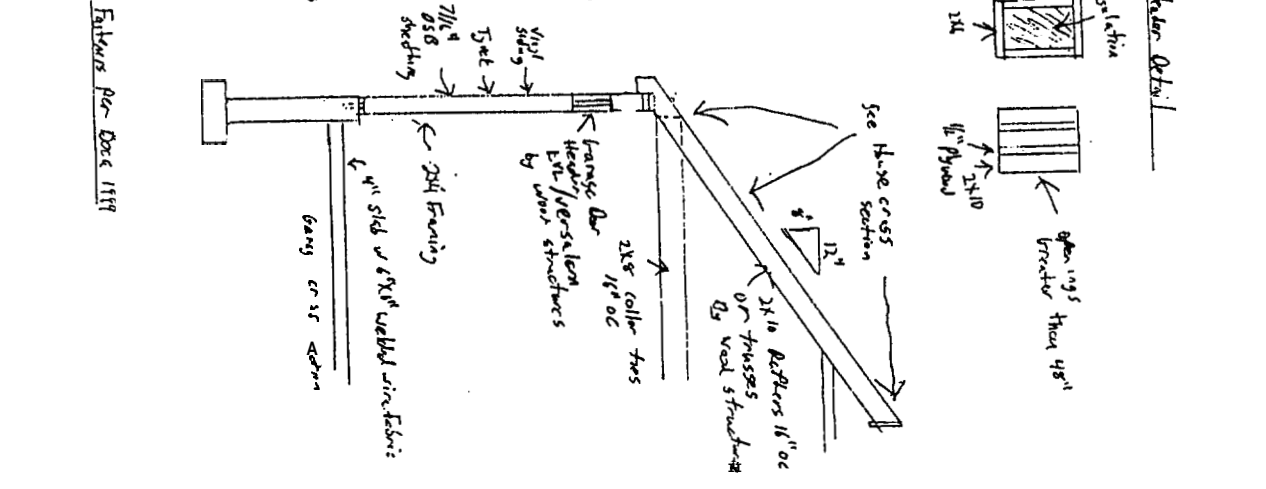
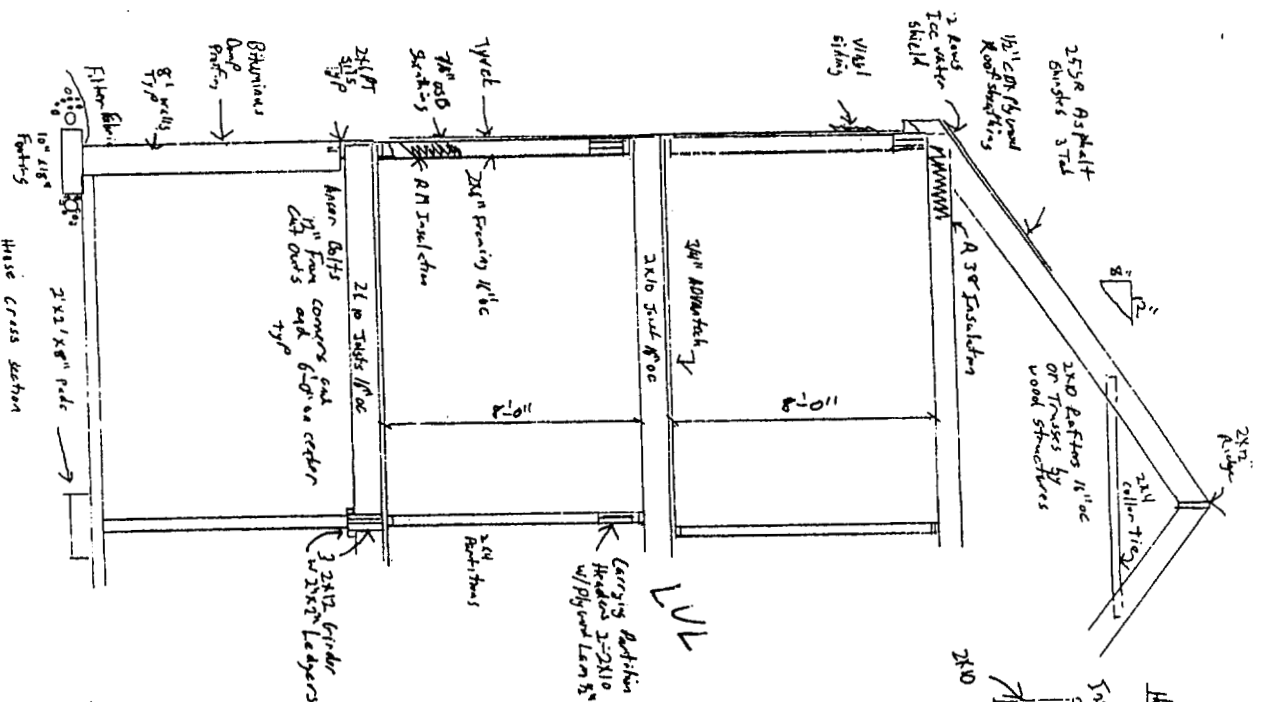
1st Floor Plan



2ND Floor Plan

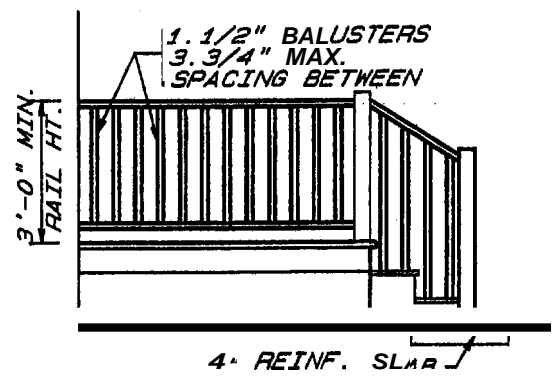
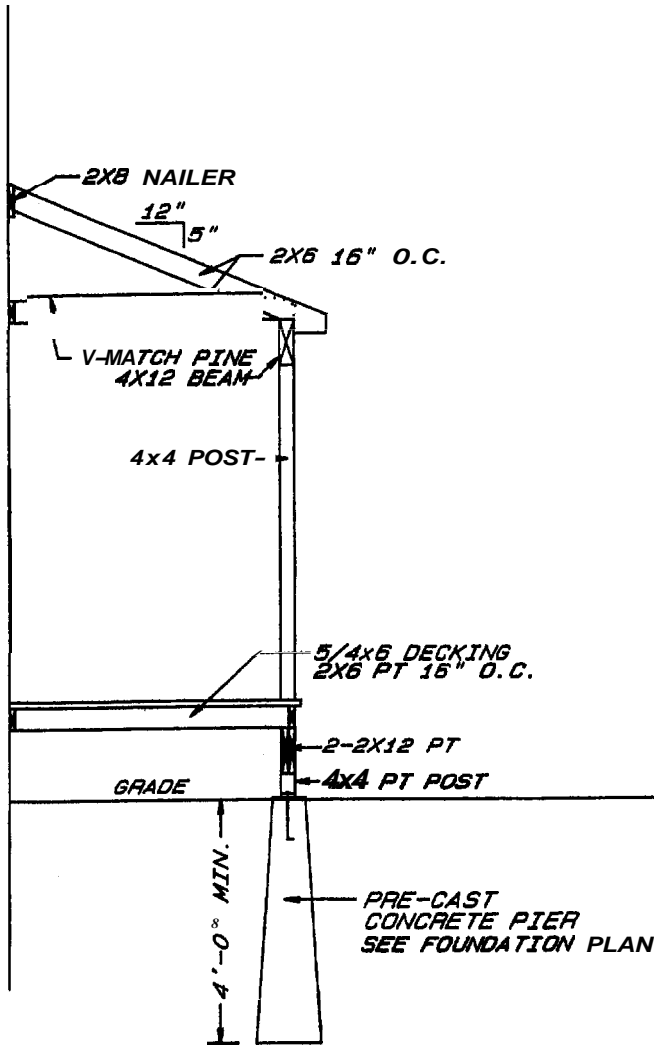


DATE:	APPROVED BY:	DRAWN BY:



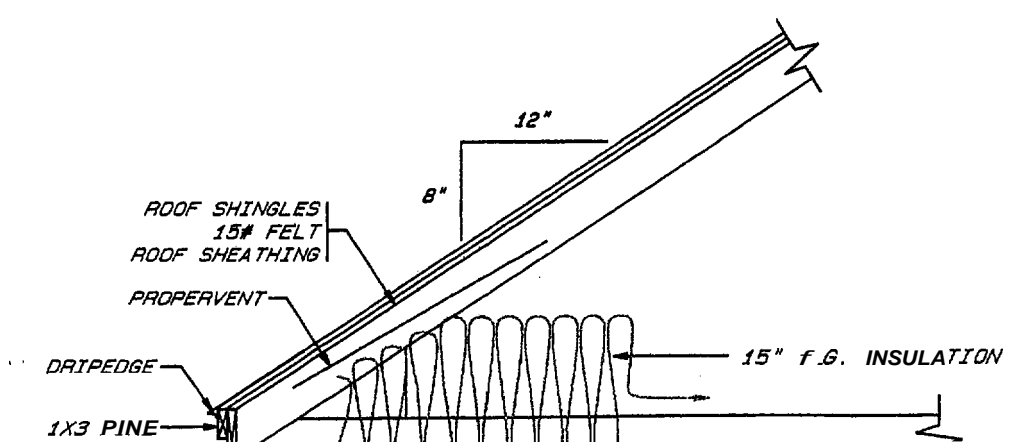
Nail rails will be 3x10s 3x11
 above leading edge of tread/Noosing
 Girders will be 3x11 High with no
 more than 4" spacing
 Minimum Head Room for leading edge
 of tread to ceiling 15' 6 1/2"
 Minimum Tread Depth 15' 10"
 Stairs / boards

Building Section	
SCALE:	DRAWN BY:
DATE:	REVISED:

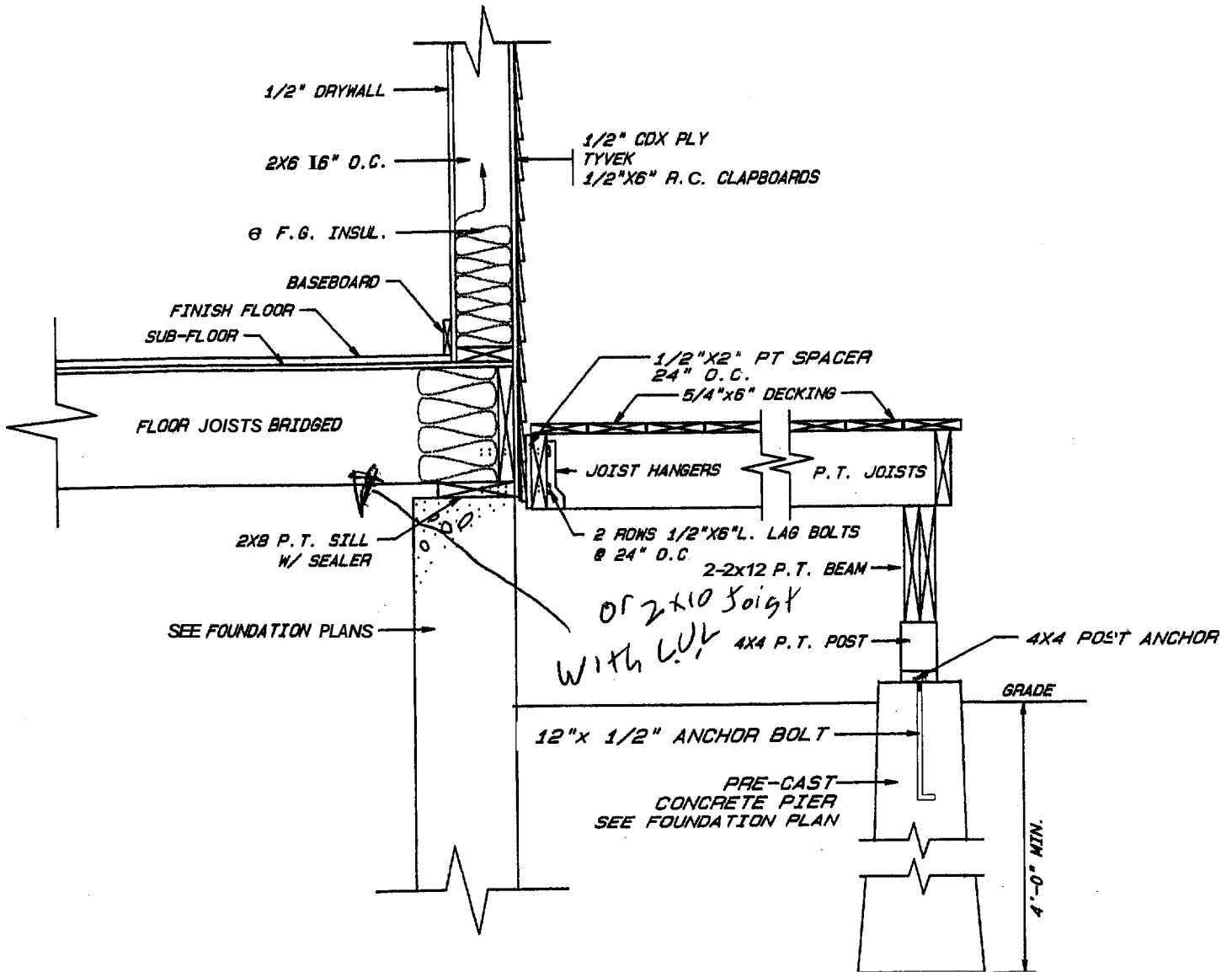


STAIR RAIL DETAIL

SECTION @ PORCH



2x1



PORCH DECK DETAIL

SCALE: 3/4" = 1'-0"

