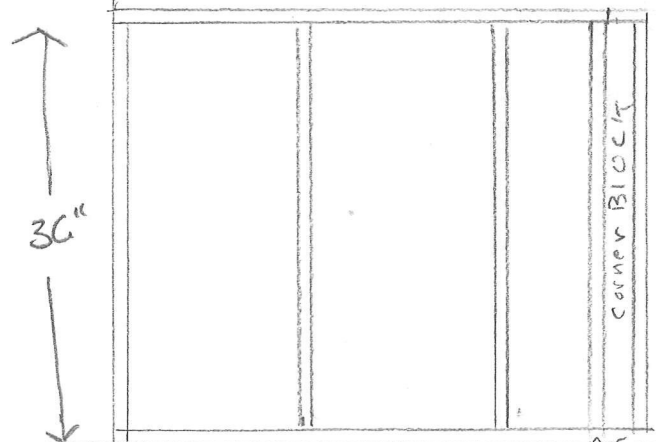
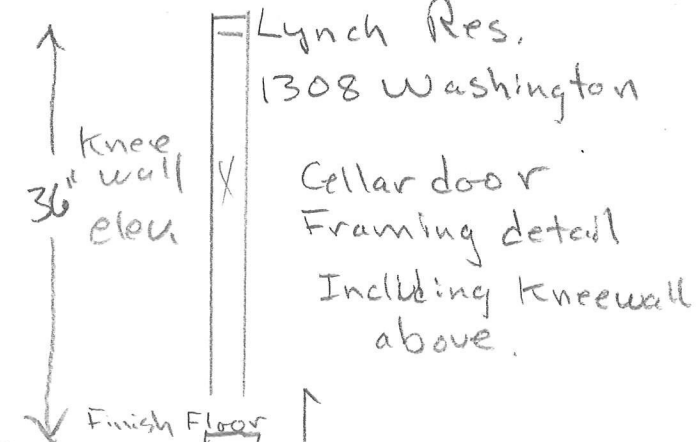


Facing Door way



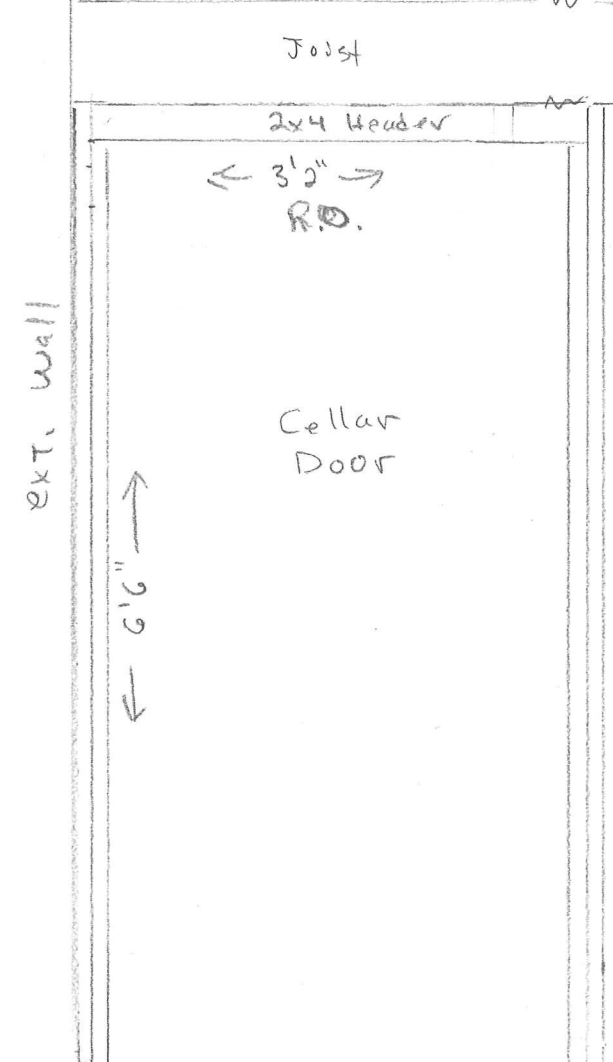
Living Room
Kneewall Framing
2x4, 16" oc



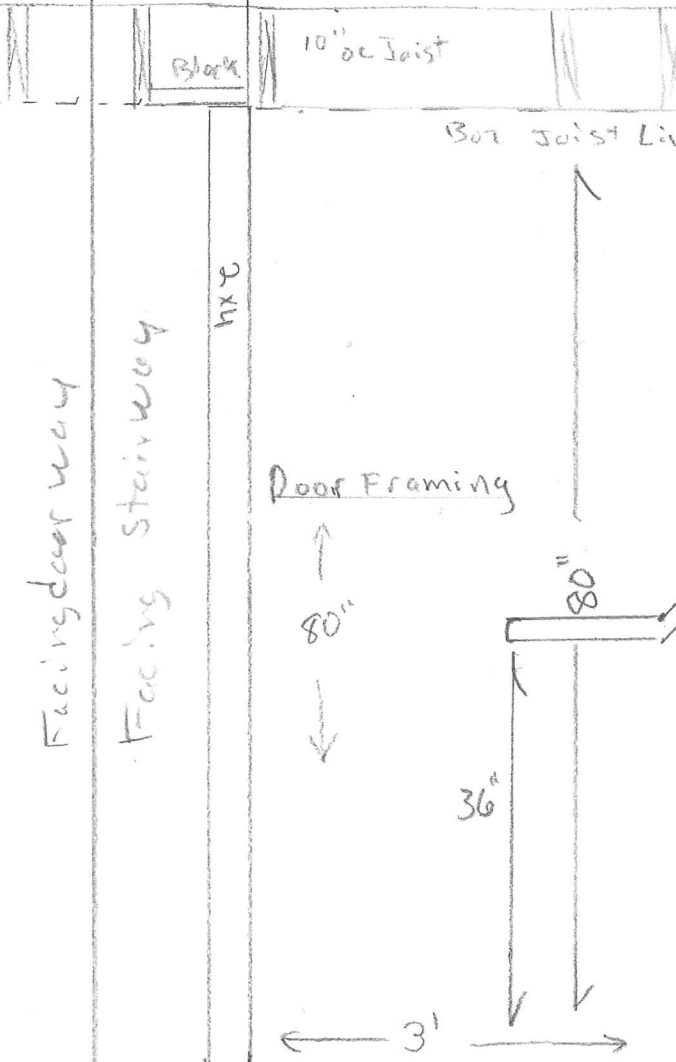
Lynch Res.
1308 Washington
Cellar door
Framing detail
Including kneewall
above.

Page 6

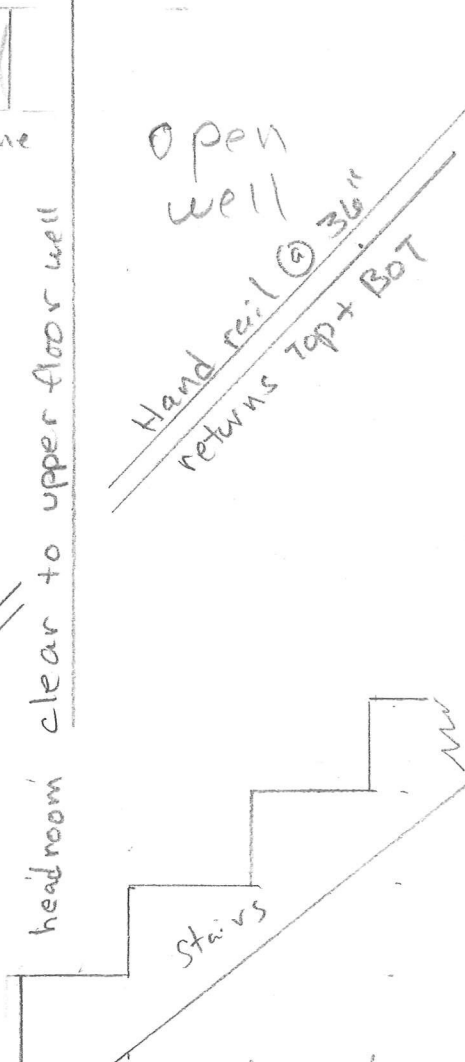
44" is
OUTSIDE
controlling
width
of BAY



Cellar Door



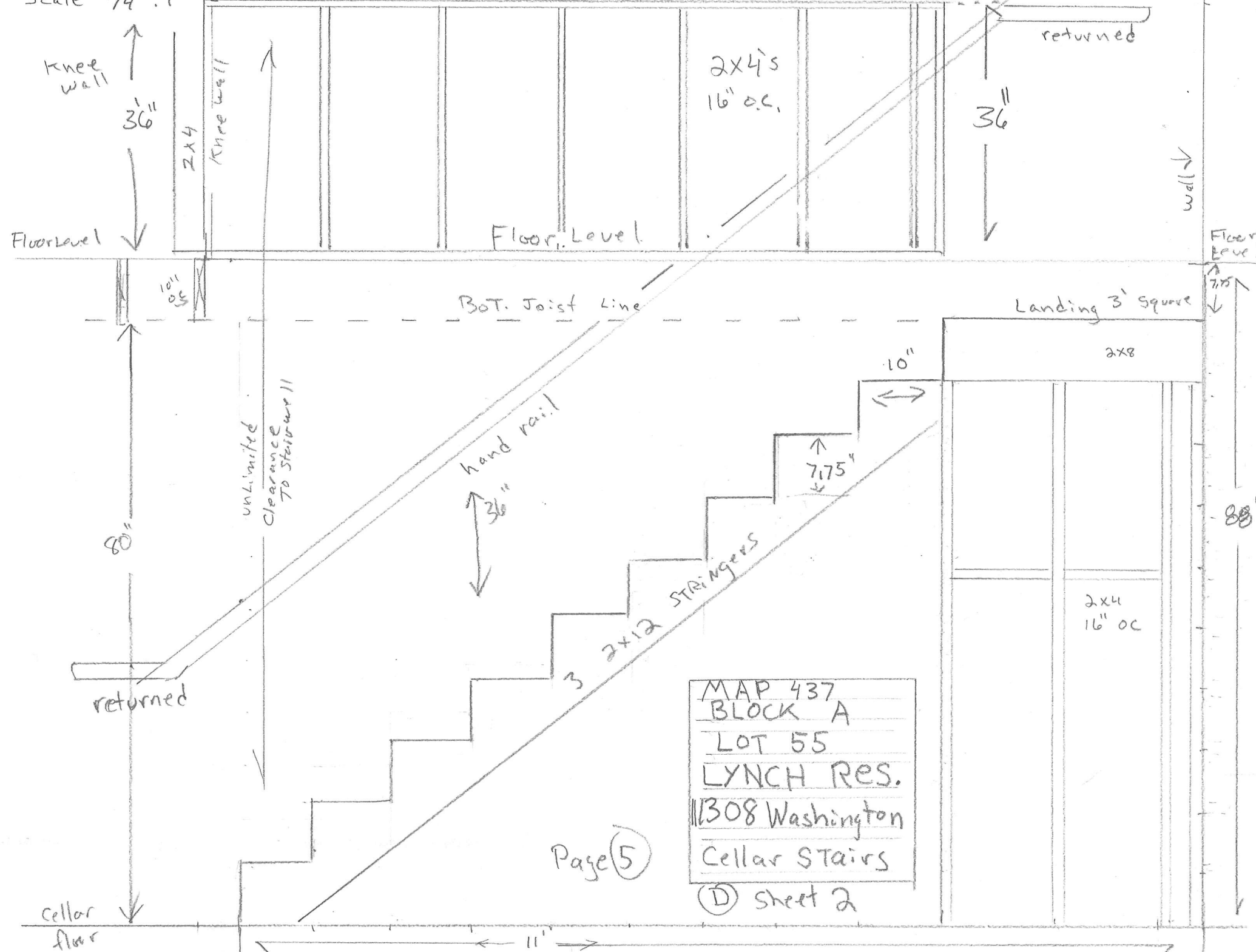
Facing door way
Facing stairway



Open well
Hand rail @ 36"
returns Top + Bot

headroom clear to upper floor well

Scale 3/4" = 1'



Cellar floor

Page 5

MAP 437
BLOCK A
LOT 55
LYNCH RES.
1308 Washington
Cellar STAIRS
Sheet 2