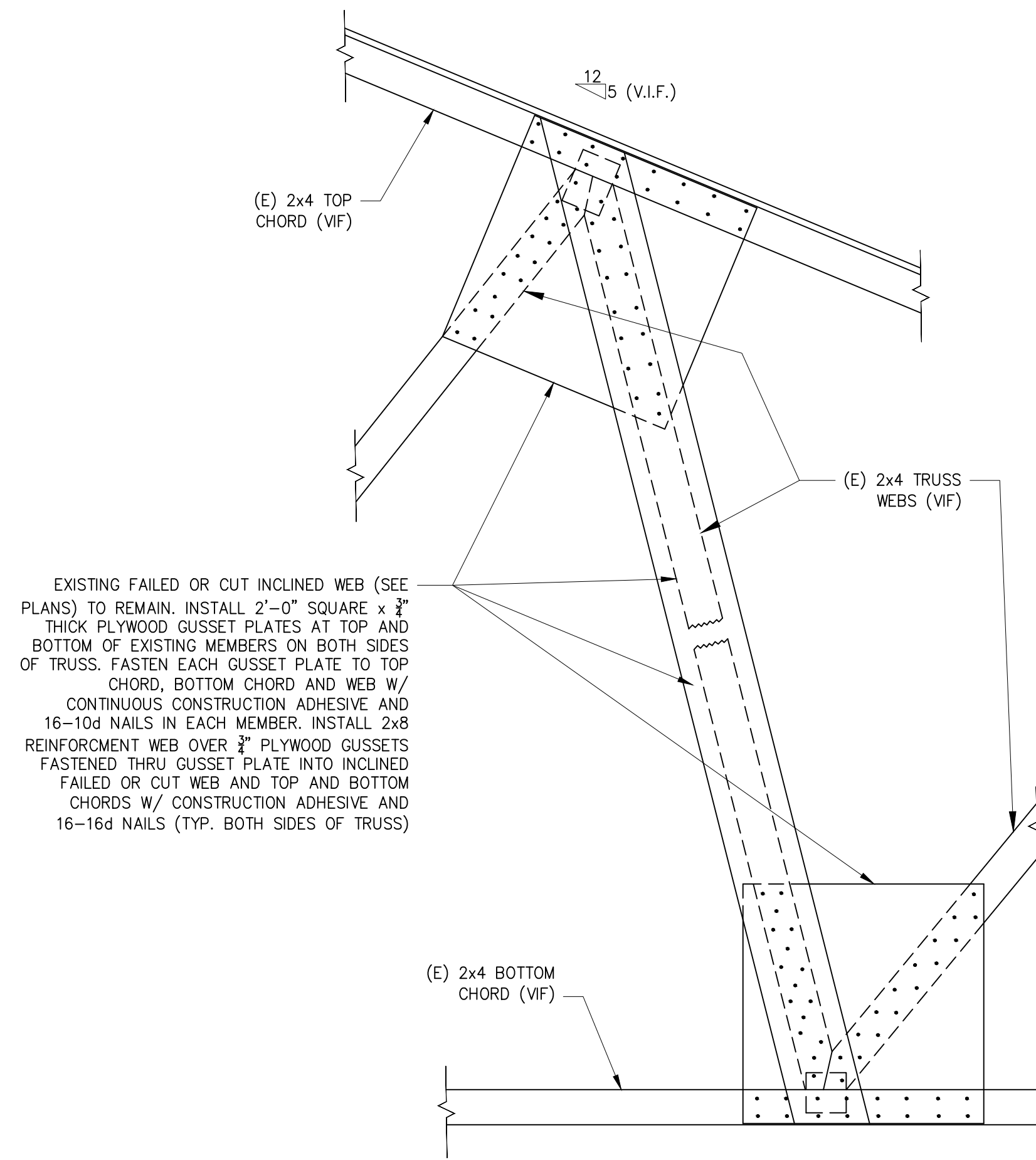


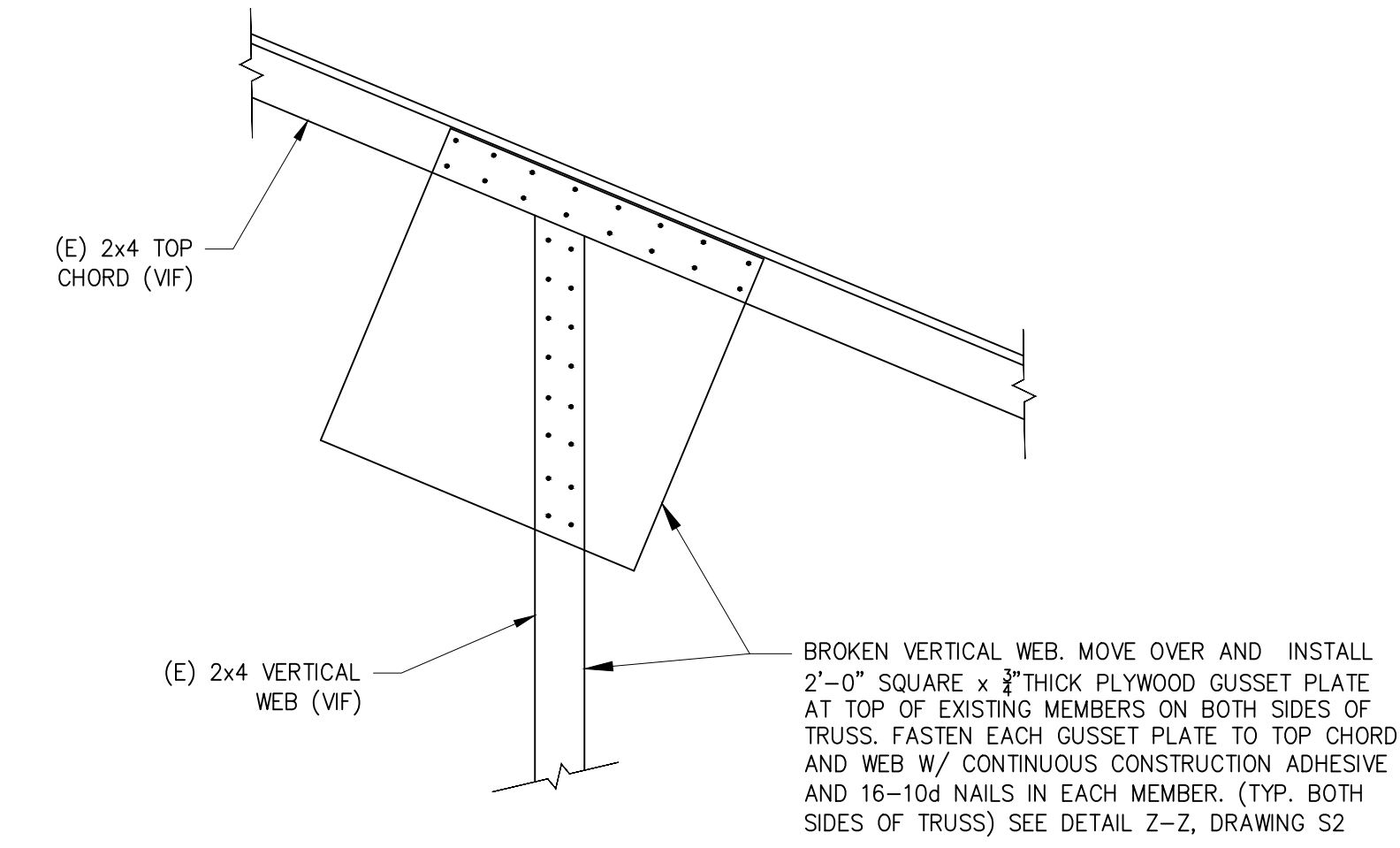
INCLINED WEB OF TRUSS MISSING. REPLACE W/ 2x6 TIGHT BETWEEN TOP AND BOTTOM CHORD AND TIGHT TO EXISTING WEB. PROVIDE 2'-0" SQUARE x 3/4" THICK PLYWOOD GUSSET PLATES AT TOP AND BOTTOM OF NEW MEMBER ON BOTH SIDES OF TRUSS. FASTEN EACH GUSSET PLATE TO TOP CHORD, BOTTOM CHORD AND WEB W/ CONTINUOUS CONSTRUCTION ADHESIVE AND 16-10d NAILS IN EACH MEMBER (TYP. BOTH SIDES OF TRUSS)

**MISSING TRUSS WEB REPLACEMENT DETAIL X-X**  
1" = 1'-0"



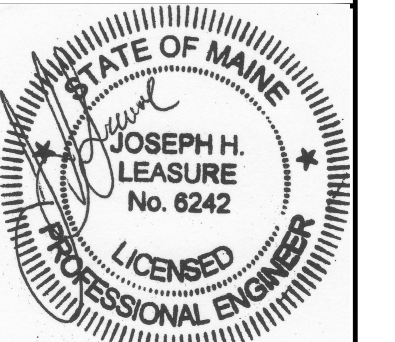
EXISTING FAILED OR CUT INCLINED WEB (SEE PLANS) TO REMAIN. INSTALL 2'-0" SQUARE x 3/4" THICK PLYWOOD GUSSET PLATES AT TOP AND BOTTOM OF EXISTING MEMBERS ON BOTH SIDES OF TRUSS. FASTEN EACH GUSSET PLATE TO TOP CHORD, BOTTOM CHORD AND WEB W/ CONTINUOUS CONSTRUCTION ADHESIVE AND 16-10d NAILS IN EACH MEMBER. INSTALL 2x8 REINFORCEMENT WEB OVER 3/4" PLYWOOD GUSSETS FASTENED THRU GUSSET PLATE INTO INCLINED FAILED OR CUT WEB AND TOP AND BOTTOM CHORDS W/ CONTINUOUS CONSTRUCTION ADHESIVE AND 16-16d NAILS (TYP. BOTH SIDES OF TRUSS)

**FAILED OR CUT TRUSS WEB REINFORCEMENT DETAIL Y-Y**  
1" = 1'-0"



**VERTICAL TRUSS WEB REPAIR DETAIL Z-Z**  
1" = 1'-0"

**NORTHFIELD GREEN - RENOVATIONS**  
3 STRATON PLACE  
PORTLAND, MAINE  
ROOF REINFORCEMENT  
TRUSS REINFORCEMENT/REPAIR DETAILS



rev.	date	description	drawn by	checked by	scale	date	plot date	project #
A	3/31/17	50% WSHA SUB-FOR PERMITS	JHL	JHL				
B	9/12/17	90% WSHA SUBMISSION	JHL	JHL				
0	11/22/17	FOR WSHA SUBMISSION FOR CONSTRUCTION	JHL	JHL				
	01/03/2017							
	11/22/2017							
								2016-076

**L & L STRUCTURAL ENGINEERING SERVICES, INC.**  
SIX O STREET  
SOUTH PORTLAND, MAINE 04106  
PHONE: (207) 767-4830  
FAX: (207) 799-5432  
EMAIL: JLEASURE@L-ENG.COM

**S5**

THESE DRAWINGS HAVE BEEN DEVELOPED BY L&L STRUCTURAL ENGINEERING SERVICES, INC. FOR THE TITLED SET ONLY. THE DRAWINGS ARE THE SOLE PROPERTY OF L&L ENGINEERING SERVICES, INC. AND THEY SHALL NOT BE USED, LENT, COPIED OR ALTERED WITHOUT THE WRITTEN CONSENT OF L&L STRUCTURAL ENGINEERING SERVICES, INC.