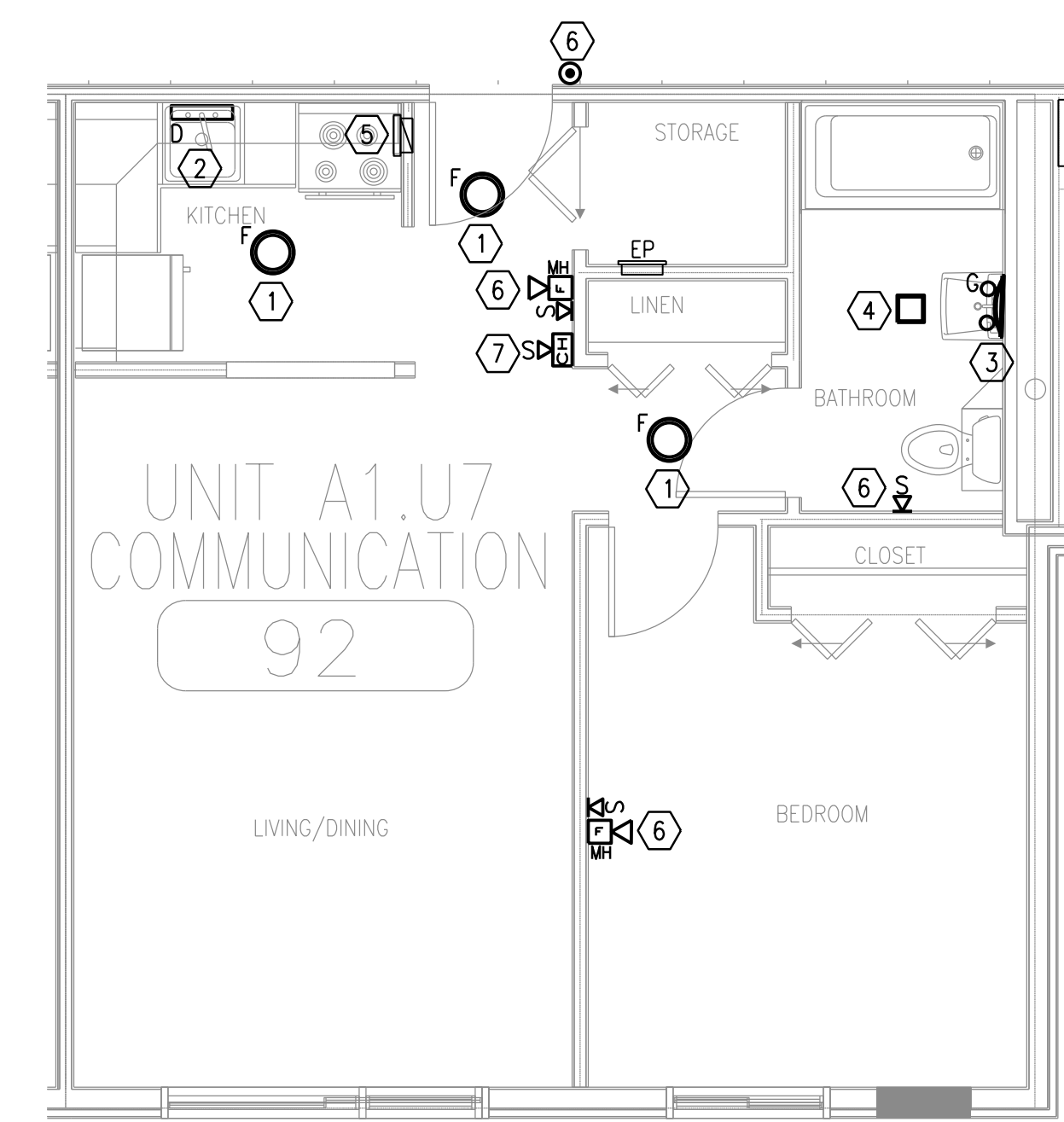


- ① REMOVE EXISTING LIGHT FIXTURE. INSTALL PROPOSED FIXTURE TYPE "F" IN THE SAME LOCATION. UTILIZE THE EXISTING SWITCHING
- ② REMOVE EXISTING LIGHT FIXTURE. INSTALL PROPOSED FIXTURE TYPE "D" IN THE SAME LOCATION.
- ③ REMOVE EXISTING LIGHT FIXTURE. INSTALL PROPOSED FIXTURE TYPE "G" IN THE SAME LOCATION. UTILIZE THE EXISTING SWITCHING.

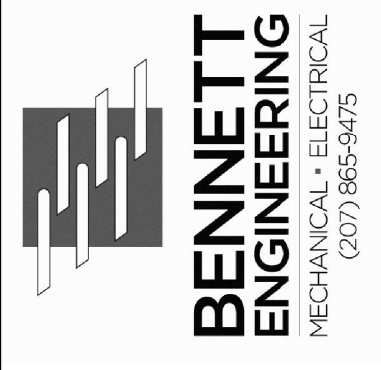
- ④ REMOVE POWER TO EXISTING EXHAUST FAN. POWER TO BE REMOVED COMPLETELY BACK TO THE SOURCE. REMOVE ANY SWITCHING ASSOCIATED WITH THE EXHAUST FAN. COVER OR REPAIR ANY REMAINING BOXES OR JUNCTION BOXES. OTHER DEVICES INCLUDED ON THE SAME CIRCUITRY SHALL REMAIN IN PLACE.
- ⑤ CONTRACTOR SHALL DISCONNECT POWER TO EXISTING SIDEWALL EXHAUST FAN LOCATED WITHIN THE KITCHEN. CONTRACTOR SHALL EXTEND POWER FROM EXISTING SWITCH THAT CONTROLLED SIDEWALL FAN TO NEW CIRCULATION FAN LOCATED WITH THE ATTIC SPACE. COORDINATE WITH MECHANICAL CONTRACTOR FOR EXACT LOCATION OF EACH FAN LOCATED WITHIN THE ATTIC SPACE.

- ⑥ FIRE ALARM DEVICES SHALL BE UPGRADED TO COMPLY WITH COMMUNICATION UNITS. MINI HORNS AND STROBES WITHIN THE LIVING SPACES AND BEDROOMS. STROBES TO BE INSTALLED WITHIN THE BATHROOM.
- ⑦ PROVIDE DOORBELL PUSH BUTTON AND CHIME WITH VISUAL STROBE FOR ALL COMMUNICATION UNITS. COORDINATE EXACT LOCATION OF DOORBELL AND CHIME/STROBE WITH OWNER PRIOR TO INSTALLATION.



UNIT TYPE A1.U7 POWER AND LIGHTING PLAN
 SCALE - 1/4" = 1'-0"

DESIGNER



OWNER

NORTHFIELD GREEN HOUSING PARTNERS LP.
 307 CUMBERLAND AVE
 PORTLAND, MAINE 04101

PROJECT

NORTHFIELD GREEN
 ALLEN AVENUE
 PORTLAND, MAINE 04101

DRAWING

TYPICAL UNIT LIGHTING AND POWER PLANS
 CWS PROJECT NUMBER: 16.010

REVISIONS

1	PROGRESS PRINT				
	NOT FOR CONSTRUCTION				

DRAWING NUMBER
E2.02
 SCALE: 1/4" = 1'-0"
 DATE: 11/21/2017