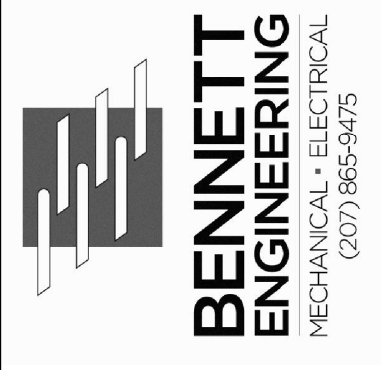


- ① REMOVE EXISTING LIGHT FIXTURE, INSTALL PROPOSED FIXTURE TYPE "F" IN THE SAME LOCATION. UTILIZE THE EXISTING SWITCHING
- ② REMOVE EXISTING LIGHT FIXTURE, INSTALL PROPOSED FIXTURE TYPE "D" IN THE SAME LOCATION.
- ③ REMOVE EXISTING LIGHT FIXTURE, INSTALL PROPOSED FIXTURE TYPE "G" IN THE SAME LOCATION. UTILIZE THE EXISTING SWITCHING.

- ④ REMOVE POWER TO EXISTING EXHAUST FAN. POWER TO BE REMOVED COMPLETELY BACK TO THE SOURCE. REMOVE ANY SWITCHING ASSOCIATED WITH THE EXHAUST FAN. COVER OR REPAIR ANY REMAINING BOXES OR JUNCTION BOXES. OTHER DEVICES INCLUDED ON THE SAME CIRCUITRY SHALL REMAIN IN PLACE.
- ⑤ CONTRACTOR SHALL DISCONNECT POWER TO EXISTING SIDEWALL EXHAUST FAN LOCATED WITHIN THE KITCHEN. CONTRACTOR SHALL EXTEND POWER FROM EXISTING SWITCH THAT CONTROLLED SIDEWALL FAN TO NEW CIRCULATION FAN LOCATED WITH THE ATTIC SPACE. COORDINATE WITH MECHANICAL CONTRACTOR FOR EXACT LOCATION OF EACH FAN LOCATED WITHIN THE ATTIC SPACE.

- ⑥ FIRE ALARM DEVICES SHALL BE UPGRADED TO COMPLY WITHIN COMMUNICATION UNITS, MINI HORNS AND STROBES WITHIN THE LIVING SPACES AND BEDROOMS. STROBES TO BE INSTALLED WITHIN THE BATHROOM.
- ⑦ RE-USE EXISTING FAN SWITCH LOCATION FOR NEW EXHAUST FAN. SWITCH SHALL BE REPLACED WITH LIGHTED SWITCH, TO IDENTIFY WHEN FAN IS ON. SWITCH LOCATION SHOULD BE 48" AFF OR LOWER.

DESIGNER



OWNER

**NORTHFIELD GREEN HOUSING PARTNERS LP.**  
307 CUMBERLAND AVE  
PORTLAND, MAINE 04101

PROJECT

**NORTHFIELD GREEN**  
ALLEN AVENUE  
PORTLAND, MAINE 04101

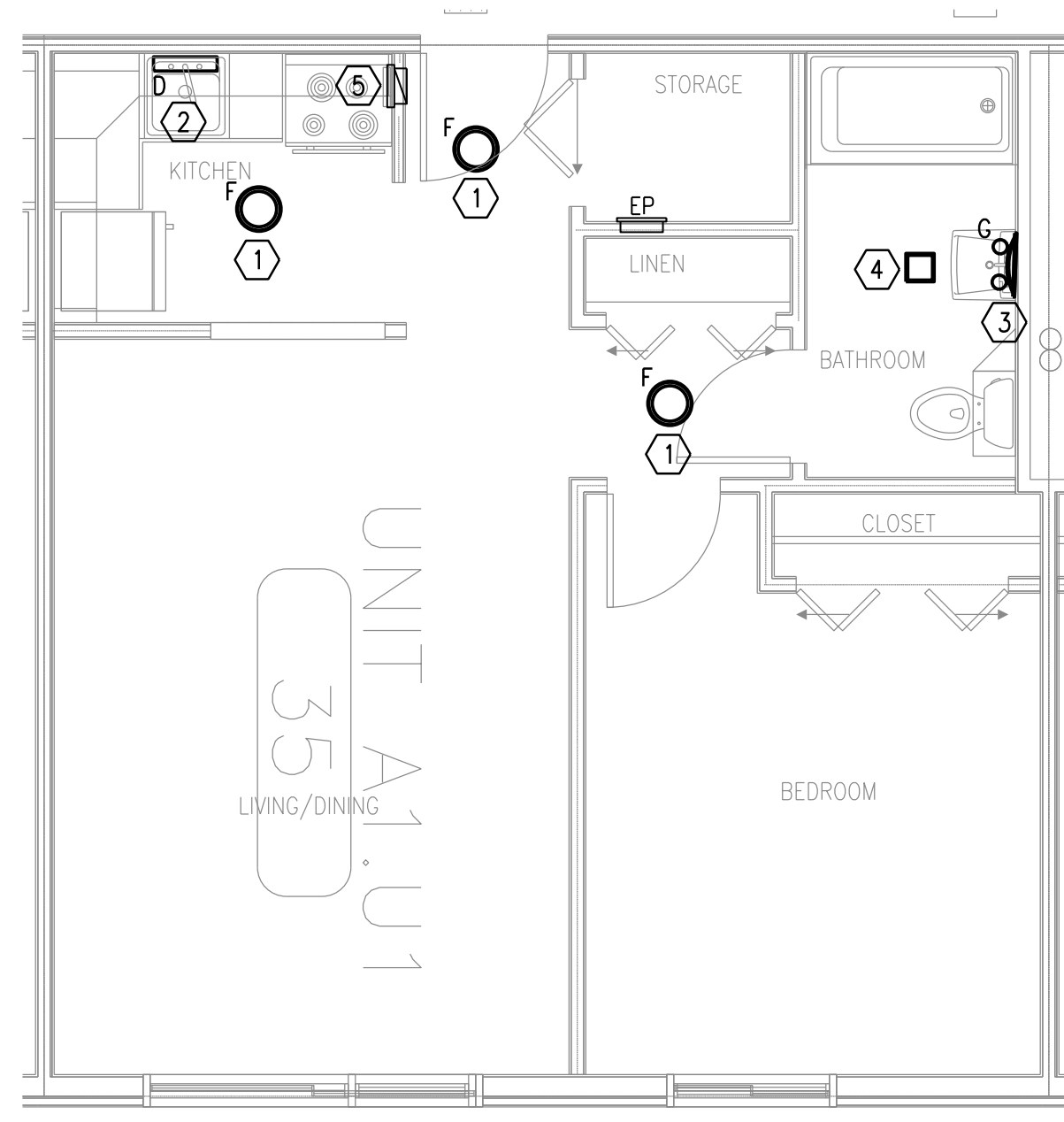
DRAWING

**TYPICAL UNIT LIGHTING AND POWER PLANS**  
CWS PROJECT NUMBER: 16.010

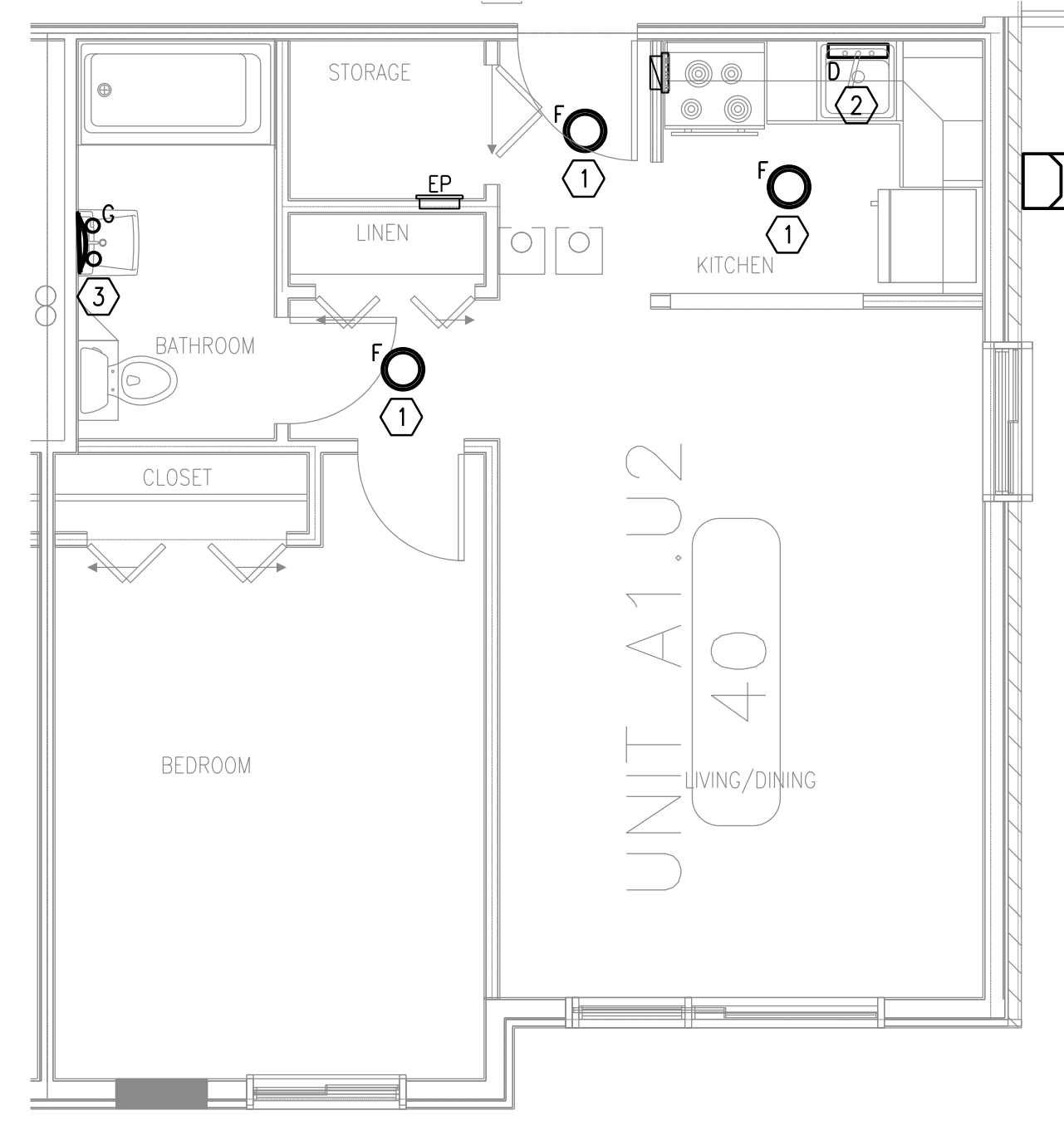
REVISIONS

PROGRESS PRINT NOT FOR CONSTRUCTION				

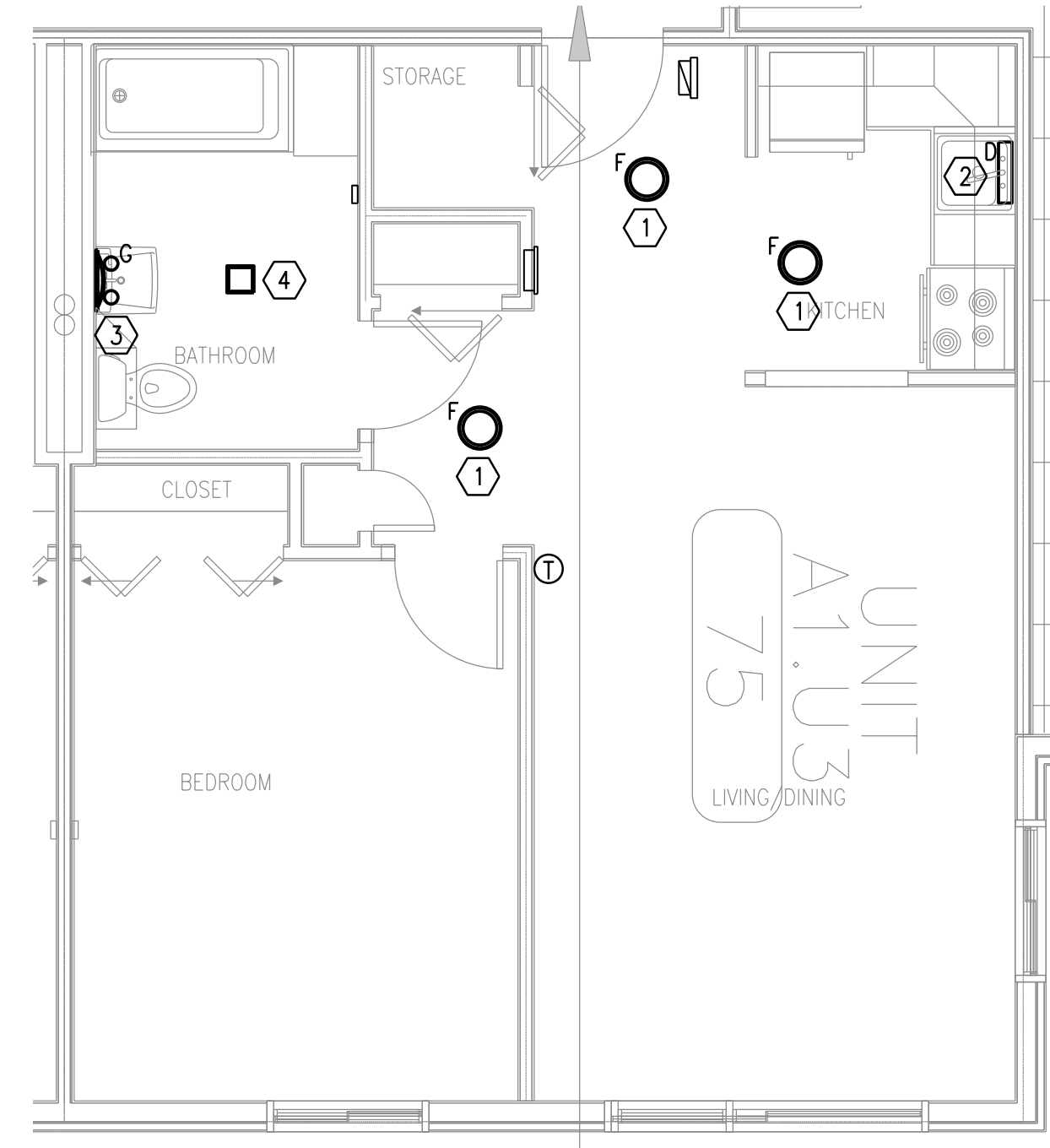
DRAWING NUMBER  
**E2.01**  
SCALE: 1/4" = 1'-0"  
DATE: 11/21/2017



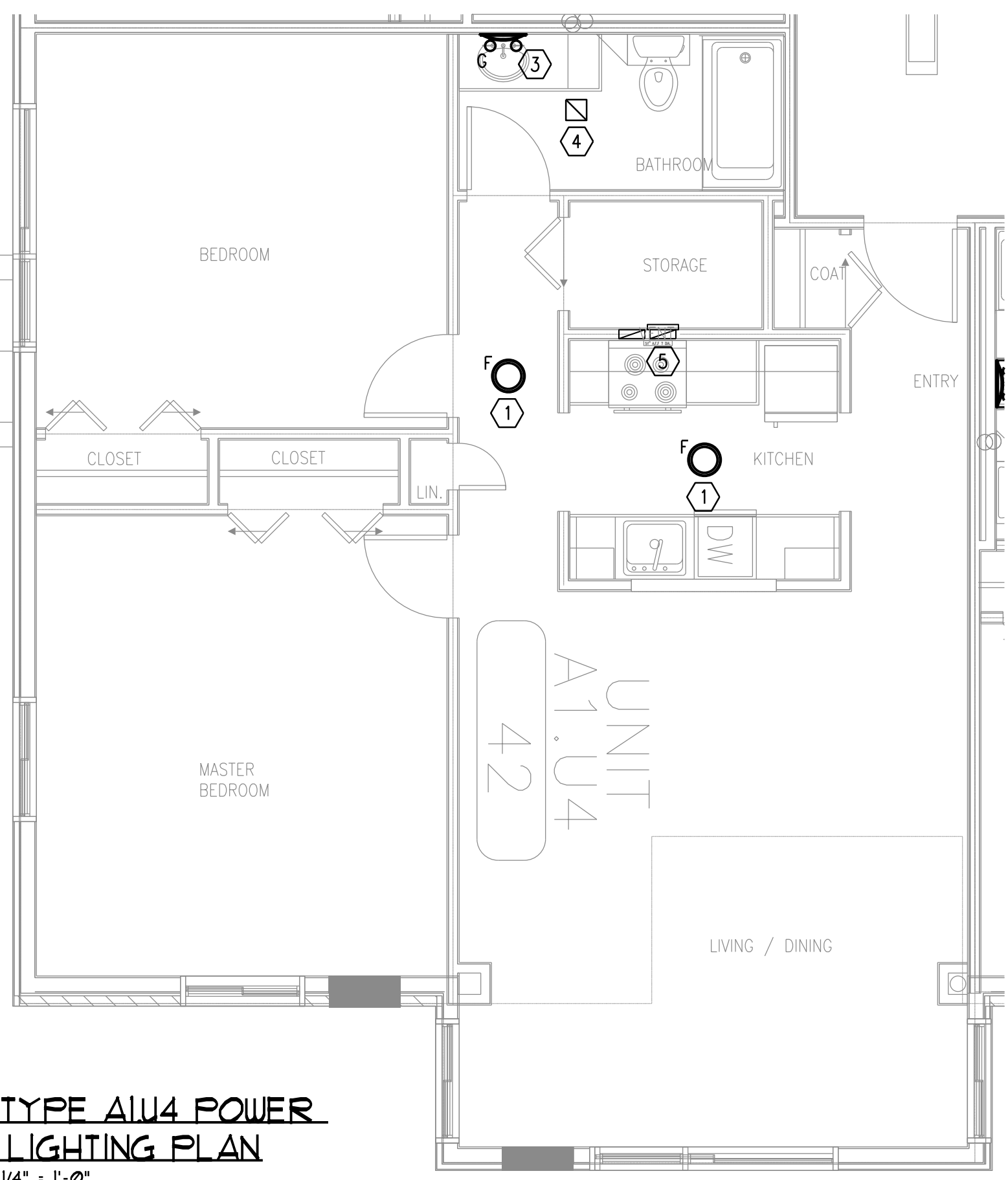
**UNIT TYPE A1.U1 POWER AND LIGHTING PLAN**  
SCALE - 1/4" = 1'-0"



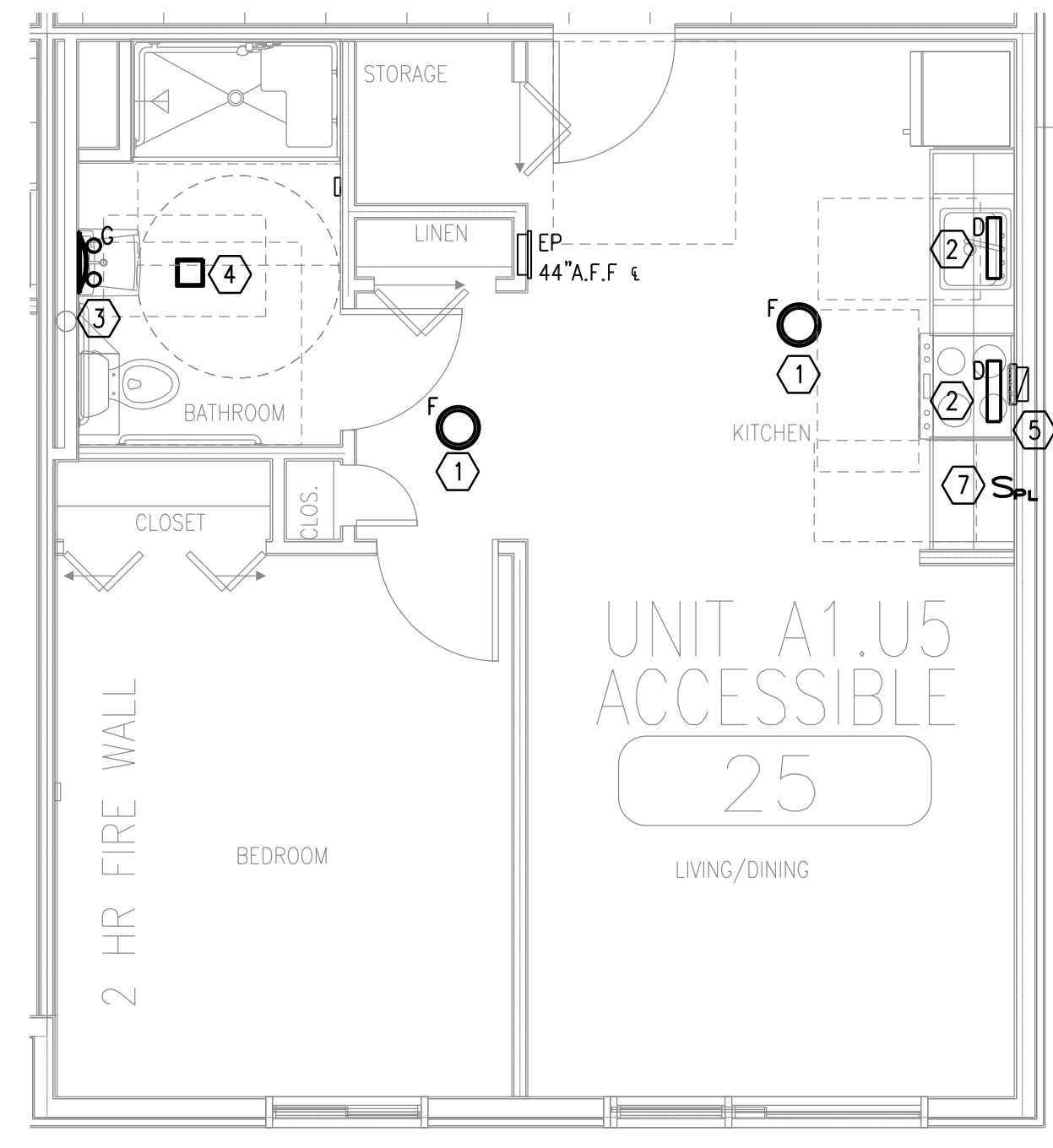
**UNIT TYPE A1.U2 POWER AND LIGHTING PLAN**  
SCALE - 1/4" = 1'-0"



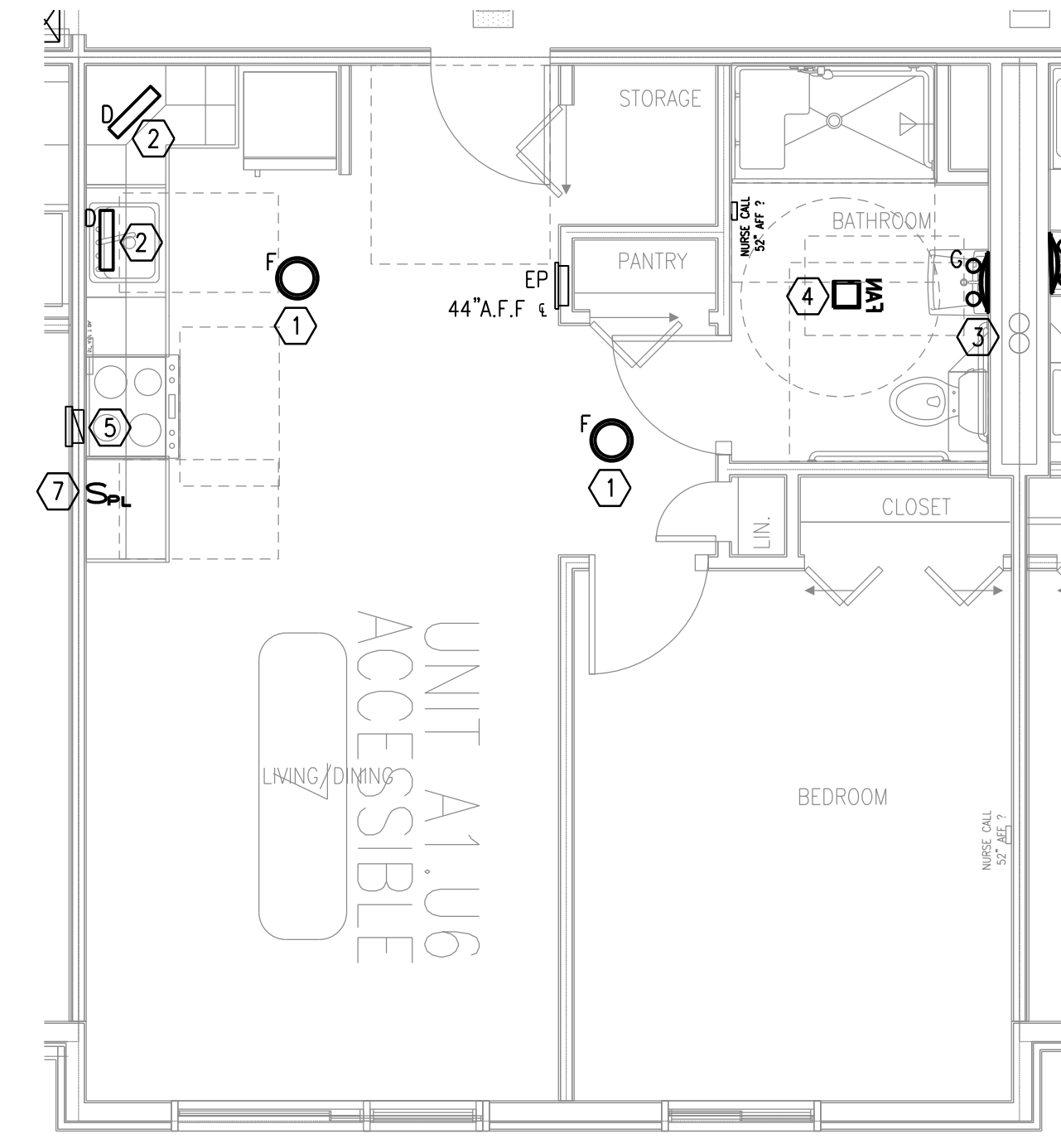
**UNIT TYPE A1.U3 POWER AND LIGHTING PLAN**  
SCALE - 1/4" = 1'-0"



**UNIT TYPE A1.U4 POWER AND LIGHTING PLAN**  
SCALE - 1/4" = 1'-0"



**UNIT TYPE A1.U5 POWER AND LIGHTING PLAN**  
SCALE - 1/4" = 1'-0"



**UNIT TYPE A1.U6 POWER AND LIGHTING PLAN**  
SCALE - 1/4" = 1'-0"