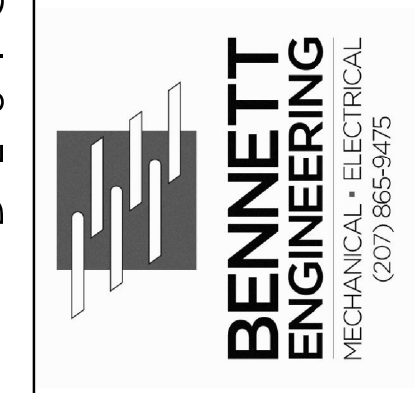


DESIGNER



OWNER

NORTHFIELD GREEN HOUSING PARTNERS LP.

307 CUMBERLAND AVE
PORTLAND, MAINE 04101

PROJECT

NORTHFIELD GREEN

DRAWING

BUILDING 151 FIRST FLOOR ELECTRICAL PLAN

ALLEN AVENUE
PORTLAND, MAINE 04101
CWS PROJECT NUMBER: 16.010

REVISIONS

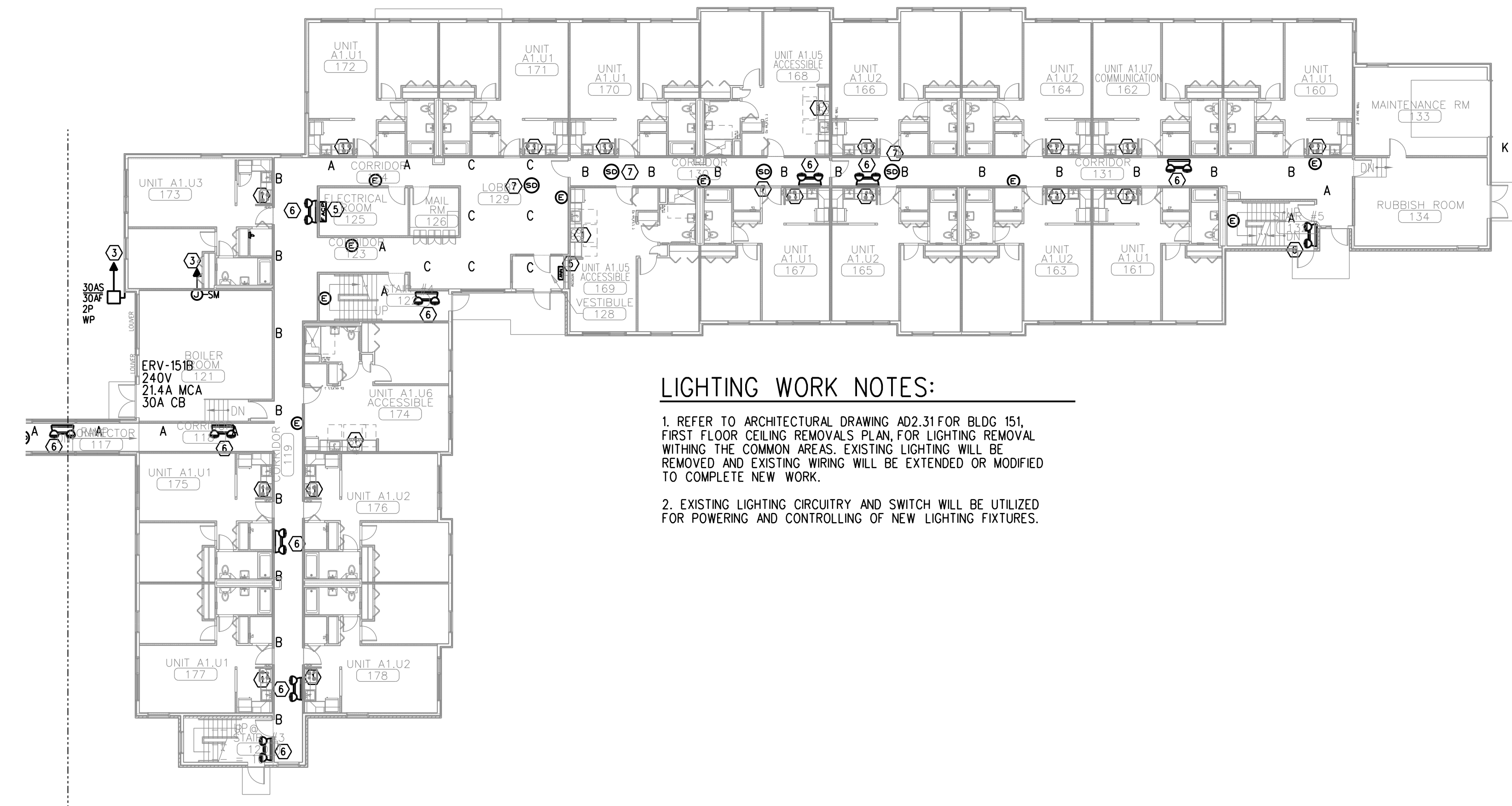
PROGRESS PRINT
NOT FOR CONSTRUCTION

DRAWING NUMBER

E1.21

SCALE: 1/16" = 1'-0"
DATE: 11/21/2017

100% SUBMISSION



LIGHTING WORK NOTES:

1. REFER TO ARCHITECTURAL DRAWING AD2.31 FOR BLDG 151, FIRST FLOOR CEILING REMOVALS PLAN, FOR LIGHTING REMOVAL WITHIN THE COMMON AREAS. EXISTING LIGHTING WILL BE REMOVED AND EXISTING WIRING WILL BE EXTENDED OR MODIFIED TO COMPLETE NEW WORK.
2. EXISTING LIGHTING CIRCUITRY AND SWITCH WILL BE UTILIZED FOR POWERING AND CONTROLLING OF NEW LIGHTING FIXTURES.

POWER WORK NOTES

1. PROVIDE POWER TO NEW CIRCULATION FAN, TO BE LOCATED WITHIN THE ATTIC SPACE. COORDINATE WITH MECH CONTRACTOR. POWER TO COME FROM NEW 15A SINGLE POLE CIRCUIT BREAKER WITH IN EXISTING LOAD CENTER IN ASSOCIATED APARTMENT. ELECTRICAL CONTRACTOR TO WIRE FAN TO SWITCH LOCATED WITH APARTMENT KITCHEN, COORDINATE SWITCH WITH ARCHITECT/OWNER PRIOR TO ROUGH IN.
2. APPROXIMATE LOCATIONS WITH ATTIC SPACE OF CIRCULATION FANS. COORDINATE FINAL LOCATIONS WITH MECHANICAL CONTRACTOR PRIOR TO ROUGH IN OF ELECTRICAL CONNECTIONS.
3. PROVIDE POWER TO NEW CONDENSER UNITS FROM NEW 30A 2-POLE CIRCUIT BREAKER IN EXISTING BUILDING HOUSE PANEL.
4. PROVIDE POWER TO NEW BOILER EQUIPMENT FROM EXISTING BOILER CIRCUITS.
5. FIRE ALARM CONTROL PANEL AND ANNUNCIATOR PANEL UPGRADE. EXISTING FACP, SIMPLEX 4005 ZONE PANELS ARE TO BE UPGRADED TO SIMPLEX 4007/4007 HYBRID PANELS WITH ASSOCIATED ANNUNCIATOR PANELS. ALL WORK SHALL BE COORDINATED THROUGH KEN FLOURDE WITH SIMPLEX GRINNELL, 30 THOMAS DR, WESTBROOK, ME 207-749-6726. EXISTING FIRE ALARM ZONES SHALL BE RECONNECTED TO NEW FACP. THE INTENT IS TO GIVE THE OWNER THE ABILITY TO UPGRADE THE FIRE ALARM DEVICES TO ADDRESSABLE DEVICES IN THE FUTURE.
6. PROVIDE NEW EMERGENCY EGRESS LIGHTS WITHIN CORRIDORS AND COMMON SPACES. CONNECT NEW LIGHTS TO EXISTING EMERGENCY EGRESS CIRCUIT.
7. PROVIDE SMOKE DETECTORS ON BOTH SIDES OF FIRE DOORS WITHIN COMMON CORRIDORS. FIELD VERIFY EXISTING SMOKE DETECTORS. NEW DETECTORS SHALL BE ADDED ON TO EXISTING FIRE ALARM ZONE LOOP. COORDINATE WITH KEN FLOURDE AT SIMPLEX GRINNELL.

