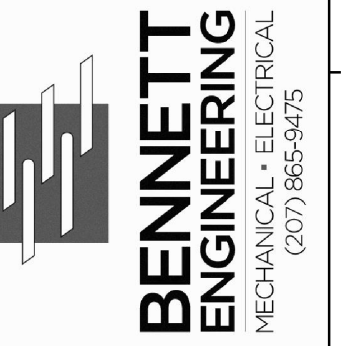


DESIGNER



OWNER

NORTHFIELD GREEN HOUSING PARTNERS LP.

307 CUMBERLAND AVE  
PORTLAND, MAINE 04101

PROJECT

NORTHFIELD GREEN

ALLEN AVENUE  
PORTLAND, MAINE 04101

DRAWING

BUILDING 149  
SECOND FLOOR  
ELECTRICAL PLAN

CWS PROJECT NUMBER: 16.010

REVISIONS

PROGRESS PRINT  
NOT FOR CONSTRUCTION

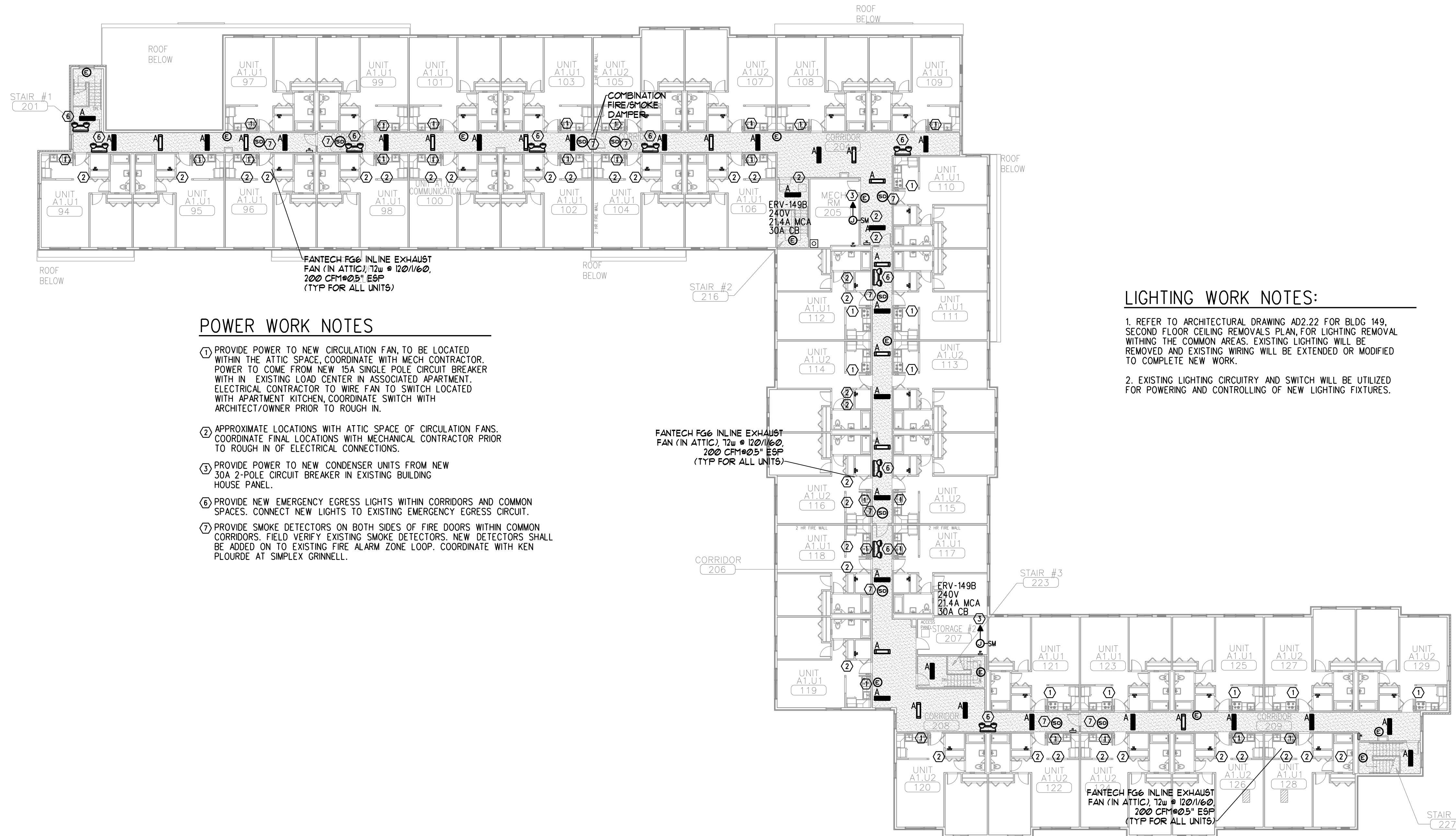
DRAWING NUMBER

E1.12

SCALE: 1/16" = 1'-0"

DATE: 11/21/2017

100% SUBMISSION



**POWER WORK NOTES**

- ① PROVIDE POWER TO NEW CIRCULATION FAN TO BE LOCATED WITHIN THE ATTIC SPACE, COORDINATE WITH MECH CONTRACTOR. POWER TO COME FROM NEW 15A SINGLE POLE CIRCUIT BREAKER WITH IN EXISTING LOAD CENTER IN ASSOCIATED APARTMENT. ELECTRICAL CONTRACTOR TO WIRE FAN TO SWITCH LOCATED WITH APARTMENT KITCHEN, COORDINATE SWITCH WITH ARCHITECT/OWNER PRIOR TO ROUGH IN.
- ② APPROXIMATE LOCATIONS WITH ATTIC SPACE OF CIRCULATION FANS. COORDINATE FINAL LOCATIONS WITH MECHANICAL CONTRACTOR PRIOR TO ROUGH IN OF ELECTRICAL CONNECTIONS.
- ③ PROVIDE POWER TO NEW CONDENSER UNITS FROM NEW 30A 2-POLE CIRCUIT BREAKER IN EXISTING BUILDING HOUSE PANEL.
- ④ PROVIDE NEW EMERGENCY EGRESS LIGHTS WITHIN CORRIDORS AND COMMON SPACES. CONNECT NEW LIGHTS TO EXISTING EMERGENCY EGRESS CIRCUIT.
- ⑤ PROVIDE SMOKE DETECTORS ON BOTH SIDES OF FIRE DOORS WITHIN COMMON CORRIDORS. FIELD VERIFY EXISTING SMOKE DETECTORS. NEW DETECTORS SHALL BE ADDED ON TO EXISTING FIRE ALARM ZONE LOOP. COORDINATE WITH KEN PLOURDE AT SIMPLEX GRINNELL.

**LIGHTING WORK NOTES:**

- 1. REFER TO ARCHITECTURAL DRAWING AD2.22 FOR BLDG 149, SECOND FLOOR CEILING REMOVALS PLAN, FOR LIGHTING REMOVAL WITHIN THE COMMON AREAS. EXISTING LIGHTING WILL BE REMOVED AND EXISTING WIRING WILL BE EXTENDED OR MODIFIED TO COMPLETE NEW WORK.
- 2. EXISTING LIGHTING CIRCUITRY AND SWITCH WILL BE UTILIZED FOR POWERING AND CONTROLLING OF NEW LIGHTING FIXTURES.