



CWS ARCHITECTS
ARCHITECTURE | INTERIOR DESIGN
434 CUMBERLAND AVENUE
PORTLAND, MAINE 04101
T: 207.774.4441
F: 207.774.4016
WWW.CWSARCH.COM

DESIGNER

OWNER
NORTHFIELD GREEN
HOUSING PARTNERS LP.

ONE CITY CENTER, 4TH FLOOR
PORTLAND, MAINE 04101

PROJECT
NORTHFIELD GREEN

147 - 151 ALLEN AVENUE
PORTLAND, MAINE 04101

DRAWING
WALL SECTIONS

CWS PROJECT NUMBER: 16.010

REVISIONS

NO.	DESCRIPTION

DRAWING NUMBER

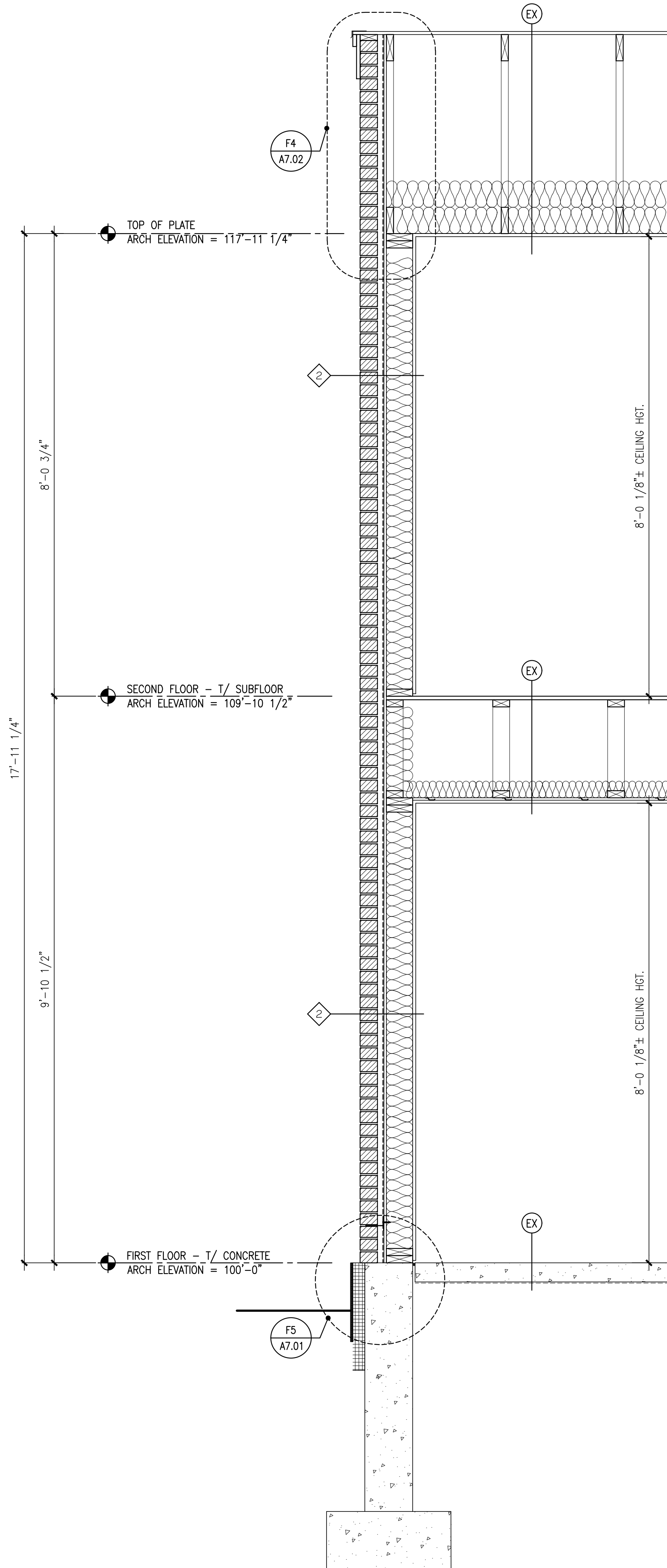
A6.02

SCALE: AS NOTED

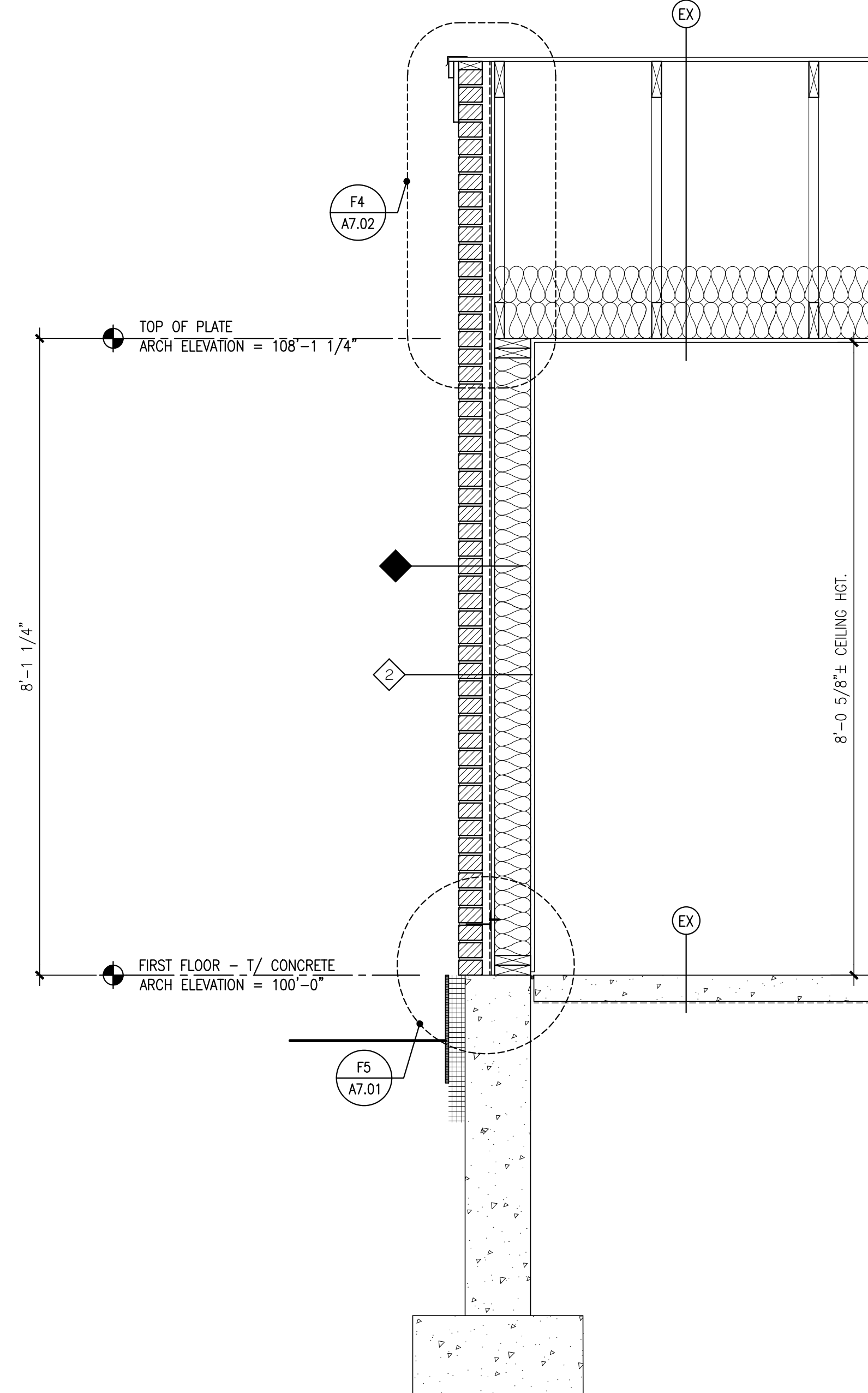
DATE: 11/22/2017

ISSUED NOVEMBER 22, 2017

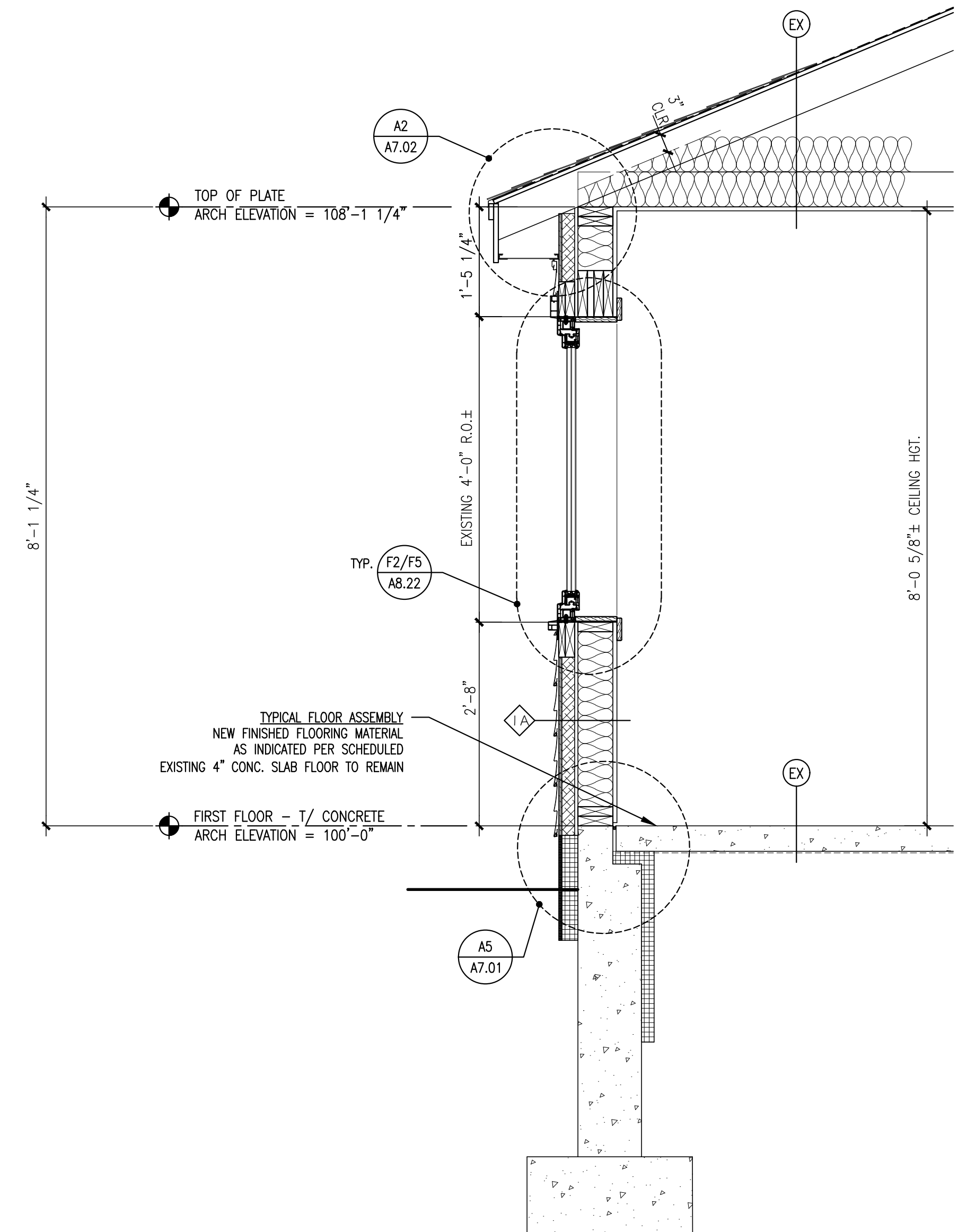
NOTE: WALL SECTIONS ILLUSTRATE BASE BID SCOPE, REGARDING DEDUCT ALTERNATE No.7.:
EXISTING VINYL SIDING AND TRIM REMAIN IN PLACE (NO NEW EXTERIOR INSULATION,
RETROFOAM, OR VINYL SIDING.)
PROVIDE NEW PVC WINDOW TRIM (SEE ALT DETAILS C2, C4, AND C5/A8.22).
PROVIDE WATER TABLE TRIM AND FLASHING OVER FOUNDATION INSULATION (SEE ALT DETAIL
F2/A7.01).
INFILL VINYL SIDING (WINDOW TO WINDOW, OR WINDOW TO CORNER) AT AIR CONDITIONER
SLEEVE INFILL LOCATIONS (SEE BUILDING ELEVATIONS PLANS AND DETAIL F4/A7.01).



A5 WALL SECTION D
REFERENCED FROM: SCALE: 3/4" = 1'-0"



C5 WALL SECTION E
REFERENCED FROM: SCALE: 3/4" = 1'-0"



E5 WALL SECTION F
REFERENCED FROM: SCALE: 3/4" = 1'-0"

© 2017 CWS Architects, Inc. All rights reserved. No part of this drawing may be reproduced without the written consent of CWS Architects, Inc.