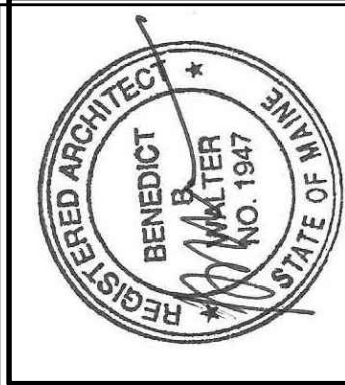


REFLECTED CEILING LEGEND:

- |                 |  |
|-----------------|--|
| NAME<br>NMBR    | ROOM TAG   |
| GWB_PO<br>8'-0" | CEILING TAG:<br>TOP: CEILING FINISH, INCLUDING PAINT COLOR (IF APPLICABLE)<br>BOTTOM: CEILING HEIGHT A.F.F.              |
|                 | NEW 2x2 SUSPENDED ACOUSTICAL TILE<br>CEILING SYSTEM, REFERENCE ALTERNATE #4  |
|                 | GWB CEILING, EXISTING TO REMAIN  |
|                 | GWB CEILING, PATCH EXISTING LIGHT FIXTURE/<br>SKYLIGHT, OR REMOVED CEILING AREA TO MATCH<br>ADJACENT SURFACES            |
|                 | 2x2 RECESSED LED FIXTURE, REFERENCE<br>ELECTRICAL DOCUMENTS.   |
|                 | NEW 1x4 SURFACE MOUNTED FIXTURE, LOCATION SHALL<br>REPLACE EXISTING FIXTURE LOCATION. REFERENCE<br>ELECTRICAL DOCUMENTS. |
|                 | 1x4 SURFACE MOUNTED FIXTURE, REFERENCE<br>ELECTRICAL DOCUMENTS.  |
|                 | 2x4 RECESSED FIXTURE, REFERENCE<br>ELECTRICAL DOCUMENTS.   |
|                 | SURFACE MOUNTED CEILING FIXTURE.<br>REFERENCE ELECTRICAL DOCUMENTS.  |
|                 | WALL MOUNTED VANITY LIGHT FIXTURE,<br>REFERENCE ELECTRICAL DOCUMENTS.  |
|                 | EXISTING TO REMAIN ACCESS PANEL  |
|                 | EXISTING RELOCATED CEILING FAN   |

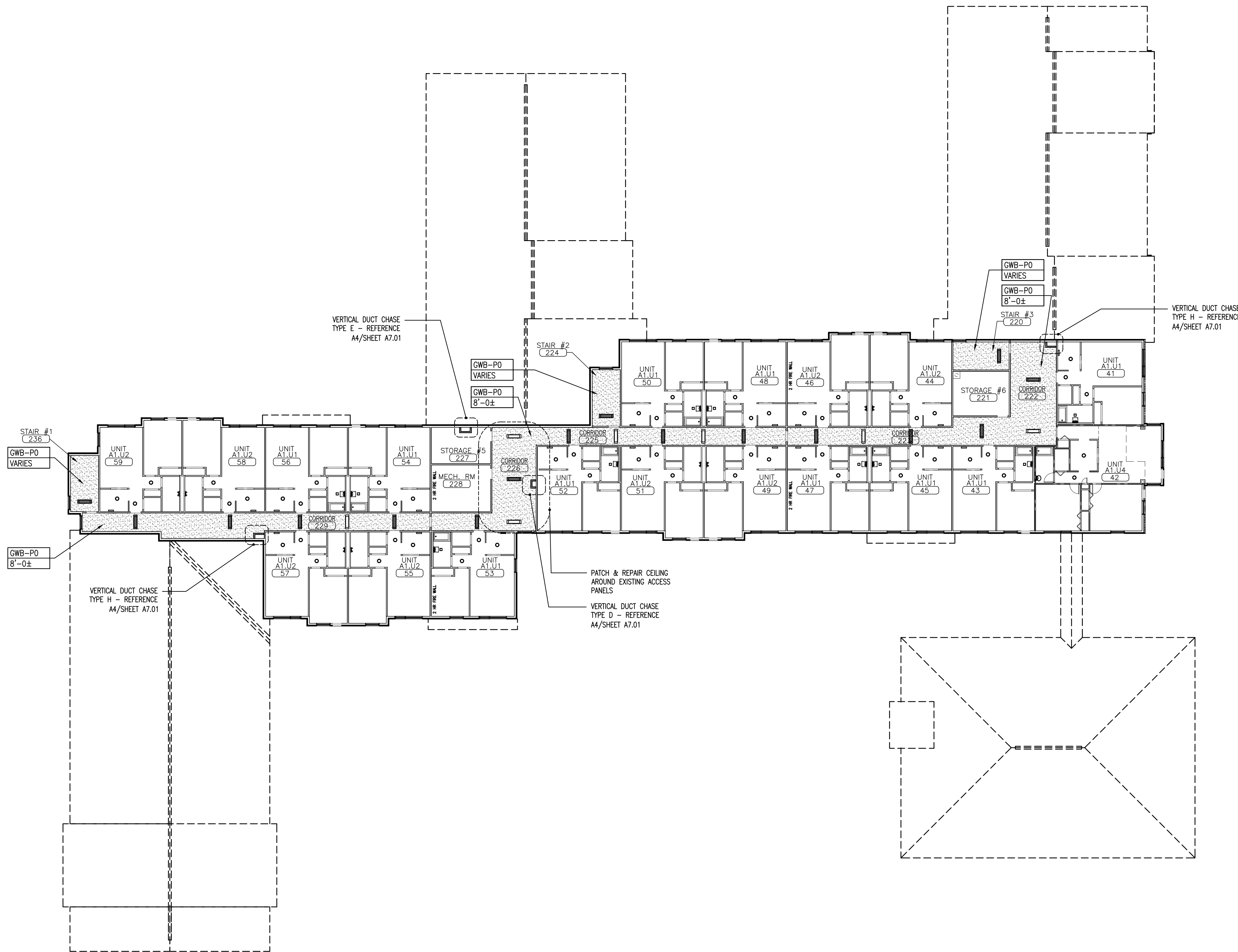
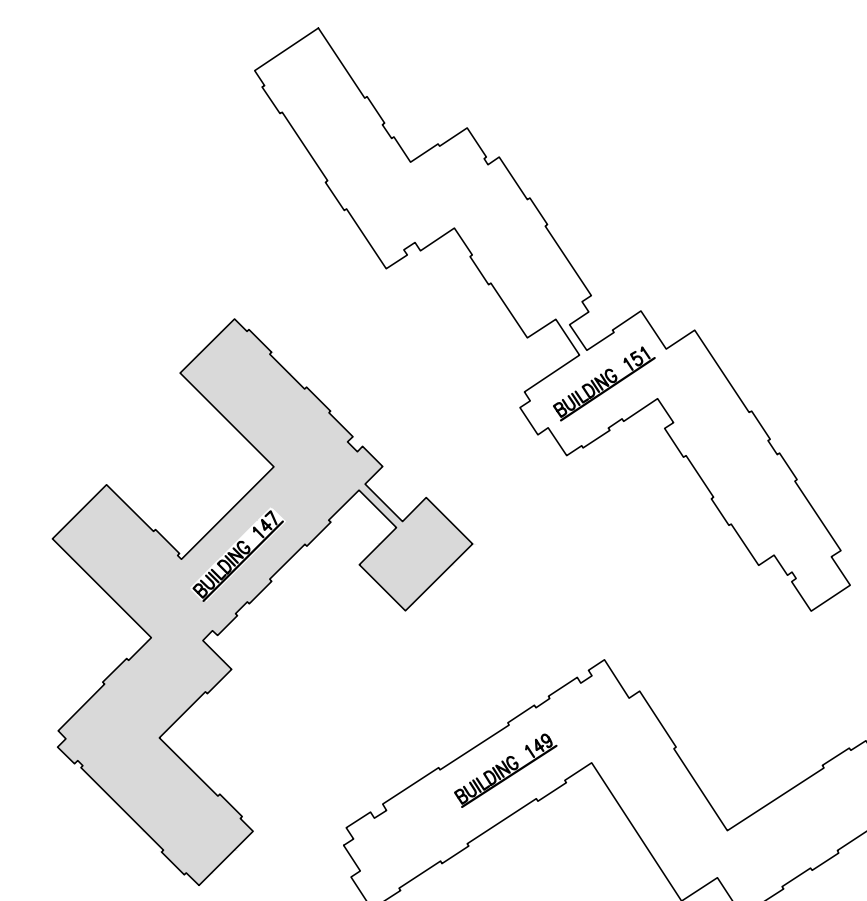


REVISIONS

NO.	DATE	DESCRIPTION

**G5** KEY PLAN AND RCP LEGEND

REFERENCED FROM: PLANS SCALE: NTS



**A5** BUILDING NO. 147 - SECOND FLOOR REFLECTED CEILING PLAN

REFERENCED FROM: TP2 SCALE: 1/16" = 1'-0"