

CWS ARCHITECTS
ARCHITECTURE | INTERIOR DESIGN
434 CUMBERLAND AVENUE
PORTLAND, MAINE 04101
T: 207.774.4441
F: 207.774.4016
WWW.CWSARCH.COM

OWNER
NORTHFIELD GREEN
HOUSING PARTNERS LP.
ONE CITY CENTER, 4TH FLOOR
PORTLAND, MAINE 04101

PROJECT
NORTHFIELD GREEN
147 - 1ST ALLEN AVENUE
PORTLAND, MAINE 04101

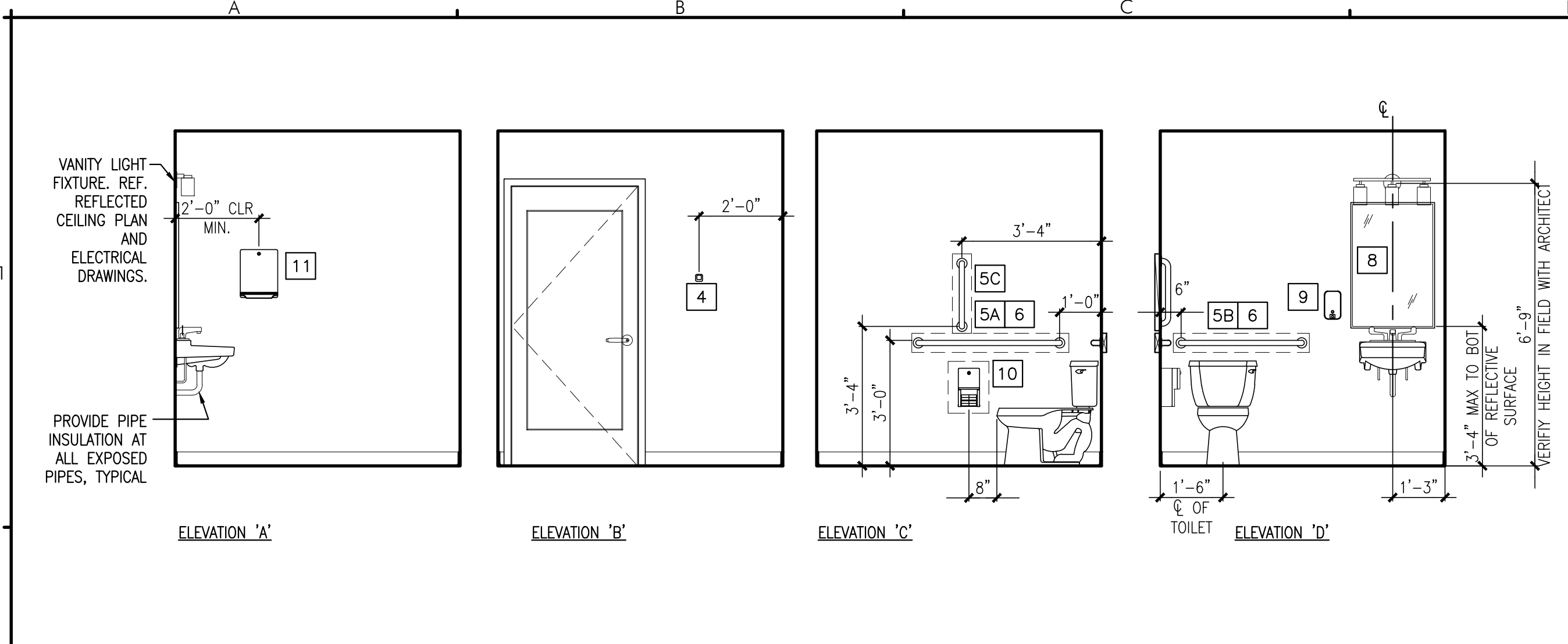
DRAWING
UNIT PLAN -
1 BEDROOM
ACCESSIBLE
CWS PROJECT NUMBER: 16.010

REVISIONS

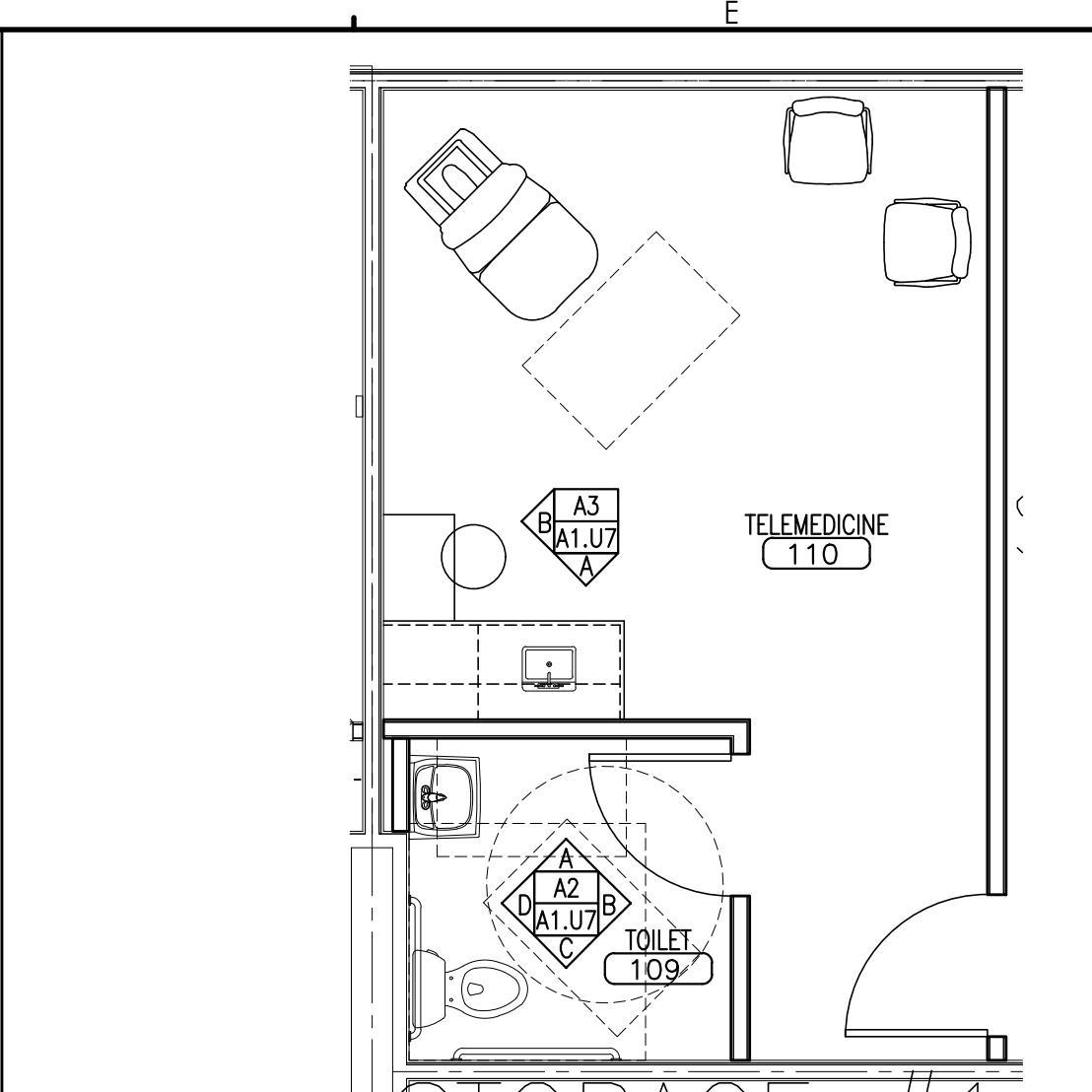
NO.	DATE	DESCRIPTION

DRAWING NUMBER
A1.U7

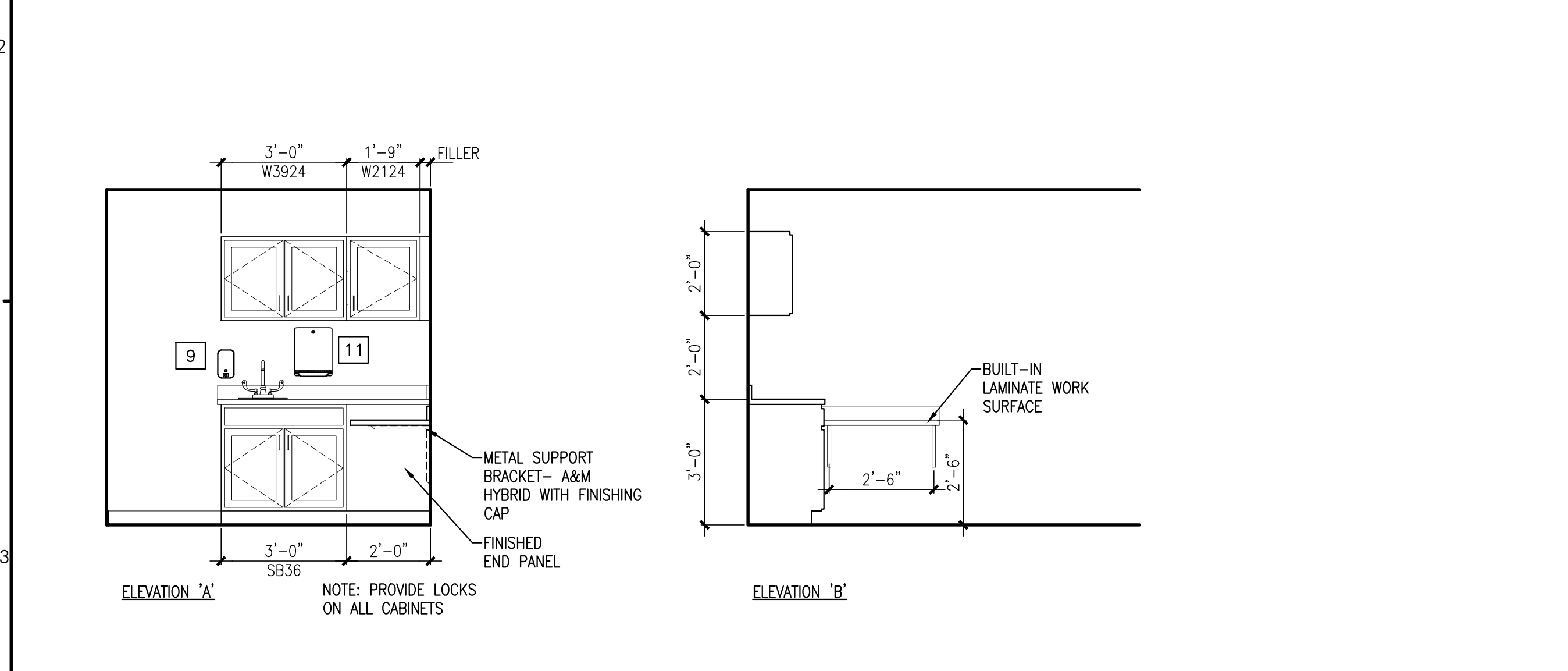
SCALE: AS NOTED
DATE: 11/22/2017



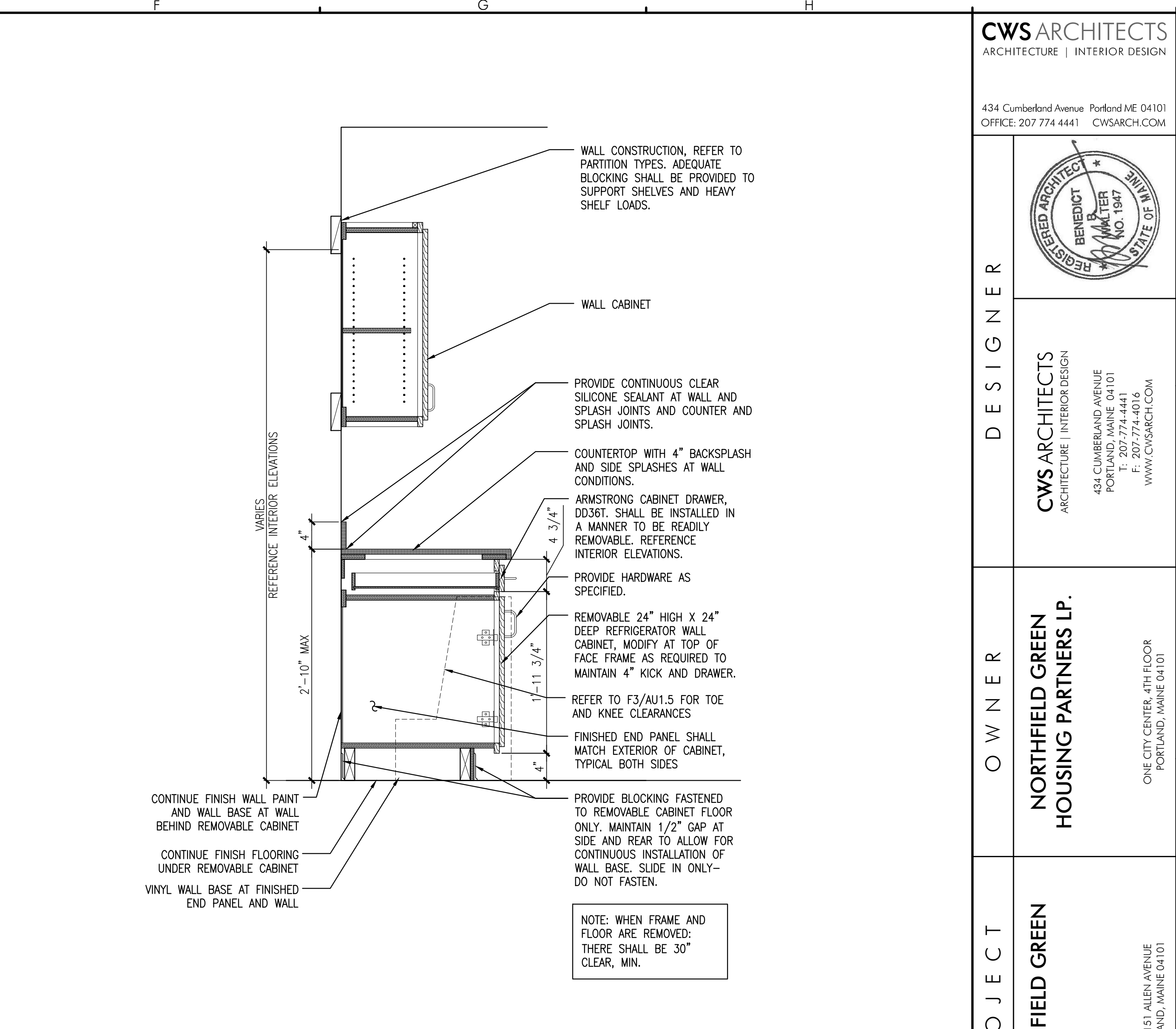
A2 TELEMEDICINE TOILET ROOM ELEVATION
REFERENCED FROM: FIRST FLOOR BUILDING 151 (A1.31)



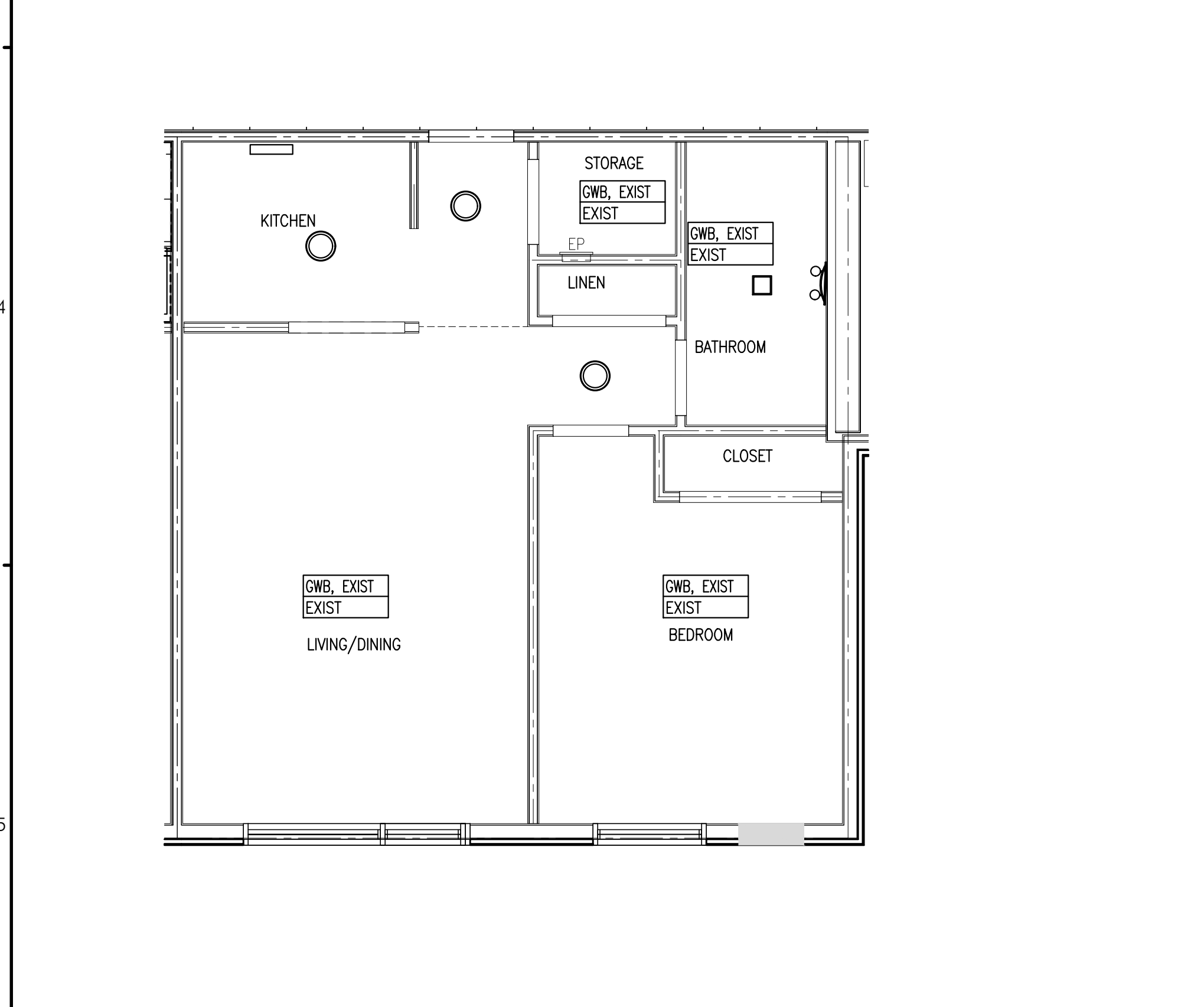
D2 TELEMEDICINE AND TOILET PARTIAL PLAN
REFERENCED FROM: FIRST FLOOR BUILDING 151 (A1.31)



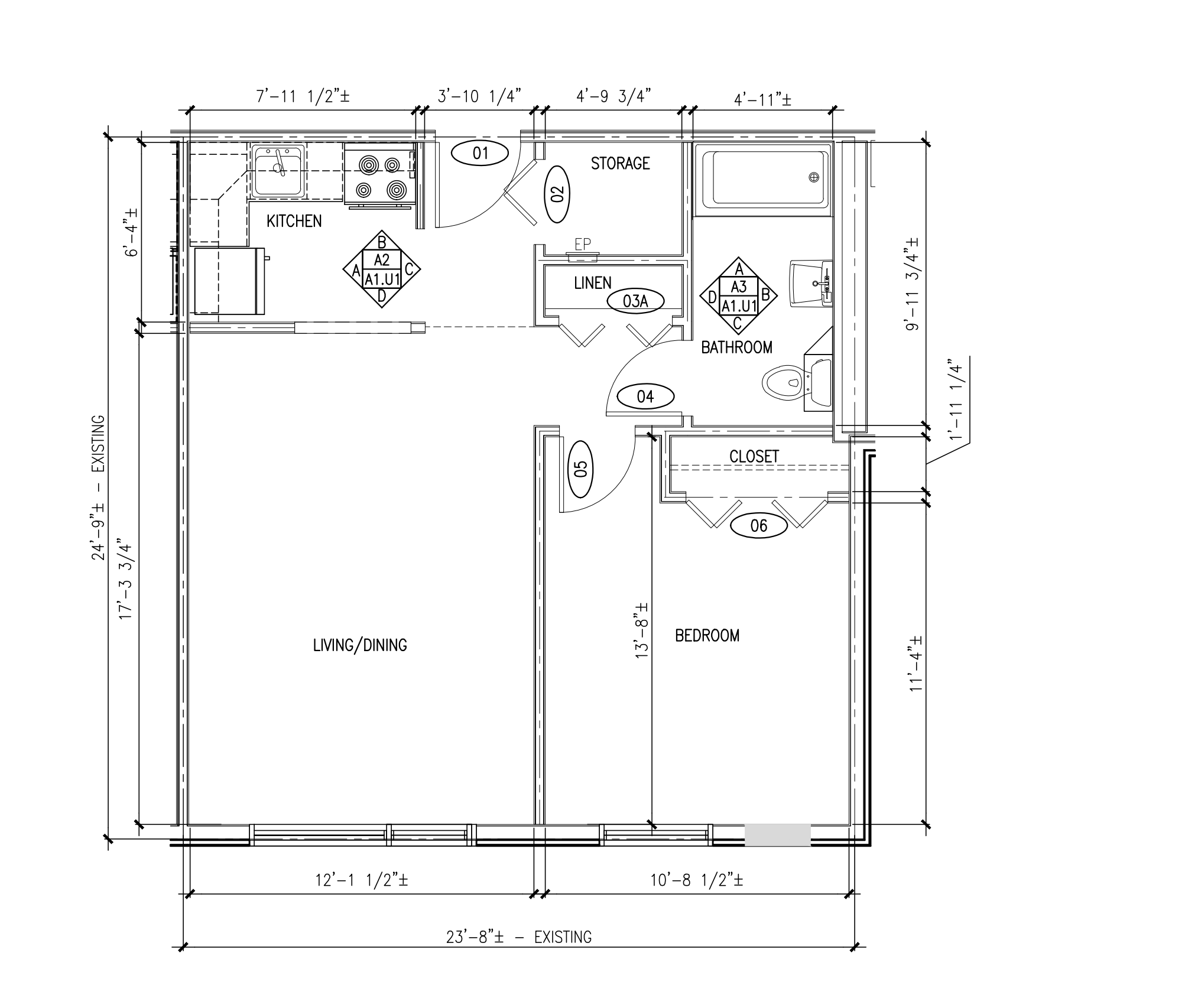
A3 TELEMEDICINE CABINET ELEVATIONS
REFERENCED FROM: FIRST FLOOR BUILDING 151 (A1.31)



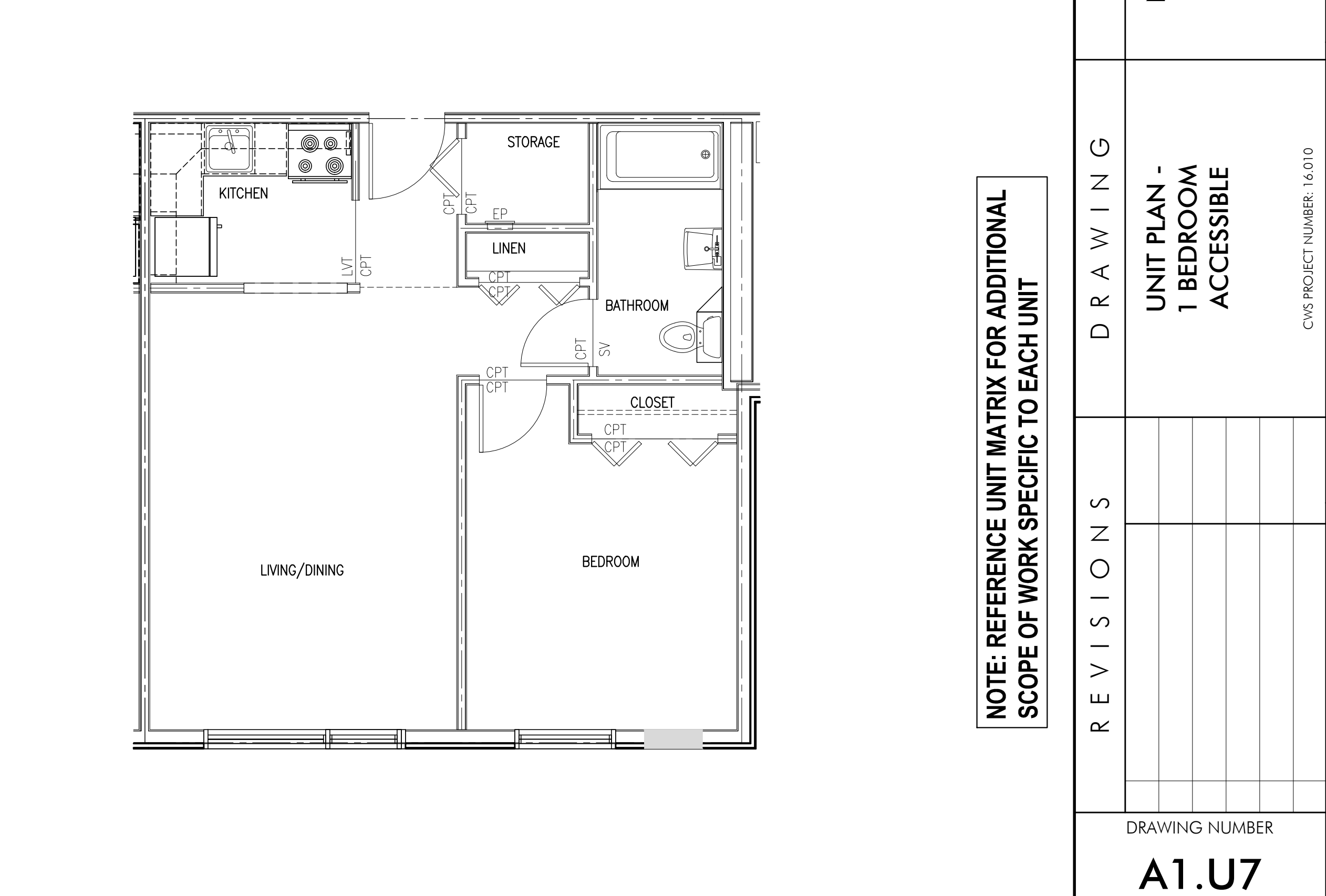
F3 TYPICAL REMOVABLE CABINET DETAIL AT WORK AREA
SCALE: 1"=1'-0"



A5 UNIT 1BR COMMUNICATION - REFLECTED CEILING PLAN
SCALE: 1/4"=1'-0"



C5 UNIT 1BR COMMUNICATION- DIMENSIONAL PLAN
SCALE: 1/4"=1'-0"



F5 UNIT 1BR COMMUNICATION - LAYOUT FLOOR PLAN ANSI 117.1/ 504 MHRA /ADA COMMUNICATION FEATURES
SCALE: 1/4"=1'-0"
UNITS: 92 100 130 148 162