

CWS ARCHITECTS  
ARCHITECTURE | INTERIOR DESIGN  
434 CUMBERLAND AVENUE  
PORTLAND, MAINE 04101  
T: 207.774.4441  
F: 207.774.4016  
WWW.CWSARCH.COM

OWNER  
NORTHFIELD GREEN  
HOUSING PARTNERS LP.  
ONE CITY CENTER, 4TH FLOOR  
PORTLAND, MAINE 04101

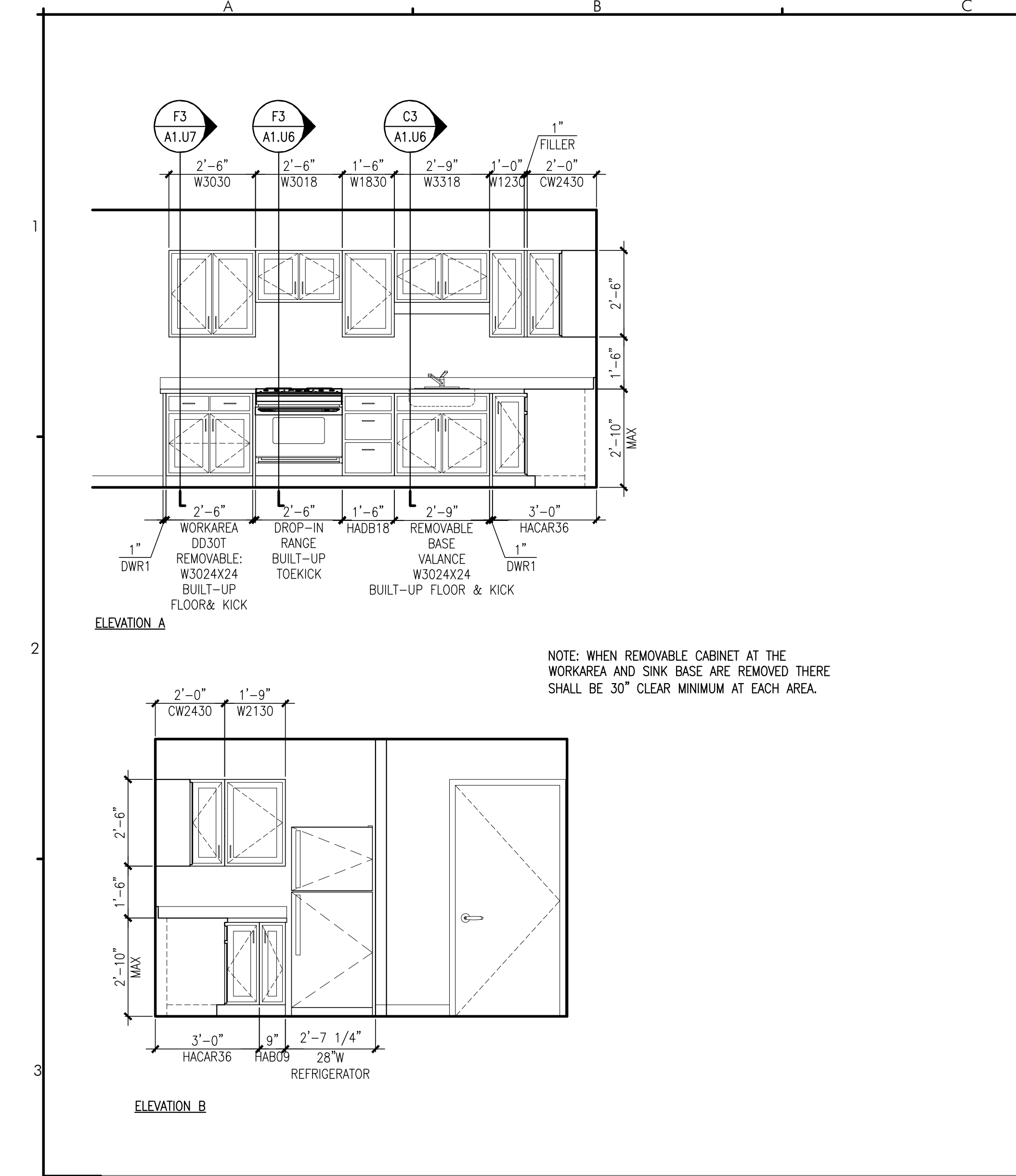
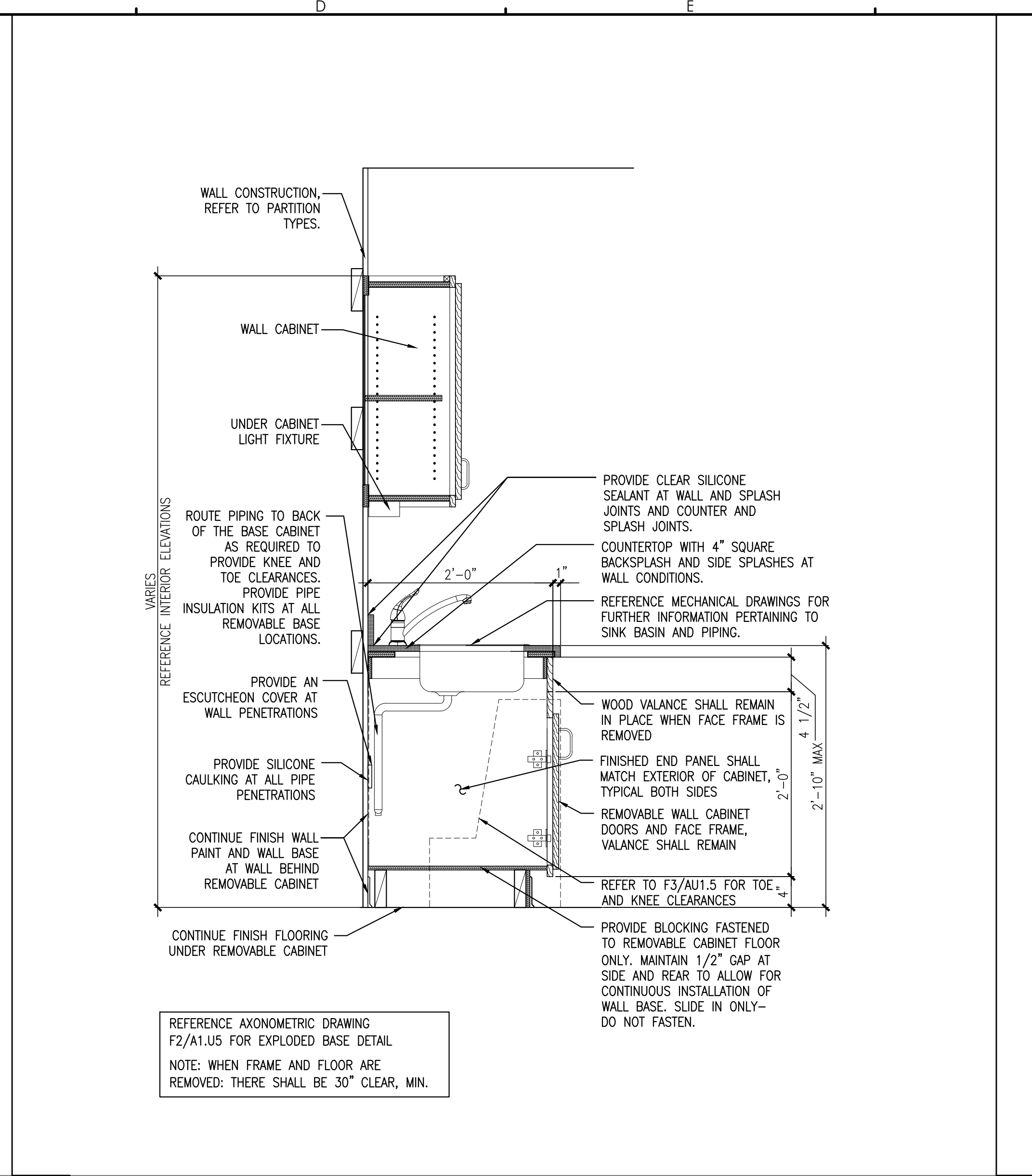
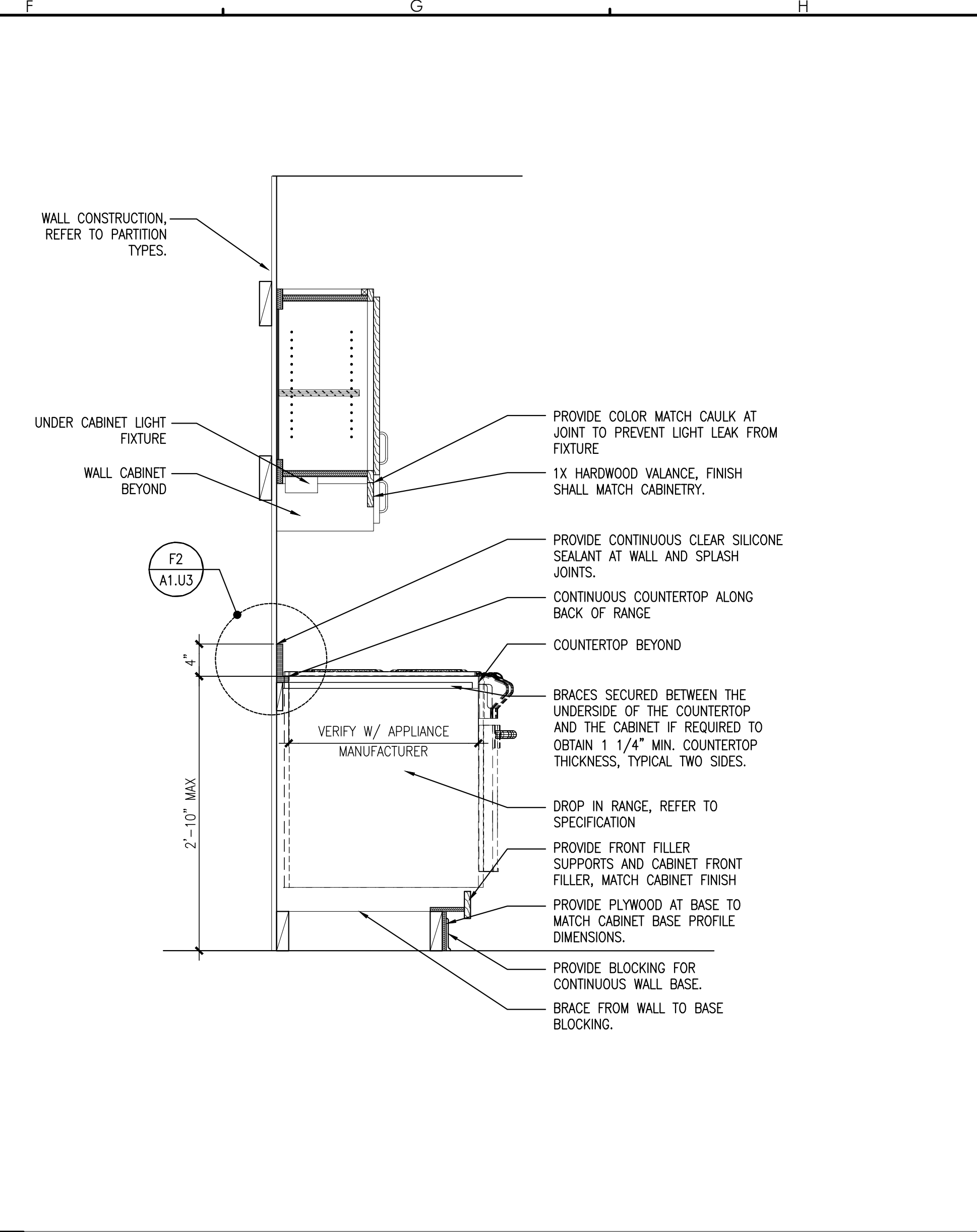
PROJECT  
NORTHFIELD GREEN  
147 - 1ST ALLEN AVENUE  
PORTLAND, MAINE 04101

DRAWING  
UNIT PLAN -  
1 BEDROOM  
ACCESSIBLE  
CWS PROJECT NUMBER: 16.010

REVISIONS


DRAWING NUMBER  
**A1.U6**

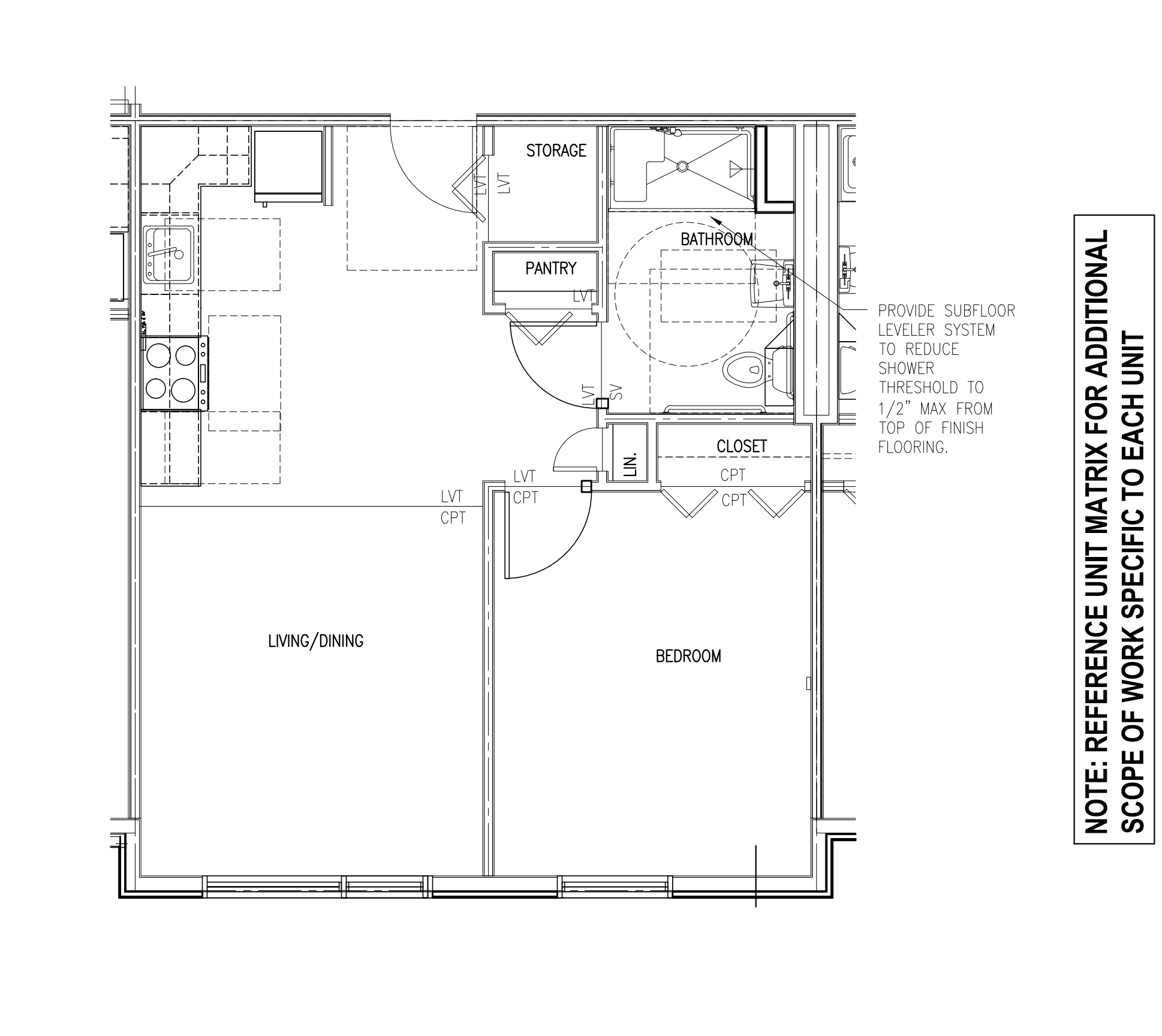
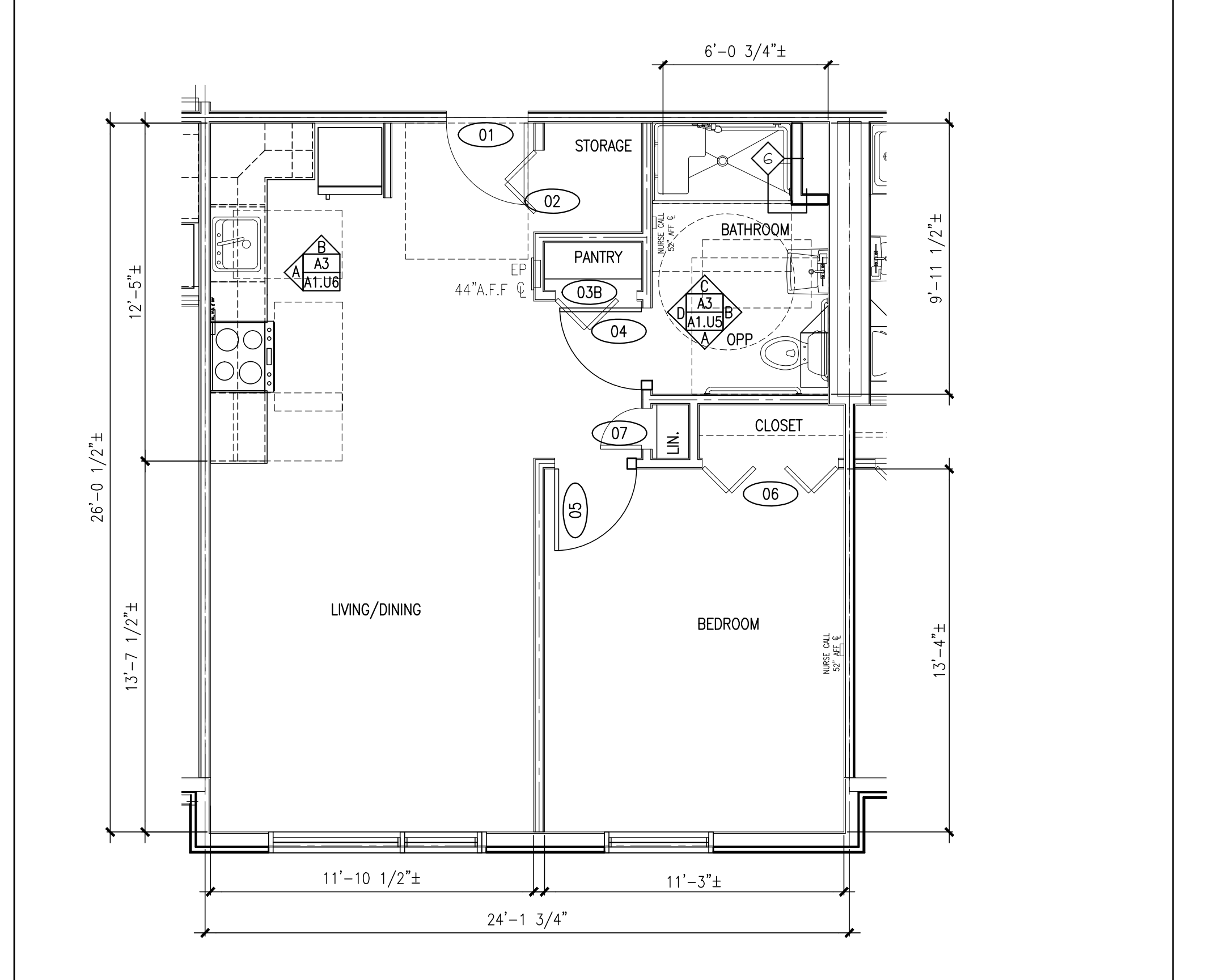
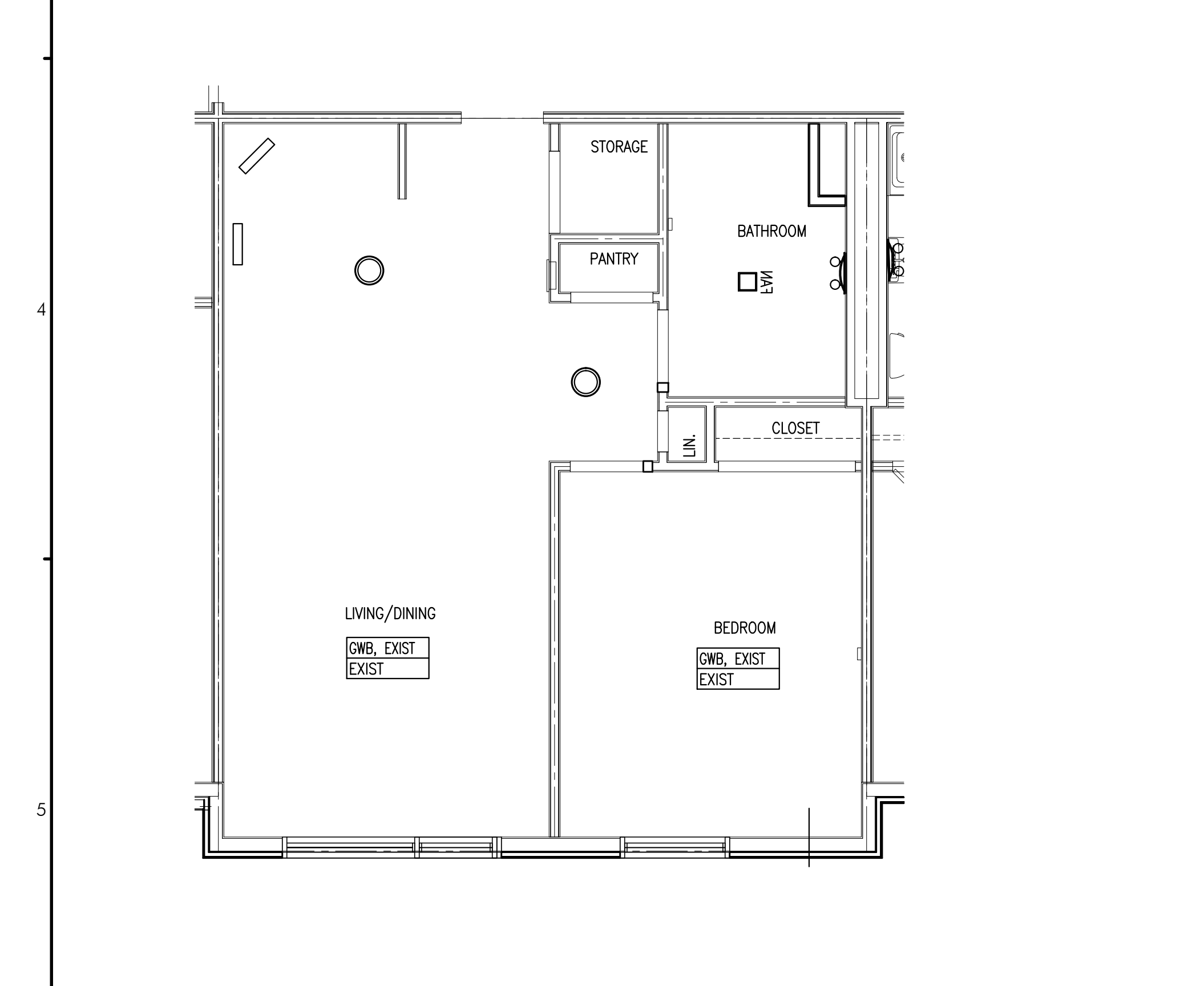
SCALE: AS NOTED  
DATE: 11/22/2017



**A3** ACCESSIBLE KITCHEN ELEVATION  
REFERENCED FROM: SCALE: 3/8"=1'-0"

**C3** TYPICAL REMOVABLE CABINET DETAIL AT KITCHEN SINK  
REFERENCED FROM: SCALE: 1"=1'-0"

**F3** TYPICAL DROP IN RANGE AND CABINET DETAIL  
REFERENCED FROM: SCALE: 1"=1'-0"



**A5** UNIT 1BR ACCESSIBLE - REFLECTED CEILING PLAN  
REFERENCED FROM: SCALE: 1/4"=1'-0"

**C5** UNIT 1BR T ACCESSIBLE - DIMENSIONAL PLAN  
REFERENCED FROM: SCALE: 1/4"=1'-0"

**F5** UNIT 1BR ACCESSIBLE - LAYOUT FLOOR PLAN  
ANSI 117.1/ 504 MHR A /ADA MOBILITY FEATURES  
UNITS: 7 76 174  
SCALE: 1/4"=1'-0"

SCALE: AS NOTED  
DATE: 11/22/2017