

**CWS ARCHITECTS**  
ARCHITECTURE | INTERIOR DESIGN  
434 CUMBERLAND AVENUE  
PORTLAND, MAINE 04101  
T: 207.774.4441  
F: 207.774.4016  
WWW.CWSARCH.COM

DESIGNER

OWNER

PROJECT

DRAWING

REVISIONS

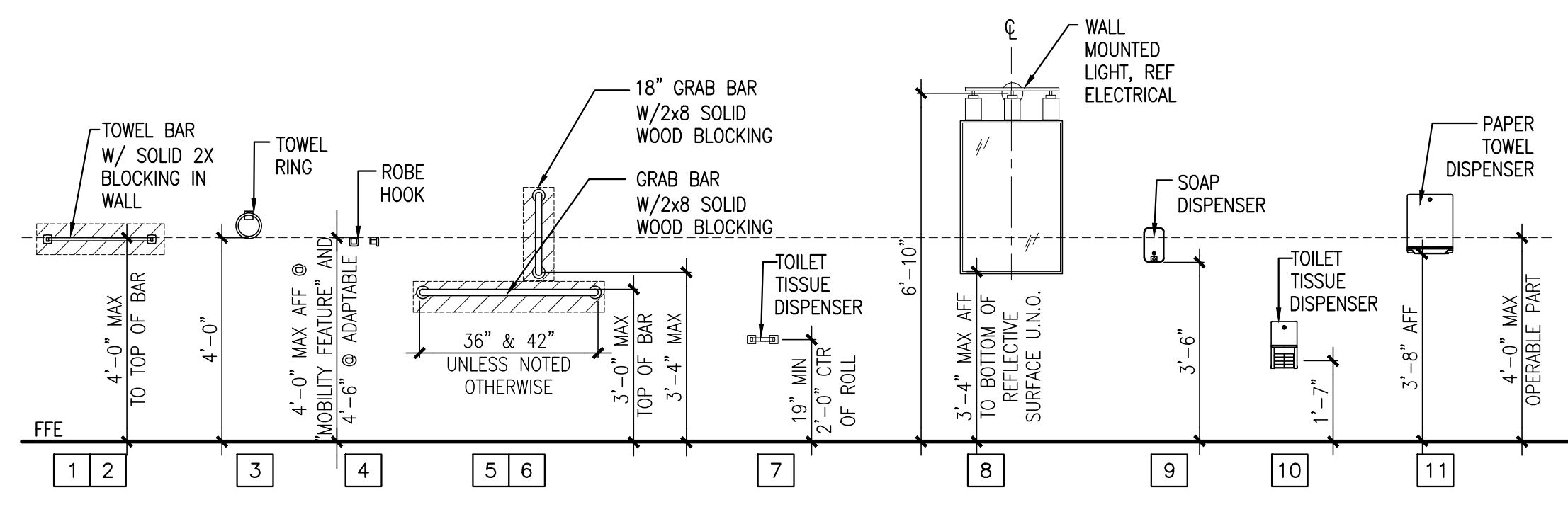
NORTHFIELD GREEN HOUSING PARTNERS LP.

NORTHFIELD GREEN

UNIT PLAN - 1 BEDROOM

DRAWING NUMBER  
**A1.U2**

SCALE: AS NOTED  
DATE: 11/22/2017



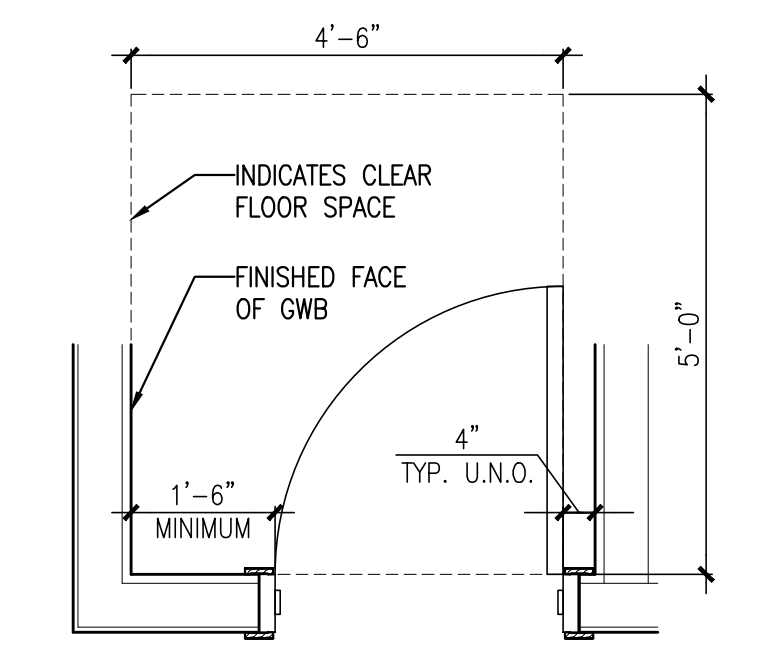
**BATHROOM AND PUBLIC TOILET ROOM ACCESSORY MOUNTING HEIGHTS**

**BATHROOM AND PUBLIC TOILET ROOM ACCESSORY LEGEND**

- 1 18" TOWEL BAR
- 2 24" TOWEL BAR,
- 3 TOWEL RING
- 4 ROBE HOOK, SINGLE
- 5A 42" GRAB BAR, STAINLESS STEEL W/ CONCEALED MOUNTING, NOTE 8
- 5B 36" GRAB BAR, STAINLESS STEEL W/ CONCEALED MOUNTING NOTE 8
- 5C 18" GRAB BAR, STAINLESS STEEL W/ CONCEALED MOUNTING NOTE 8
- 6 GRAB BAR ANCHORS
- 7 TOILET TISSUE DISPENSER, SINGLE-ROLL, SURFACE MOUNTED
- 8 24"x36" PLATE GLASS MIRROR W/ BEVELED EDGE
- 9 SOAP DISPENSER, SURFACE MOUNTED
- 10 TOILET TISSUE DISPENSER, SURFACE MOUNTED, MULTI-ROLL
- 11 PAPER TOWEL DISPENSER, SURFACE MOUNTED

**GENERAL NOTES:**

- 1.) REFERENCE SPECIFICATIONS FOR ADDITIONAL INFORMATION.
- 2.) CONTRACTOR SHALL PROVIDE SOLID BLOCKING AS REQUIRED FOR ALL TOILET ACCESSORIES, SHOWER GRAB BARS, AND DOOR STOPS.
- 3.) SINK FIXTURES DIFFER, REFERENCE PLUMBING DRAWINGS.
- 4.) PROVIDE FINISH FLOORING UNDER ALL BASE CABINETS, REMOVABLE SINK CABINETS FRONT AND REMOVABLE PANEL AT SINK AND OPEN WORK SURFACE.
- 5.) PROVIDE FINISH WALL WITH WALL BASE BEHIND ALL REMOVABLE CABINETS AND SINK ENCLOSURES.
- 6.) INSTALL REMOVABLE BASE CABINETS AND SINK ENCLOSURES WITH BRASS SCREWS FOR EASY REMOVAL.
- 7.) PROVIDE INSULATED PIPES BENEATH ALL SINK CABINETS WITH REMOVABLE FRONTS AND SINK ENCLOSURES.
- 8.) BLOCKING SHALL BE PROVIDED IN ALL APARTMENTS AT GRAB BAR LOCATIONS.
- 9.) VERIFY DOOR STOP/BUMPER LOCATIONS IN FIELD PRIOR TO STOP/BUMPER INSTALLATION, TYPICAL.
- 10.) FIELD VERIFY ALL DIMENSIONS IN KITCHENS AND BATHROOMS PRIOR TO PREPARING SHOP DRAWINGS FOR ALL MILLWORK AND CABINETRY.



**DOOR LOCATION**  
ALL DOORS INDICATED AS BEING 18" FROM AN ADJACENT WALL MUST BE 18" MINIMUM FROM THE FINISHED FACE OF THE GWB TO THE DOOR FRAME AS INDICATED ABOVE. THIS APPLIES TO DOORS IN ALL UNITS CALLED OUT AS ANSI 117.1, 504 MHRA AND ADAAG COMPLIANT

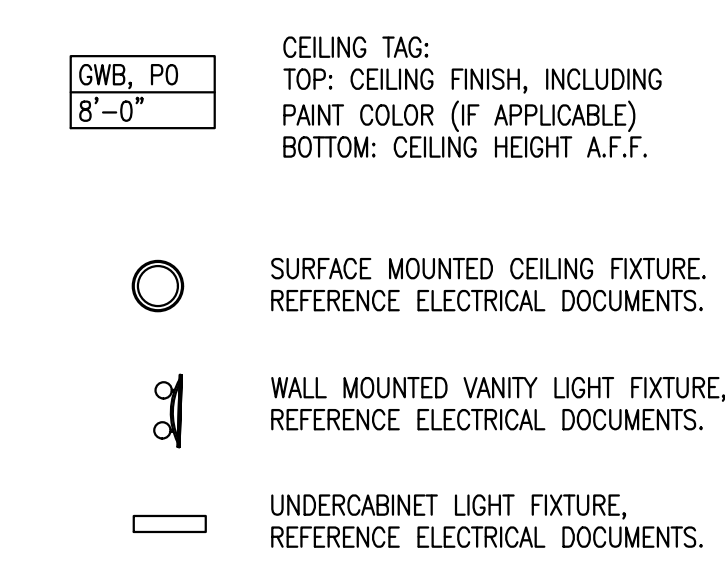
**WATER CLOSET LOCATION IN ANSI 117.1 AND ADAAG UNITS**

WATER CLOSETS SHALL BE LOCATED 16" MINIMUM AND 18" MAXIMUM FROM THE FINISHED FACE OF GWB OF THE SIDE WALL TO THE CENTERLINE OF THE WATER CLOSET.

**LAVATORIES LOCATION IN ADAAG UNITS AND ANSI 117.1 TYPE A UNITS**

LAVATORIES SHALL BE MOUNTED SO THAT IT IS 2'-10" MAXIMUM MEASURED TO THE TOP OF THE RIM OR THE TOP OF THE COUNTER SURFACE, WHICHEVER IS THE HIGHER SURFACE MEASURED FROM TOP OF THE FINISHED FLOOR SURFACE. WHERE FLOORS SLOPE IN EXISTING BUILDINGS THE 2'-10" MAXIMUM SHALL BE MEASURED AT THE FRONT FACE OF THE LAVATORY OR VANITY AND NOT AT THE WALL BEHIND.

**REFLECTED CEILING LEGEND:**

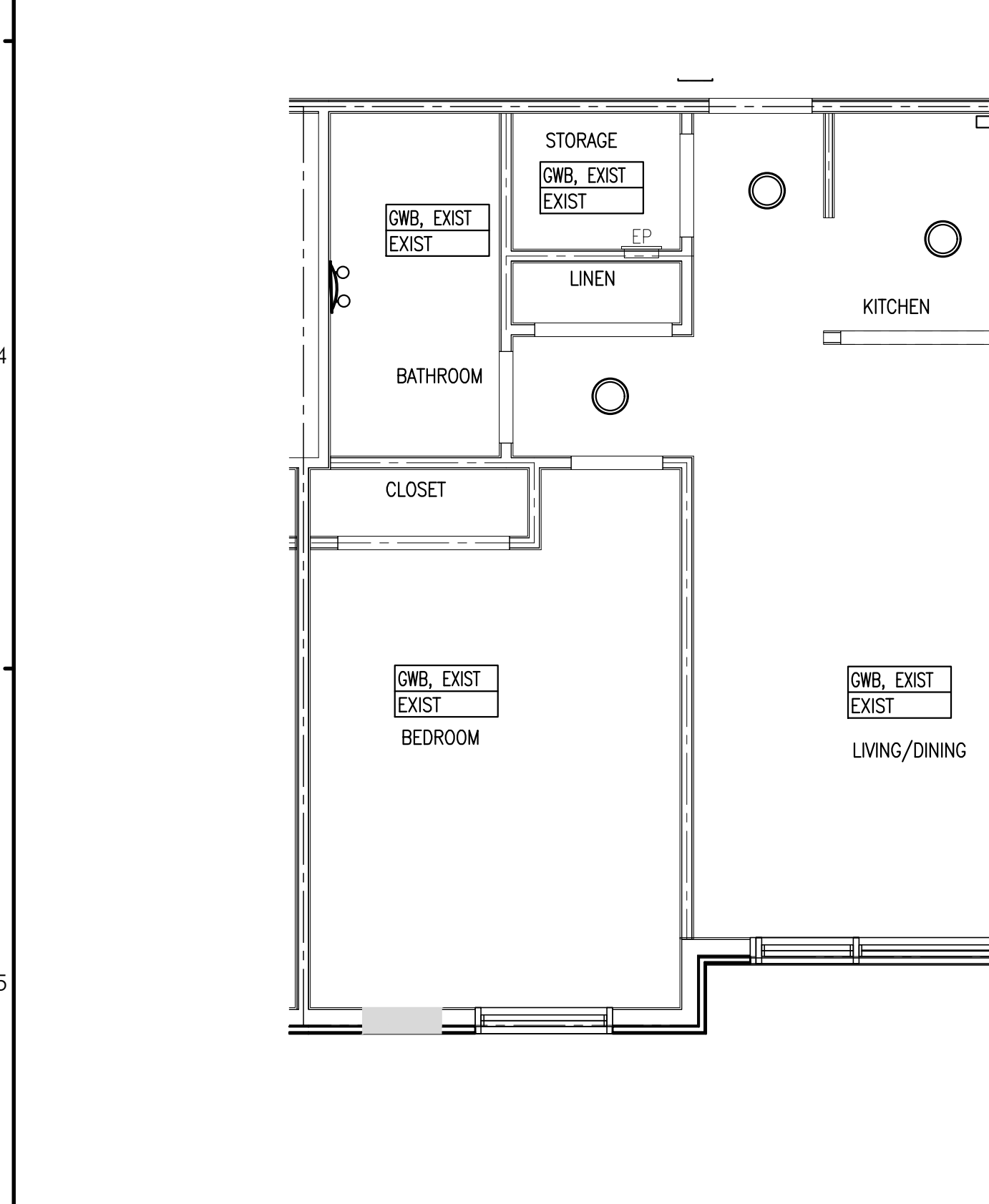


**NOTES:**

1. INTERIOR FIXTURE LEGEND FOR DESIGN INTENT ONLY. COORDINATE WITH ELECTRICAL DRAWINGS FOR LIGHT FIXTURE TYPES AND CIRCUITING. ANY LIGHT FIXTURE DISCREPANCY SHALL BE BROUGHT TO THE ATTENTION OF AND COORDINATED WITH ARCHITECT AND ELECTRICAL ENGINEER PRIOR TO LIGHT FIXTURE INSTALLATION.
2. NEW LIGHT FIXTURES SHALL BE LOCATED IN THE SAME LOCATION AS THE EXISTING FIXTURES, UNLESS NOTED OTHERWISE. PATCH AND REPAIR CEILING AS REQUIRED.
3. REFERENCE UNIT PLAN DRAWINGS A1.U1-A1.U7 FOR UNIT LIGHTING LAYOUT. COORDINATE WITH ELECTRICAL DRAWINGS. ANY DISCREPANCY SHALL BE BROUGHT TO THE ATTENTION OF AND COORDINATED WITH ARCHITECT AND ELECTRICAL ENGINEER PRIOR TO LIGHT FIXTURE INSTALLATION.
4. REFERENCE INTERIOR FINISH LEGEND FOR SCHEDULE OF MATERIALS.

**A3 ACCESSORY ELEVATIONS, LEGENDS AND GENERAL NOTES**

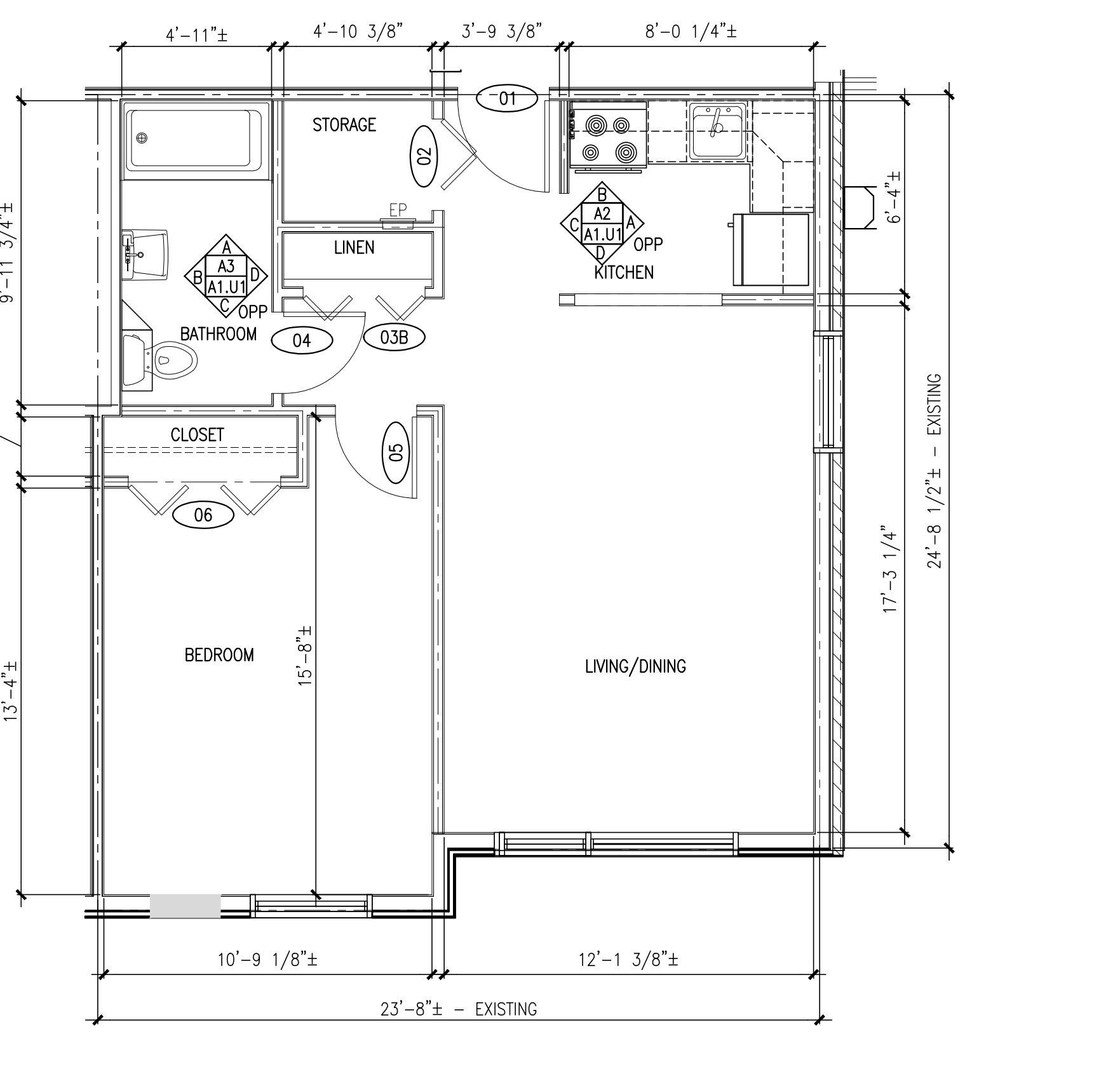
REFERENCED FROM: SCALE: 3/8"=1'-0"



**A5 UNIT 1BR - REFLECTED CEILING PLAN**  
REFERENCED FROM: SCALE: 1/4"=1'-0"

**D3 TYP. CRITICAL DIMENSIONS FOR DOORS, CABINETS AND BATHROOM FIXTURES**

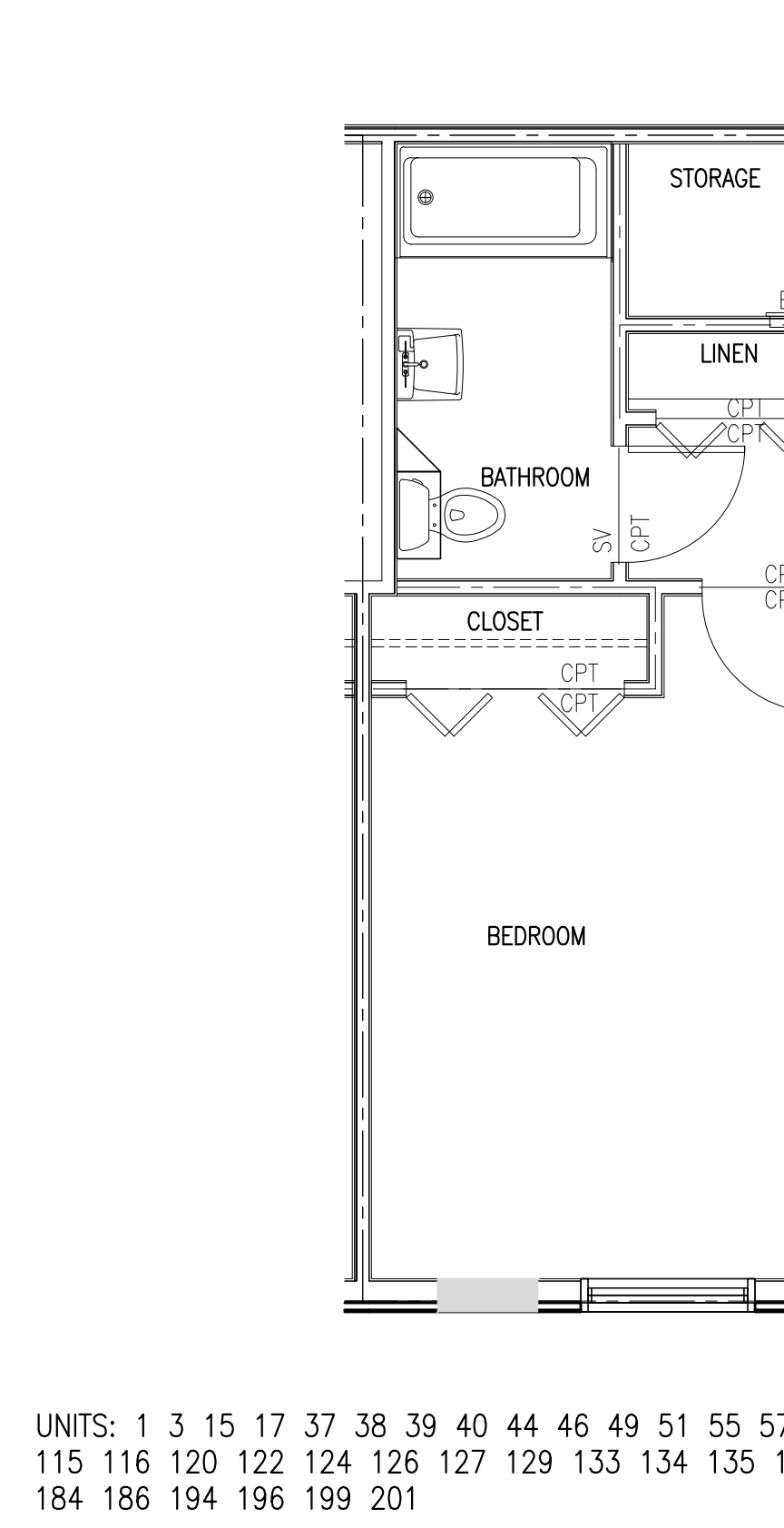
REFERENCED FROM: SCALE: N/A



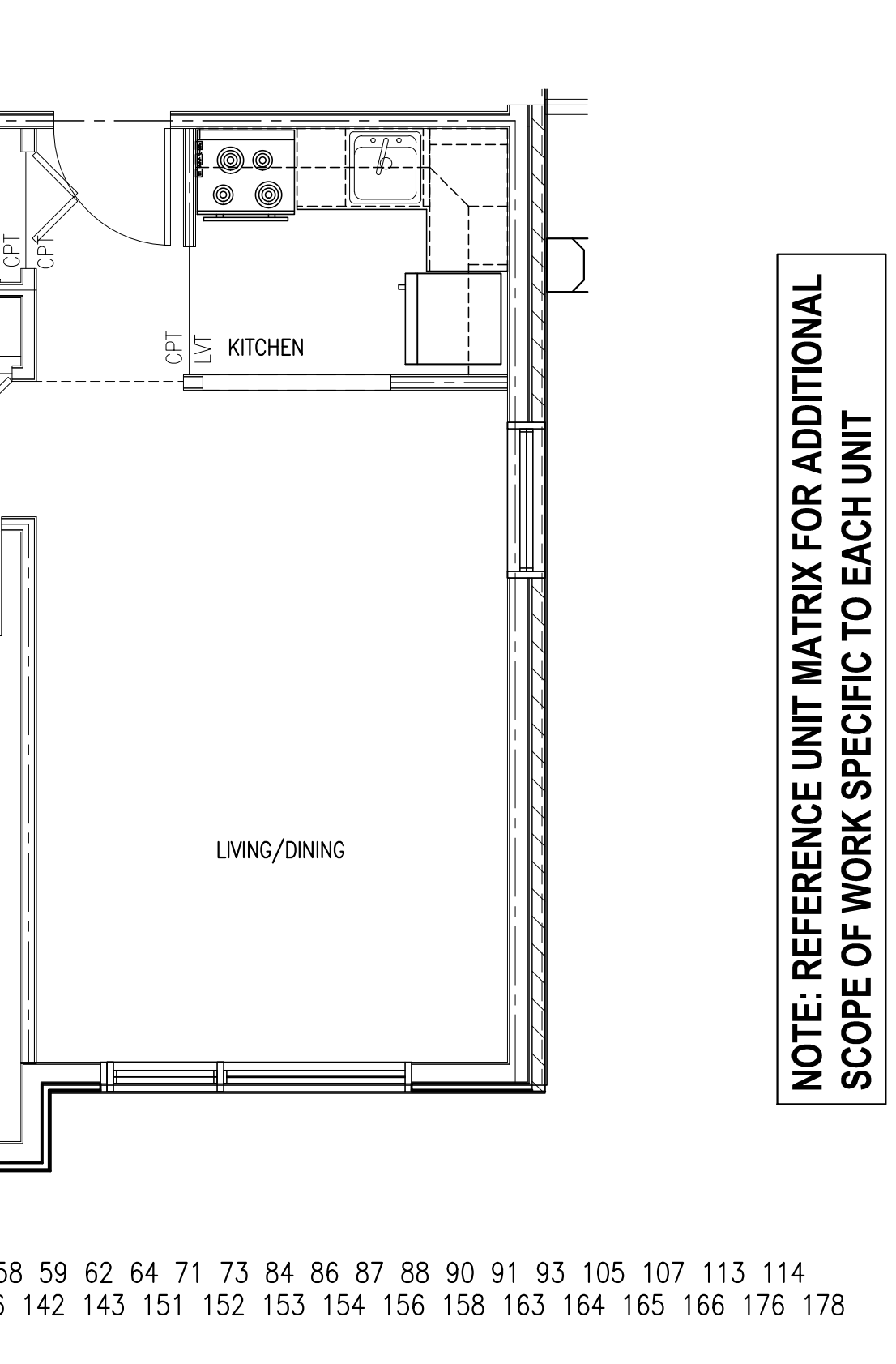
**C5 UNIT 1BR - DIMENSIONAL PLAN**  
REFERENCED FROM: SCALE: 1/4"=1'-0"

**F3 REFLECTED CEILING PLAN LEGEND**

REFERENCED FROM: SCALE: N/A



**F5 UNIT 1BR - LAYOUT FLOOR PLAN**  
ADA ACCESSIBLE ROUTE/ ADAPTABLE SCALE: 1/4"=1'-0"



**F5 UNIT 1BR - LAYOUT FLOOR PLAN**  
ADA ACCESSIBLE ROUTE/ ADAPTABLE SCALE: 1/4"=1'-0"

NOTE: REFERENCE UNIT MATRIX FOR ADDITIONAL SCOPE OF WORK SPECIFIC TO EACH UNIT

- UNITS: 1 3 15 17 37 38 39 40 44 46 49 51 55 57 58 59 62 64 71 73 84 86 87 88 90 91 93 105 107 113 114  
115 116 120 122 124 126 127 129 133 134 135 136 142 143 151 152 153 154 156 158 163 164 165 166 176 178  
184 186 194 196 199 201