



DESIGNER

CWS ARCHITECTS
ARCHITECTURE | INTERIOR DESIGN
434 CUMBERLAND AVENUE
PORTLAND, MAINE 04101
T: 207.774.4441
F: 207.774.4016
WWW.CWSARCH.COM

OWNER
NORTHFIELD GREEN
HOUSING PARTNERS LP.

ONE CITY CENTER, 4TH FLOOR
PORTLAND, MAINE 04101

PROJECT
NORTHFIELD GREEN

147 - 1ST ALLEN AVENUE
PORTLAND, MAINE 04101

DRAWING

UNIT PLAN -
1 BEDROOM

CWS PROJECT NUMBER: 16.010

REVISIONS

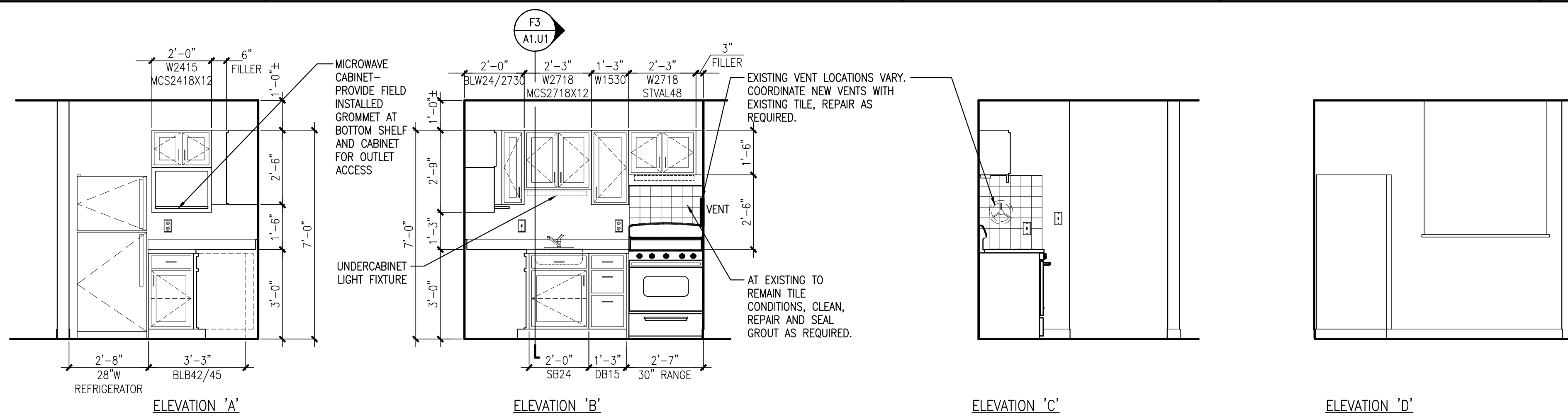
DRAWING NUMBER

A1.U1

SCALE: AS NOTED

DATE: 11/22/2017

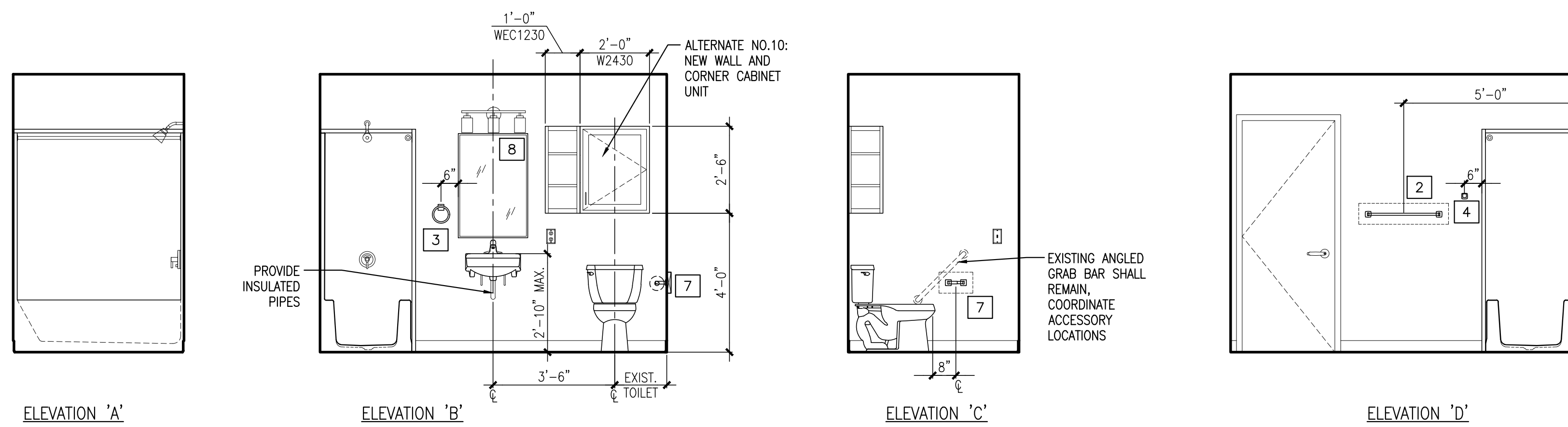
ISSUED NOVEMBER 22, 2017



NOTES:
1. VERIFY OVERALL KITCHEN DIMENSIONS PRIOR TO PREPARING SHOP DRAWINGS.

A2 UNIT 1BR KITCHEN ELEVATIONS
REFERENCED FROM:

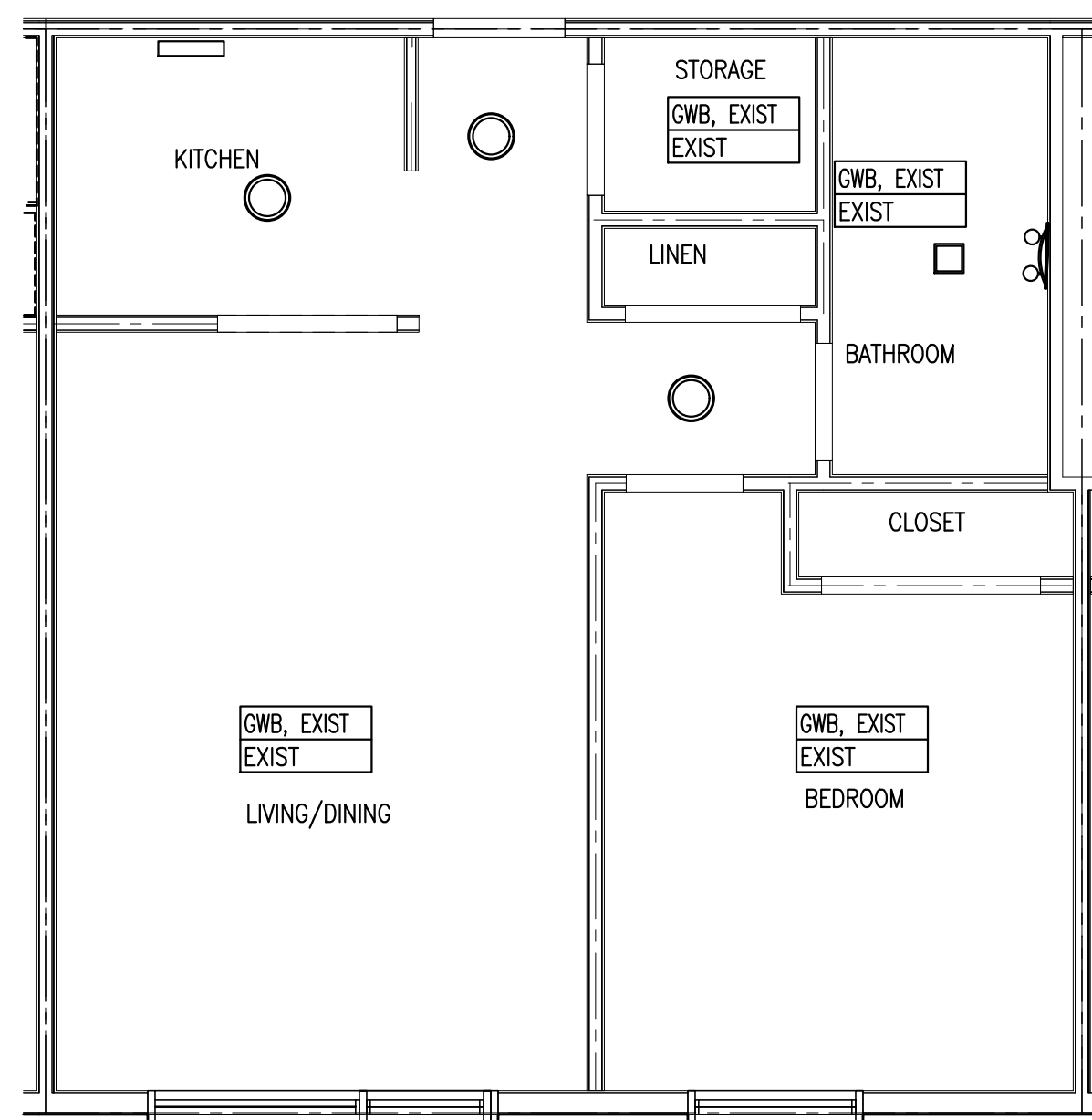
SCALE: 3/8"=1'-0"



REF A3/A1.U2 FOR TOILET ACCESSORY ELEVATIONS, LEGENDS AND GENERAL NOTES

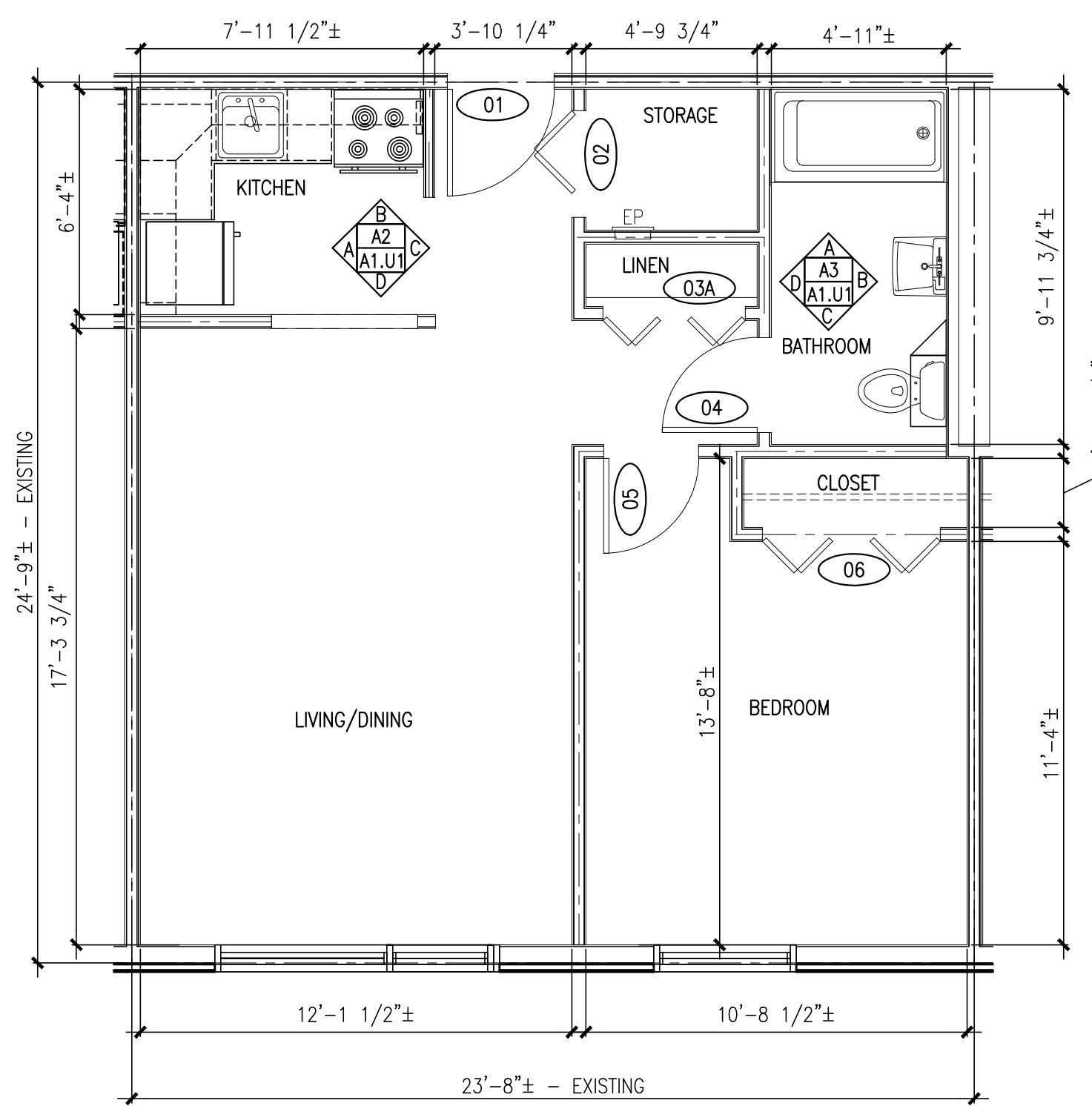
A3 UNIT 1BR BATHROOM ELEVATIONS
REFERENCED FROM:

SCALE: 3/8"=1'-0"



A5 UNIT 1BR - REFLECTED CEILING PLAN
REFERENCED FROM:

SCALE: 1/4"=1'-0"

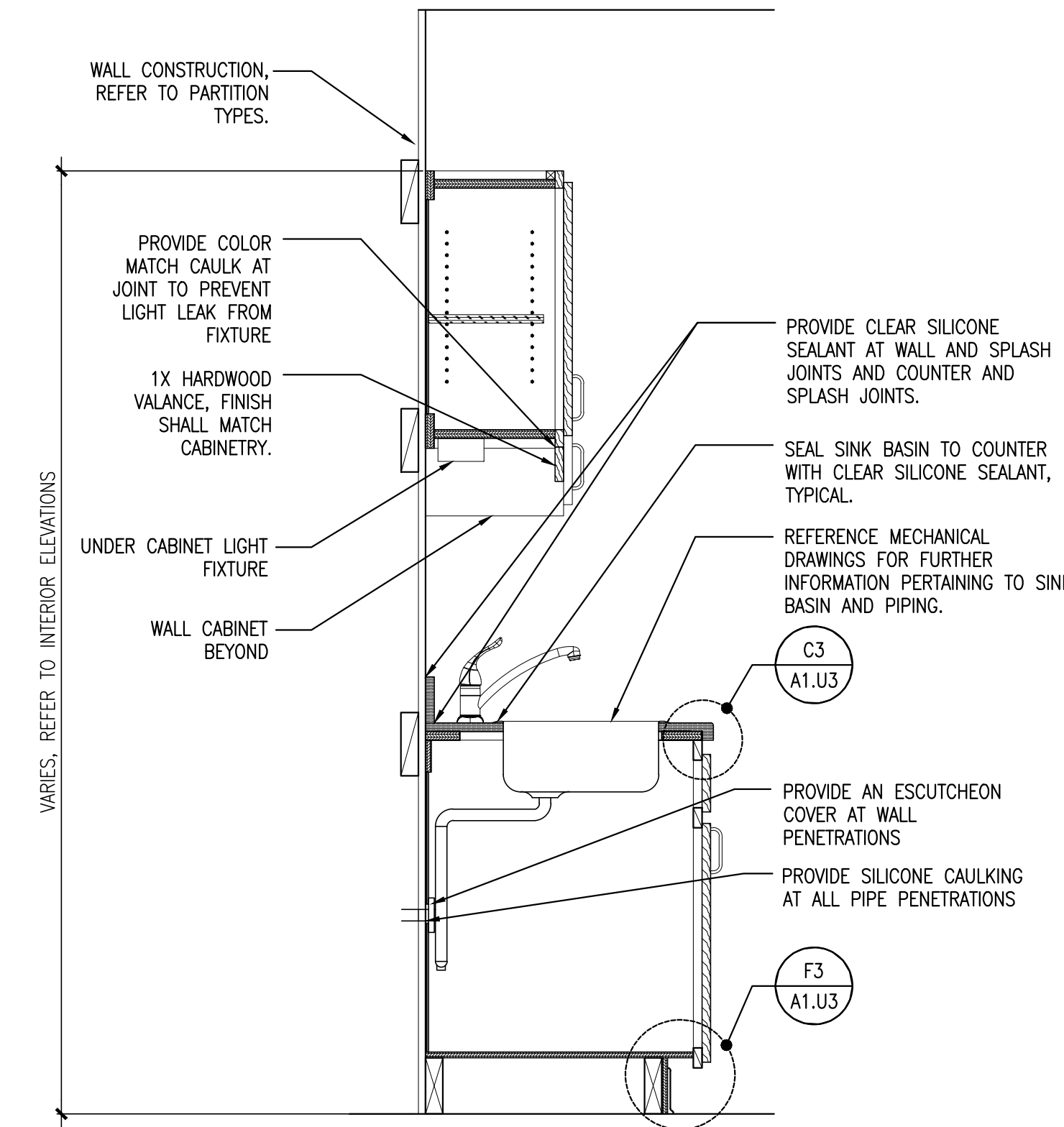


C5 UNIT 1BR - DIMENSIONAL PLAN
REFERENCED FROM:

SCALE: 1/4"=1'-0"

F3 TYPICAL DETAIL AT SINK BASE
REFERENCED FROM:

SCALE: 1"=1'-0"



F5 UNIT 1BR - LAYOUT FLOOR PLAN
REFERENCED FROM:

ADA ACCESSIBLE ROUTE/ ADAPTABLE
SCALE: 1/4"=1'-0"

- UNITS: 2 4 5 6 8 9 10 12 13 14 16 18 19 20 21 22 24 26 27 29 30 31 32 33 34 35 36 41 43 45 47 48 50 52 53 54 56 61 66 67 68 69 72 77 78 79 80 81 82 83 85 89 94 95 96 97 98 99 100 101 102 13 104 106 108 109 110 111 112 117 118 119 121 123 125 128 131 132 137 138 139 140 141 144 145 146 147 148 149 150 155 157 159 160 161 162 167 170 171 172 175 177 179 180 181 182 185 187 188 190 191 195 197 198 200

NOTE: REFERENCE UNIT MATRIX FOR ADDITIONAL SCOPE OF WORK SPECIFIC TO EACH UNIT