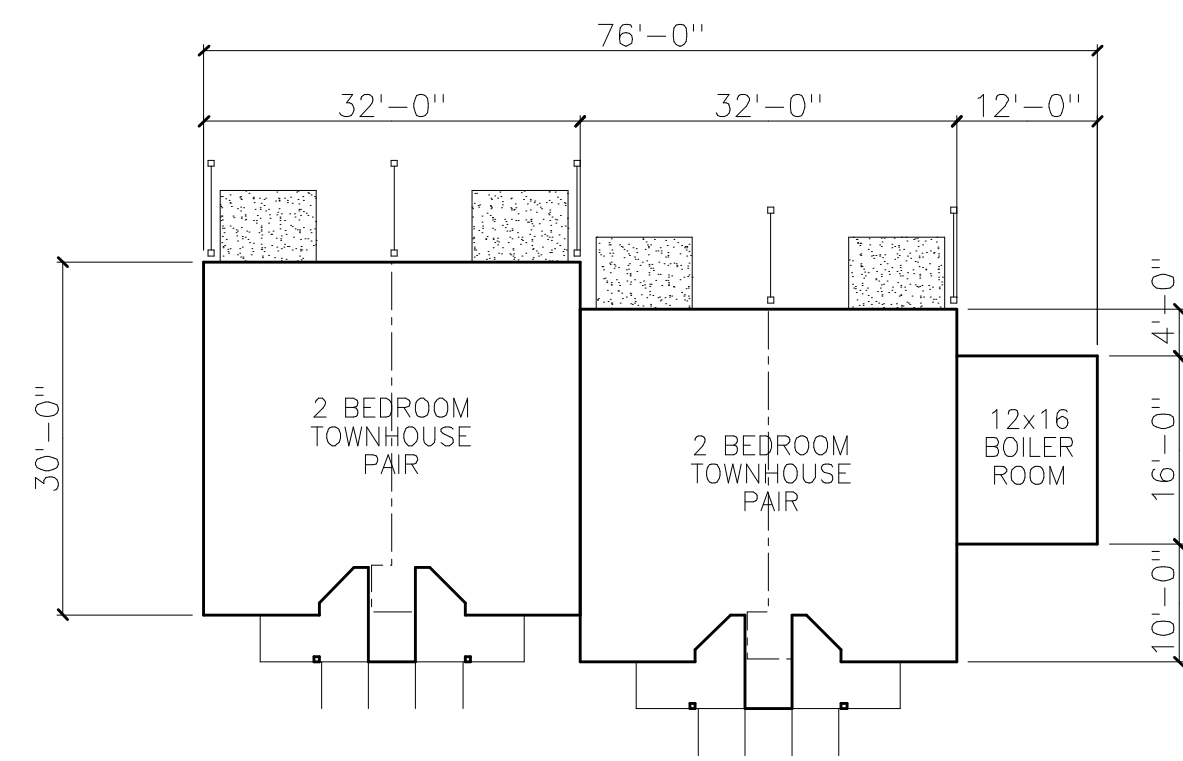


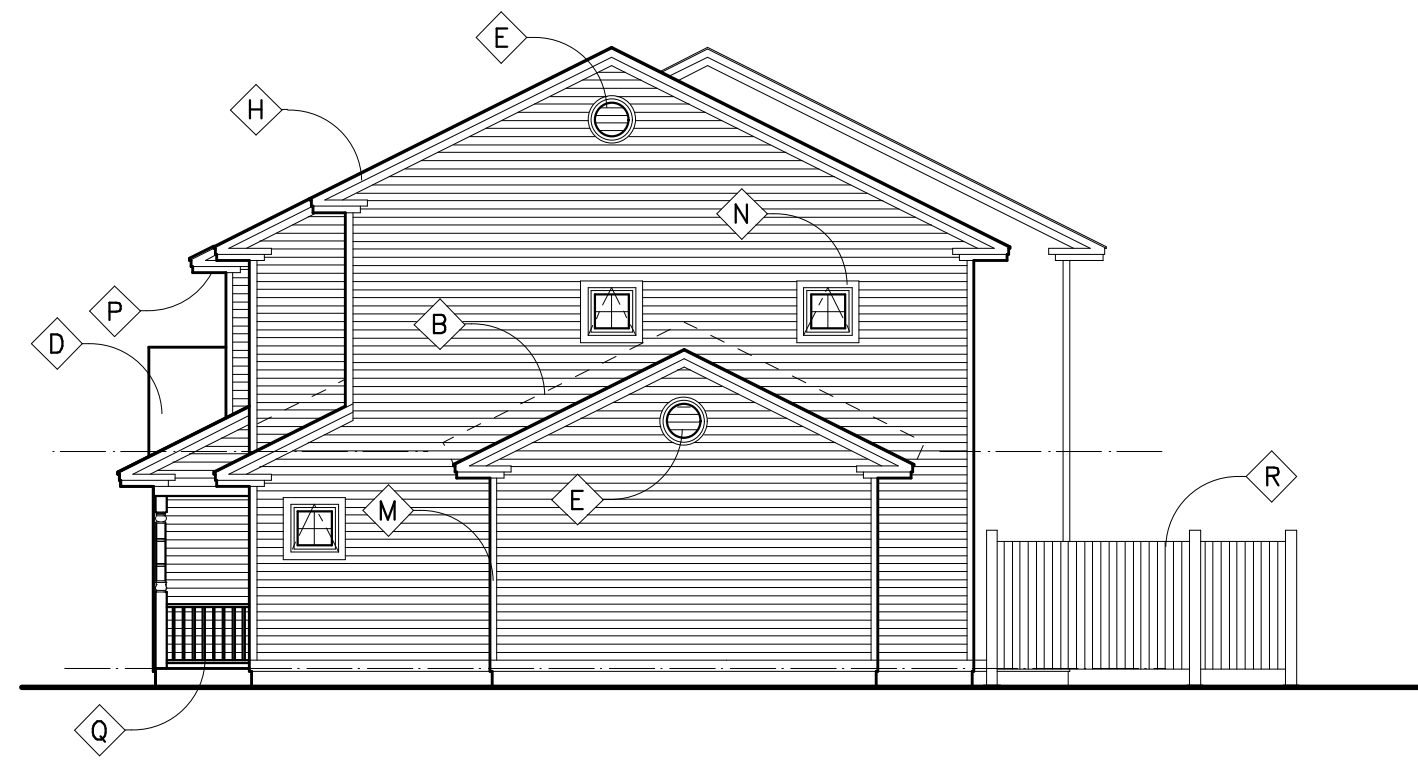
BUILDING A - (2) TWO BEDROOM TOWNHOUSE PAIRS



BUILDING A



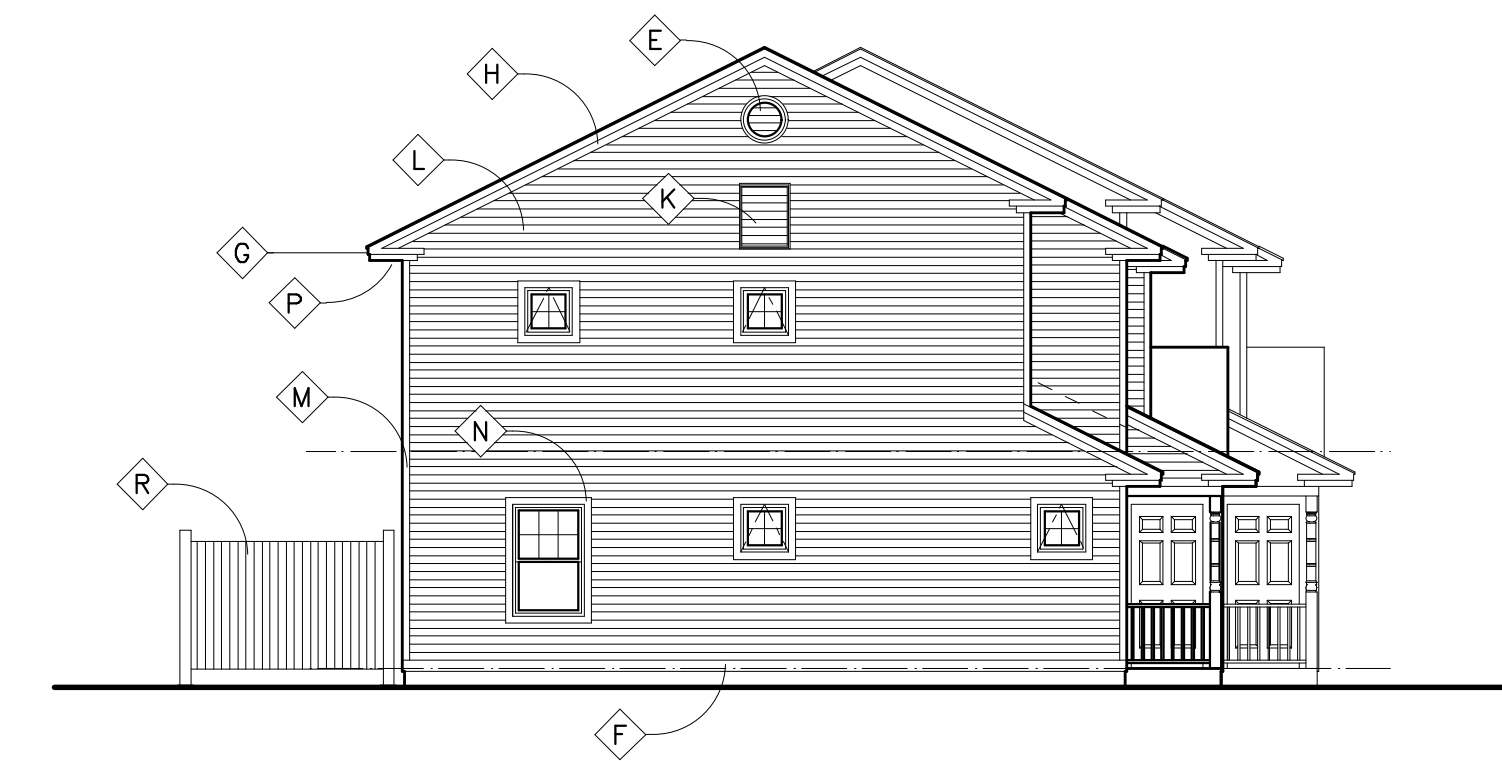
FRONT ELEVATION



RIGHT SIDE ELEVATION

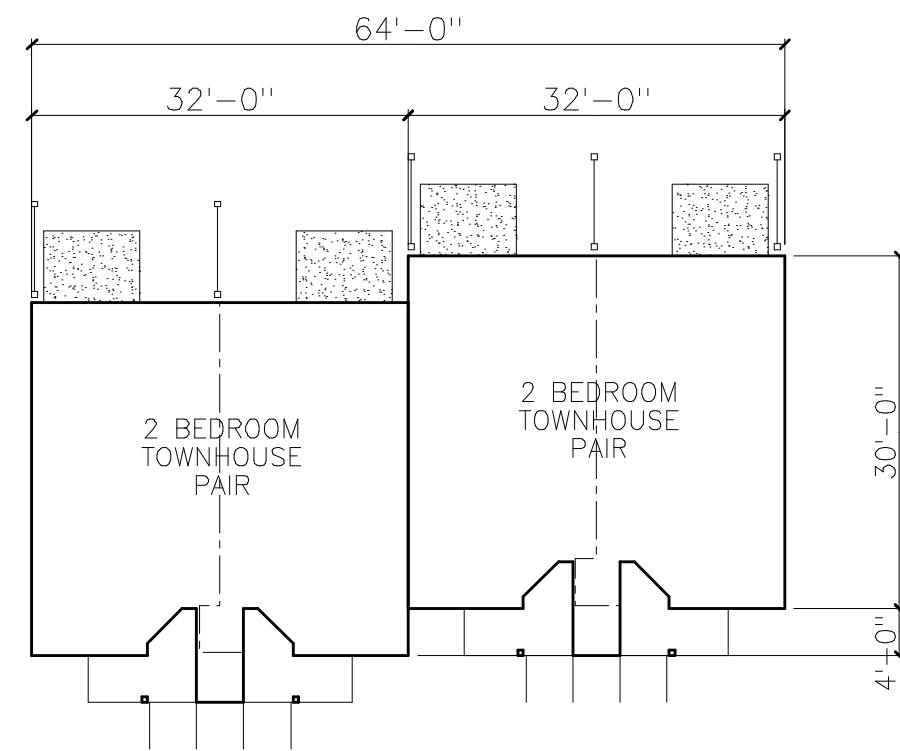


REAR ELEVATION

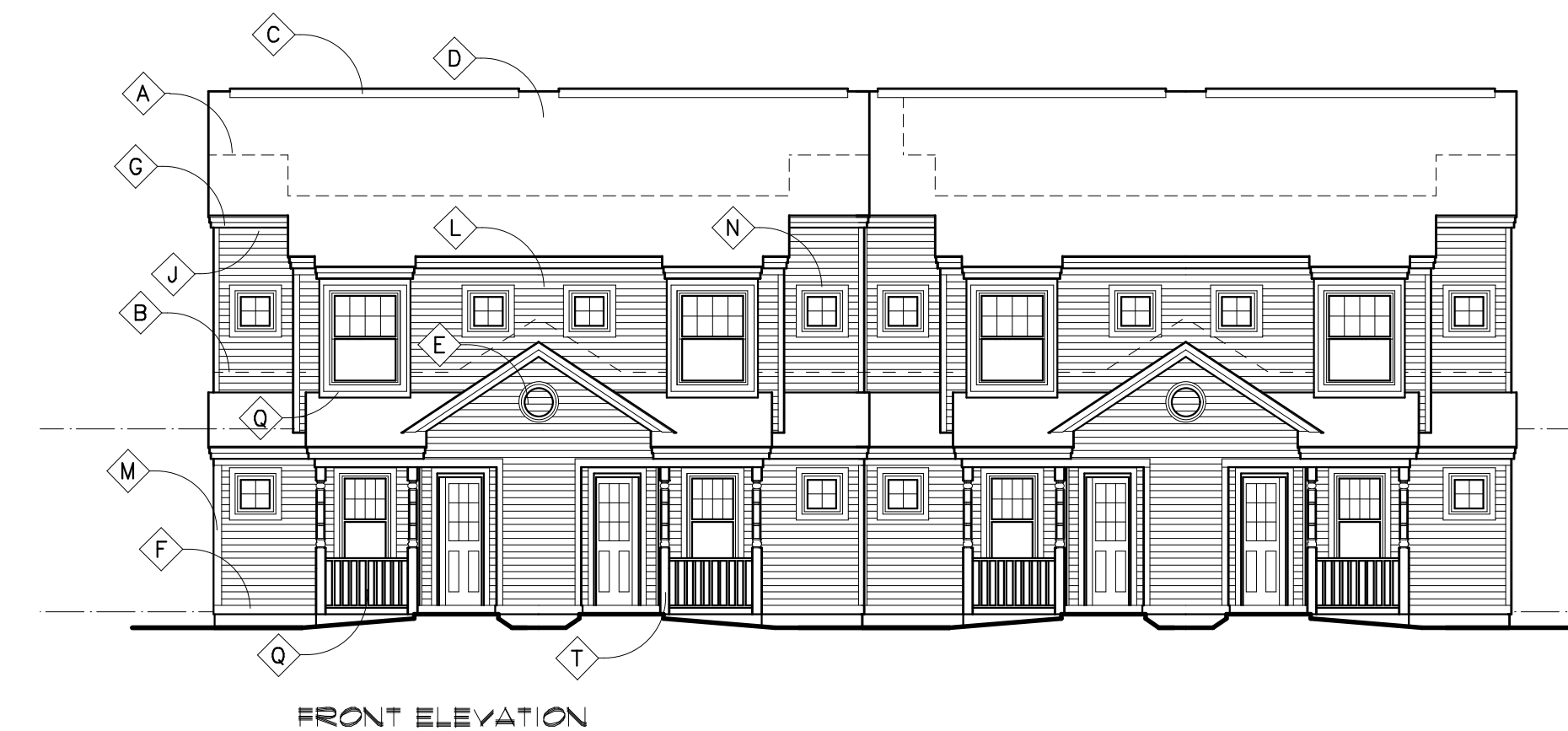


LEFT SIDE ELEVATION

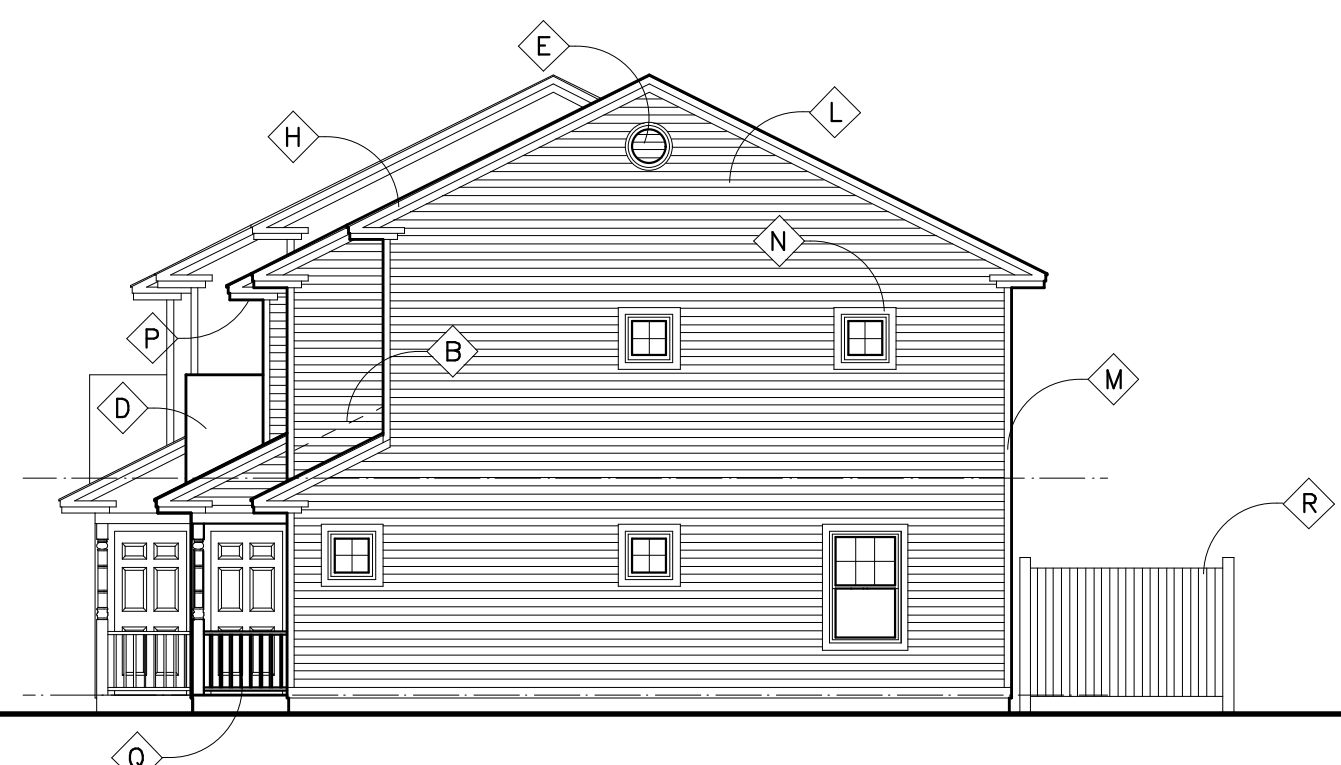
BUILDING B - (2) TWO BEDROOM TOWNHOUSE PAIRS



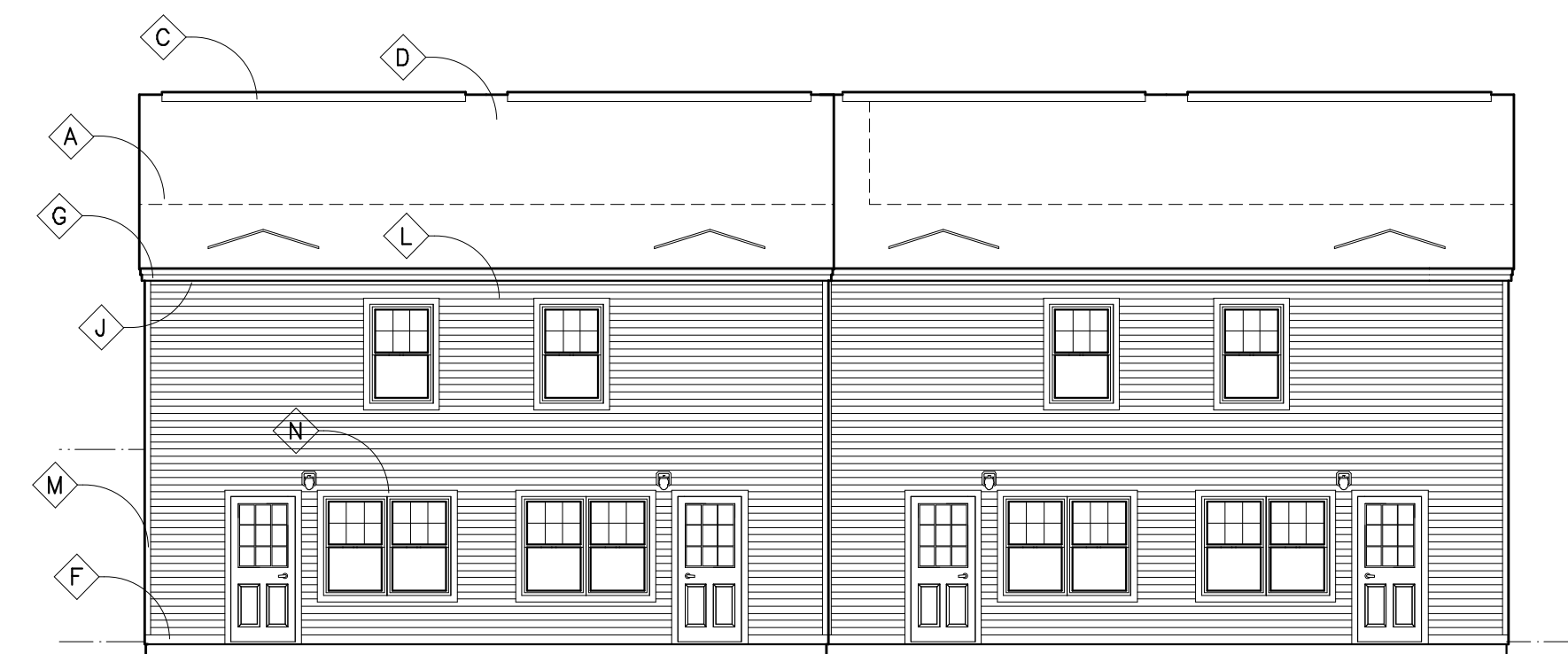
BUILDING B



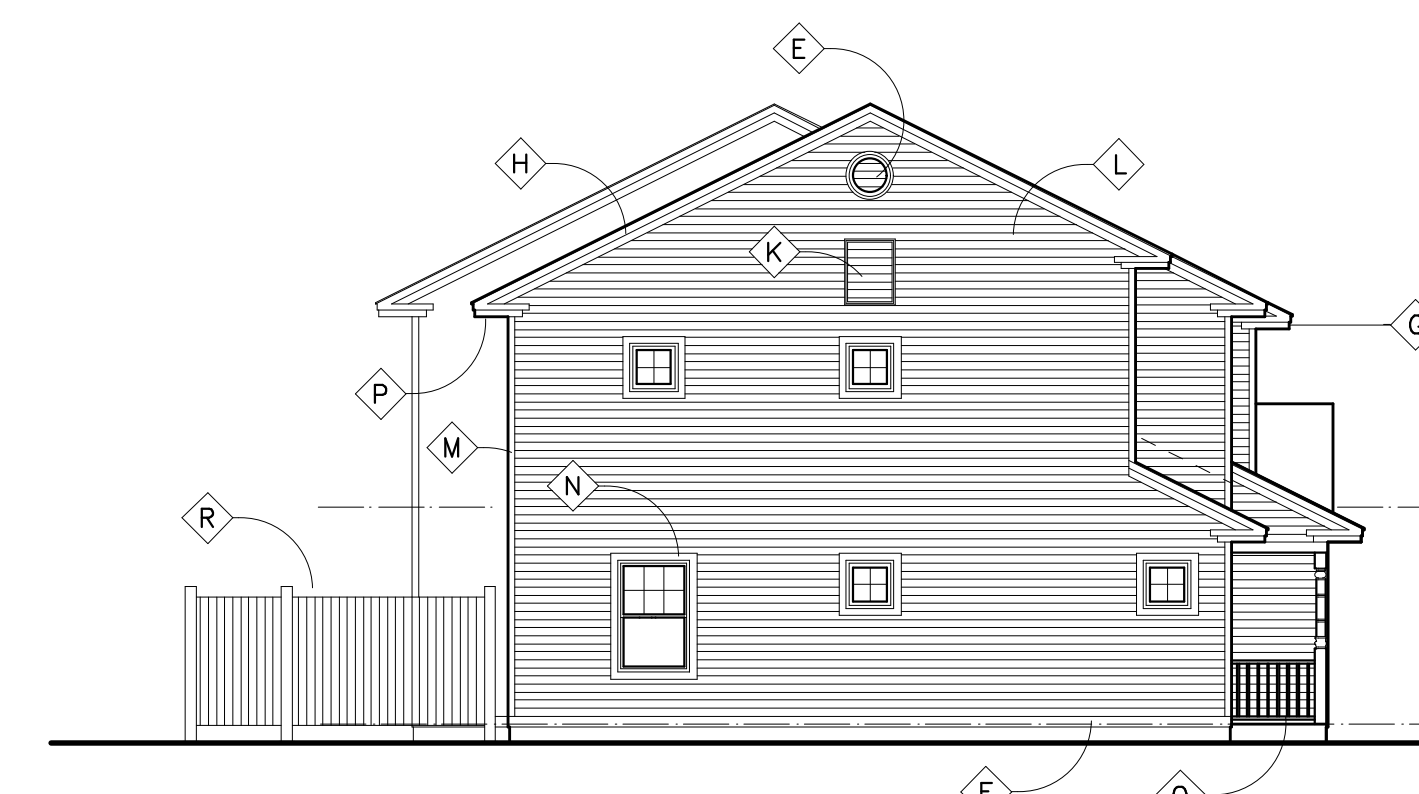
FRONT ELEVATION



RIGHT SIDE ELEVATION



REAR ELEVATION



LEFT SIDE ELEVATION

EXTERIOR ELEVATIONS LEGEND

- A - W.R. GRACE "ICE AND WATERSHIELD" (TYP)
 - 3 LAYERS AT VALLEYS
 - 2 LAYERS AT EAVES
 - 1 LAYER AT ROOF / WALL INTERSECTIONS
- B - .032 ALUM STEP FLASHING TYPICAL AT ROOF/WALL INTERSECTIONS (INSTALL OVER ICE AND WATER-SHIELD AS ALSO SPECIFIED)
- C - CONTINUOUS RIDGE VENT (TYP @ ALL CONTINUOUS RIDGE LINES)
- D - 25 YEAR ORGANIC FELT BASE ASPHALT SHINGLES (TYP)
- E - FYRON 661813 - 18" ROUND LOUVER - CENTERED 3'-0" DOWN FROM PEAK
- F - 5/4x6 SOLID PVC WATER TABLE - COLOR "C"
- G - 1X4 OVER 5/4X8 SOLID PVC FASCIA TRIM - COLOR "C"
- H - 1X4 OVER 5/4X8 SOLID PVC RAKE TRIM - COLOR "C"
- J - SOLID 5/4x6 PVC FRIEZE BOARD - COLOR "C"
- K - 24"Wx36"H ATTIC ACCESS PANEL
- L - DOUBLE 4" VINYL CLAPBOARD SIDING, J CHANNELS AND INTERIOR CORNER POSTS TO MATCH SIDING COLOR - CERTAINTED MONOGRAM OR EQUAL - MATTE FINISH COLOR AS SELECTED BY ARCHITECT.
- M - SOLID PVC 5/4x6 & 5/4x5 CORNER BOARD - MATTE FINISH COLOR "C"
- N - INTEGRAL 3 1/2" VINYL WINDOW TRIM. (SEE WINDOW SCHEDULE)
- P - VENTED VINYL BEADBOARD SOFFIT W/ MINIMUM VENT AREA OF 5.5 SQUARE INCHES PER SQUARE FOOT OF PANEL, CERTAINTED CERTAVENT TRIPLE FOUR, FULLY VENTED OR EQUAL, MATTE FINISH COLOR "C". (HORIZONTAL - NOT SEEN ON ELEVATIONS)
- Q - REINFORCED PVC GUARDRAIL SYSTEM.
- R - PRIVACY FENCE - REFER TO CIVIL DRAWINGS FOR SIZES AND LOCATIONS.
- S - REFER TO MECHANICAL DRAWINGS FOR LOCATIONS AND SIZES OF LOUVERS.
- T - 6X6 PAINTED WOOD COLUMN - BROSCO #3168



CWS Architects

Architecture
Space Planning
Value Design

434 Cumberland Avenue
Portland, ME 04101
Phone: (207)774-4441
Fax: (207)774-4016

www.CWSarch.com

Owner:

YALE COURT L.P.

C/O
Yale Court Development Company, LLC
Portland, ME

Contractor:

YALE COURT APARTMENTS

YALE COURT
PORTLAND, MAINE

Project No: 02.405 YSA

Drawing Title:

**BUILDING A & B
ELEVATIONS**

Scale: 1/8" = 1'-0"

Date: January 29, 2003

Revisions:

Drawing Number:

A3.1