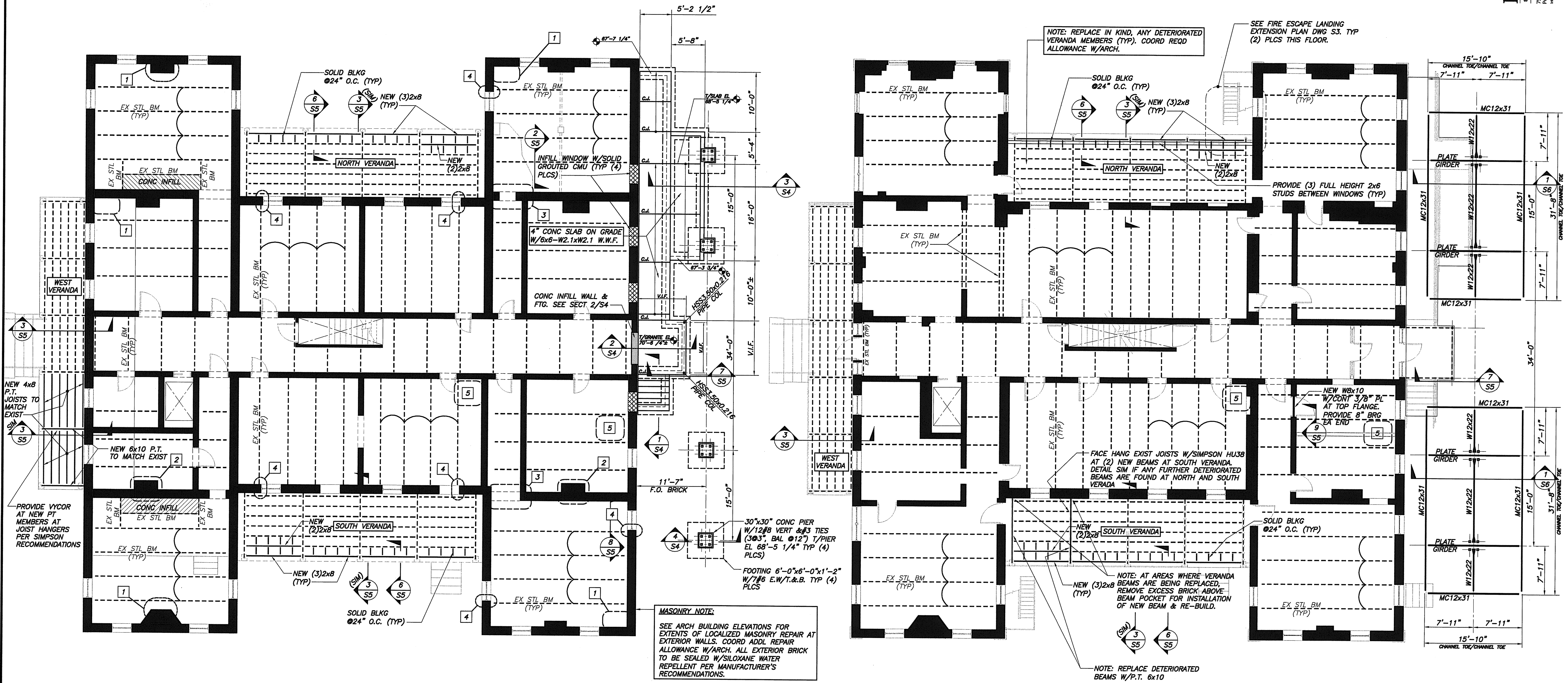


Apr 25, 2006 - 1:29pm

H:\PROJECTS_W01400-1499_1454 Martins Point Marine Hospital Renovation -ACAD_Smect_BID_1454ALL.dwg

NOTE: NEW STEEL LINTELS ARE REQD AT ALL LOCATIONS WHERE EXIST FLOOR BEAMS FRAME OVER EXIST WINDOWS. LOCATIONS AND FREQUENCY OF CONDITION UNKNOWN. G.C. SHALL EXPOSE FLOOR FRAMING OVER EACH WINDOW AT LOAD BEARING WALLS AND VERIFY LOCATION OF FLOOR BEAM. SEE SECT 1/SS FOR ADDL INFO. TYPICAL AT SECOND, THIRD & ATTIC LEVELS.

NOTE: CANOPY SHEATHING & ATTACHMENT BY OTHERS. SHEATHING TO BE DESIGNED FOR A BALANCED SL: 50 PSF & A DRIFT W/MAX INTENSITY OF 90 PSF, TAPERING TO 0 PSF OVER 16' FROM FACE OF BUILDING. SUPERIMPOSE DRIFT LOAD ON BALANCED SNOW LOAD. DESIGN SHEATHING FOR WIND CRITERIA IDENTIFIED ON DWG S1. SUBMIT DESIGN FOR REVIEW. DESIGN MUST BE STAMPED BY A PROFESSIONAL ENGINEER REGISTERED IN THE STATE OF MAINE. SEE ARCH DWGS FOR ADDL INFO.



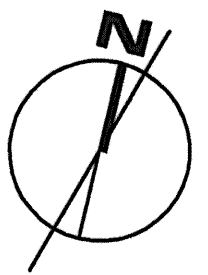
EXIST FIRST FLOOR FRAMING PLAN
1/8"=1'-0"

- KEY NOTES (SEE SCHEDULE) INDICATE WORK BELOW INDICATED FRAMING LEVEL.
- INDICATES SPAN OF EXIST BRICK ARCH FLOOR.

- KEY NOTES SCHEDULE:**
- REBUILD DETERIORATED/DAMAGED BRICK.
 - REBUILD MISSING SHAFT WALL(S).
 - REBUILD BRICK ARCH
 - INCREASE BEAM BEARING PER SECTION 8/SS
 - STEEL TIE RODS MAY BE PRESENT WITHIN BRICK ARCH FLOOR SYSTEM. DO NOT CUT TIE RODS. SCAN AREAS OF BATHROOM PLUMBING PENETRATIONS AND ANY OTHER PENETRATION LOCATIONS WITH REBAR LOCATOR PRIOR TO CUTTING. RE-LOCATE PENETRATIONS AS REQD.
 - MASONRY CHIMNEY/ROOF MEMBER SUPPORT IS PRESENT AT ATTIC & NOTICEABLY ABSENT AT THIRD FLOOR. G.C. SHALL EXPOSE CONDITION AT CHIMNEY/BRICK ARCH INTERFACE AT UPPER PORTION & NOTIFY ENGINEER OF FINDINGS.

EXIST SECOND FLOOR FRAMING PLAN
1/8"=1'-0"

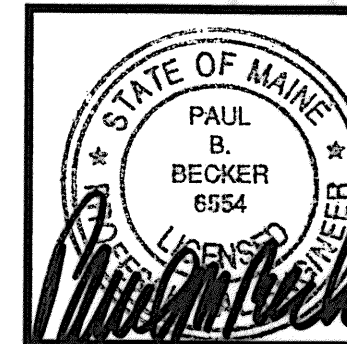
- KEY NOTES (SEE SCHEDULE) INDICATE WORK BELOW INDICATED FRAMING LEVEL.
- INDICATES SPAN OF EXIST BRICK ARCH FLOOR.



BECKER
Structural Engineers, Inc.
25 York Street
Portland, ME 04101-4701
Tel: 207-679-1888
Fax: 207-775-0899
www.beckerinc.com

COPYRIGHT 2006
PDT Architects
Reuse or reproduction of the contents of this document is not permitted without written permission of PDT Architects.

Marine Hospital Renovation
MARTIN'S POINT - PORTLAND, MAINE



JOB NO.
05-108

DRWN. CHK.
APP. DSB

SCALE:
NOTED

ISSUE
BID DOCUMENTS
24 April 2006

TITLE
EXIST FIRST &
SECOND FLOOR
FRAMING PLANS

SHEET

S2

ARCHITECTURE
INTERIOR DESIGN
PLANNING
PDT ARCHITECTS
49 PARKWAY STREET
PORTLAND, ME 04101
207-775-0899
207-775-2674 FAX
www.pdtarchitects.com