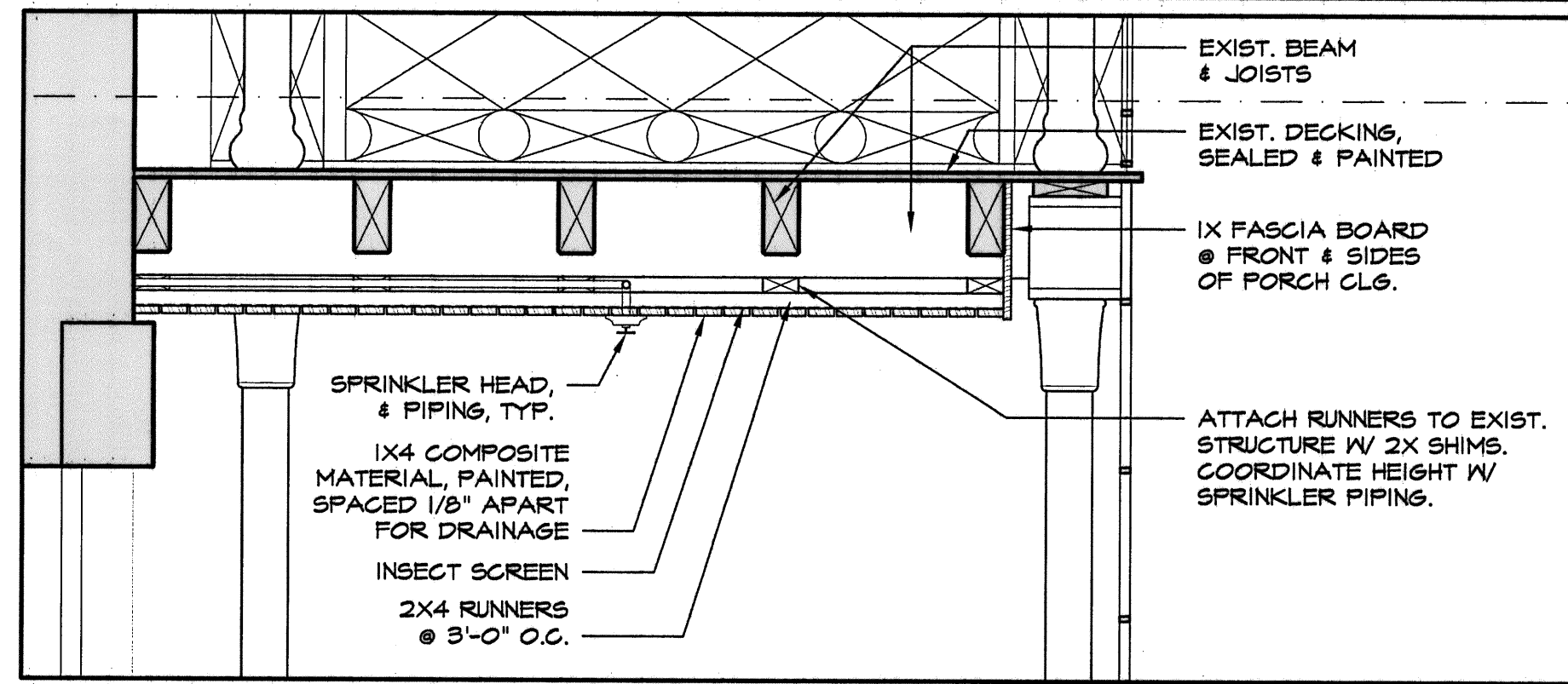
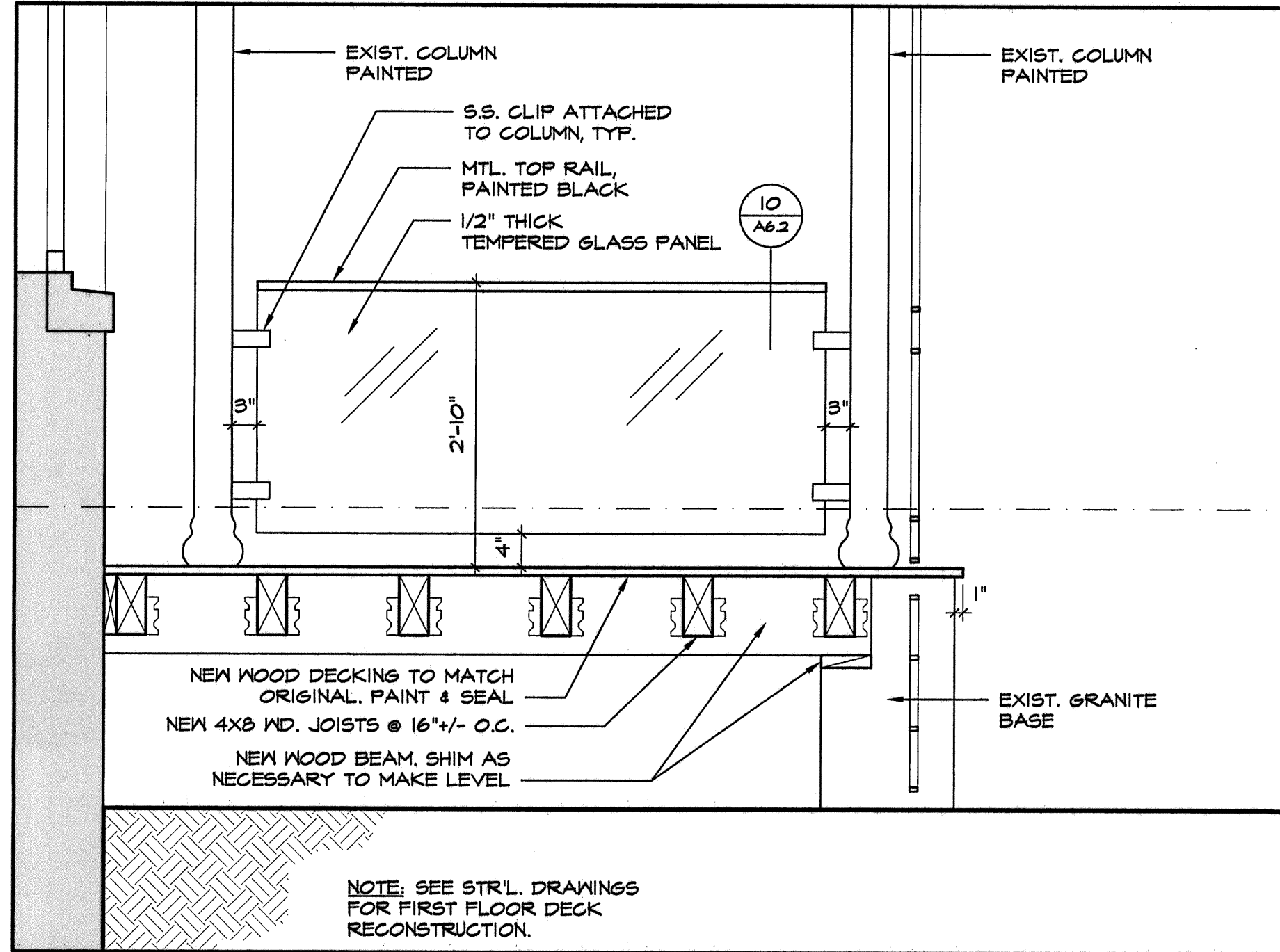


Apr. 25, 2006 - 1:02:14am

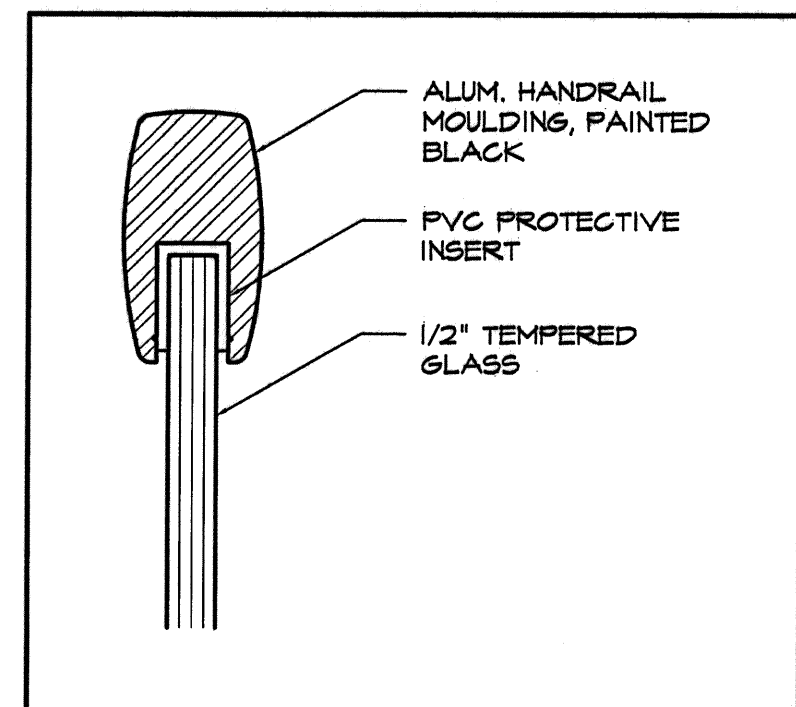
H:\Master Proj\Files2\Martin's Point - Marine Hospital\Existing Conditions\CAD\MH sections-details.dwg



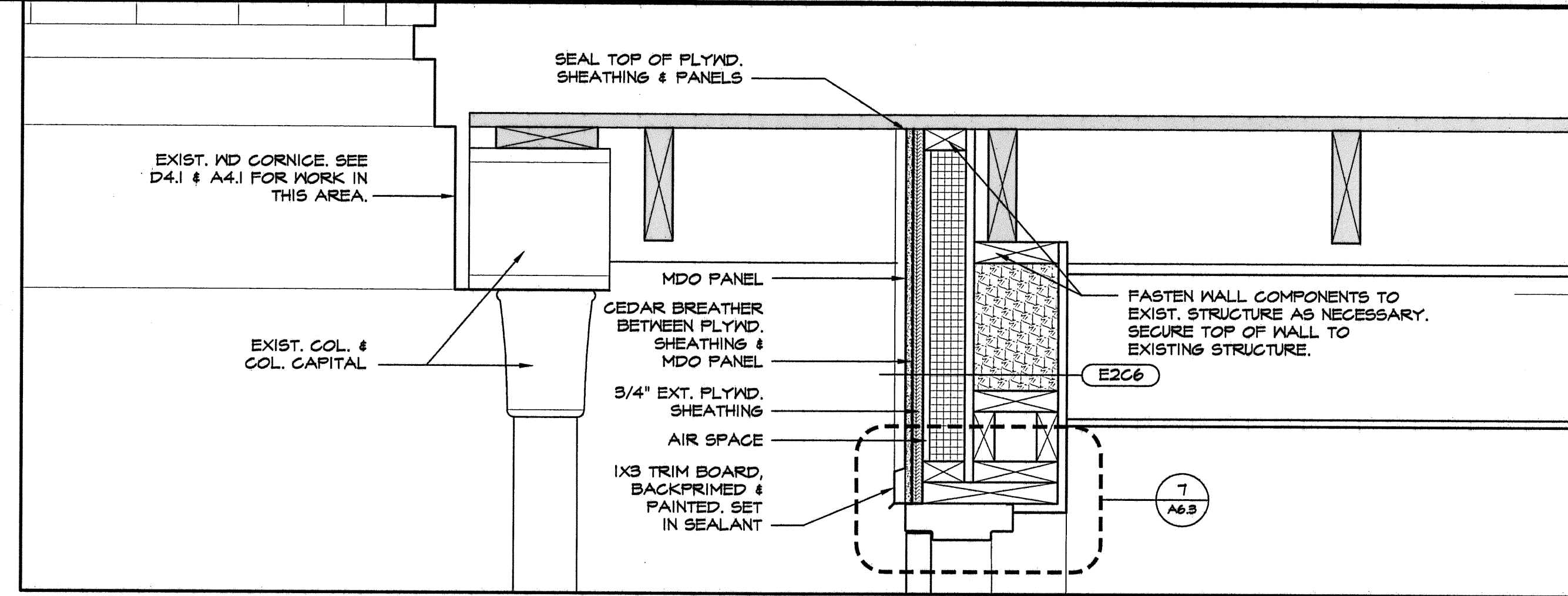
8 EXTERIOR SOFFIT DETAIL
A6.2 3/4" x 1'-0"



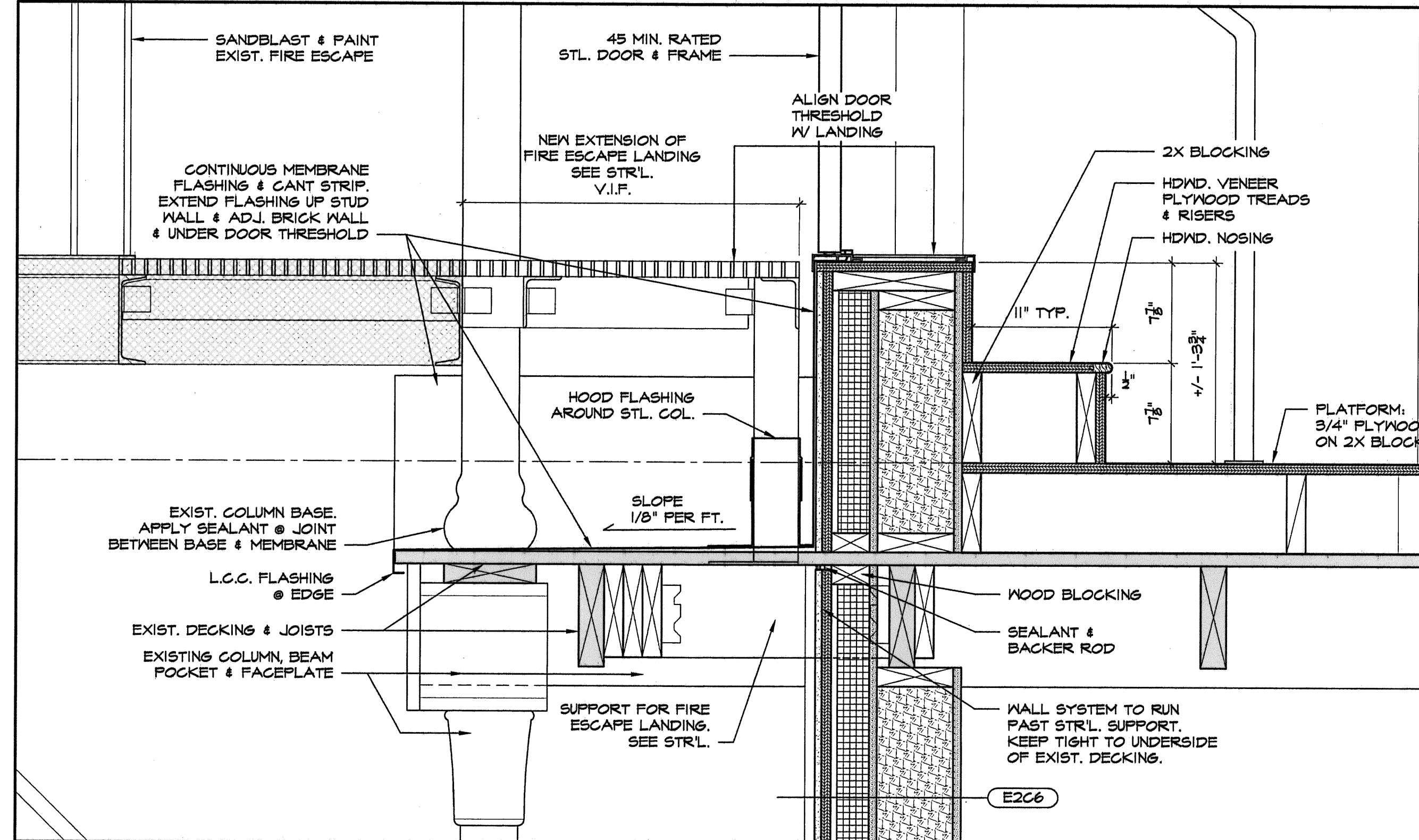
9 EXTERIOR SOFFIT DETAIL
A6.2 3/4" x 1'-0"



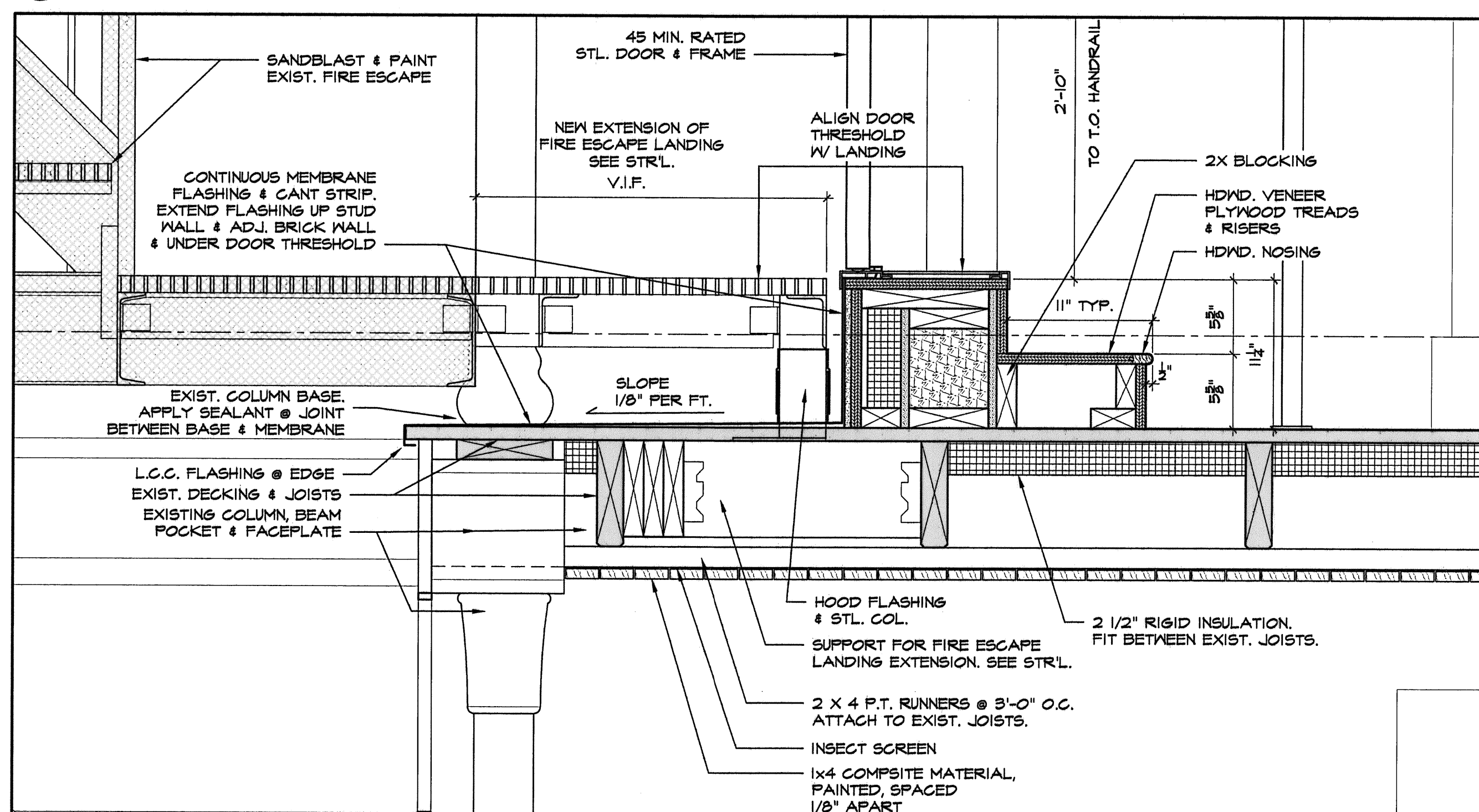
10 GLASS HANDRAIL DETAIL
A6.2 6" x 1'-0"



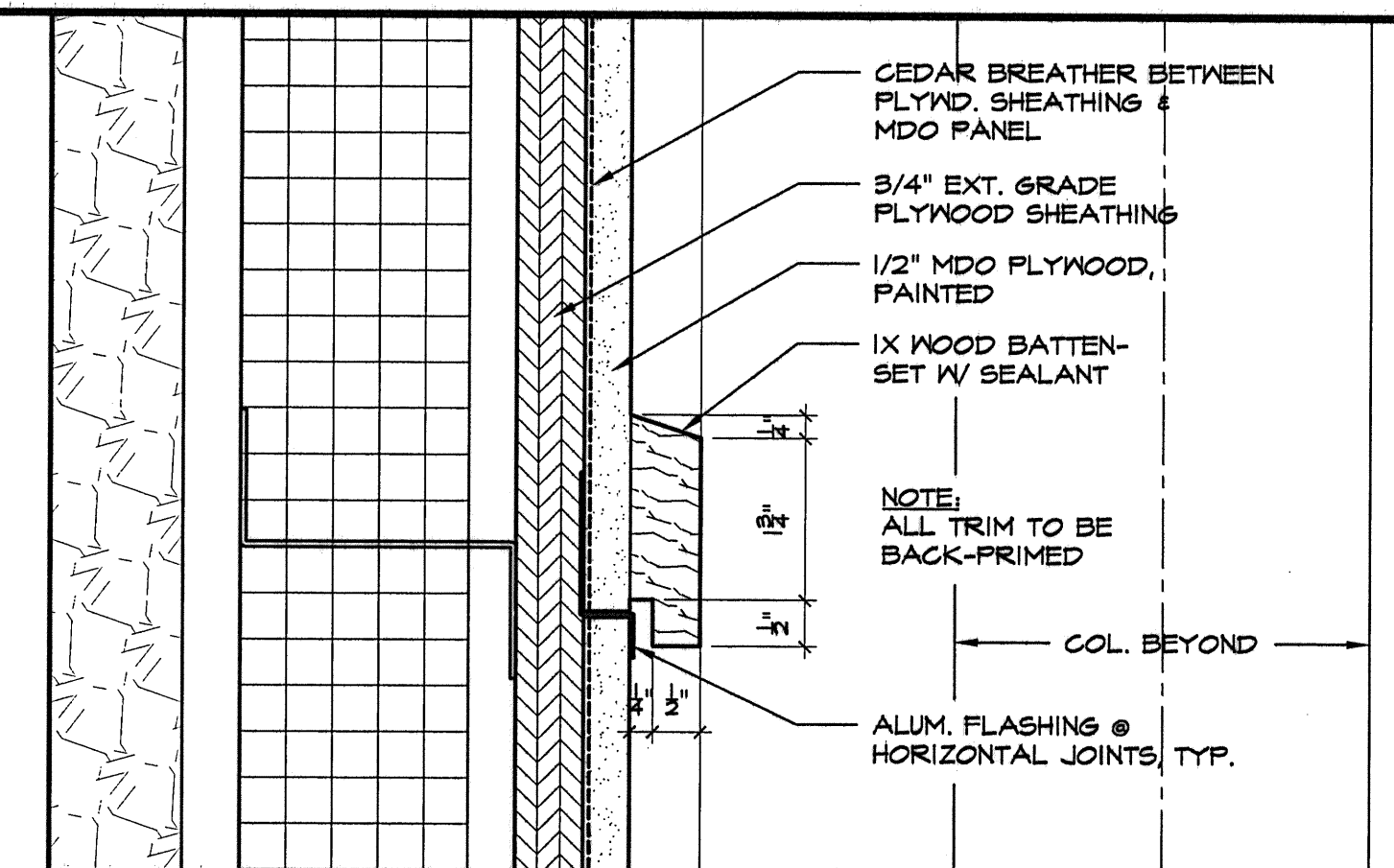
5 EXTERIOR SOFFIT DETAIL
A6.2 1/2" x 1'-0"



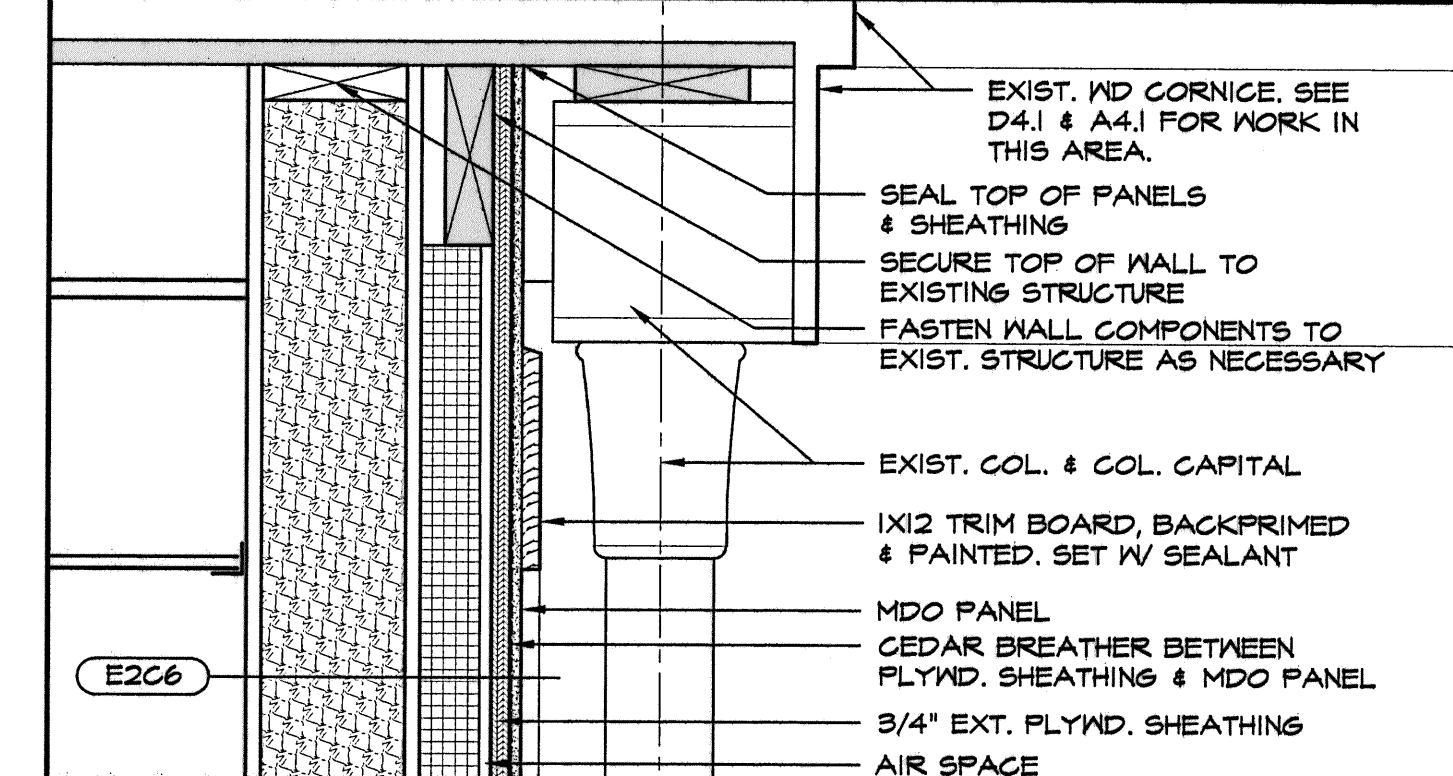
6 3RD FLOOR LANDING @ FIRE ESCAPE
A6.2 1/2" x 1'-0"



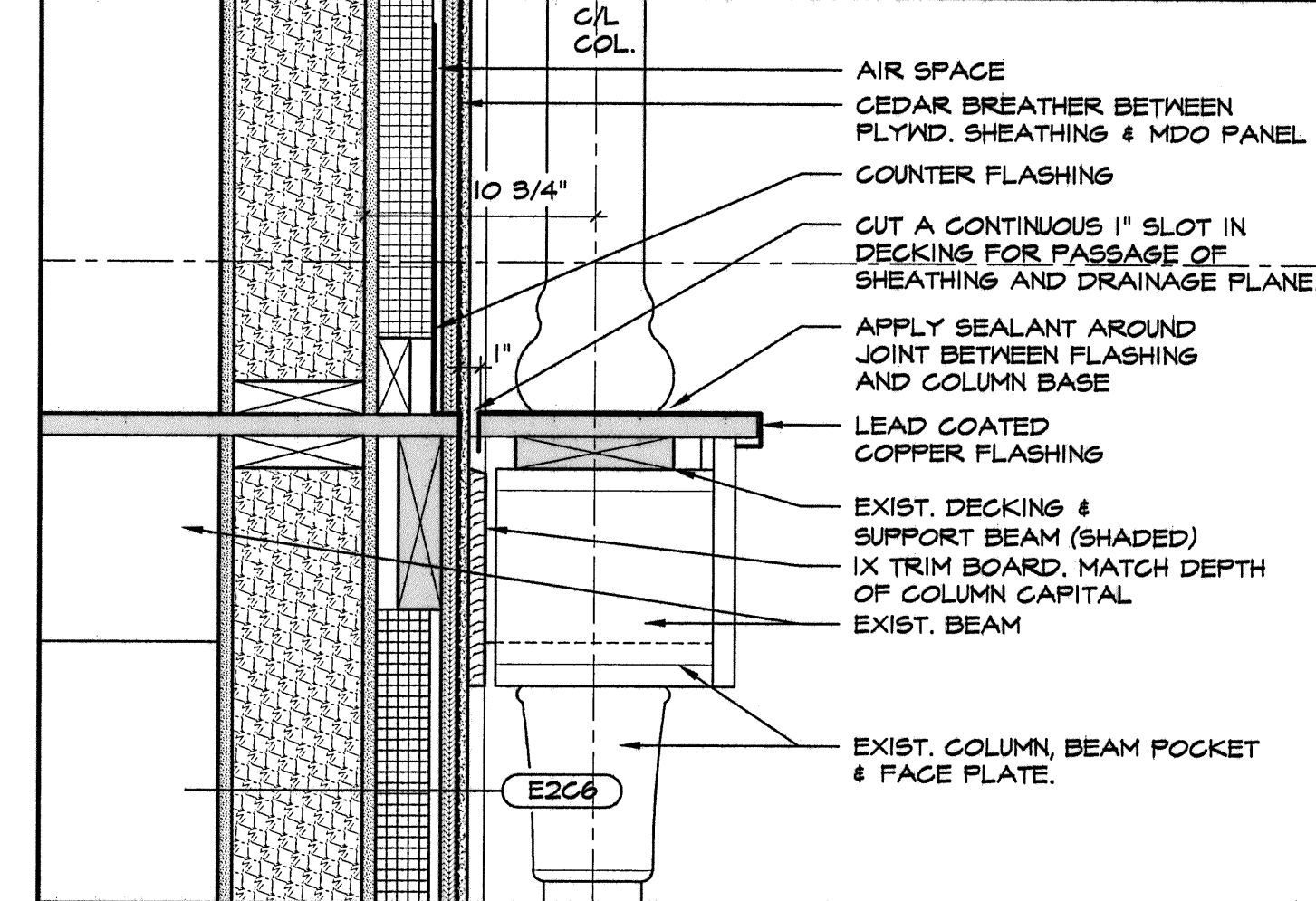
7 2ND FLOOR LANDING @ FIRE ESCAPE
A6.2 1/2" x 1'-0"



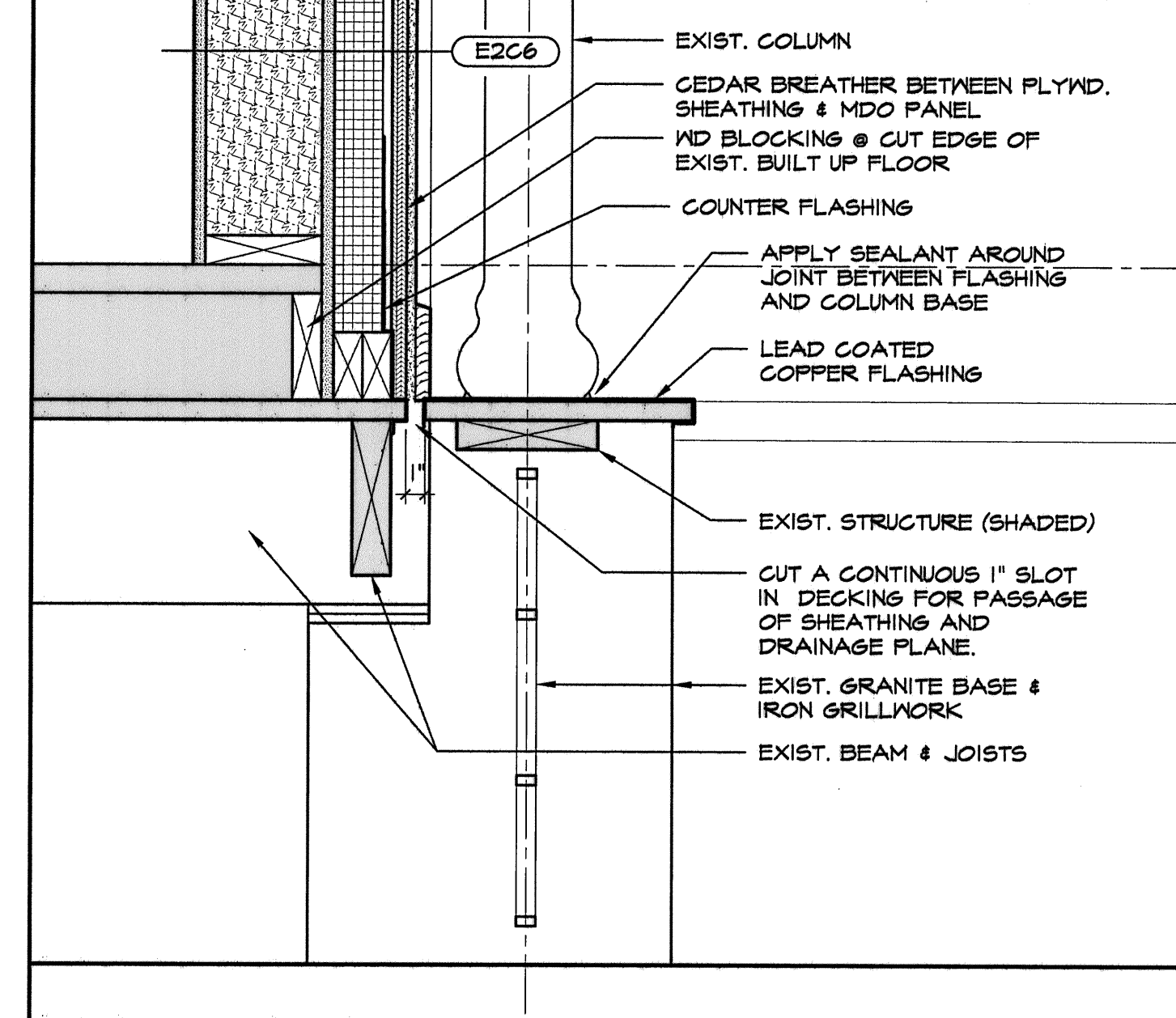
1 BATTEN DETAIL
A6.2 6" x 1'-0"



2 WALL @ CORNICE DETAIL
A6.2 1/2" x 1'-0"



3 DECK FLOOR EDGE DETAIL
A6.2 1/2" x 1'-0"



4 1ST FLOOR EDGE DETAIL
A6.2 1/2" x 1'-0"

ARCHITECTURE
INTERIOR DESIGN
PLANNING
P D T ARCHITECTS
49 PARK STREET
PORTLAND, ME 04101
207.775.4899
207.775.8048 FAX

COPYRIGHT 2006
PDT Architects
Reuse or reproduction of the
contents of this document is not
permitted without written
permission of PDT Architects.

Marine Hospital Renovation
MARTIN'S POINT - PORTLAND, MAINE

JOB NO. 05-108
DRWN. CHK EJR
SCALE: AS NOTED
ISSUE Bid Documents 24 April 2006
TITLE WALL SECTION DETAILS
SHEET A6.2