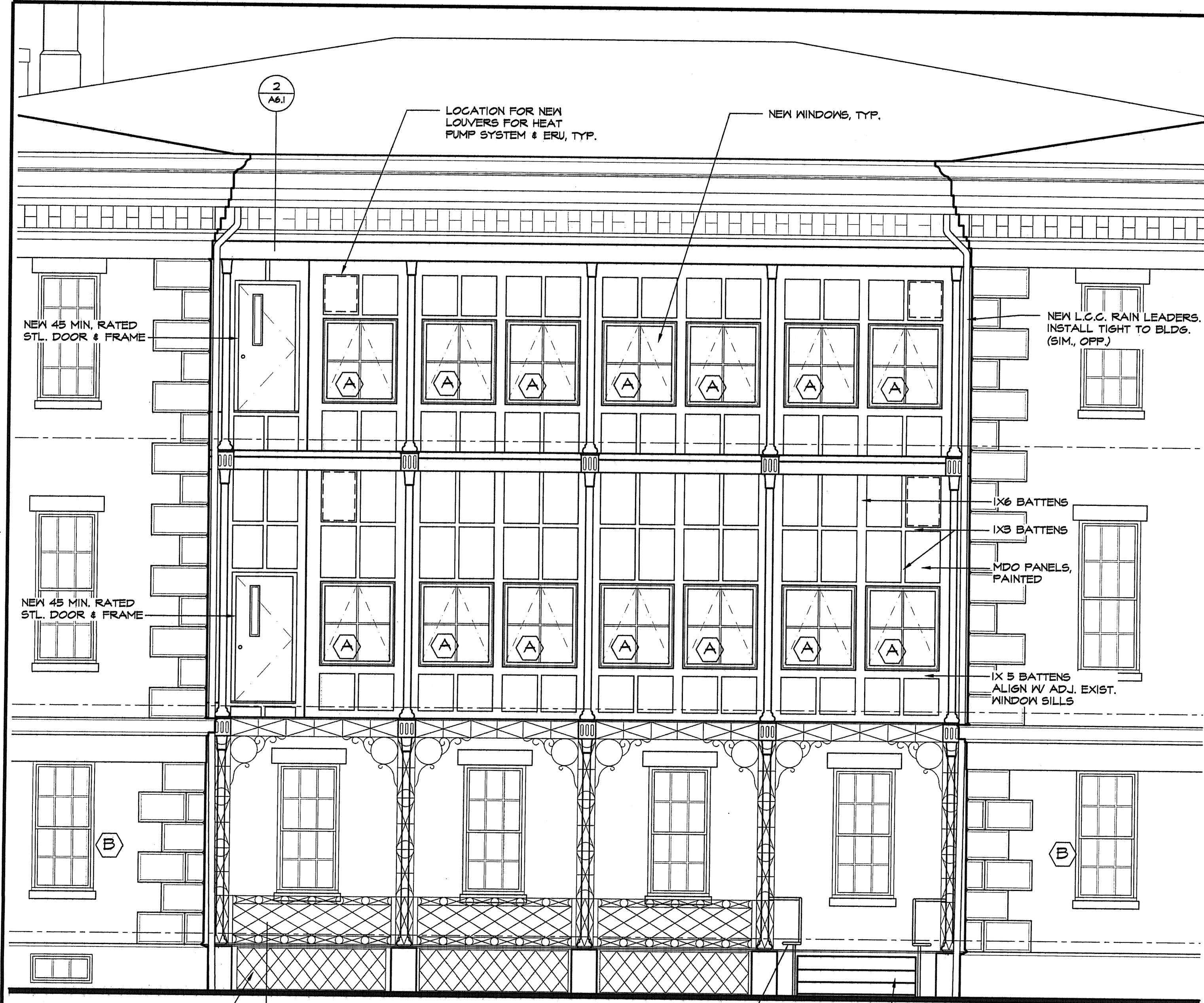
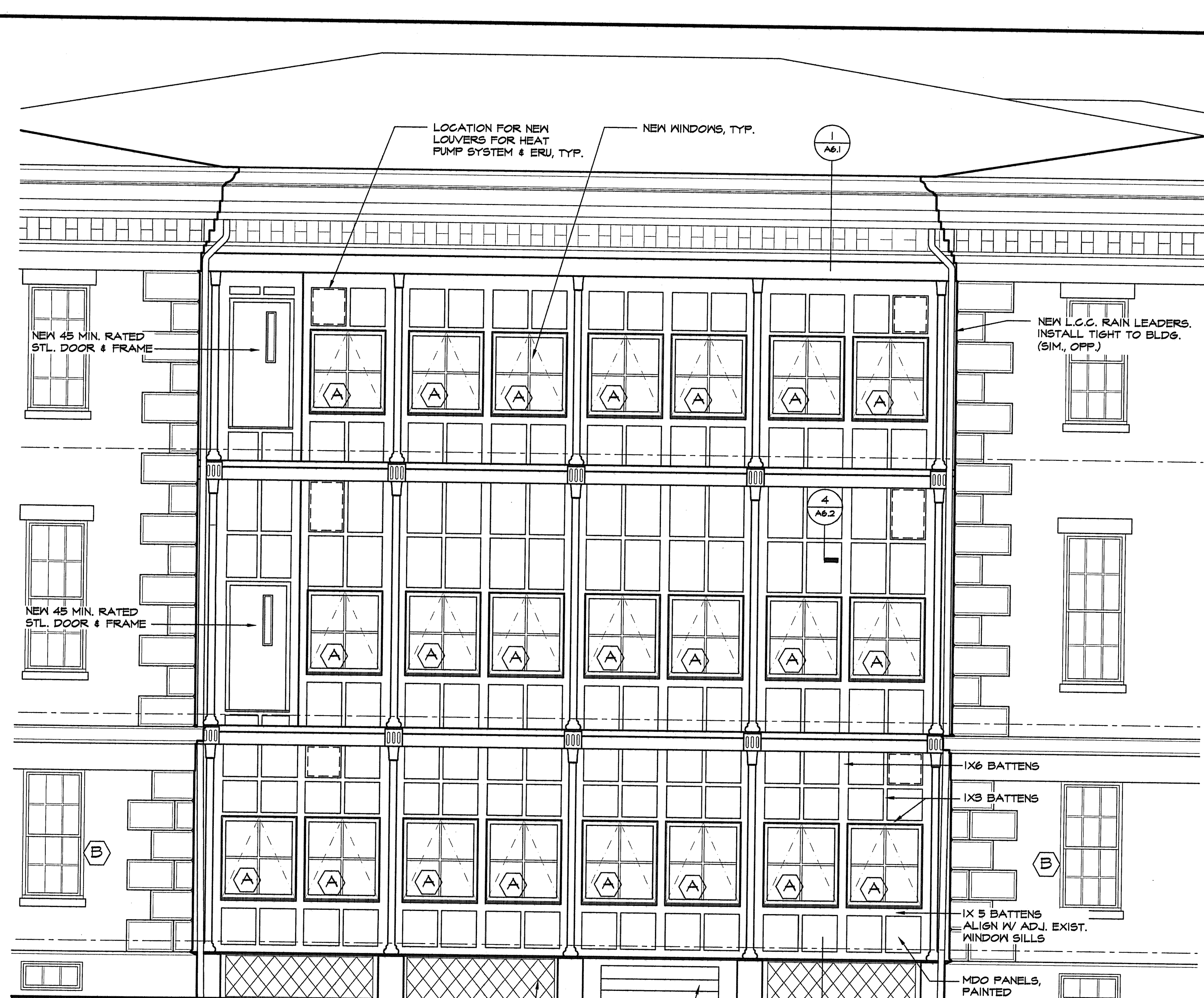


Apr 25, 2006 - 9:30am

H:\Master Proj Files\2\Martin's Point - Marine Hospital (Existing Conditions) CAD\MEI extn elev.dwg



1 PROPOSED SOUTH ELEVATION
A4.3 1/4" = 1'-0"



2 PROPOSED NORTH ELEVATION
A4.3 1/4" = 1'-0"



3 PROPOSED EAST ELEVATION - ADA ENTRY RAMP
A4.3 1/4" = 1'-0"

ARCHITECTURE
INTERIOR
PLANNING
P D T
ARCHITECTS
49 DARTMOUTH STREET
PORTLAND, ME 04101
207.775.2604 FAX

COPYRIGHT 2006
PDT Architects
Reuse or reproduction of the
contents of this document is not
permitted without written
permission of PDT Architects.

Marine Hospital Renovation
MARTIN'S POINT-PORTLAND, MAINE

JOB NO.
05-108

DRWN. CHK
EJR

SCALE:
1/4"=1'-0"

ISSUE
Bid Documents
24 April 2006

TITLE
PARTIAL
ELEVATIONS

SHEET

A4.3