

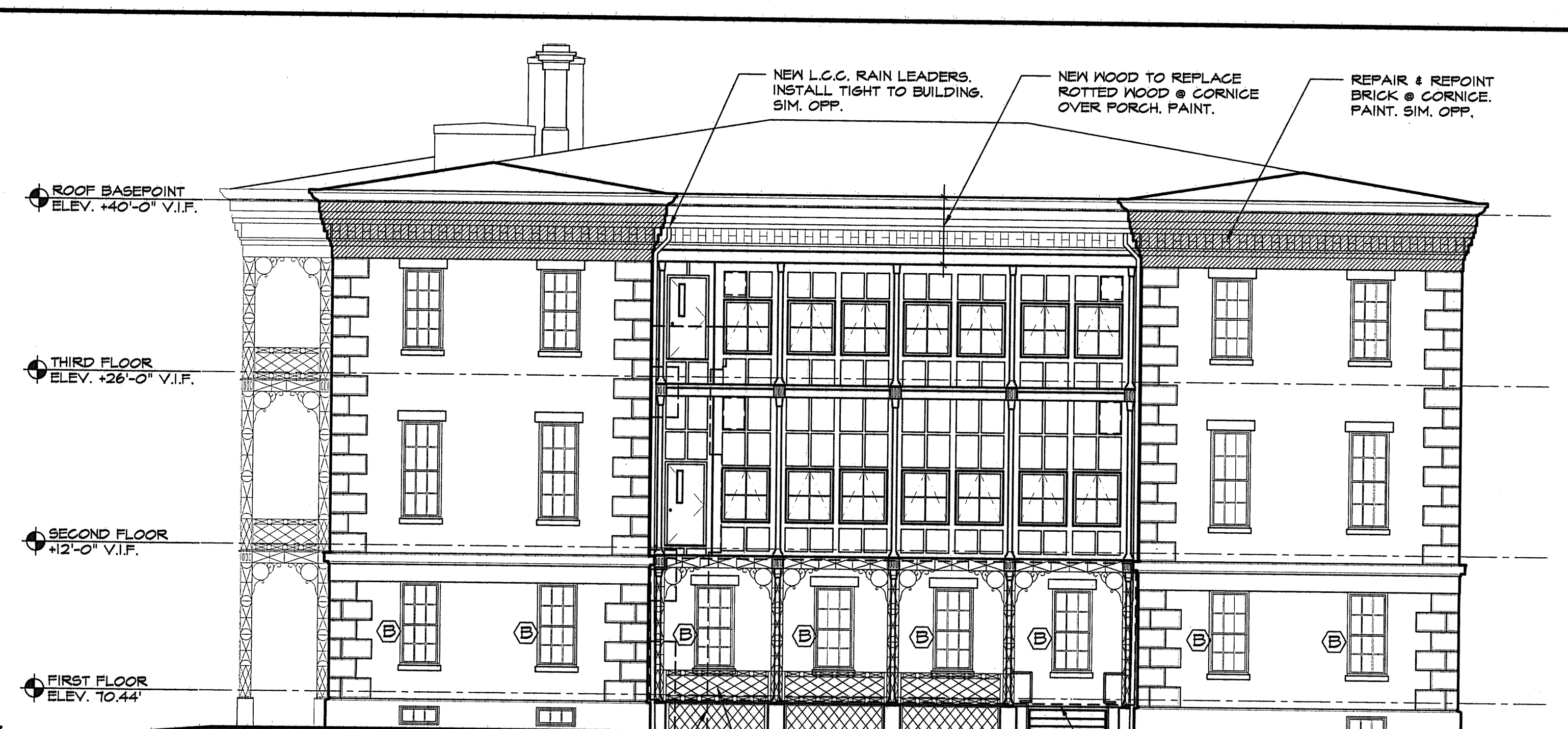
Marine Hospital Renovation
MARTIN'S POINT - PORTLAND, MAINE

JOB NO. 05-108
DRWN. CHK EJR
SCALE: AS NOTED
ISSUE Bid Documents 24 April 2006
TITLE ELEVATIONS
SHEET

A4.1



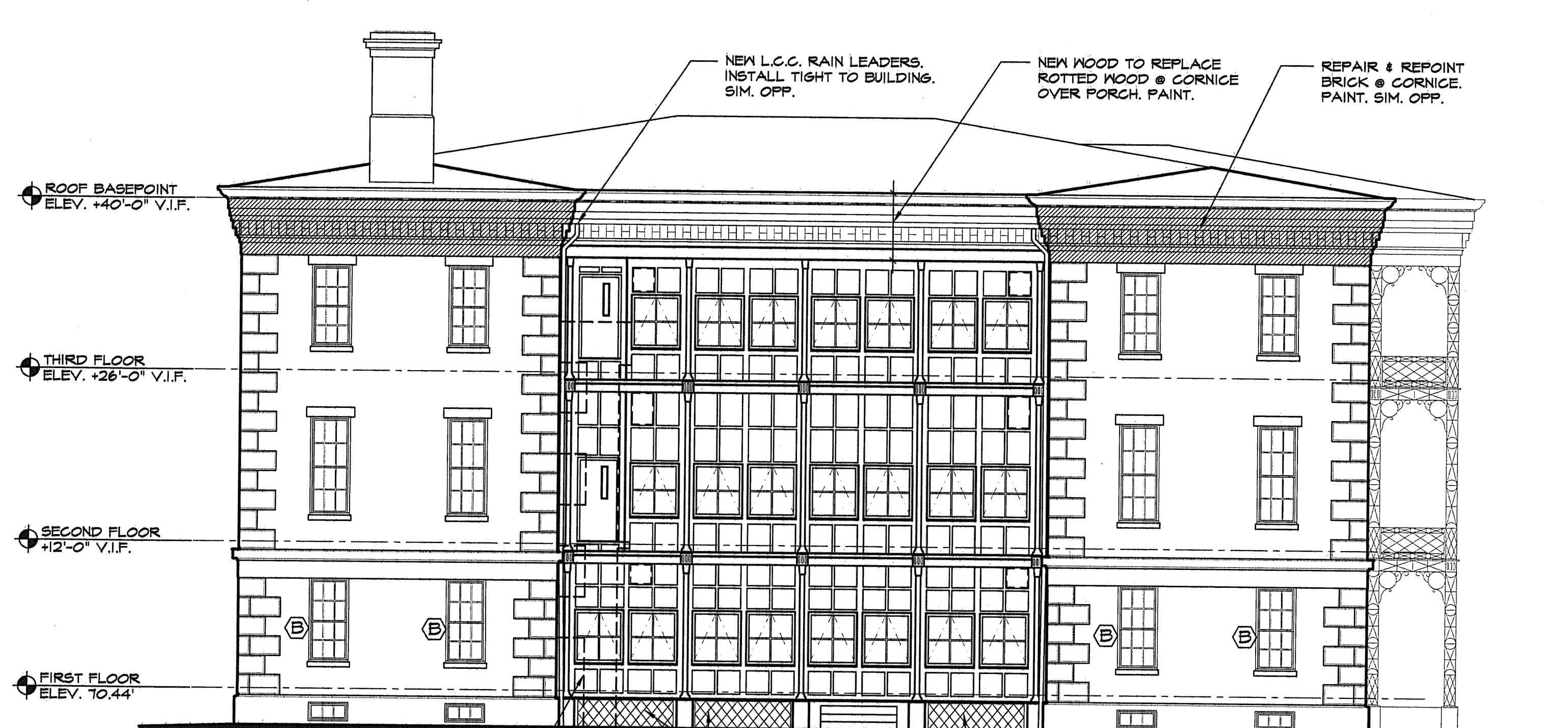
1 PROPOSED WEST ELEVATION
A4.1 1/8" = 1'-0"



2 PROPOSED SOUTH ELEVATION
A4.1 1/8" = 1'-0"



3 PROPOSED EAST ELEVATION
A4.1 1/8" = 1'-0"



4 PROPOSED NORTH ELEVATION
A4.1 1/8" = 1'-0"

EXTERIOR PAINT COLORS
ENTIRE CORNICE: OFF-WHITE
WINDOW SASH & MUNTINS (EXCEPT INFILL WINDOWS): BLACK
BRICK MOULD & TRIM: OFF-WHITE
CAST IRON: GLOSS BLACK
NEW CEILING @ EAST PORCH: OFF WHITE
ALL DECKING: MEDIUM GREY
INFILL WALLS: CADET GREY (MATCH INFILL WINDOWS)

Apr 25, 2006 - 9:29am
HA\Menuer Proj Files\2\Marine's Point - Maine Hospital\Existing Conditions\CAD\MEH extn elev.dwg