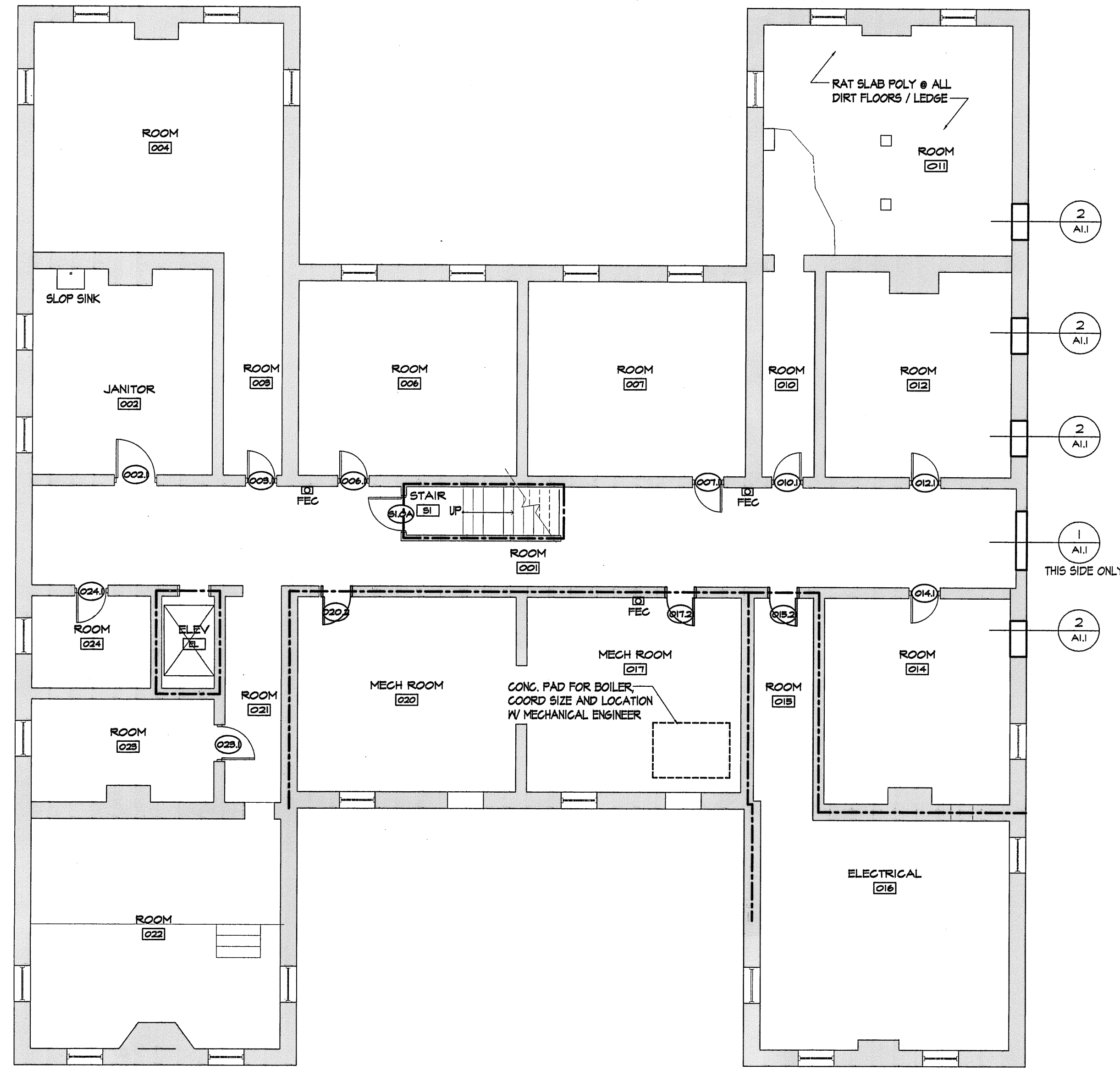
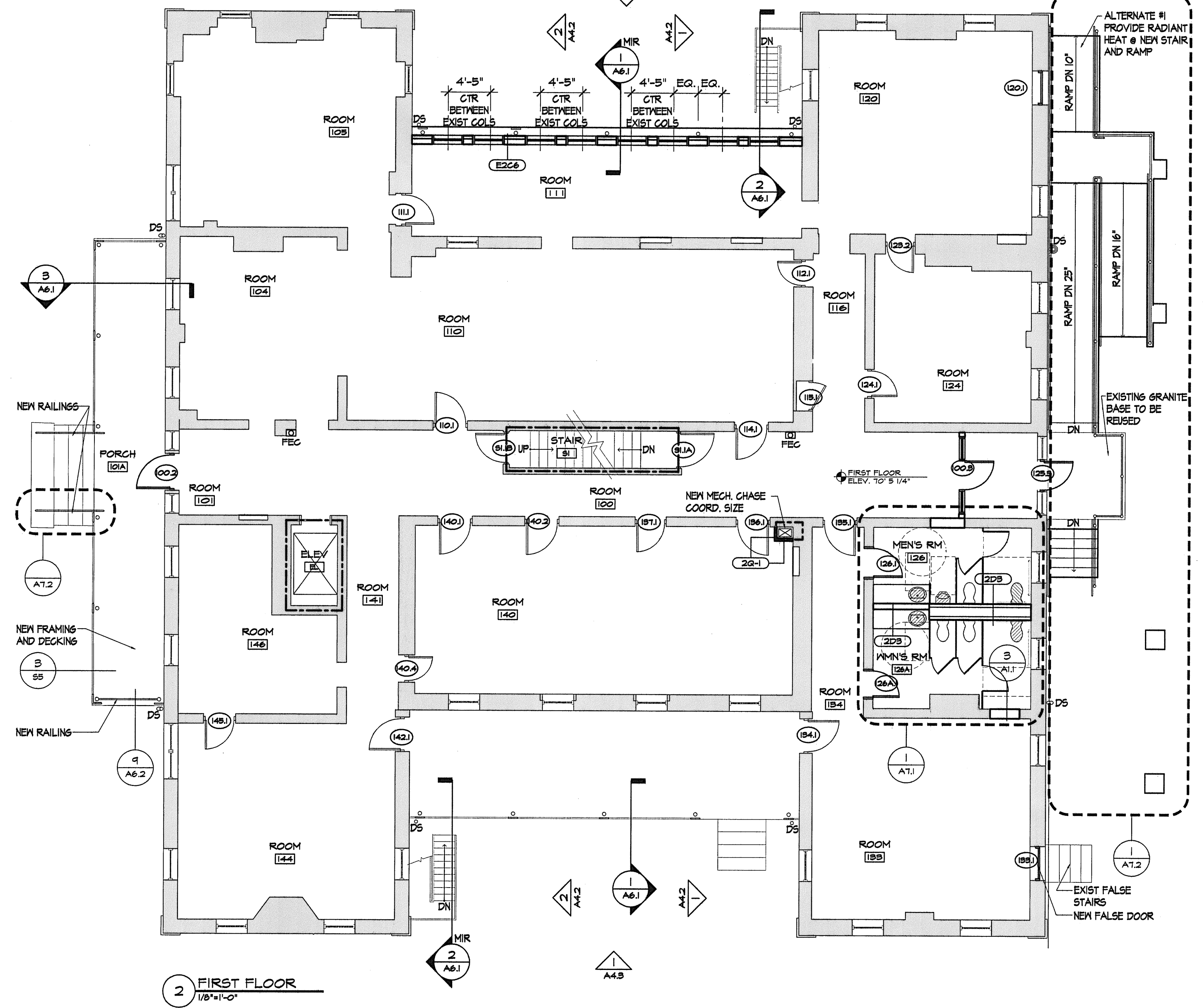


Apr. 25, 2006 - 10:55am

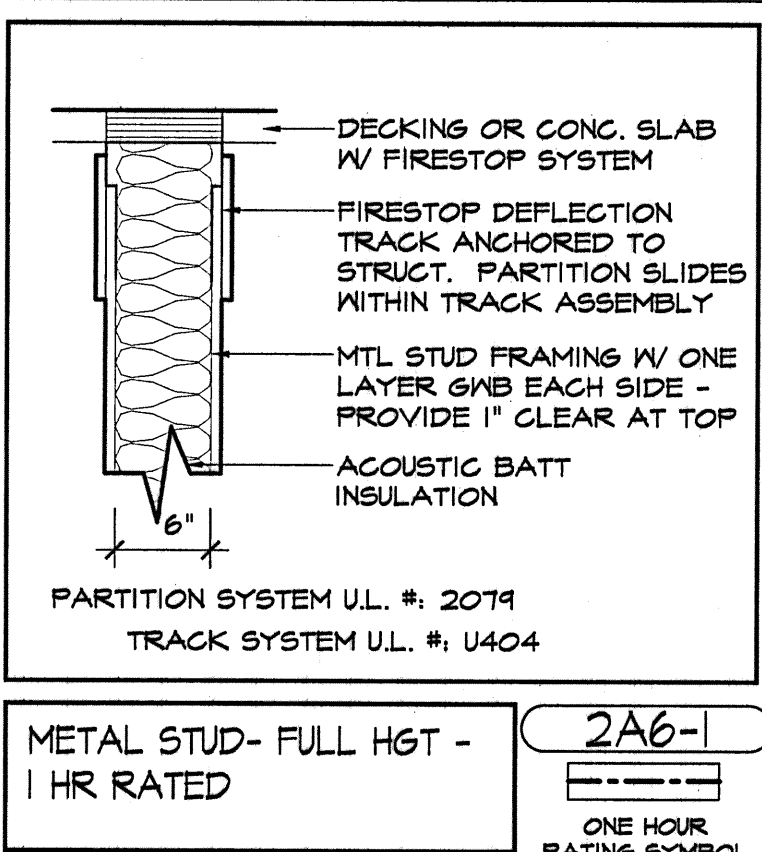
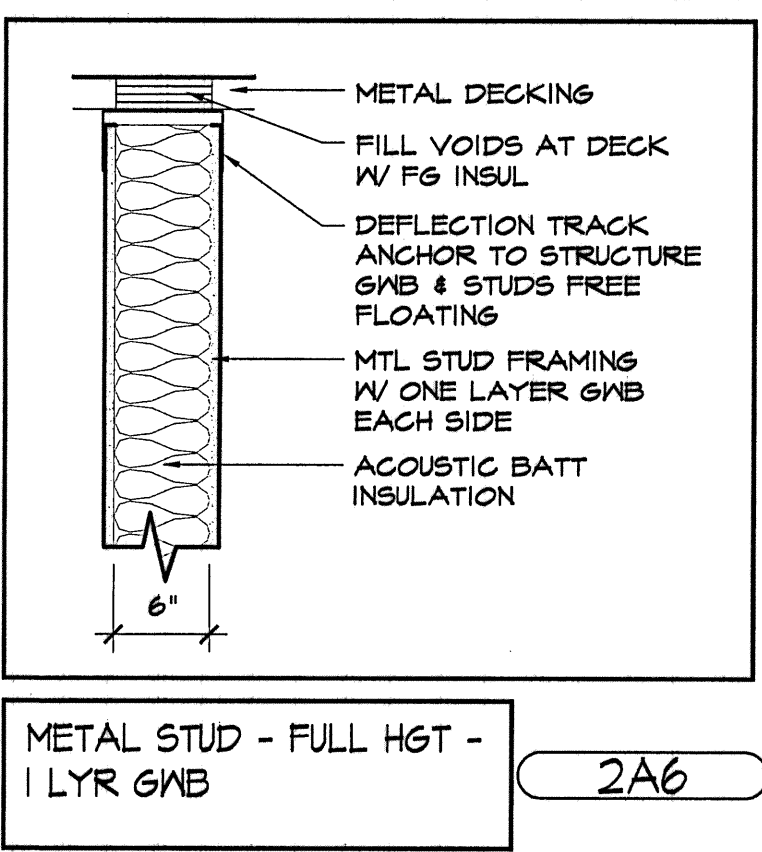
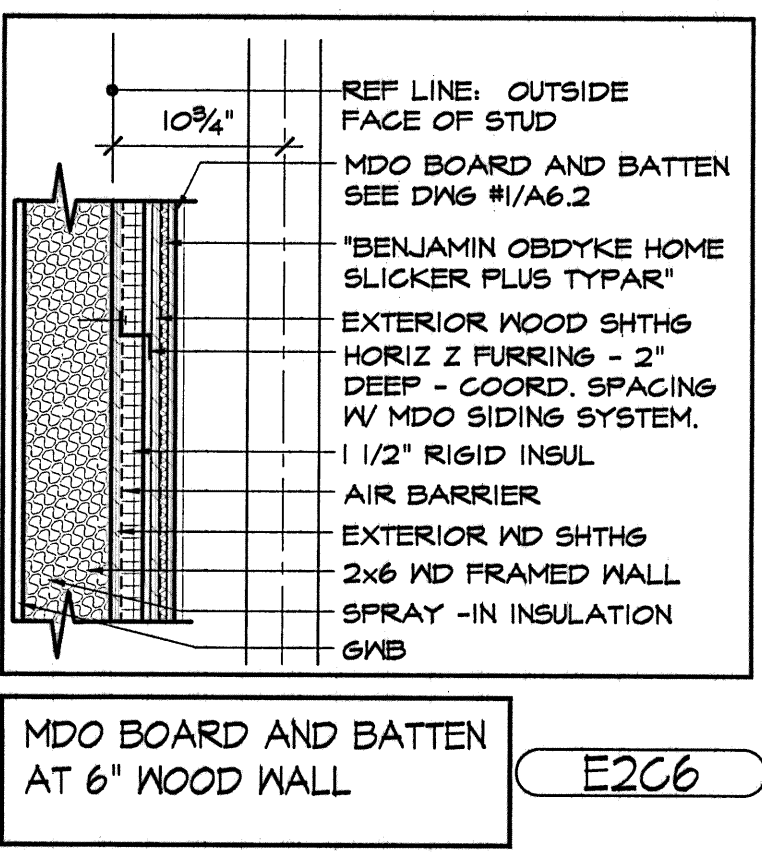
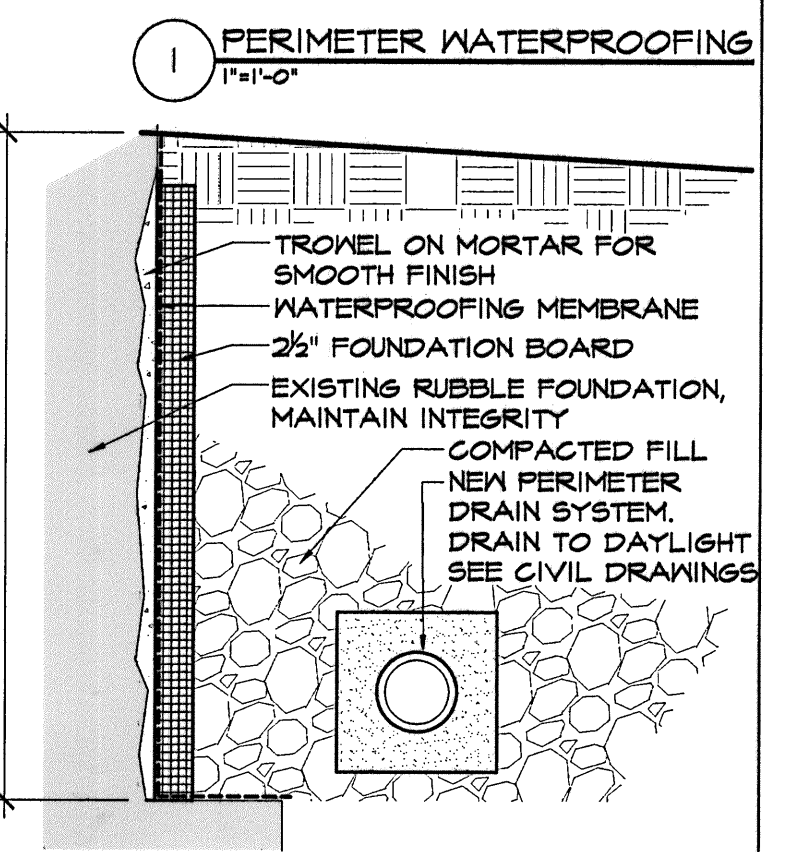
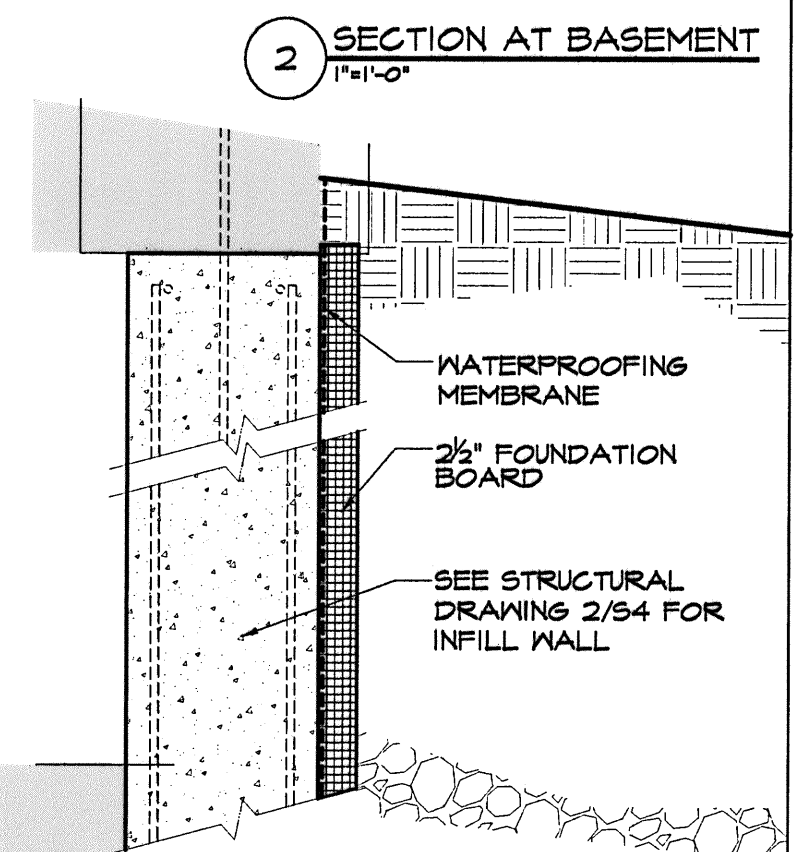
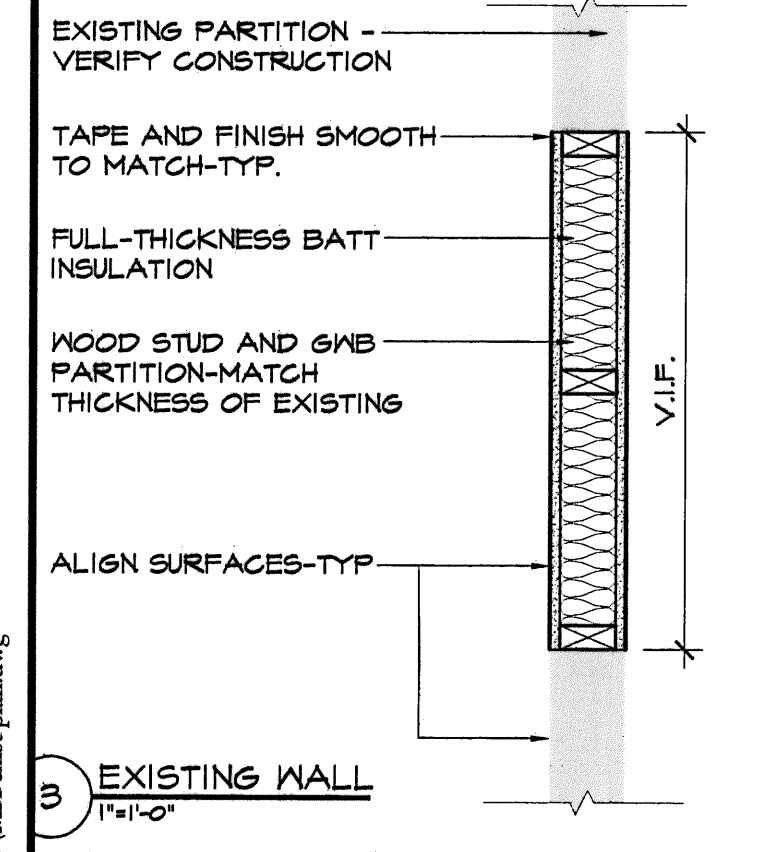
H:\Master Proj Files2\Marine's Point - Marine Hospital\Existing Conditions\CAD\MH exist plan.dwg



APPROX LOCATION OF TRANSFORMER ABOVE
1 BASEMENT
 1/8"=1'-0"

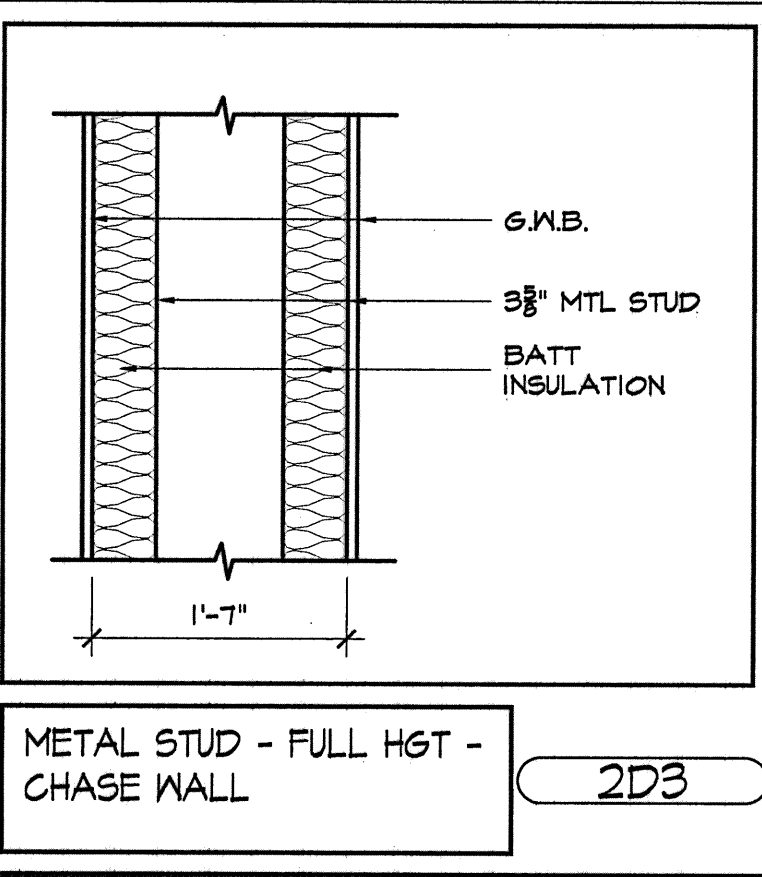
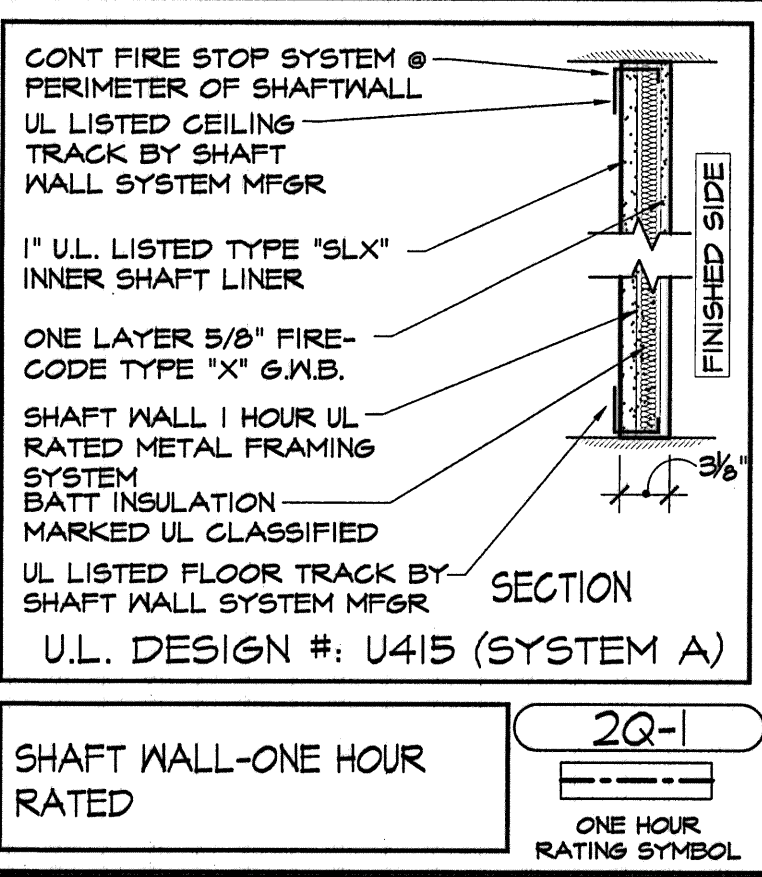


2 FIRST FLOOR
 1/8"=1'-0"



GENERAL PLAN NOTES

- THE DRAWINGS USE A SYSTEM OF KEYED NOTES ON PLANS, ELEVATIONS AND DETAILS. INSTRUCTIONS FOR SPECIFIC COMPONENTS OF THE WORK ARE KEYED TO THE DRAWINGS. BUILDING SYSTEMS (PARTITIONS, ROOF & FOUNDATION) ARE KEYED TO FLOOR PLANS, WALL SECTIONS, ROOF PLAN AND OTHER DETAILS AS APPROPRIATE.
- WORK FROM GIVEN DIMENSIONS. IN GENERAL, LARGE-SCALE DETAILS TAKE PRECEDENCE OVER SMALLER SCALE PLANS, ELEVATIONS AND BUILDING SECTIONS. NOTIFY THE ARCHITECT OF ANY DIMENSIONAL DISCREPANCIES PRIOR TO COMMENCING THE WORK, AND DO NOT BEGIN WORK UNTIL SUCH DISCREPANCIES ARE RESOLVED BY THE ARCHITECT. DO NOT SCALE DRAWINGS. DIMENSIONS INDICATED AS "CLEAR" SHALL BE MAINTAINED IN CASES OF DISCREPANCY.
- DIMENSIONAL CONTROL: EXTERIOR DIMENSIONS ARE FROM:
 - CENTERLINE OF COLUMN TO OUTSIDE FACE OF MASONRY
 - FACE OF MASONRY TO FACE OF MASONRY
 - FACE OF CONCRETE TO FACE OF CONCRETE
 - CENTERLINE OF COLUMN TO CENTERLINE OF WINDOW OPENING
 - MASONRY OPENING TO MASONRY OPENING
 - CENTER LINE OF COLUMN TO FACE OF MASONRY
- INTERIOR DIMENSIONS ARE FROM:
 - FACE OF STUD TO FACE OF STUD
 - FACE OF MASONRY TO FACE OF MASONRY
 - FACE OF STUD TO FACE OF MASONRY
 - CENTERLINE COLUMN TO FACE OF STUD OR MASONRY
 - EXISTING DIMENSIONS ARE SHOWN ENCLOSED IN SQUARE BRACKETS [] AND SHALL BE VERIFIED.
- VERIFY ALL EXISTING CONDITIONS AND DIMENSIONS AND REPORT ANY DISCREPANCIES TO THE ARCHITECT. PROCEED WITH THE WORK ONLY AFTER DISCREPANCY HAS BEEN RESOLVED WITH THE ARCHITECT.
- MASONRY OPENING OR ROUGH OPENING DIMENSIONS INDICATED ARE NOMINAL. DIMENSIONS ONLY. COORDINATE ALL MASONRY OPENINGS OR ROUGH OPENINGS WITH ACTUAL WINDOW UNIT, DOORFRAME, OR CURTAIN WALL/STOREFRONT SIZES AND REQUIREMENTS.
- ALL NEW OPENINGS INTO EXISTING MASONRY WALLS FOR MECHANICAL OR ELECTRICAL PENETRATIONS SHALL RECEIVE A LINTEL. REFER TO THE STRUCTURAL PLANS FOR LINTEL TYPE. REFER TO MECHANICAL PLANS FOR NUMBER, LOCATION, AND SIZE OF ALL PENETRATIONS.
- FLOORING AND FLOOR FINISHES SHALL BE INSTALLED TO A MAXIMUM DIFFERENTIAL OF 1/16" BETWEEN DISSIMILAR MATERIALS. PROVIDE TRANSITION STRIPS OR THRESHOLDS (1/2" MAXIMUM) OF SAME MATERIAL AS FLOORING AND/OR AS NOTED ON THE DRAWINGS.



ARCHITECTURE
INTERIOR DESIGN
PLANNING

P D T ARCHITECTS

49 DANFORTH STREET
PORTLAND, ME 04101
207.775.4000
207.775.5004 FAX

COPYRIGHT 2006
PDT Architects
Reuse or reproduction of the contents of this document is not permitted without written permission of PDT Architects.

Marine Hospital Renovation
MARTIN'S POINT - PORTLAND, MAINE

JOB NO.
05-108

DRWN. CHK
tak

SCALE:
1/8"=1'-0"

ISSUE
Bid Documents
24 April 2006

TITLE
Lower Level and
First Floor Plan

SHEET
A1.1