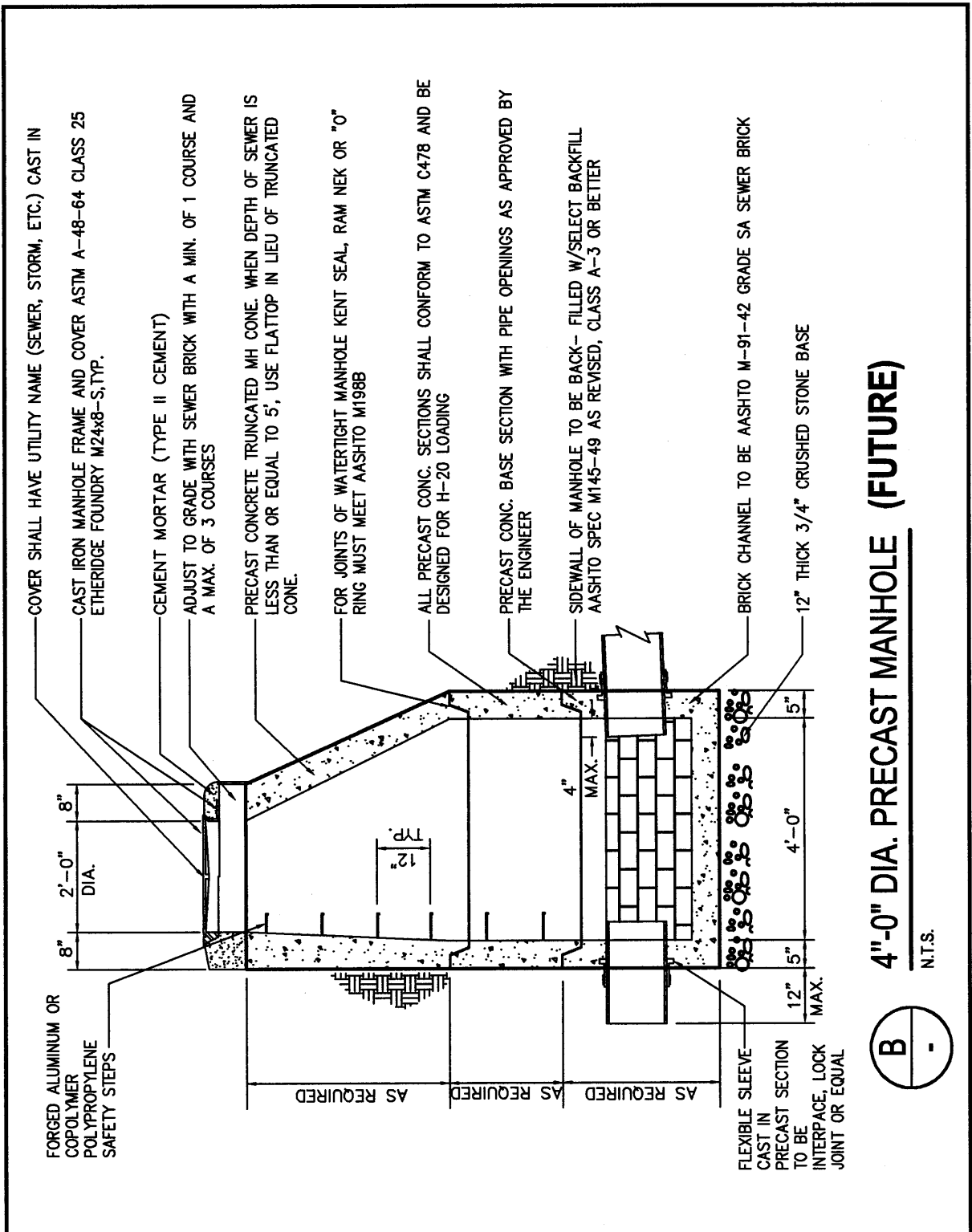
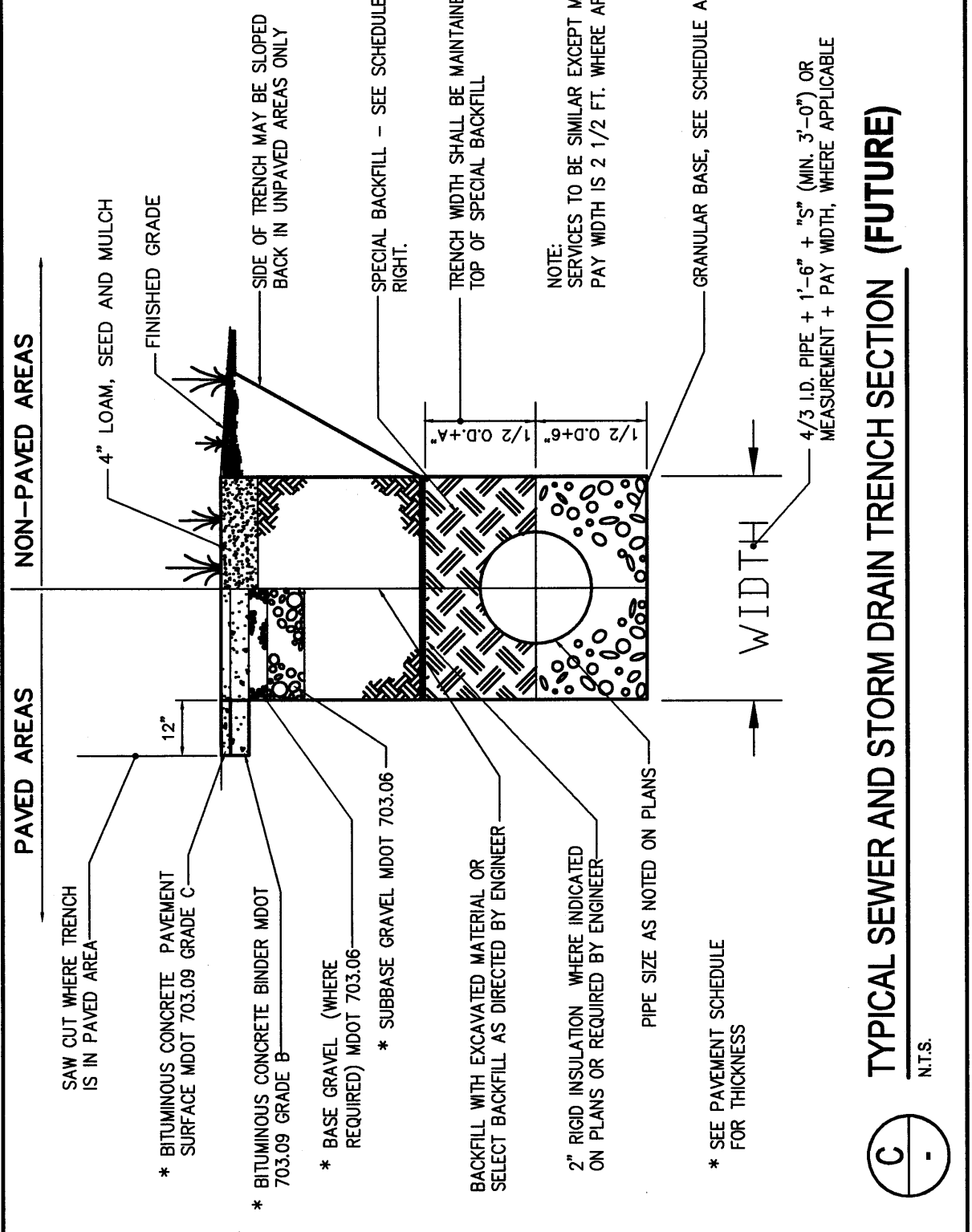


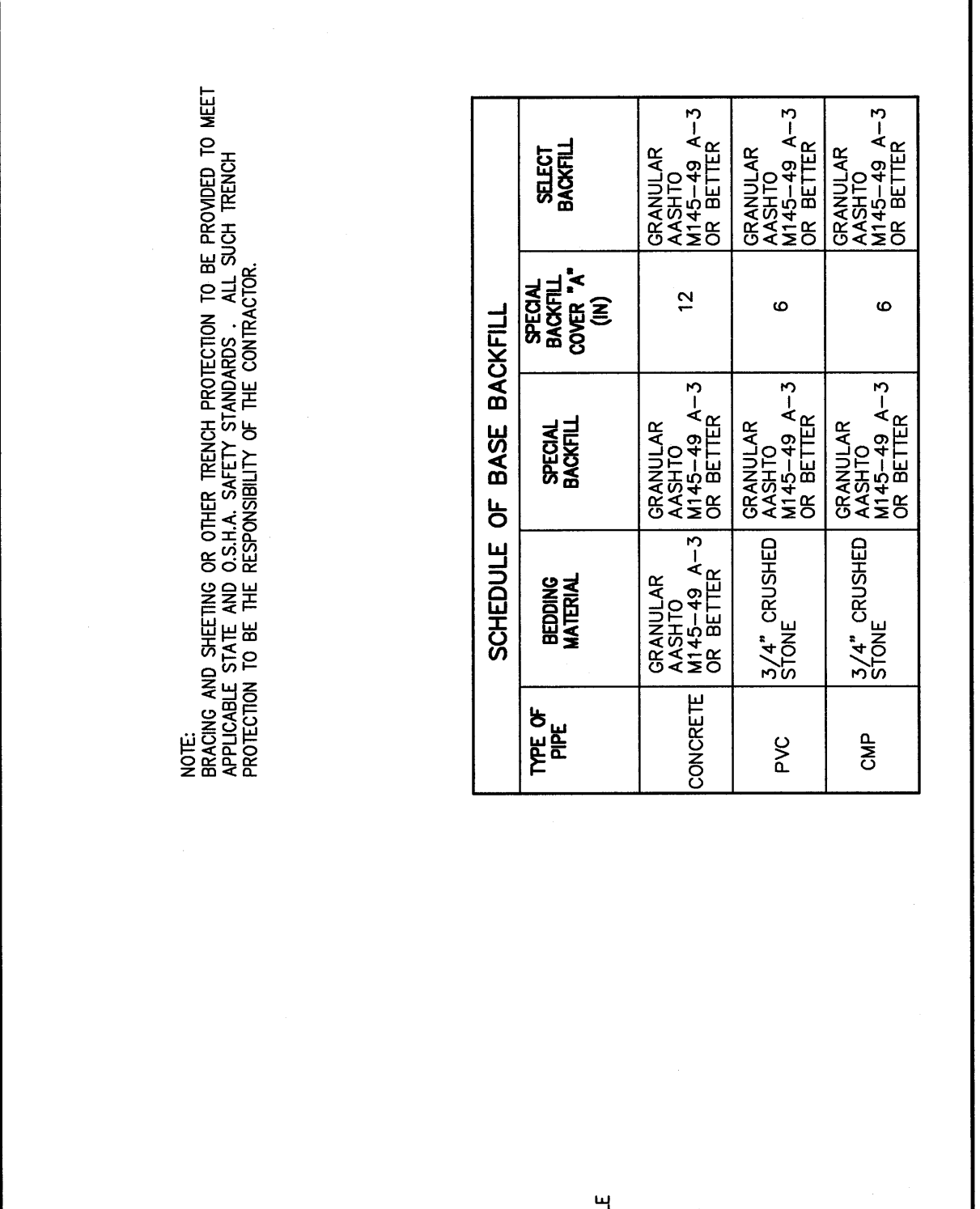
4"-Ø DIA. PRECAST CATCH BASIN (FUTURE)
N.T.S.



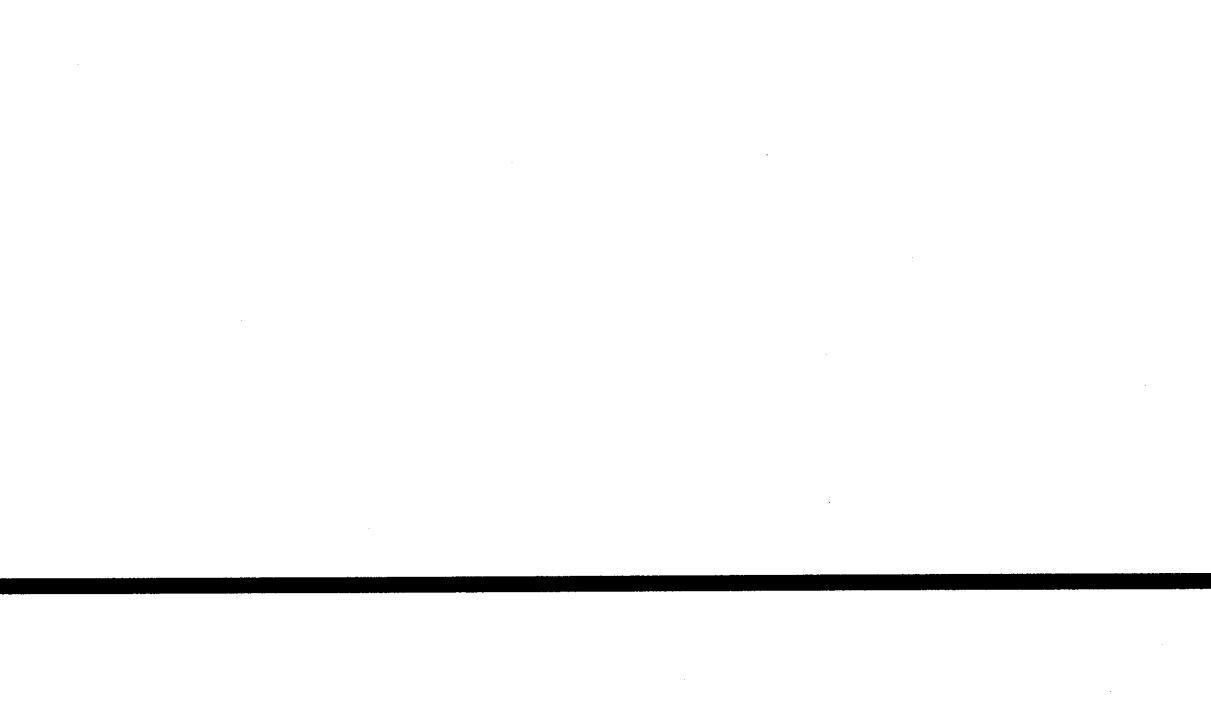
4"-Ø DIA. PRECAST MANHOLE (FUTURE)
N.T.S.



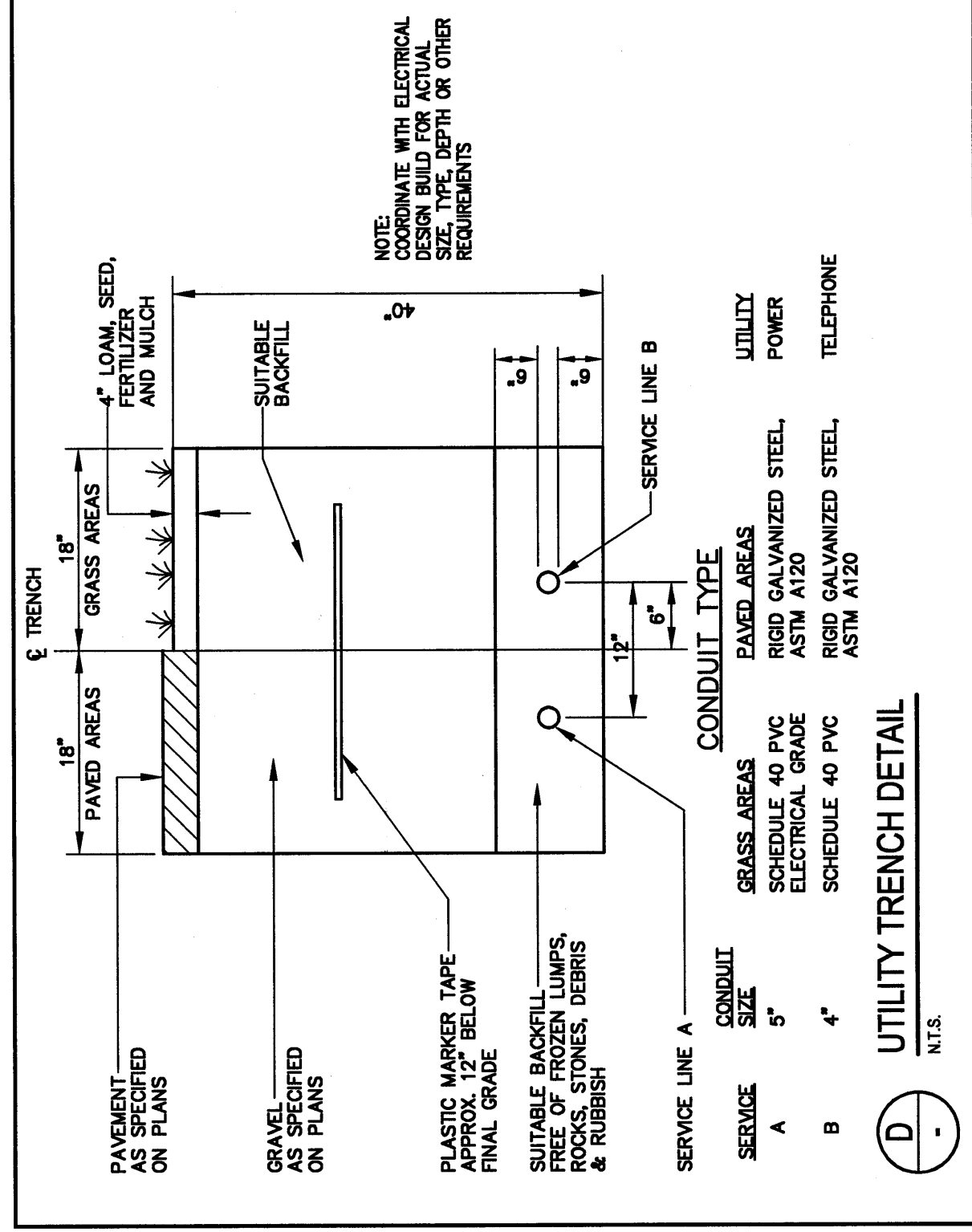
TYPICAL SEWER AND STORM DRAIN TRENCH SECTION (FUTURE)
N.T.S.



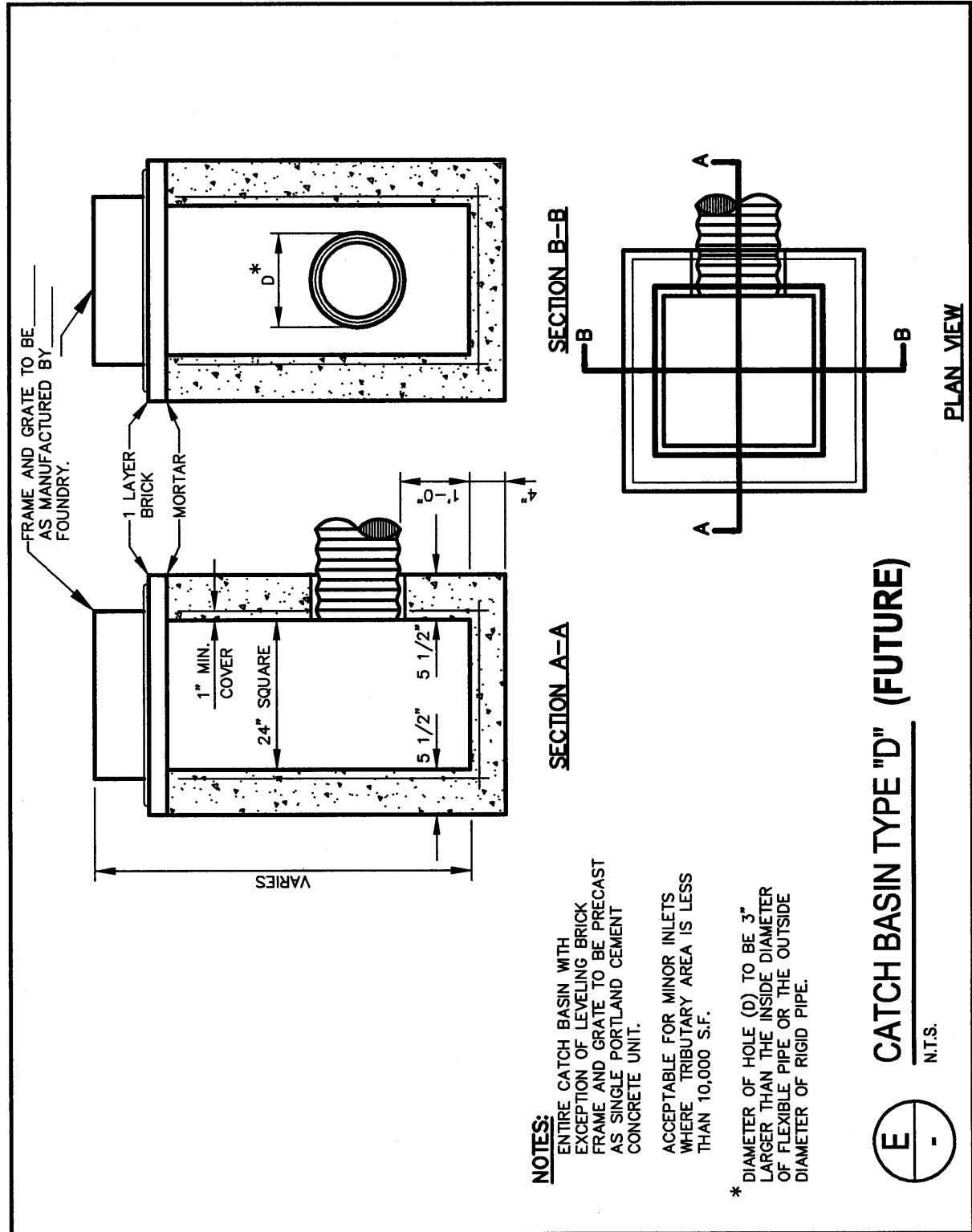
TYPE 3A-1 BITUMINOUS CURB DETAIL - MDOT MOLD 1 (FUTURE)
N.T.S.



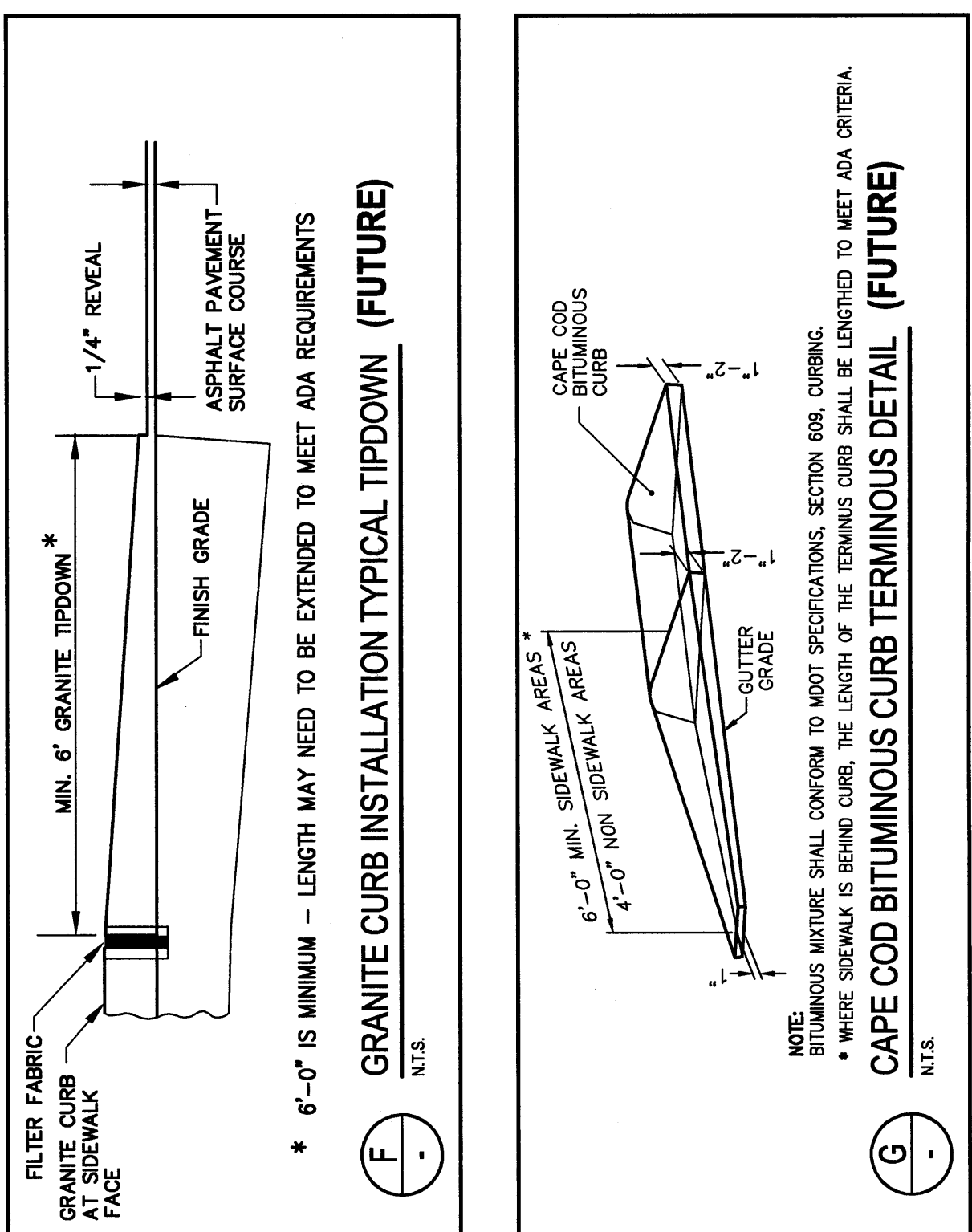
TYPE 3B CAPE COD BITUMINOUS CURB DETAIL (FUTURE)
N.T.S.



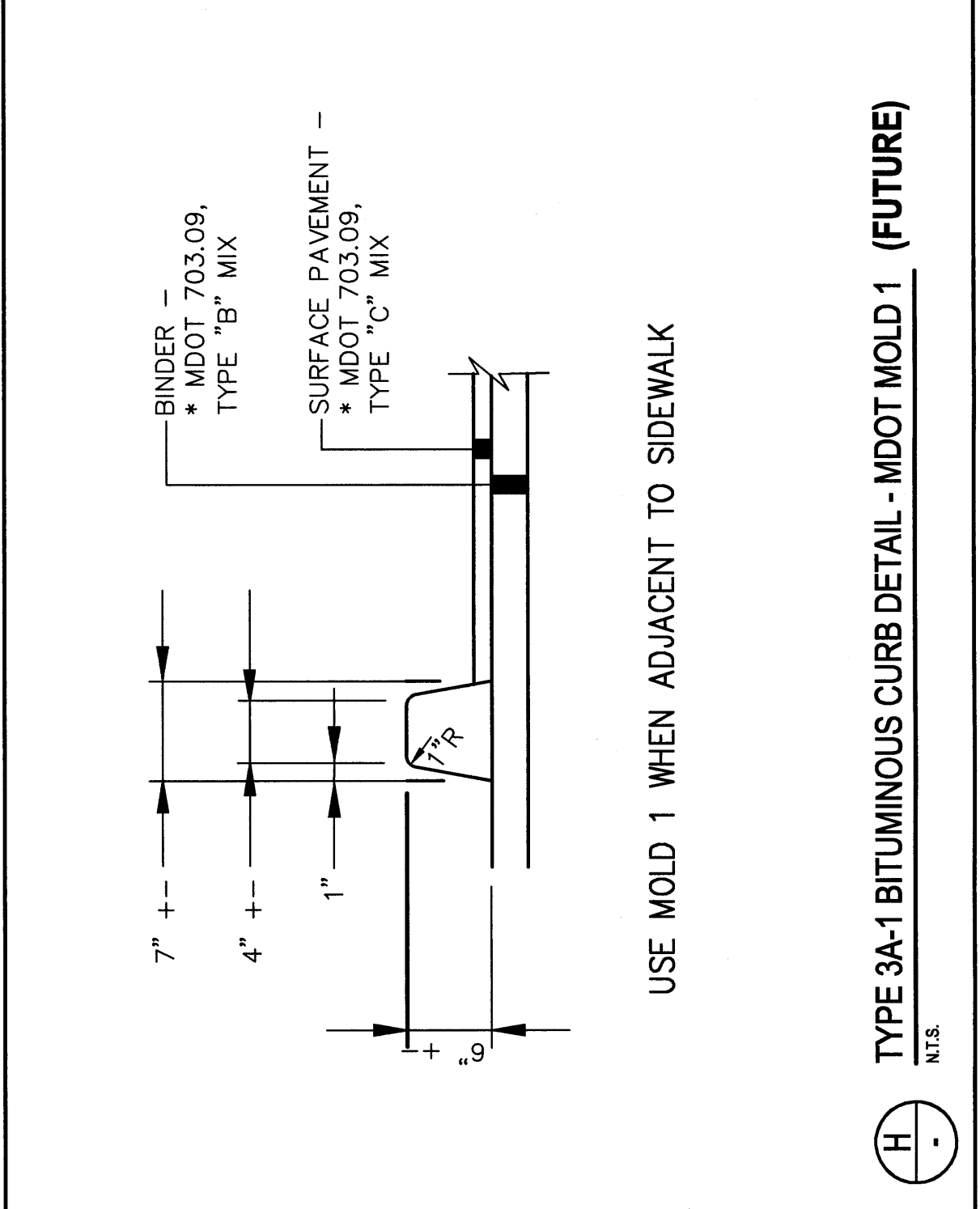
UTILITY TRENCH DETAIL
N.T.S.



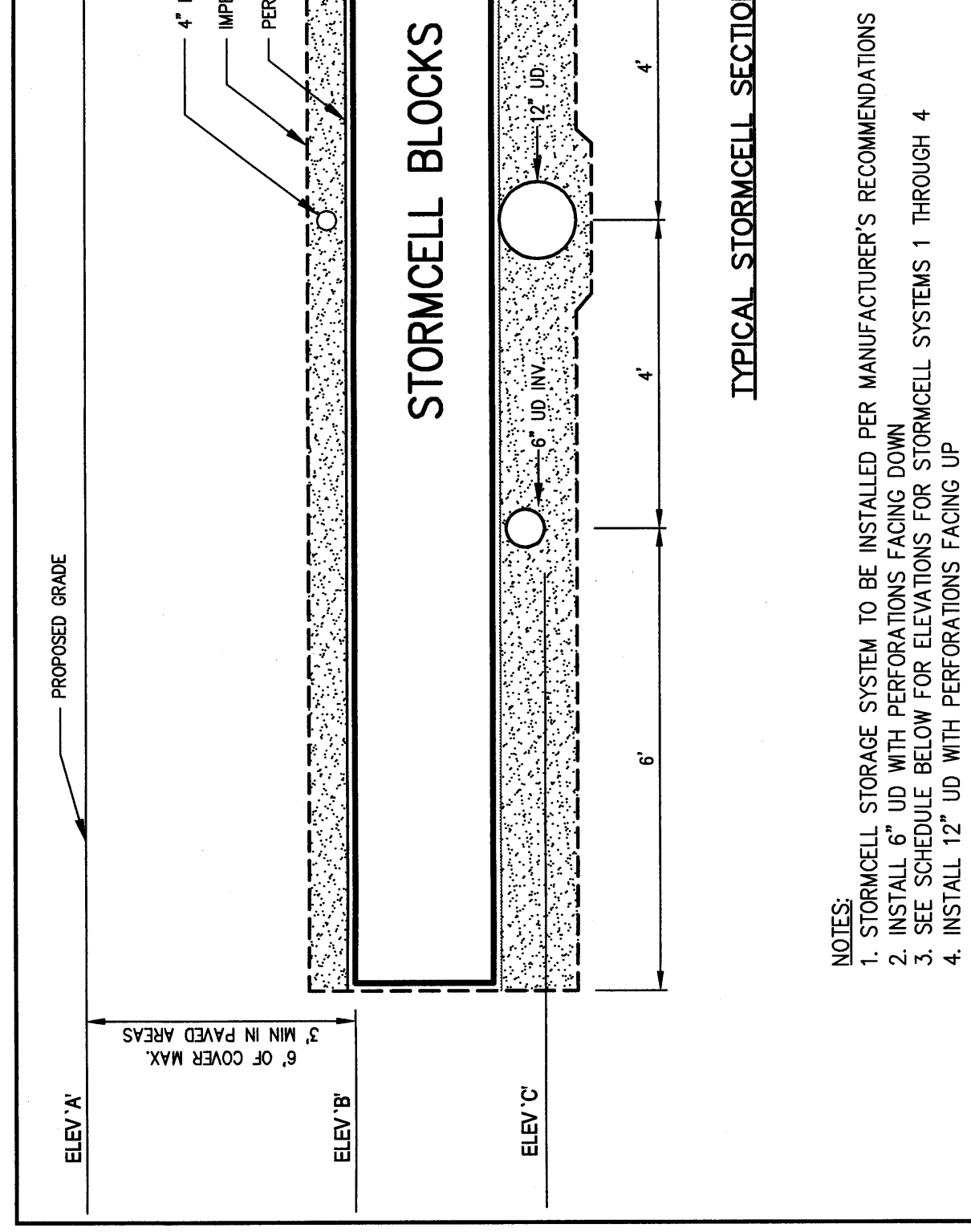
CATCH BASIN TYPE "D" (FUTURE)
N.T.S.



GRANITE CURB INSTALLATION TYPICAL TIPDOWN (FUTURE)
N.T.S.



USE MOLD 1 WHEN ADJACENT TO SIDEWALK



TYPICAL STORMCELL SECTION

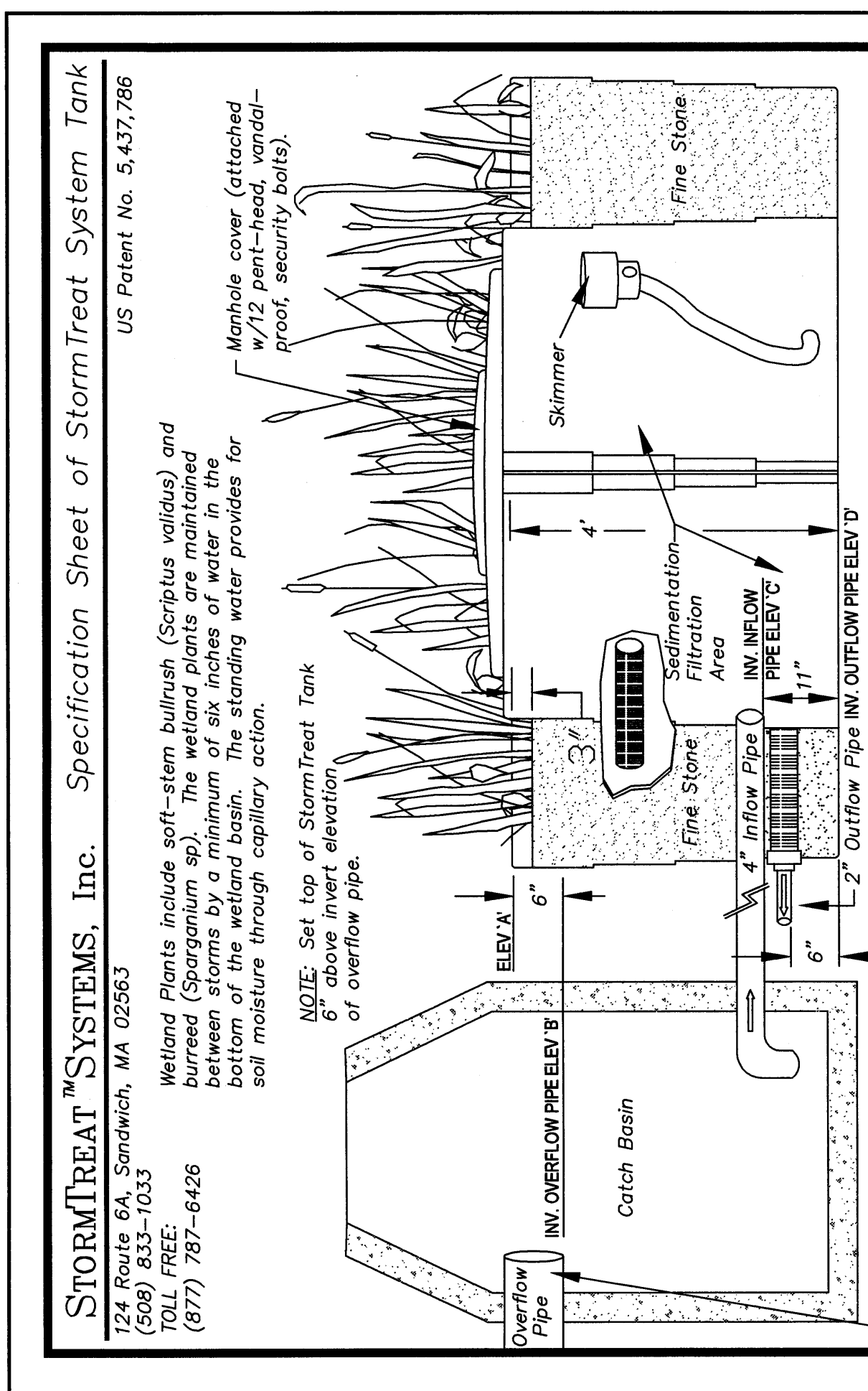
WATER QUALITY TREATMENT SYSTEM SCHEDULE

SYSTEM#	STORMCELL		STORMTREAT		QUANTITY
	ELEV 'A' (LOW)	ELEV 'B'	ELEV 'A'	ELEV 'D'	
SYSTEM#1	32.00	32.00	32.00	32.00	4
SYSTEM#2	32.00	32.00	32.00	32.00	3
SYSTEM#3	32.00	32.00	32.00	32.00	5
SYSTEM#4	32.00	32.00	32.00	32.00	6
					TOTAL 18

- NOTES:
1. STORMCELL STORAGE SYSTEM TO BE INSTALLED PER MANUFACTURER'S RECOMMENDATIONS AND TO MEET H-20 LOADING IN PAVED AREAS
 2. STORMCELL STORAGE SYSTEM TO BE INSTALLED PER MANUFACTURER'S RECOMMENDATIONS AND TO MEET H-20 LOADING IN PAVED AREAS
 3. SEE SCHEDULE BELOW FOR ELEVATIONS FOR STORMCELL SYSTEMS 1 THROUGH 4
 4. INSTALL 12" I/D WITH PERFORATIONS FACING UP

- NOTES:
1. 4" MANHOLE HEADERS ARE TO BE INSTALLED TO CONNECT 4" INFLOW PIPES TO STORMTREATS FROM STORM CELLS.
 2. A 4" MANHOLE HEADERS ARE TO BE INSTALLED TO CONNECT 2" OUTFLOW PIPES FROM STORMTREATS.

WATER QUALITY SYSTEMS DETAIL (FUTURE)
N.T.S.



STORMTREAT SYSTEMS, Inc. Specification Sheet of StormTreat System Tank
US Patent No. 5,437,786

126 Route 6A, Sandwich, MA 02563
Tel: 508-548-1005
TOLL FREE: (877) 787-6426

Wetland Plants include soft-stem bulrush (*Scirpus validus*) and burreed (*Sparganium sp.*). The wetland plants are maintained between the 1/4" and 3/4" depth of water. The wetland plants are maintained between the 1/4" and 3/4" depth of water. The wetland plants are maintained between the 1/4" and 3/4" depth of water.

NOTE: Set top of StormTreat Tank elevation to match elevation of overflow pipe.

NOTE: Oil & grease trap traps floatable hydrocarbons in sedimentation chamber. Holding volume = 1,300 gallons. Holding time = variable.

OTHER SPECIFICATIONS:
Oil & grease trap traps floatable hydrocarbons in sedimentation chamber. Holding volume = 1,300 gallons. Holding time = variable.

Outlet control valve used to set discharge rate. Discharge can occur subsurface by infiltrating into wetland system by establishing a no-flow boundary and hydraulic gradient. The outlet control valve can be followed by a check valve where the discharge pipe may be inundated in the event of a hazardous waste spill for containment purposes.

NOTE: Tank walls constructed of 1/4"-3/8" polyethylene

NOTE: 4" Slotted (0.01) well screen pipes

NOTE: Wetland substrate: 24" in length (3mm-5mm)

NOTE: Solid bulkhead directs water through the wetland system by establishing a no-flow boundary and hydraulic gradient.

NOTE: Inflow & outflow pipes (on center)

NOTE: Oil & grease trap traps floatable hydrocarbons in sedimentation chamber. Holding volume = 1,300 gallons. Holding time = variable.

NOTE: Outlet control valve used to set discharge rate. Discharge can occur subsurface by infiltrating into wetland system by establishing a no-flow boundary and hydraulic gradient. The outlet control valve can be followed by a check valve where the discharge pipe may be inundated in the event of a hazardous waste spill for containment purposes.

DELUCA-HOFFMAN ASSOCIATES, INC.
270 WASHINGTON STREET
BOSTON, MA 02108
TEL: 617-552-1100
FAX: 617-552-1101
WWW.DHASSOCIATES.COM

PROJECT: MARTIN'S POINT REDEVELOPMENT PROJECT
SHEET TITLE: UTILITY DETAILS

CLIENT: MARTIN'S POINT HEALTH CARE
FILE NAME: 234410SET
DATE: NOV. 2005
LEG: DD
CHECKED: DD
DATE: NOV. 2005
FILE NO.: 234410

REVISIONS

REV	DATE	DESCRIPTION
1	02.05.05	ISSUED TO CLIENT FOR REVIEW
2	02.05.05	ISSUED TO CLIENT FOR REVIEW
3	02.28.05	SECOND SKETCH PLAN SUBMISSION TO CITY
4	03.11.05	FINAL SITE PLAN SUBMISSION TO CITY
5	03.15.05	PERMITS FOR STORMCELLS

SEALING & PROTECTIVE COATINGS
FOR ALL EXPOSED SURFACES
AND JOINTS TO BE PRECAST
CONCRETE UNIT.

ACCEPTABLE FOR MINOR ALTEERS
TO BE MADE TO THIS DRAWING
IF THE TOTAL AREA OF ALTERATIONS
DOES NOT EXCEED 10% OF THE
TOTAL AREA OF THE DRAWING.

*** DIAMETER OF HOLE (Ø) TO BE 3"**
FOR ALL 4" DIA. PIPES AND 4"
FOR ALL 6" DIA. PIPES. HOLE TO BE
DIA. OF PIPE.

PLAN VIEW

SECTION A-A

SECTION B-B

PLAN VIEW