



Permitting and Inspections Department
Approved with Conditions

05/31/2018



MARTIN'S POINT™
HEALTHCARE

City of Portland's Planning, Permitting and Public Works' offices
Explanation of Permit Request
May 15, 2018

Dear City of Portland,

Martin's Point Health Care, located at 331 Veranda Street, Portland, ME is looking to replace our main/prominent exterior monument sign at the corner of 331 Veranda Street. Our current sign has faded in color, the vinyl is peeling, and the current sign does not allow us to promote current community events (American Heart Walk, Community Walking trail, etc.) or health services we provide (Flu Shots, Physical Therapy, Radiology, Accepting New Patients, etc.). We have worked with our local sign vendor to design a sign that will provide some longevity (especially the harsh weather we get on the water with the wind and salt air), marketing opportunities, while still maintaining a sophisticated and conservative appearance for the City of Portland and our property.

The main monument sign is currently about 15 square/feet and we would propose a new sign that would take about 25 square/feet. We also have a few other monument signs on campus that would/could be removed, if requested, to keep us within our allowed signage square feet. Each of those signs is approximately 15 square/feet also. We want to remove one sign anyway (shown by Building 3 on the map) and could discuss removing our secondary (and least desirable) entrance monument. We don't encourage our patient, visitors or employees to use the secondary entrance, hence the removal of the sign might be in our best interest.

Since we live in Maine and the warmer weather is ideal for this outdoor work, we hope to this signage work during the 2018 summer months.




We are willing to work with the City of Portland to stay within your regulations and hopefully meet our needs well.

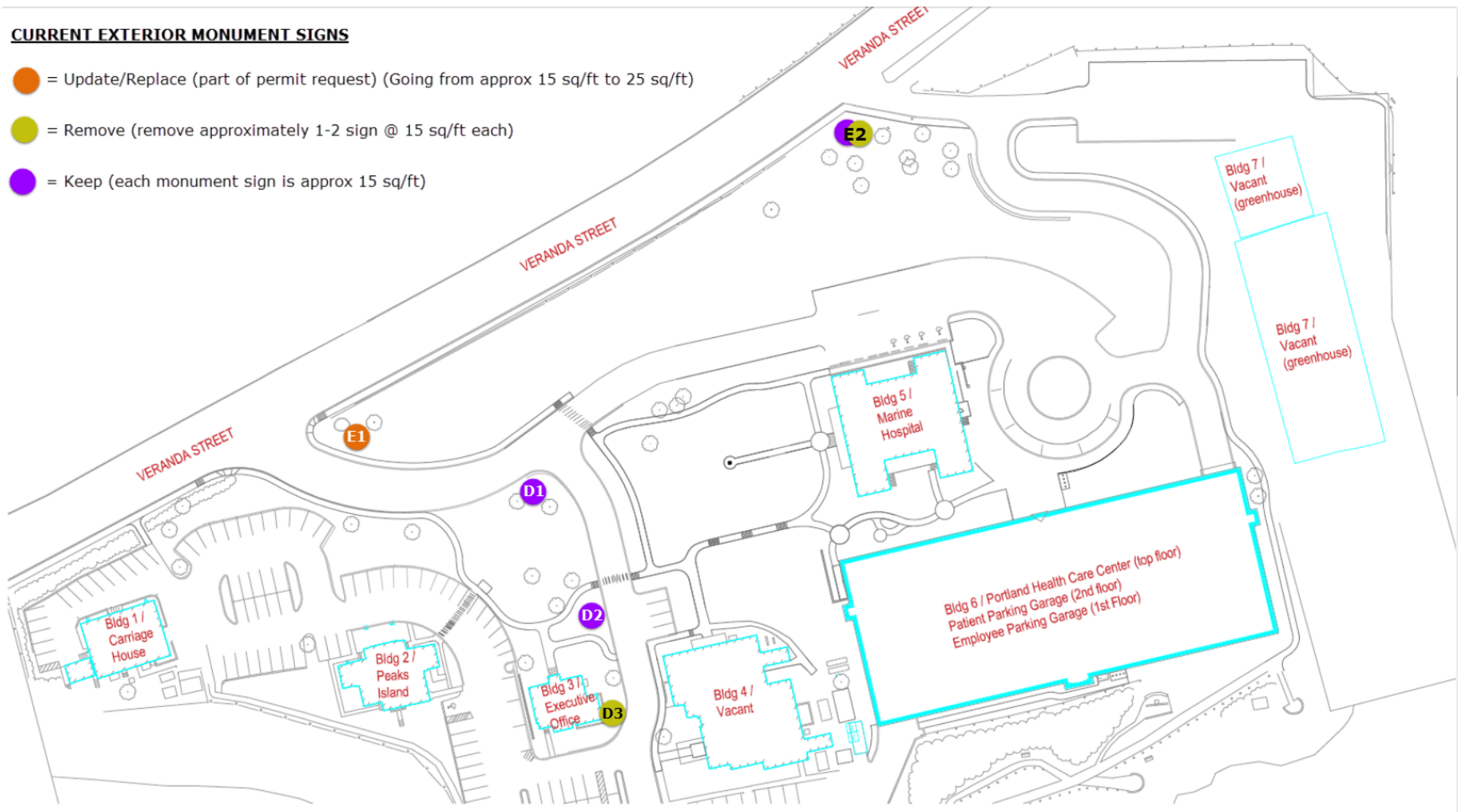
If you need additional information, please contact me directly, as I am the contact for this project.

Thanks,

Kacey Parquette
Martin's Point Health Care
Project Coordinator, Facilities Department
331 Veranda Street
Portland, ME 04103
207-253-6112 (work)
207-228-3839 (cell)
Kacey.parquette@martinspoint.org

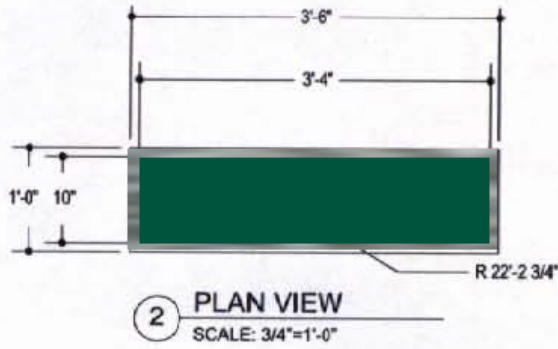
CURRENT EXTERIOR MONUMENT SIGNS

-  = Update/Replace (part of permit request) (Going from approx 15 sq/ft to 25 sq/ft)
-  = Remove (remove approximately 1-2 sign @ 15 sq/ft each)
-  = Keep (each monument sign is approx 15 sq/ft)





Permitting and Inspections Department
 Approved with Conditions
 05/31/2018

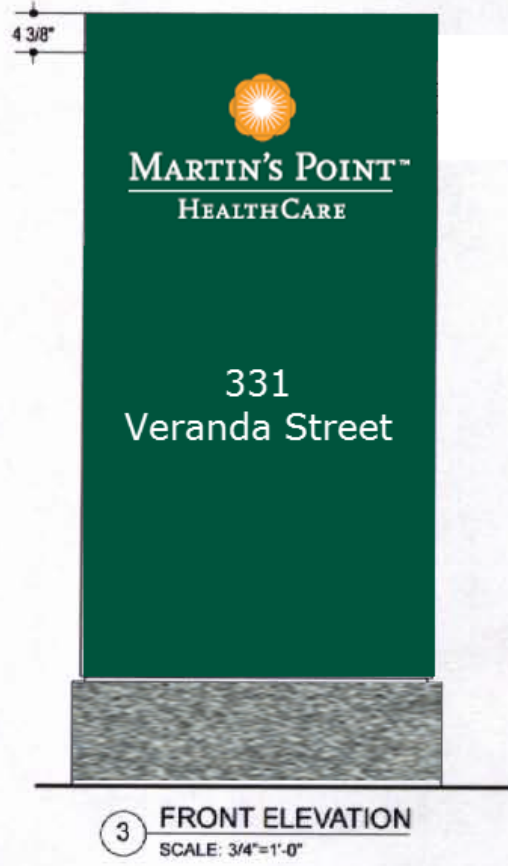
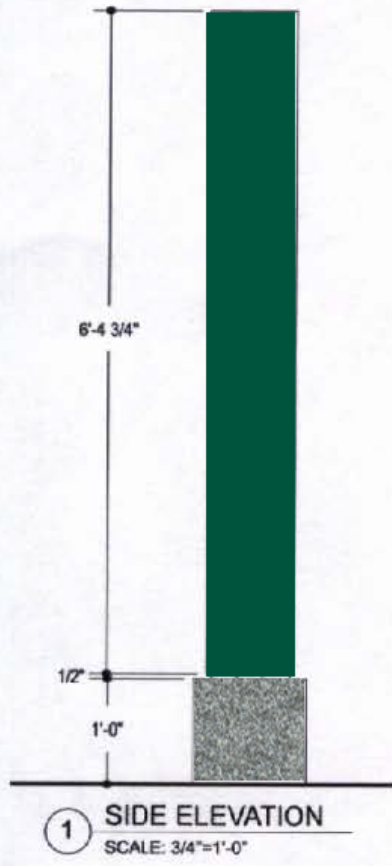


1 Specs to Come...



Double-sided 1/8" aluminum sign can, painted to match PMS Semi-Gloss black. Powder-coat all exposed surfaces. Return color on all sides to match black. All major building text shall be white frosted acrylic letters, internally illuminated with soft halo and light diffuser. All secondary text shall be silk-screen PMS 124-C to match Martin's Point Health Care logo/wordmark standards.

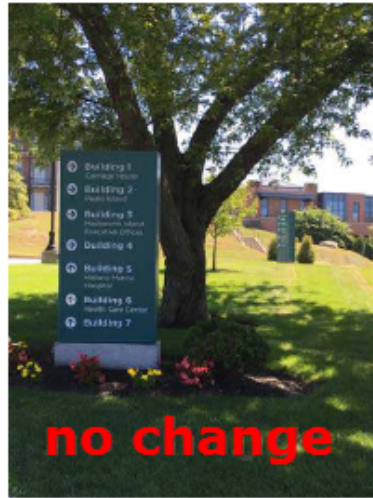
Breakaway connection devise at surface of granite base. Drilled or spread footing foundation required. Provide appropriate design based for underground utilities by client. Typical for all exterior signs.



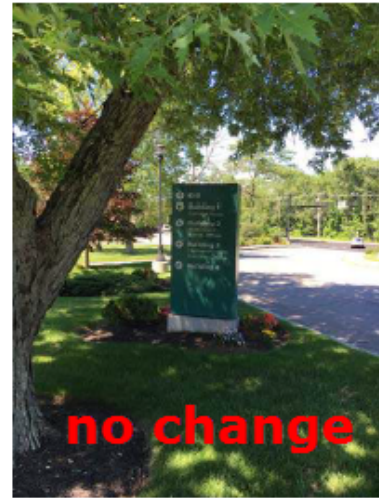
E1 Primary/Main Entrance



D1: front directory sign



D1: back directory sign



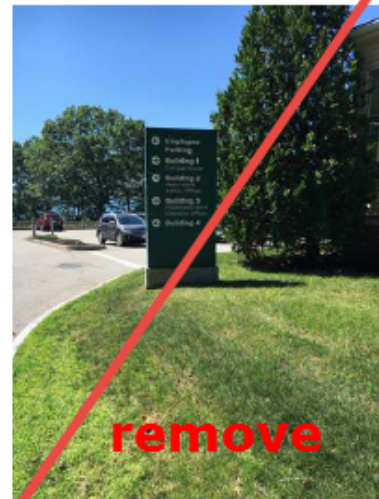
D2: front directory sign



D2: back directory sign



D3: front directory sign



E2 Secondary Entrance





Permitting and Inspections Department
 Approved with Conditions
 05/31/2018



Martin's Point Healthcare
 331 Veranda, Portland

Exterior Campus Identification
 Sign Concept G.a

Date:	Rev/Ver:	Drawn By:
7/07/17	V1.0	MLH
7/11/17	V1.1	MLH
2/02/18	V1.2a	MLH
5/10/18	V1.3a	MLH

©2017 WelchSign, All Rights Reserved. The designs & information contained in this drawing are confidential, do not distribute or reproduce without written permission from a WelchSign representative.
 7 Lincoln Avenue • Scarborough, Maine • 04074 • (800) 635-3506 • (207) 883-6200 • welchsign.com

26830
 DC_V2.1 06192017

