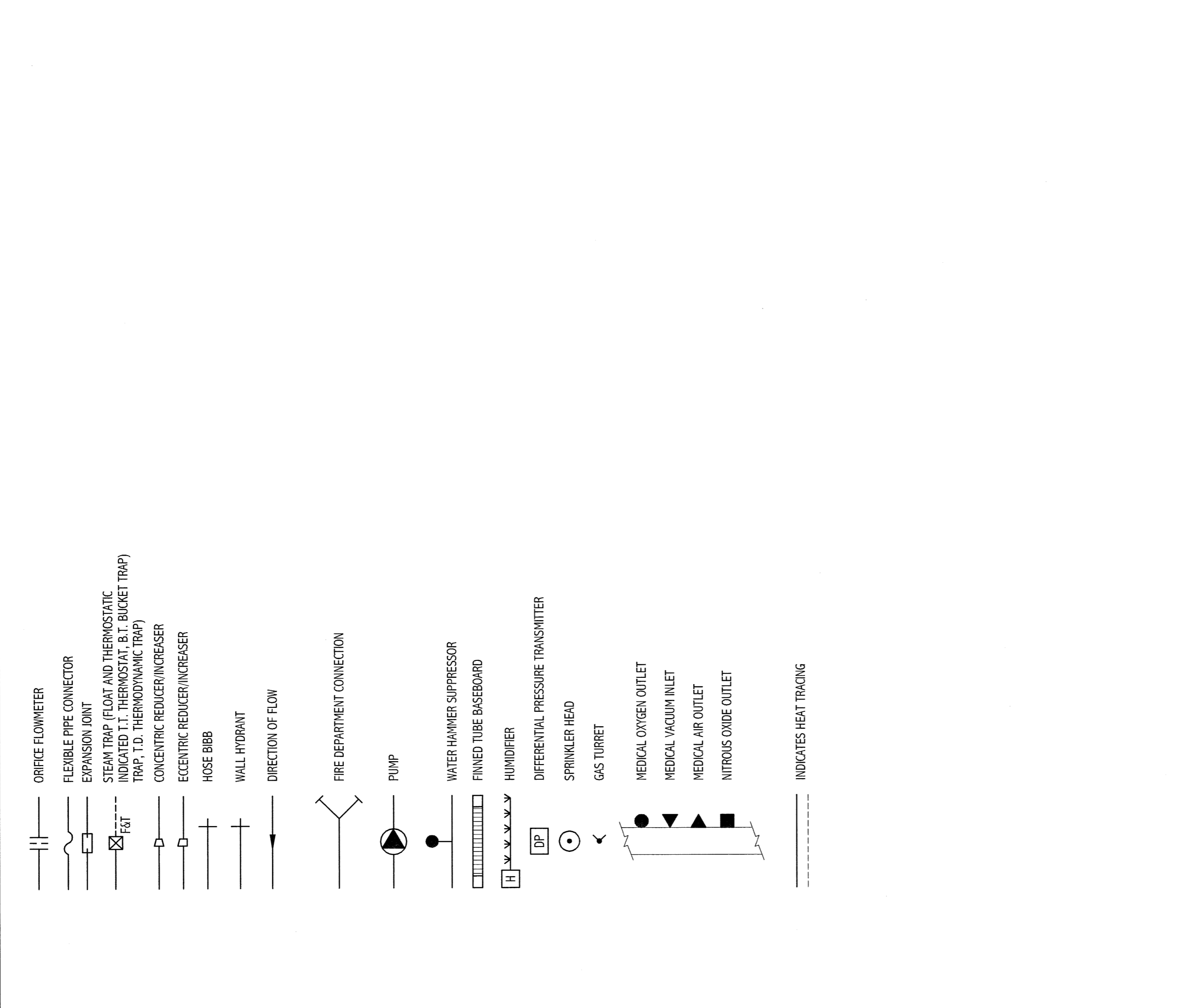
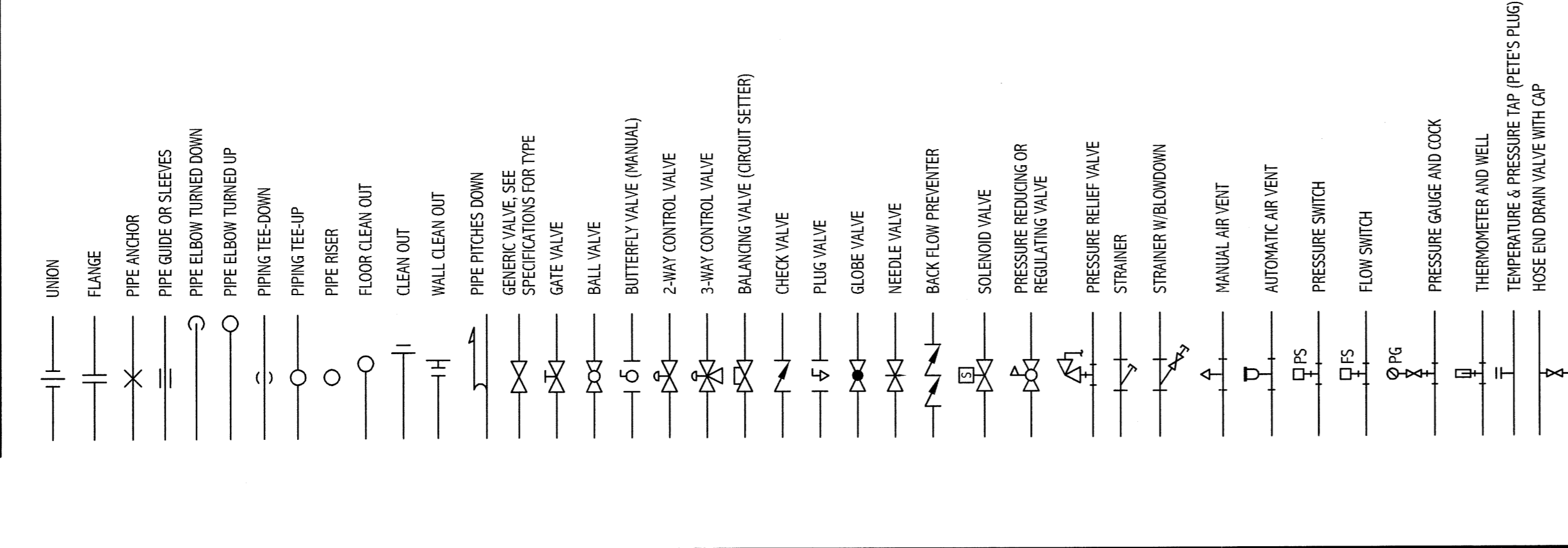


PIPING SYMBOLS



ABBREVIATIONS

AW	AUTOMATIC AIR VENT	EA	EXHAUST AIR
AC	AIR COOLED CONDENSER	EF	EXHAUST FAN
ADU	AIR CONDITIONING UNIT	EMK	EXHAUST MOTOR
AO	ACCESS DOOR	ER	EXHAUST REGISTER
AE	AIR EXHAUST	(E)	EXISTING
AF	AIR FLOW MEASURING STATION	ESD	EXISTING
AFMS	AIR FLOW MEASURING STATION	FB	FURNISHED BY OWNER
AH	AIR HANDLING UNIT	FDP	FACE AND BYPASS
AP	ACCESS PANEL	FC	FLEXIBLE CONNECTION
ATC	AUTOMATIC TEMPERATURE CONTROL	FD	FLOOR FINISH
AV	AIR VENT	FD-H	FLOOR FINISH 1/2"
BA	BREATHING COMPRESSED AIR	FD	FLOOR FINISH
BB	BASEBOARD	FEE	FINISHED FLOOR ELEVATION
BD	BACKDRIFT DAMPER	FG	FIBERGLASS
BS	BUS GATE	F.S.T.	FLOOR AND THERMOSTATIC
BPP	BACKFLOW PREVENTER	FJ	FLOOR FINISH
BLK	BULLING	FPHB	FREZE RESISTANT HOSE BIB
BO	BOTTOM OF DUCT	FR	FINISHED TUBE RADIATION
BP	BOTTOM OF PIPE	FS	FLOOR SWITCH
BTU	BRITISH THERMAL UNIT	GC	GENERAL CONTRACTOR
CB	CONVERTER TRANSFORMER	GPH	GALLONS PER MINUTE
CD	CEILING DUCT	H	HUMIDIFIER
CF	CAPPED FOR FUTURE	HSB	HOT WATER
CFM	CUBIC FEET PER MINUTE	HPCO	HEAVY-DUTY FLOOR CLEANOUT
CG	CEILING	HRI	HEAT RESISTENT UNIT
CH	CEILING	HTR	HEATER
CM	COLD WATER	H.V.	HEATING AND VENTILATION
CMF	CITY WATER PROCESS	HVAC	HEATING, VENTILATING AND AIR CONDITIONING
CO	COORDINATE	HW	HOT WATER
COOP	CONDENSATE PUMP & RECEIVER	IK	ICE DAMPENER
CTE	CONNECT TO EXISTING	IN WG	INCHES WATER GAGE
CU	CUPPER	LD	LEAD DUCT
CUH	CUPPER UNIT HEATER	MAU	MAKE UP AIR UNIT
CV	CONTROL VALVE	MAX	MAXIMUM
CU	COLD WATER	MBA	MECHANICAL ENGINEER
CUF	CITY WATER PROCESS	MFR	MANUFACTURER
DC	DOUBLE CONTAINED	MN	MINIMUM
DD	DIRECT DIGITAL CONTROL	NO	NOT OR OPERATED DAMPER
DA	DAUNTER	NPY	NON-POTABLE WATER
DC	DOWN IN CHASE	IND	INDICATED
DM	DOWN IN WALL	MA	MAKE UP AIR
DN	DOWN	NPW	NON-POTABLE WATER
DS	DOWNSPOUT	N/S	NOT TO SCALE
DT	DROP AND TRANSITION	GA	GROSS AREA
DWG	DRAINAGE	OBD	OPPOSED BLADE DAMPER
DWH	DOMESTIC WATER HEATER	ODD	ODD NUMBERED DUCT

PIPING SYSTEMS

10-1 HF	POTABLE WATER	PW	POTABLE WATER
10-1 RE	RELIEF GAS	R	RELIEF GAS
10-1 S	REFRIGERANT LIQUID	RL	REFRIGERANT LIQUID
10-1 S-R	REFRIGERANT SUCION	RS	REFRIGERANT SUCION
10-1 S-R	RECYCLED SOLVENT DRAIN	RSD	RECYCLED SOLVENT DRAIN
10-1 S-R	SOLENT	SV	SOLENT
10-1 S-R	SPRINKLER	SP	SPRINKLER
10-1 S-R	TEMPERED WATER	TW	TEMPERED WATER
10-1 S-R	TEMPERED CHILLED WATER SUPPLY	TMS	TEMPERED CHILLED WATER SUPPLY
10-1 S-R	TEMPERED CHILLED WATER RETURN	TMR	TEMPERED CHILLED WATER RETURN
10-1 S-R	PLANT VACUUM	VAC	PLANT VACUUM
10-1 S-R	ZONE VALVE BOX	ZB	ZONE VALVE BOX
10-1 S-R	TEMP	TEMP	TEMPERATURE
10-1 S-R	TEMP	TEMP	TEMPERATURE
10-1 S-R	DOMESTIC HOT WATER (TEMP. °F)	DHW	DOMESTIC HOT WATER (TEMP. °F)
10-1 S-R	RECIP. DOMESTIC HOT WATER (TEMP. °F)	RDHW	RECIPROCATING DOMESTIC HOT WATER (TEMP. °F)
10-1 S-R	DOMESTIC COLD WATER	DCW	DOMESTIC COLD WATER
10-1 S-R	DOMESTIC HOT WATER (110°F)	DHW-110	DOMESTIC HOT WATER (110°F)
10-1 S-R	REGULATED DOMESTIC HOT WATER (120°F)	DHW-120	REGULATED DOMESTIC HOT WATER (120°F)
10-1 S-R	S. SANITARY, W. WASTE & AIR W/DRIVER WASTE	S-SW-AW	SANITARY WASTE & AIR WITH DRIVER WASTE
10-1 S-R	S. SANITARY, W. WASTE & AIR W/DRIVER WASTE (EXIST.)	S-SW-AW-EX	SANITARY WASTE & AIR WITH DRIVER WASTE (EXISTING)
10-1 S-R	S. SANITARY, W. WASTE & AIR W/DRIVER WASTE (BELOW LAB)	S-SW-AW-BL	SANITARY WASTE & AIR WITH DRIVER WASTE (BELOW LAB)
10-1 S-R	S. SANITARY, W. WASTE & AIR W/DRIVER WASTE (BELOW LAB-EXIST.)	S-SW-AW-BL-EX	SANITARY WASTE & AIR WITH DRIVER WASTE (BELOW LAB-EXISTING)
10-1 S-R	S. SANITARY, W. WASTE & AIR W/DRIVER WASTE (BELOW LAB-EXIST.)	S-SW-AW-BL-EX	SANITARY WASTE & AIR WITH DRIVER WASTE (BELOW LAB-EXISTING)
10-1 S-R	S. SANITARY, W. WASTE & AIR W/DRIVER WASTE (BELOW LAB-EXIST.)	S-SW-AW-BL-EX	SANITARY WASTE & AIR WITH DRIVER WASTE (BELOW LAB-EXISTING)
10-1 S-R	S. SANITARY, W. WASTE & AIR W/DRIVER WASTE (BELOW LAB-EXIST.)	S-SW-AW-BL-EX	SANITARY WASTE & AIR WITH DRIVER WASTE (BELOW LAB-EXISTING)
10-1 S-R	S. SANITARY, W. WASTE & AIR W/DRIVER WASTE (BELOW LAB-EXIST.)	S-SW-AW-BL-EX	SANITARY WASTE & AIR WITH DRIVER WASTE (BELOW LAB-EXISTING)
10-1 S-R	S. SANITARY, W. WASTE & AIR W/DRIVER WASTE (BELOW LAB-EXIST.)	S-SW-AW-BL-EX	SANITARY WASTE & AIR WITH DRIVER WASTE (BELOW LAB-EXISTING)
10-1 S-R	S. SANITARY, W. WASTE & AIR W/DRIVER WASTE (BELOW LAB-EXIST.)	S-SW-AW-BL-EX	SANITARY WASTE & AIR WITH DRIVER WASTE (BELOW LAB-EXISTING)
10-1 S-R	S. SANITARY, W. WASTE & AIR W/DRIVER WASTE (BELOW LAB-EXIST.)	S-SW-AW-BL-EX	SANITARY WASTE & AIR WITH DRIVER WASTE (BELOW LAB-EXISTING)
10-1 S-R	S. SANITARY, W. WASTE & AIR W/DRIVER WASTE (BELOW LAB-EXIST.)	S-SW-AW-BL-EX	SANITARY WASTE & AIR WITH DRIVER WASTE (BELOW LAB-EXISTING)
10-1 S-R	S. SANITARY, W. WASTE & AIR W/DRIVER WASTE (BELOW LAB-EXIST.)	S-SW-AW-BL-EX	SANITARY WASTE & AIR WITH DRIVER WASTE (BELOW LAB-EXISTING)
10-1 S-R	S. SANITARY, W. WASTE & AIR W/DRIVER WASTE (BELOW LAB-EXIST.)	S-SW-AW-BL-EX	SANITARY WASTE & AIR WITH DRIVER WASTE (BELOW LAB-EXISTING)
10-1 S-R	S. SANITARY, W. WASTE & AIR W/DRIVER WASTE (BELOW LAB-EXIST.)	S-SW-AW-BL-EX	SANITARY WASTE & AIR WITH DRIVER WASTE (BELOW LAB-EXISTING)
10-1 S-R	S. SANITARY, W. WASTE & AIR W/DRIVER WASTE (BELOW LAB-EXIST.)	S-SW-AW-BL-EX	SANITARY WASTE & AIR WITH DRIVER WASTE (BELOW LAB-EXISTING)

SMRTI

MARTIN'S POINT HEALTH CARE
MEDICAL OFFICE BUILDING
PORTLAND, OREGON

LEGENDS AND ABBREVIATIONS

REV.	DESCRIPTION	DATE

ISSUED FOR G.M.P. & PERMITTING
4-3-09

CURRENT ISSUE STATUS

GENERAL NOTE
1. ALL GENERAL NOTES, SYMBOLS, AND DETAILS ARE TO BE CONSIDERED AS APPLICABLE TO ALL HVAC AND PLUMBING SYSTEMS UNLESS OTHERWISE SPECIFIED. CHANGES SHOWN ON THIS SHEET ARE FOR REFERENCE ONLY AND DO NOT INDICATE THEIR INCORPORATION INTO THE DESIGN.

AS NOTED	DATE
SUB	GRAPHIC SCALE
TITLE	
PROJECT MANAGER	
DESIGN MANAGER	
SCALE	
PROJECT NO.	
SHEET NO.	
SHEET TOTAL	