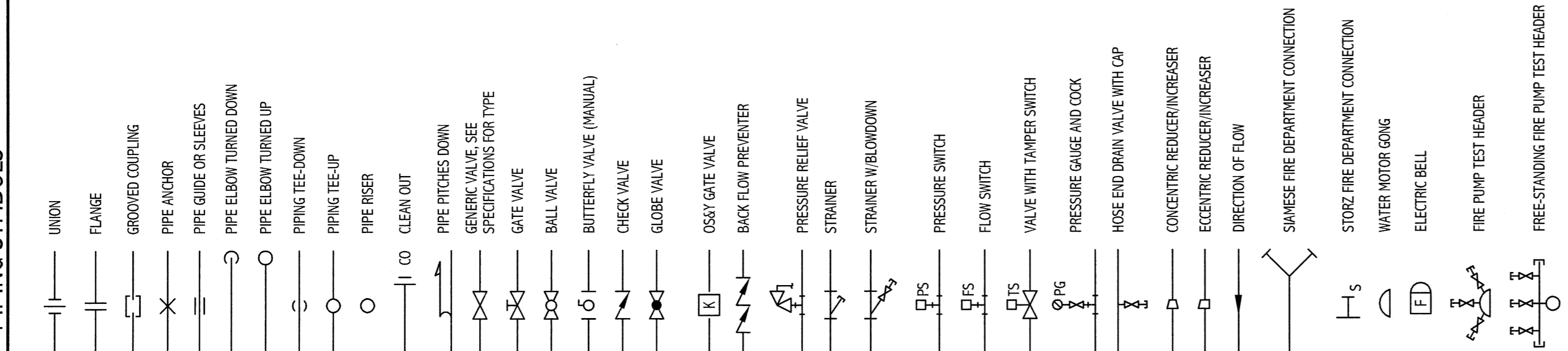
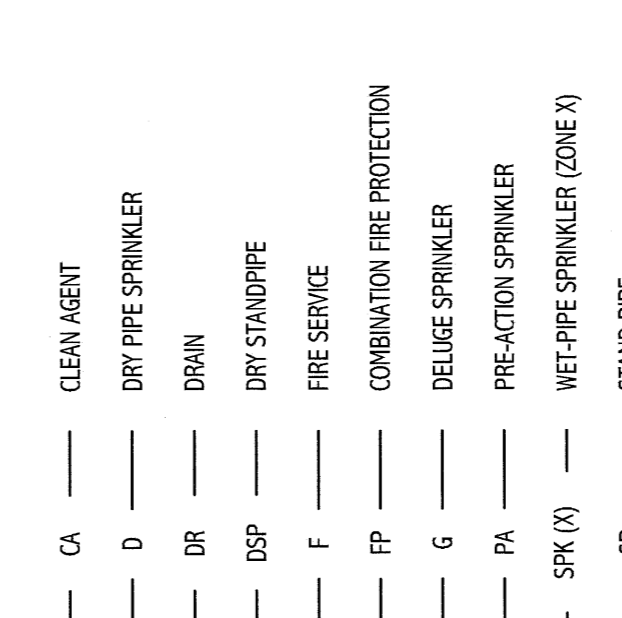


PIPING SYMBOLS



PIPING SYSTEMS



ABBREVIATIONS

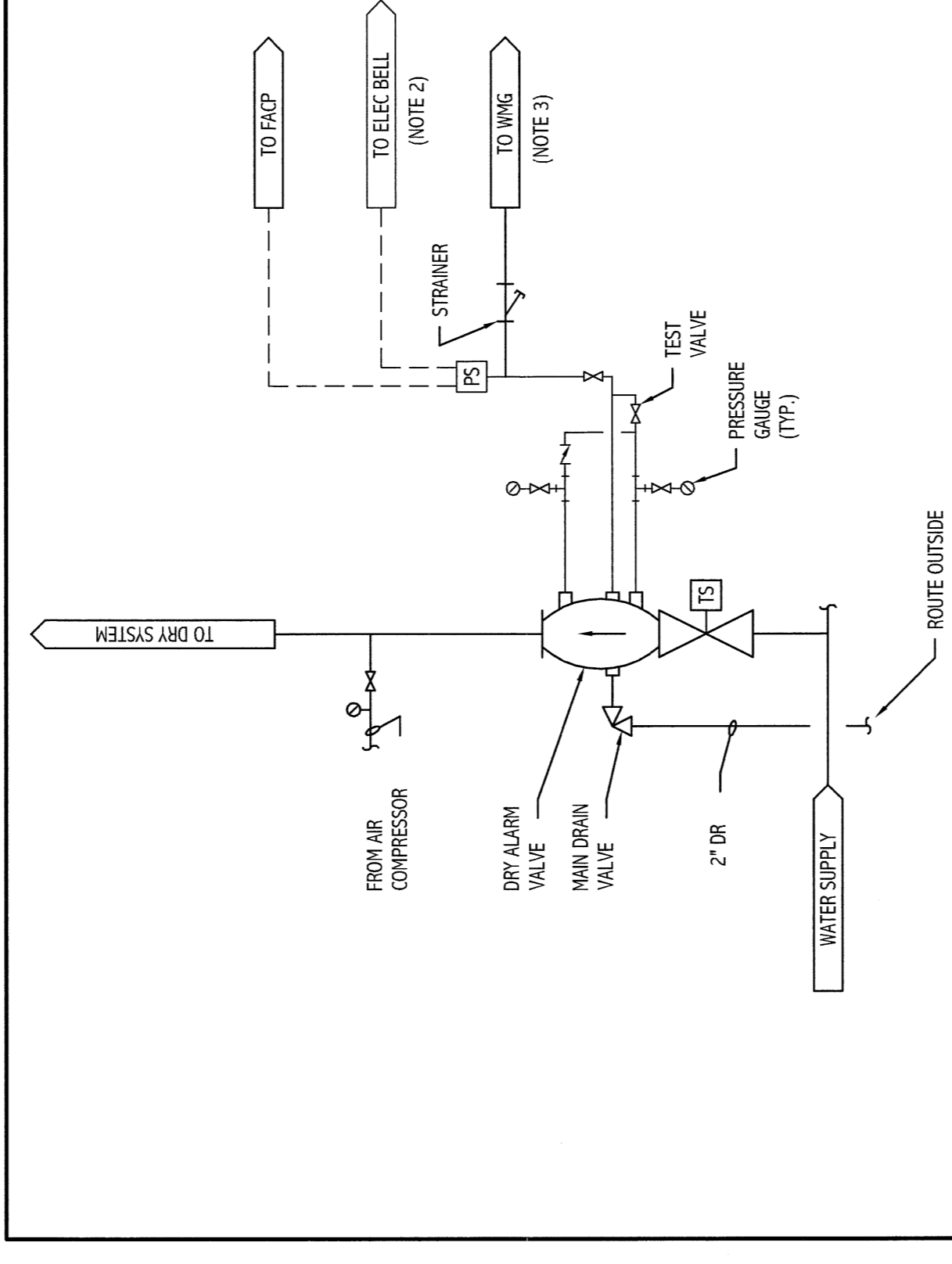
AD	ACCESS DOOR	MIN	MINIMUM
AH	AUTHORITY HAVING JURISDICTION	MTD	MONITORED
AP	ACCESS PANEL	NTS	NOT TO SCALE
BFP	BACKFLOW PREVENTER	PA/CV	PRE-ACTION ALARM CHECK VALVE
BLDG	BUILDING	PK	(FIRE DEPARTMENT) PUMPER CONNECTION
BOP	BOTTOM OF PIPE	PI	POST INDICATING VALVE
CA	CLEAN AGENT	PLBG	PLUMBING
CAF	CAPPED FOR FUTURE	PRV	PRESSURE REDUCING VALVE
CLG	CeILING	PS	PRESSURE SWITCH
COAT	COATING	(R)	REMOVE
COORD	COORDINATE	(REL)	RELOCATED
CTE	CONNECT TO EXISTING	RM	ROOM
CU	COPPER	RFP	REDUCED PRESSURE ZONE RFP
CU	COLD WATER	RV	RELIEF VALVE
DACV	DRY PIPE ALARM CHECK VALVE	SACV	(WET PIPE) SPRINKLER ALARM CHECK VALVE
DA	DAMETER	SD	SMOKE DETECTOR
DC	DOWN IN CHASE	SP	STAND PIPE
DM	DOWN IN WALL	SPK	SPRINKLER
DVA	DOUBLE CHECK VALVE ASSEMBLY	TH	(FIRE DEPARTMENT) TEST HEADER
DN	DOWN	TOP	TOP OF PIPE
DR	DOWN	TS	TAMPER SWITCH
DS	DOWNPOUT	TTS	TIGHT TO STEEL
DSP	DRY STANDPIPE	TK	TYPICAL
DT	DROP AND TRANSITION	UC	UP IN CHASE
DWG	DRAWING	UM	UP IN WALL
ENC	ENCLOSURE	UL	UNDERWRITERS LABORATORY
ENST	EXISTING	VALV	VALVE AND CAPPED FOR FUTURE
ENST	EXISTING	W/	WITH
FDO	FURNISHED BY OWNER	WV	WALL INDICATING VALVE
FC	FLEXIBLE CONNECTION	WNG	WATER MOTOR GONG
FCA	FLOOR CONTROL VALVE ASSEMBLY		
FDC	FIRE DEPARTMENT CONNECTION		
FV	FIRE DEPARTMENT VALVE		
FDC	FIRE DEPARTMENT VALVE CABINET		
FEX	FIRE EXTINGUISHER		
FI	FIRE RISE		
FIK	FIRE HOSE CABINET		
FN	FACTORY METAL		
FS	FLOOR SWITCH		
GC	GENERAL CONTRACTOR		
GPM	GALLONS PER MINUTE		
HVC	HEATING, VENTILATING AND AIR CONDITIONING		
ITS	INSPECTOR'S TEST STATION		
UPK	LIMIT OF FIRE PROTECTION CONTRACT		
MAN	MANUFACTURER		

GENERAL NOTE

1. ALL WORK SHALL BE IN ACCORDANCE WITH THE LATEST EDITIONS OF THE NFPA 96, 13, 2001, 25, 30, 35, 40, 70, 72, 75, 80, 85, 92, 96, 101, 102, 103, 104, 105, 106, 107, 108, 109, 110, 112, 113, 114, 115, 116, 117, 118, 119, 120, 121, 122, 123, 124, 125, 126, 127, 128, 129, 130, 131, 132, 133, 134, 135, 136, 137, 138, 139, 140, 141, 142, 143, 144, 145, 146, 147, 148, 149, 150, 151, 152, 153, 154, 155, 156, 157, 158, 159, 160, 161, 162, 163, 164, 165, 166, 167, 168, 169, 170, 171, 172, 173, 174, 175, 176, 177, 178, 179, 180, 181, 182, 183, 184, 185, 186, 187, 188, 189, 190, 191, 192, 193, 194, 195, 196, 197, 198, 199, 200, 201, 202, 203, 204, 205, 206, 207, 208, 209, 210, 211, 212, 213, 214, 215, 216, 217, 218, 219, 220, 221, 222, 223, 224, 225, 226, 227, 228, 229, 230, 231, 232, 233, 234, 235, 236, 237, 238, 239, 240, 241, 242, 243, 244, 245, 246, 247, 248, 249, 250, 251, 252, 253, 254, 255, 256, 257, 258, 259, 260, 261, 262, 263, 264, 265, 266, 267, 268, 269, 270, 271, 272, 273, 274, 275, 276, 277, 278, 279, 280, 281, 282, 283, 284, 285, 286, 287, 288, 289, 290, 291, 292, 293, 294, 295, 296, 297, 298, 299, 300, 301, 302, 303, 304, 305, 306, 307, 308, 309, 310, 311, 312, 313, 314, 315, 316, 317, 318, 319, 320, 321, 322, 323, 324, 325, 326, 327, 328, 329, 330, 331, 332, 333, 334, 335, 336, 337, 338, 339, 340, 341, 342, 343, 344, 345, 346, 347, 348, 349, 350, 351, 352, 353, 354, 355, 356, 357, 358, 359, 360, 361, 362, 363, 364, 365, 366, 367, 368, 369, 370, 371, 372, 373, 374, 375, 376, 377, 378, 379, 380, 381, 382, 383, 384, 385, 386, 387, 388, 389, 390, 391, 392, 393, 394, 395, 396, 397, 398, 399, 400, 401, 402, 403, 404, 405, 406, 407, 408, 409, 410, 411, 412, 413, 414, 415, 416, 417, 418, 419, 420, 421, 422, 423, 424, 425, 426, 427, 428, 429, 430, 431, 432, 433, 434, 435, 436, 437, 438, 439, 440, 441, 442, 443, 444, 445, 446, 447, 448, 449, 450, 451, 452, 453, 454, 455, 456, 457, 458, 459, 460, 461, 462, 463, 464, 465, 466, 467, 468, 469, 470, 471, 472, 473, 474, 475, 476, 477, 478, 479, 480, 481, 482, 483, 484, 485, 486, 487, 488, 489, 490, 491, 492, 493, 494, 495, 496, 497, 498, 499, 500, 501, 502, 503, 504, 505, 506, 507, 508, 509, 510, 511, 512, 513, 514, 515, 516, 517, 518, 519, 520, 521, 522, 523, 524, 525, 526, 527, 528, 529, 530, 531, 532, 533, 534, 535, 536, 537, 538, 539, 540, 541, 542, 543, 544, 545, 546, 547, 548, 549, 550, 551, 552, 553, 554, 555, 556, 557, 558, 559, 560, 561, 562, 563, 564, 565, 566, 567, 568, 569, 570, 571, 572, 573, 574, 575, 576, 577, 578, 579, 580, 581, 582, 583, 584, 585, 586, 587, 588, 589, 590, 591, 592, 593, 594, 595, 596, 597, 598, 599, 600, 601, 602, 603, 604, 605, 606, 607, 608, 609, 610, 611, 612, 613, 614, 615, 616, 617, 618, 619, 620, 621, 622, 623, 624, 625, 626, 627, 628, 629, 630, 631, 632, 633, 634, 635, 636, 637, 638, 639, 640, 641, 642, 643, 644, 645, 646, 647, 648, 649, 650, 651, 652, 653, 654, 655, 656, 657, 658, 659, 660, 661, 662, 663, 664, 665, 666, 667, 668, 669, 670, 671, 672, 673, 674, 675, 676, 677, 678, 679, 680, 681, 682, 683, 684, 685, 686, 687, 688, 689, 690, 691, 692, 693, 694, 695, 696, 697, 698, 699, 700, 701, 702, 703, 704, 705, 706, 707, 708, 709, 710, 711, 712, 713, 714, 715, 716, 717, 718, 719, 720, 721, 722, 723, 724, 725, 726, 727, 728, 729, 730, 731, 732, 733, 734, 735, 736, 737, 738, 739, 740, 741, 742, 743, 744, 745, 746, 747, 748, 749, 750, 751, 752, 753, 754, 755, 756, 757, 758, 759, 760, 761, 762, 763, 764, 765, 766, 767, 768, 769, 770, 771, 772, 773, 774, 775, 776, 777, 778, 779, 780, 781, 782, 783, 784, 785, 786, 787, 788, 789, 790, 791, 792, 793, 794, 795, 796, 797, 798, 799, 800, 801, 802, 803, 804, 805, 806, 807, 808, 809, 810, 811, 812, 813, 814, 815, 816, 817, 818, 819, 820, 821, 822, 823, 824, 825, 826, 827, 828, 829, 830, 831, 832, 833, 834, 835, 836, 837, 838, 839, 840, 841, 842, 843, 844, 845, 846, 847, 848, 849, 850, 851, 852, 853, 854, 855, 856, 857, 858, 859, 860, 861, 862, 863, 864, 865, 866, 867, 868, 869, 870, 871, 872, 873, 874, 875, 876, 877, 878, 879, 880, 881, 882, 883, 884, 885, 886, 887, 888, 889, 890, 891, 892, 893, 894, 895, 896, 897, 898, 899, 900, 901, 902, 903, 904, 905, 906, 907, 908, 909, 910, 911, 912, 913, 914, 915, 916, 917, 918, 919, 920, 921, 922, 923, 924, 925, 926, 927, 928, 929, 930, 931, 932, 933, 934, 935, 936, 937, 938, 939, 940, 941, 942, 943, 944, 945, 946, 947, 948, 949, 950, 951, 952, 953, 954, 955, 956, 957, 958, 959, 960, 961, 962, 963, 964, 965, 966, 967, 968, 969, 970, 971, 972, 973, 974, 975, 976, 977, 978, 979, 980, 981, 982, 983, 984, 985, 986, 987, 988, 989, 990, 991, 992, 993, 994, 995, 996, 997, 998, 999, 1000.

NOTE:

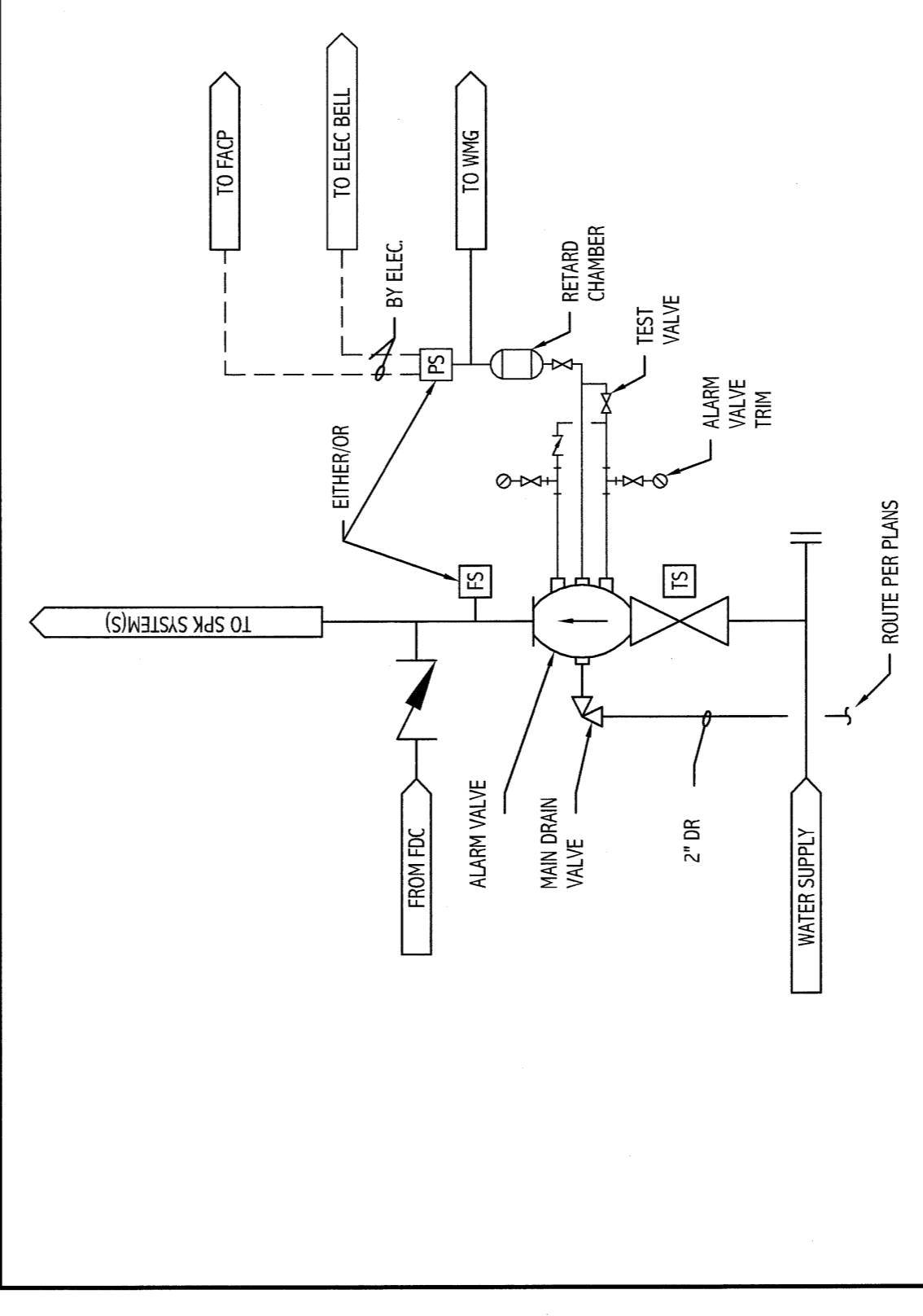
- SEE G001 FOR PROJECT GENERAL NOTES
- SEE SHEET E-001 FOR LEGEND AND GENERAL NOTES



- NOTES:
- ALL DEVICES, INCLUDING COMPONENTS AND FITTINGS ARE SHOWN HERE. THE INTENT OF THIS DETAIL IS TO SHOW THE HOIST PIPES AND THEIR INTERLOCKING.
 - FOR MULTIPLE ALARM VALVE APPLICATION, ONE BELL WILL SUFFICE, UNLESS OTHERWISE REQUIRED BY THE FIRE DEPARTMENT.
 - FOR MULTIPLE ALARM VALVE APPLICATION, ONE WATER MOTOR GONG WILL SUFFICE, UNLESS OTHERWISE REQUIRED BY THE FIRE DEPARTMENT.

H18 DRY PIPE SPRINKLER ALARM CHECK VALVE (DACV)

NOT TO SCALE



D18 WET PIPE SPRINKLER ALARM CHECK VALVE (SACV)

NOT TO SCALE

ARCHITECTURE
 ENGINEERING
 PLANNING
 INTERIOR DESIGN
 COMMISSIONING
SMART
 MARTIN'S POINT HEALTH CARE
 MEDICAL OFFICE BUILDING
 PORTLAND, MAINE

AS NOTED	DATE
PROJECT NUMBER	SUB
DATE CAPTIONED	TITLE
DATE OF RECORD	SCALE
DATE OF REVISION	PROJECT NO.
DATE OF ISSUE	PROJECT NO.

SHEET TITLE
 FIRE PROTECTION
 LEGENDS AND ABBREVIATIONS

PROJECT NO.	08132
SHEET NO.	FP001