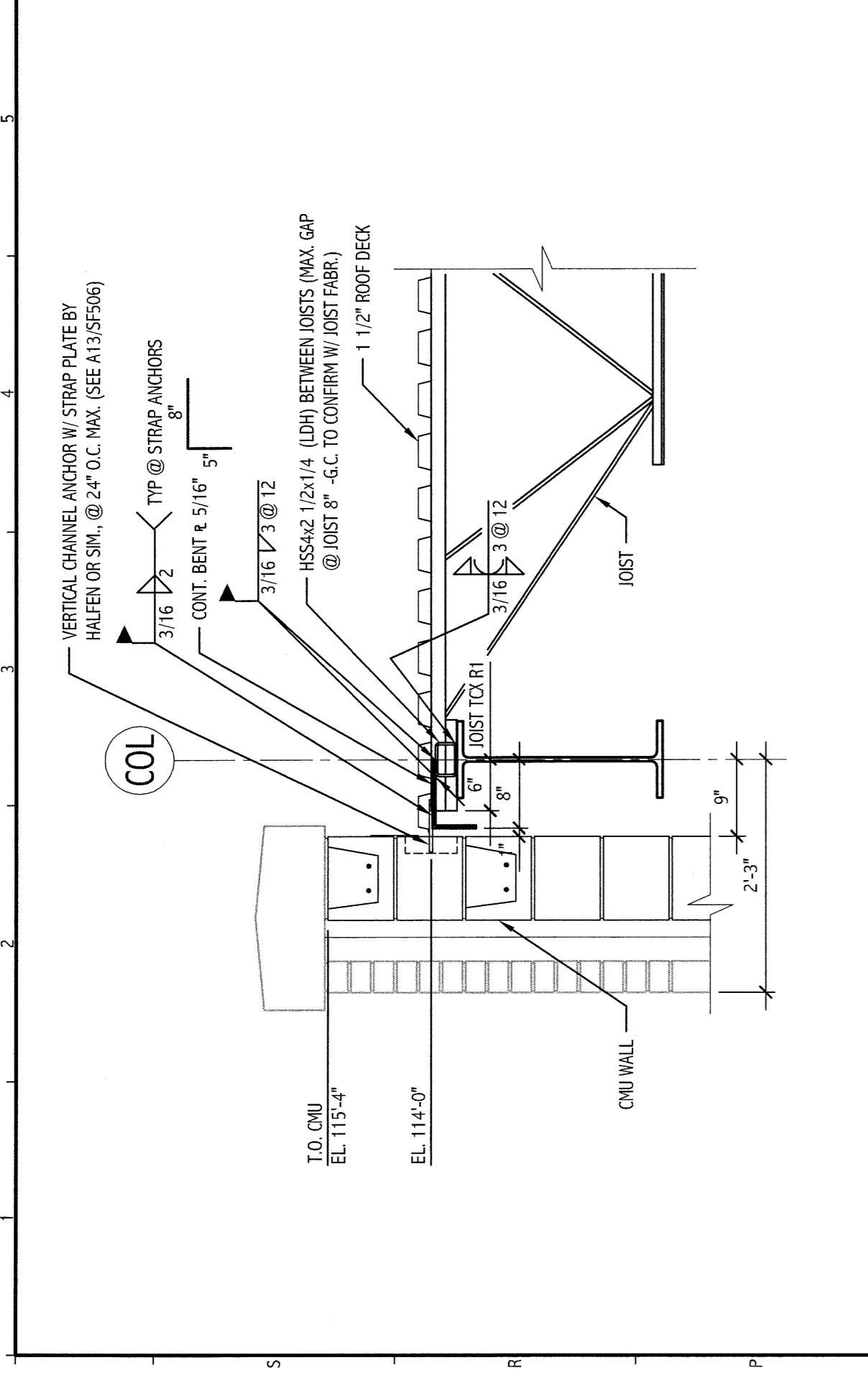
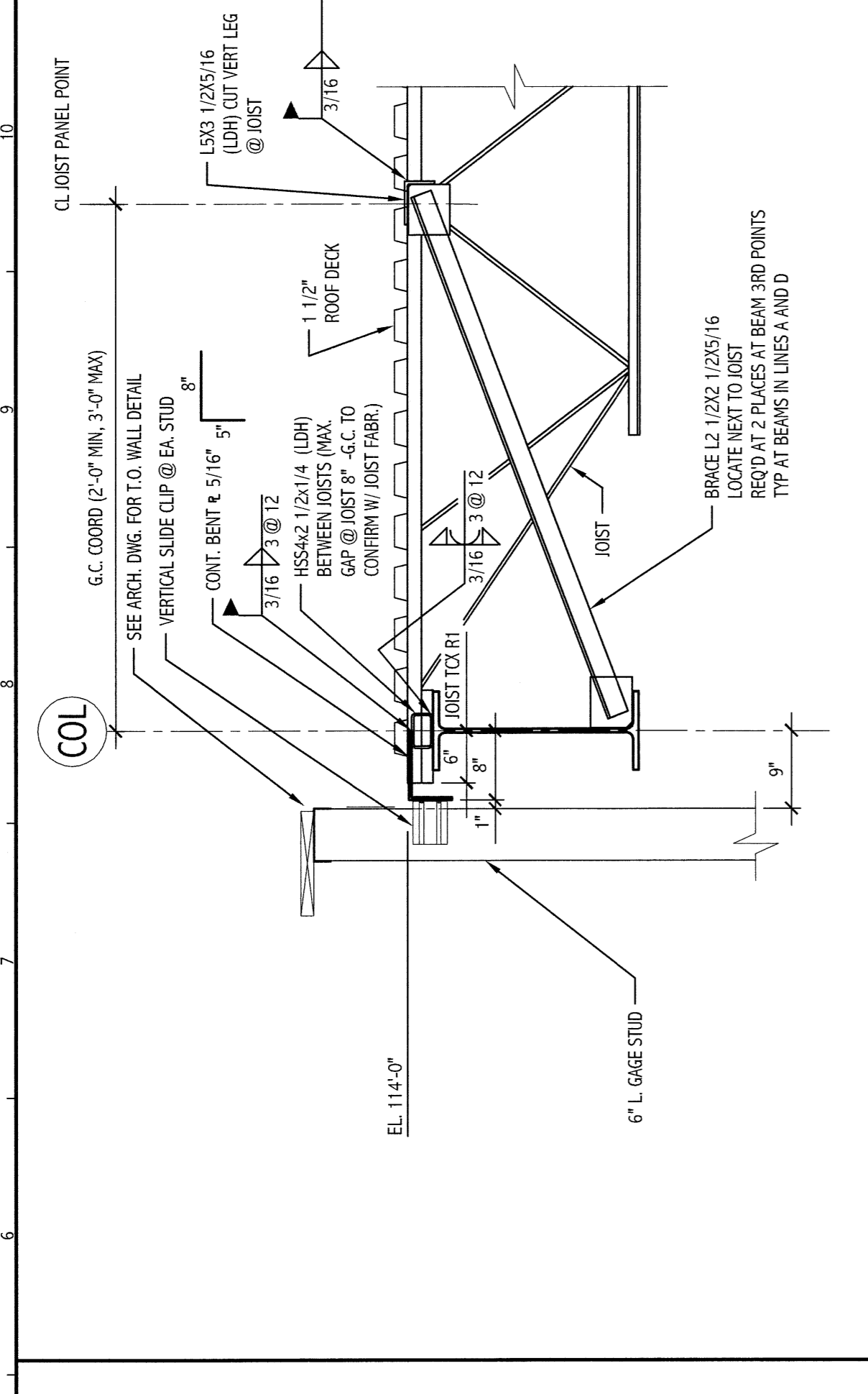
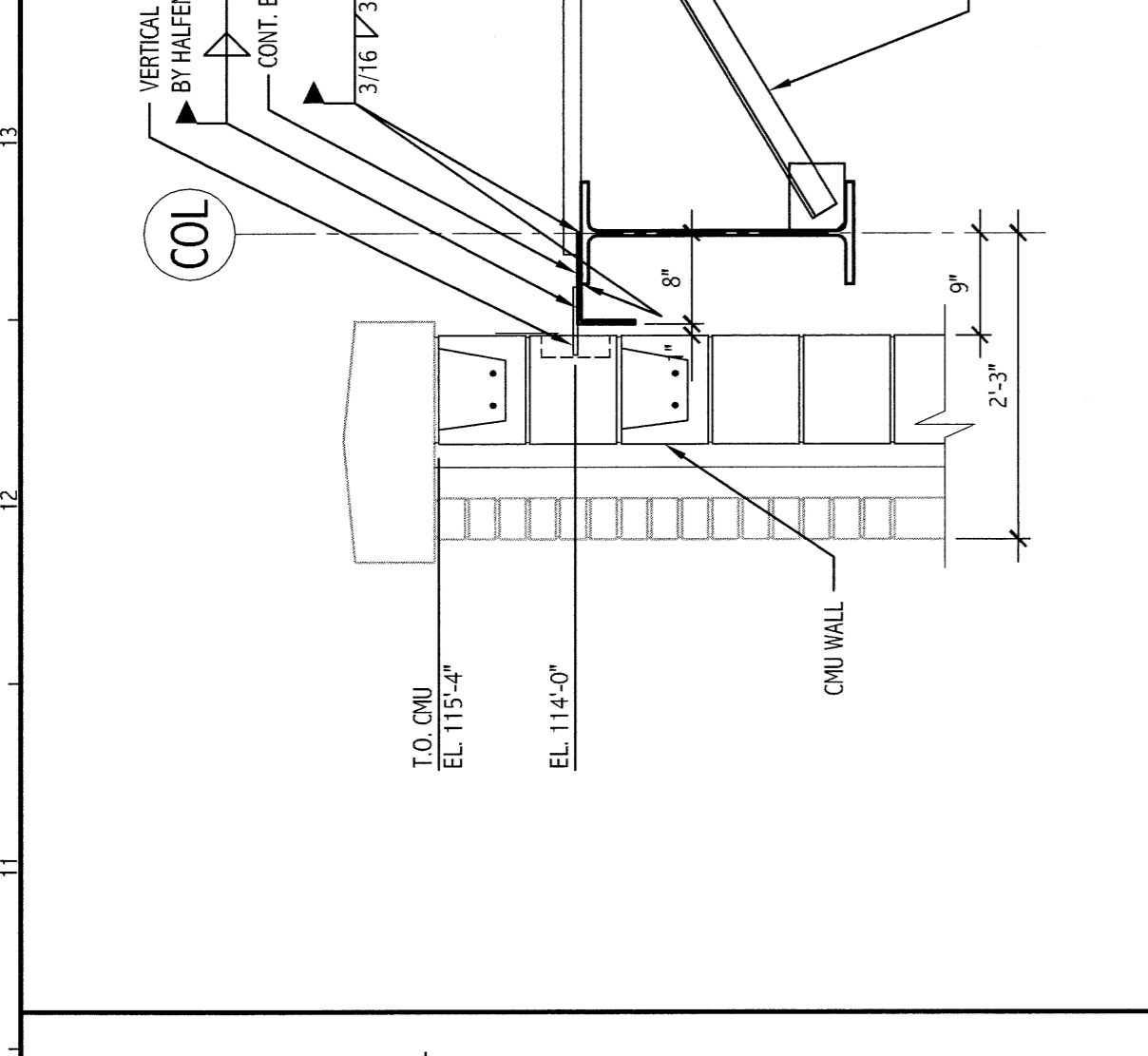
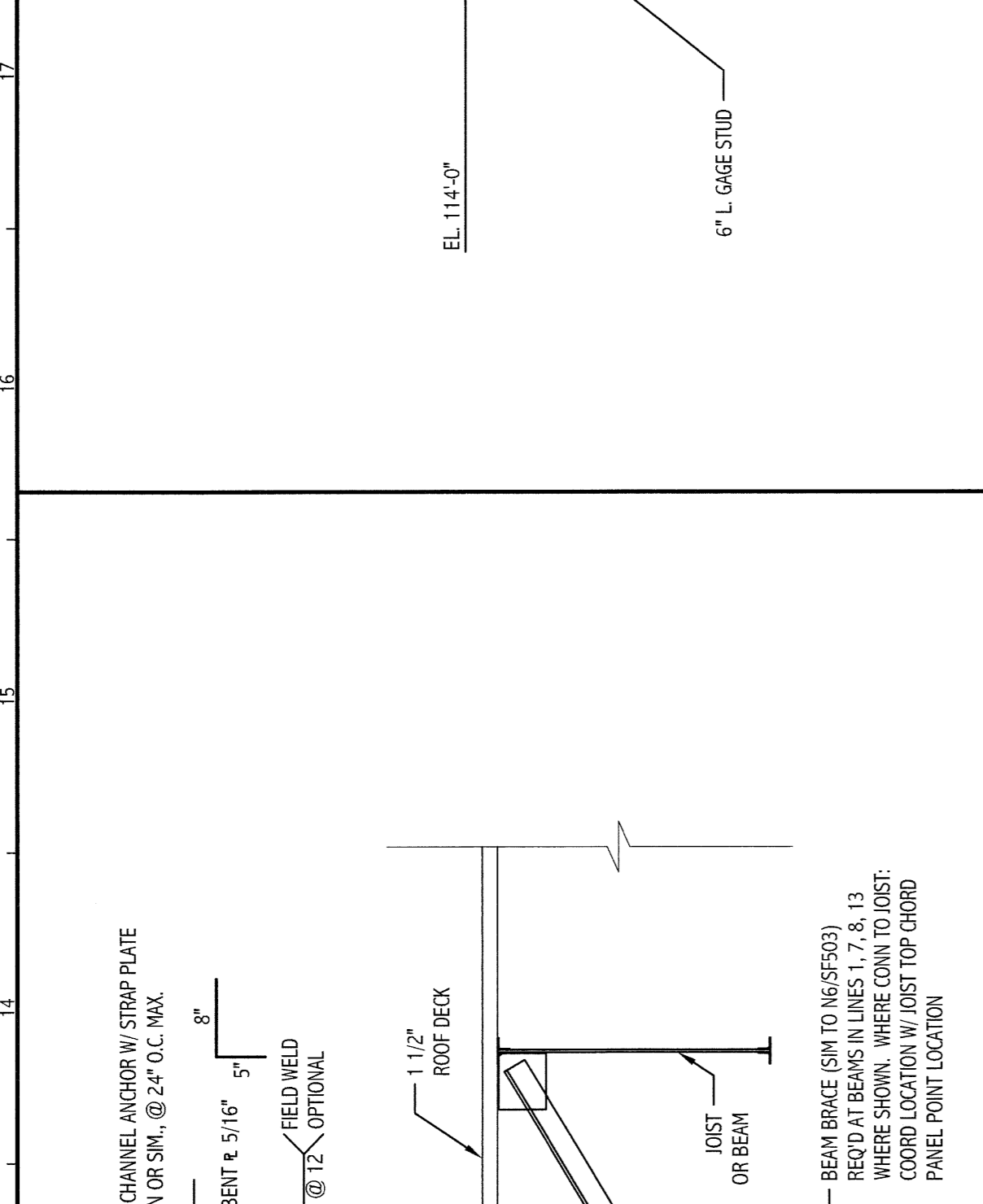
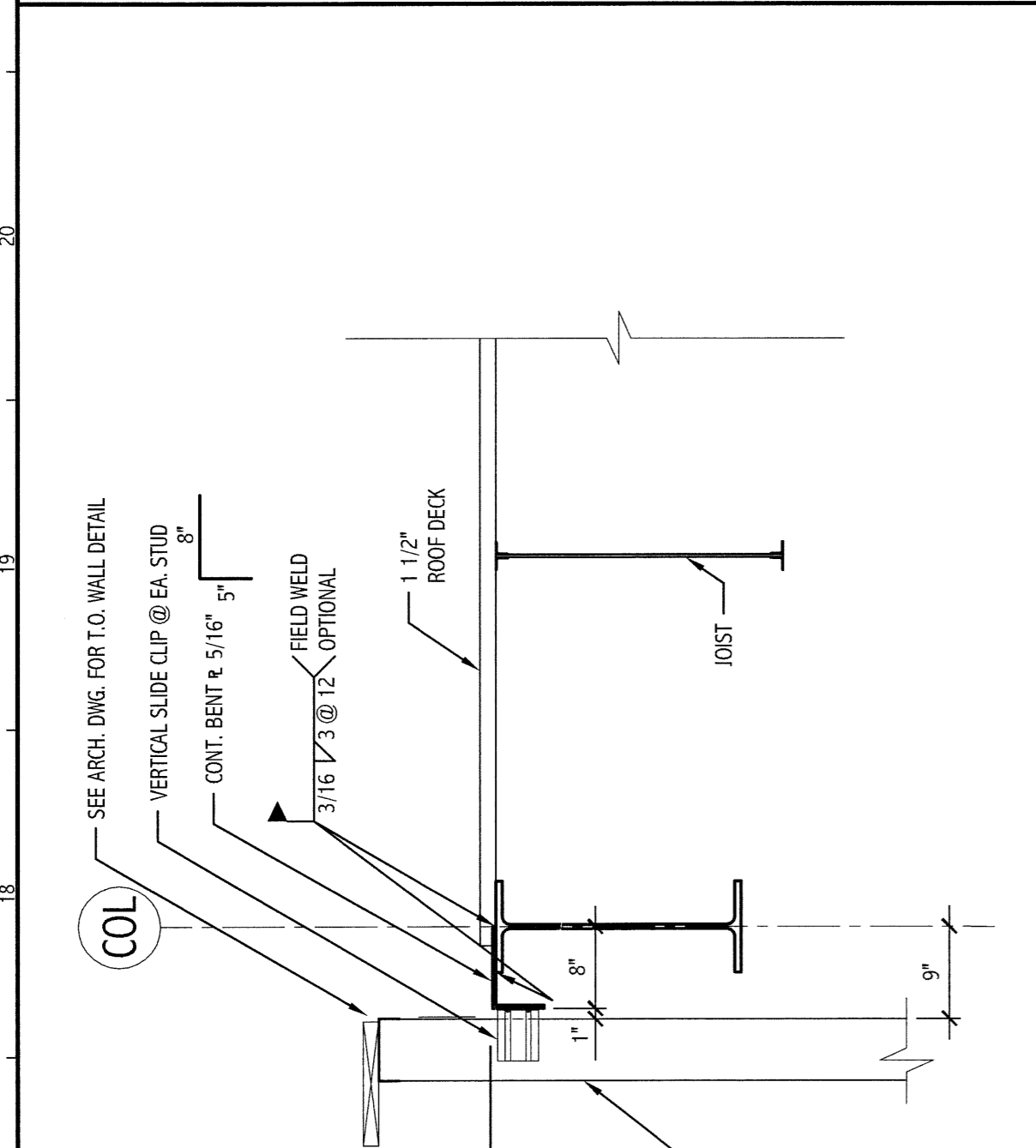
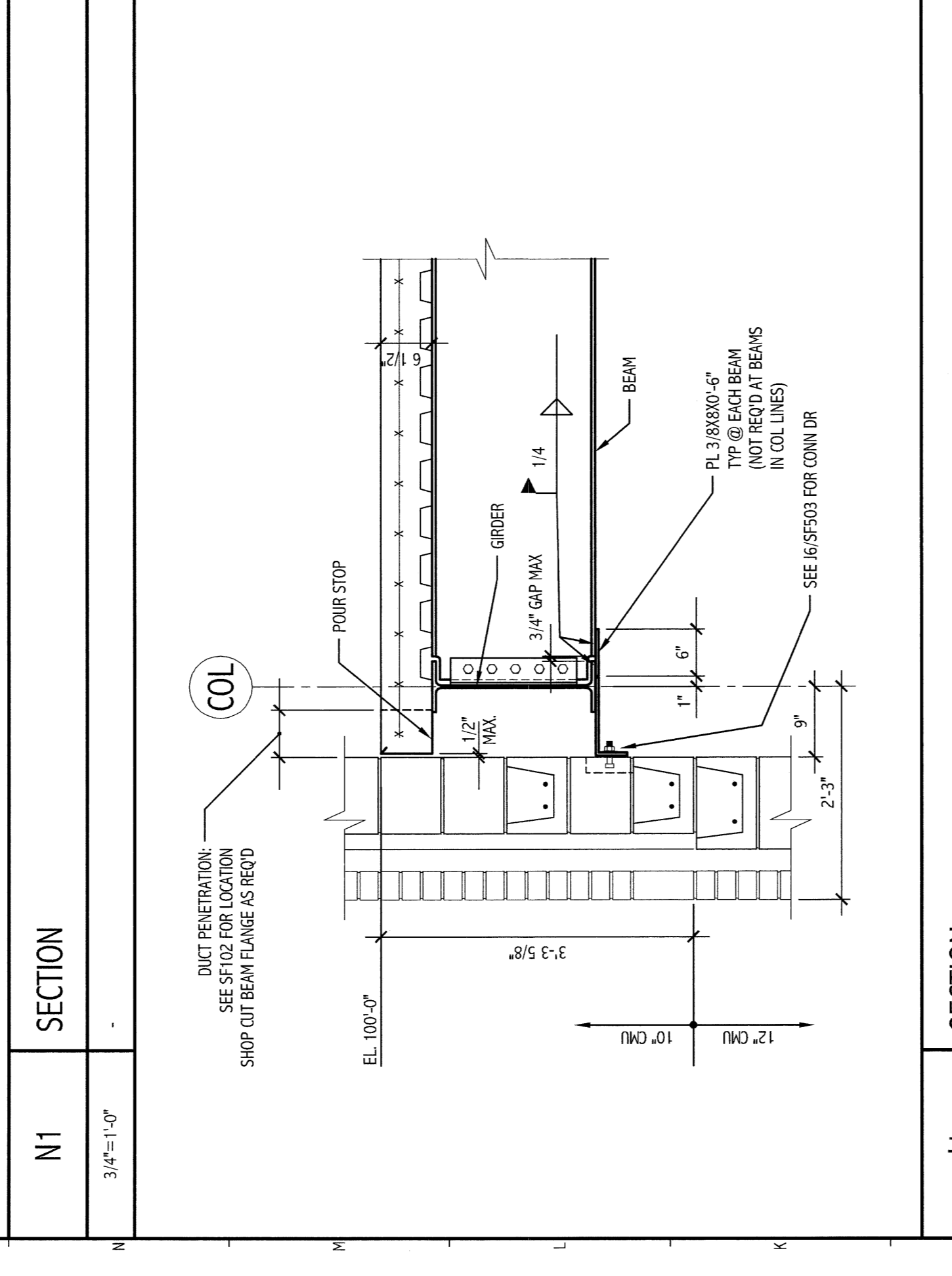
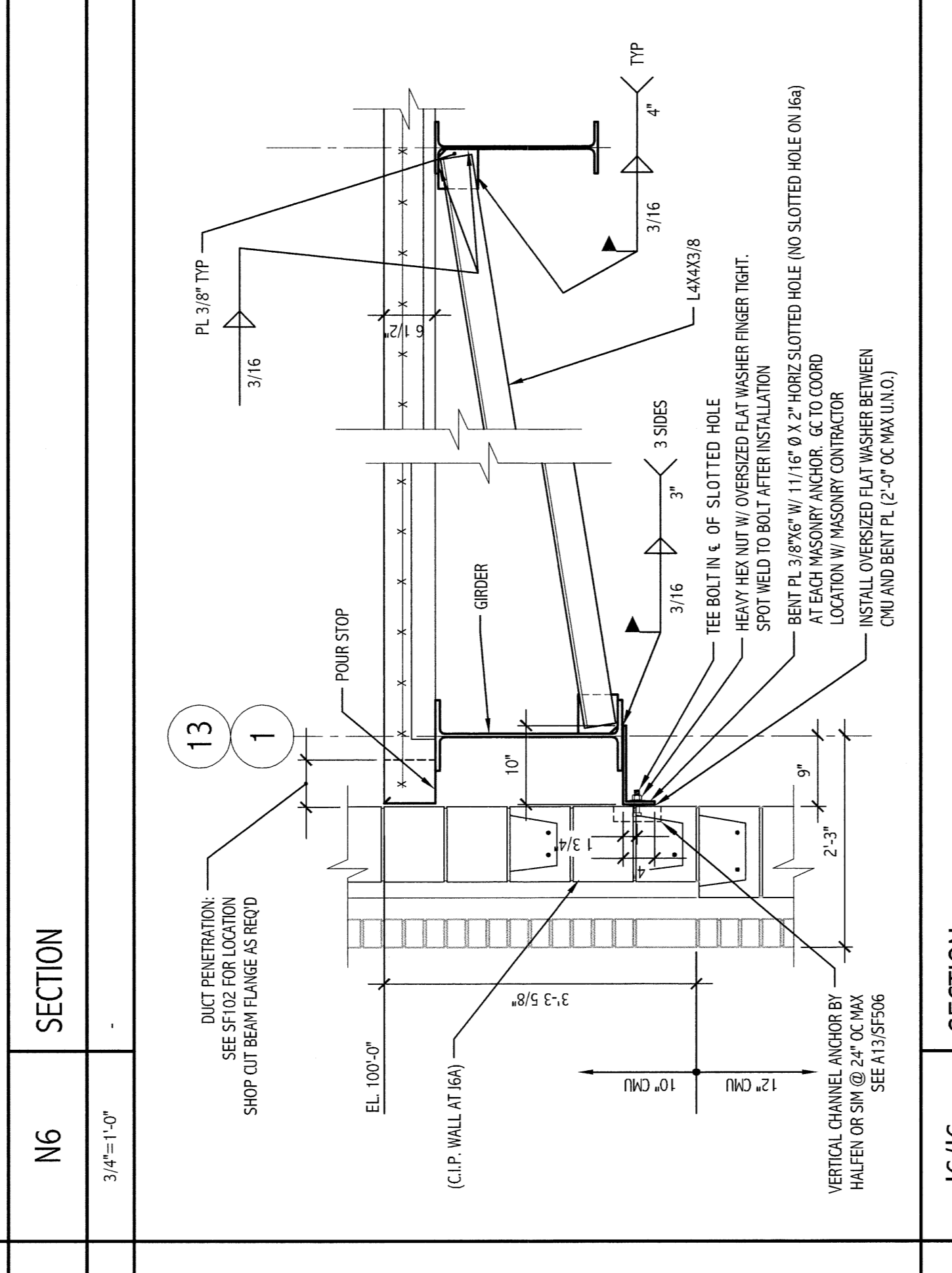
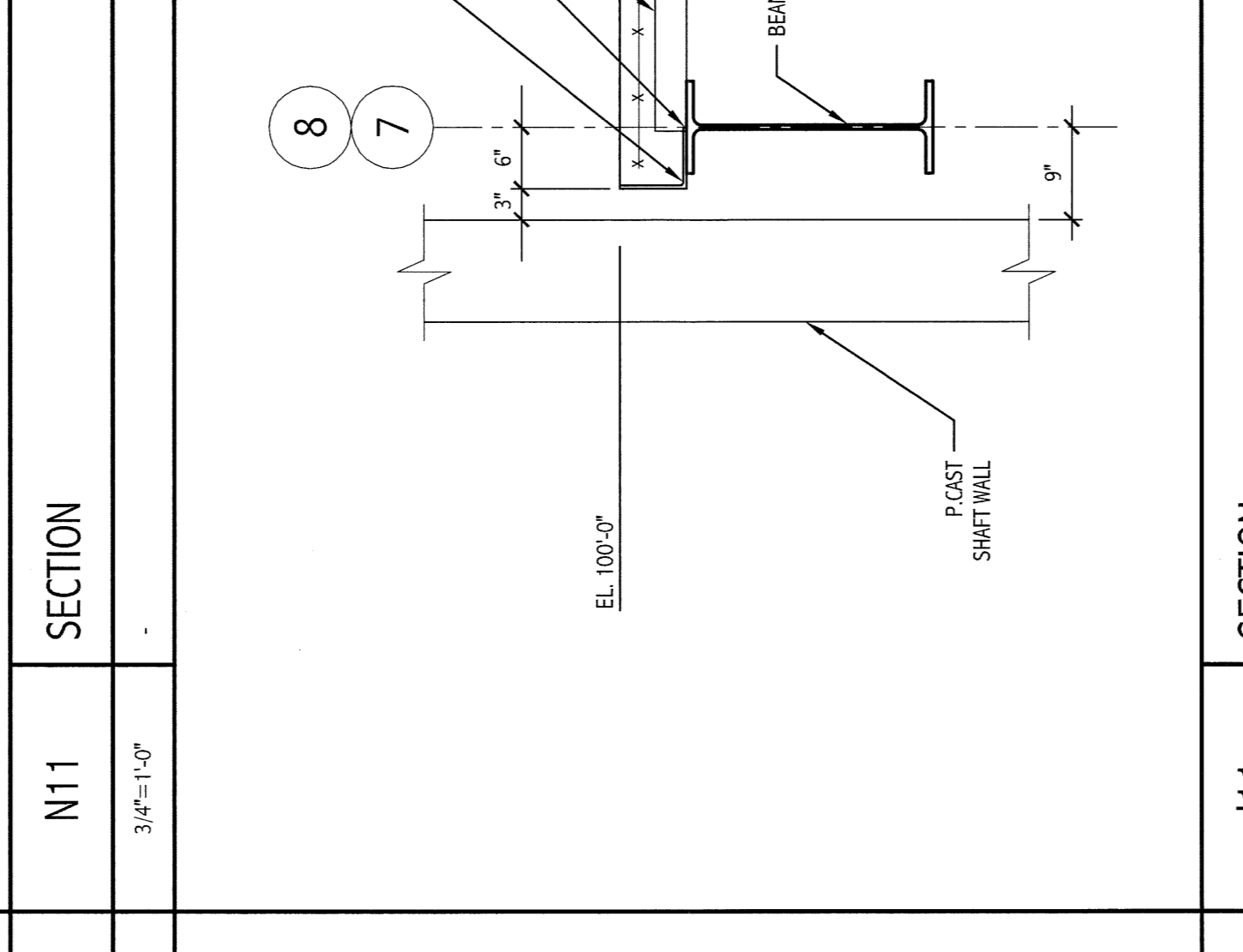
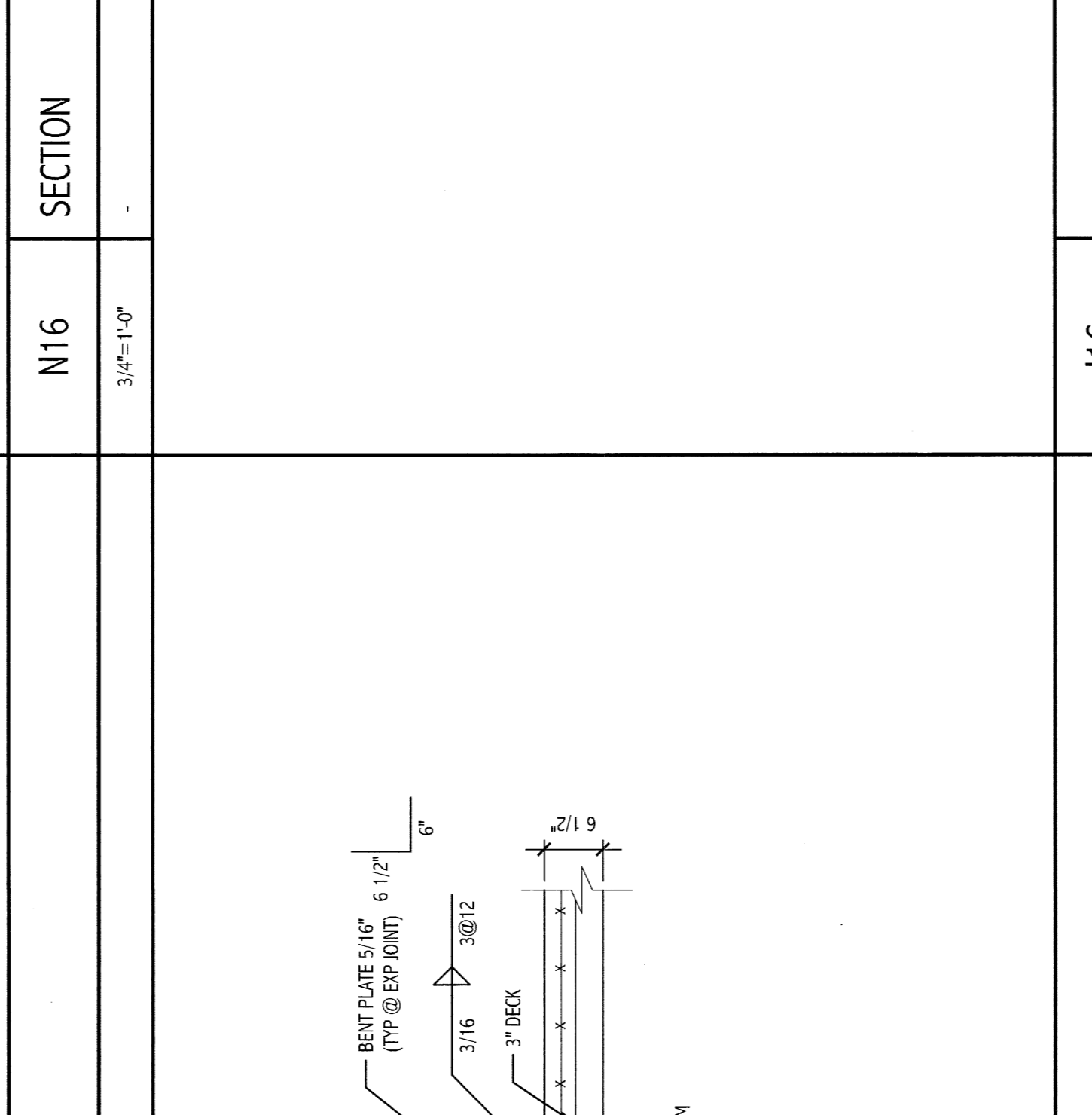
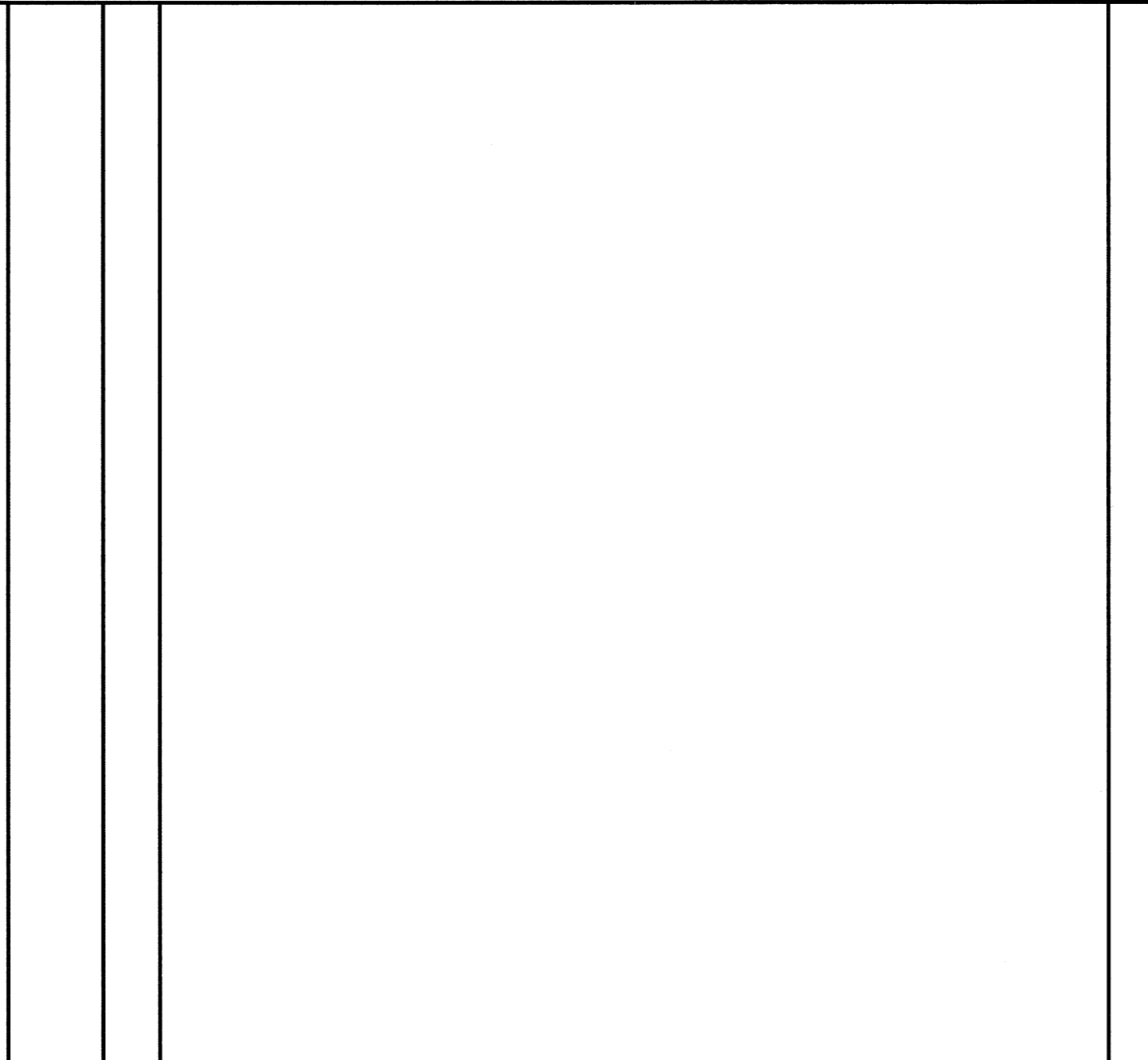


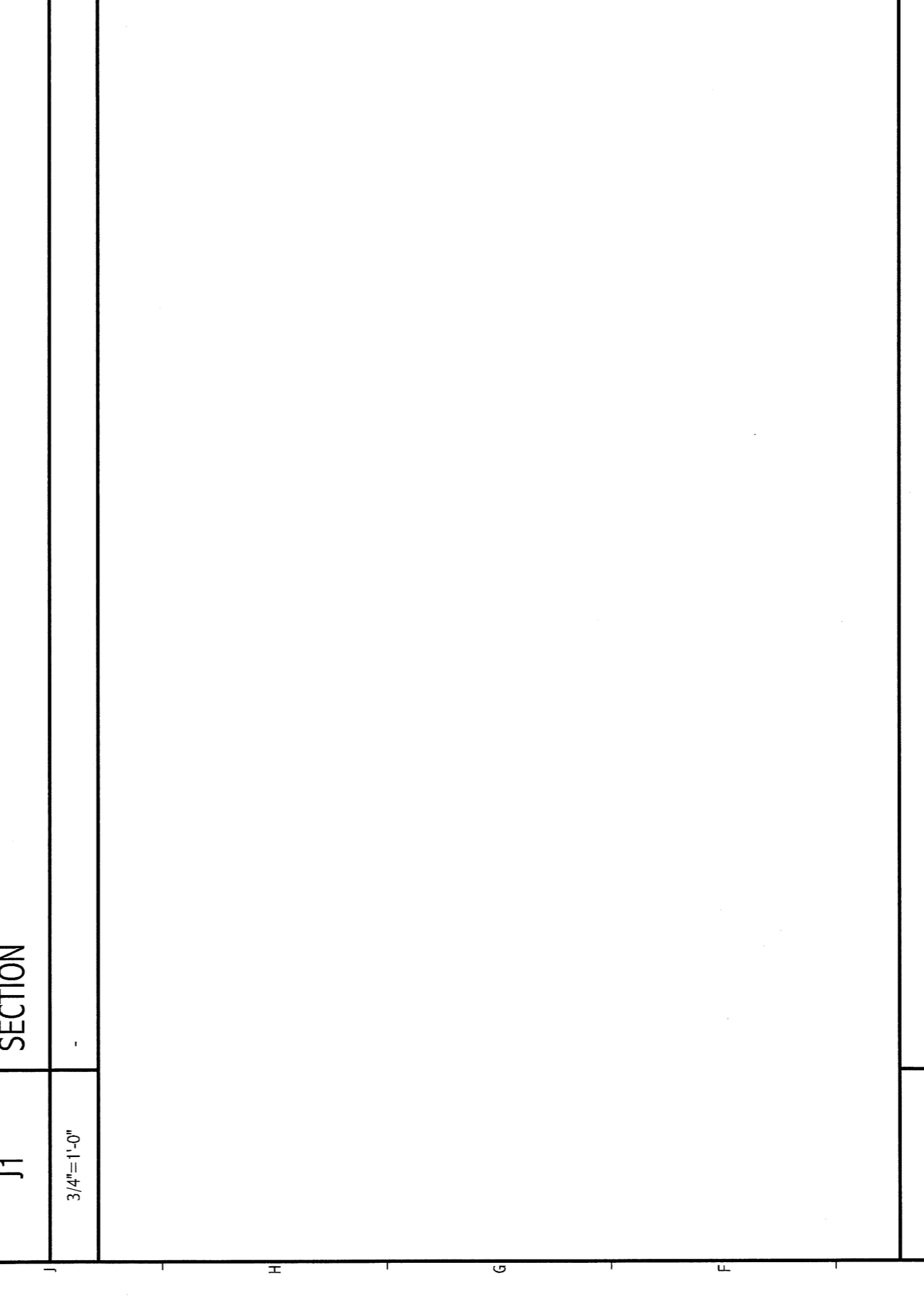
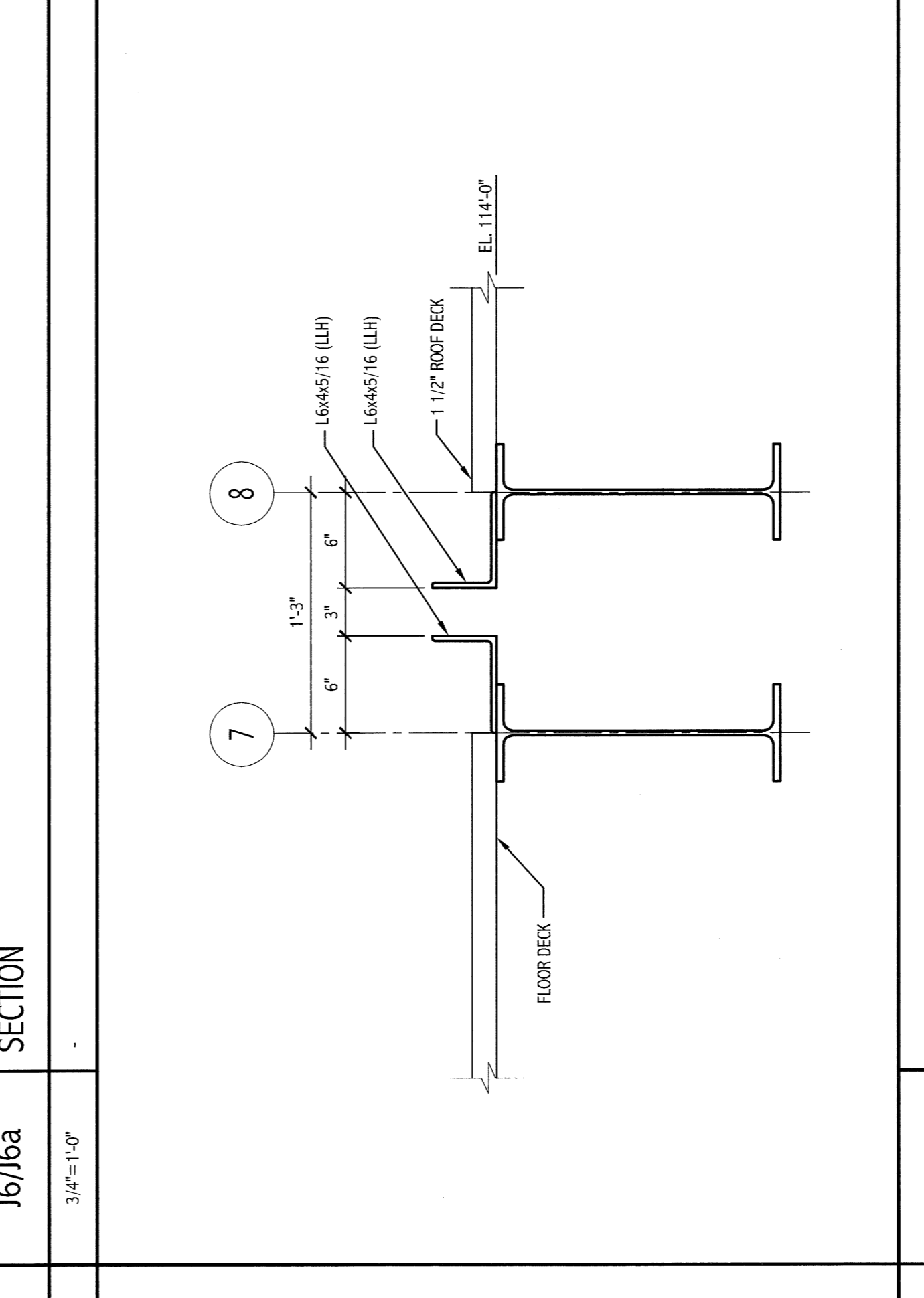
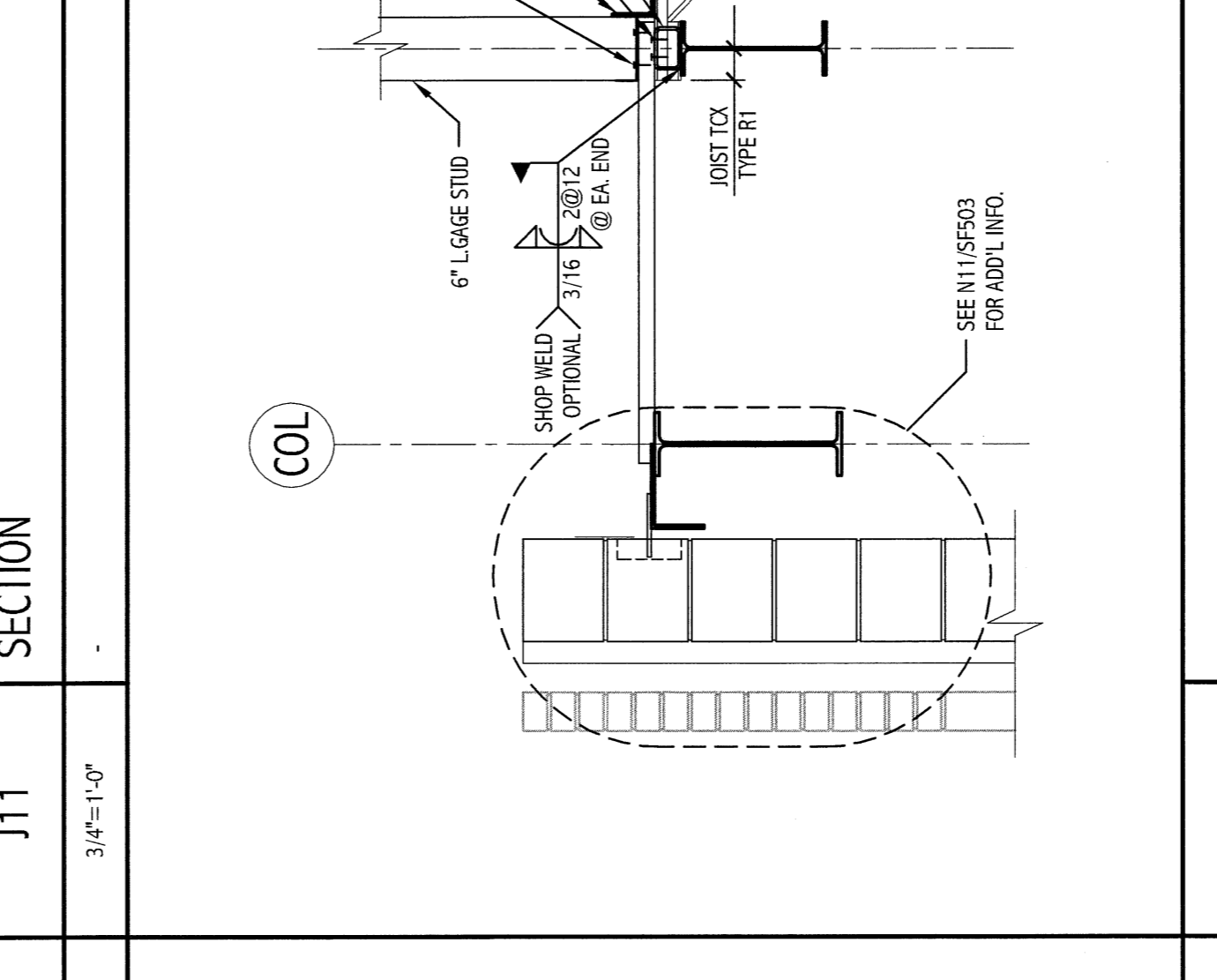
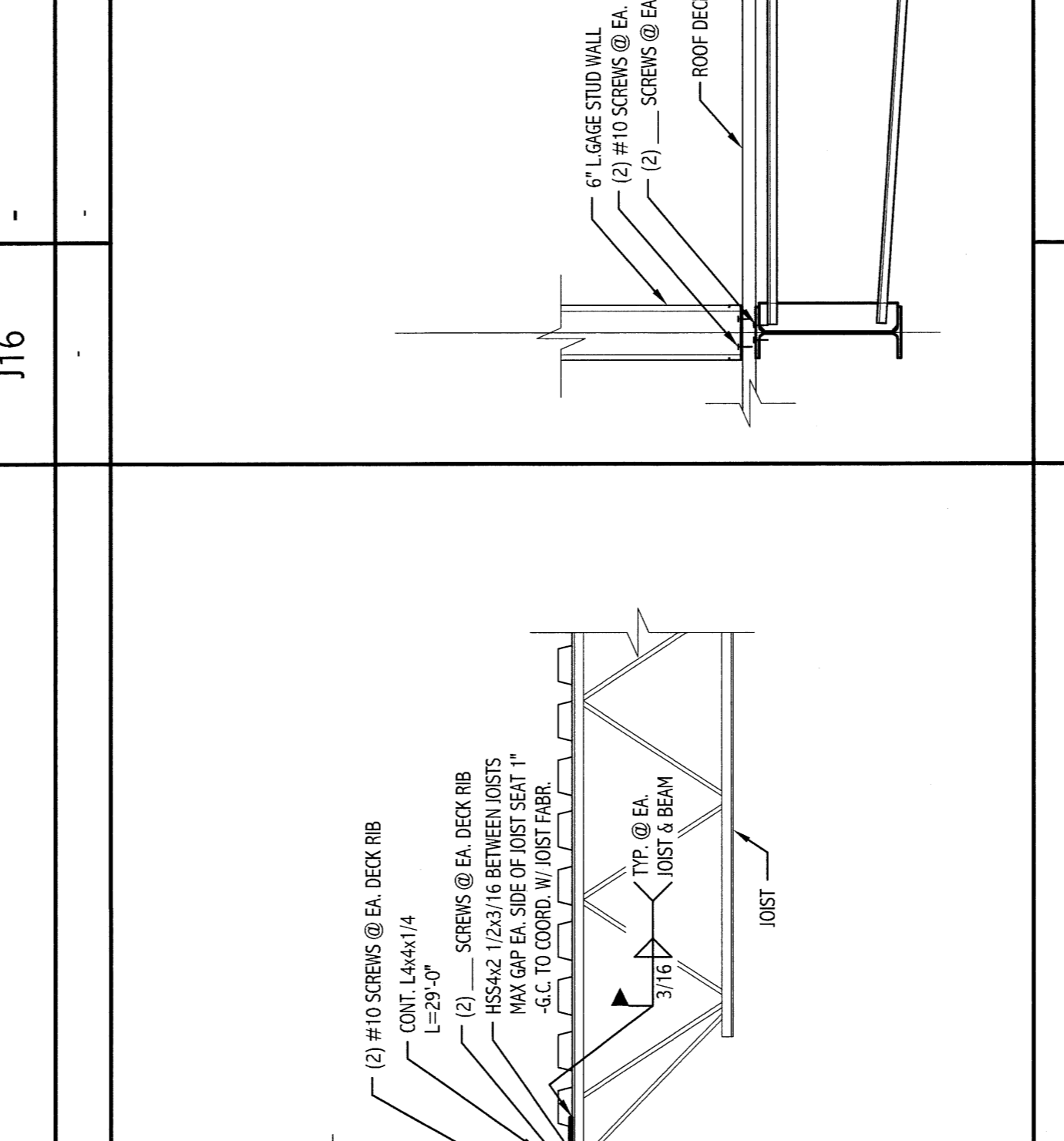
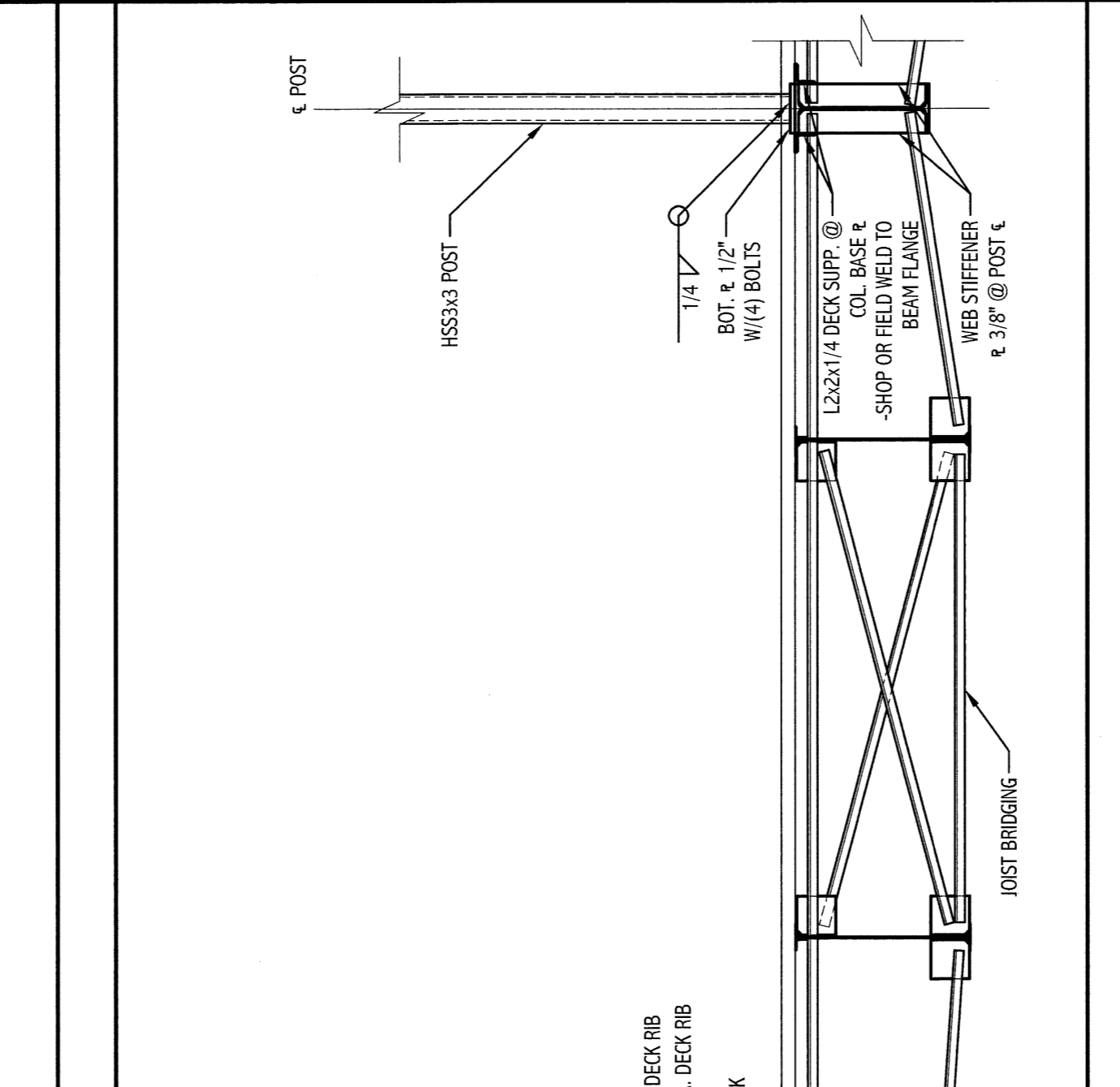
NOTES:
 1. SEE DETAIL FOR PROJECT GENERAL NOTES.
 2. SEE DETAIL FOR PROJECT GENERAL NOTES.



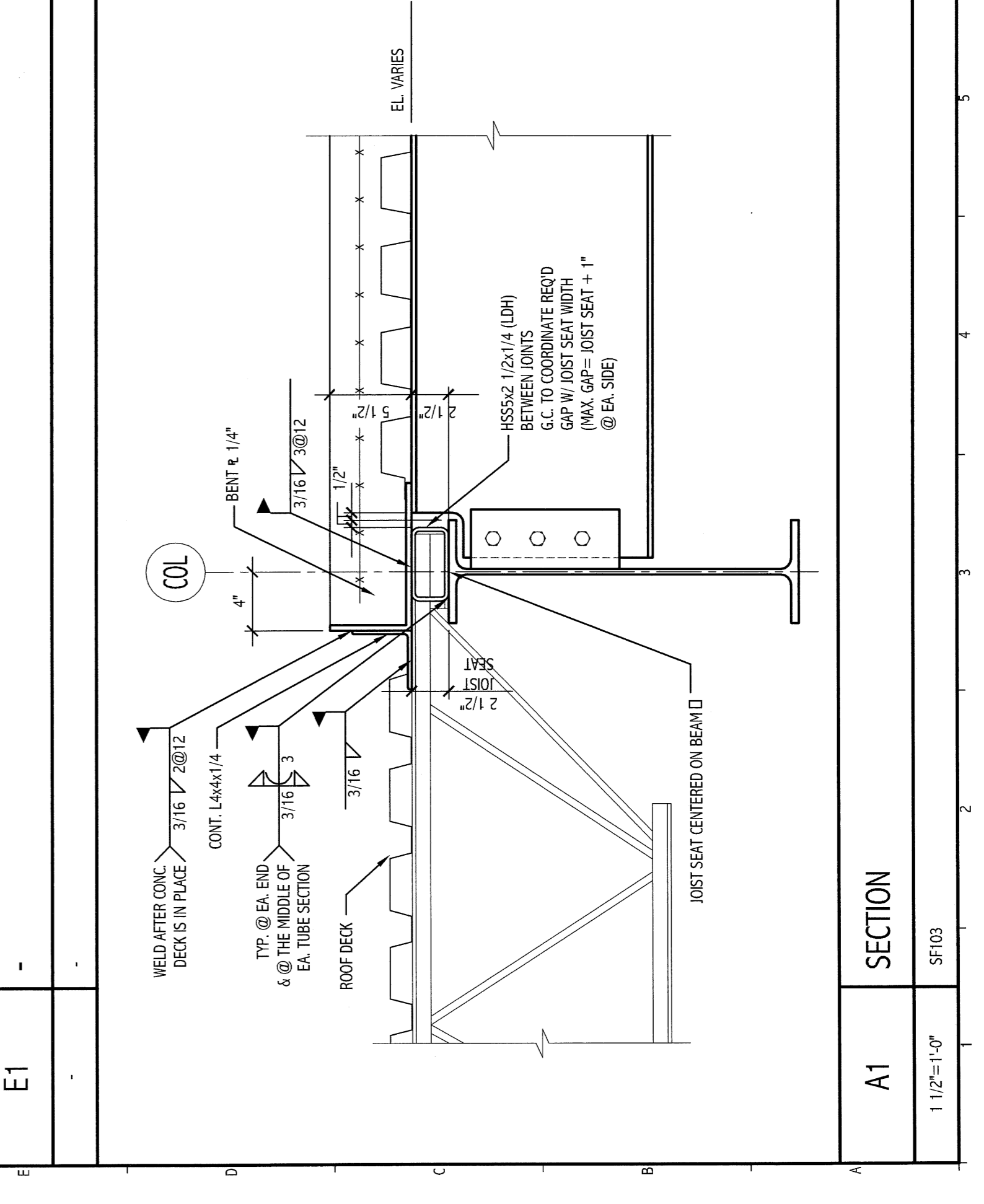
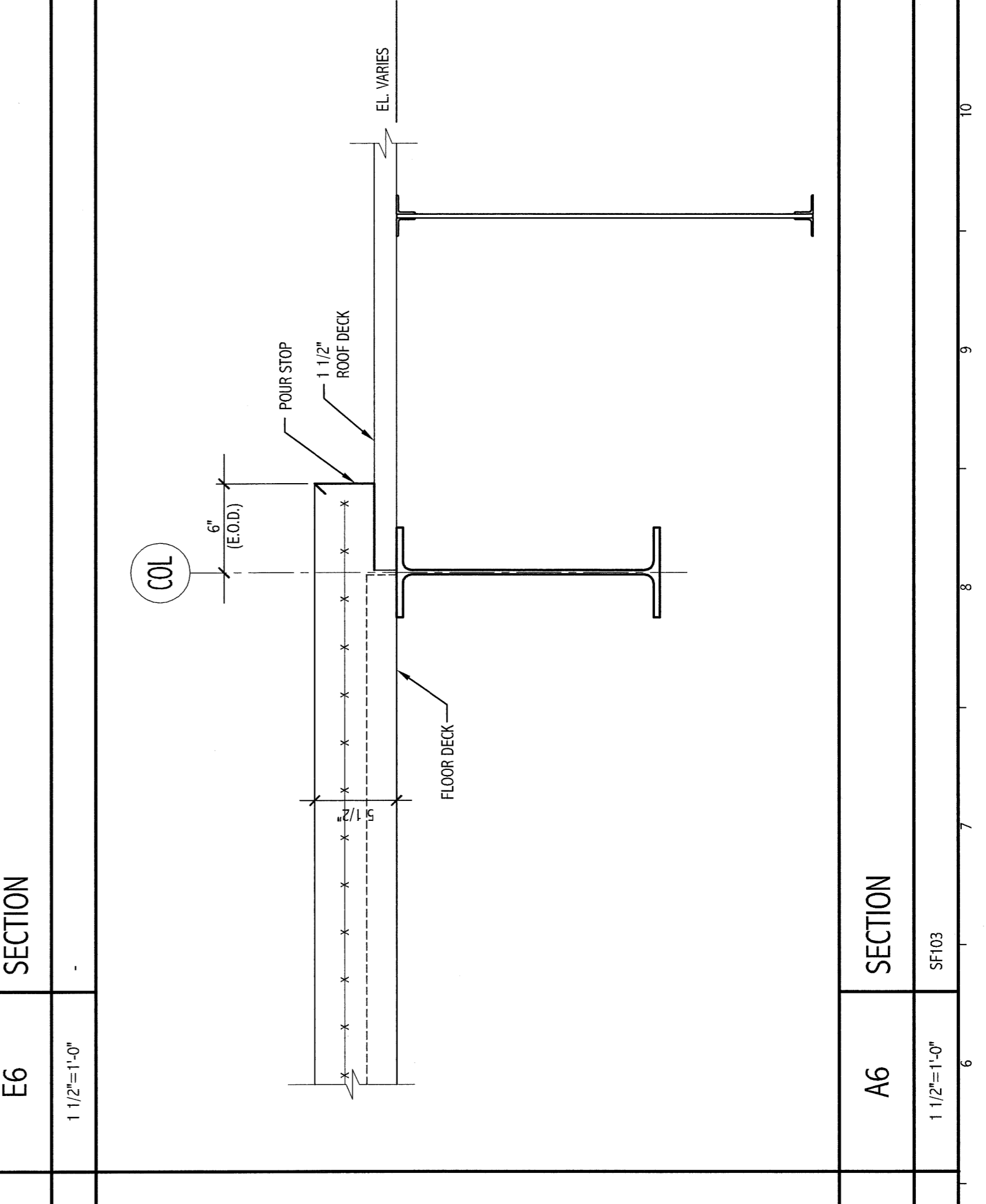
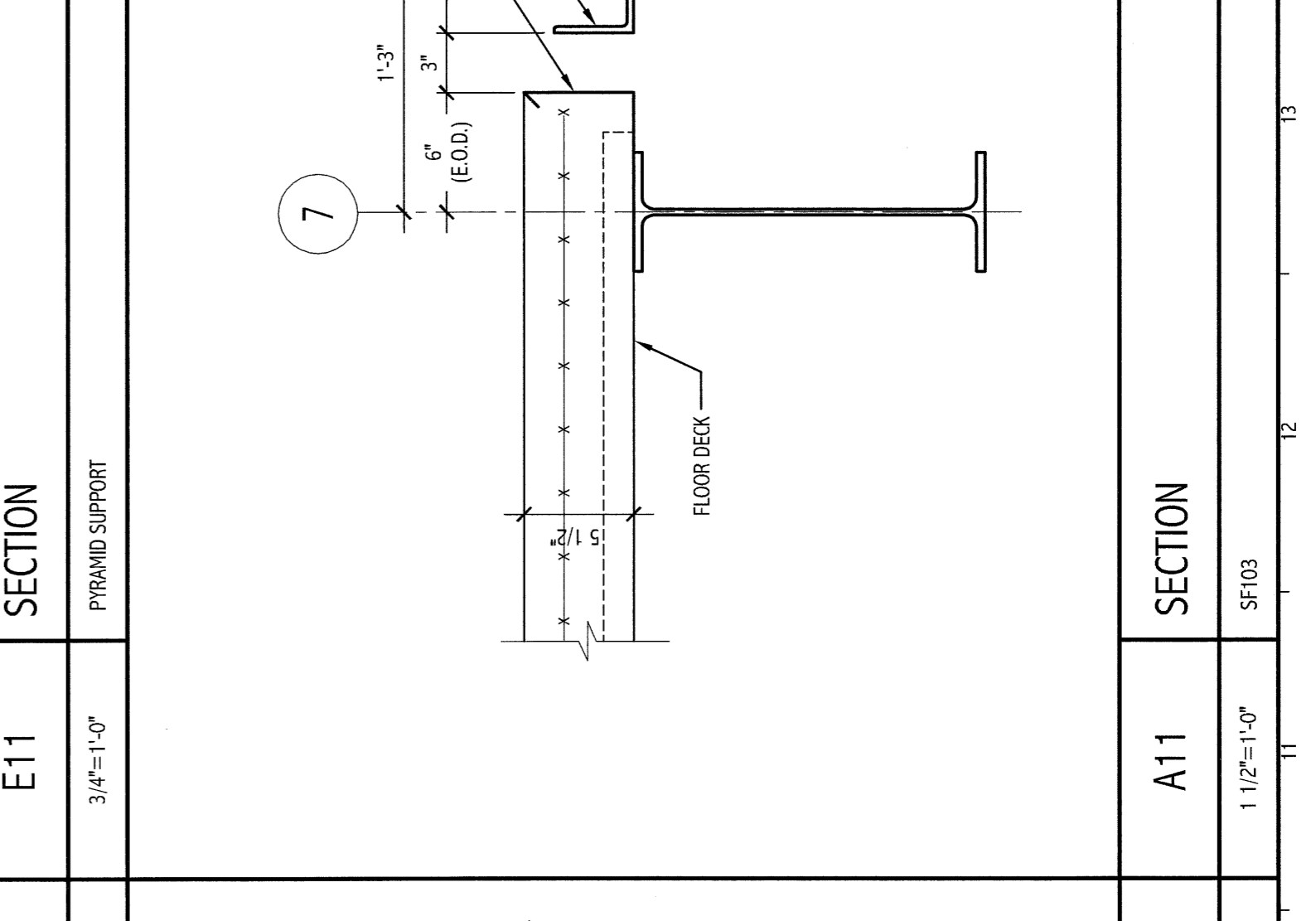
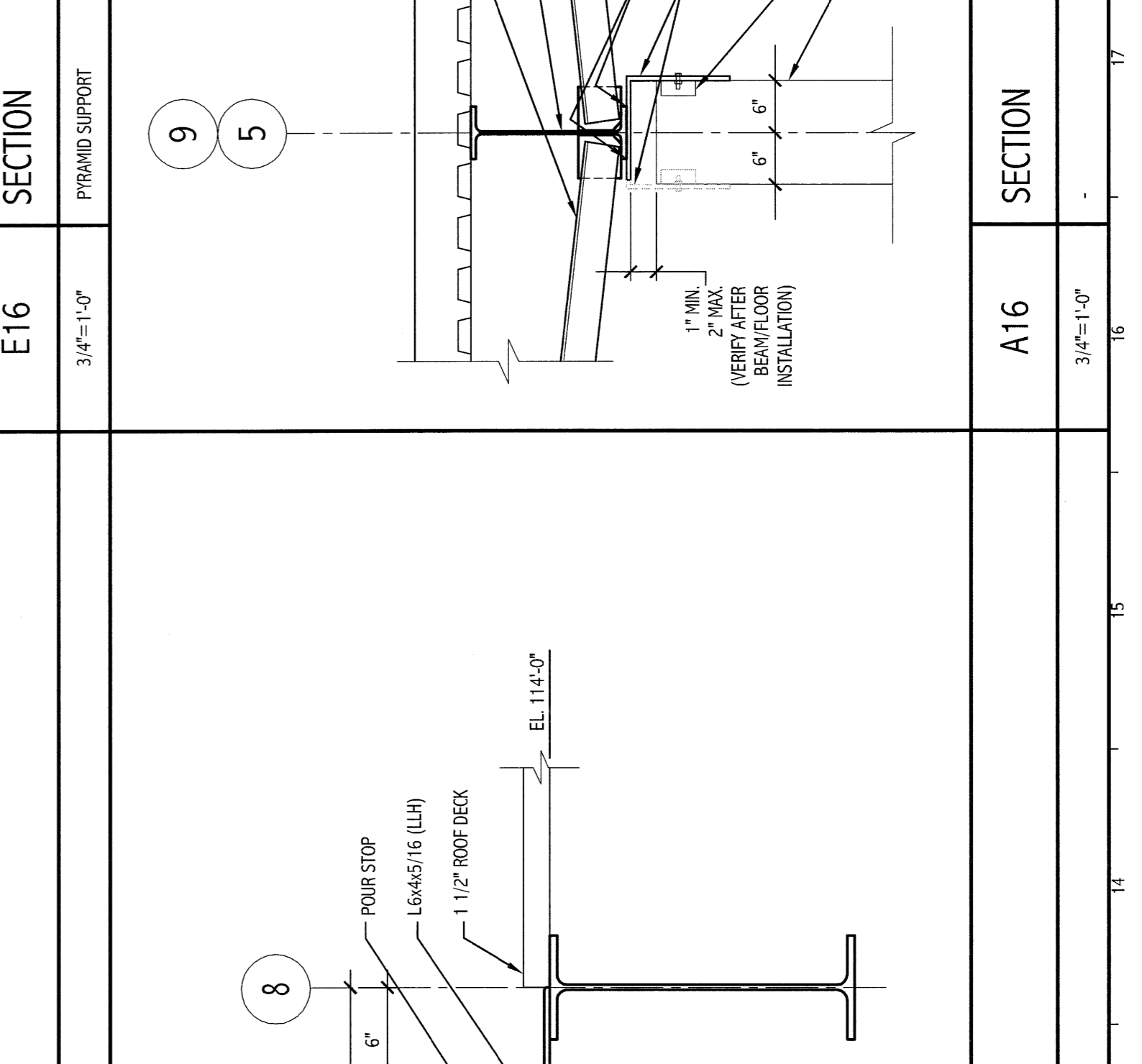
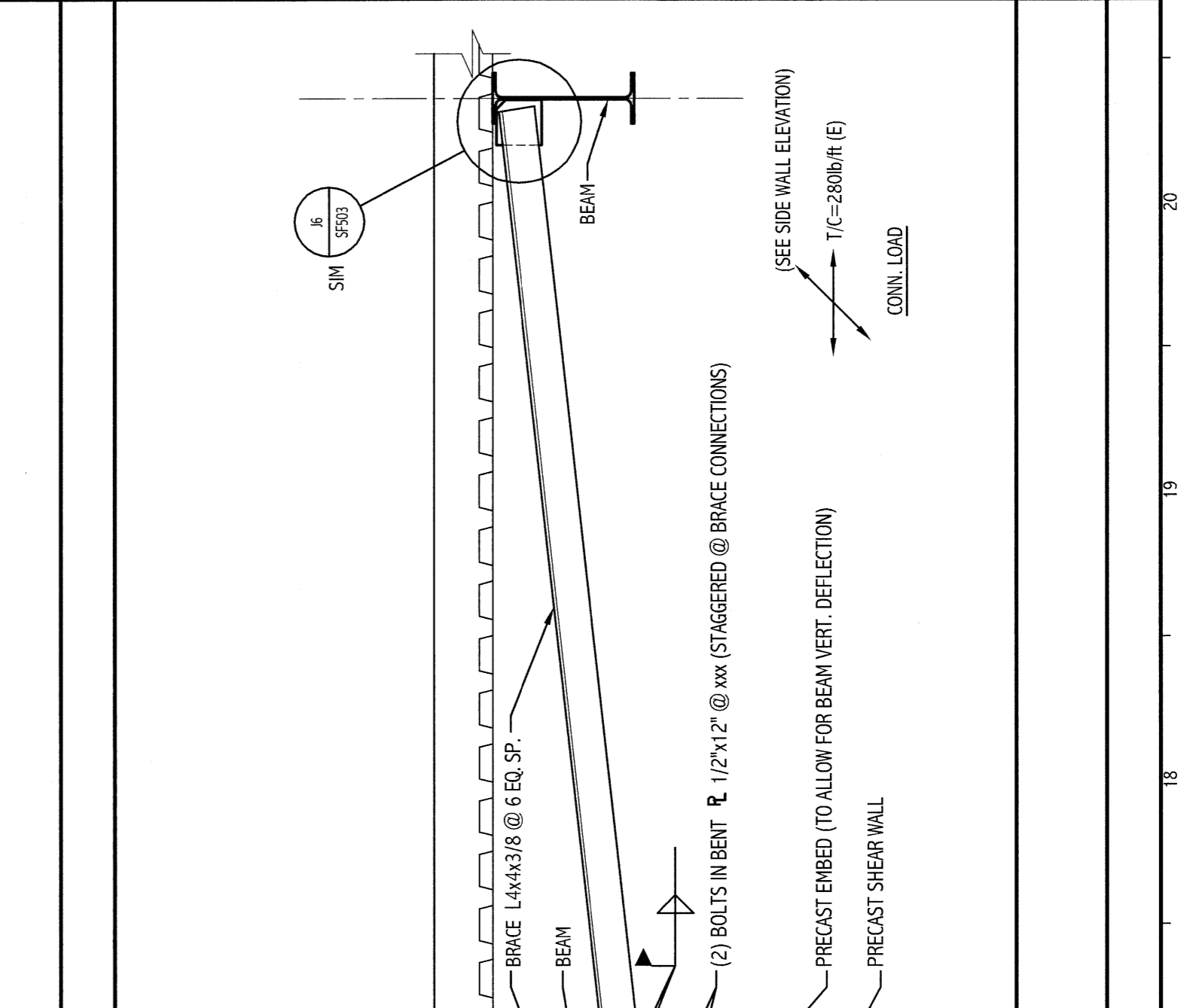
SECTION	SECTION
N1	N16
N6	N11
N16	N11



SECTION	SECTION
J16	J11
J11	J16
J16/J6	J1



SECTION	SECTION
E16	E11
E11	E16
E6	E1
E1	E6



SMRI
 ARCHITECTURE
 ENGINEERING
 PLANNING
 INTERIOR DESIGN
 COMMISSIONING

**MARTIN'S POINT HEALTH CARE
 MEDICAL OFFICE BUILDING**
 PORTLAND, OREGON

144 East Street, Suite 600
 Portland, Oregon 97233
 PH (503) 773-3846
 FX (503) 773-0370
 www.smri.com

**ISSUED FOR G.M.P. & PERMITTING
 4-3-09**

CURRENT ISSUE STATUS: 00-00-00 DATE: 00-00-00

PROJECT NUMBER: SF503
 SHEET NUMBER: 07
 SCALE: 1" = 8'-0"

PROJECT MANAGER: AJP
 ARCHITECT: SMRI
 SHEET NO.: SF503
 DATE: 08/23

**FRAMING
 SECTIONS AND DETAILS**
 SHEET TITLE