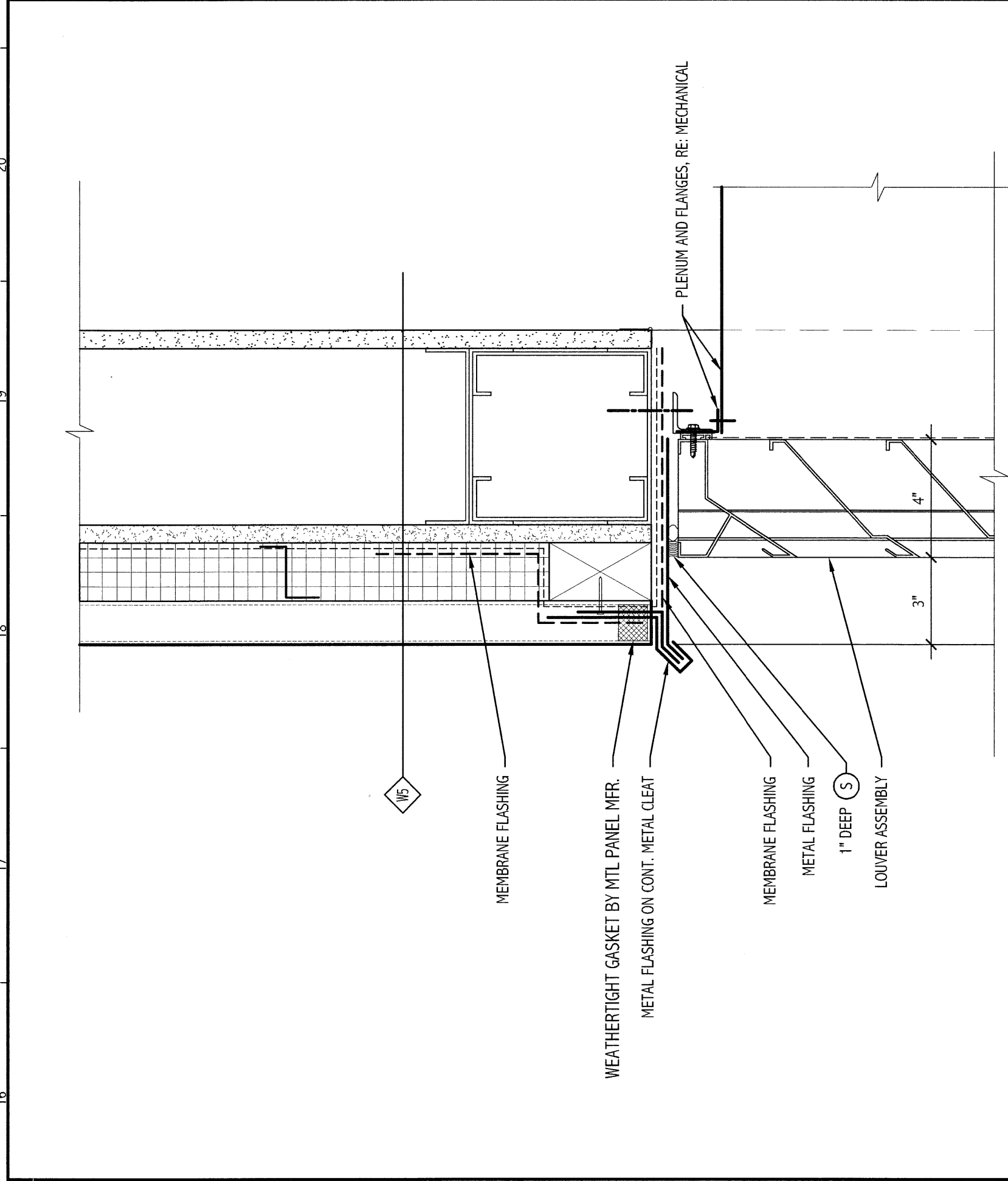
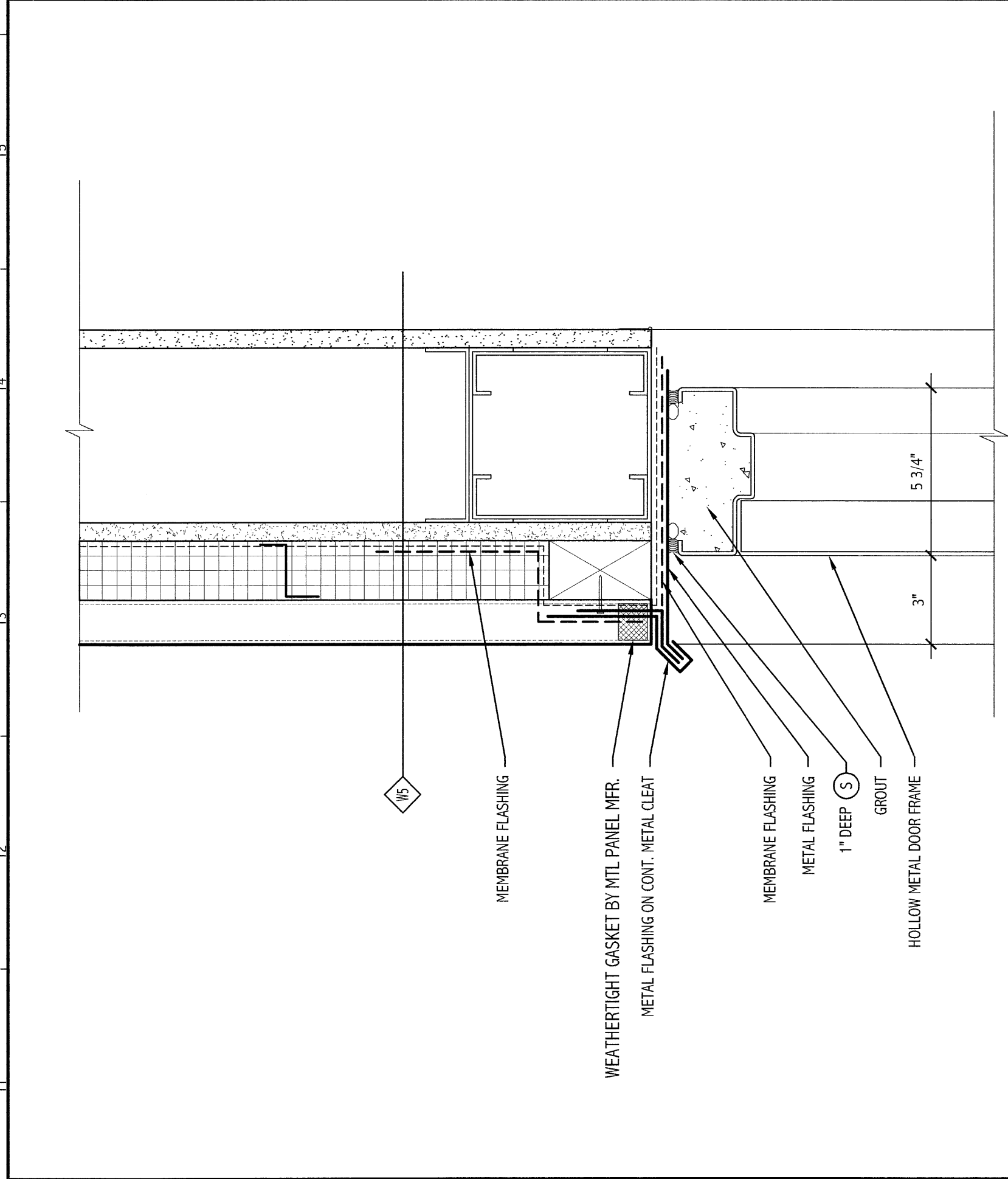


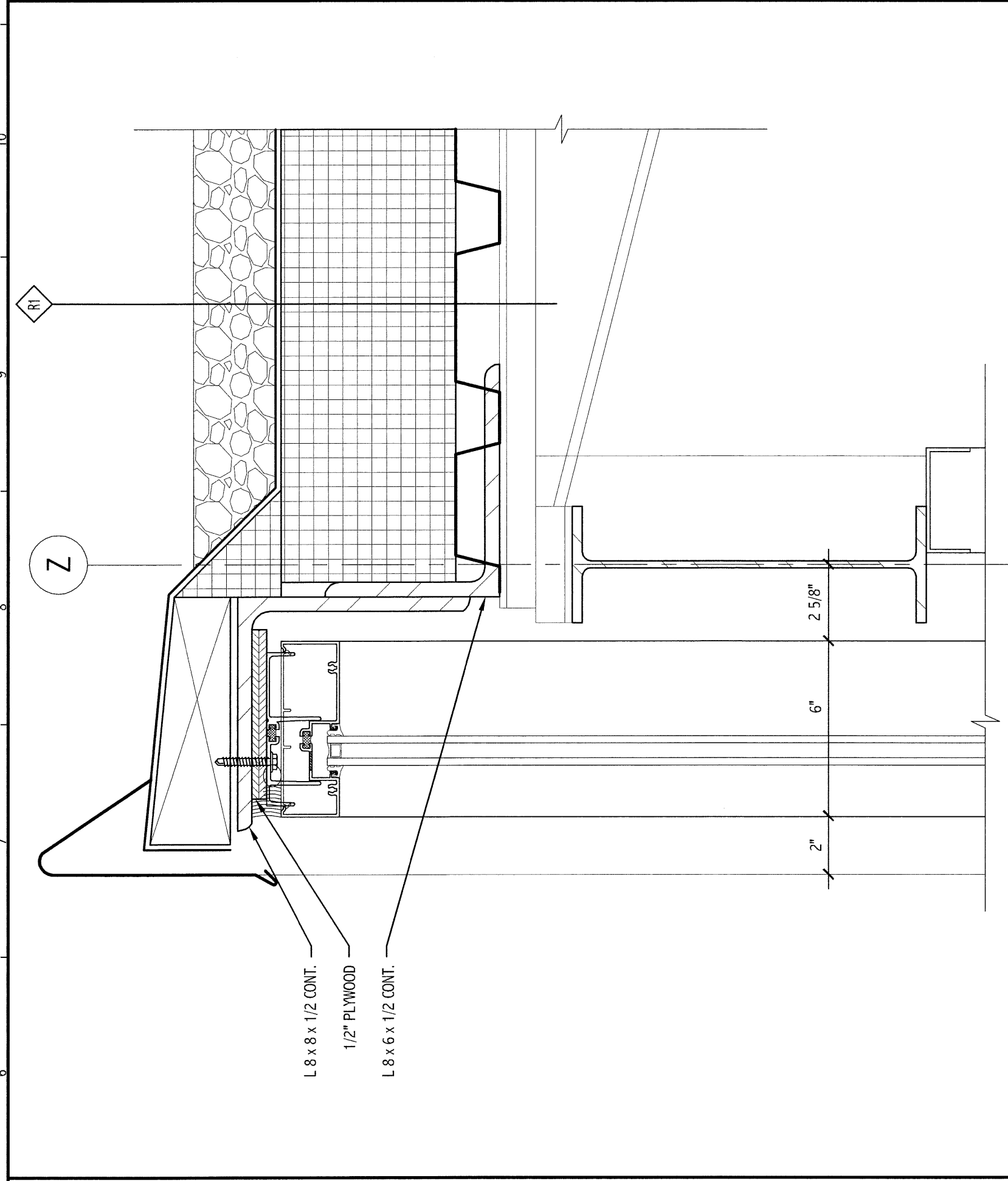
GENERAL NOTES:
 1. SEE G001 FOR PROJECT GENERAL NOTES.



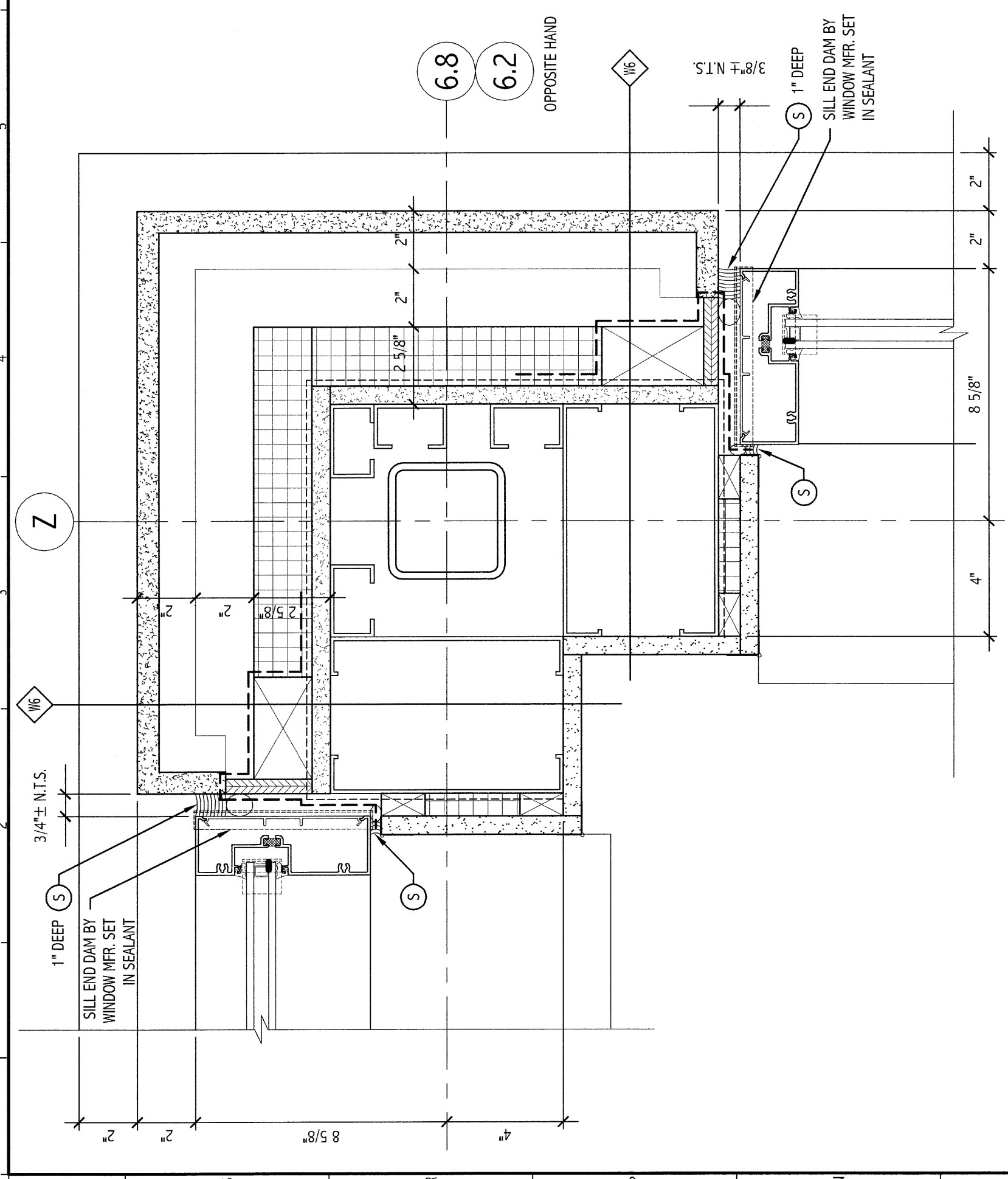
M16 SECTION DETAIL
 3" = 1'-0"



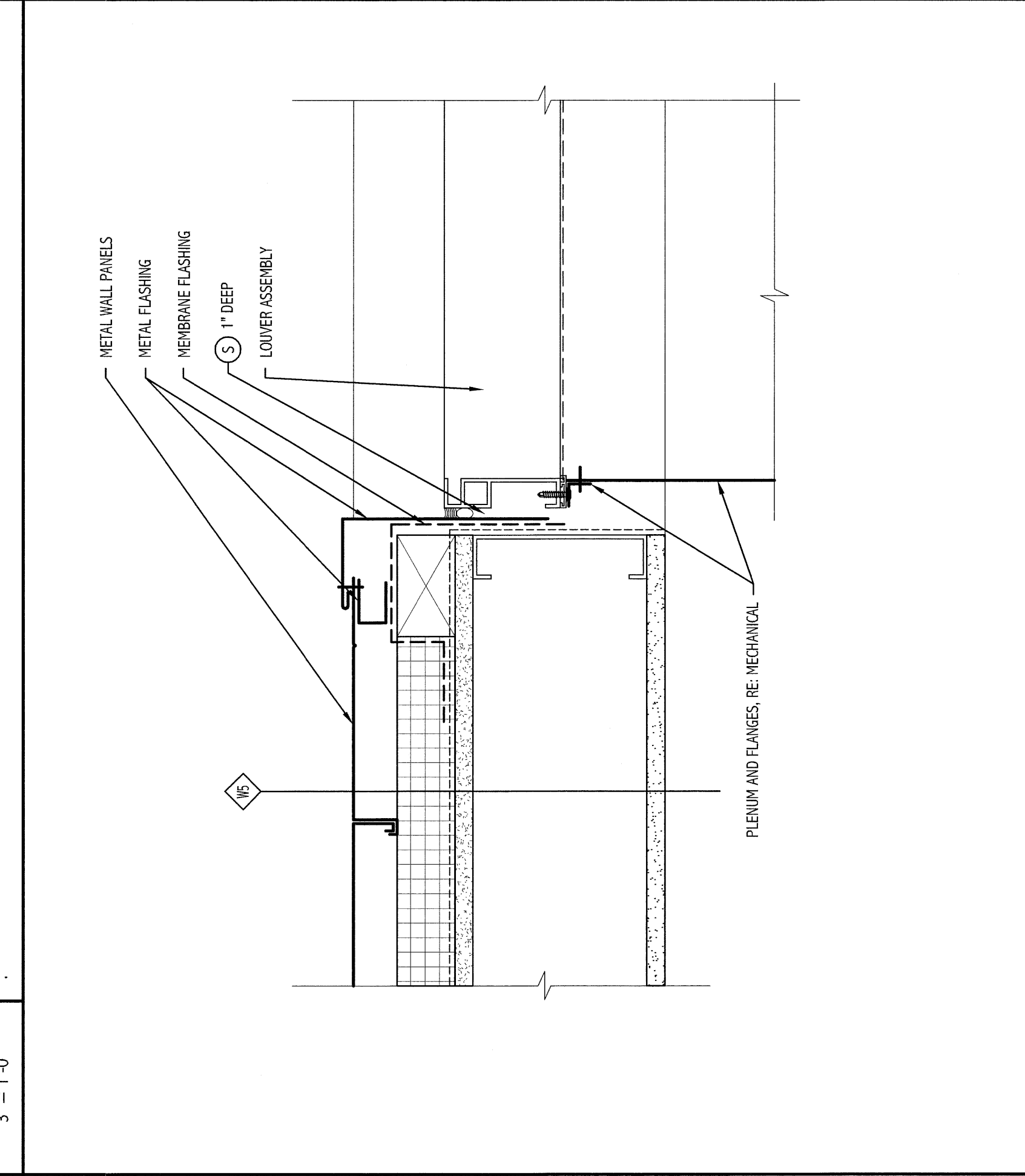
M11 SECTION DETAIL
 3" = 1'-0"



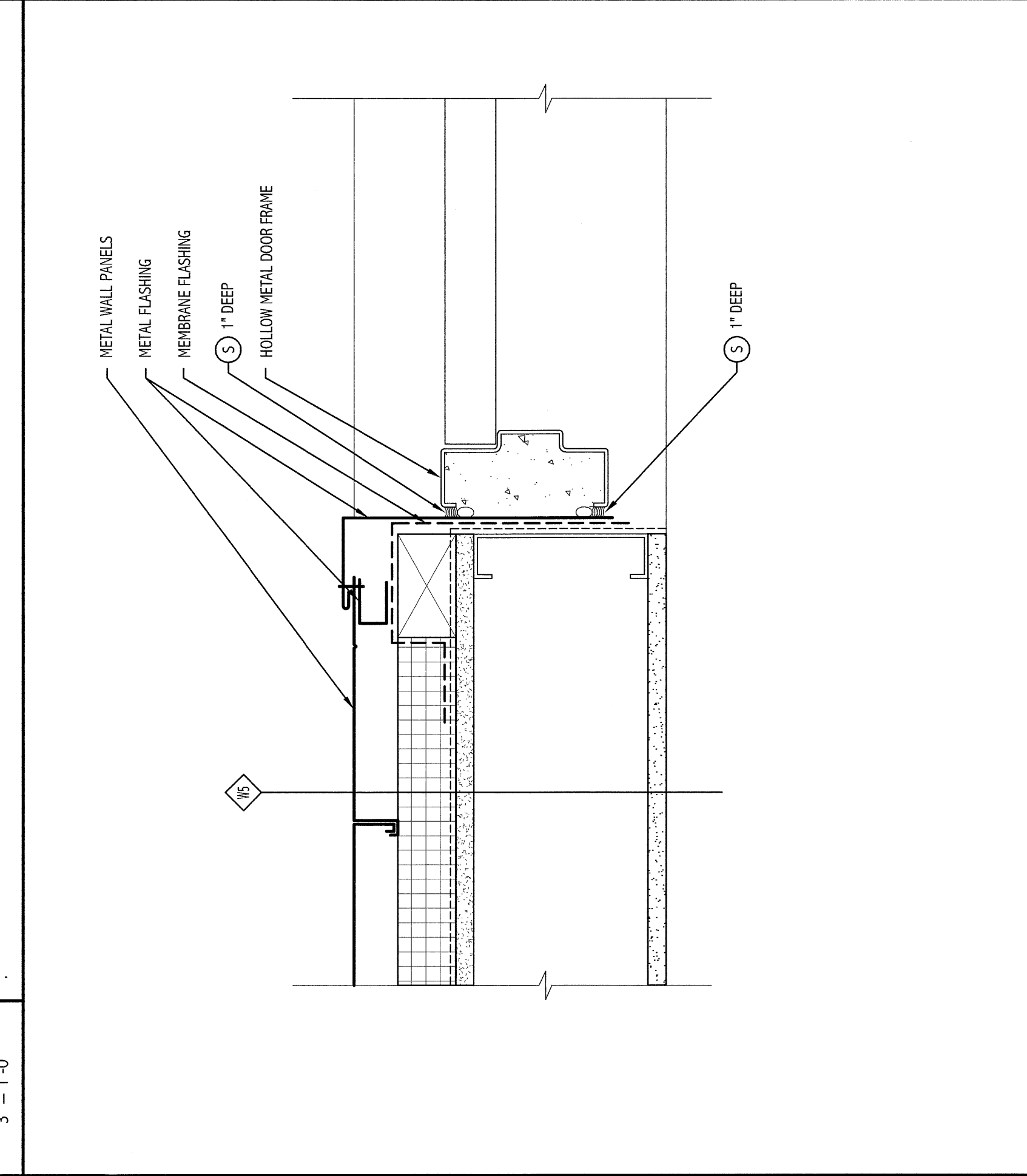
M6 SECTION DETAIL
 3" = 1'-0"



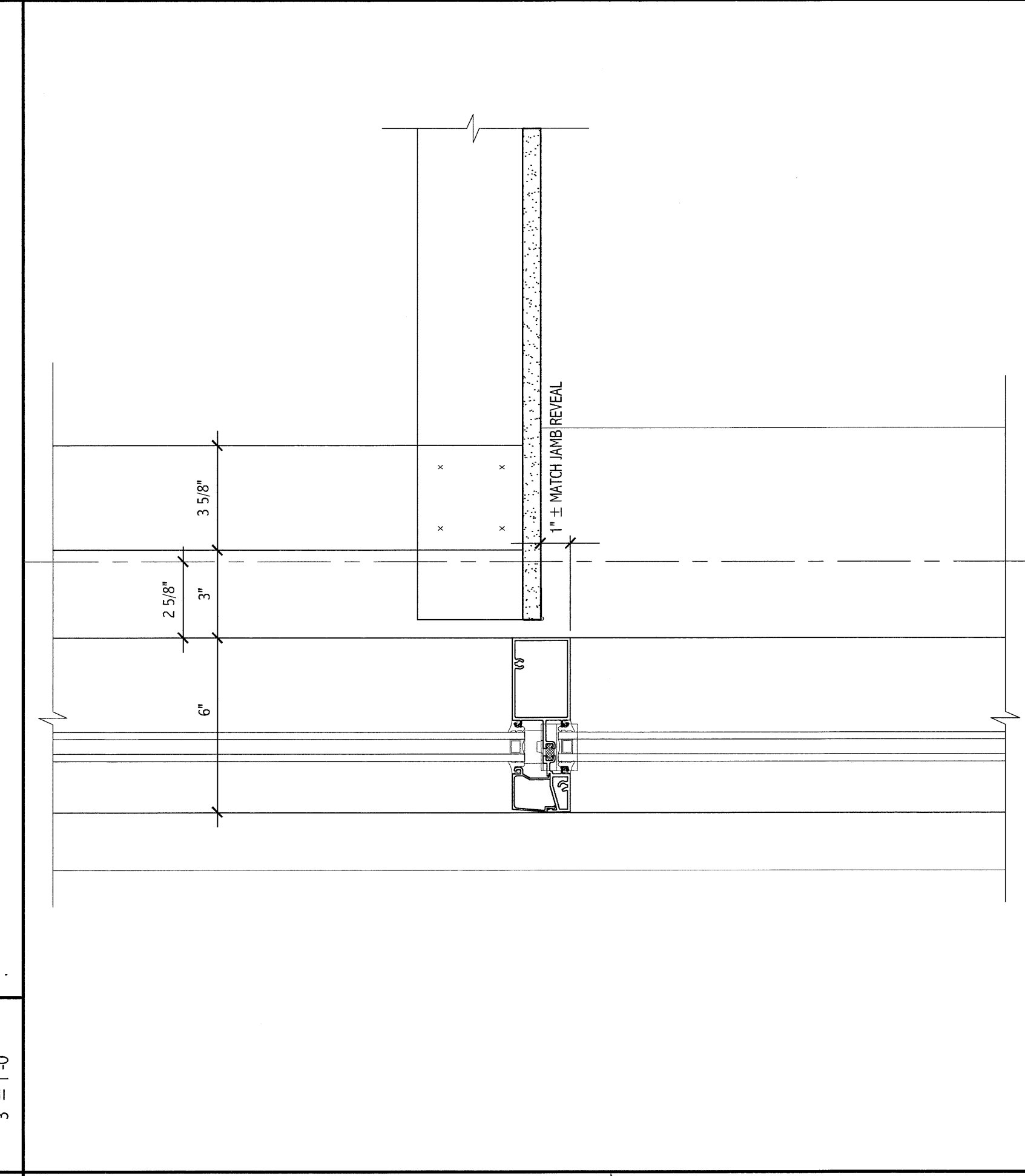
M1 SECTION DETAIL
 3" = 1'-0"



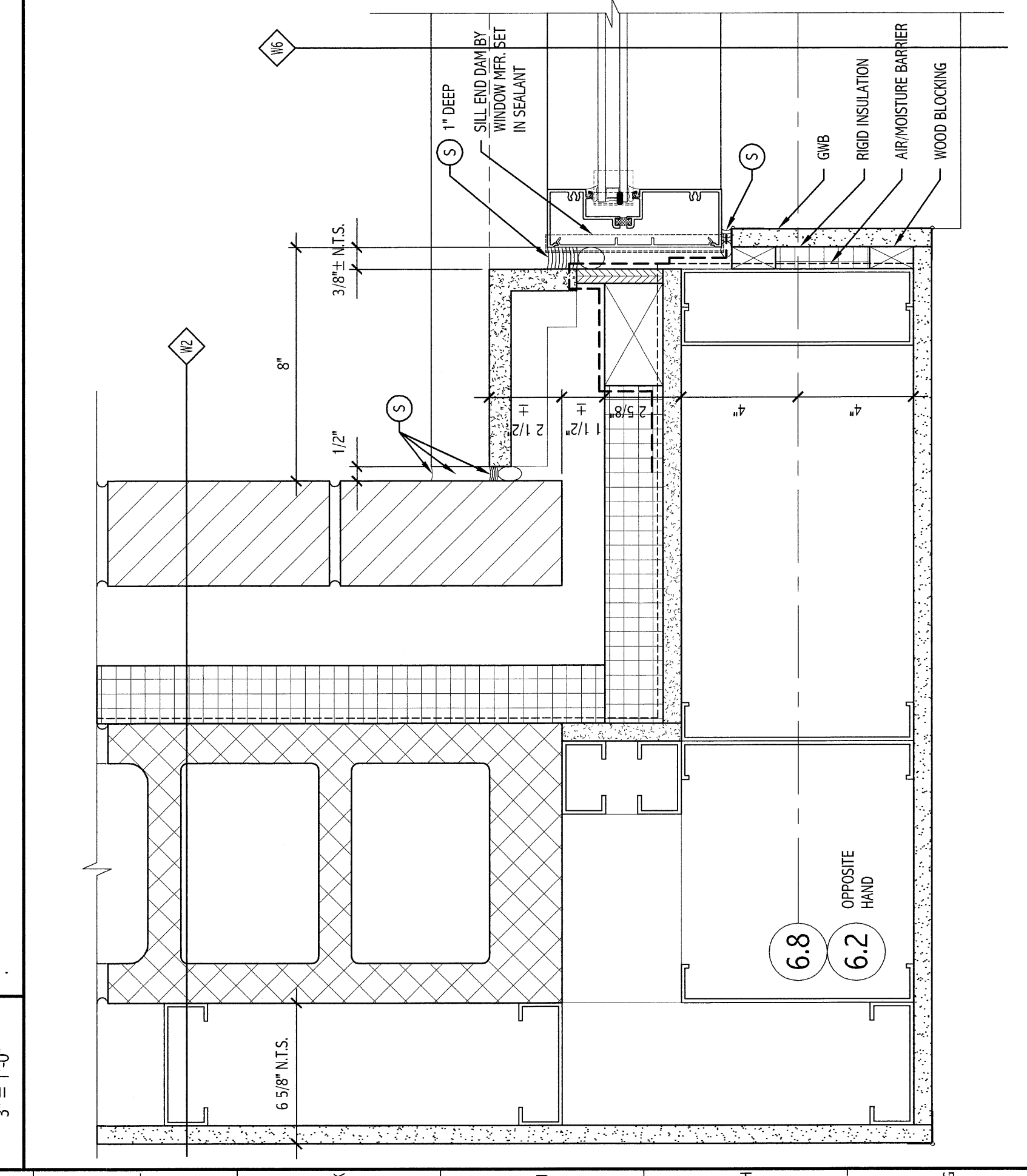
F16 SECTION DETAIL
 3" = 1'-0"



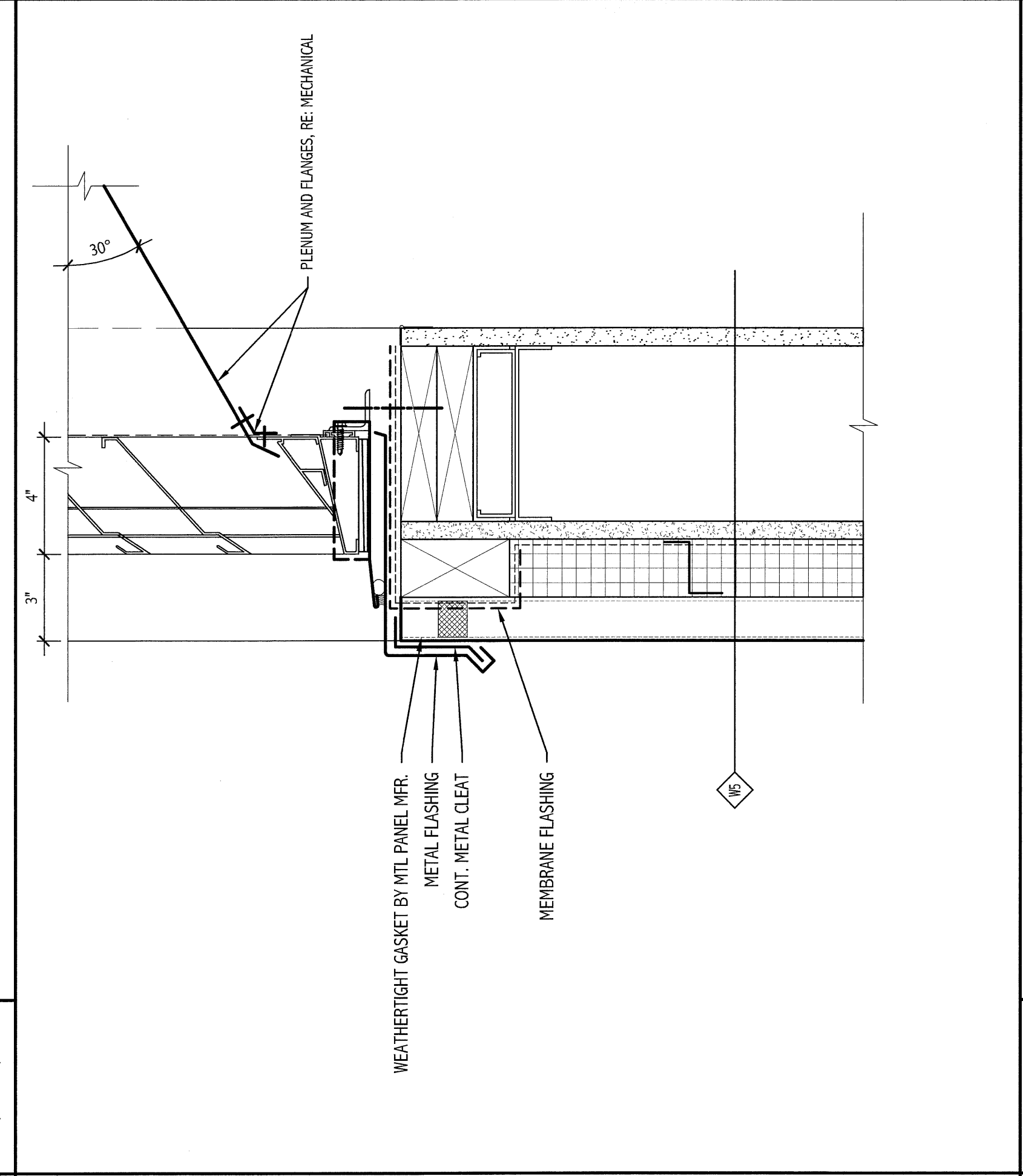
F11 SECTION DETAIL
 3" = 1'-0"



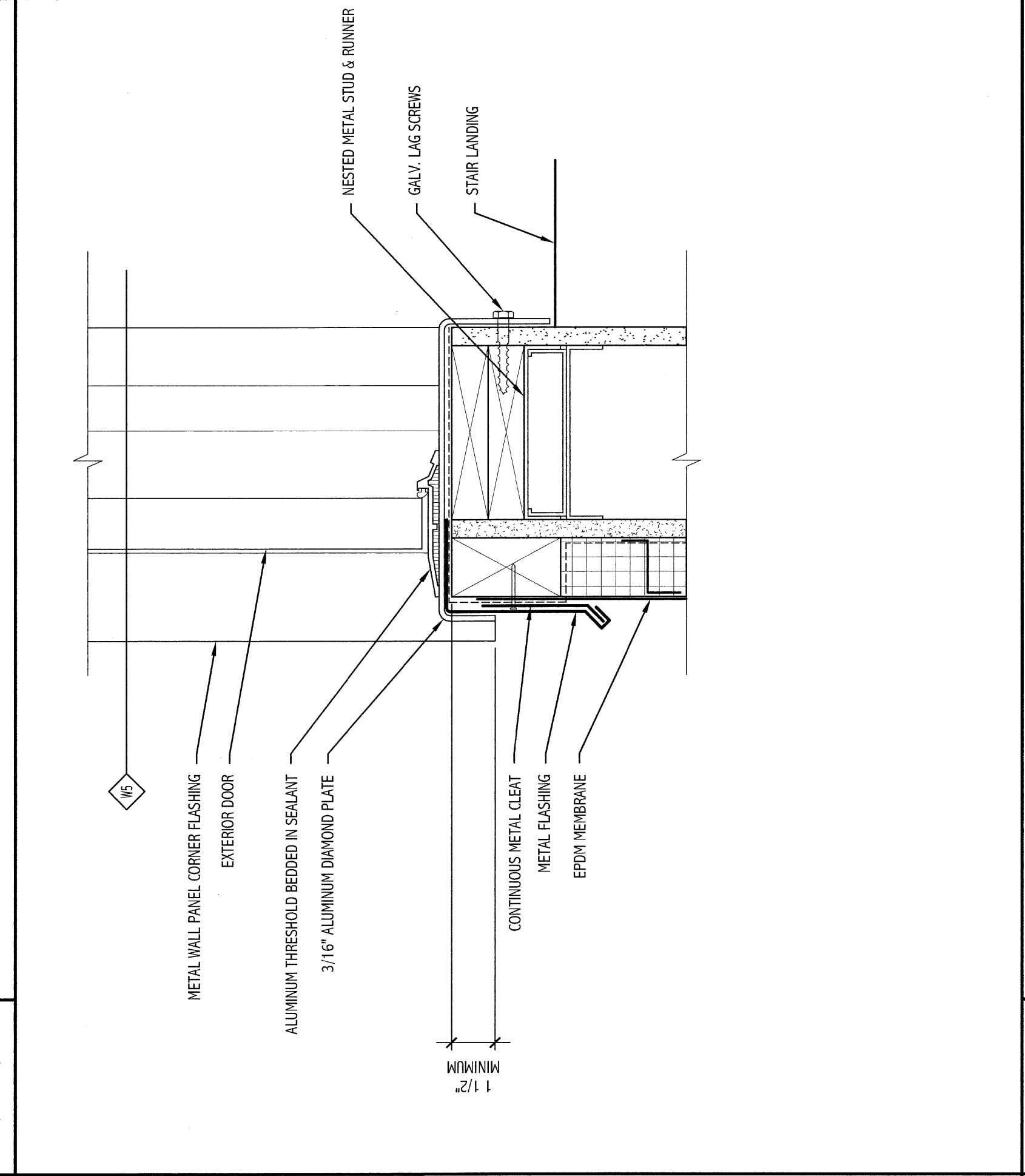
F6 SECTION DETAIL
 3" = 1'-0"



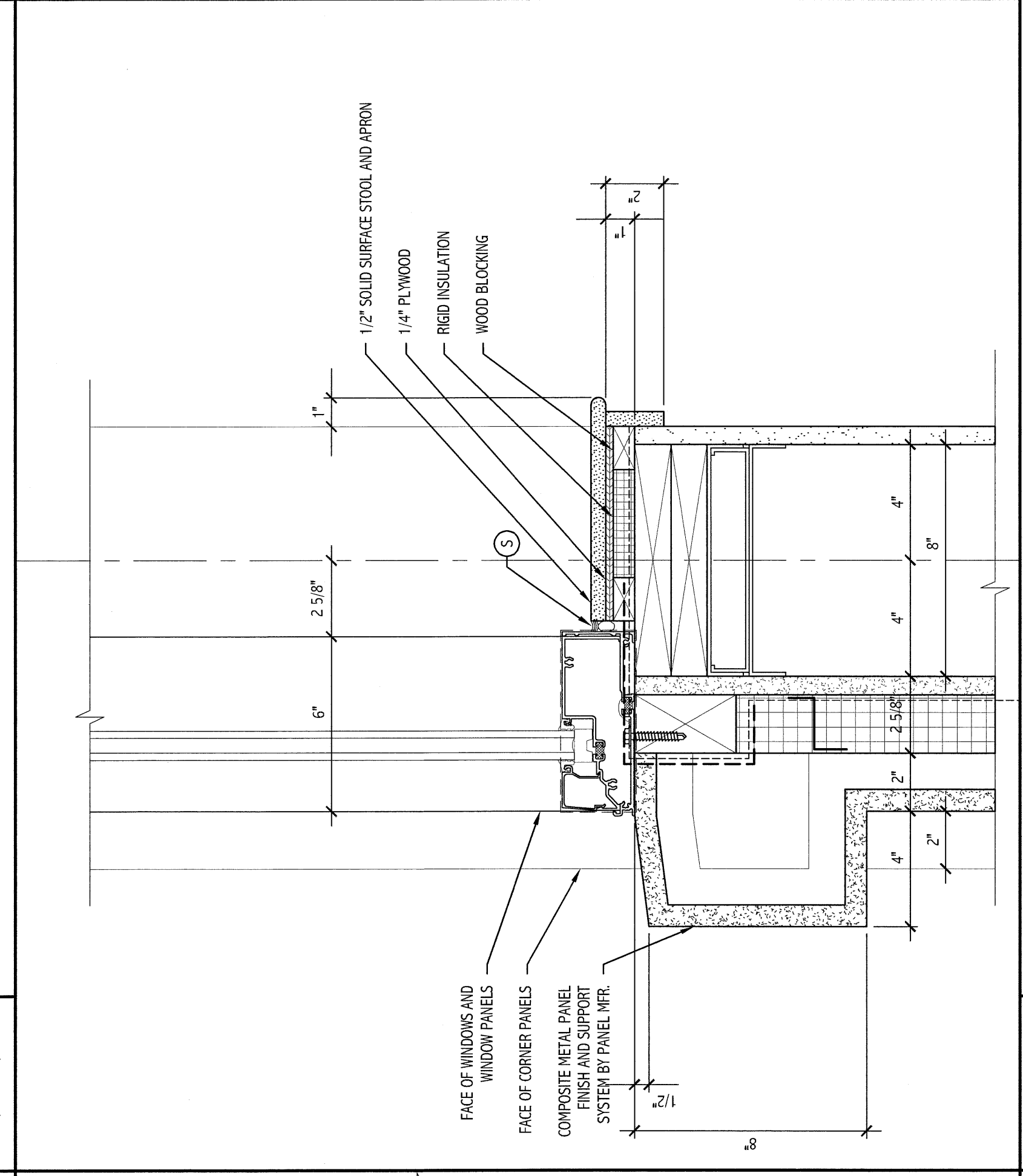
F1 SECTION DETAIL
 3" = 1'-0"



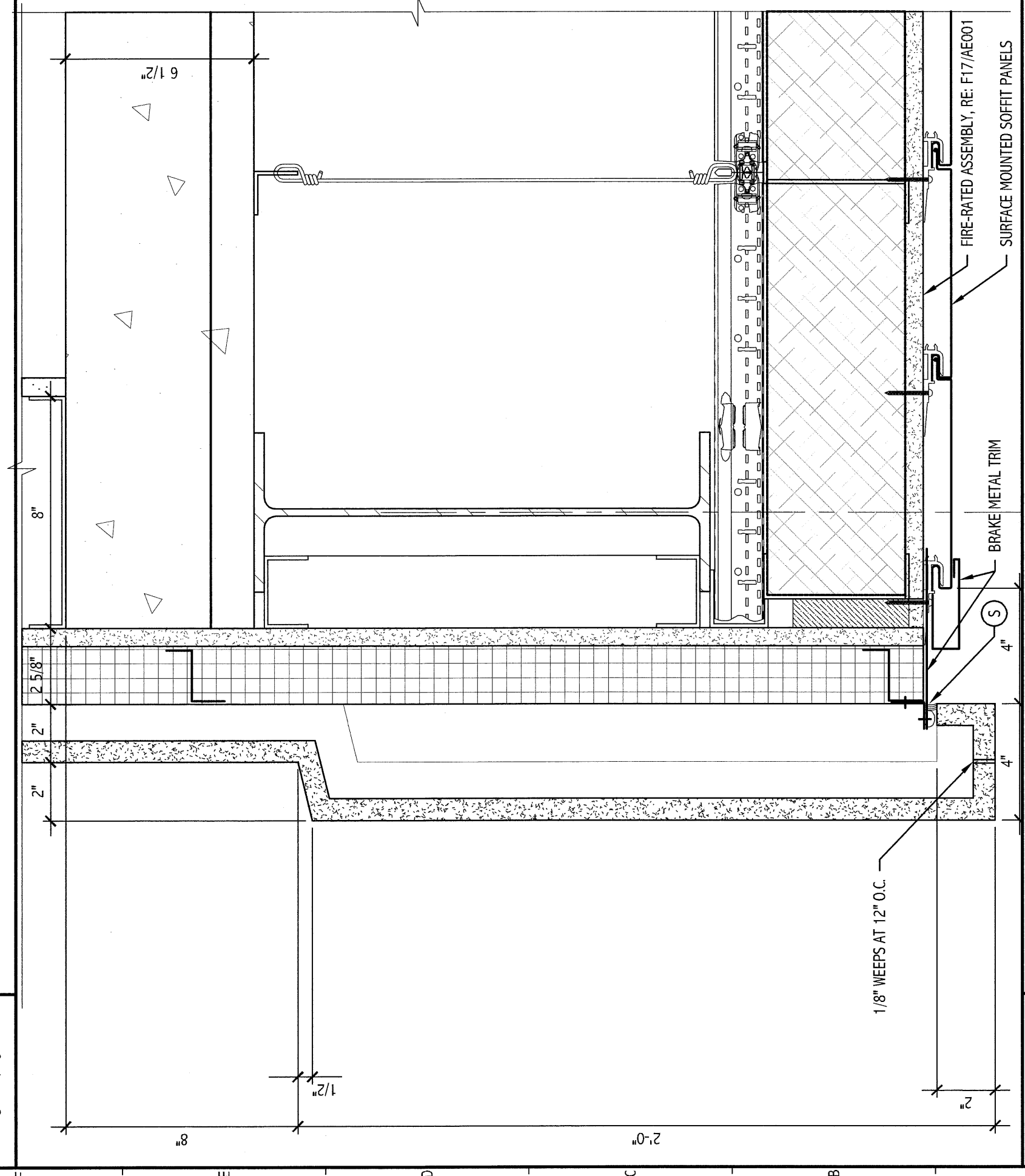
A16 SECTION DETAIL
 3" = 1'-0"



A11 SECTION DETAIL
 3" = 1'-0"



A6 SECTION DETAIL
 3" = 1'-0"



A1 SECTION DETAIL
 3" = 1'-0"

PROJECT NAME	ISSUED FOR G.M.P. & PERMITTING 4-3-09
DESCRIPTION	
DATE	
CURRENT ISSUE STATUS:	
PROJECT NUMBER	
JOB NUMBER	
DATE OF RECORD	
SMRI CODE FILE	
PROJECT NO.	
AS NOTED	
DATE	
SUB	
GRAPHIC SCALE	0"
TOTAL	
SUB	
SHEET NO.	AE634
DATE	08/13

SMRI
 ARCHITECTURE
 ENGINEERING
 PLANNING
 INTERIOR DESIGN
 COMMISSIONING
 144 Ave. Stone Pk. Bldg. 410
 Portland, Maine 04108
 Tel: (207) 772-3946
 Fax: (207) 772-3947
 www.smri.com

MARTIN'S POINT HEALTH CARE
 MEDICAL OFFICE BUILDING
 PORTLAND, MAINE
 EXTERIOR DOOR & WINDOW
 SECTIONS AND DETAILS

SCALE: AS NOTED DATE: _____
 PROJECT NUMBER: _____ JOB NUMBER: _____
 DATE OF RECORD: _____ SMRI CODE FILE: _____
 PROJECT NO.: _____ SHEET NO.: AE634

PROGRESS PRINT