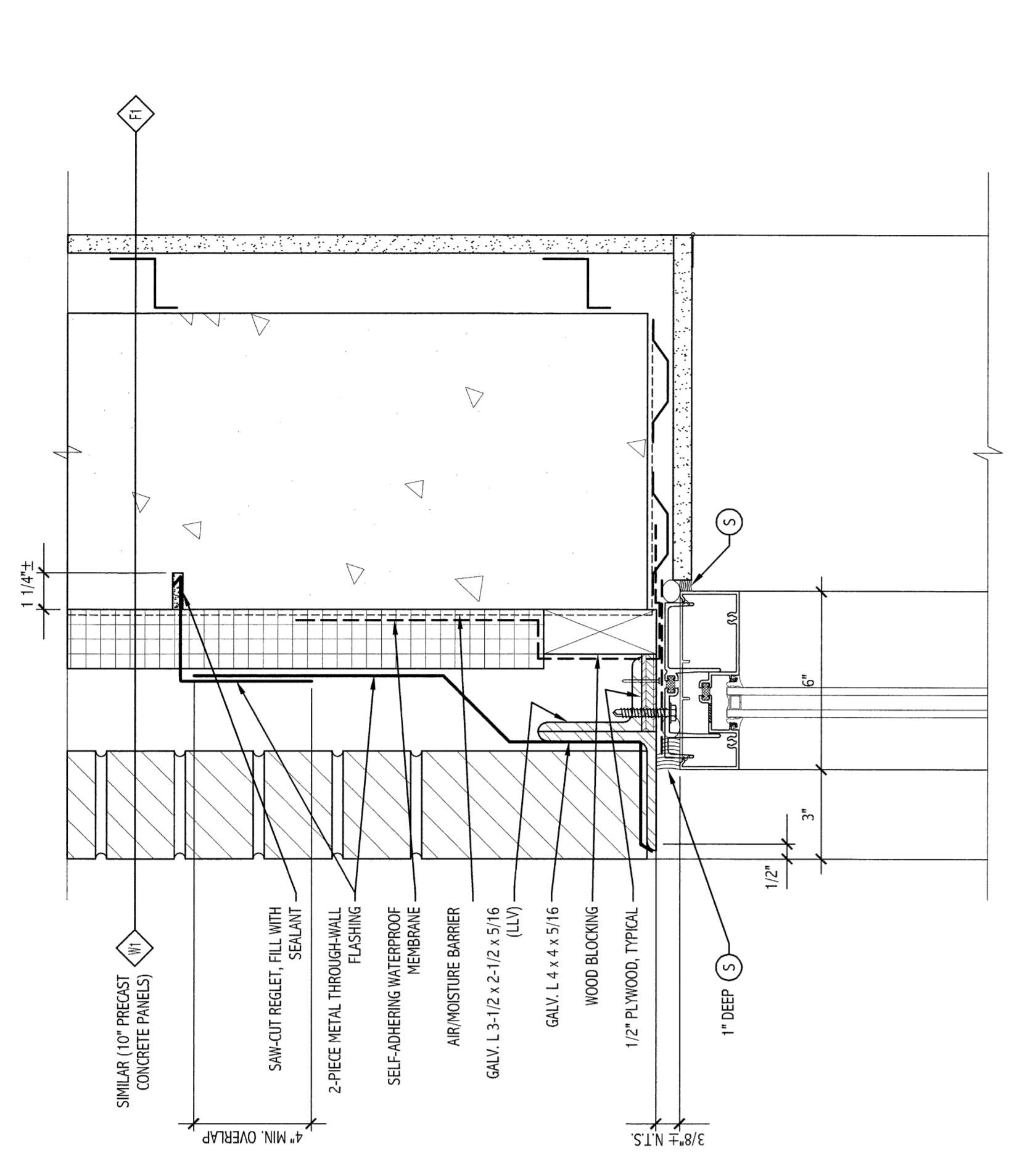
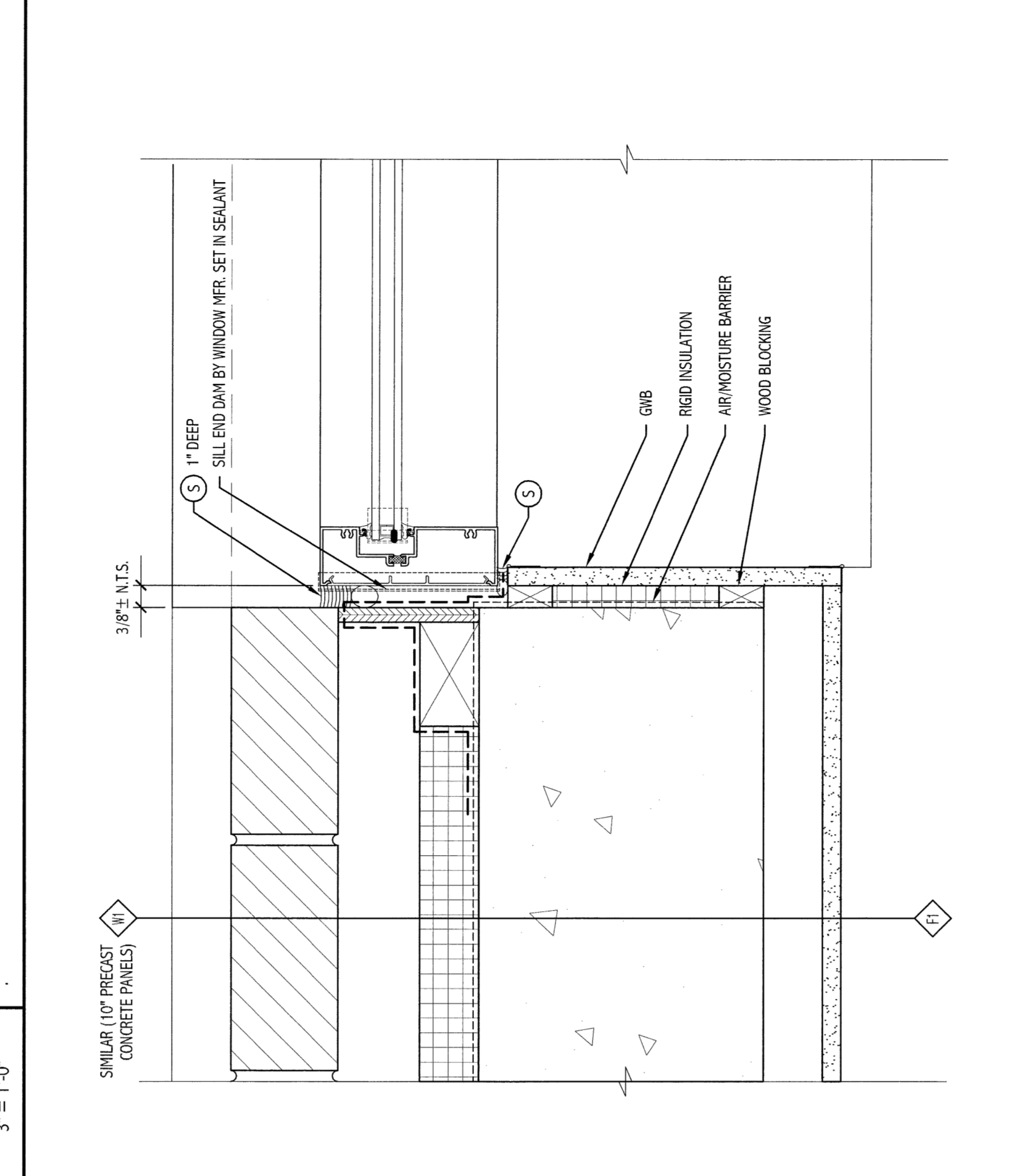


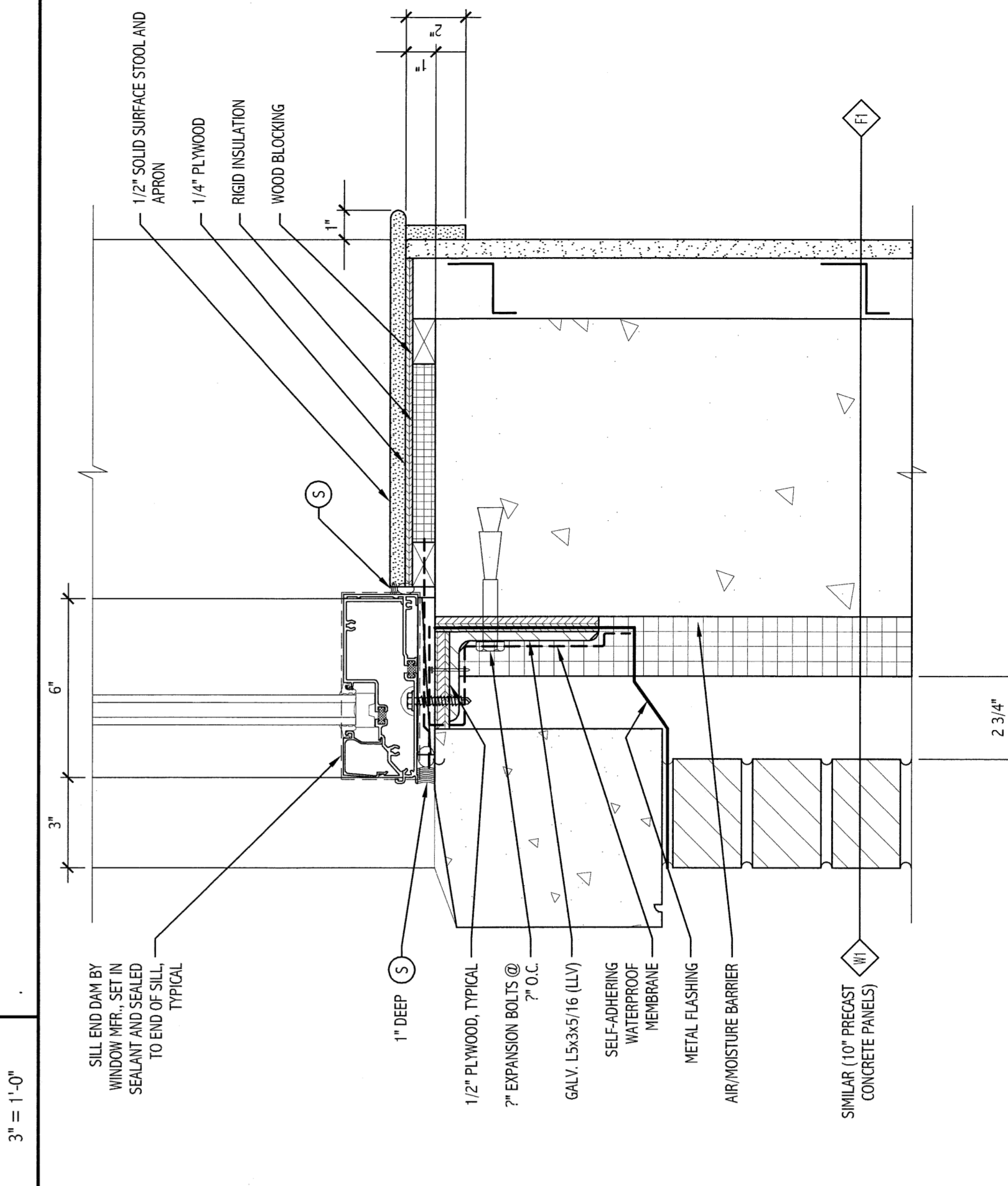
GENERAL NOTES:
1. SEE GOOD FOR PROJECT GENERAL NOTES.



M16 SECTION DETAIL
3" = 1'-0"



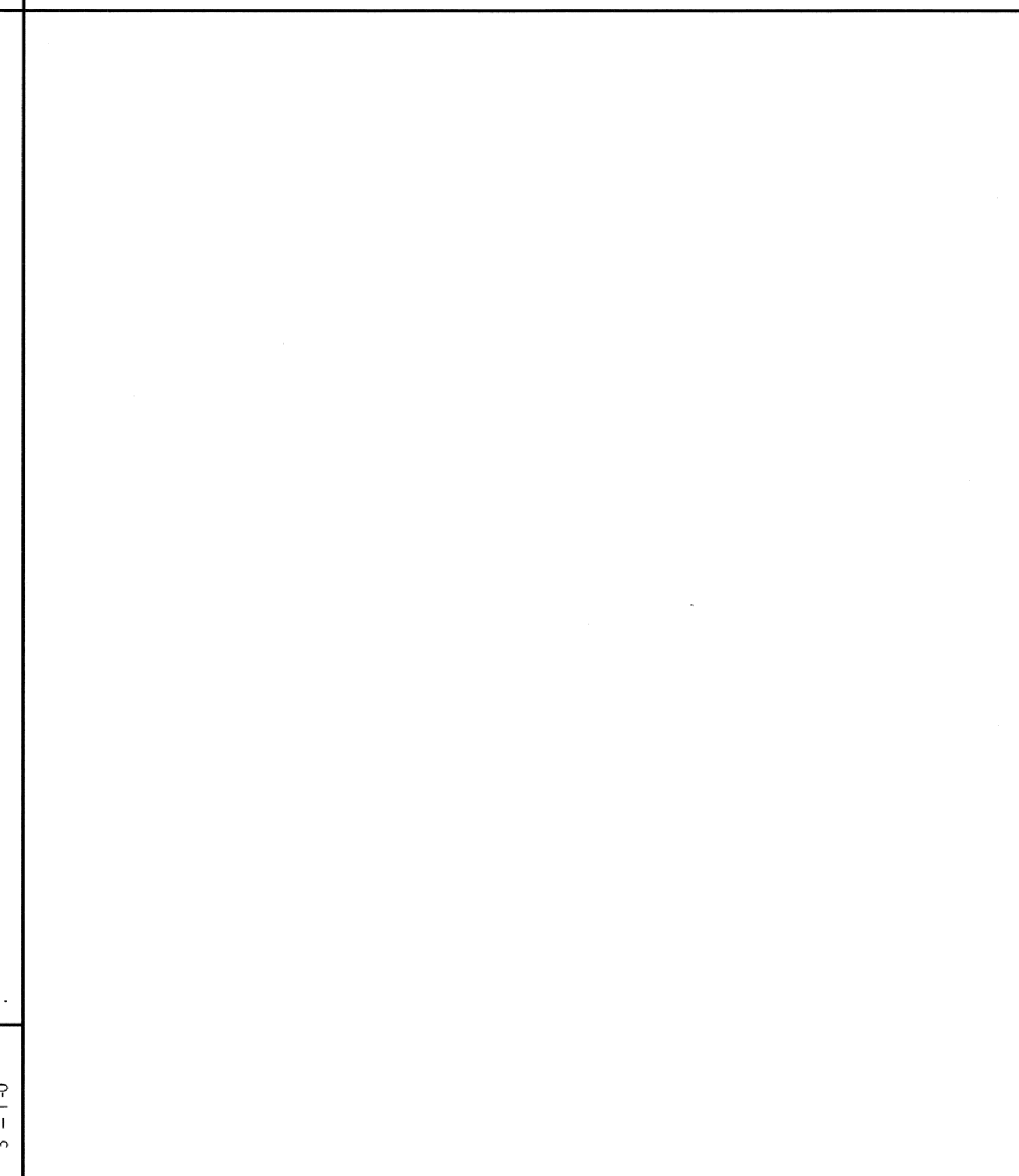
F16
3" = 1'-0"



A16
3" = 1'-0"



M11 SECTION DETAIL
3" = 1'-0"



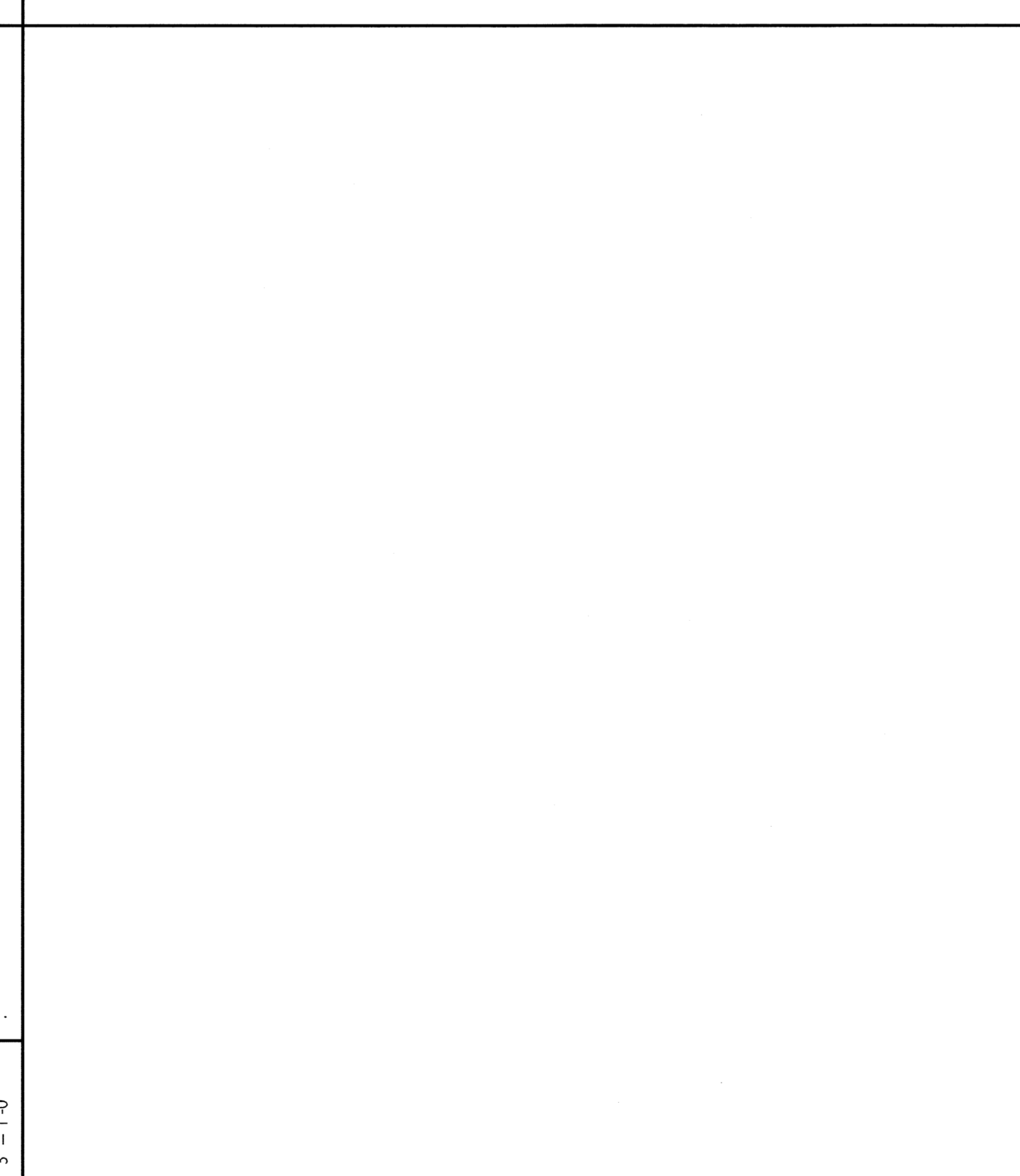
F11
3" = 1'-0"



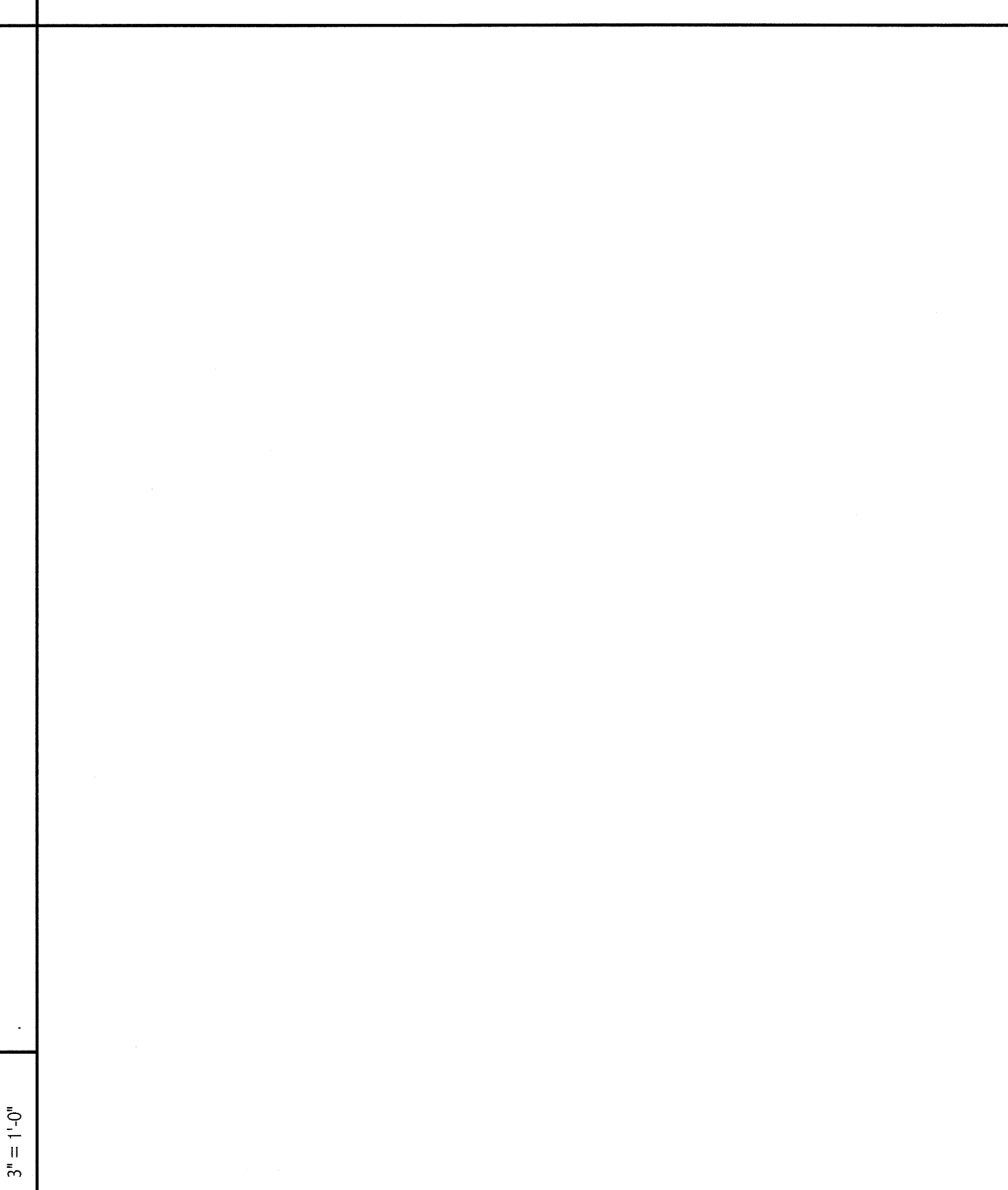
A11
3" = 1'-0"



M6 SECTION DETAIL
3" = 1'-0"



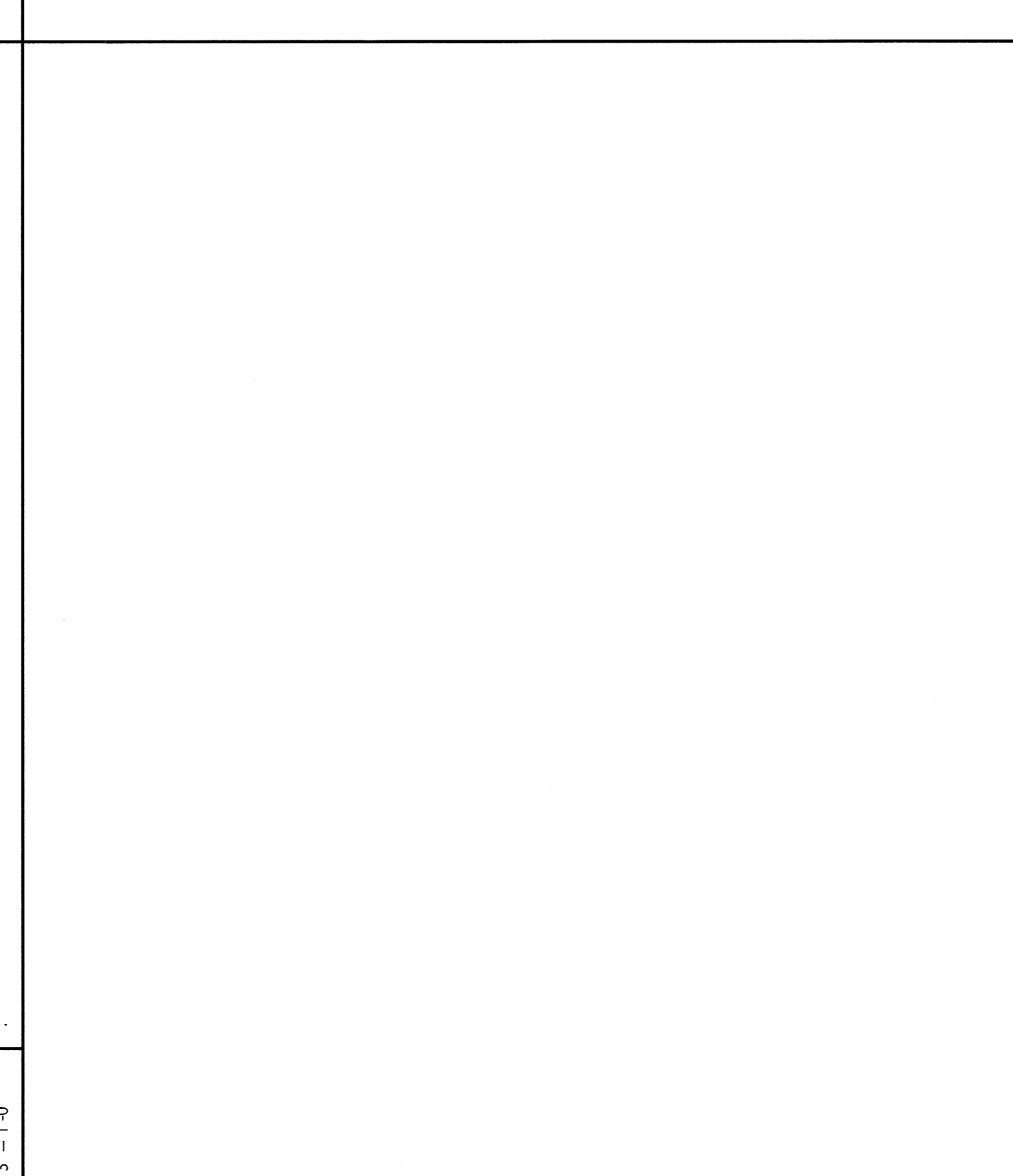
F6
3" = 1'-0"



A6
3" = 1'-0"



M1 SECTION DETAIL
3" = 1'-0"



F1
3" = 1'-0"



A1
3" = 1'-0"

ISSUED FOR G.M.P. & PERMITTING
4-3-09

PROJECT: SMRI
ARCHITECTURE: SMRI
ENGINEERING: SMRI
PLANNING: SMRI
INTERIOR DESIGN: SMRI
COMMISSIONING: SMRI

141 First Street, Suite 618
Portland, Maine 04101
Tel: (207) 775-3846
Fax: (207) 775-3070
www.smri.com

SMRI
MARTIN'S POINT HEALTH CARE
MEDICAL OFFICE BUILDING
PORTLAND, MAINE

EXTERIOR DOOR & WINDOW
SECTIONS AND DETAILS

SHEET TITLE: EXTERIOR DOOR & WINDOW SECTIONS AND DETAILS
SCALE: AS NOTED
DATE: 04/03/09
PROJECT NUMBER: 44633-88139
JOB CONTROL NUMBER: 08129
DATE OF RECORD: 08/13/09
SHEET NO.: 08129
SHEET TOTAL: 46

PROJECT NO.: 44633-88139
SHEET NO.: 08129
SHEET TOTAL: 46

AE633

PROGRESS PRINT