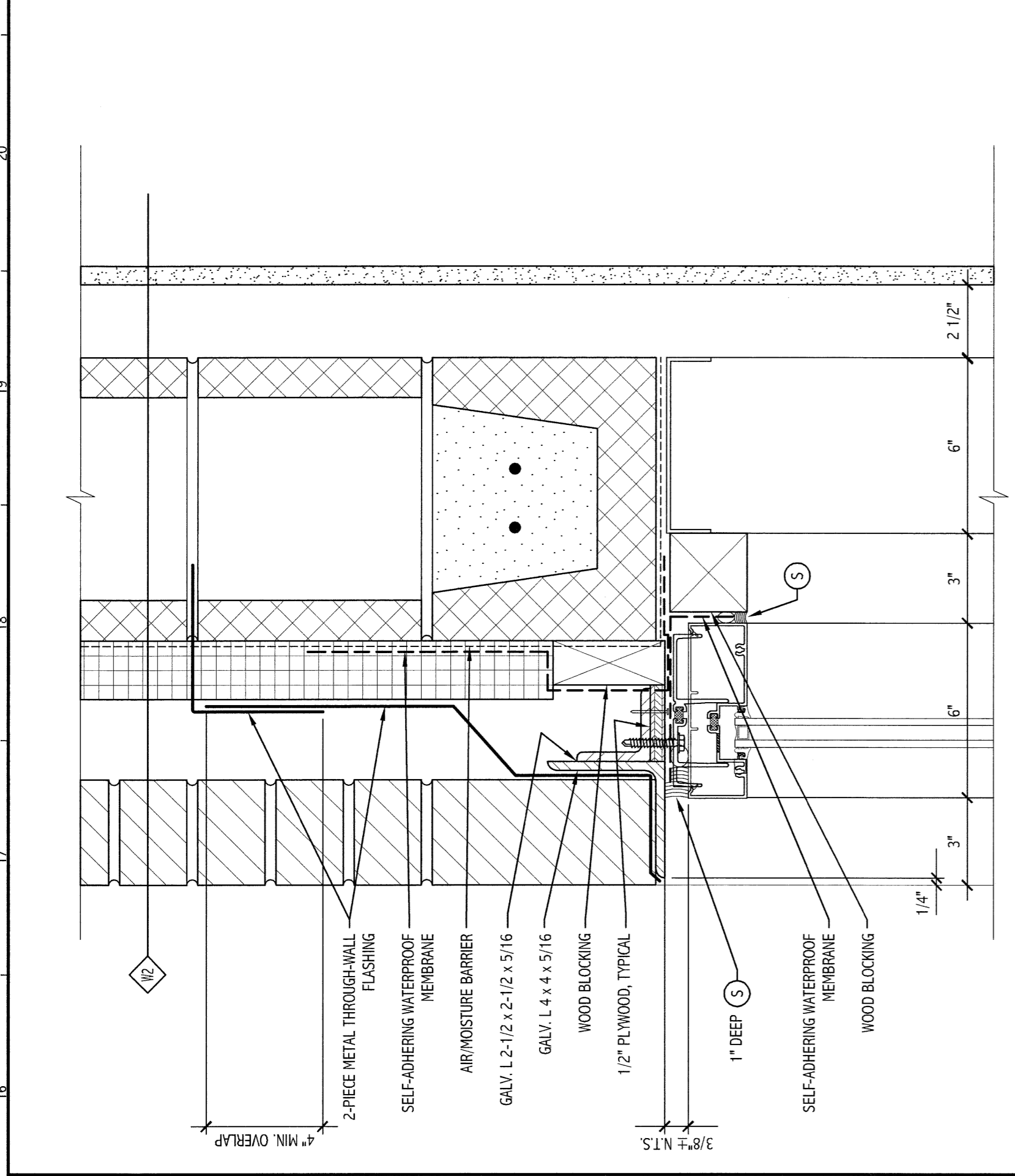
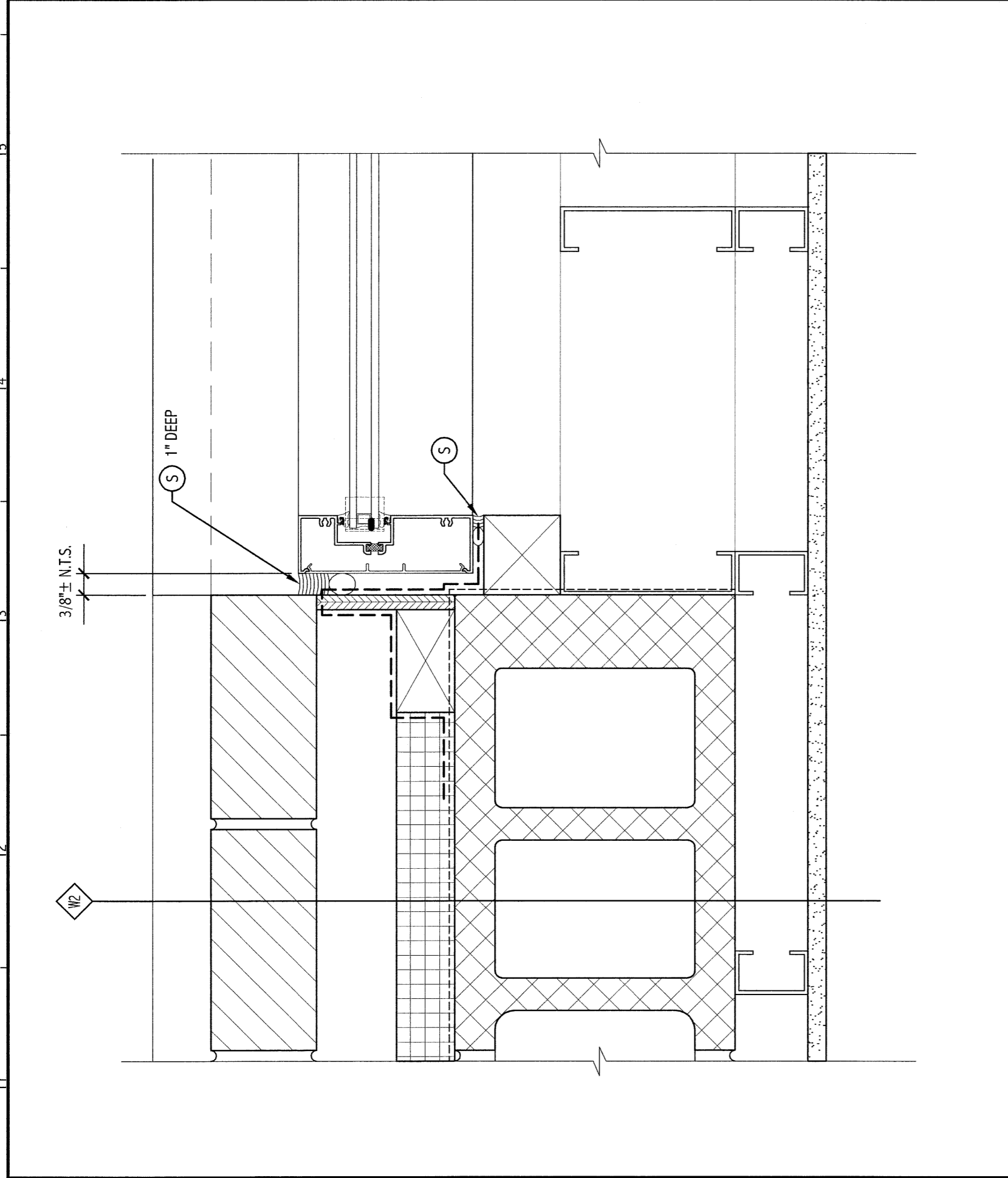


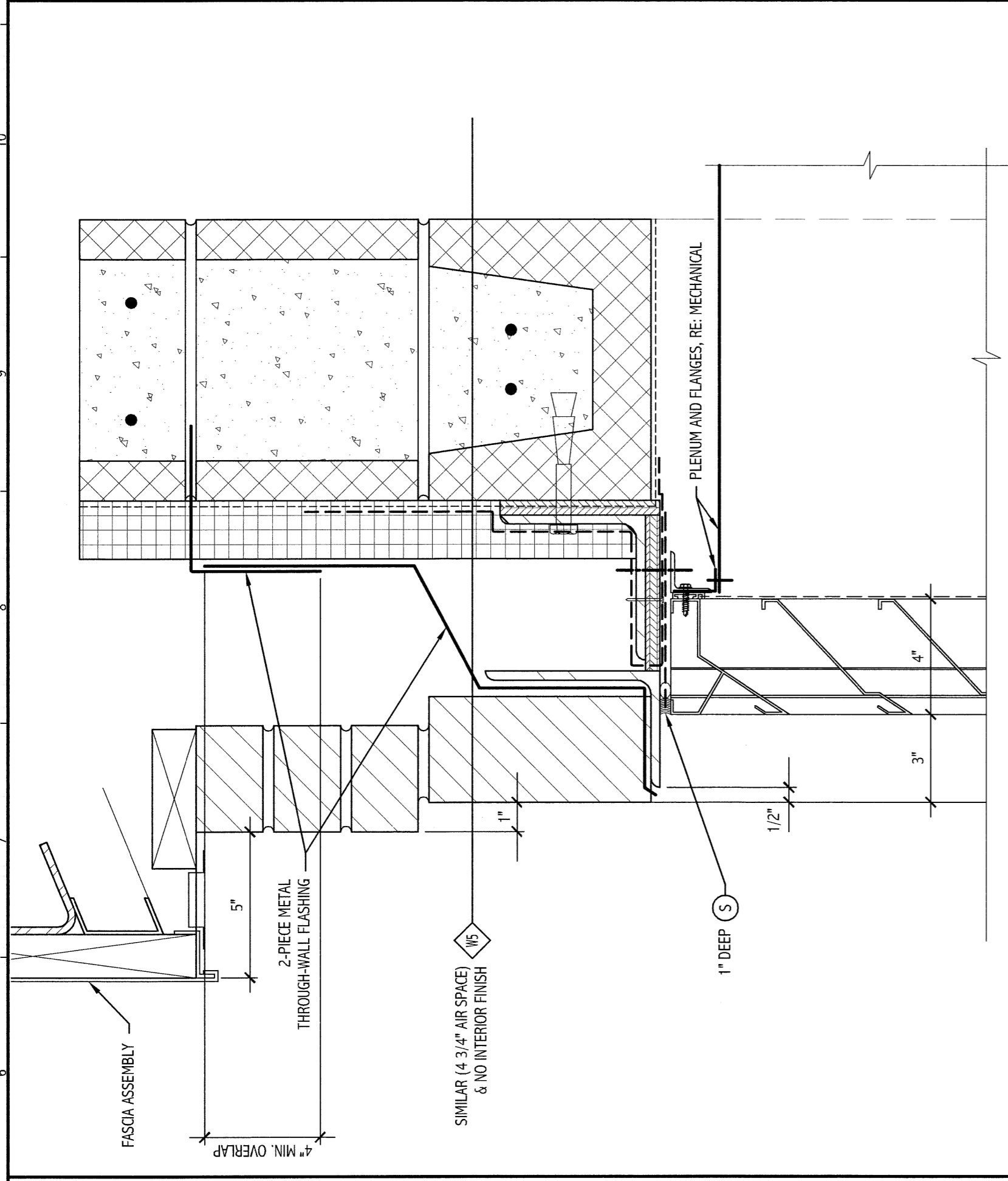
**GENERAL NOTES:**  
1. SEE 0001 FOR PROJECT GENERAL NOTES.



**M16 SECTION DETAIL**  
3" = 1'-0"



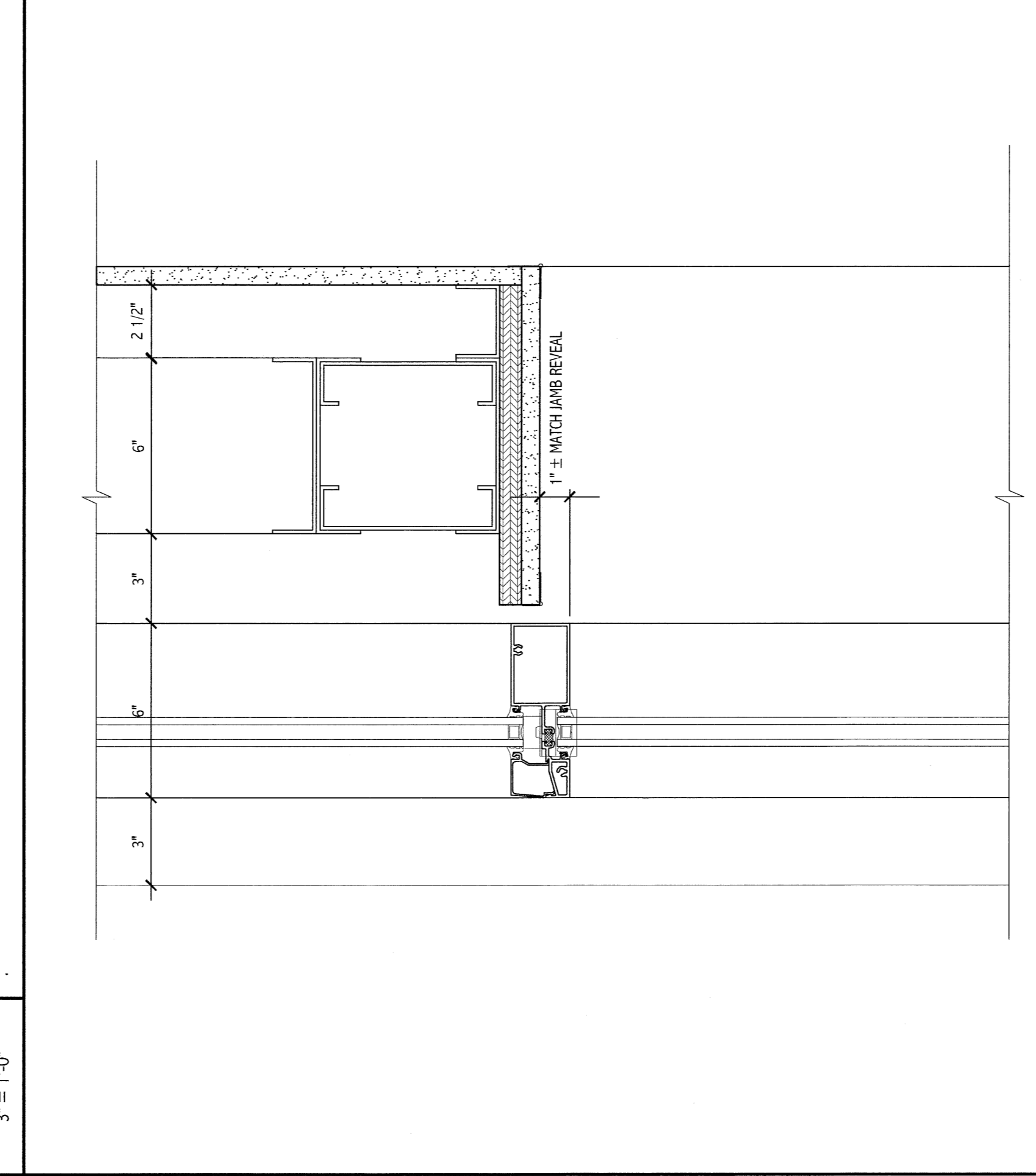
**M11 SECTION DETAIL**  
3" = 1'-0"



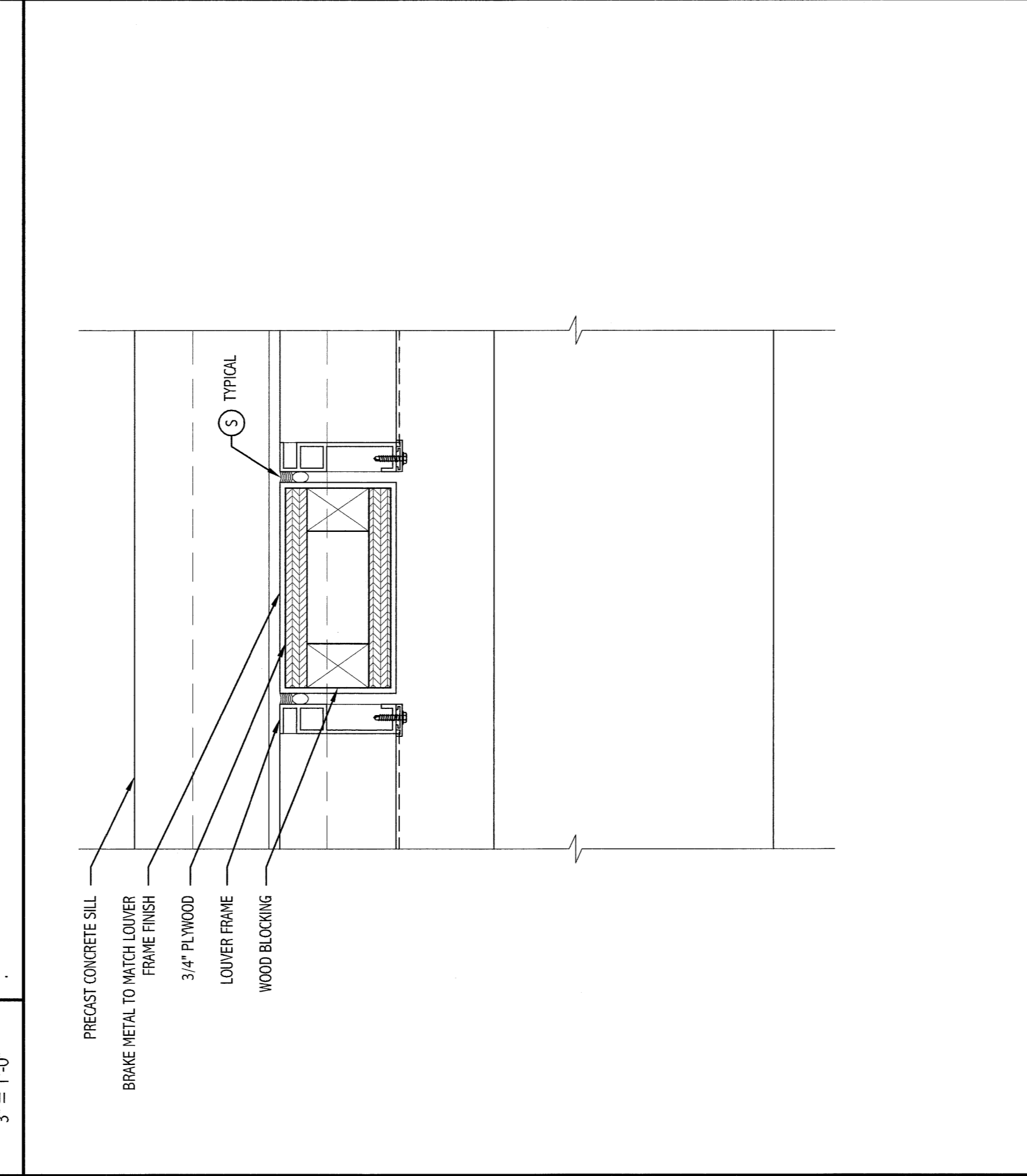
**M6 SECTION DETAIL**  
3" = 1'-0"



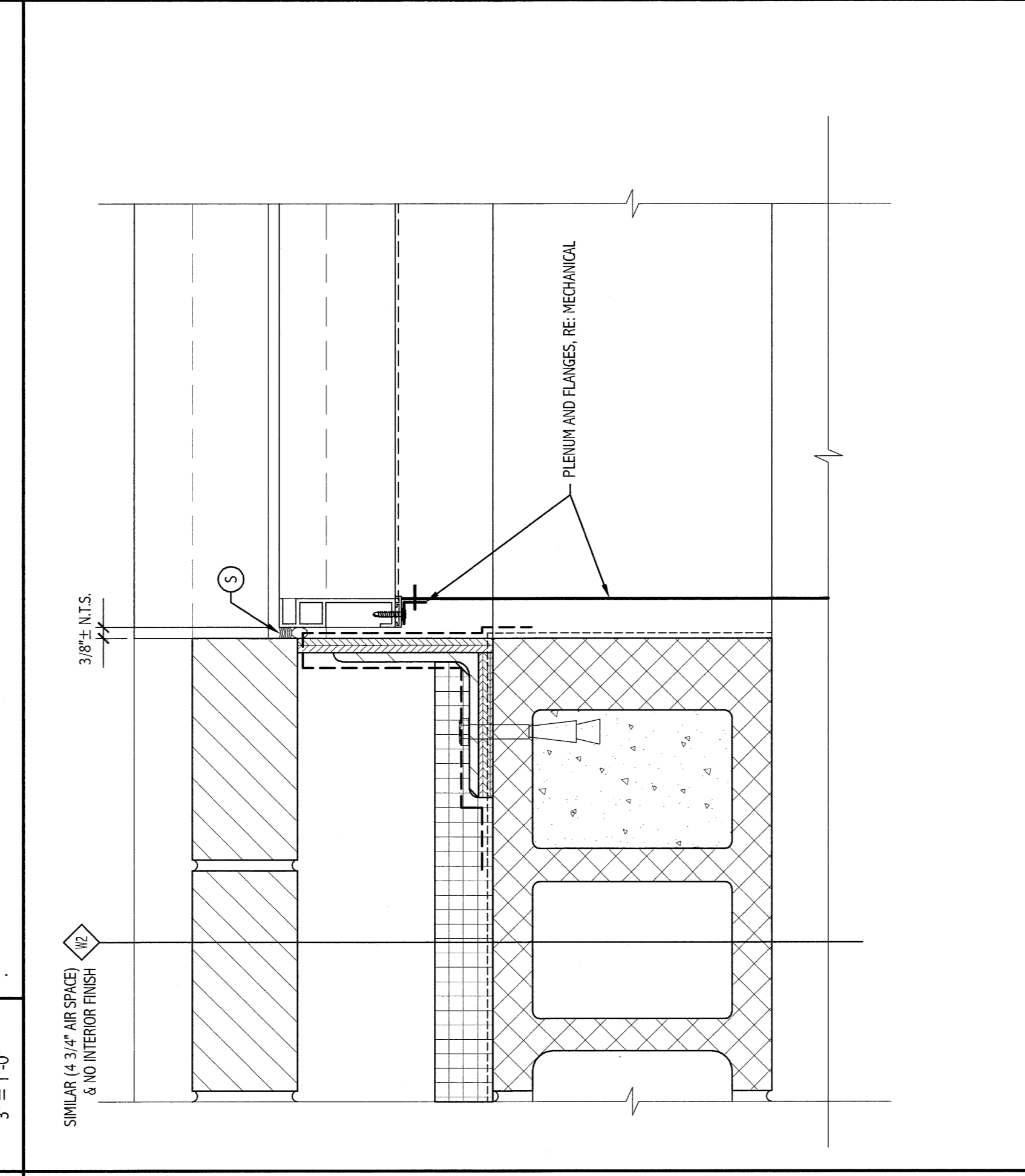
**M1 SECTION DETAIL**  
3" = 1'-0"



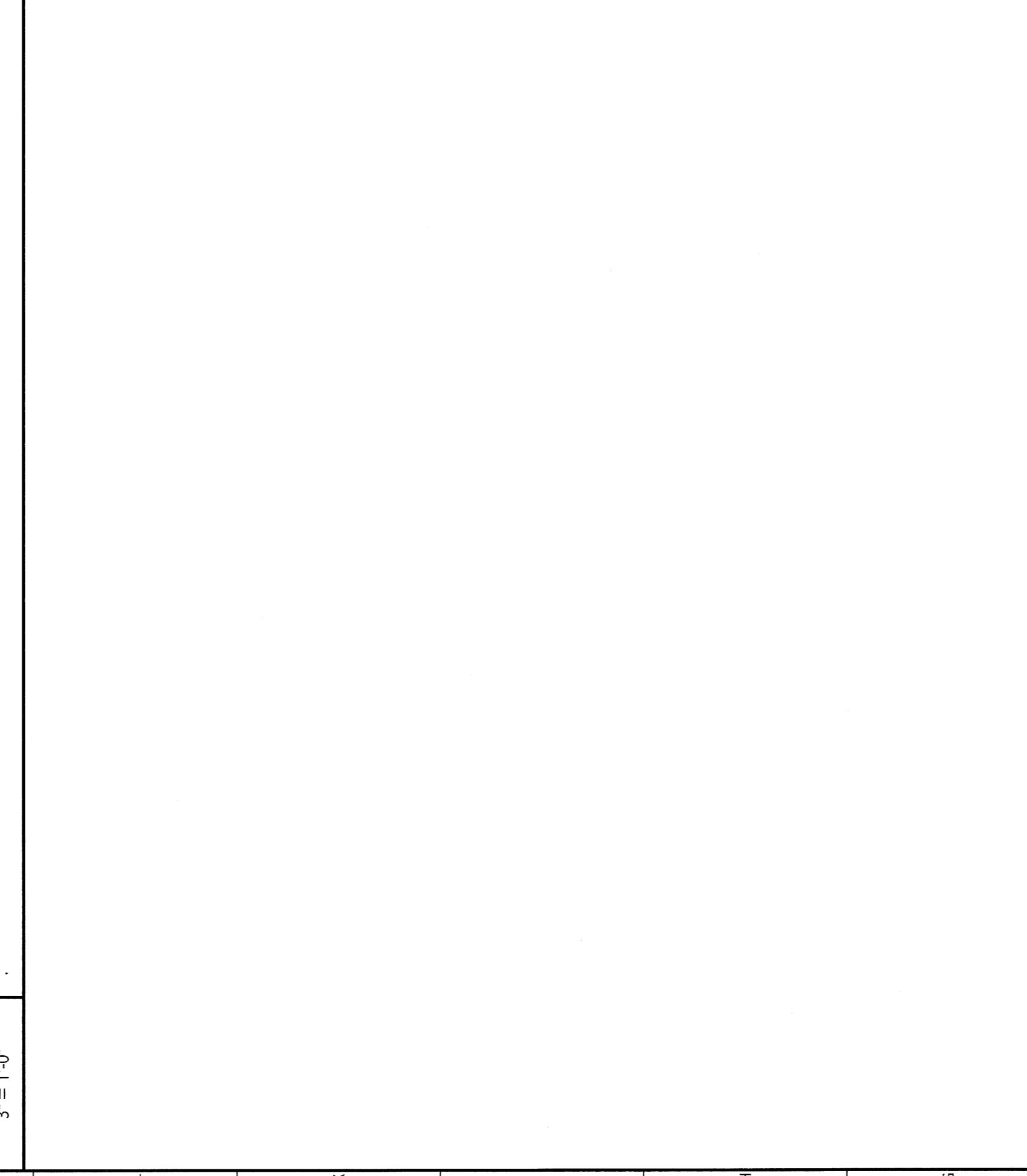
**F16**  
3" = 1'-0"



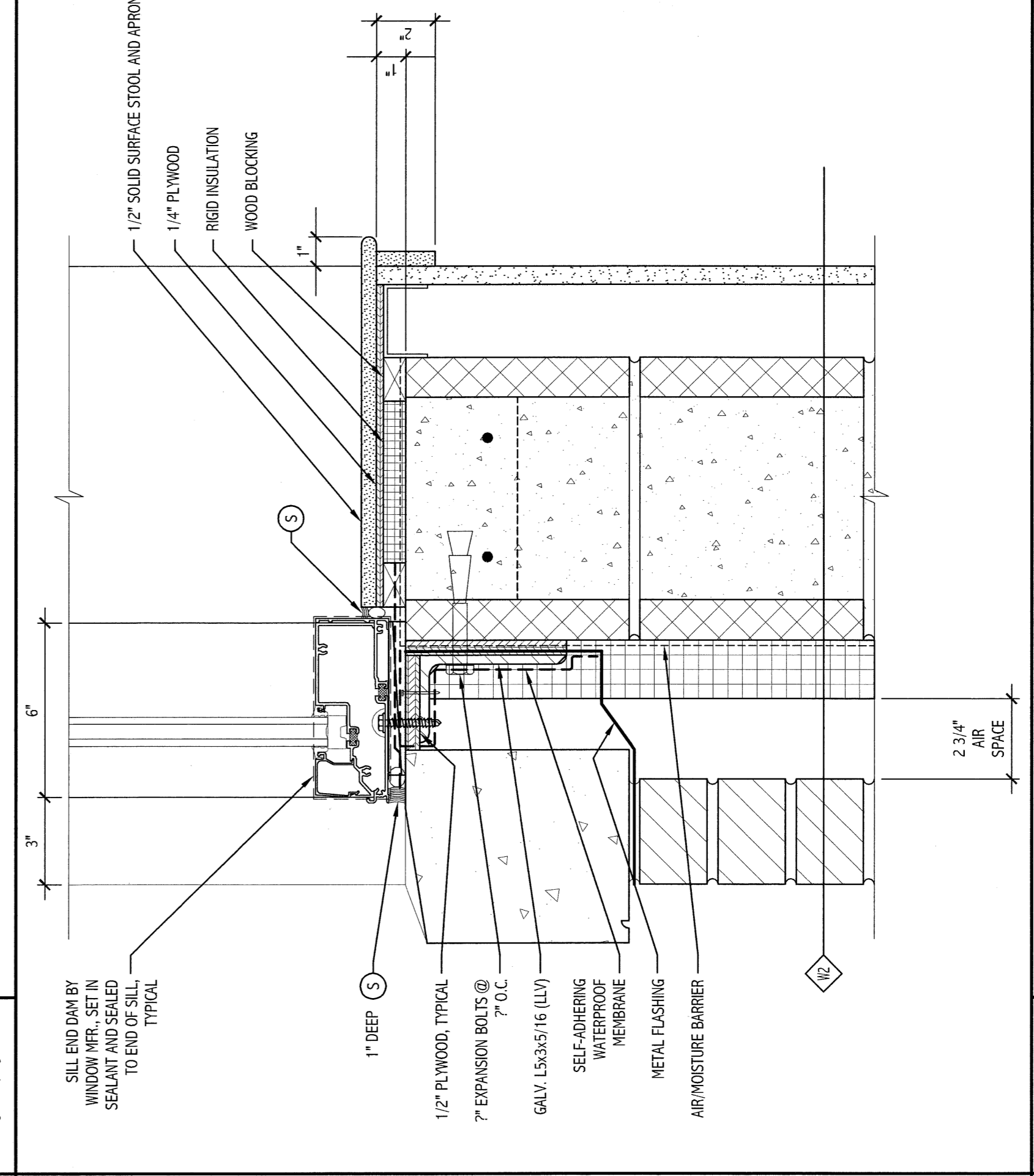
**F11**  
3" = 1'-0"



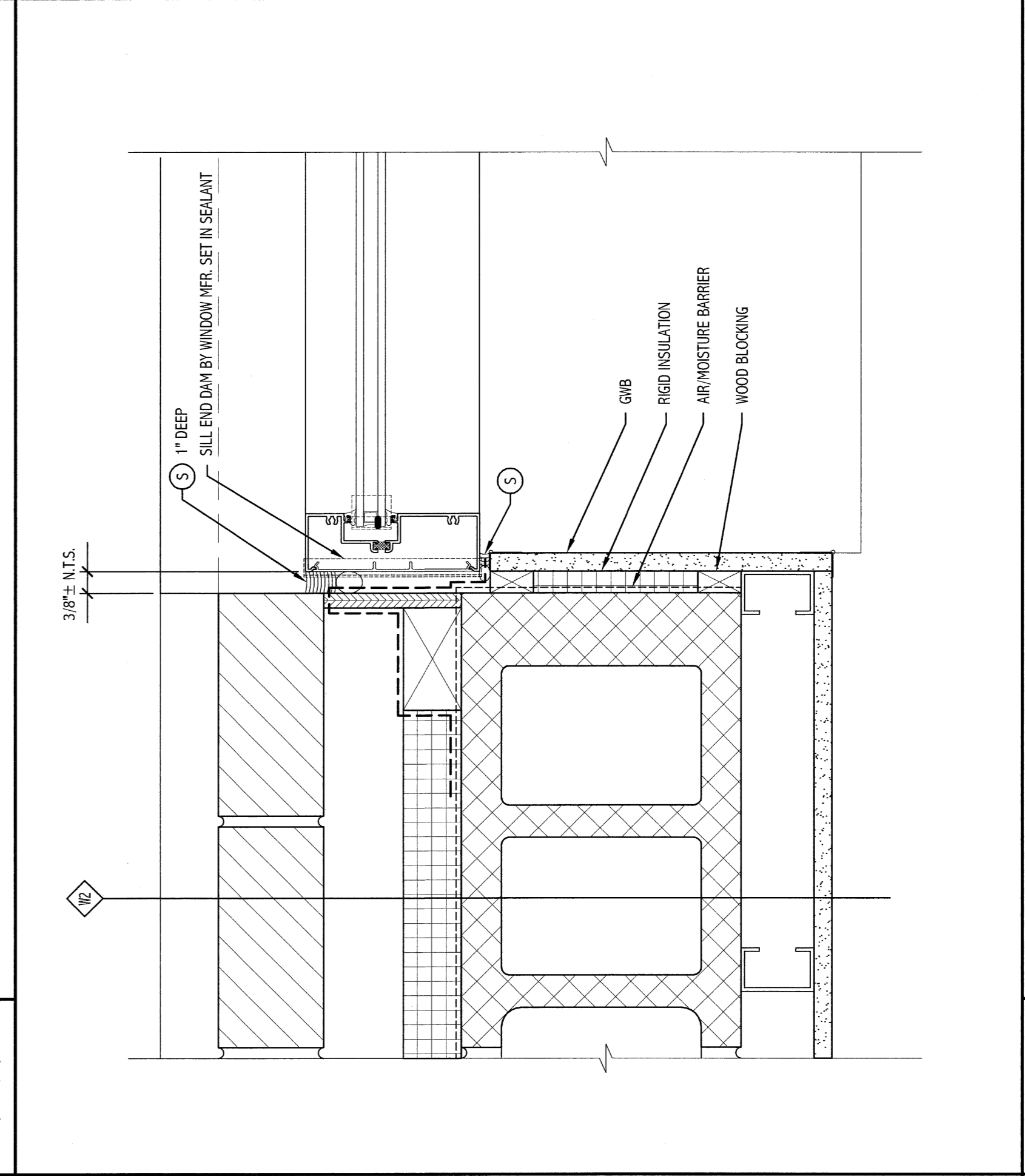
**F6**  
3" = 1'-0"



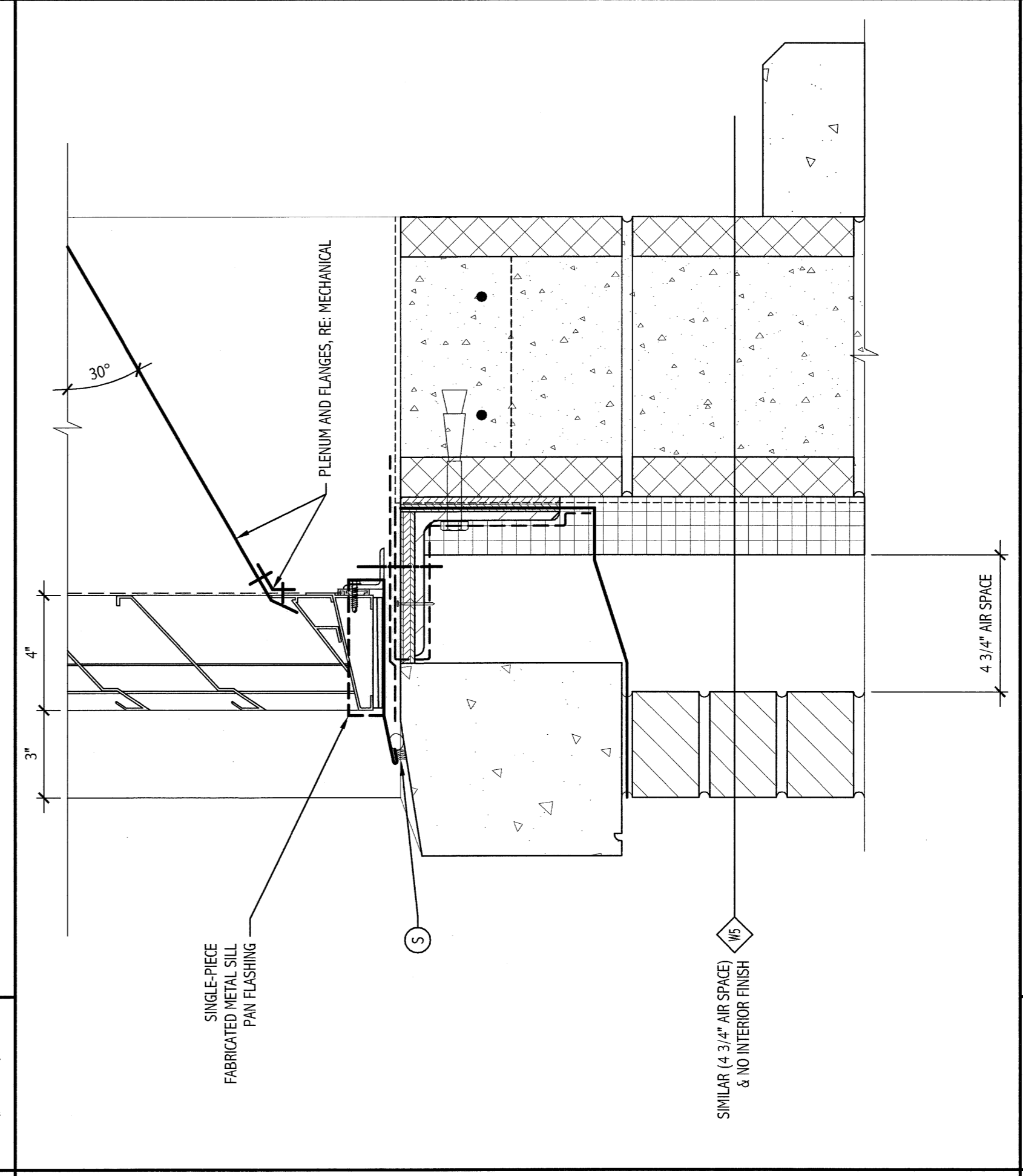
**A1**  
3" = 1'-0"



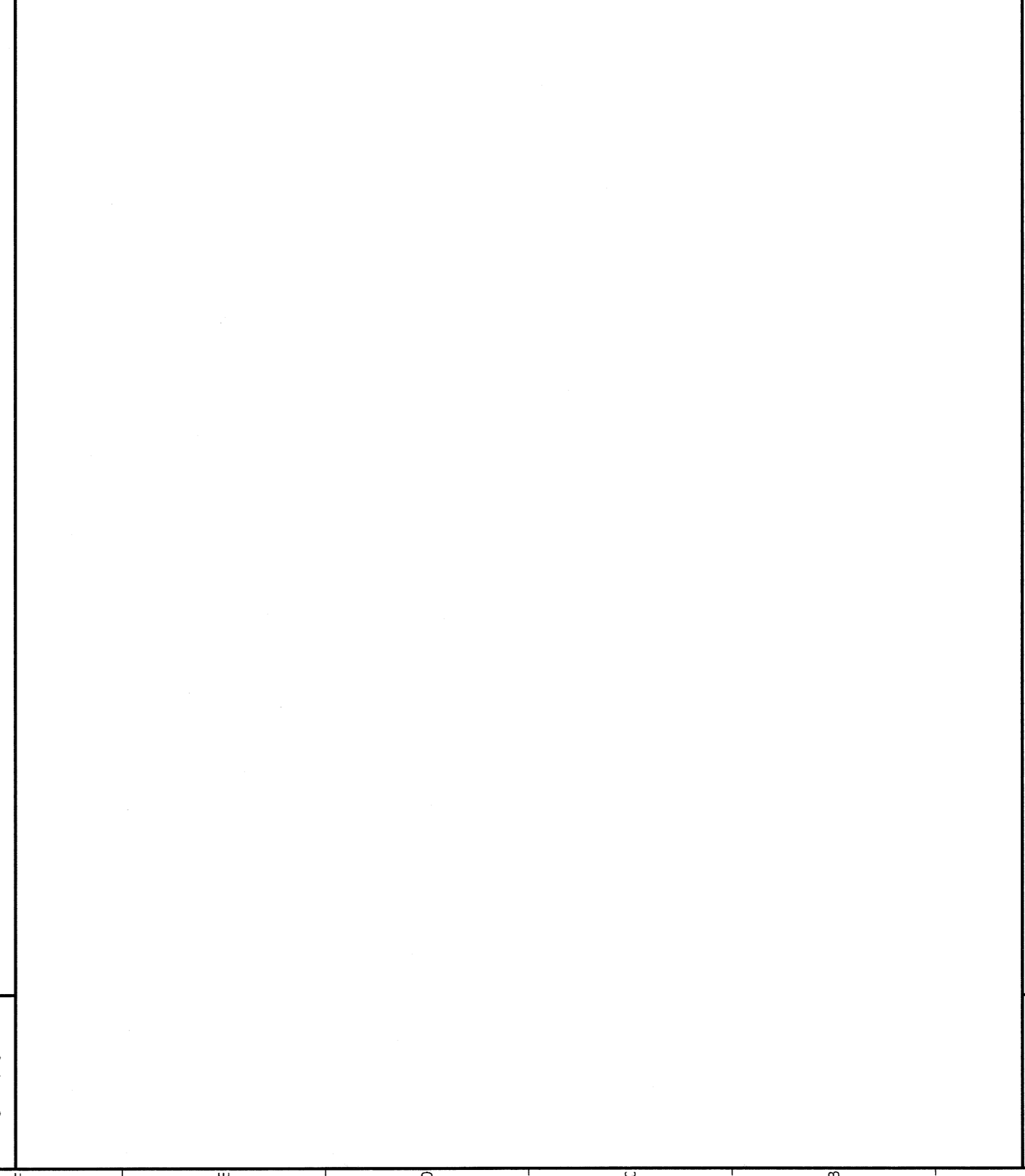
**A16**  
3" = 1'-0"



**A11**  
3" = 1'-0"



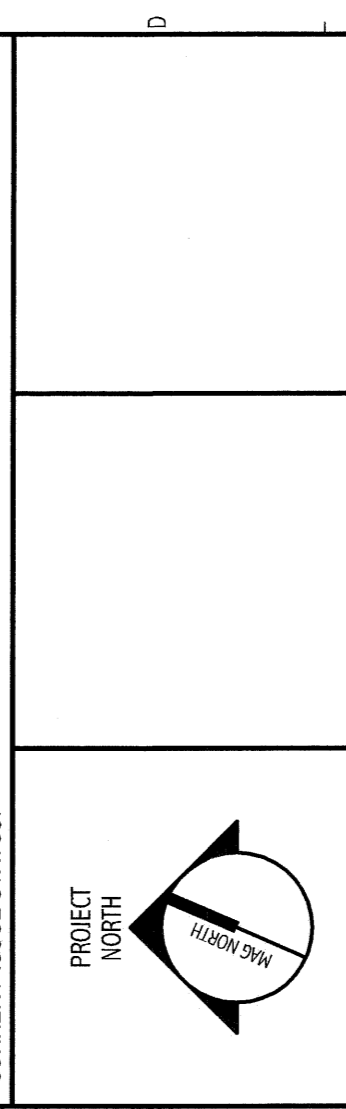
**A6**  
3" = 1'-0"



**A1**  
3" = 1'-0"

REV#	DESCRIPTION	DATE

**ISSUED FOR G.M.P. & PERMITTING**  
4-3-09



**SMRI**  
ARCHITECTURE  
ENGINEERING  
PLANNING  
INTERIOR DESIGN  
COMMISSIONING

**MARTIN'S POINT HEALTH CARE**  
MEDICAL OFFICE BUILDING  
PORTLAND, MAINE

**EXTERIOR DOOR & WINDOW**  
SECTIONS AND DETAILS

SCALE:	AS NOTED	DATE:	
SHEET NUMBER:	108	GRAPHIC SCALE:	0'
DATE OF RECORD:	08/12/09	SHEET NO.:	1
PROJECT NO.:	08123	SHEET NO.:	1
PROJECT NO.:	08123	SHEET NO.:	1

**AE632**

PROGRESS PRINT