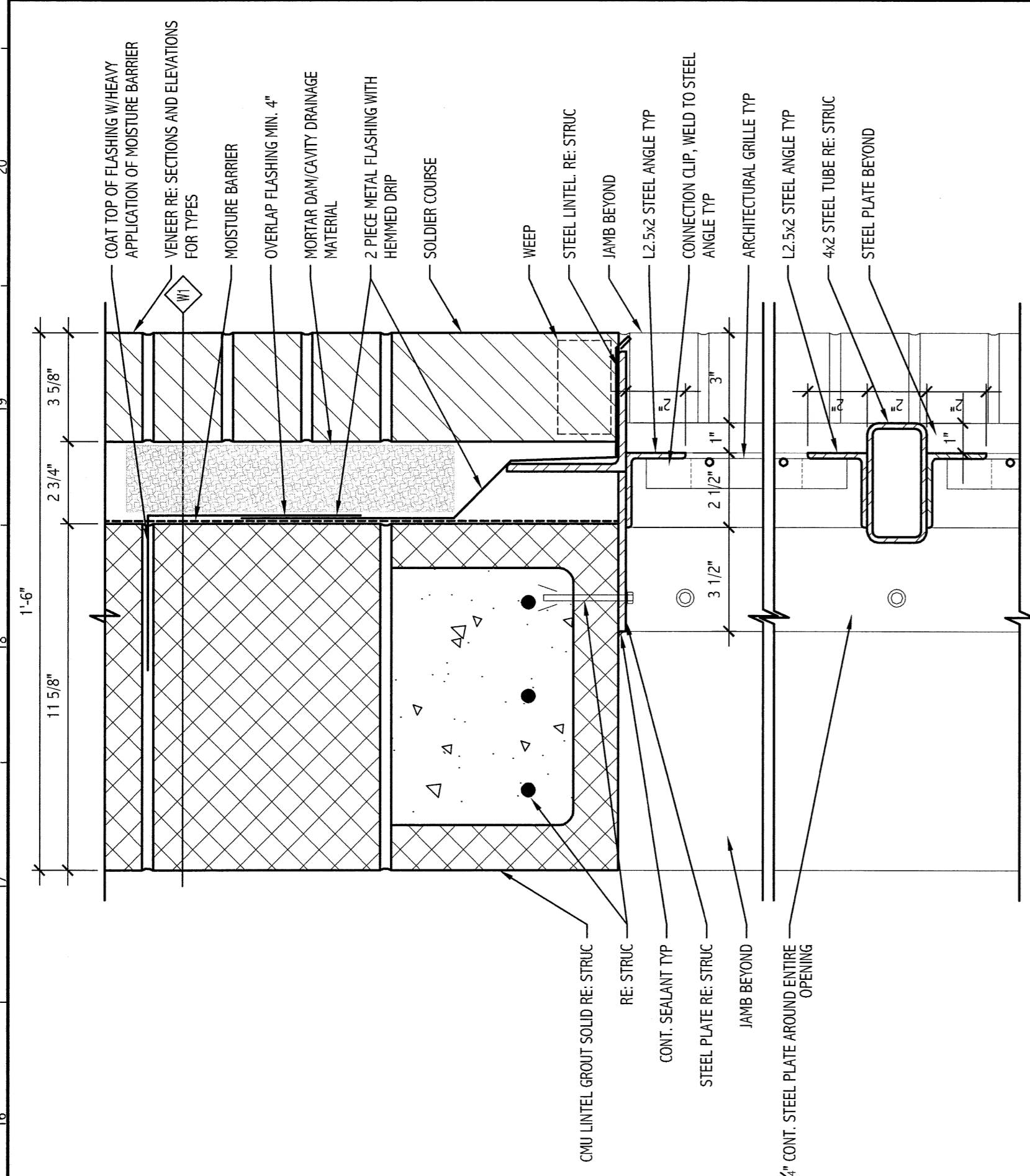
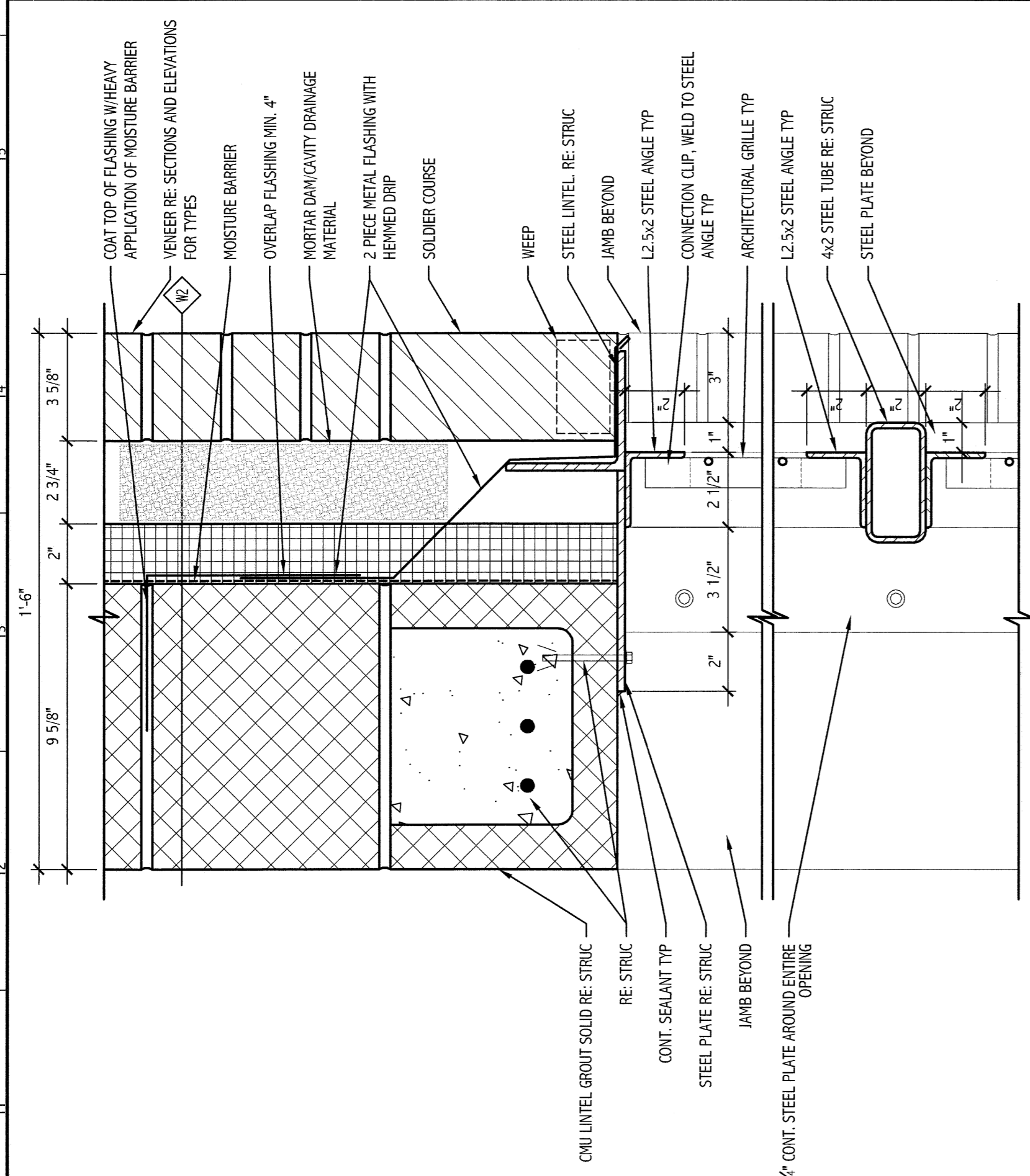


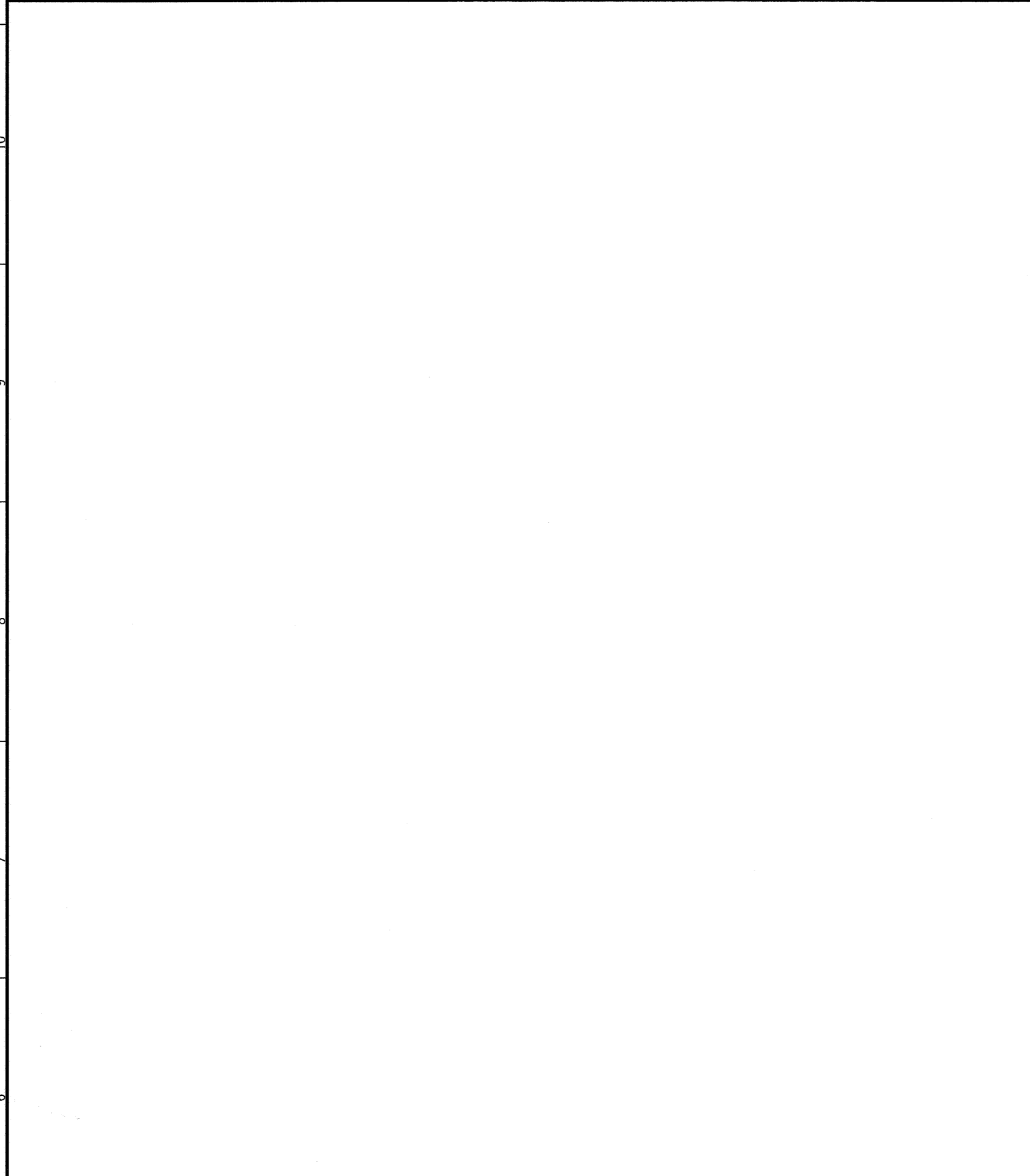
**GENERAL NOTES:**  
 1. SEE G001 FOR PROJECT GENERAL NOTES.



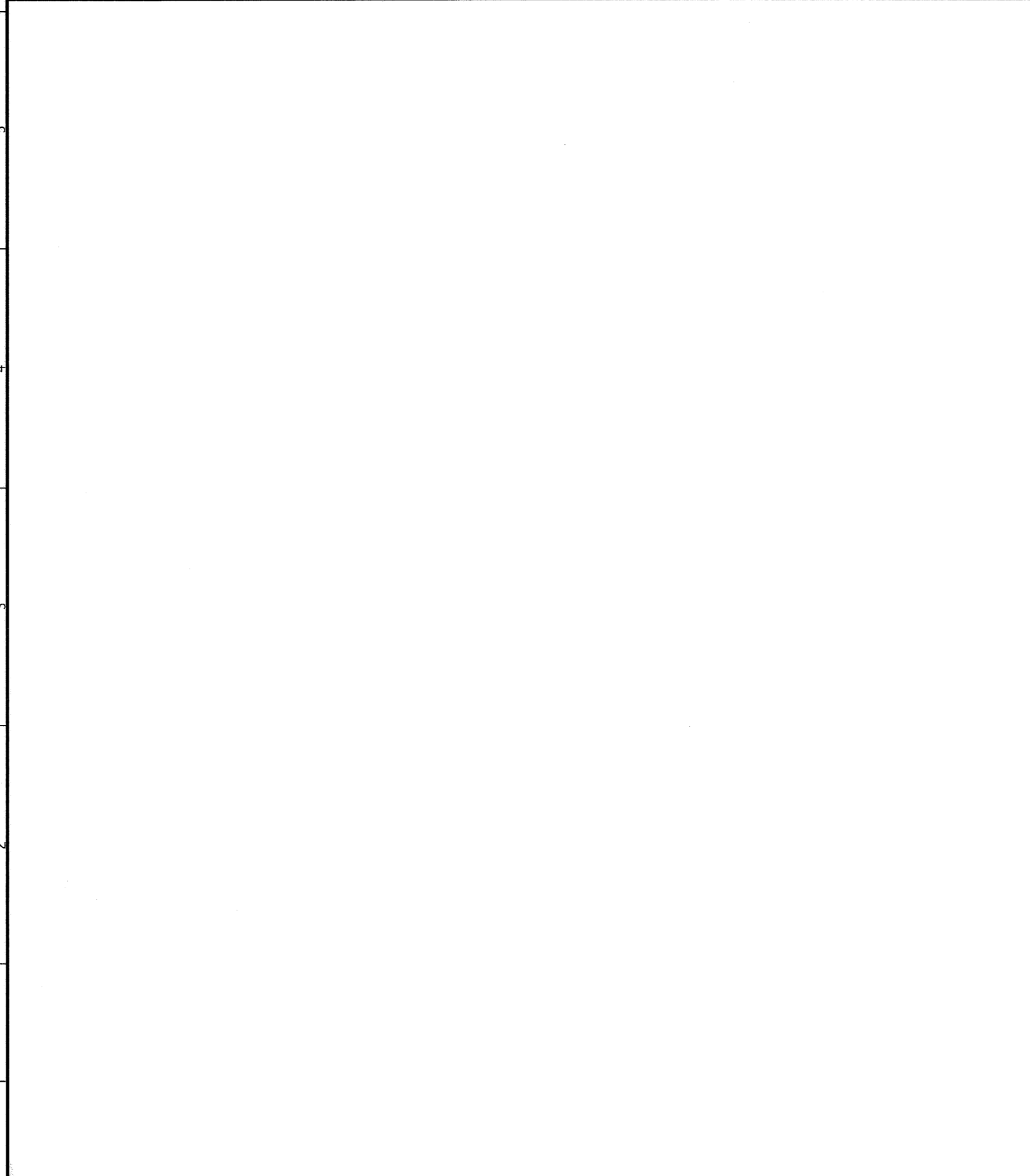
**M16 HEAD DETAIL AT GRILLE**  
 3" = 1'-0"  
 AE622



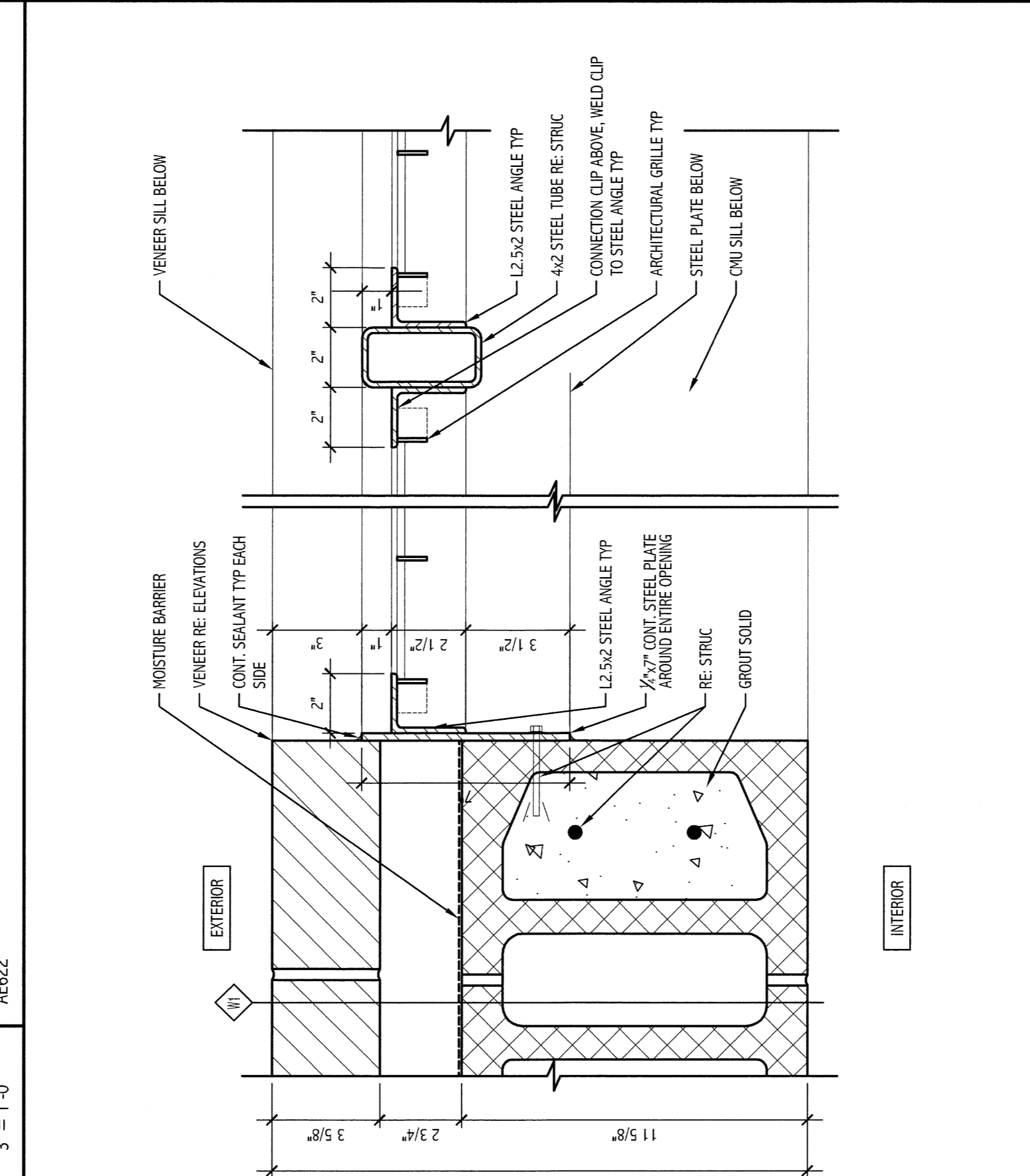
**M11 HEAD DETAIL AT GRILLE**  
 3" = 1'-0"  
 AE622



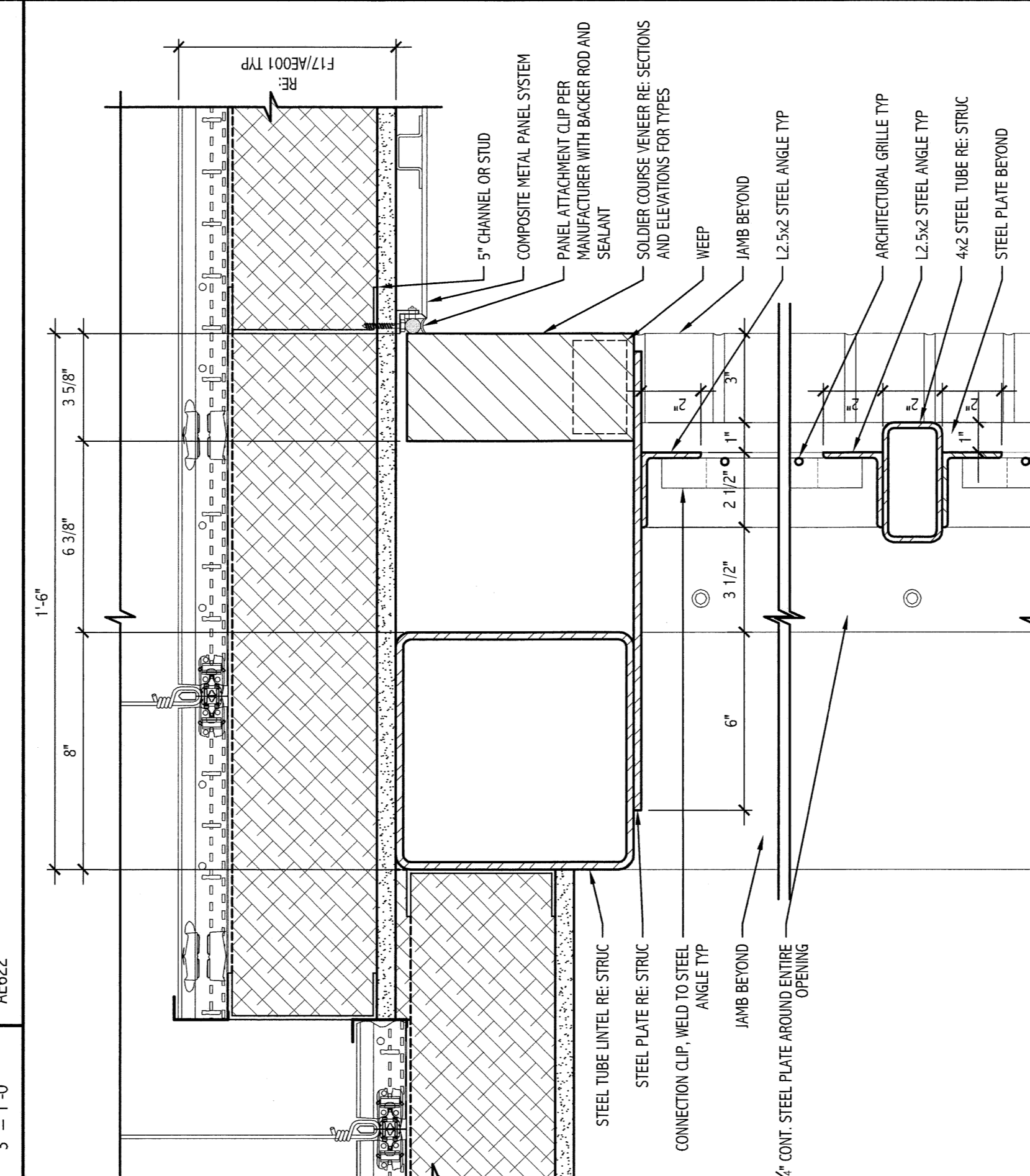
**M6 SECTION DETAIL**  
 1 1/2" = 1'-0"



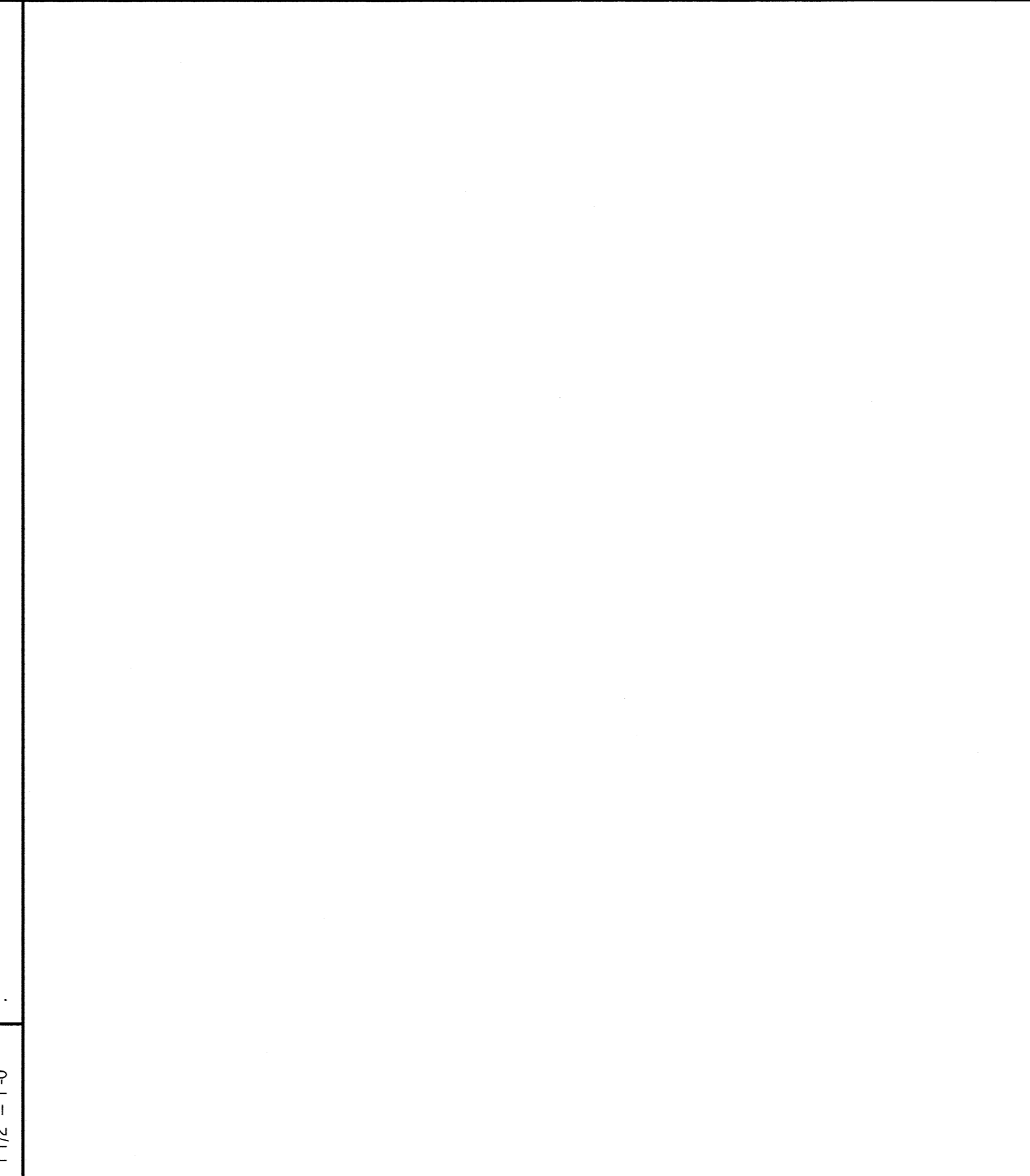
**M1 SECTION DETAIL**  
 1 1/2" = 1'-0"



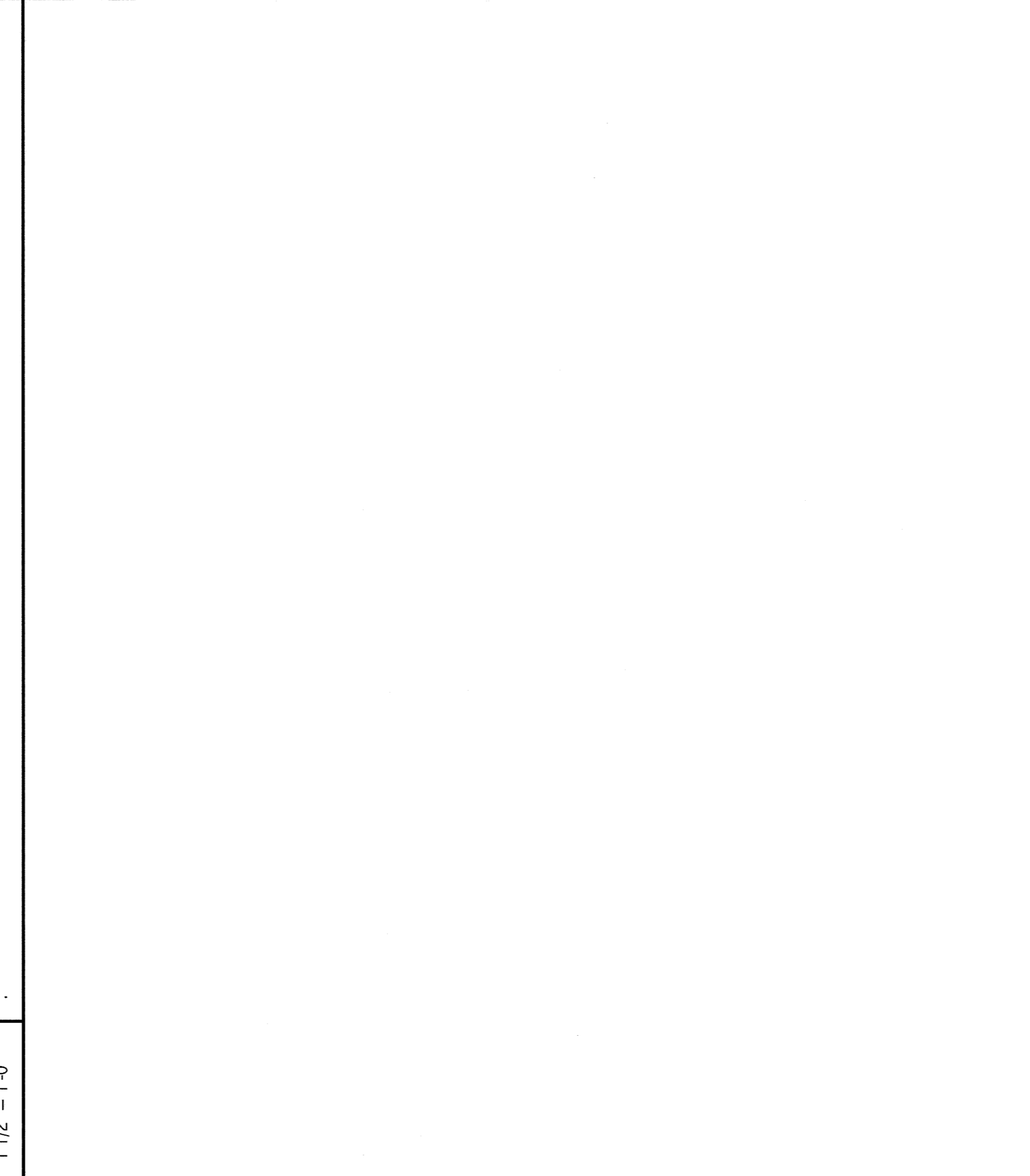
**F16 JAMB DETAIL AT GRILLE**  
 3" = 1'-0"  
 AE622



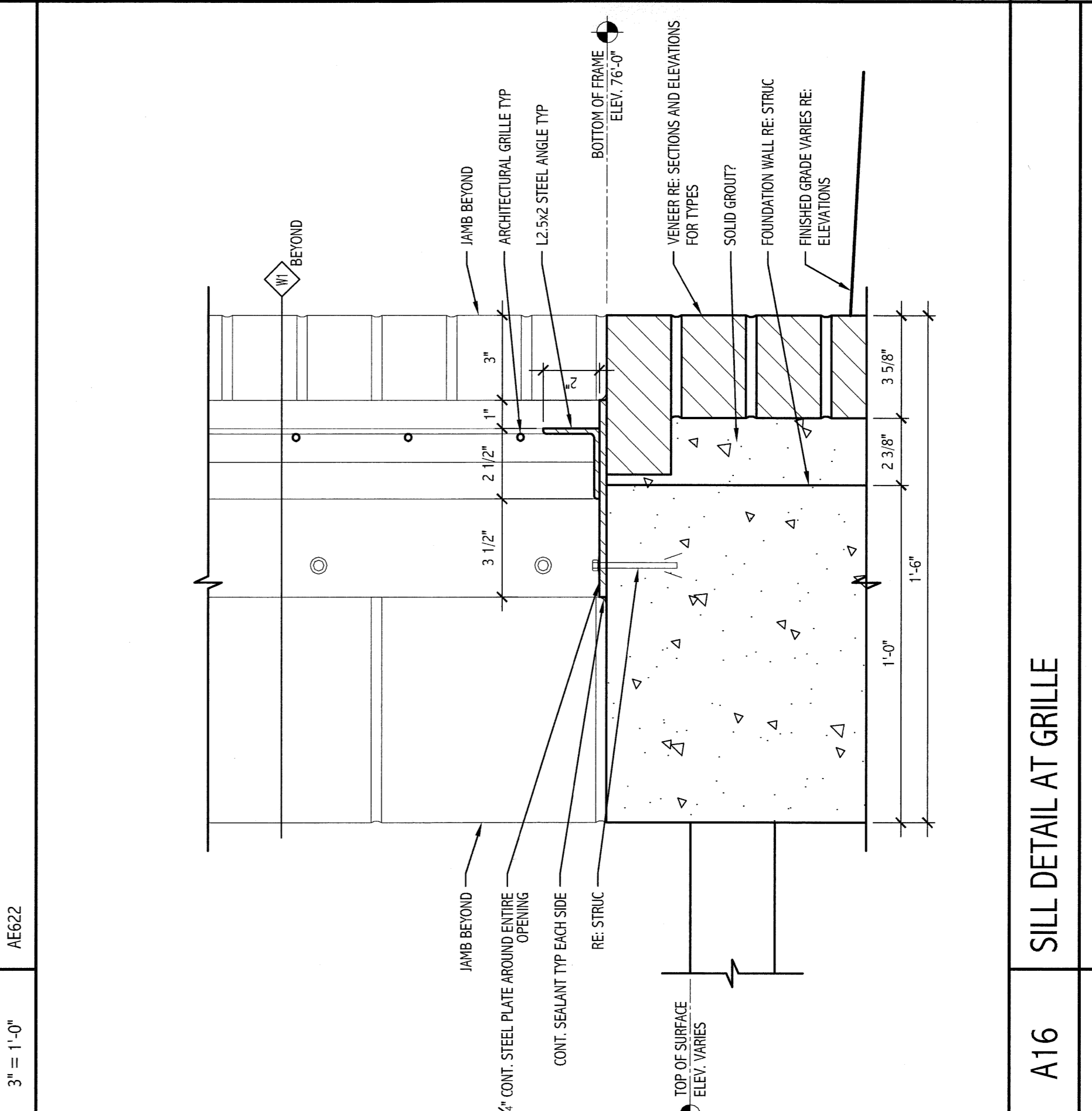
**F11 HEAD DETAIL AT GRILLE**  
 3" = 1'-0"  
 AE622



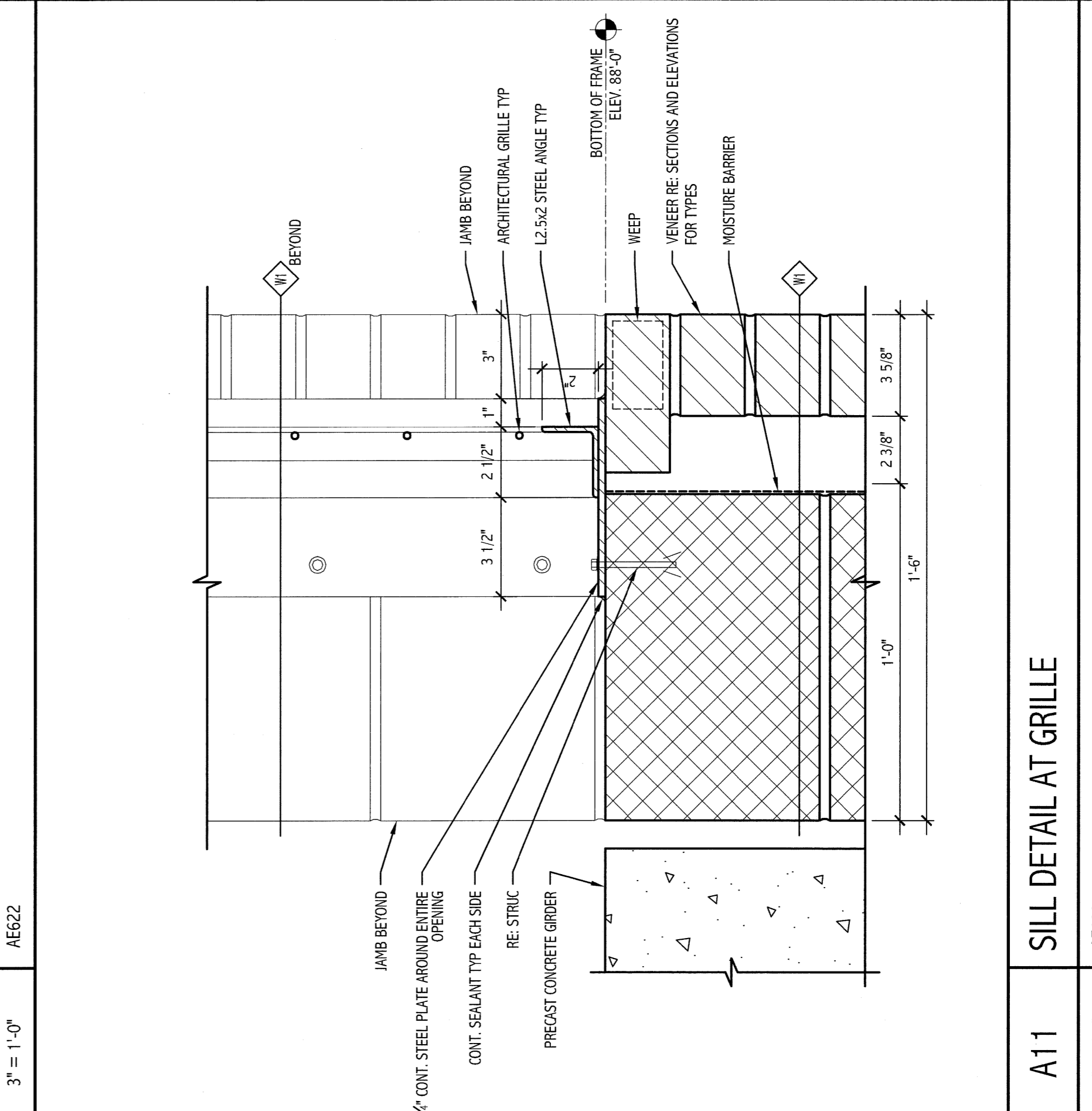
**F6 SECTION DETAIL**  
 1 1/2" = 1'-0"



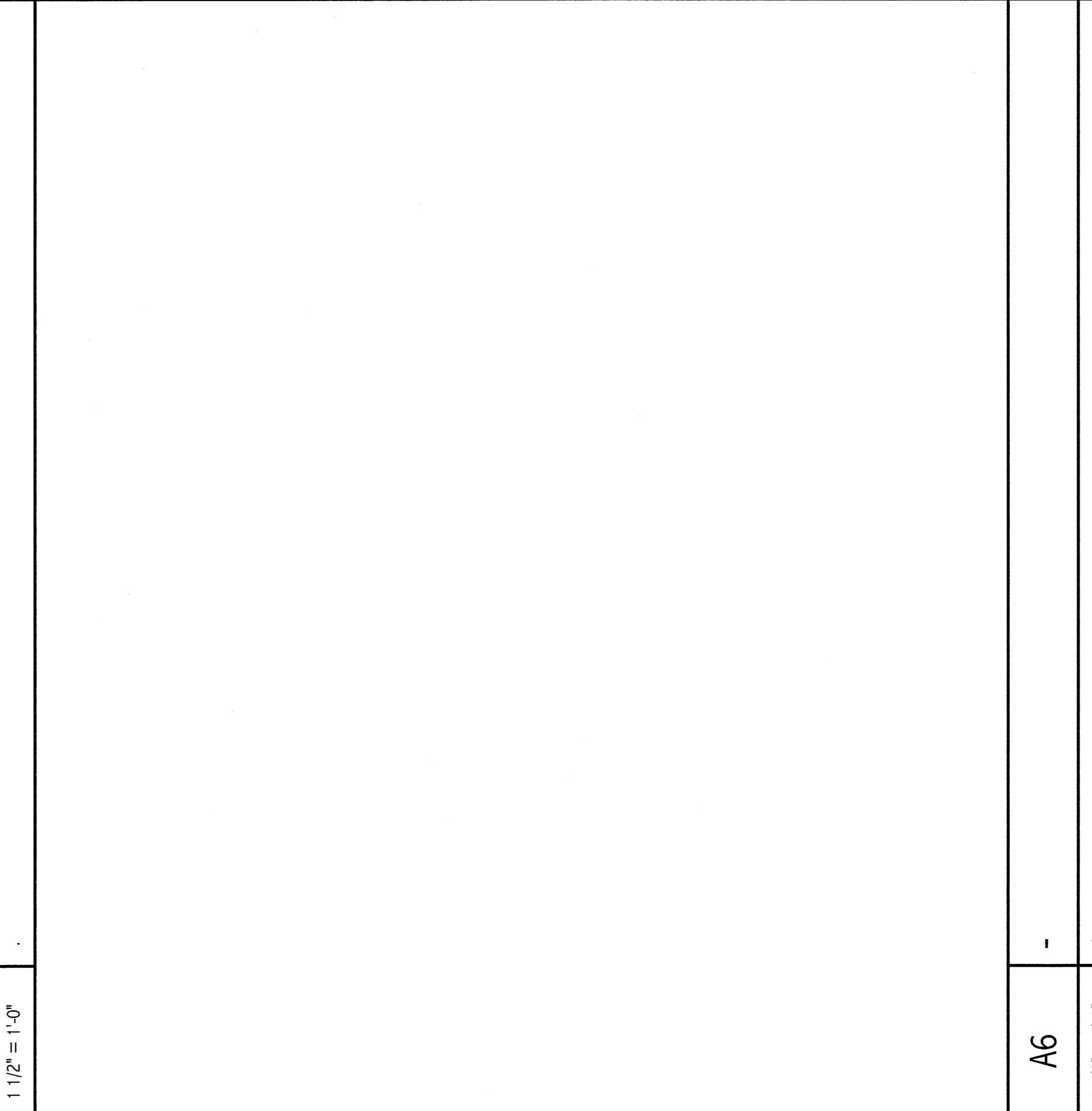
**A1 SECTION DETAIL**  
 1 1/2" = 1'-0"



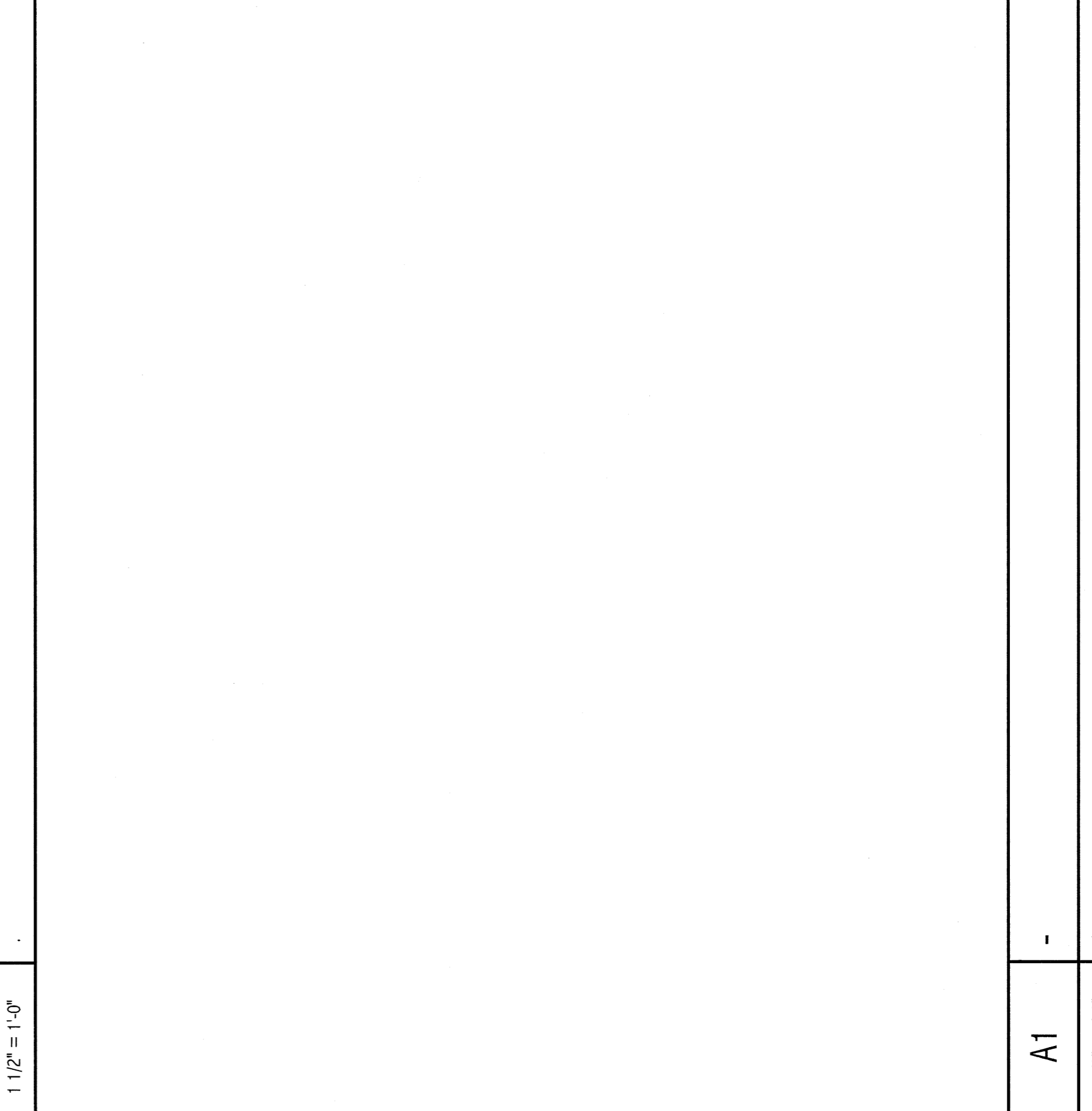
**A16 SILL DETAIL AT GRILLE**  
 3" = 1'-0"  
 AE622



**A11 SILL DETAIL AT GRILLE**  
 3" = 1'-0"  
 AE622



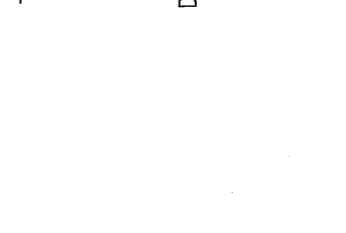
**A6 SECTION DETAIL**  
 1 1/2" = 1'-0"



**A1 SECTION DETAIL**  
 1 1/2" = 1'-0"

REV.	DESCRIPTION	DATE

ISSUED FOR G.M.P. & PERMITTING  
 4-3-09



ARCHITECTURE  
 ENGINEERING  
 PLANNING  
 INTERIOR DESIGN  
 COMMISSIONING

**SMRI**  
 MARTIN'S POINT HEALTH CARE  
 MEDICAL OFFICE BUILDING  
 PORTLAND, MAINE

EXTERIOR DOOR & WINDOW  
 SECTIONS AND DETAILS

SCALE:	AS NOTED	DATE:	
PROJECT NUMBER:		SUB:	GRAPHIC SCALE: 0"
JOB CAPTION:		TITLE:	
DATE OF RECORD:		SUB:	
SHEET CODE:	AE631-28129	SUB:	
PROJECT NO.:	08129	SHEET NO.:	AE631

PROGRESS PRINT