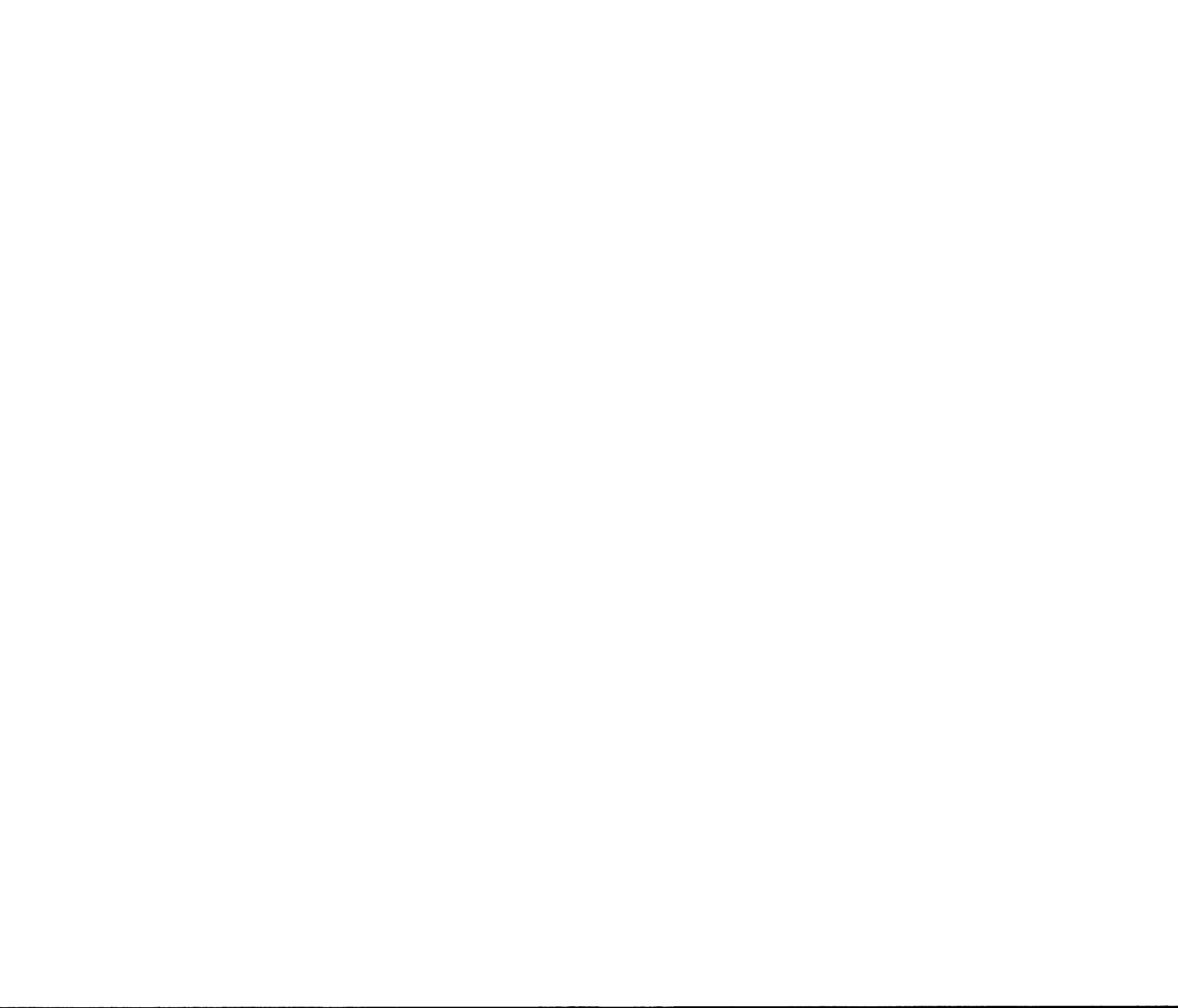


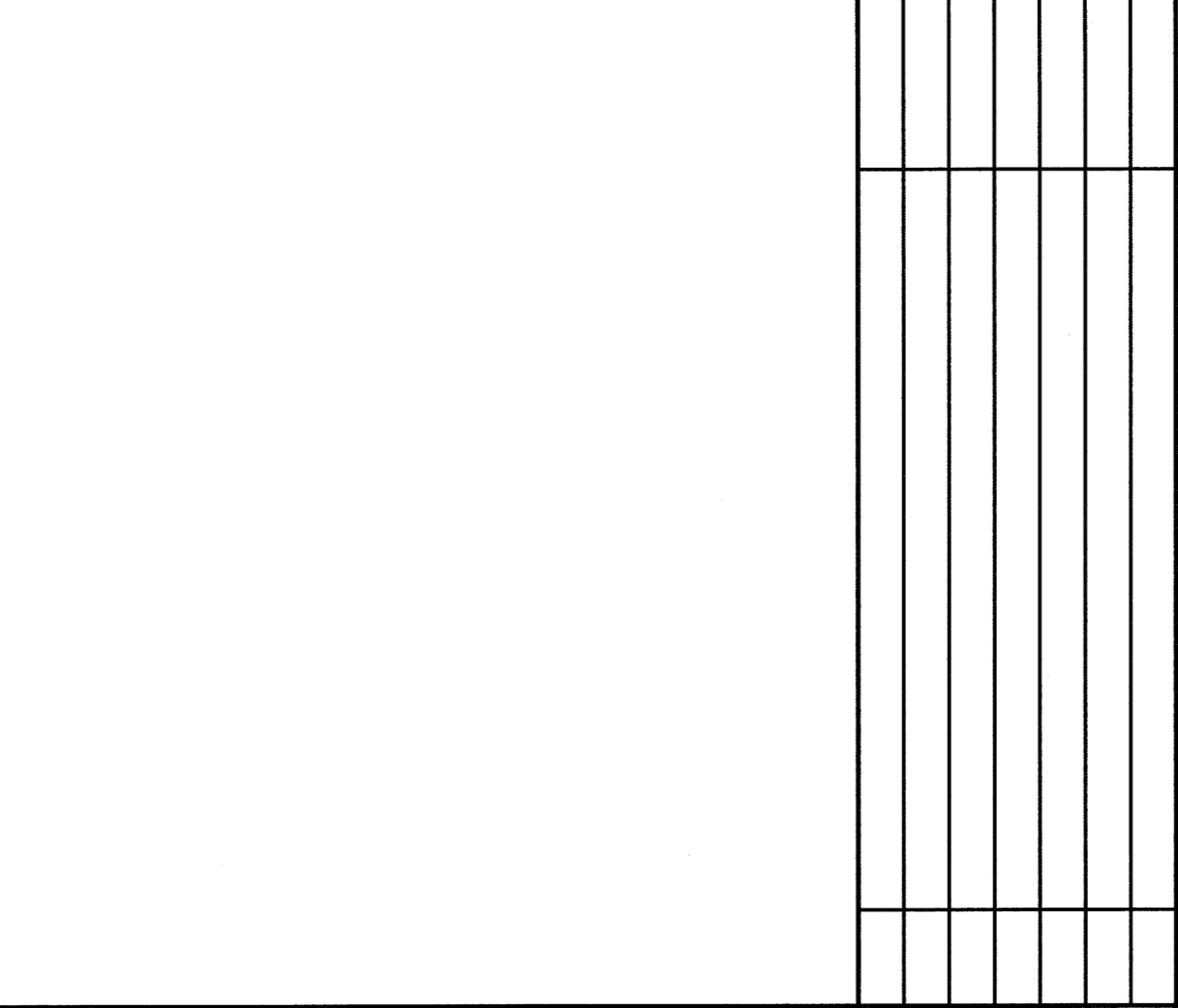
GENERAL NOTES:
1. SEE 0001 FOR PROJECT GENERAL NOTES.



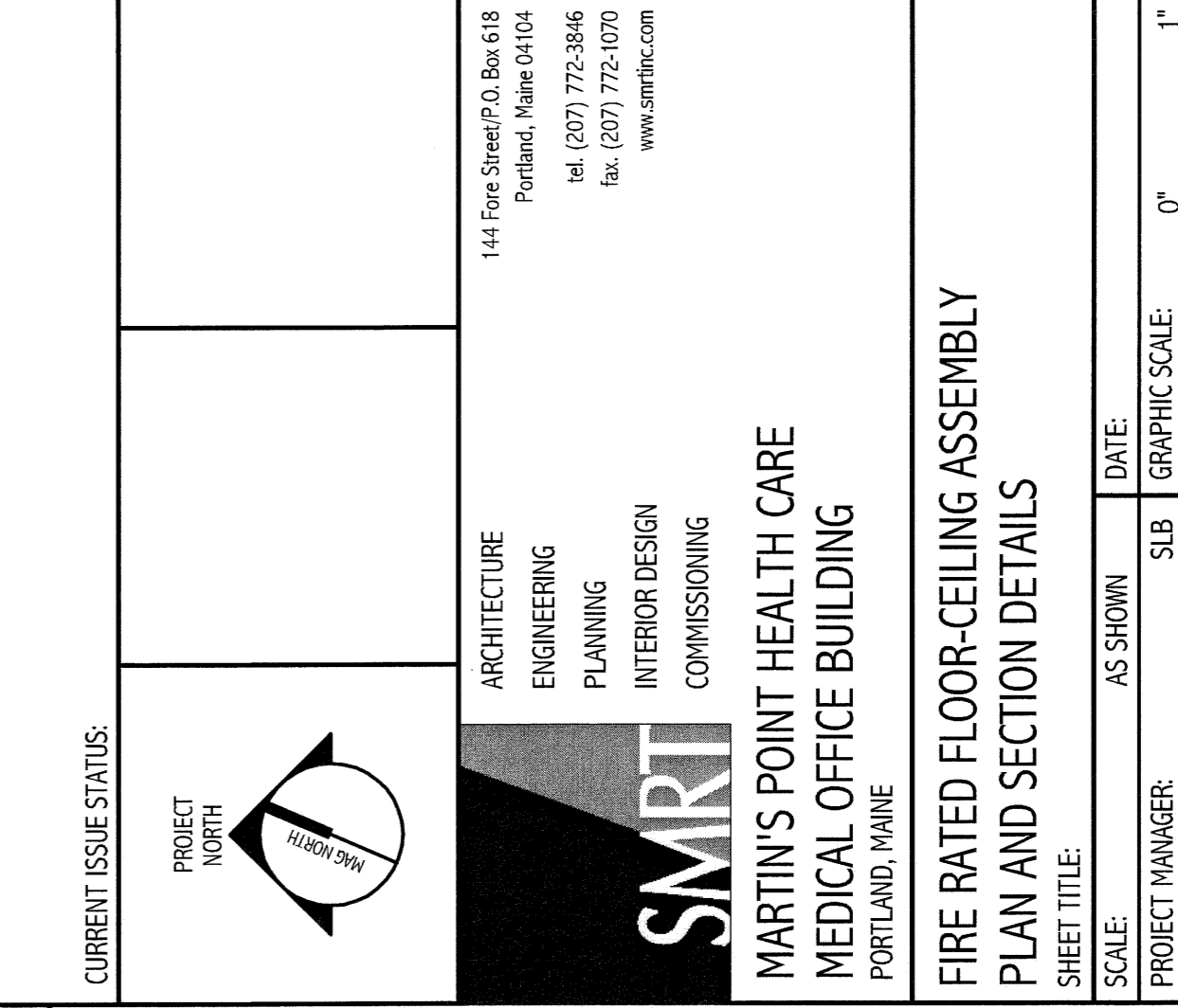
N1
TYPICAL CONTROL JOINT DETAIL
1 1/2" = 1'-0"



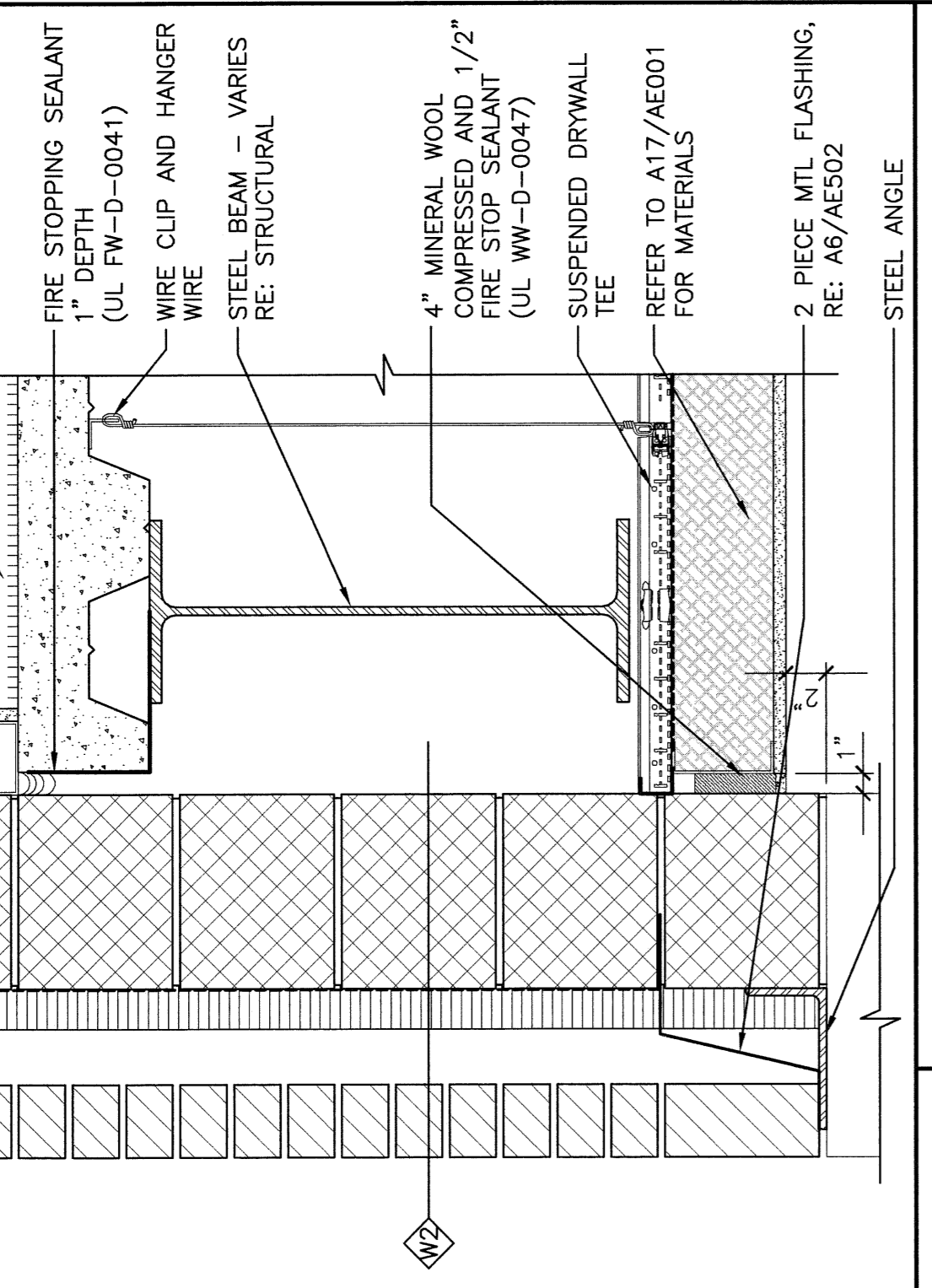
J1
SHEAR WALL SECTION DETAIL
1 1/2" = 1'-0"



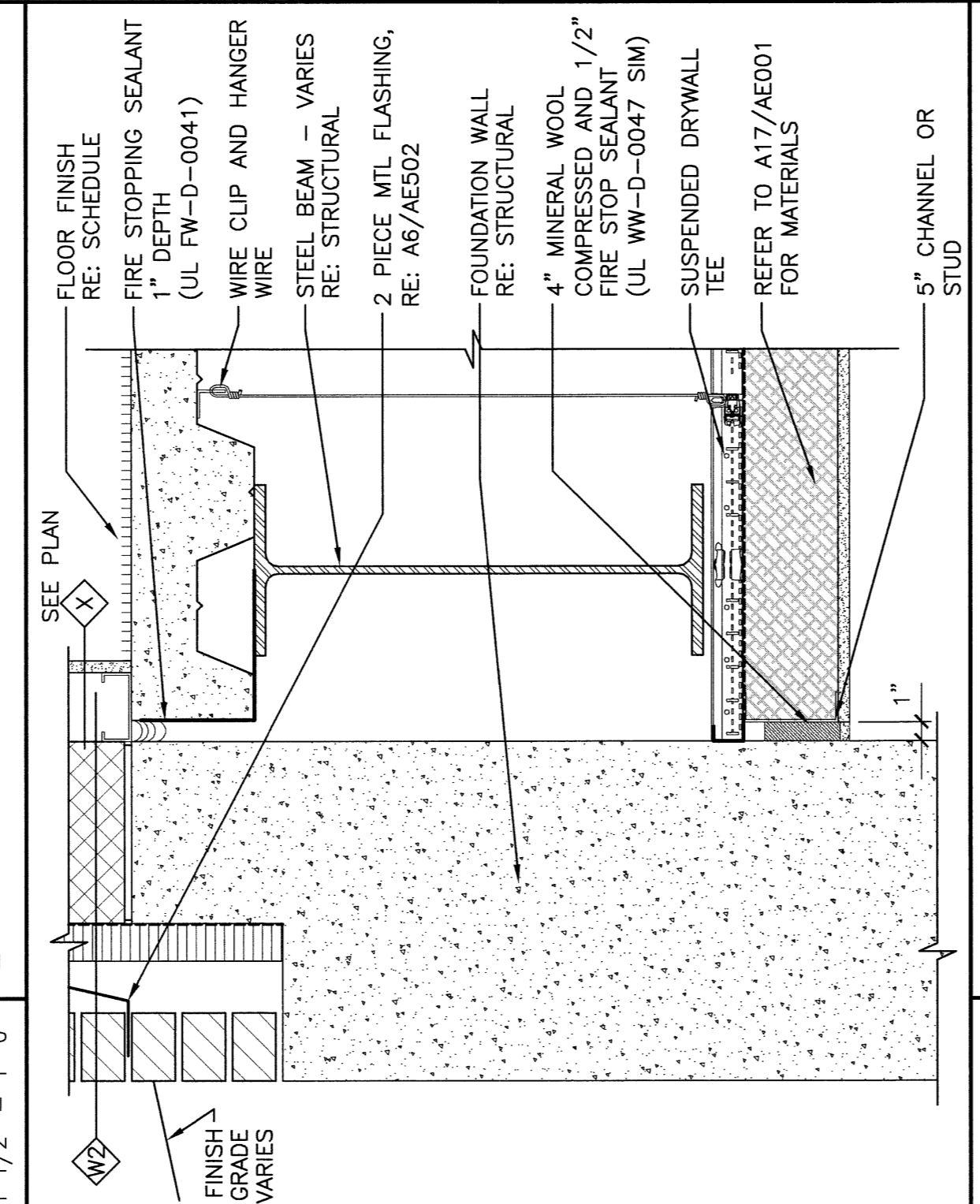
E1
TYPICAL COLUMN SECTION DETAIL
1 1/2" = 1'-0"



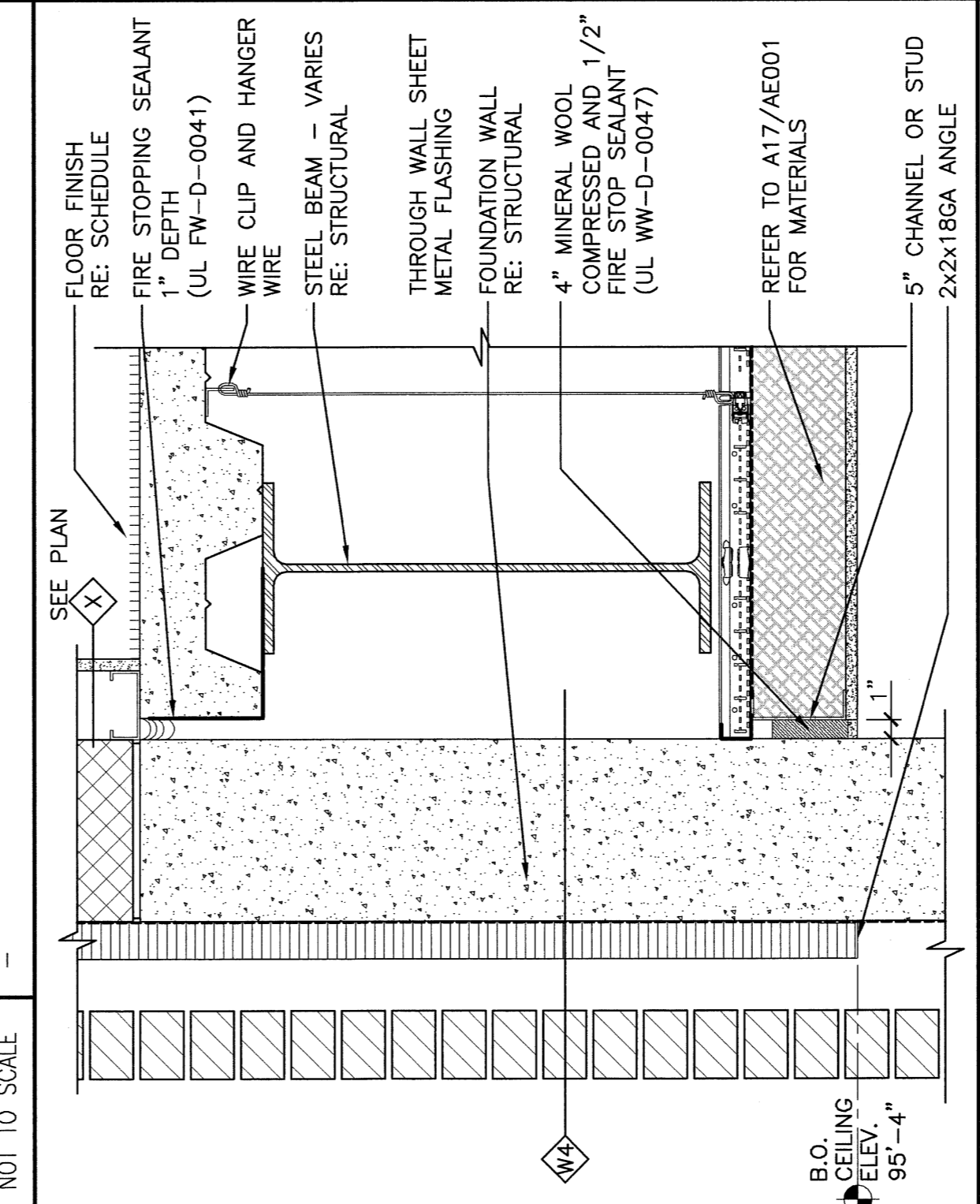
A1
TYPICAL COLUMN PLAN DETAIL
1 1/2" = 1'-0"



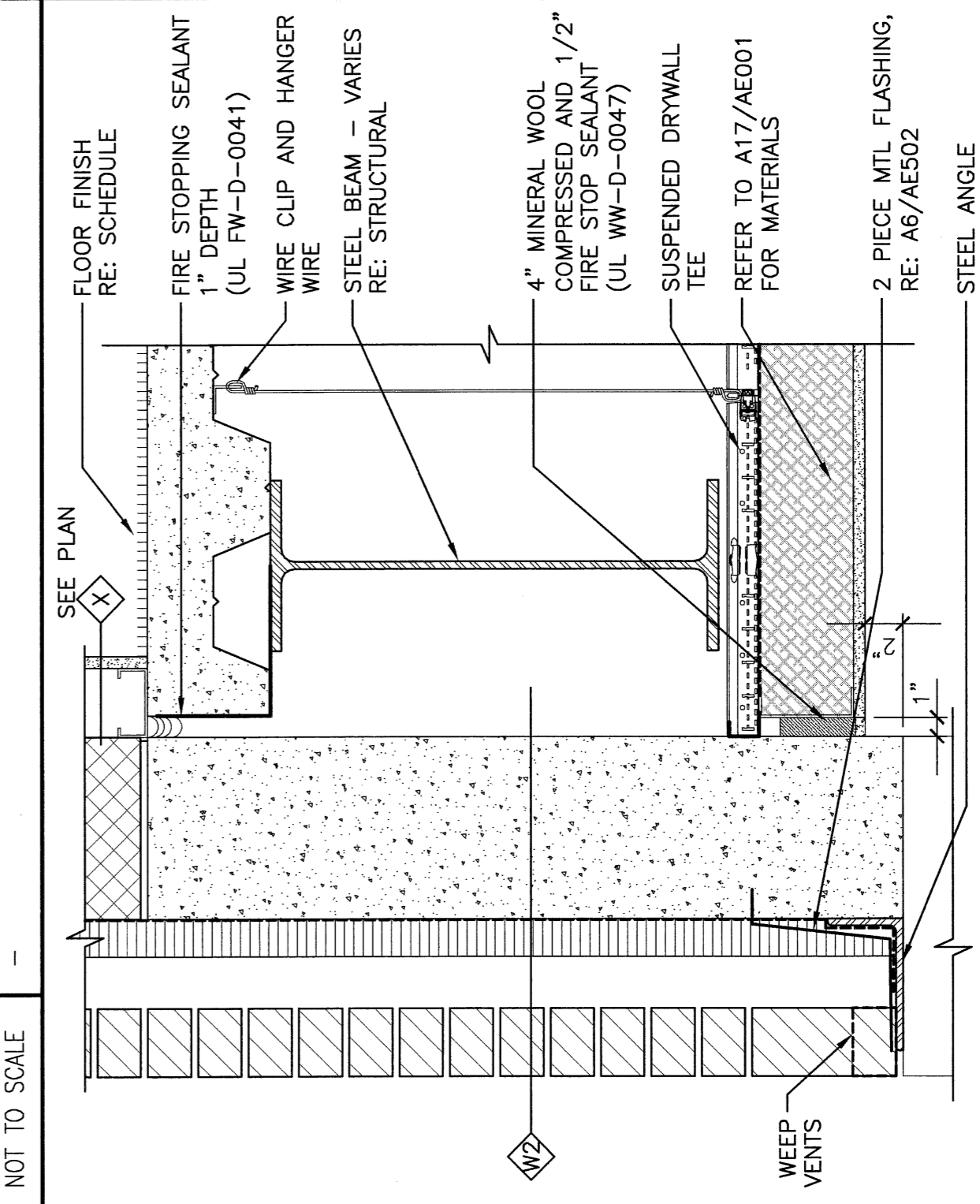
N9
EXPANSION JOINT DETAIL
1 1/2" = 1'-0"



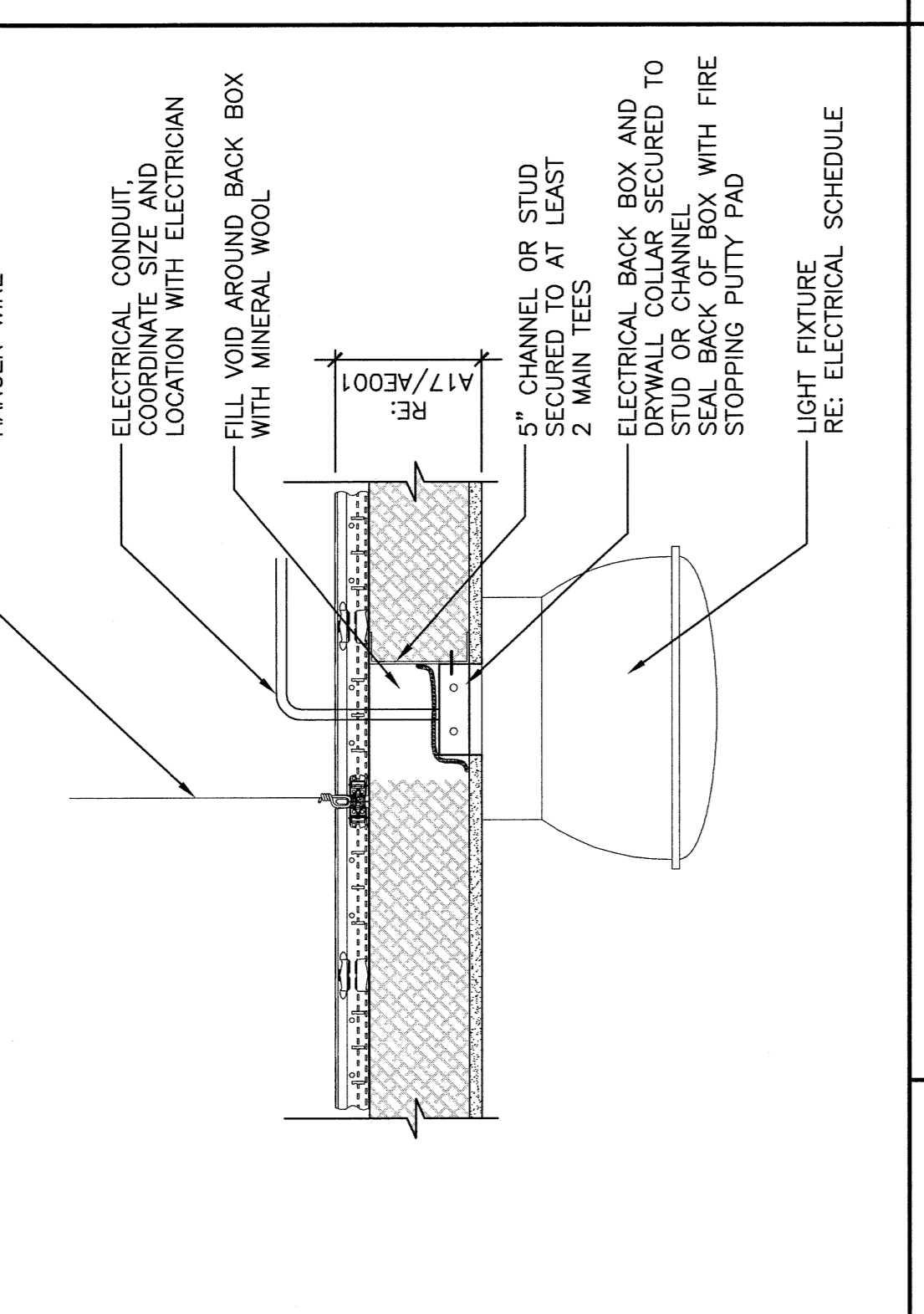
N13
CEILING MOUNTED LIGHT DETAIL
1 1/2" = 1'-0"



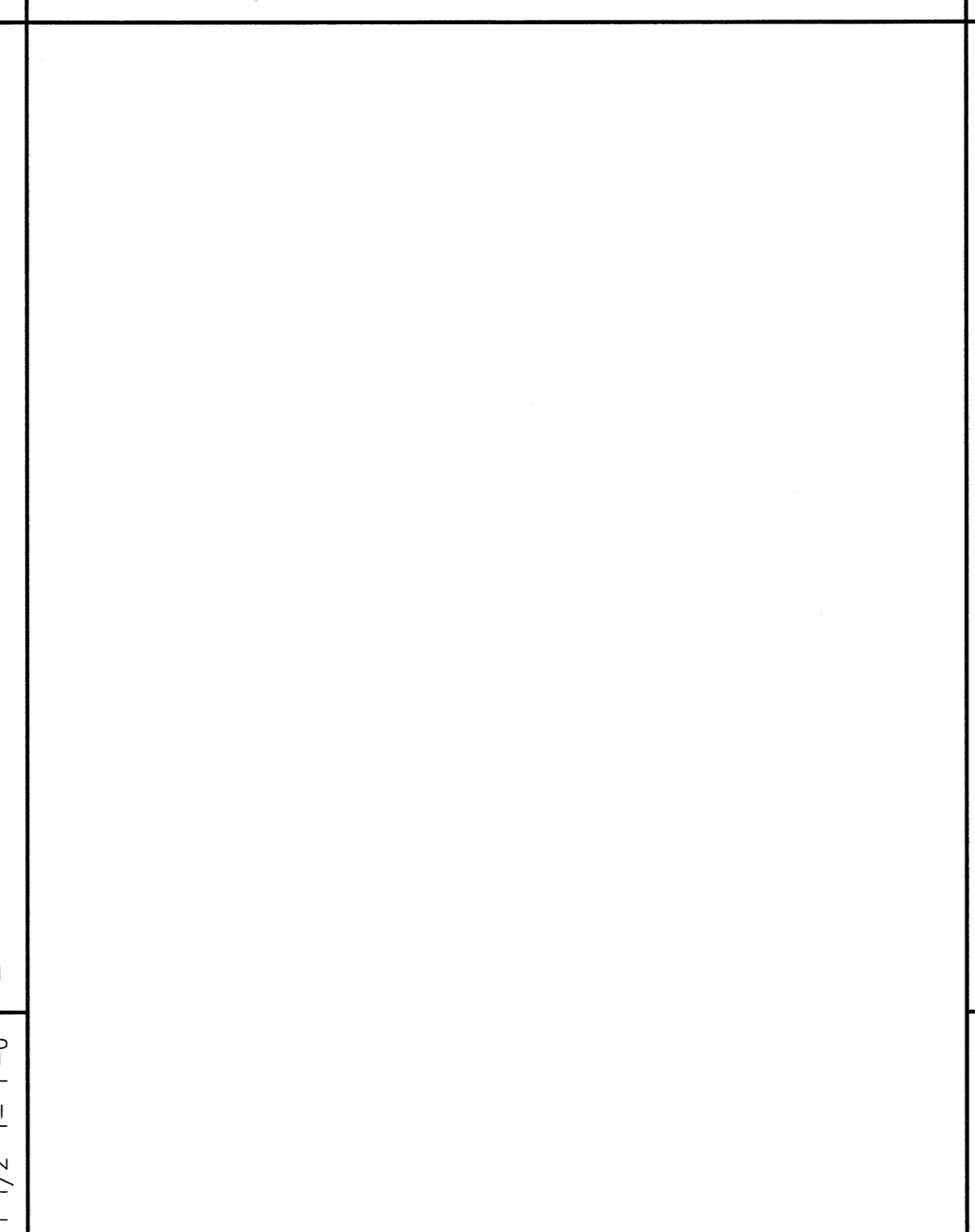
J9
PRECAST SHAFT SECTION DETAIL
1 1/2" = 1'-0"



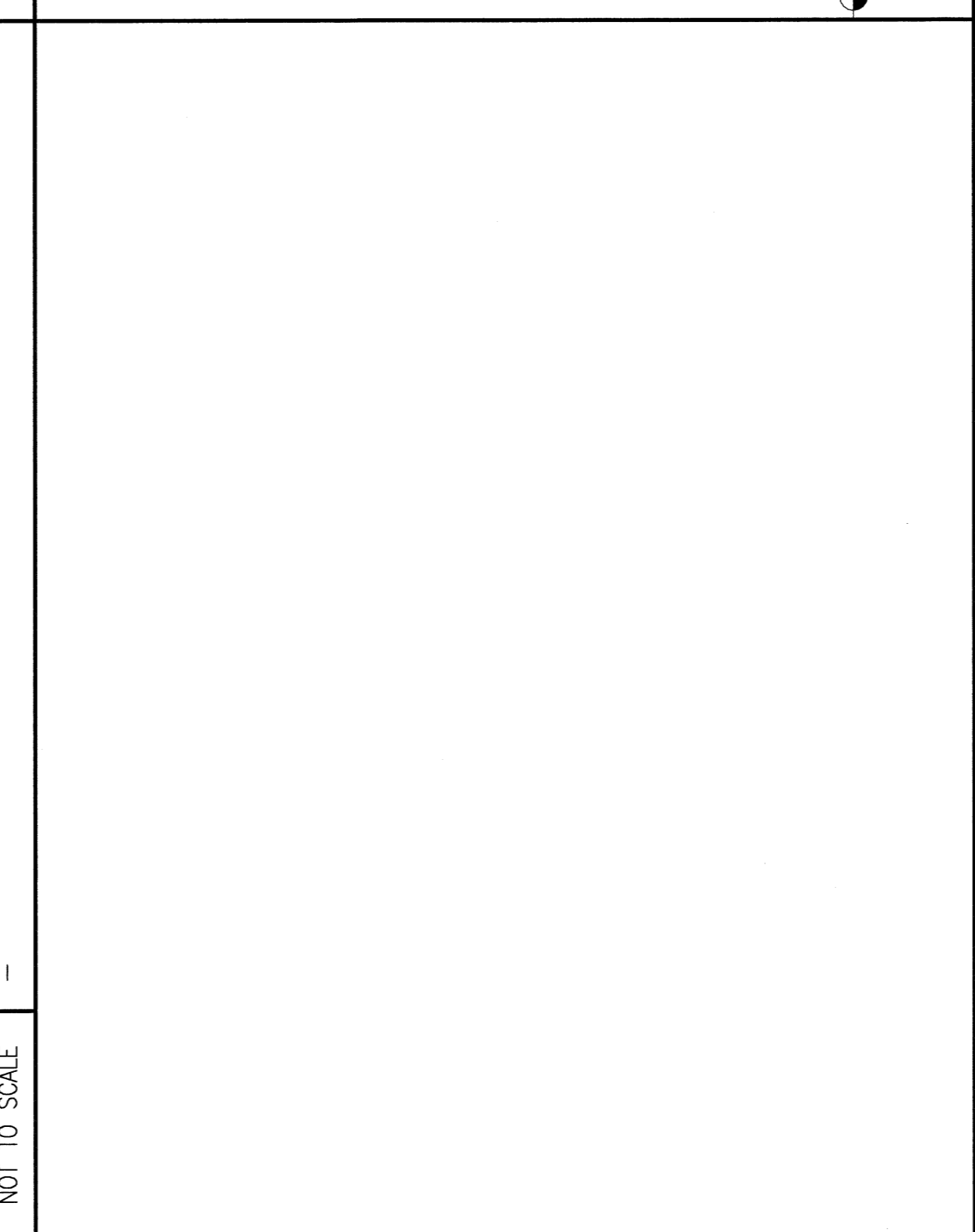
E5
CEILING TRANSITION DETAIL
1 1/2" = 1'-0"



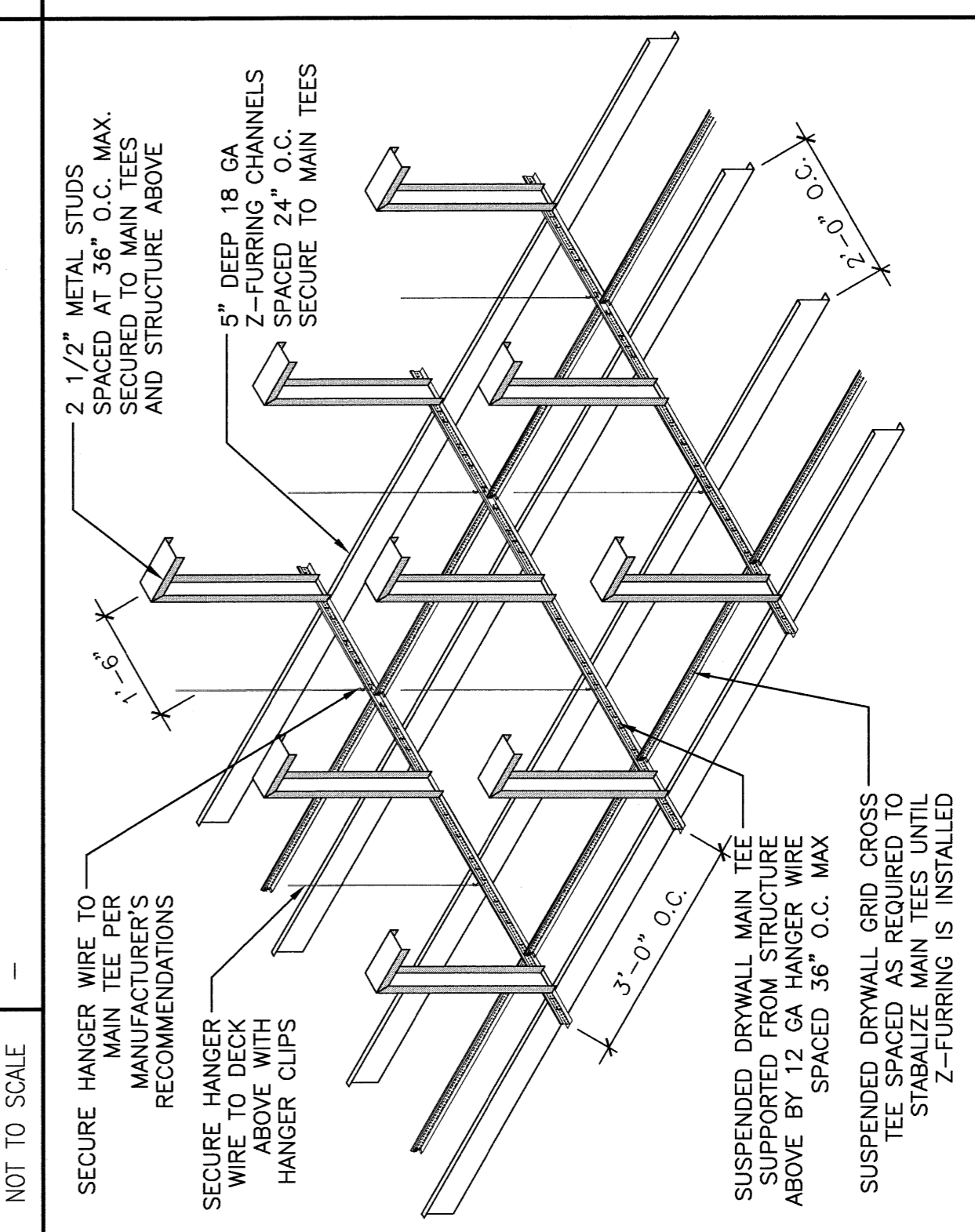
N17
SECTION DETAIL
1 1/2" = 1'-0"



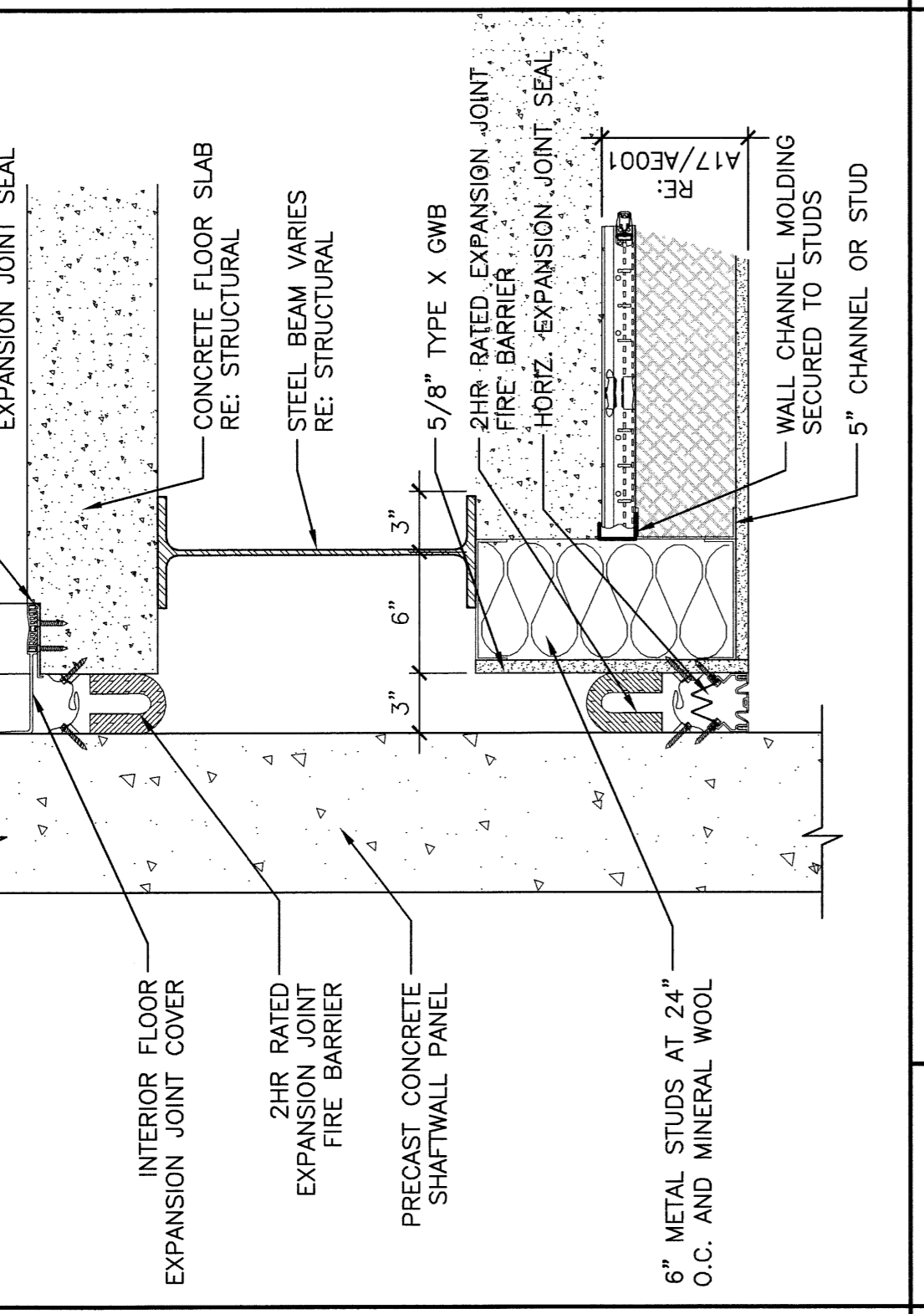
J17
SECTION DETAIL
NOT TO SCALE



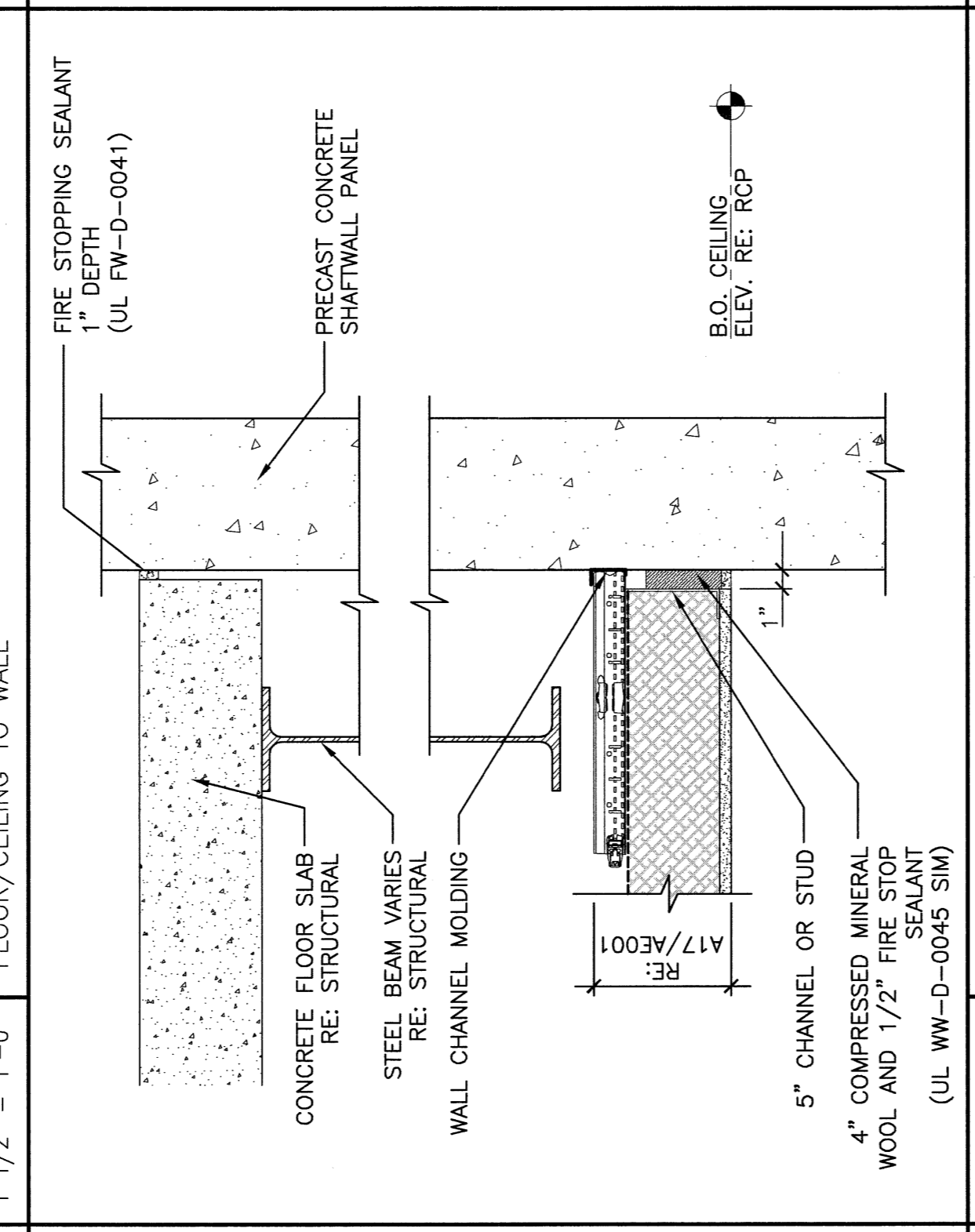
D13
SECTION DETAIL
NOT TO SCALE



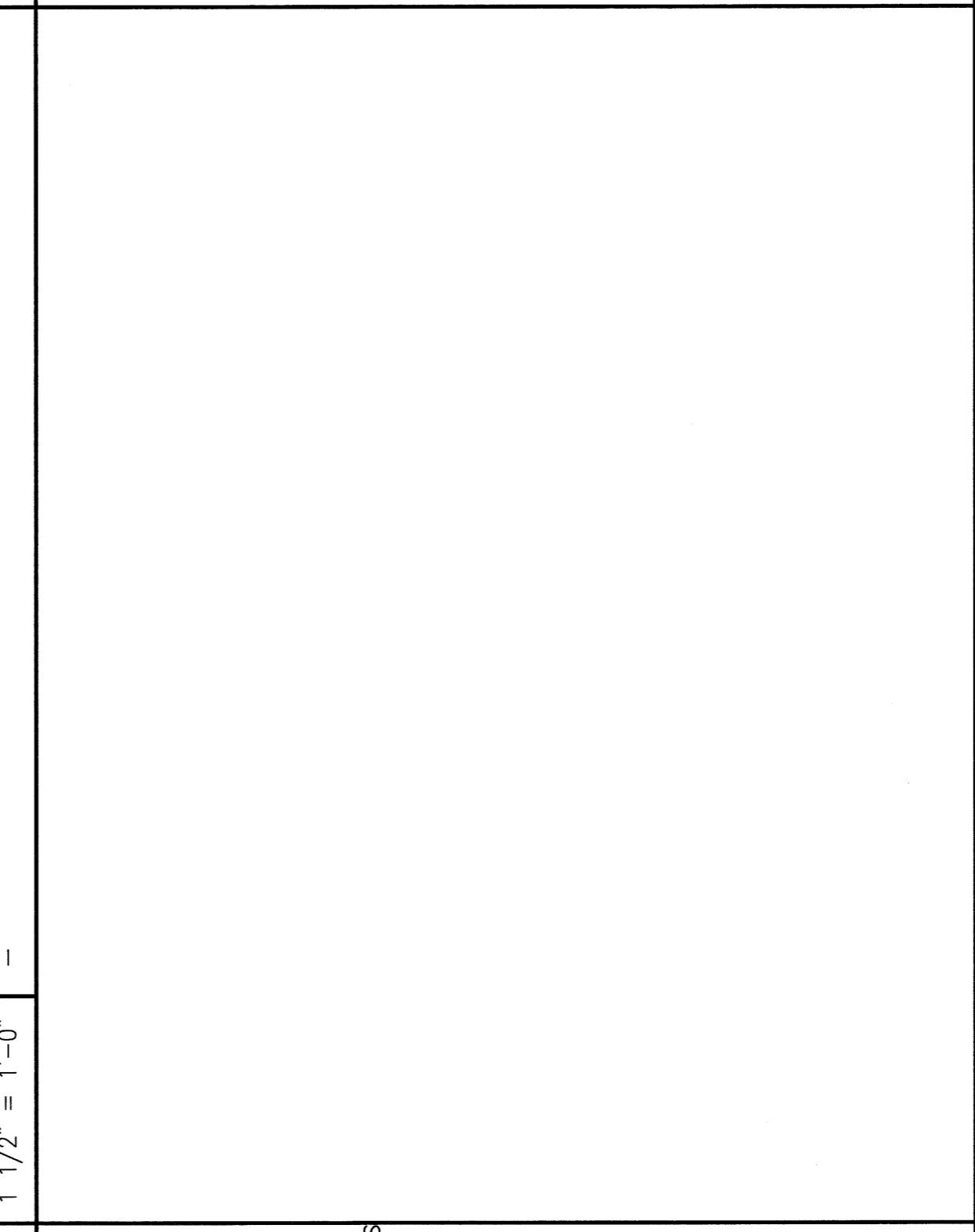
A13
TYPICAL CEILING FRAMING ISOMETRIC
NOT TO SCALE



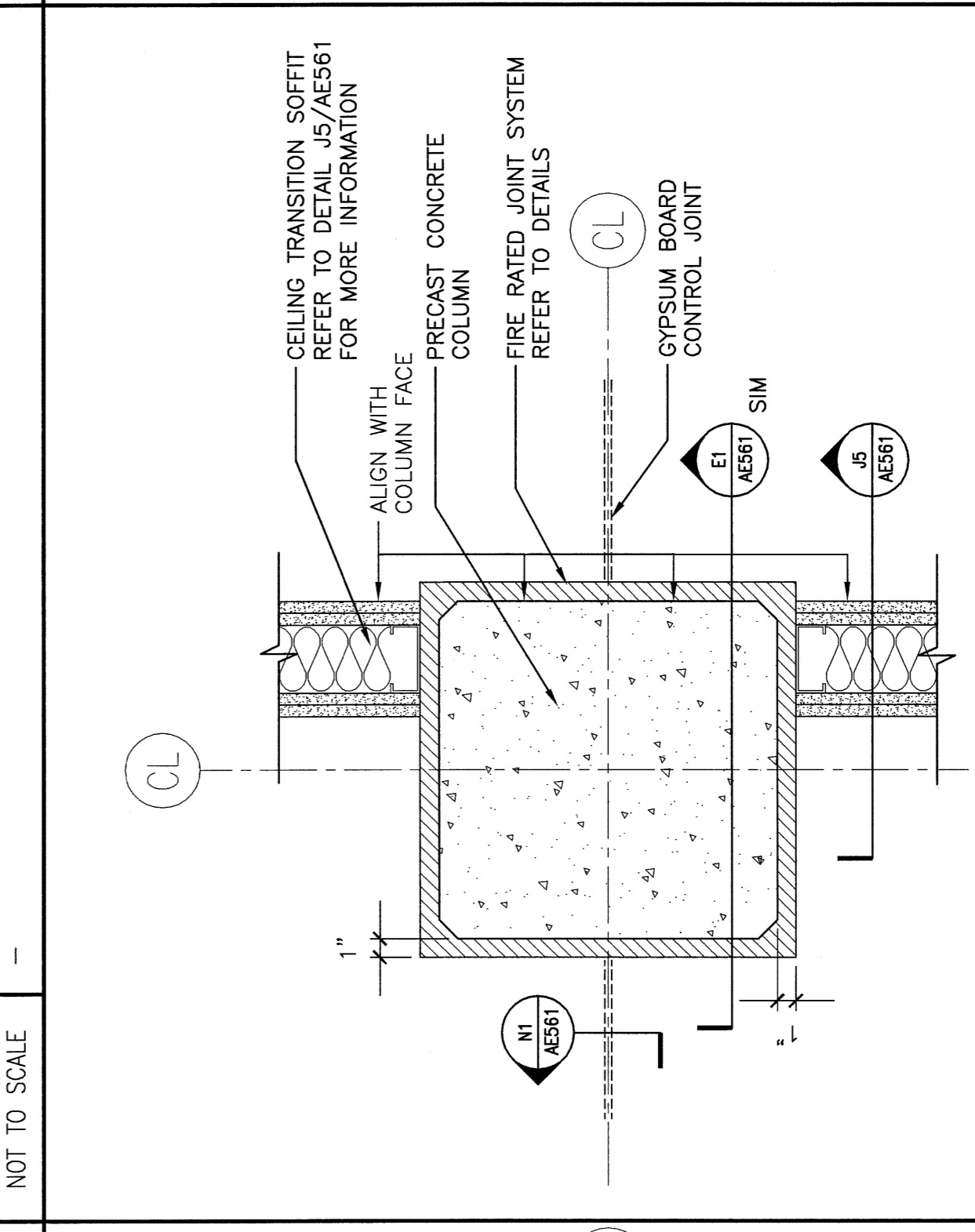
N5
EXPANSION JOINT DETAIL
1 1/2" = 1'-0"



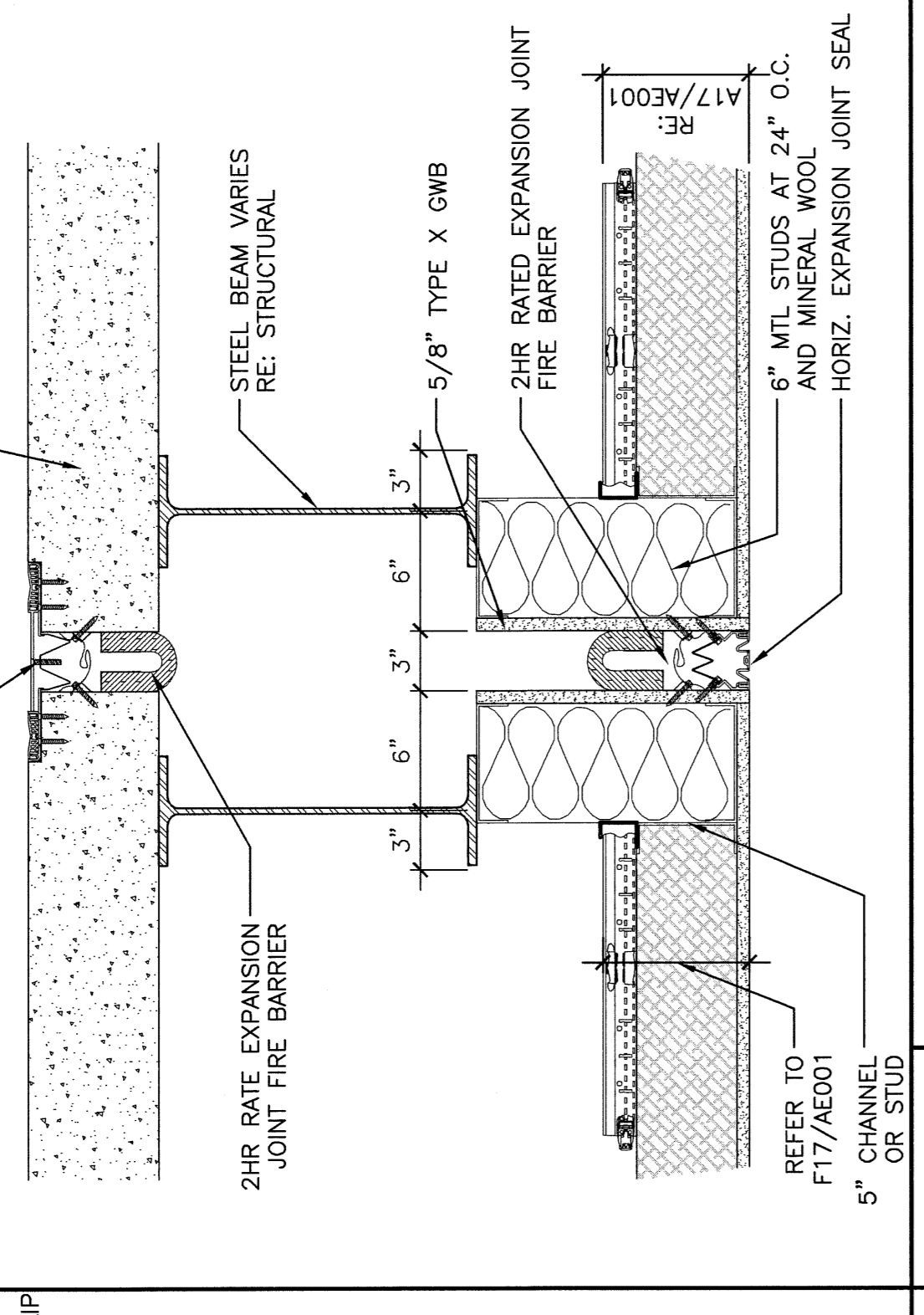
J5
CEILING TRANSITION DETAIL
1 1/2" = 1'-0"



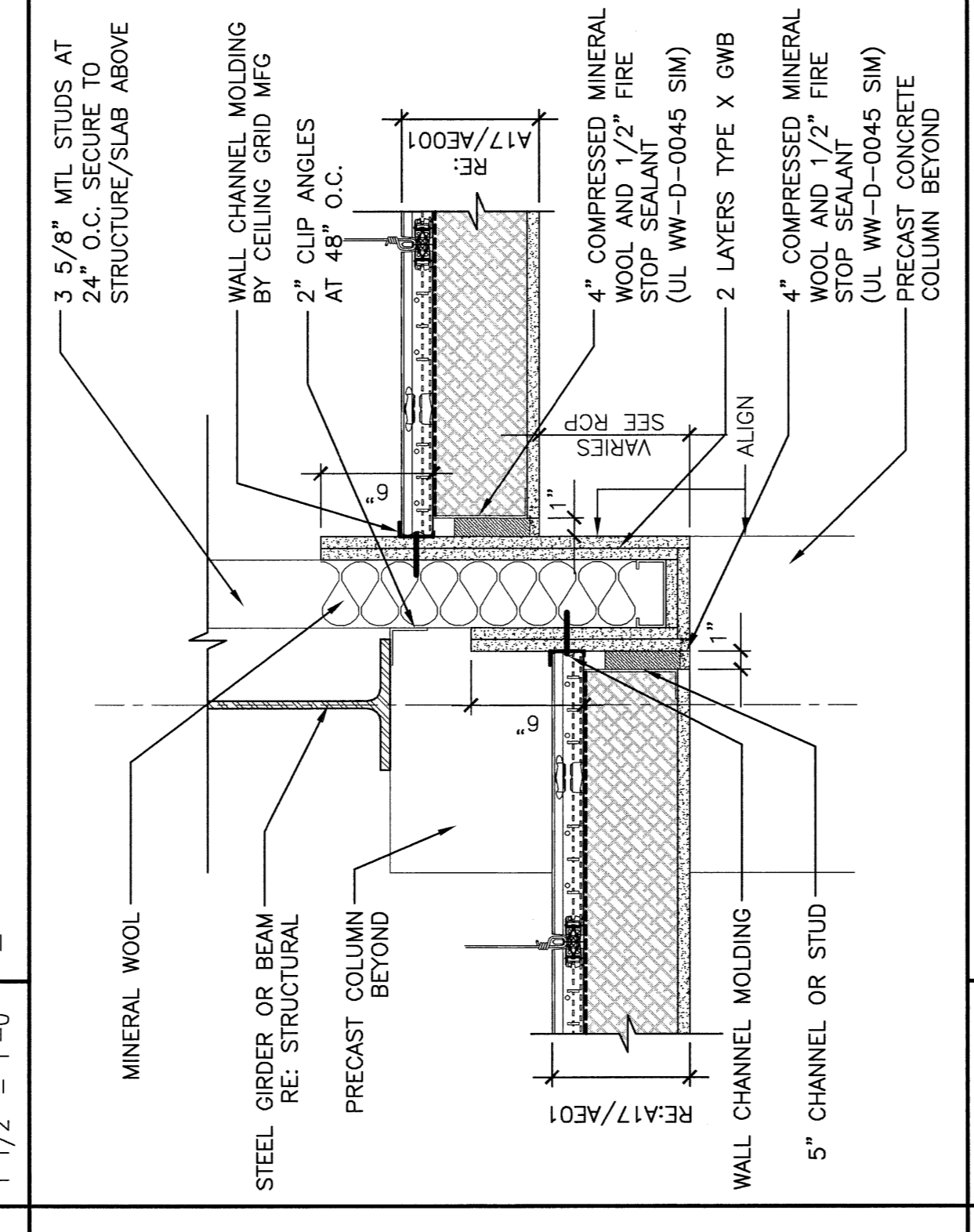
E9
CEILING TRANSITION DETAIL
1 1/2" = 1'-0"



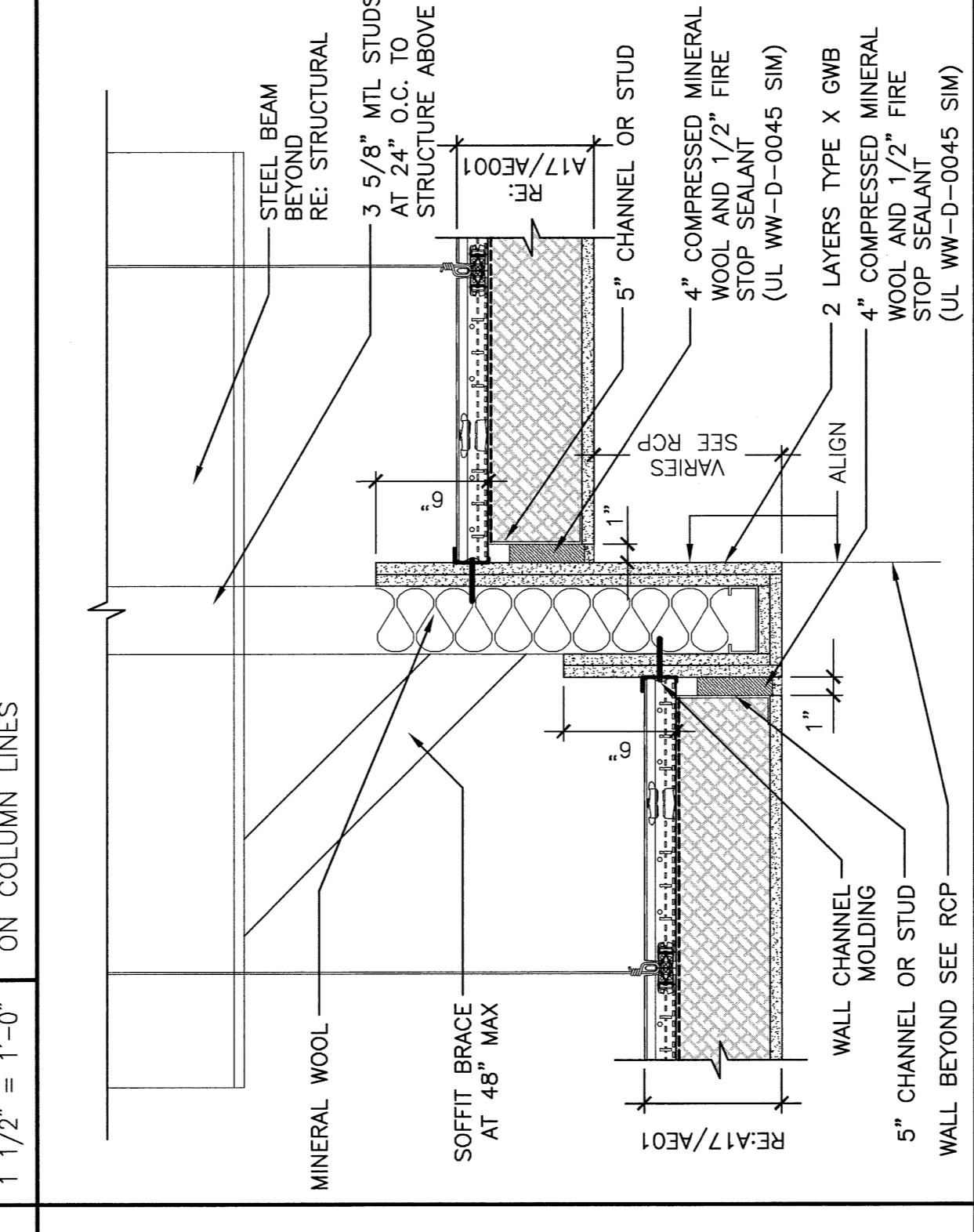
A5
TYPICAL DOUBLE COLUMN DETAIL
1 1/2" = 1'-0"



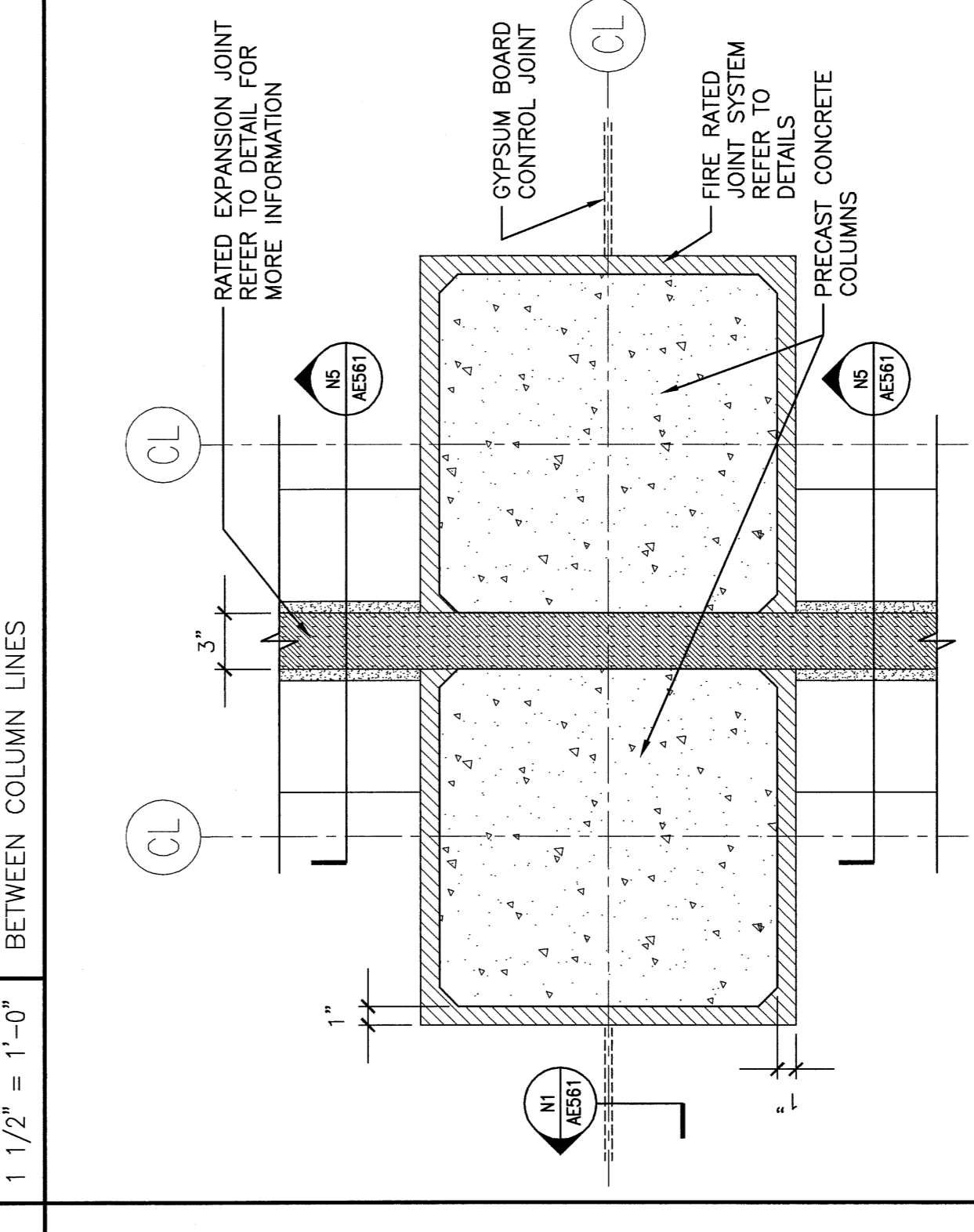
N15
EXPANSION JOINT DETAIL
1 1/2" = 1'-0"



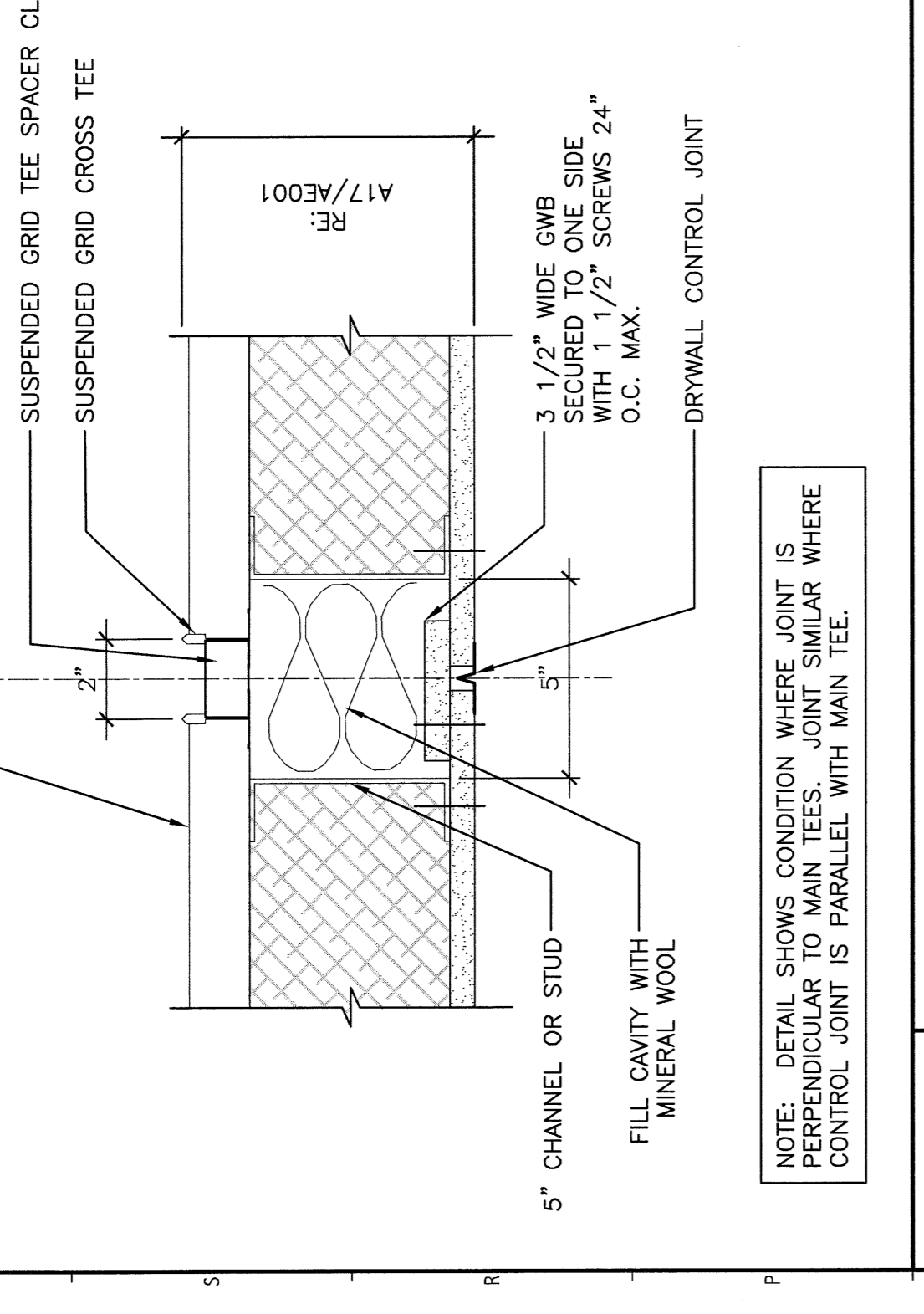
J15
CEILING TRANSITION DETAIL
1 1/2" = 1'-0"



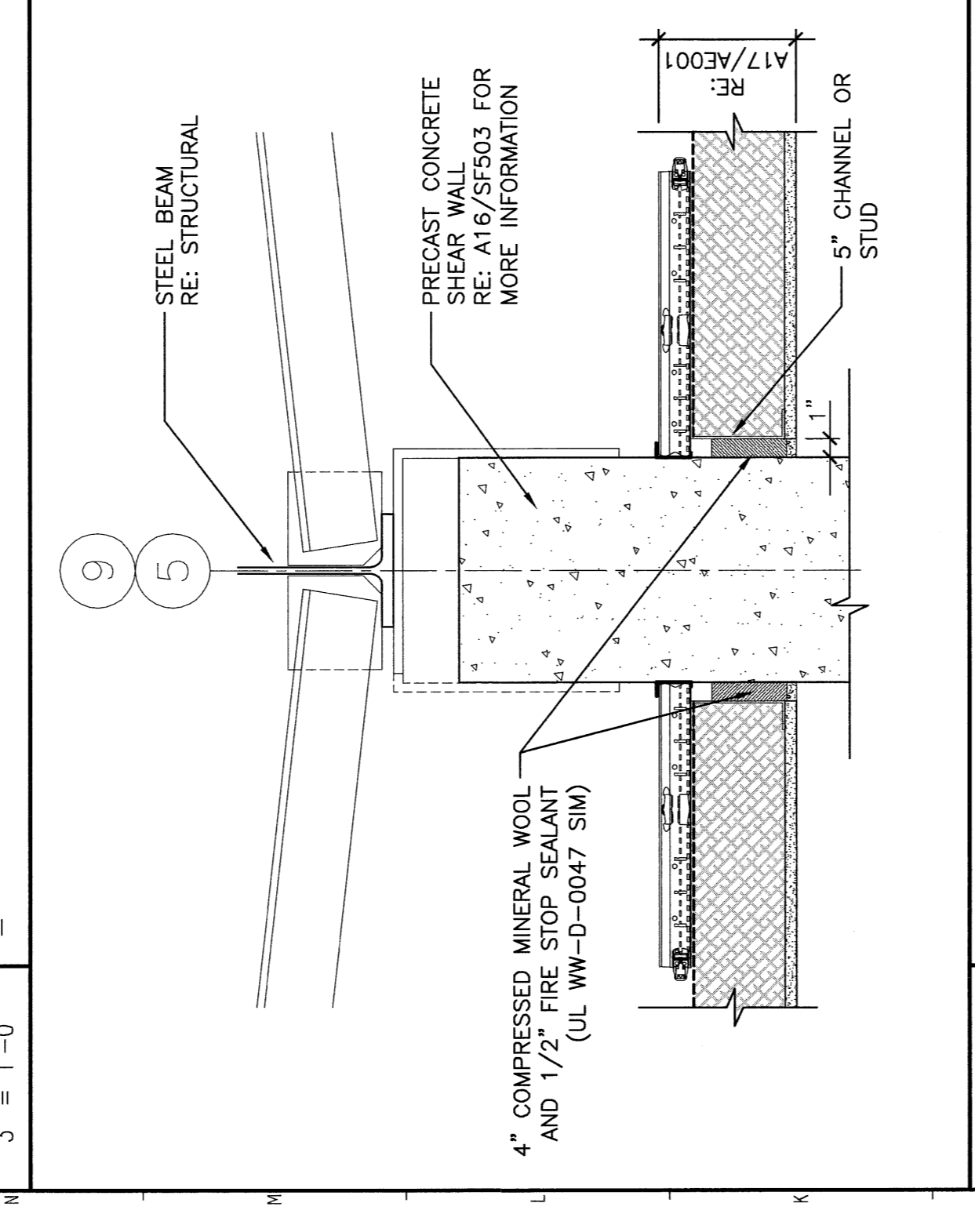
E15
CEILING TRANSITION DETAIL
1 1/2" = 1'-0"



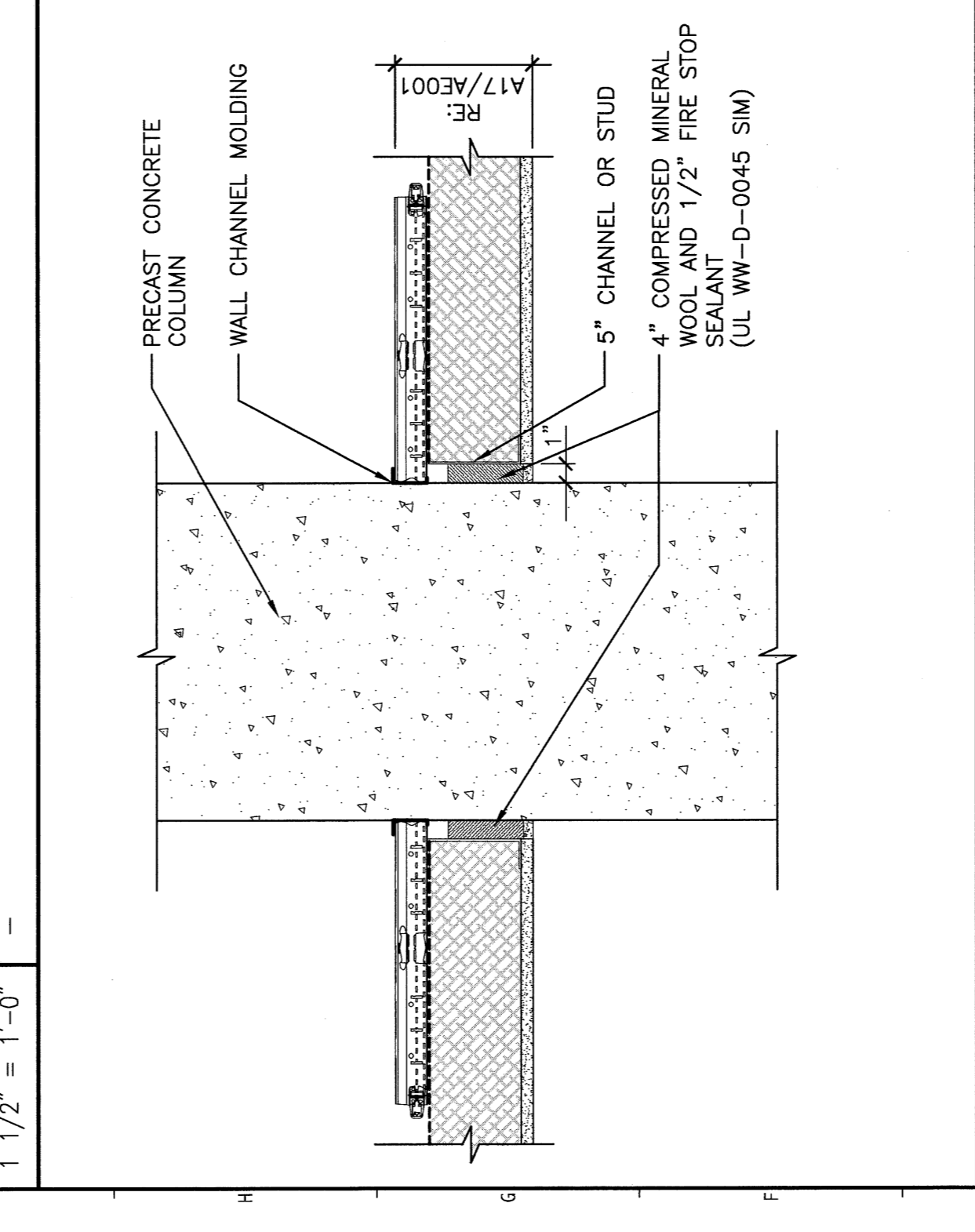
A9
TYPICAL COLUMN PLAN DETAIL
1 1/2" = 1'-0"



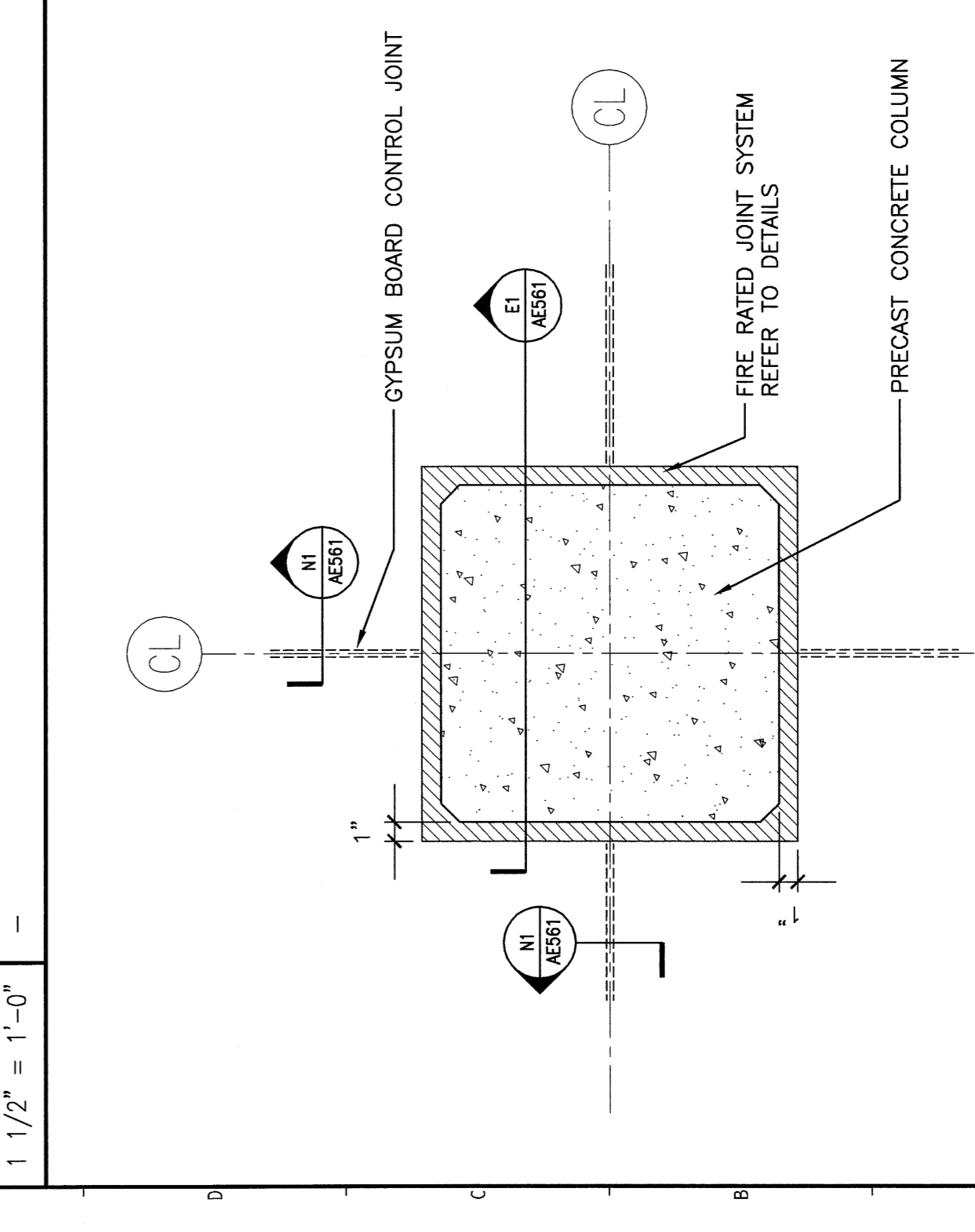
E11
TYPICAL COLUMN SECTION DETAIL
1 1/2" = 1'-0"



A11
TYPICAL COLUMN PLAN DETAIL
1 1/2" = 1'-0"



E17
TYPICAL COLUMN SECTION DETAIL
1 1/2" = 1'-0"



A17
TYPICAL COLUMN PLAN DETAIL
1 1/2" = 1'-0"

SMRTI
ARCHITECTURE
ENGINEERING
PLANNING
INTERIOR DESIGN
COMMISSIONING
PARTICIPATION

MARTIN'S POINT HEALTH CARE
MEDICAL OFFICE BUILDING

SMRTI
14455 S. RAY BLVD. SUITE 100
DENVER, CO 80231
TEL: (303) 752-9300
WWW.SMRTI.COM

PROJECT NAME: MARTIN'S POINT HEALTH CARE MEDICAL OFFICE BUILDING
SHEET TITLE: FIRE RATED FLOOR-CEILING ASSEMBLY PLAN AND SECTION DETAILS
DATE: 08/19/19
SCALE: 1/2" = 1'-0"
PROJECT NUMBER: AE561-08139
SHEET NUMBER: 08139
SHEET TOTAL: AE561-08139
PROJECT NO.: AE561