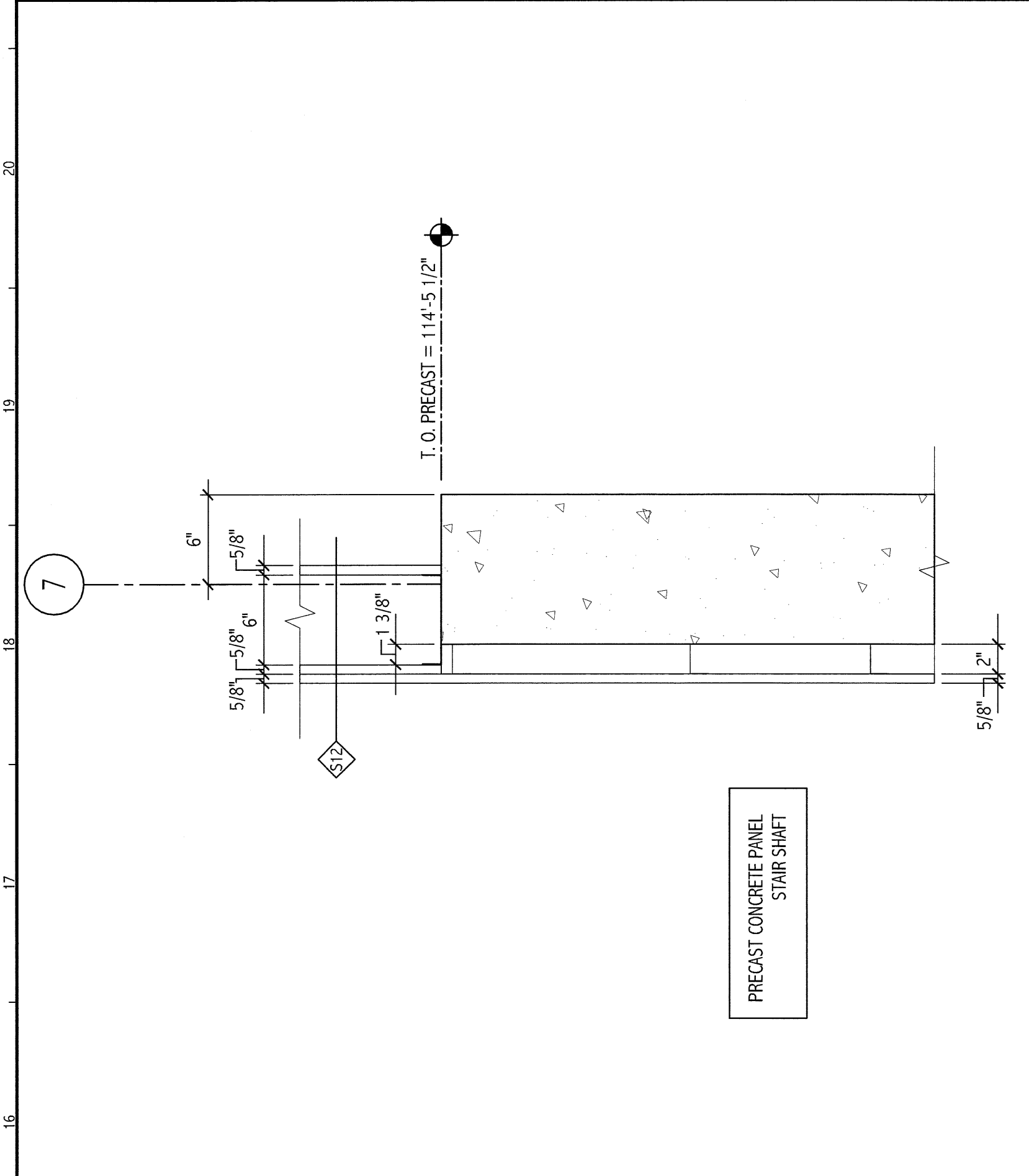
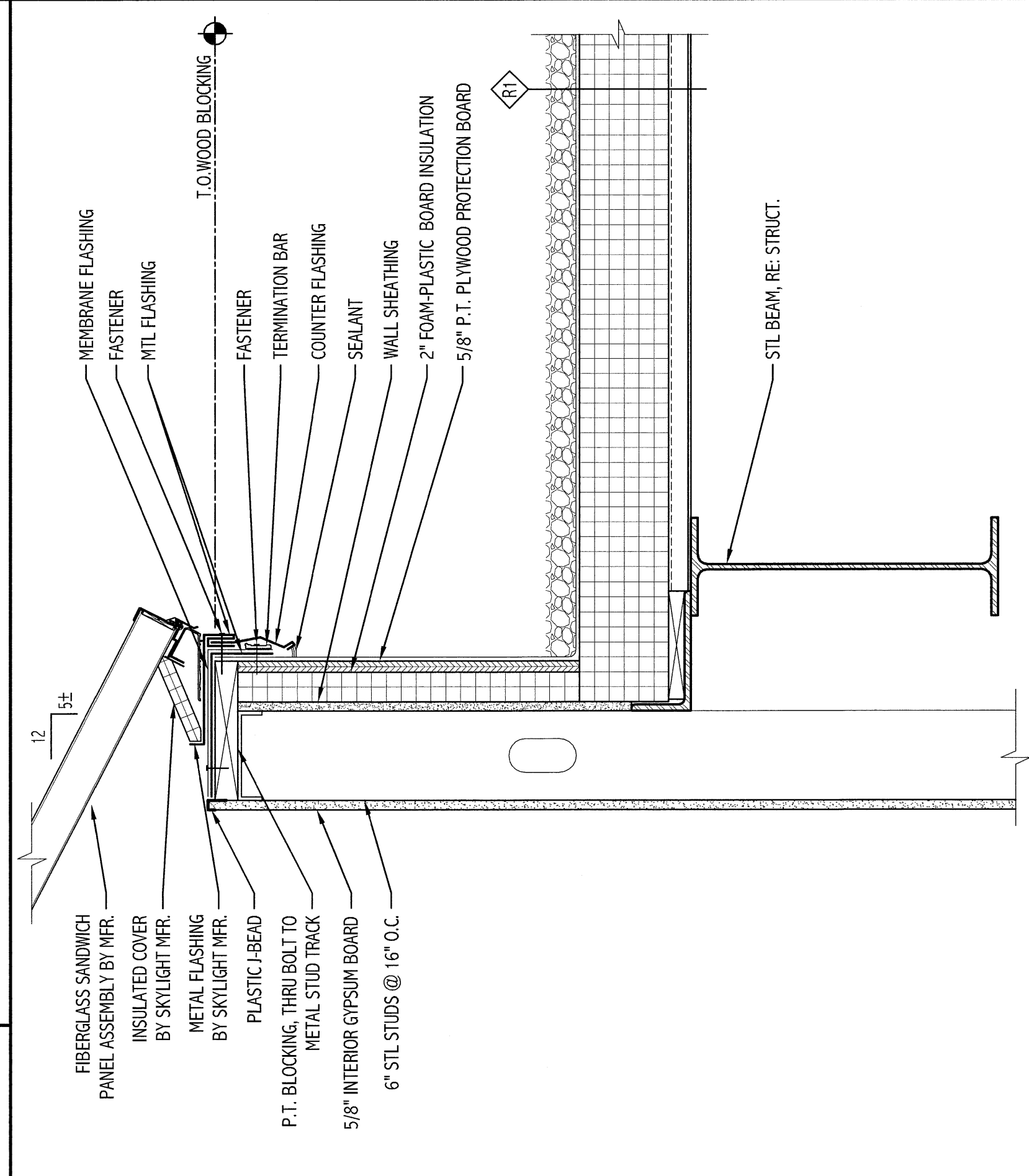


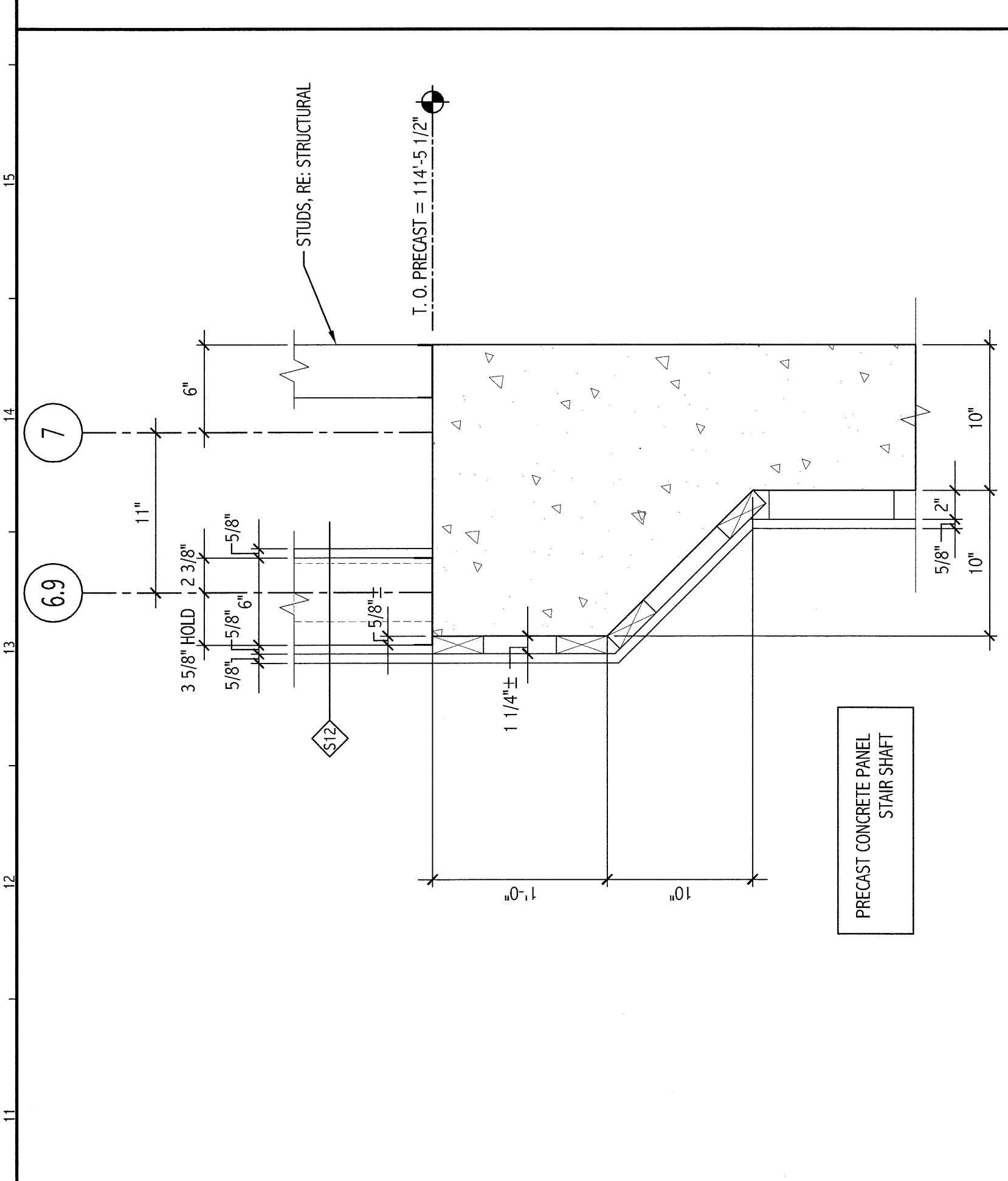
GENERAL NOTES:
1. SEE GRID FOR PROJECT GENERAL NOTES.



M16 SECTION DETAIL
1 1/2" = 1'-0"
AE402



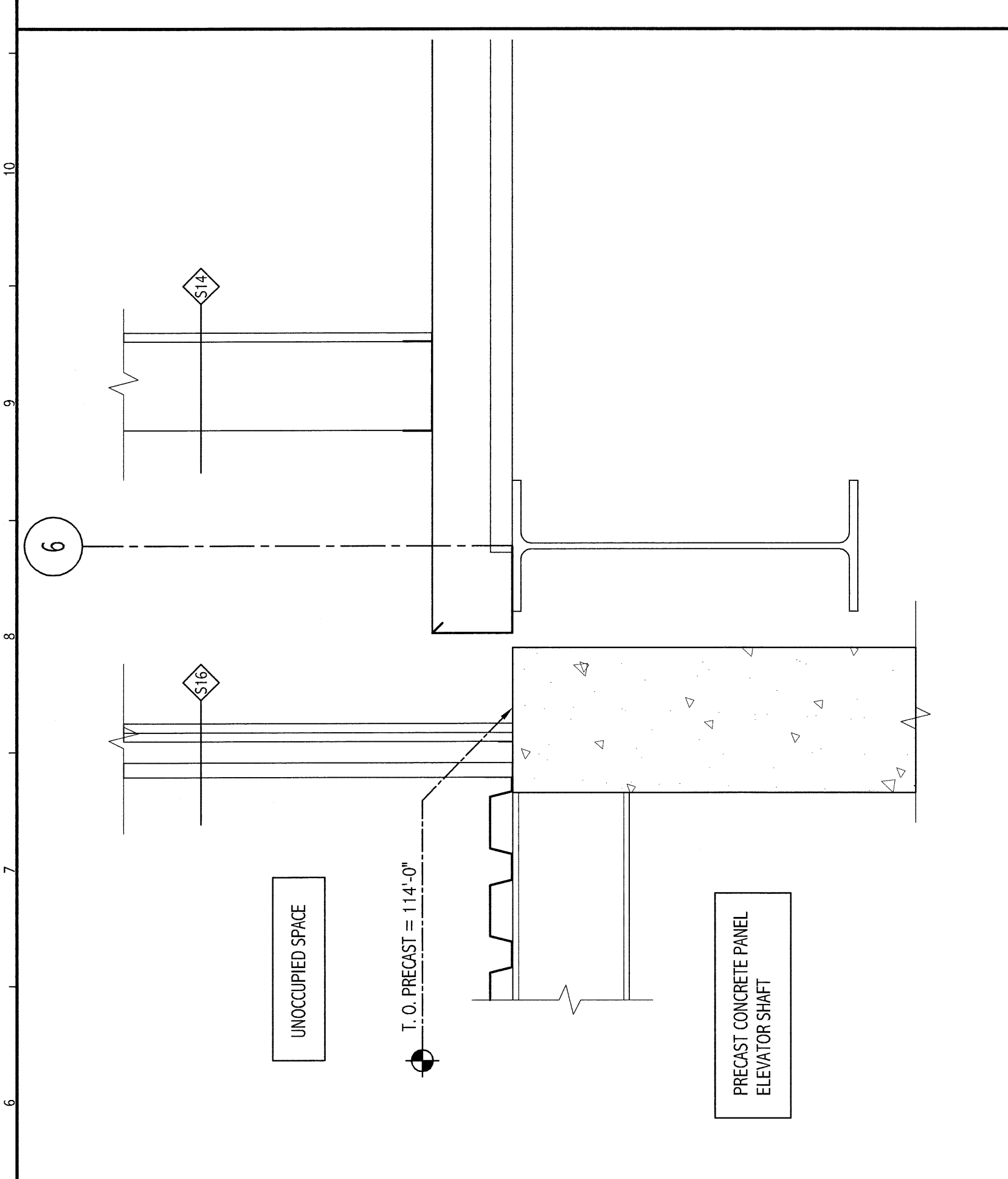
F16 SECTION DETAIL @ SKYLIGHT
1 1/2" = 1'-0"
AE317



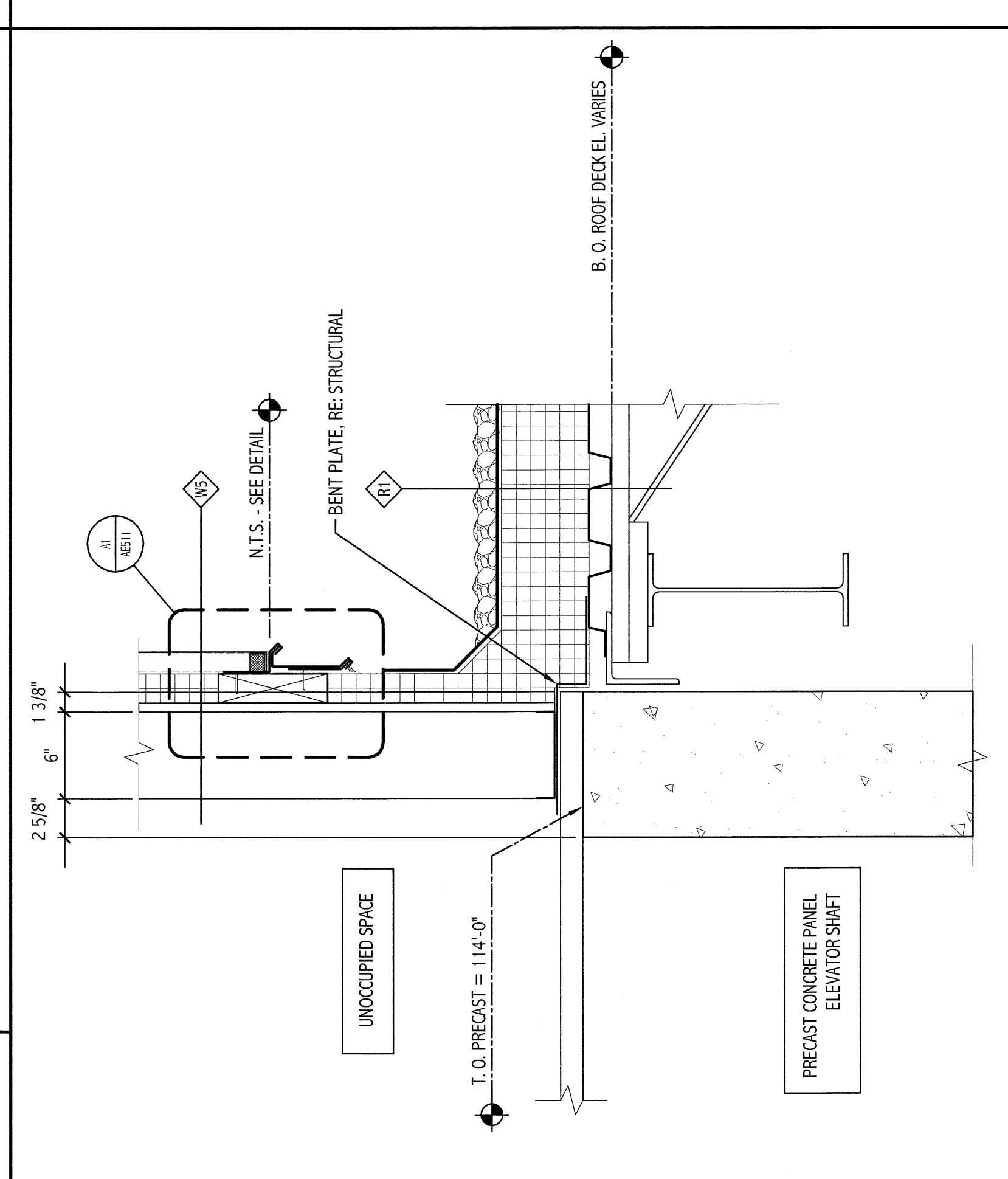
M11 SECTION DETAIL
1 1/2" = 1'-0"
AE402



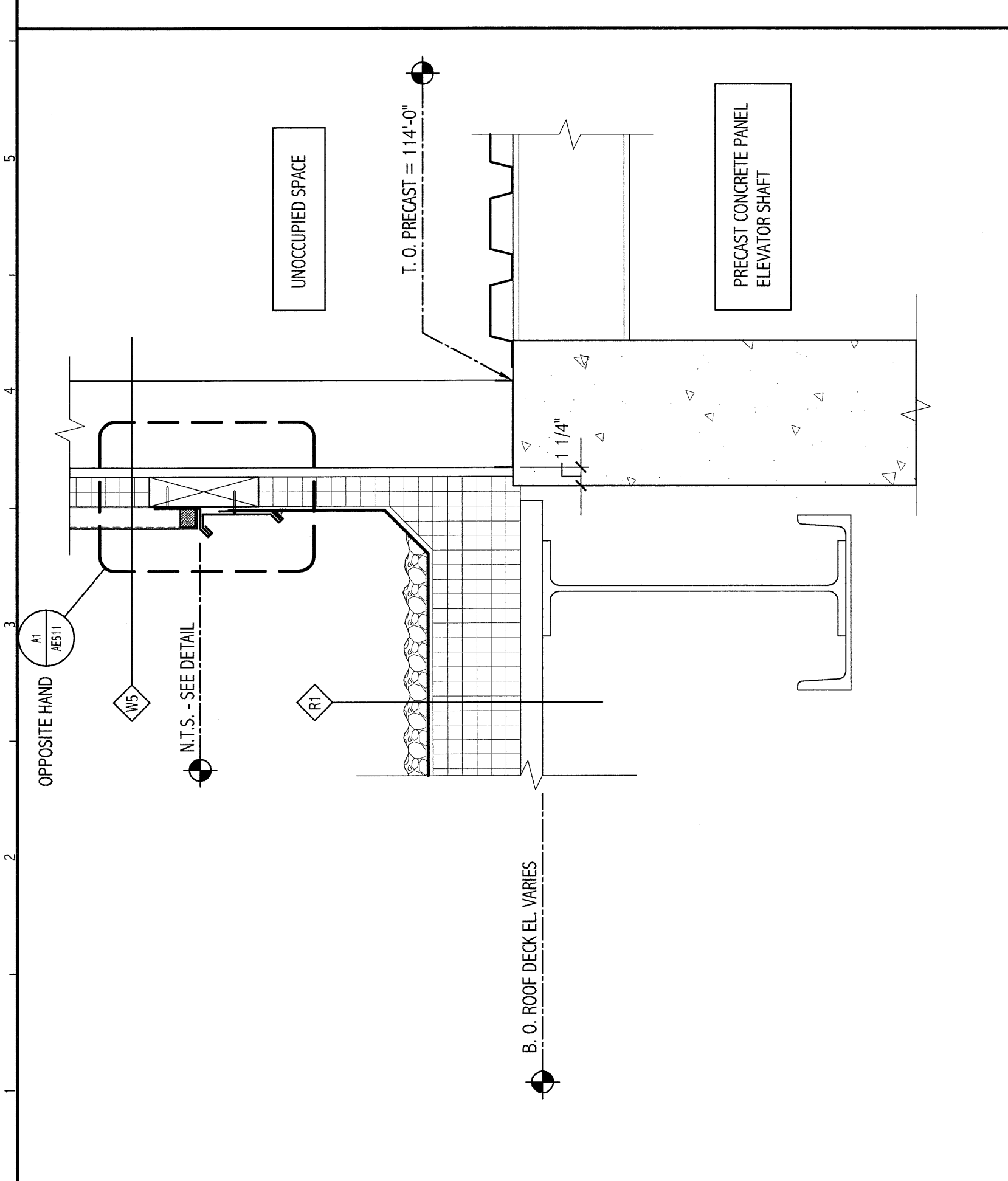
F11 SECTION DETAIL
1 1/2" = 1'-0"
AE402



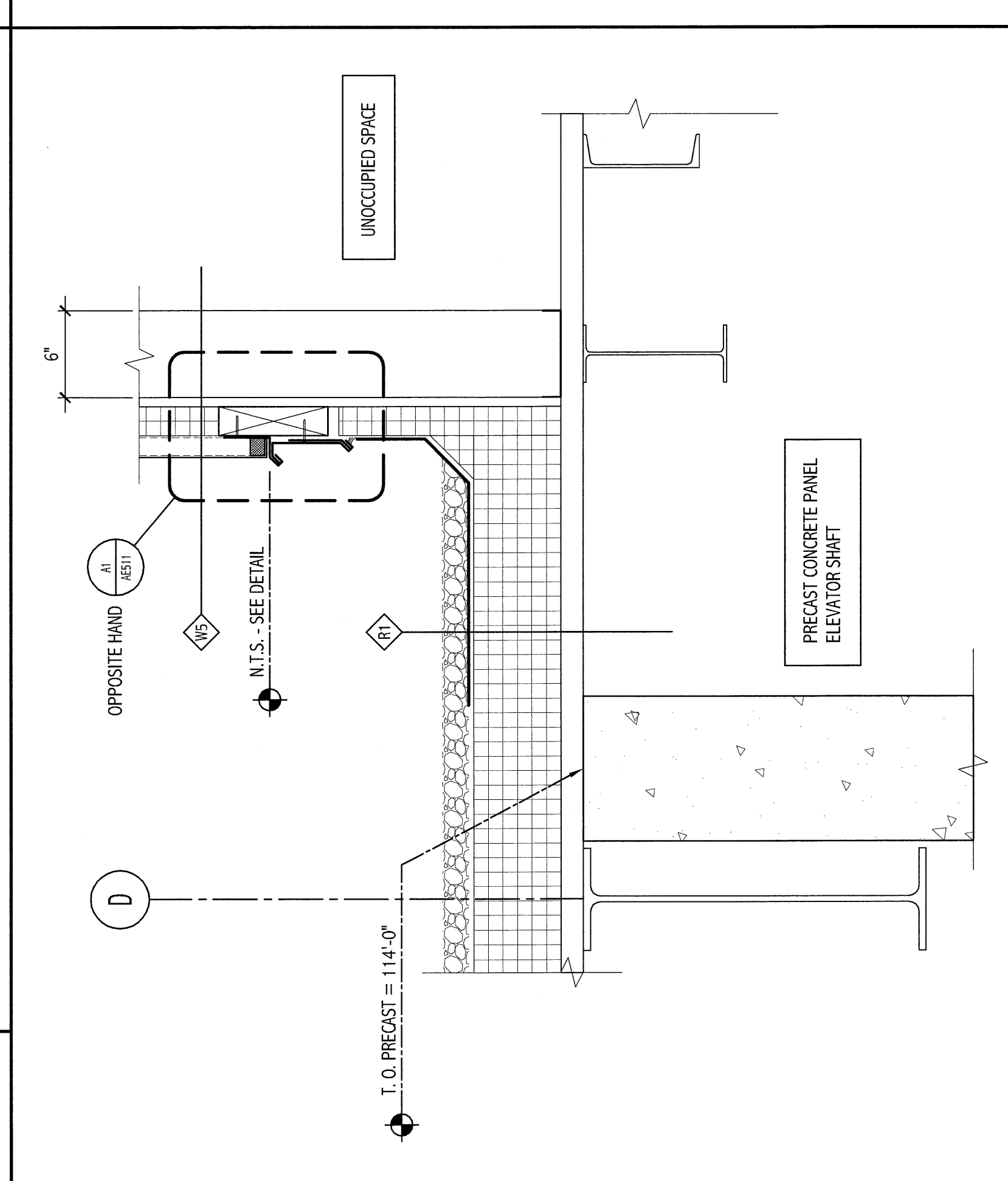
M6 SECTION DETAIL
1 1/2" = 1'-0"
AE402



F6 SECTION DETAIL
1 1/2" = 1'-0"
AE402



M1 SECTION DETAIL
1 1/2" = 1'-0"
AE402



F1 SECTION DETAIL
1 1/2" = 1'-0"
AE402

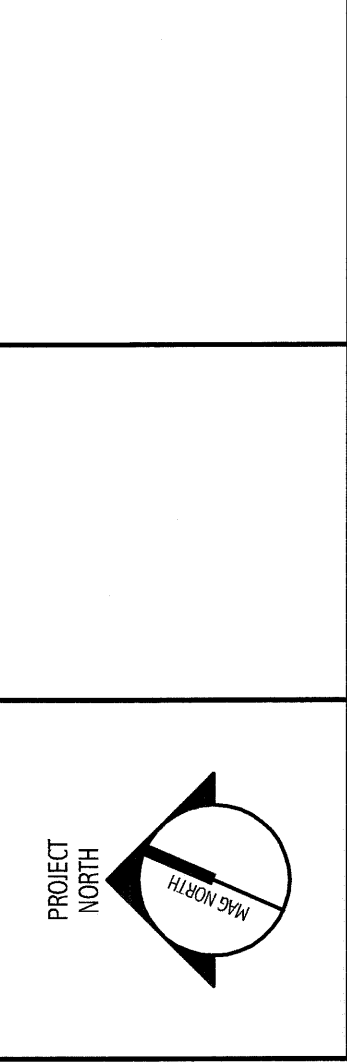
A1 SECTION DETAIL
1 1/2" = 1'-0"
AE402

A6 SECTION DETAIL
1 1/2" = 1'-0"
AE402

A11 SECTION DETAIL
1 1/2" = 1'-0"
AE402

REV.	DESCRIPTION	DATE

ISSUED FOR G.M.P. & PERMITTING
4-3-09



144 First Street, Suite 100
Portland, Oregon 97204
Tel: (503) 772-2446
Fax: (503) 772-1070
www.smrri.com

SMRRI
ARCHITECTURE
ENGINEERING
PLANNING
INTERIOR DESIGN
COMMISSIONING

MARTIN'S POINT HEALTH CARE
MEDICAL OFFICE BUILDING
PORTLAND, OREGON

SECTIONS AND DETAILS

SHEET TITLE	AS NOTED	DATE
PROJECT NUMBER	SLB	GRAPHIC SCALE
PROJECT MANAGER	TONY CHAN	1" = 1'-0"
REV. APPR. BY	SLB	
DATE OF RECORD	SLB	SHEET No.
SMRRI JOB FILE	AE512-08139	08139
PROJECT No.	08139	

AE512
PROGRESS PRINT