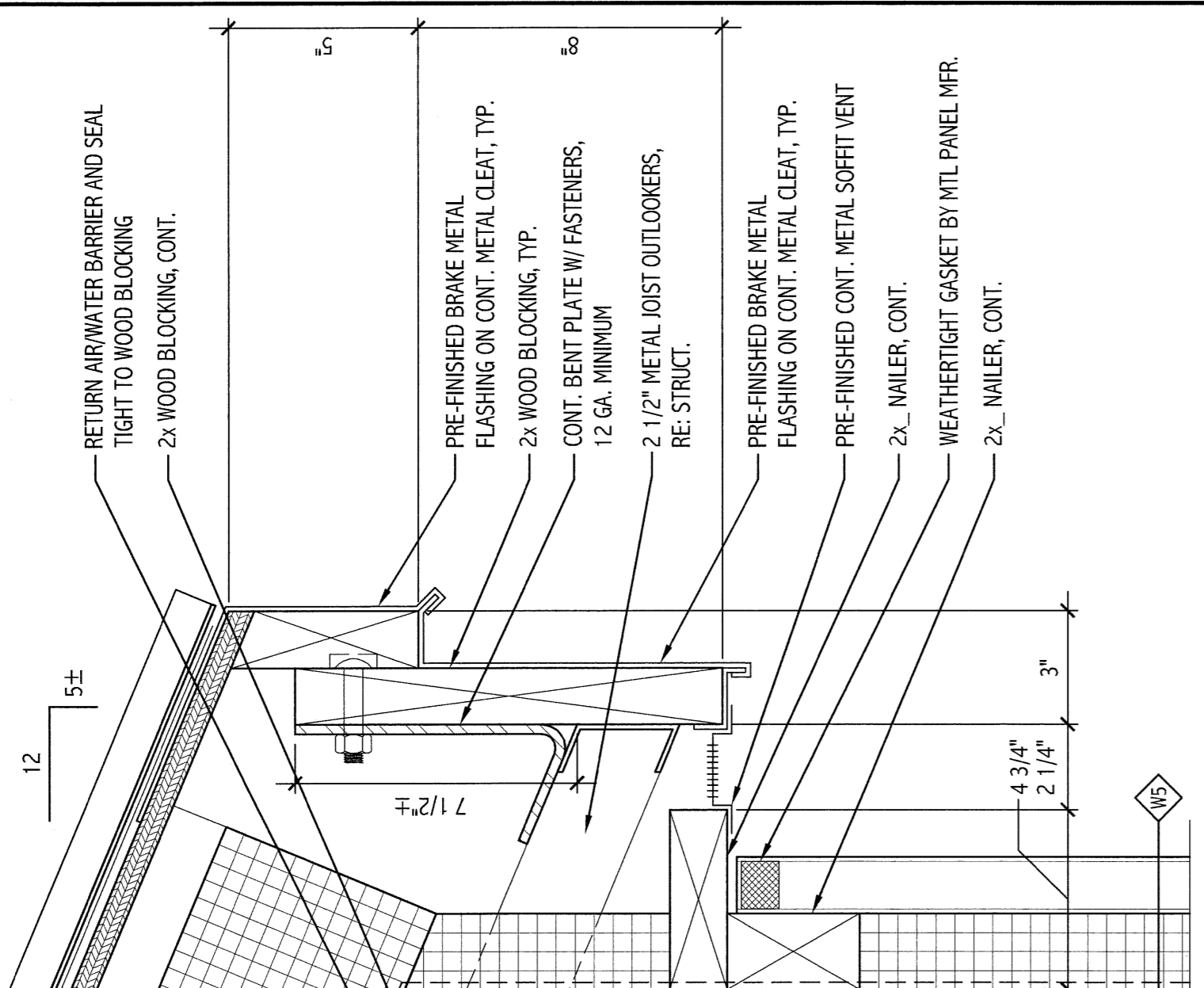


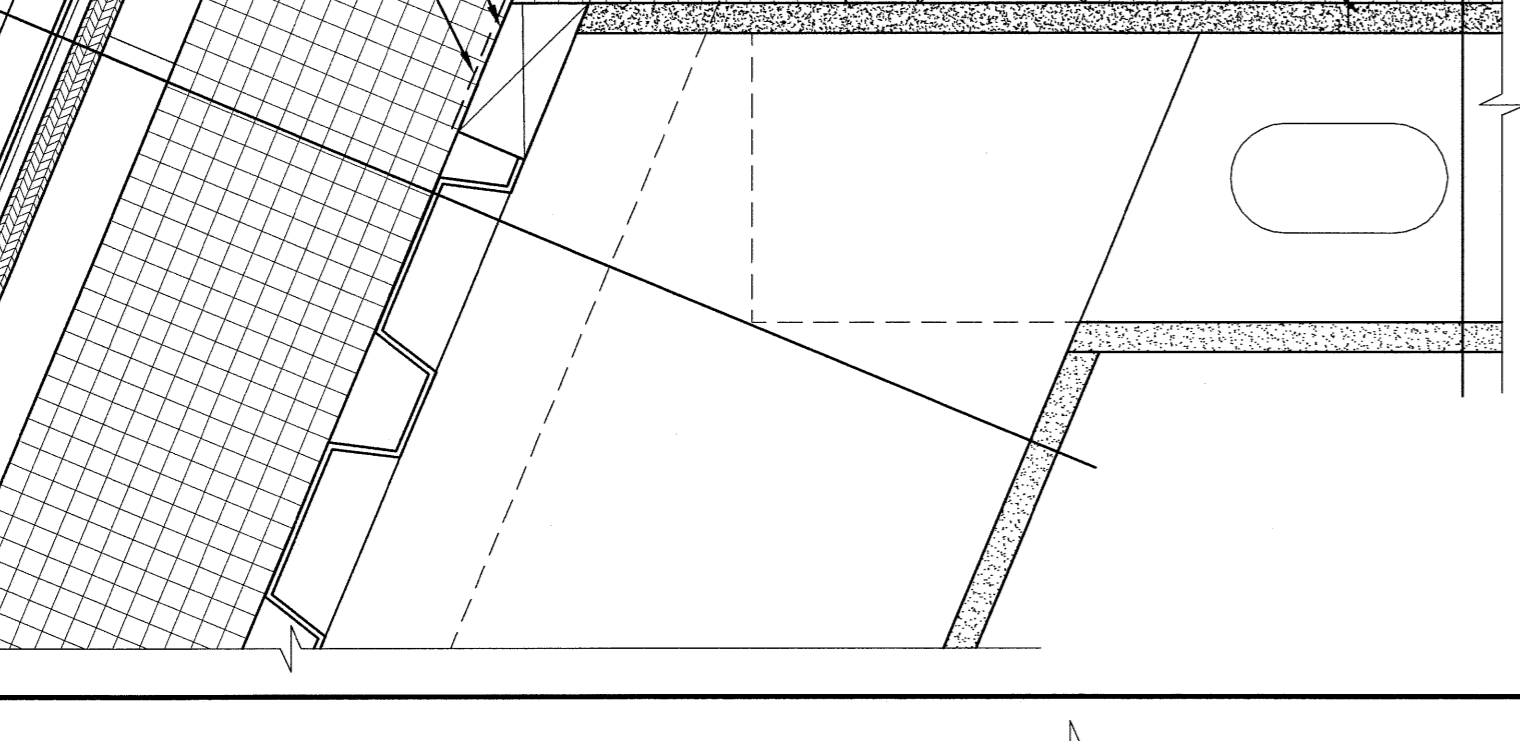
GENERAL NOTES:
1. SEE G101 FOR PROJECT GENERAL NOTES.



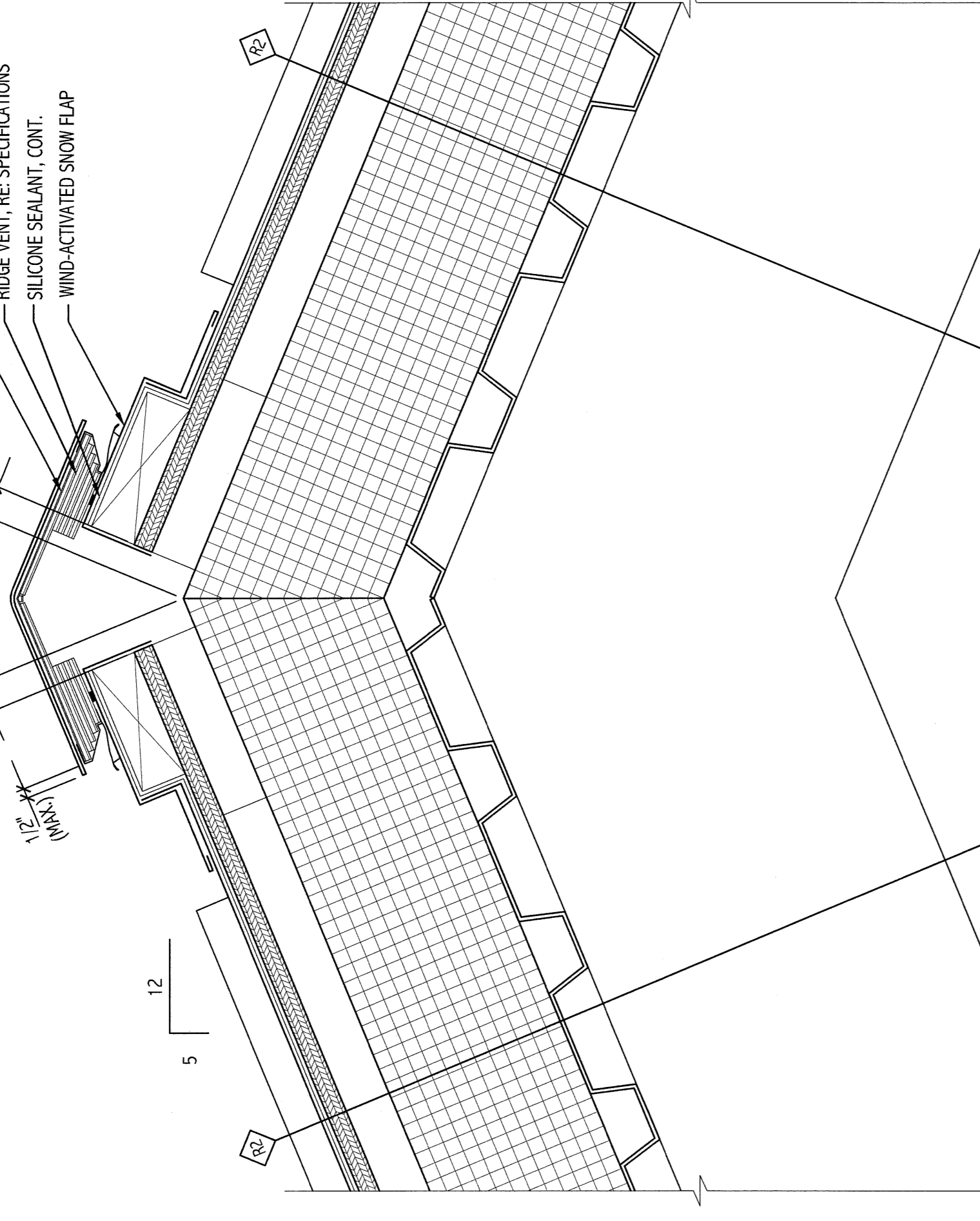
M1 SECTION DETAILS
AE511
3" = 1'-0"



M6 SECTION DETAIL
AE316
3" = 1'-0"



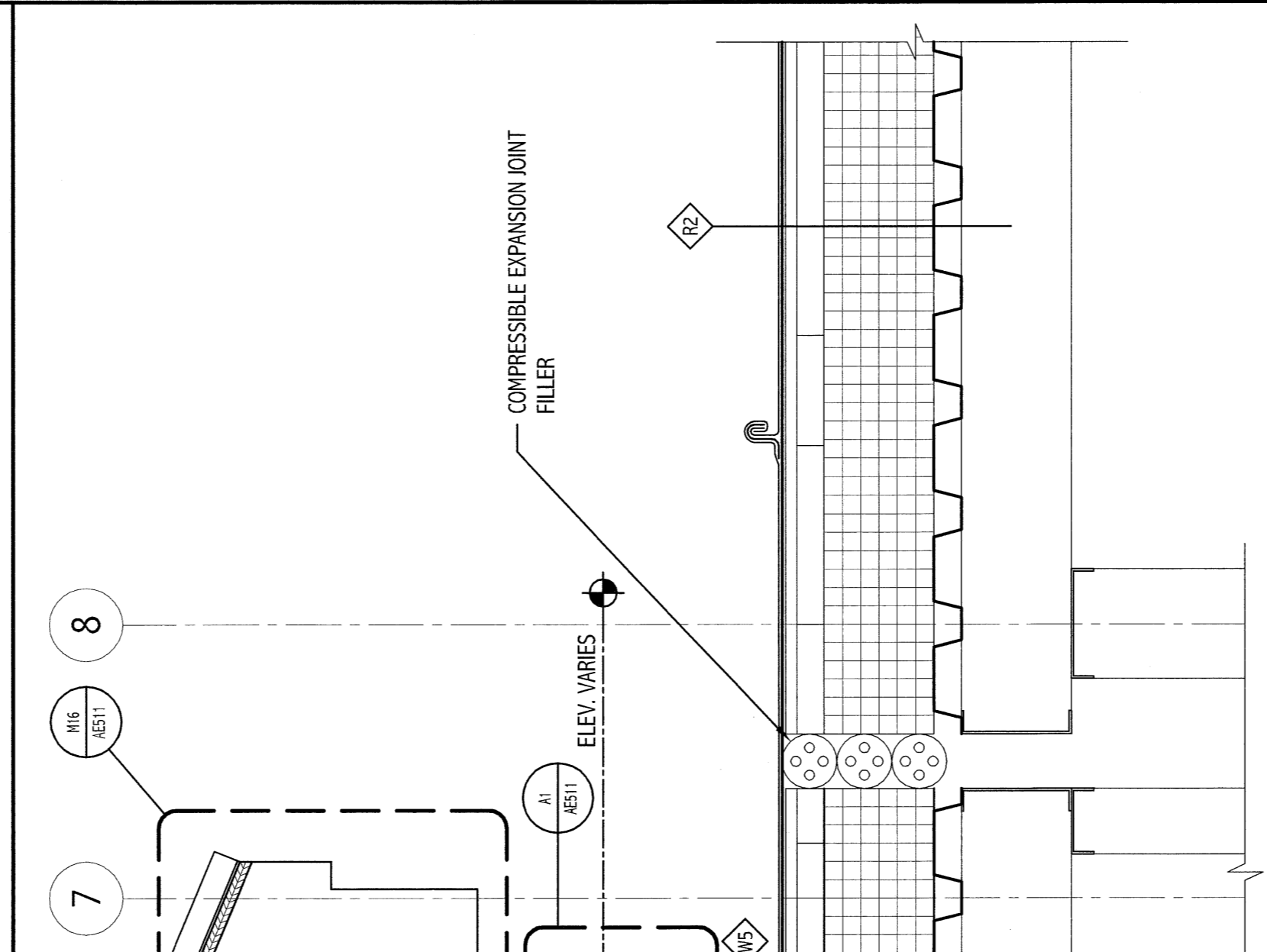
M11 SECTION DETAIL
AE316
3" = 1'-0"



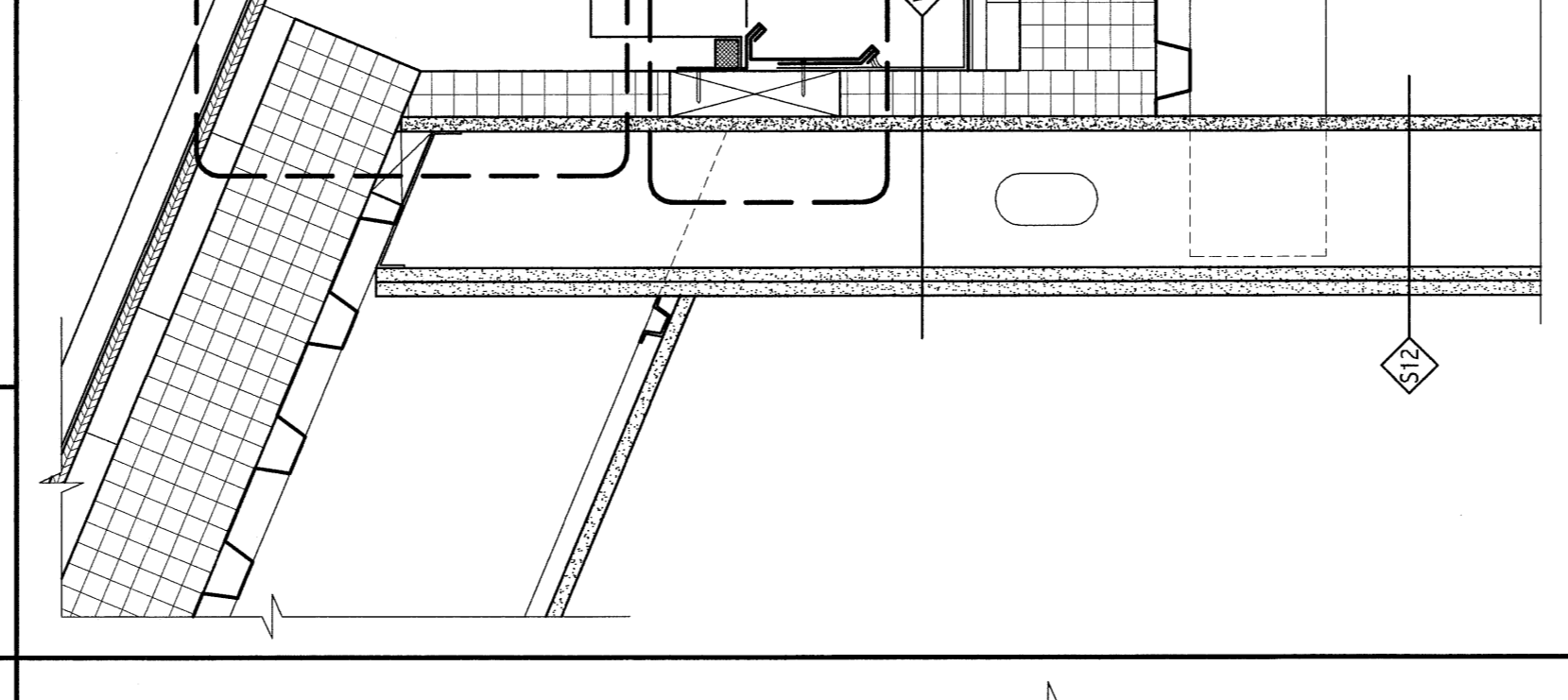
M16 SECTION DETAIL
AE511
3" = 1'-0"



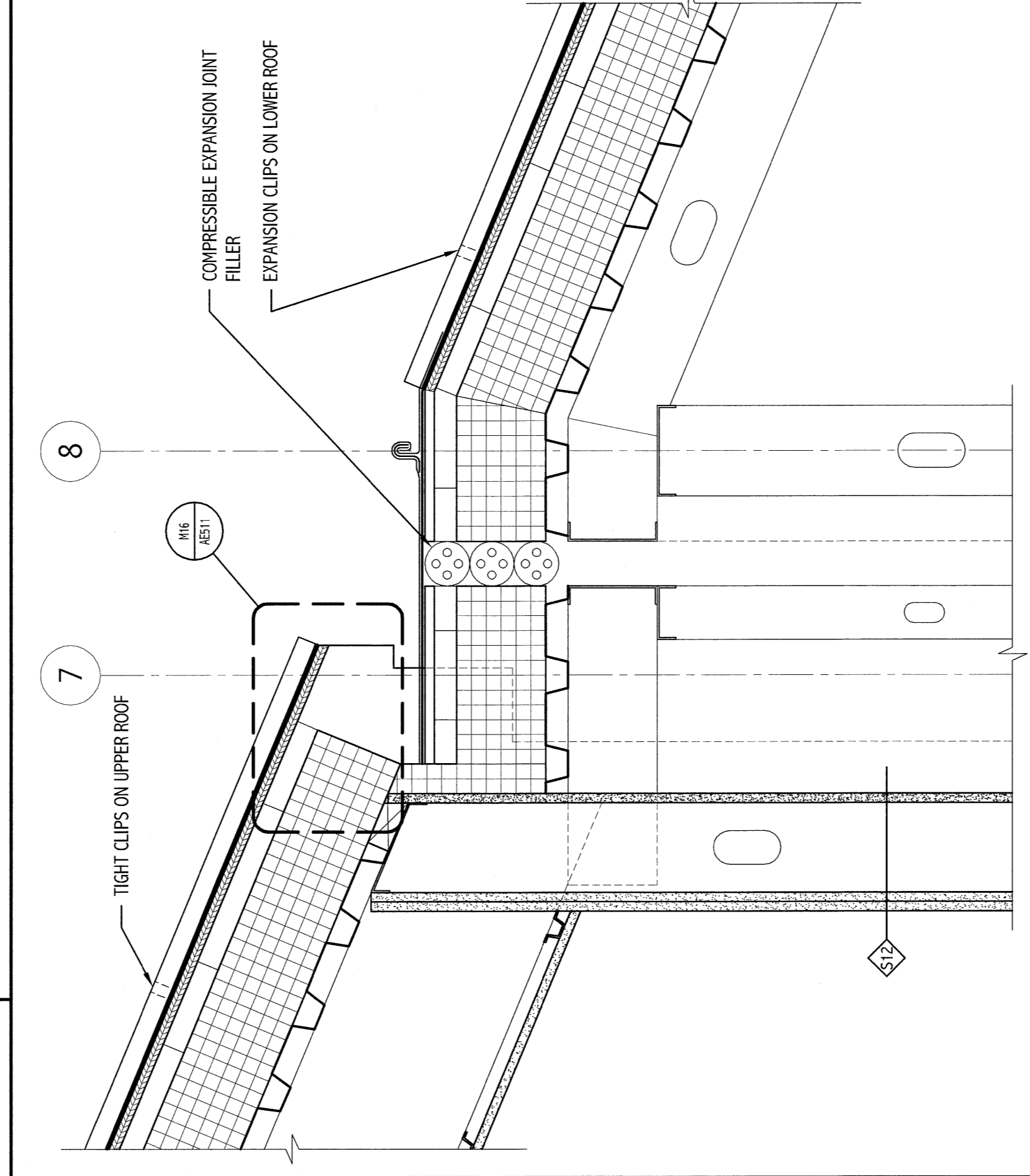
F1 SECTION DETAIL
AE316, AE411
1 1/2" = 1'-0"



F16 SECTION DETAIL
AE316
1 1/2" = 1'-0"



F11 SECTION DETAIL
AE316
1 1/2" = 1'-0"



F6 SECTION DETAIL
AE316
1 1/2" = 1'-0"

ISSUED FOR G.M.P. & PERMITTING
4-3-09

PROJECT: MARTIN
CURRENT ISSUE STATUS: PERMITTING

DATE: _____
DESCRIPTION: _____
DATE: _____

144 First Street, Suite 1000
Portland, OR 97204
Tel: (503) 772-3300
Fax: (503) 772-0770
www.smrta.com

SMRTA
ARCHITECTURE
ENGINEERING
PLANNING
INTERIOR DESIGN
COMMISSIONING

MARTIN'S POINT HEALTH CARE
MEDICAL OFFICE BUILDING
PORTLAND, OREGON

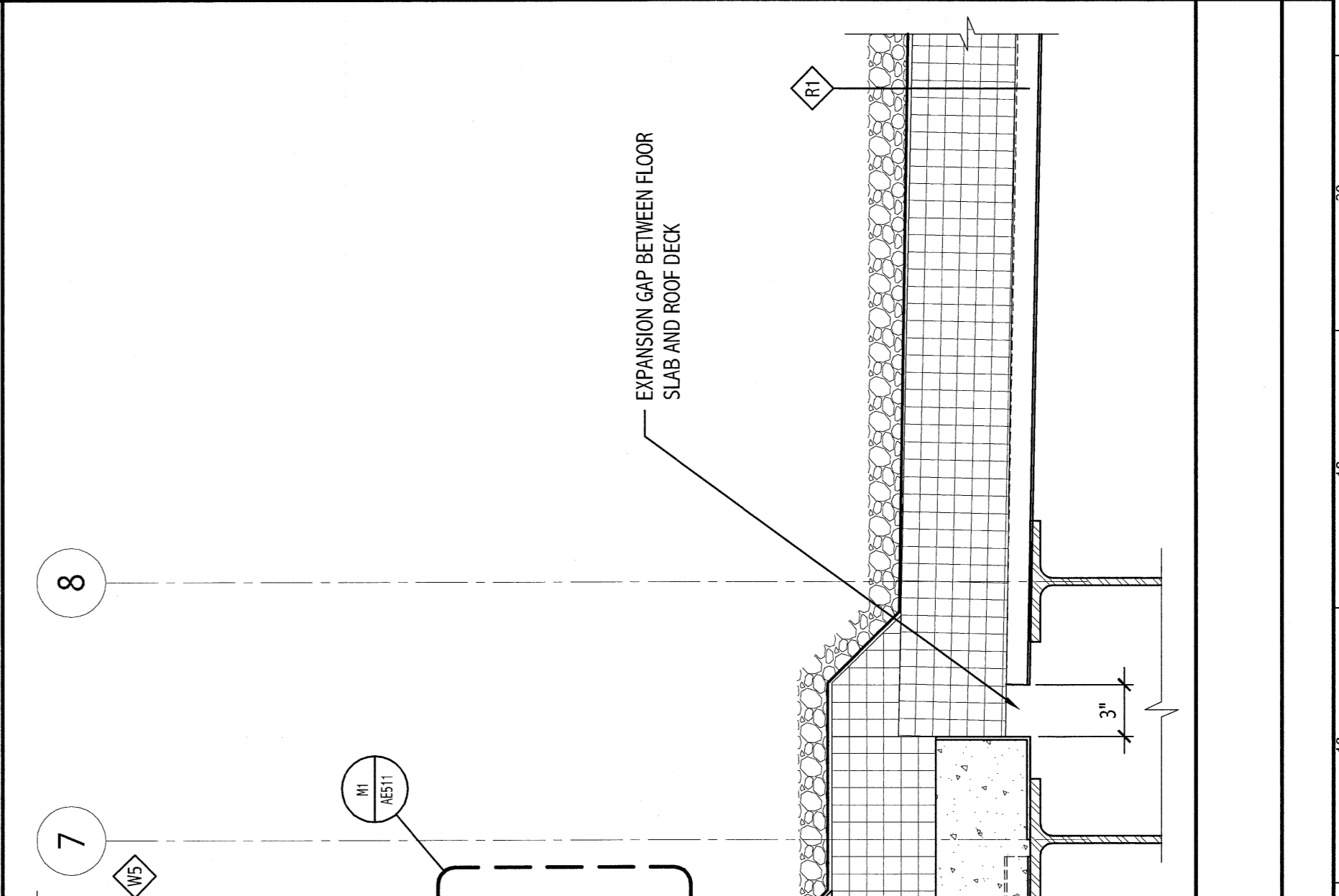
SECTIONS AND DETAILS

SECTION TITLE: _____
DATE: _____
AS NOTED: _____
SUB: _____
GRAPHIC SCALE: _____

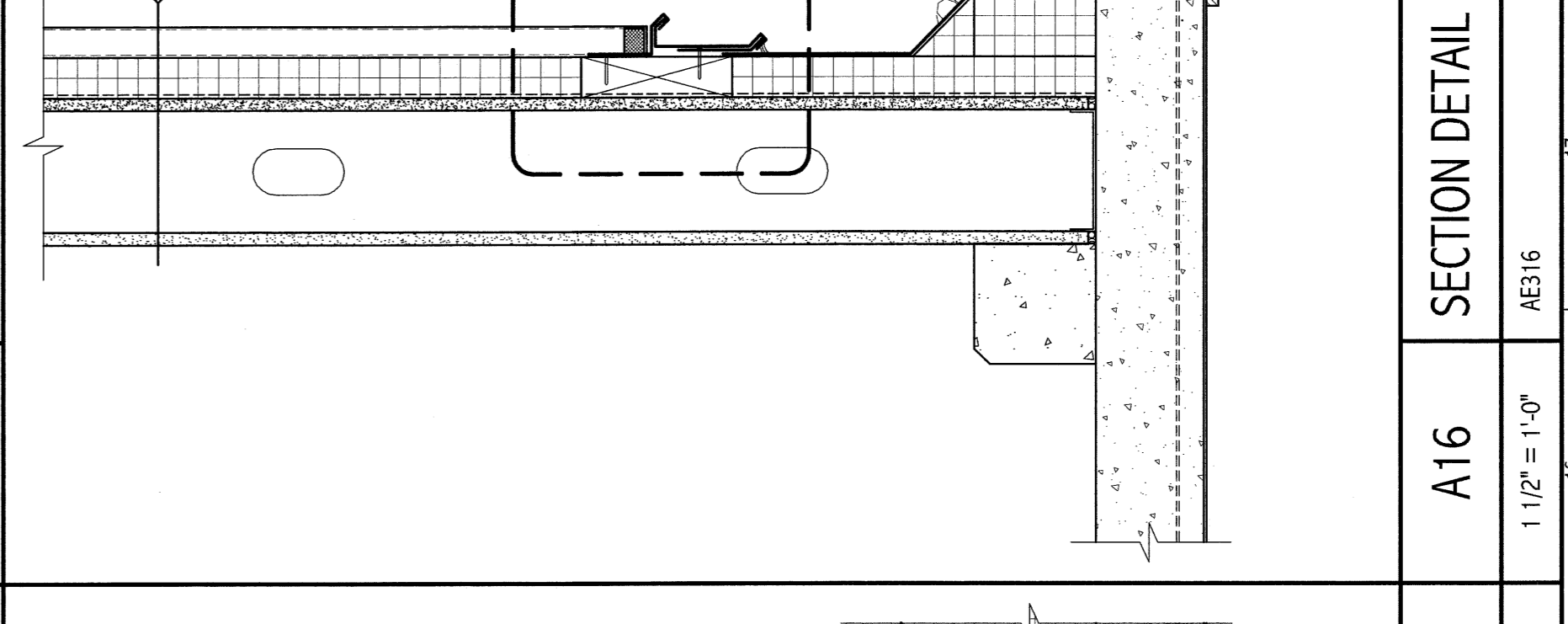
PROJECT MANAGER: _____
JOB CAPTAIN: _____
TOWN: _____

SHEET No. **AE511**
SHEET No. _____
SHEET No. _____

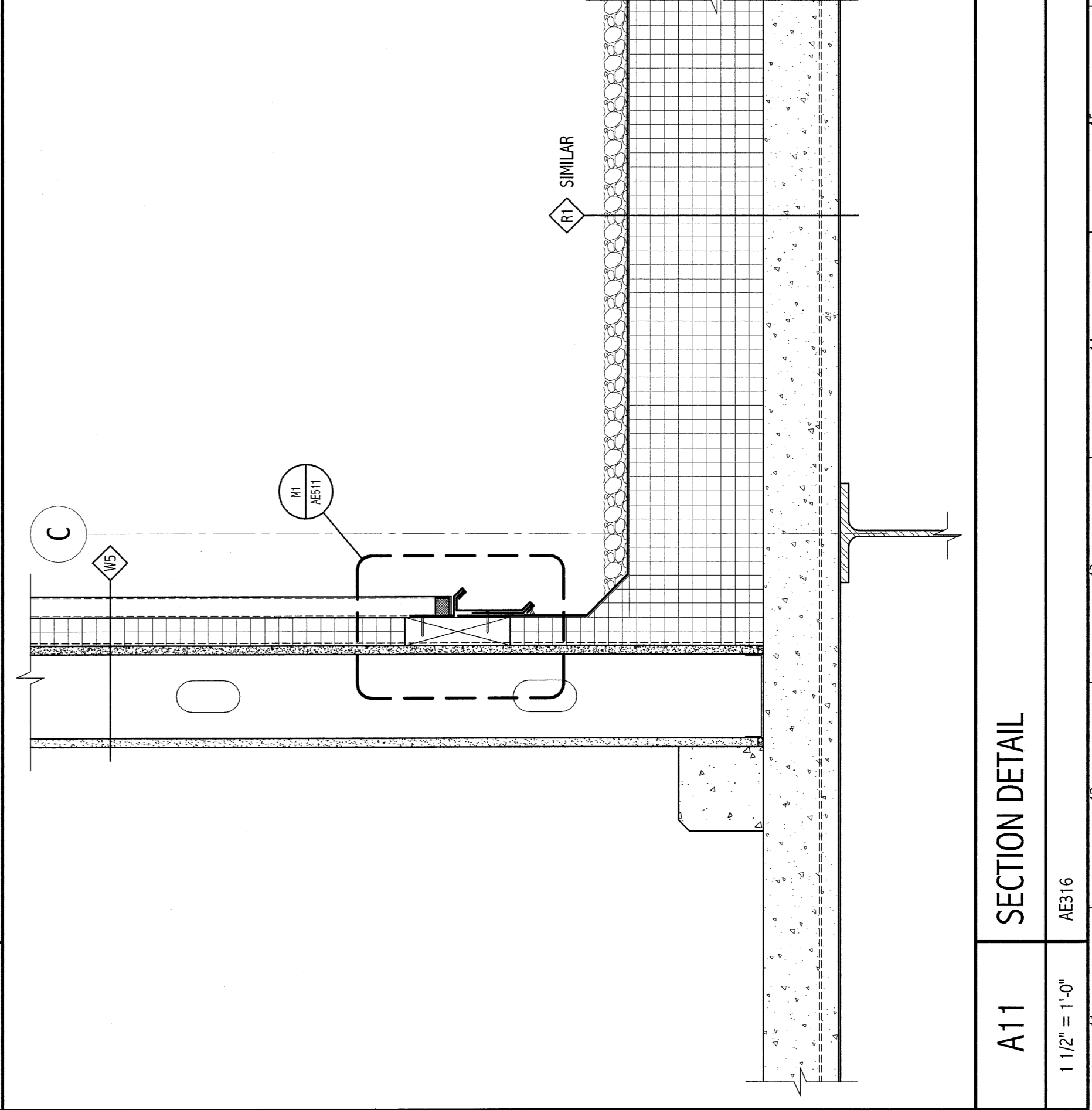
SMRTA JOB FILE: AE511-08139
PROJECT No. 08139



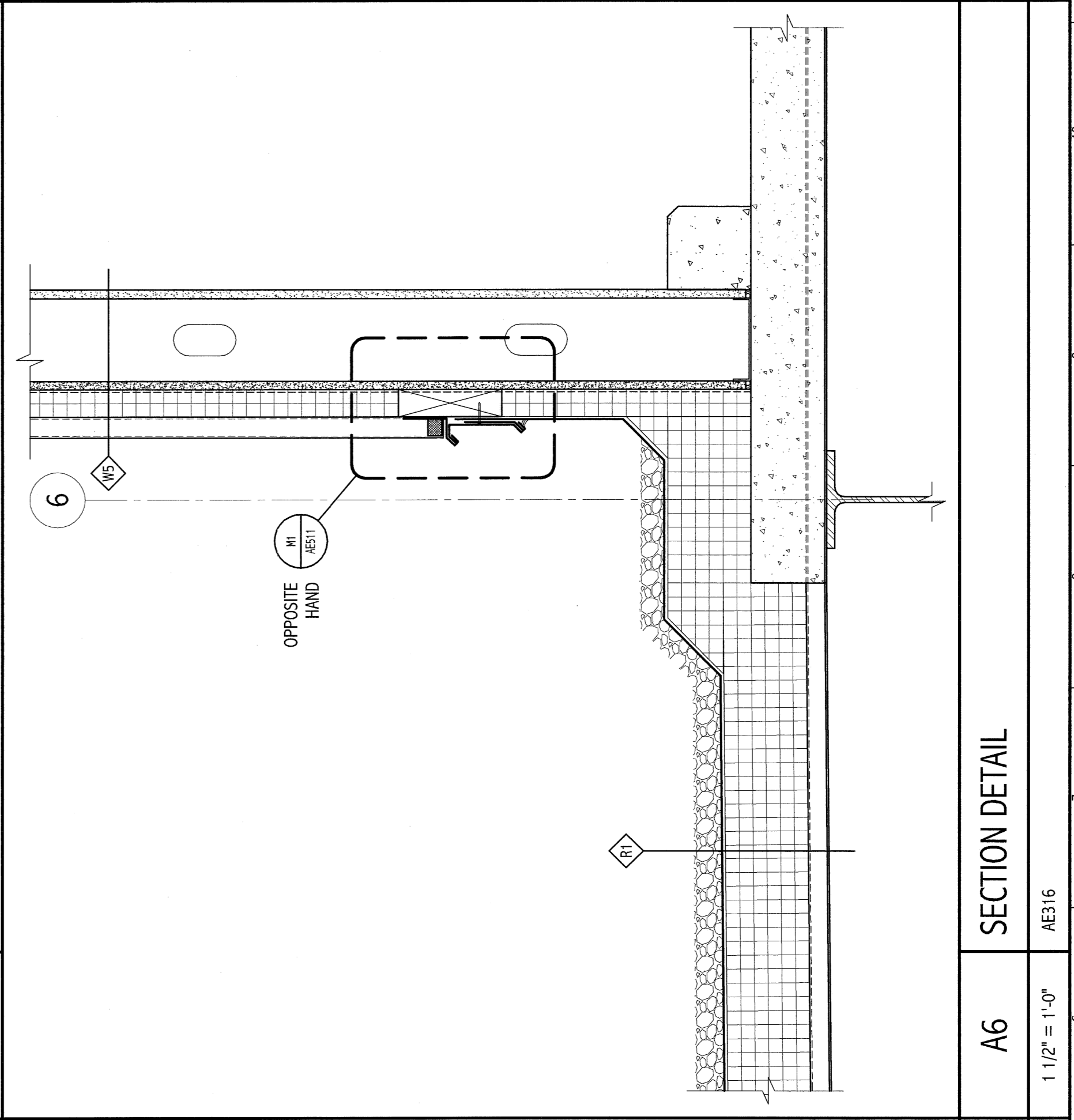
A16 SECTION DETAIL
AE316
1 1/2" = 1'-0"



A11 SECTION DETAIL
AE316
1 1/2" = 1'-0"



A6 SECTION DETAIL
AE316
1 1/2" = 1'-0"



A1 SECTION DETAIL
AE316
1 1/2" = 1'-0"

PROGRESS PRINT