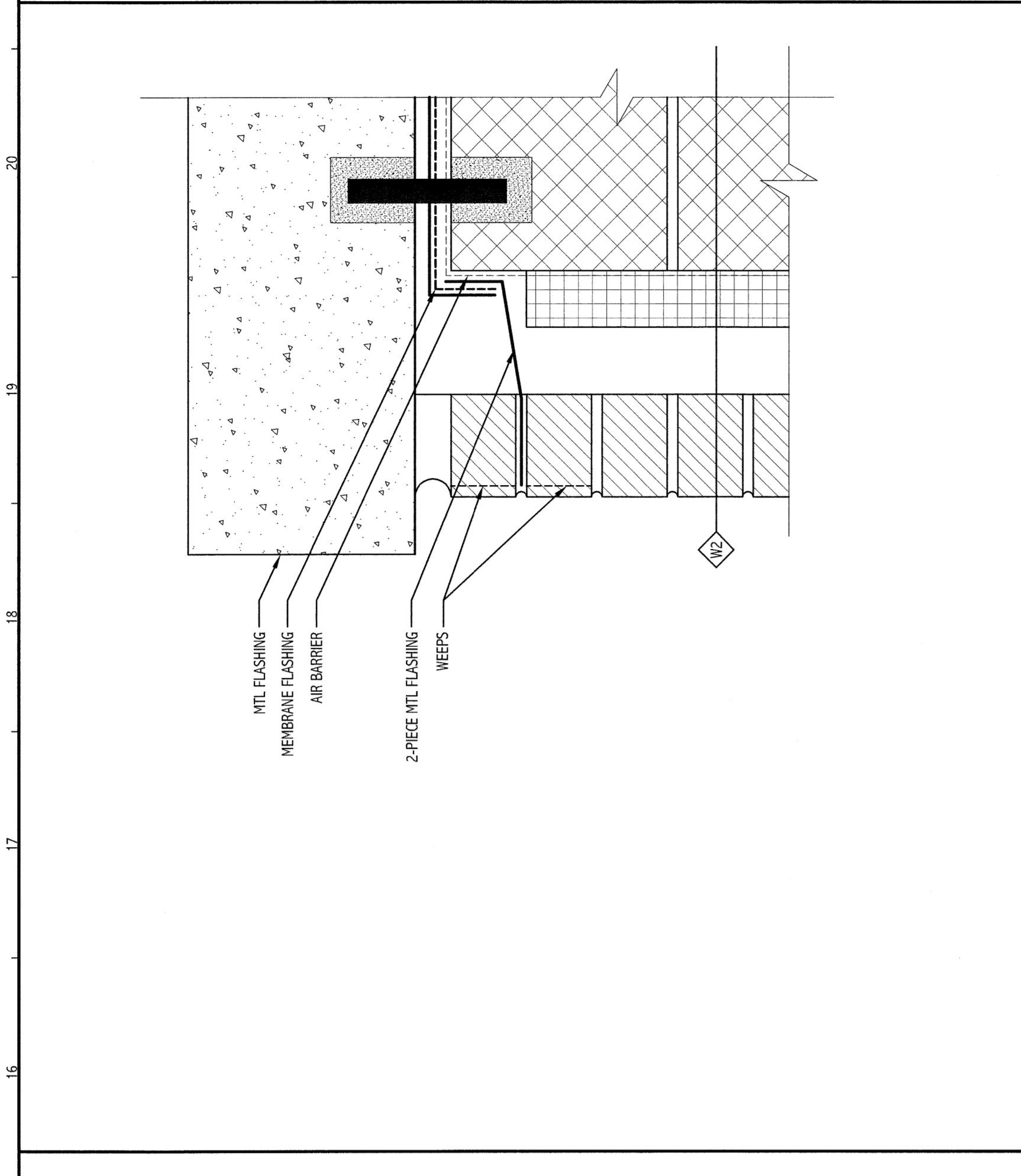
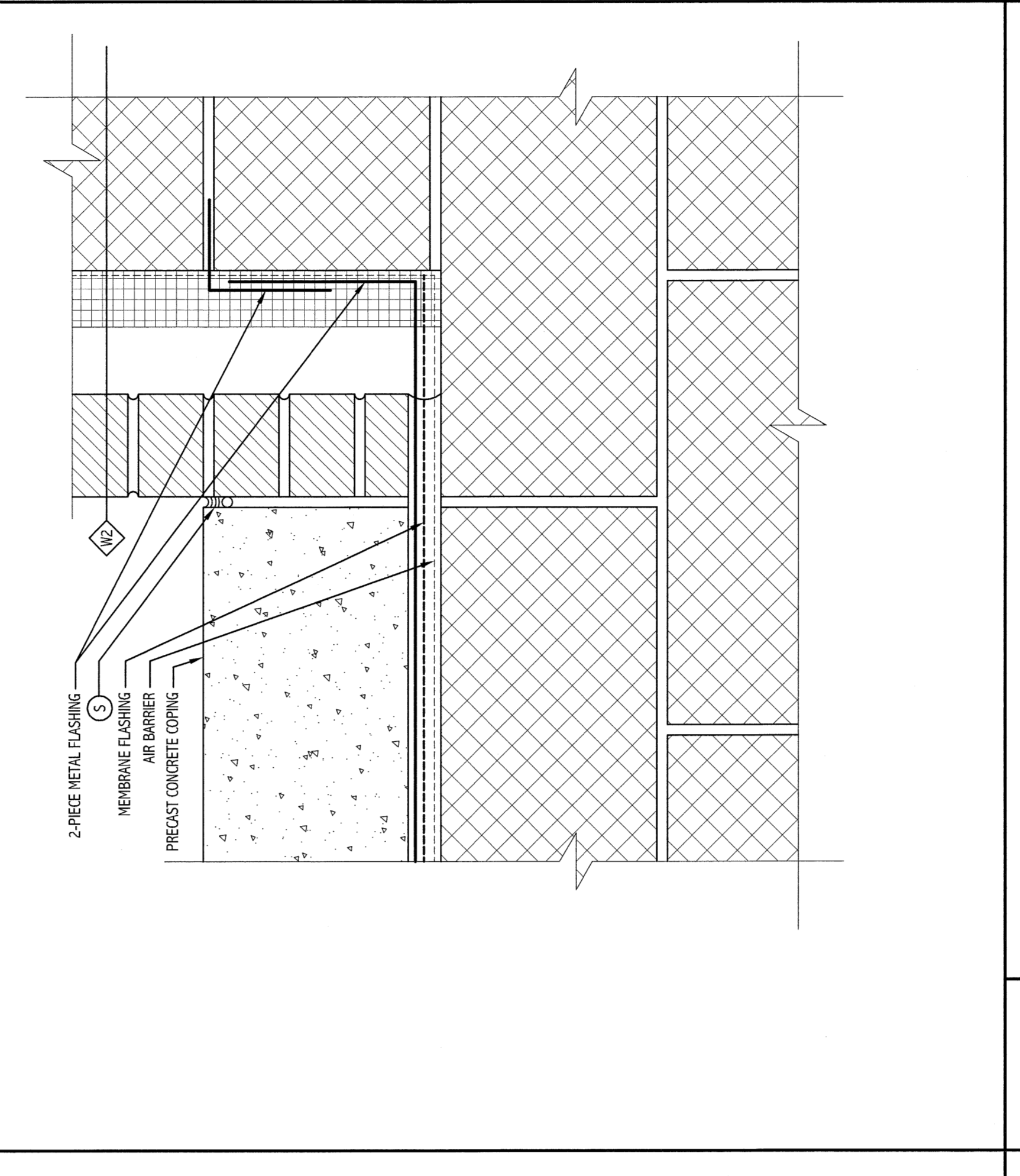


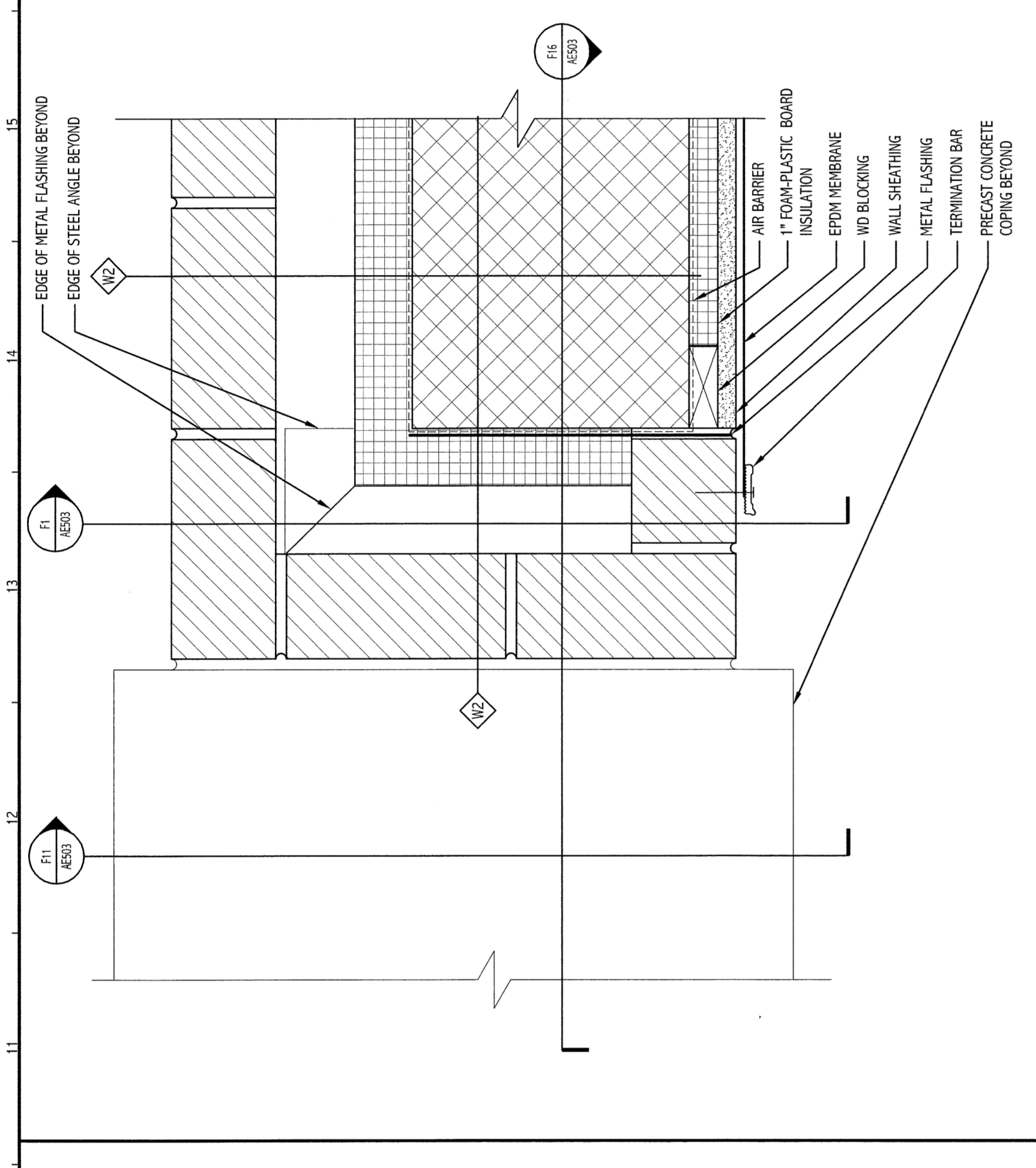
GENERAL NOTES:  
1. SEE G001 FOR PROJECT GENERAL NOTES.



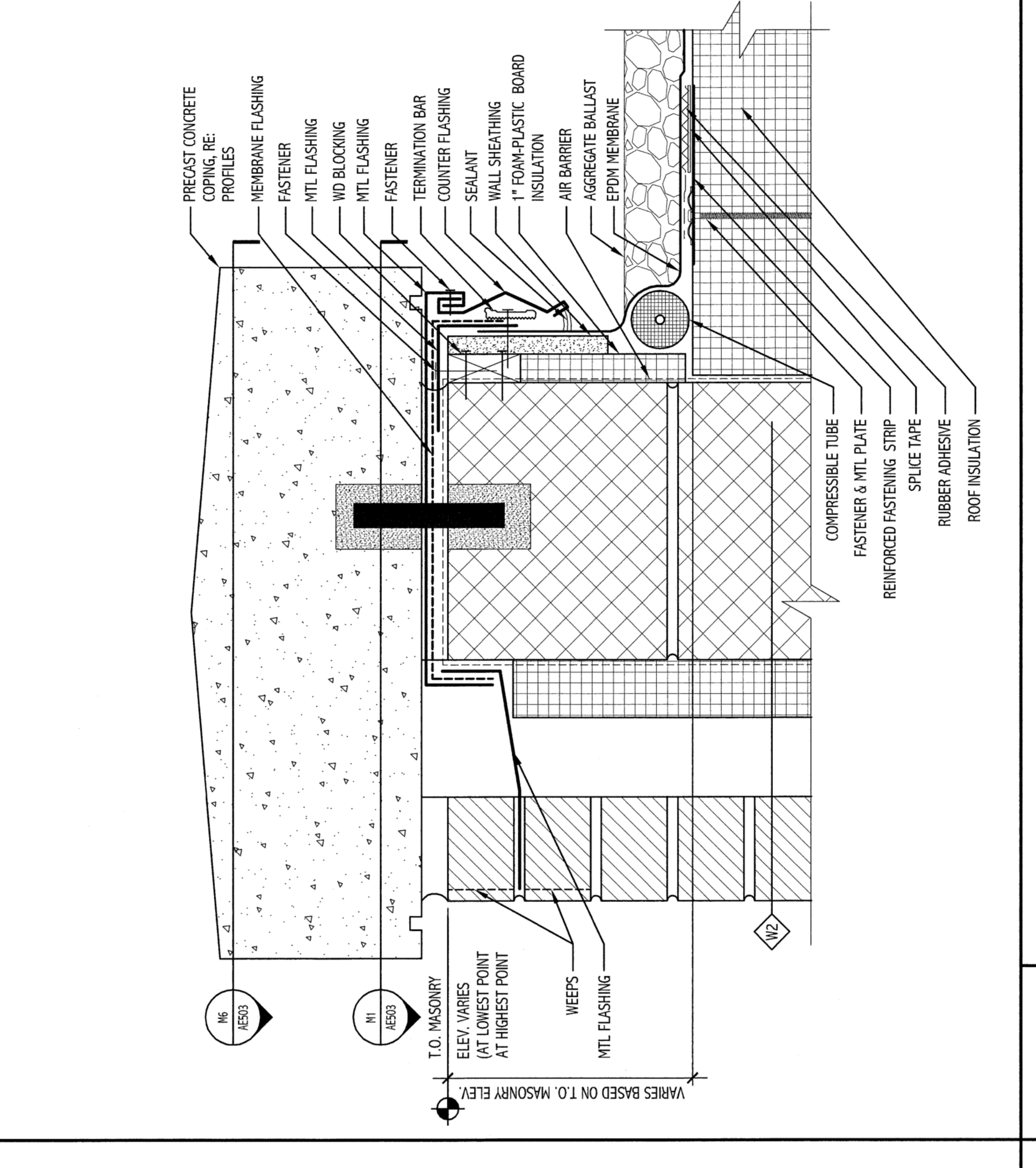
M16 SECTION DETAIL  
3" = 1'-0"



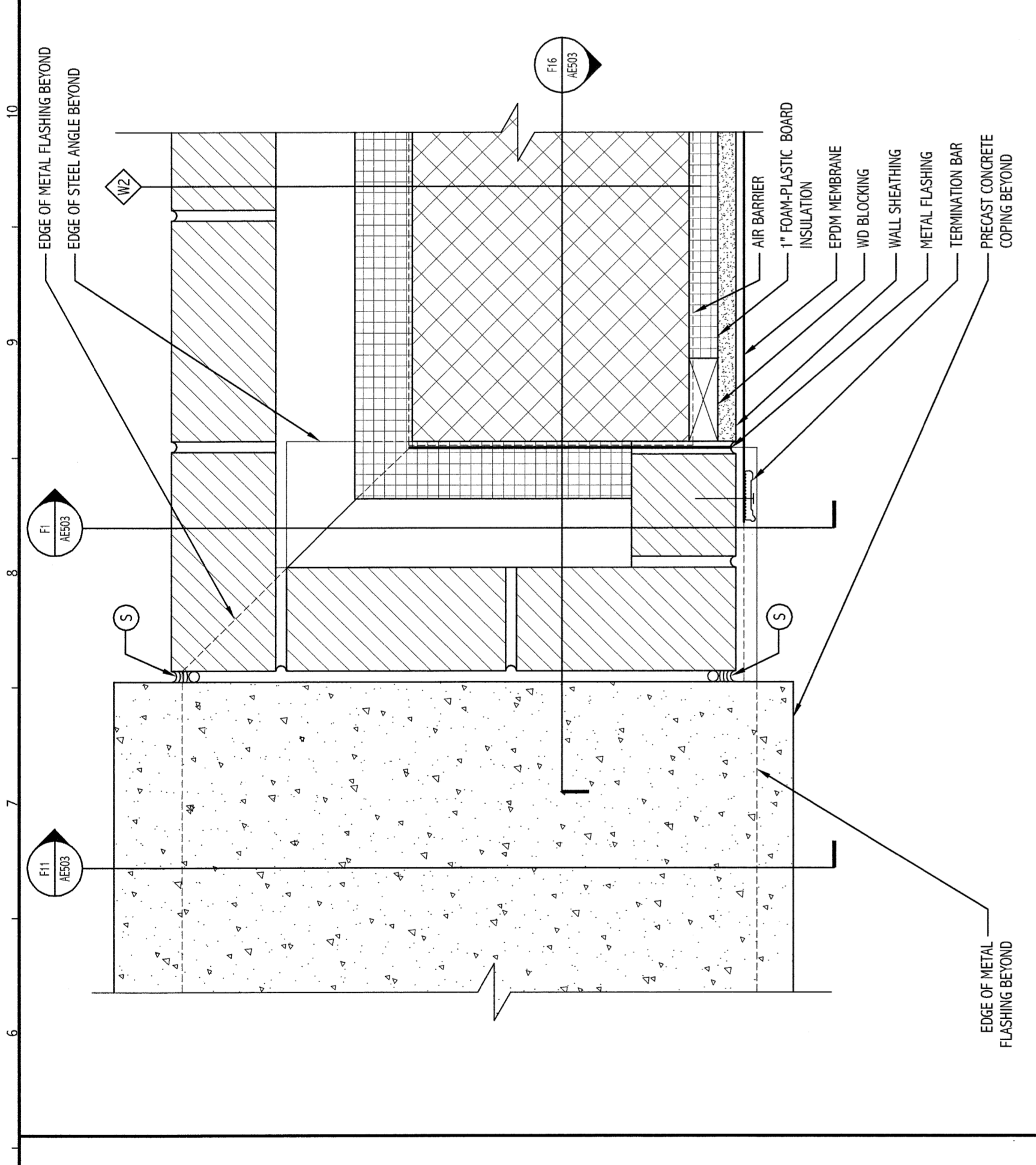
F16 SECTION DETAIL  
3" = 1'-0"



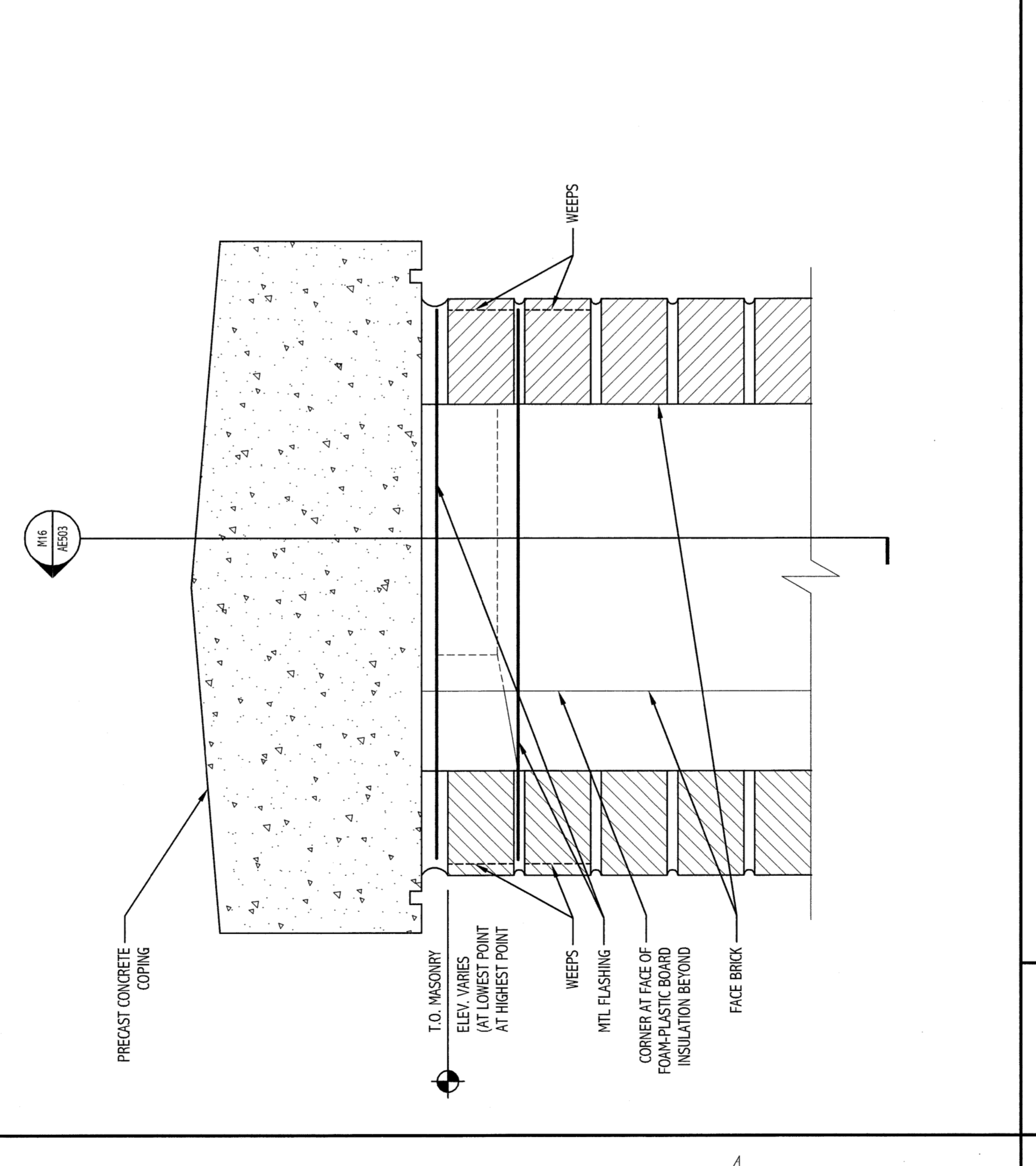
M11 PLAN DETAIL  
3" = 1'-0"



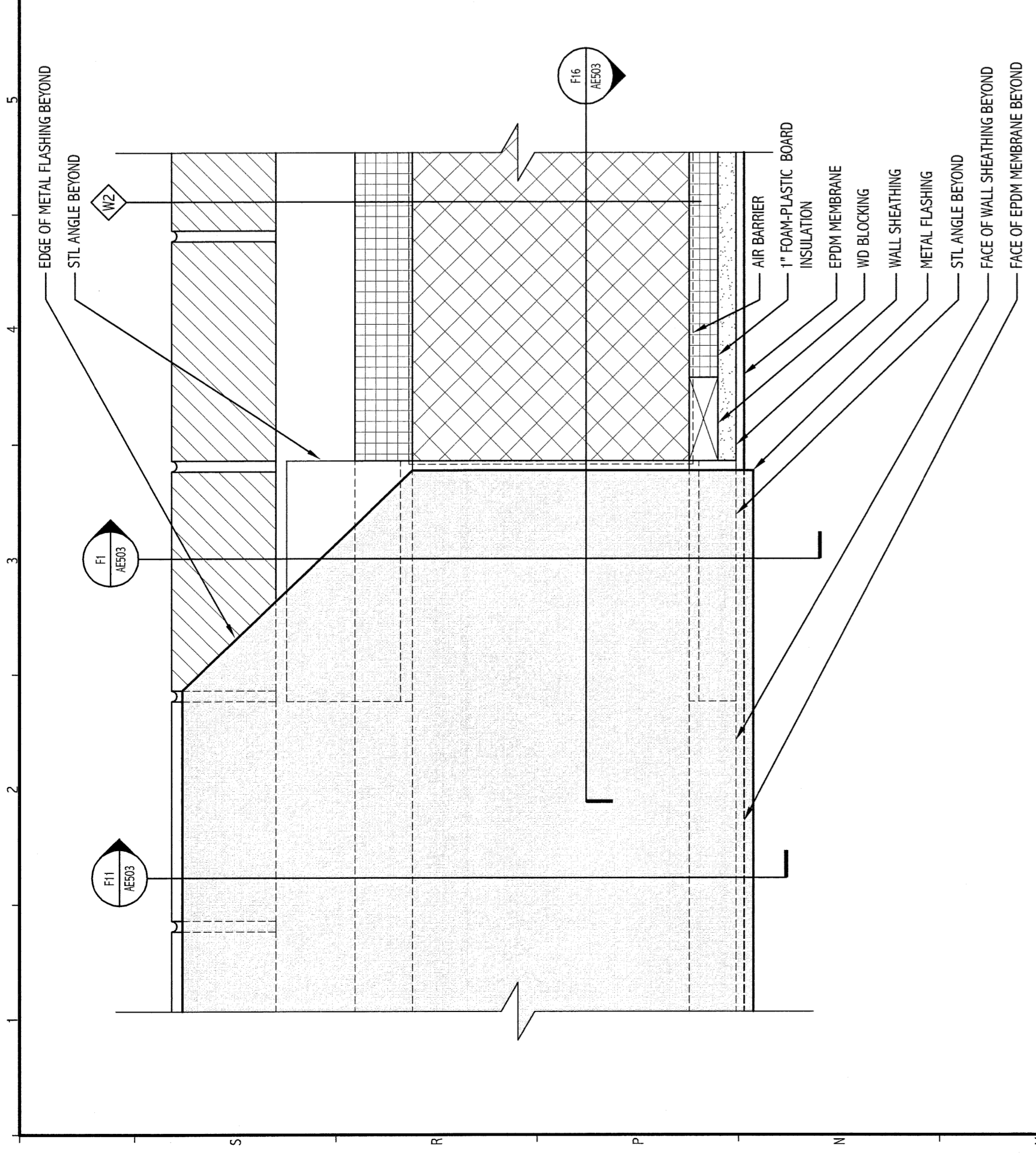
F11 SECTION DETAIL  
3" = 1'-0"



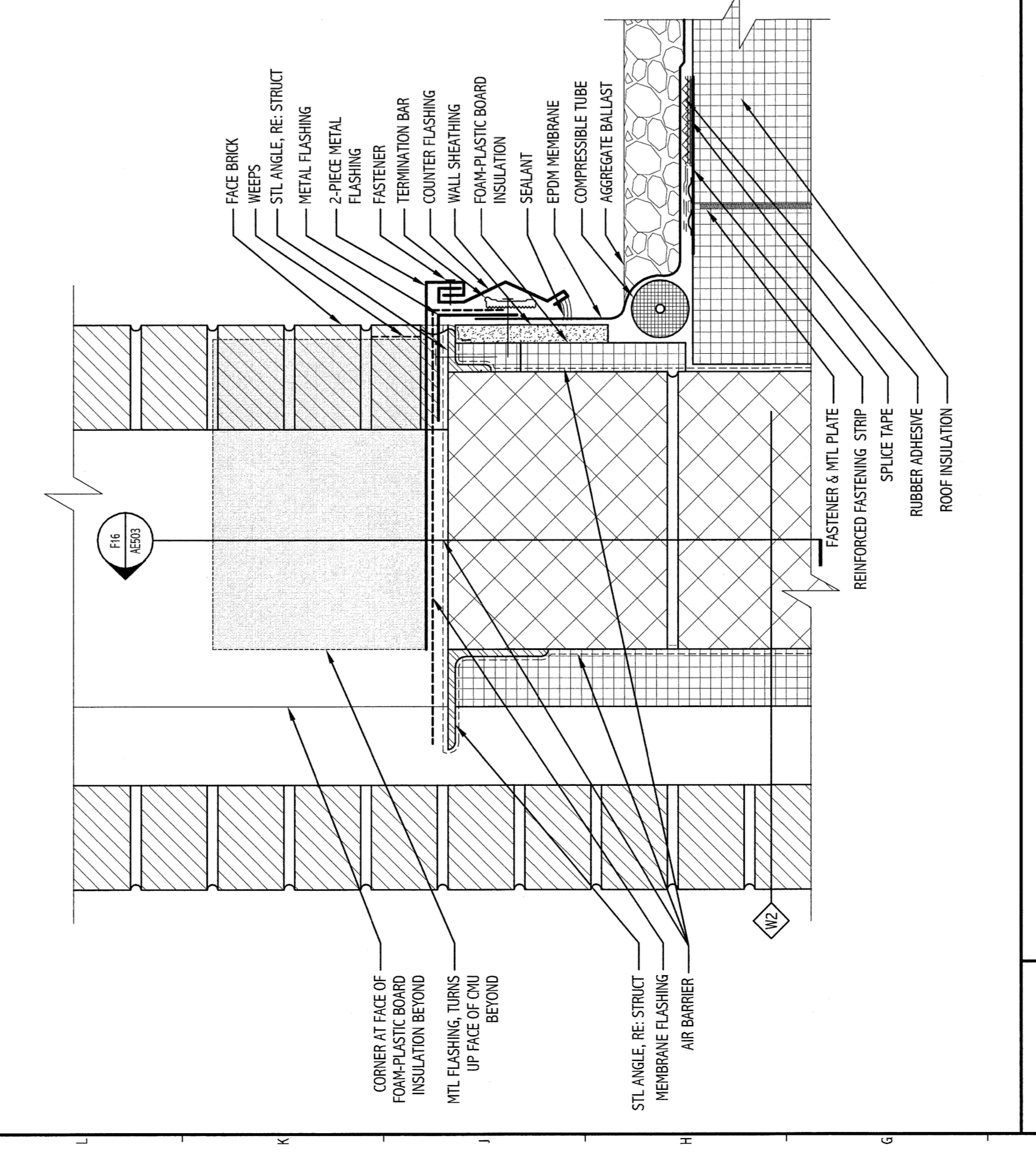
M6 PLAN DETAIL  
3" = 1'-0"



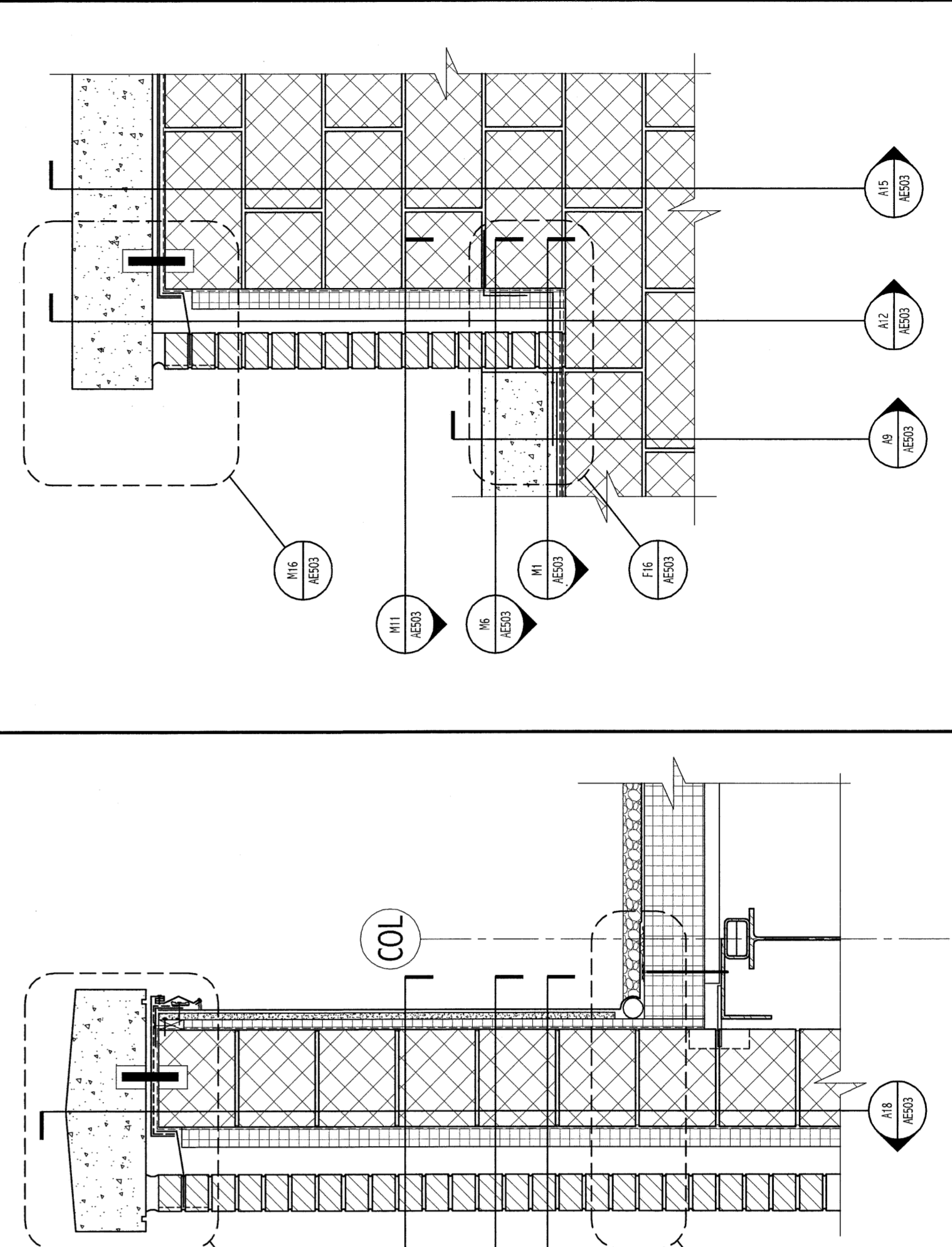
F6 SECTION DETAIL  
3" = 1'-0"



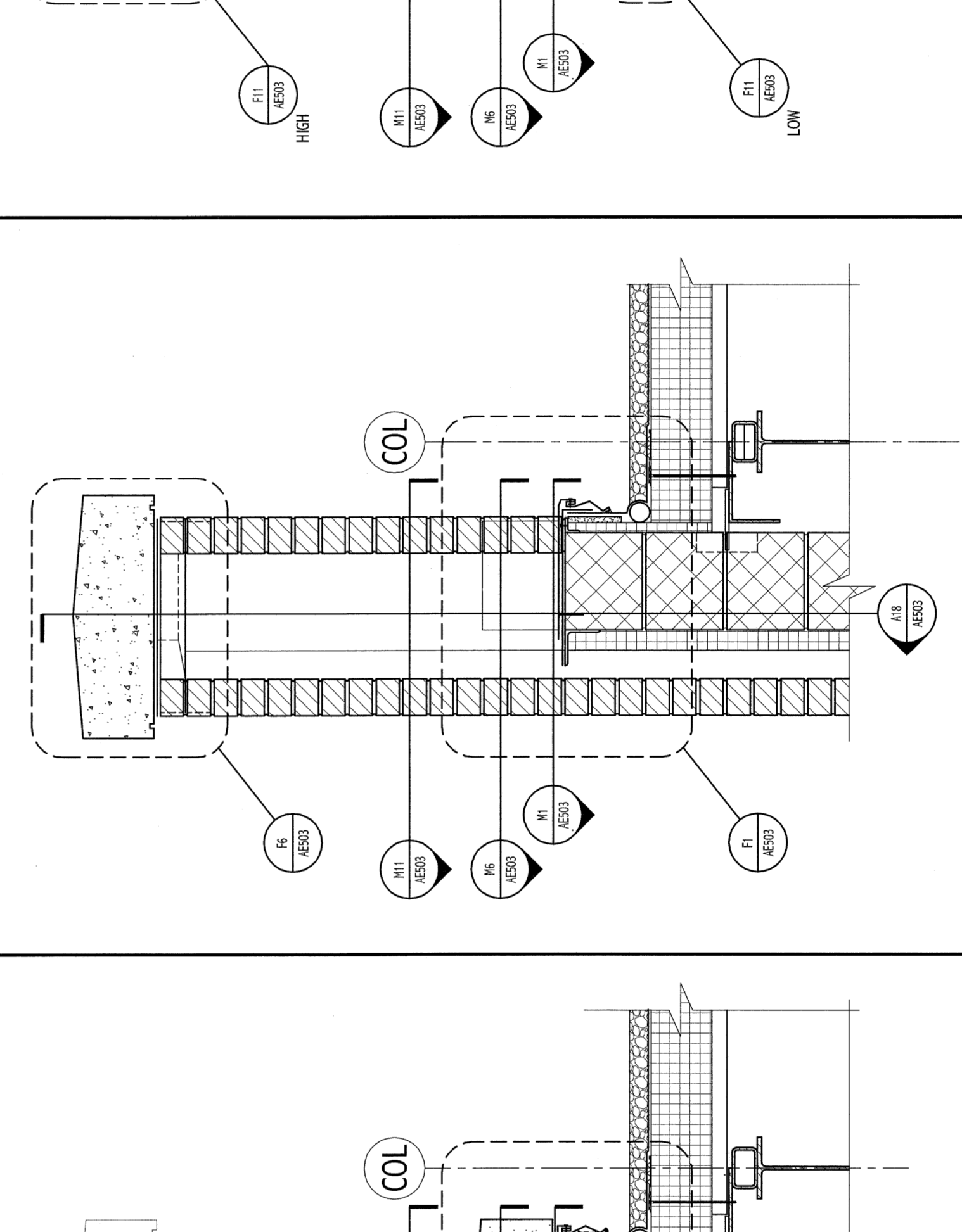
M1 PLAN DETAIL  
3" = 1'-0"



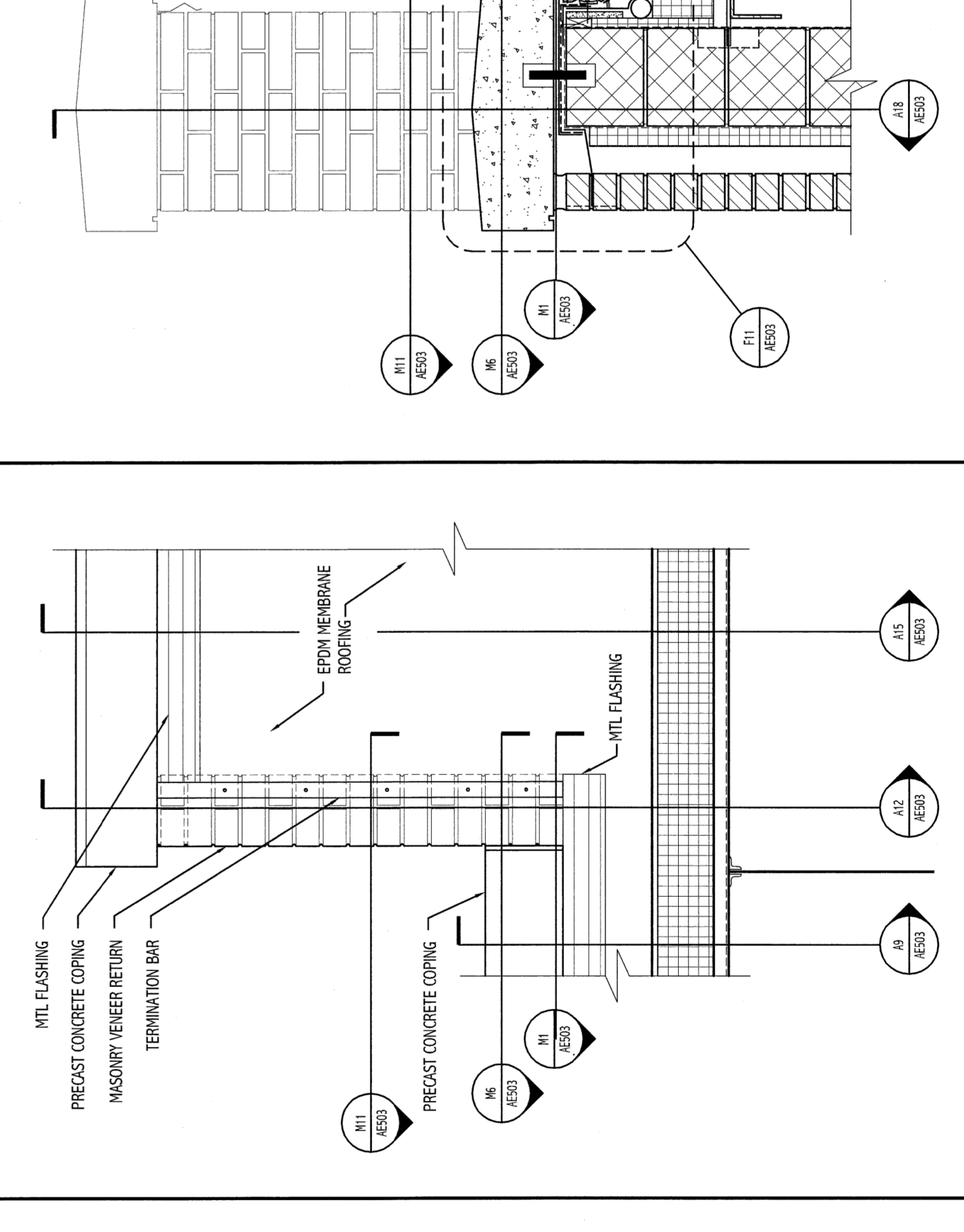
F1 SECTION DETAIL  
3" = 1'-0"



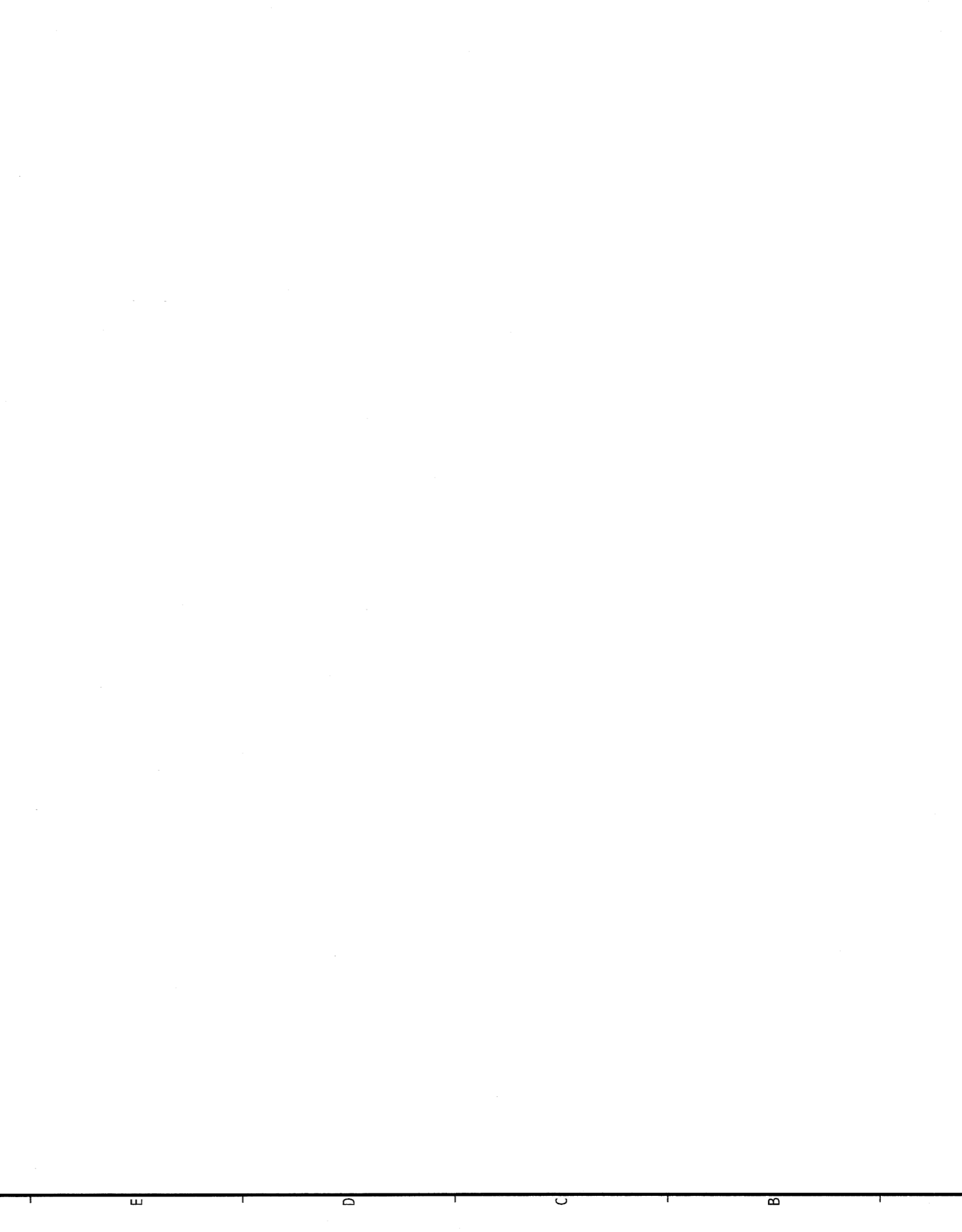
A18 SECTION DETAIL  
1" = 1'-0"



A15 SECTION DETAIL  
1" = 1'-0"



A12 SECTION DETAIL  
1" = 1'-0"



A6 ELEVATION DETAIL  
1" = 1'-0"

ISSUED FOR G.M.P. & PERMITTING  
4-3-09

PROJECT NORTH

SMRTI ARCHITECTURE  
ENGINEERING  
PLANNING  
INTERIOR DESIGN  
COMMISSIONING

MARTIN'S POINT HEALTH CARE  
MEDICAL OFFICE BUILDING  
PORTLAND, MAINE

EXTERIOR  
SECTION DETAILS

AS NOTED DATE: 08/13/09  
SCALE: GRAPHIC SCALE  
DRAWN BY: TCH/STB  
CHECKED BY: TCH/STB  
DATE OF RECORDS: 08/13/09  
SHEET No.: AE503  
PROJECT No.: 081319

PROGRESS PRINT