

GENERAL NOTES:
 1. SEE G001 FOR PROJECT GENERAL NOTES.
 2. COORDINATE REQUIREMENTS FOR EMBEDDED ANCHOR POINTS IN PRECAST CONCRETE WITH ALL OTHER CONTRACTS.
 3. COORDINATION FOR STAIR DESIGN INCLUDES ALL REQUIRED ANCHOR POINTS. FIELD COORDINATION FOR ADDITIONAL ANCHOR POINTS IN PRECAST CONCRETE SHALL BE PROVIDED AS REQUIRED WITHOUT ADDITIONAL COST TO THE CONTRACT.

REV.	DESCRIPTION	DATE

ISSUED FOR G.M.P. & PERMITTING
 4-3-09



SMRTI
 ARCHITECTURE
 ENGINEERING
 PLANNING
 INTERIOR DESIGN
 COMMISSIONING

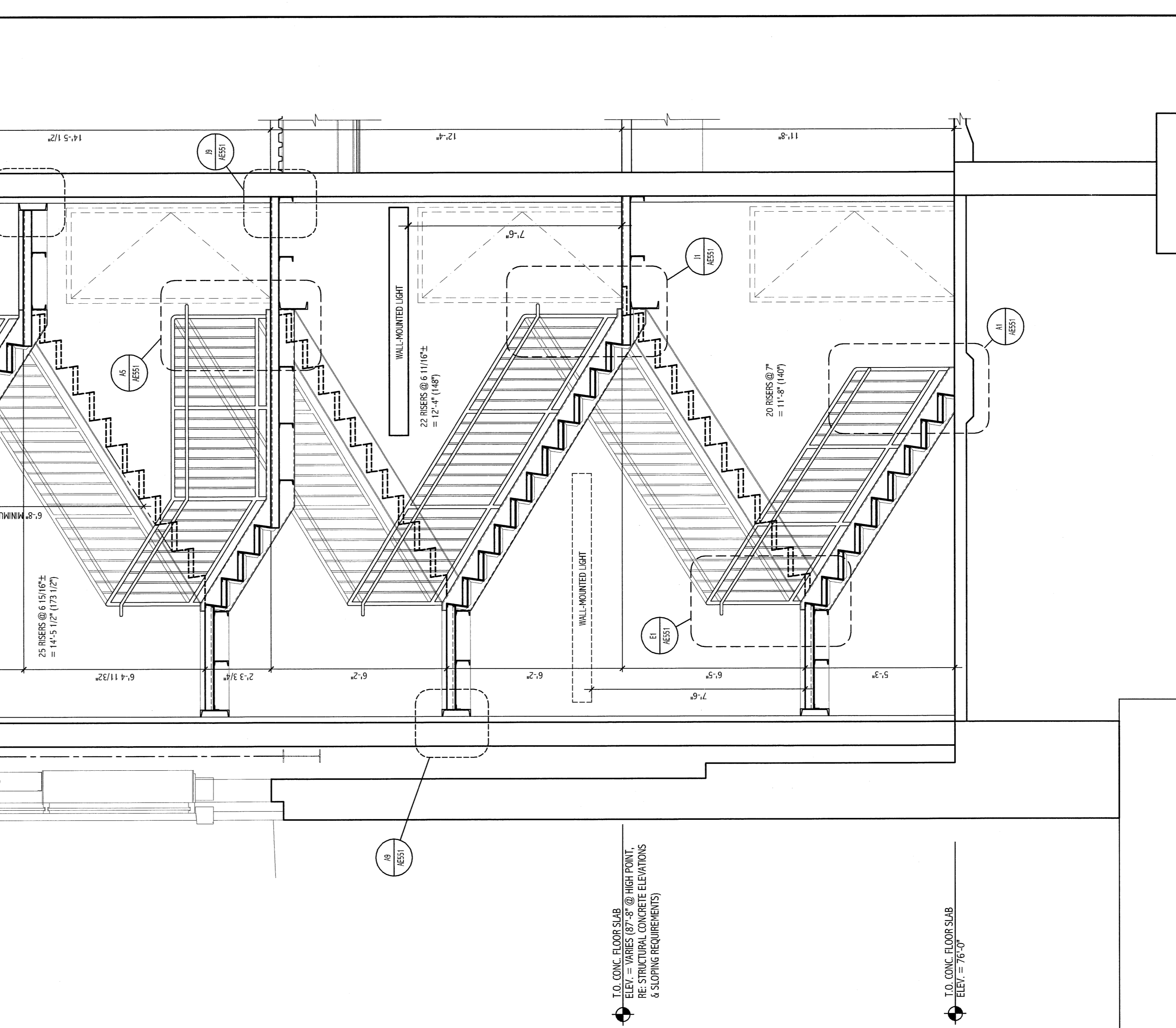
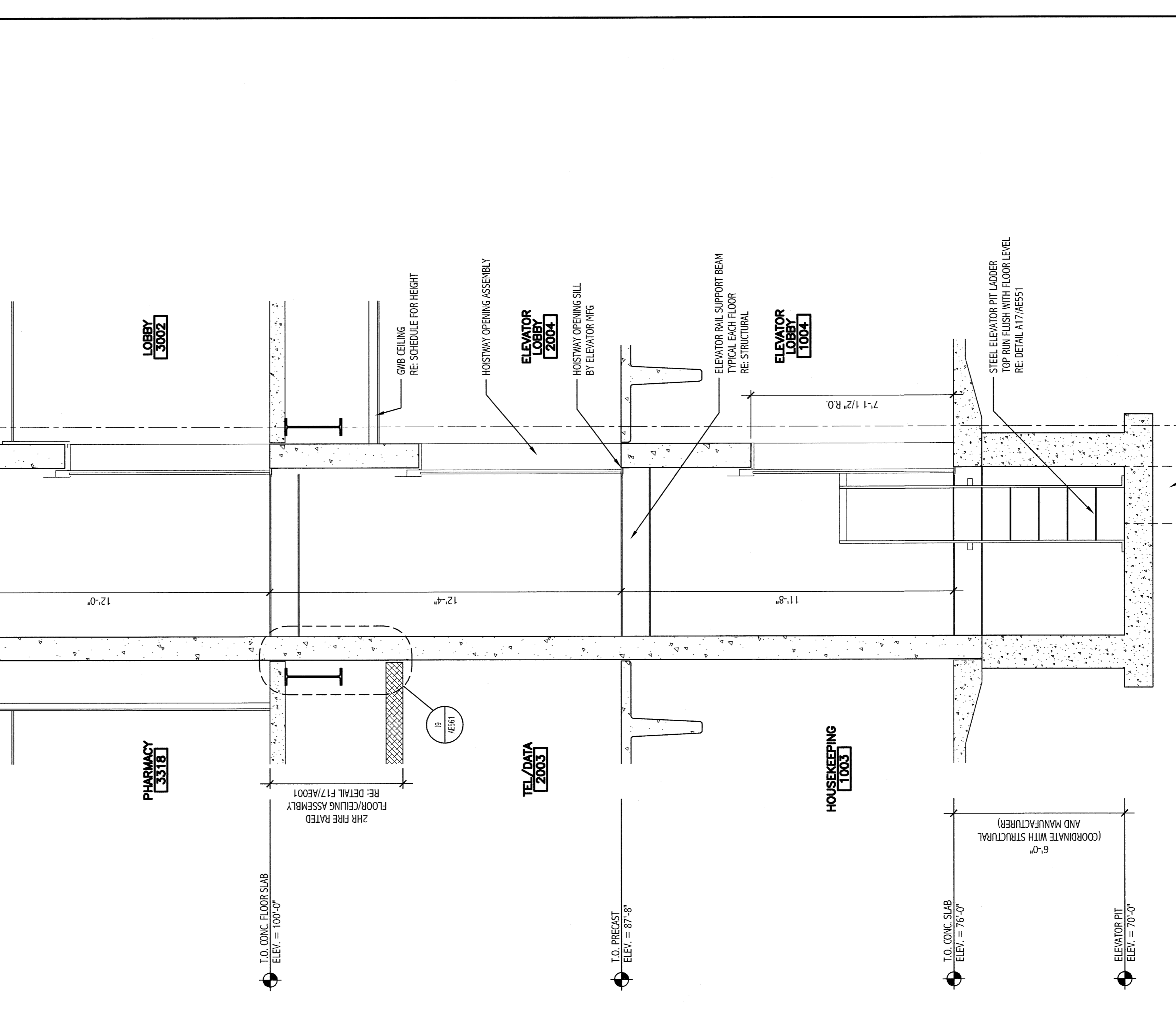
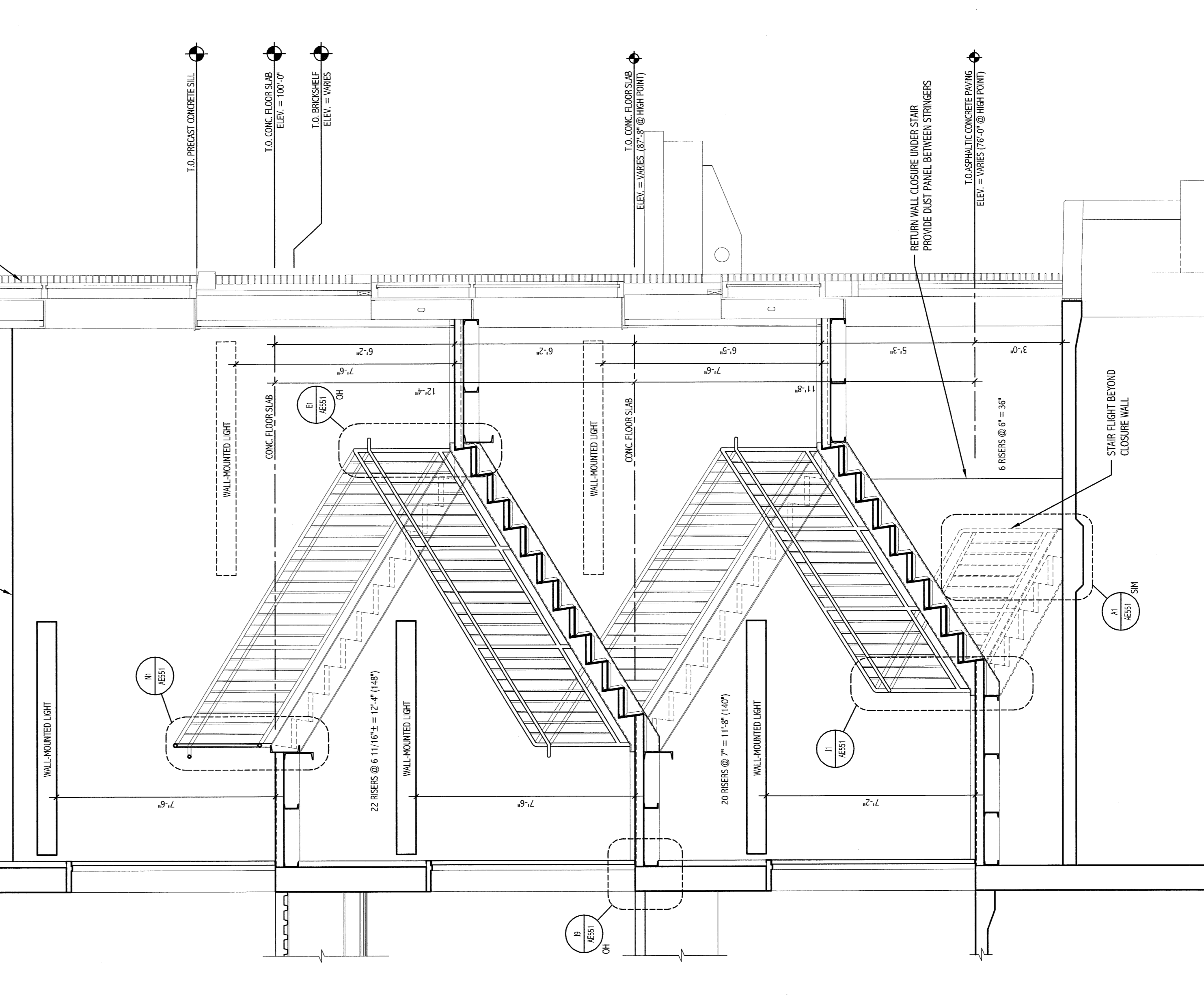
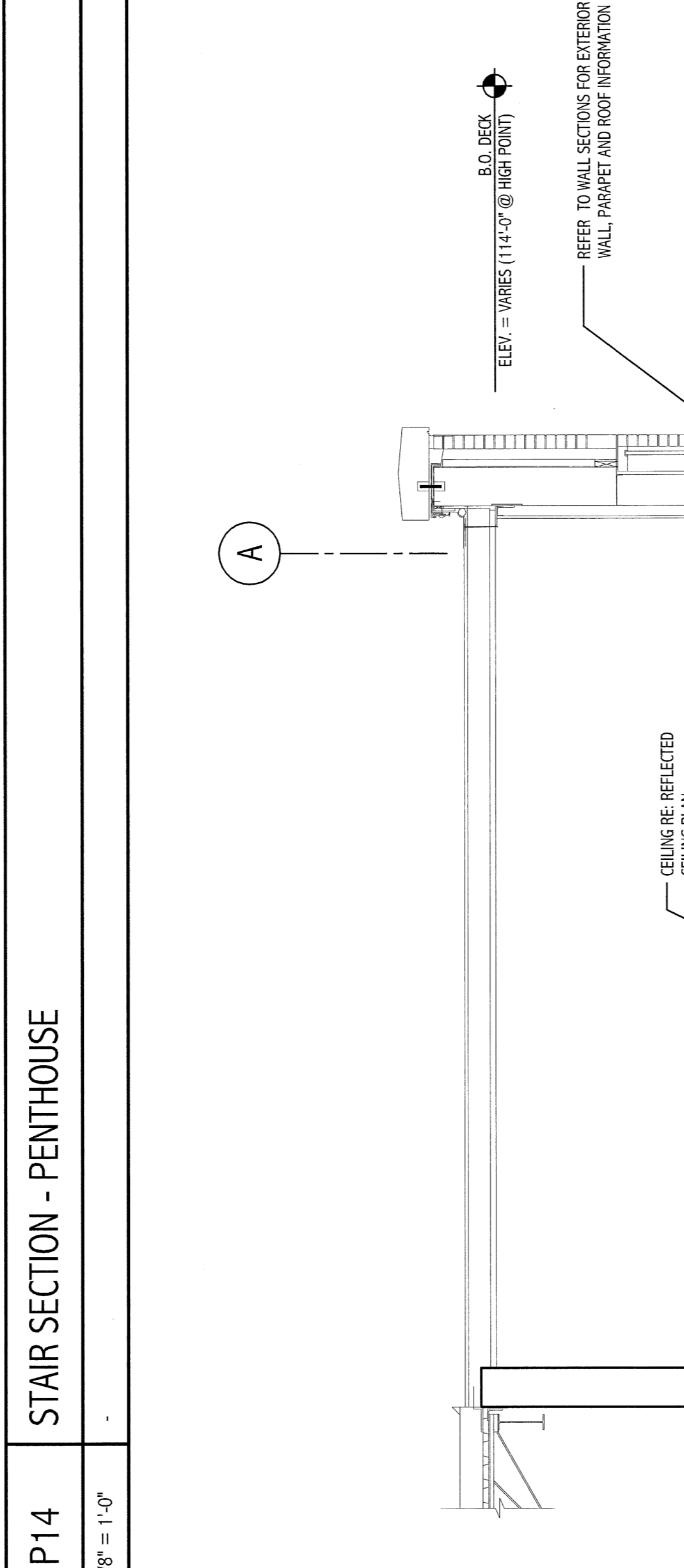
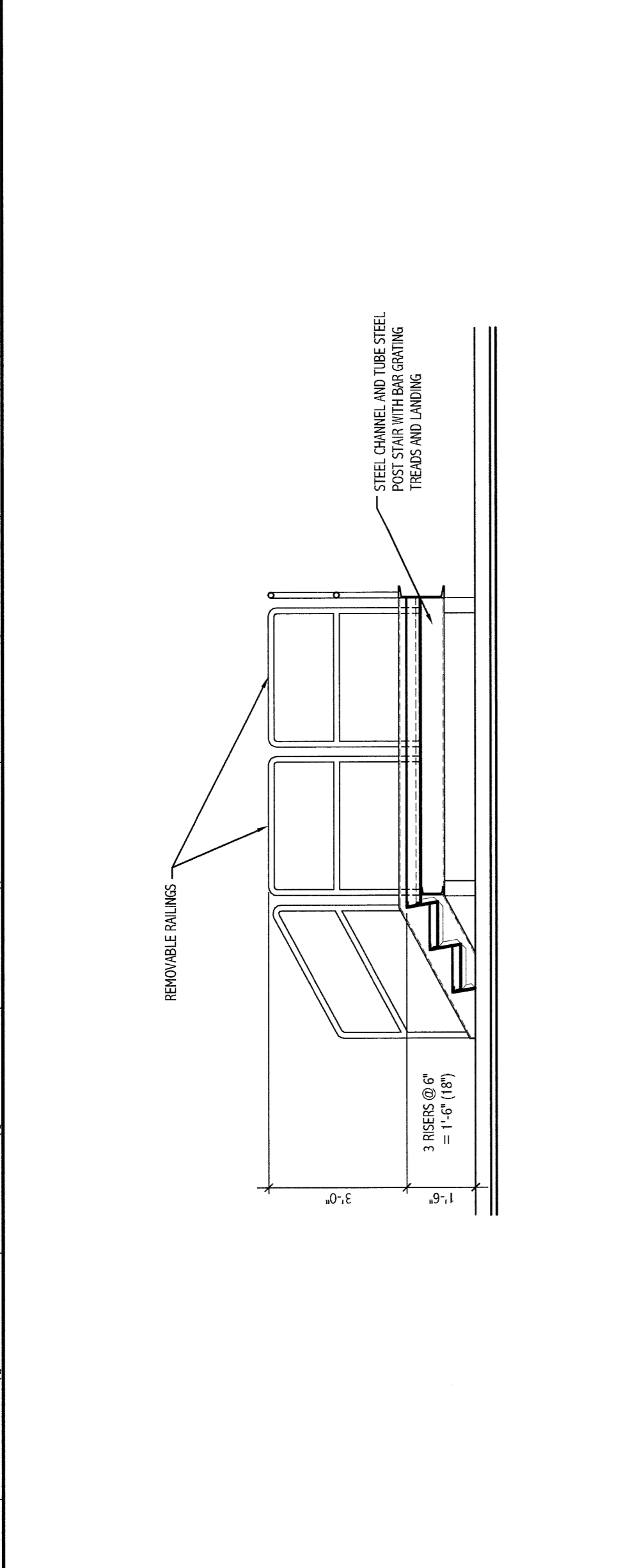
144 West Street, Suite 618
 Portland, Maine 04103
 Telephone: (207) 755-0100
 Fax: (207) 755-0105
 www.smrti.com

MARTIN'S POINT HEALTH CARE
 MEDICAL OFFICE BUILDING
 PORTLAND, MAINE

ENLARGED STAIR
 PLANS AND SECTIONS
 SHEET TITLE

SCALE: AS NOTED DATE: GRAPHIC SCALE: 1" = 4'-0"

PROJECT NUMBER: 1071002003 SHEET No. AE-412
 DATE OF RECORD: 08/23/08
 DATE OF ISSUE: AE-412-08-233 08/23/08
 PROJECT No. 08/23/08



PROGRESS PRINT

SECTION	SCALE	DATE
A1	3/8\"/>	
A7	3/8\"/>	
A14	3/8\"/>	
A14	3/8\"/>	