

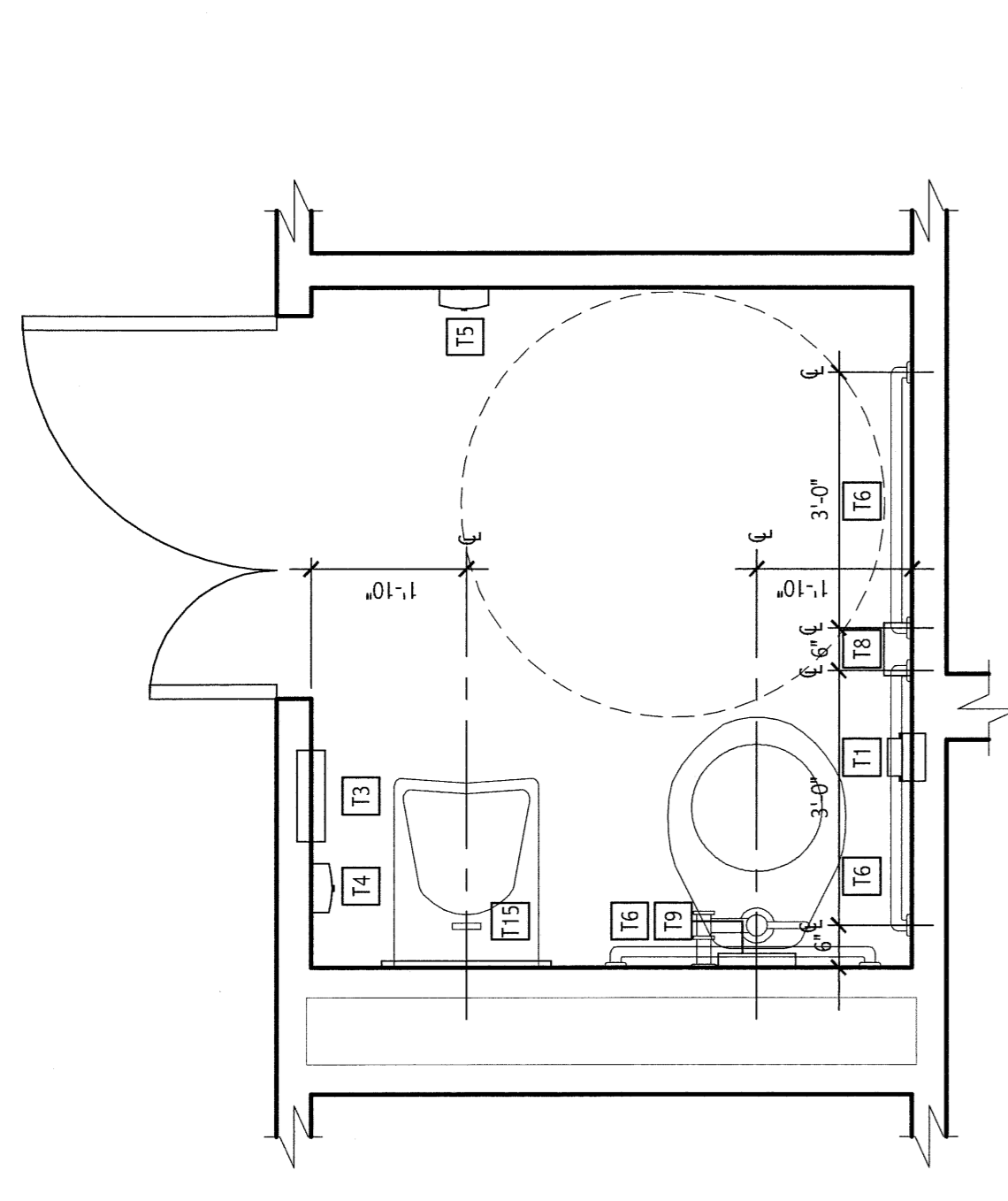
- GENERAL NOTES:**
- SEE 4000 FOR PROJECT GENERAL NOTES.
 - HAND SANITIZER DISPENSERS MUST BE A 3/4" RADIUS FROM ANYTHING DRAWING ELECTRIC CURRENT.

TOILET ACCESSORIES KEY NOTES:

- T1 RECESSED MULTI ROLL TOILET TISSUE DISPENSER
- T2 SURFACE MOUNTED PAPER TOWEL DISPENSER
- T3 RECESSED PAPER TOWEL DISPENSER IN WASTE RECEPTACLE
- T4 SURFACE MOUNTED SOAP DISPENSER
- T5 SURFACE MOUNTED HAND SANITIZER DISPENSER (SEE GENERAL NOTE 2)
- T6 18" WOOD BENCH
- T7 42" WOOD BENCH
- T8 SURFACE MOUNTED SANITARY WIPER DISPOSAL
- T9 SURFACE MOUNTED SEAT COVER DISPENSER
- T10 SINGLE ROLL TISSUE
- T11 TISSUE PAIL
- T12 RECESSED SPECIMEN VACUUM CORNET
- T13 WALL MOUNTED DRYER COMBINATION STATION
- T14 STAINLESS STEEL SINK
- T15 24" x 36" MIRROR

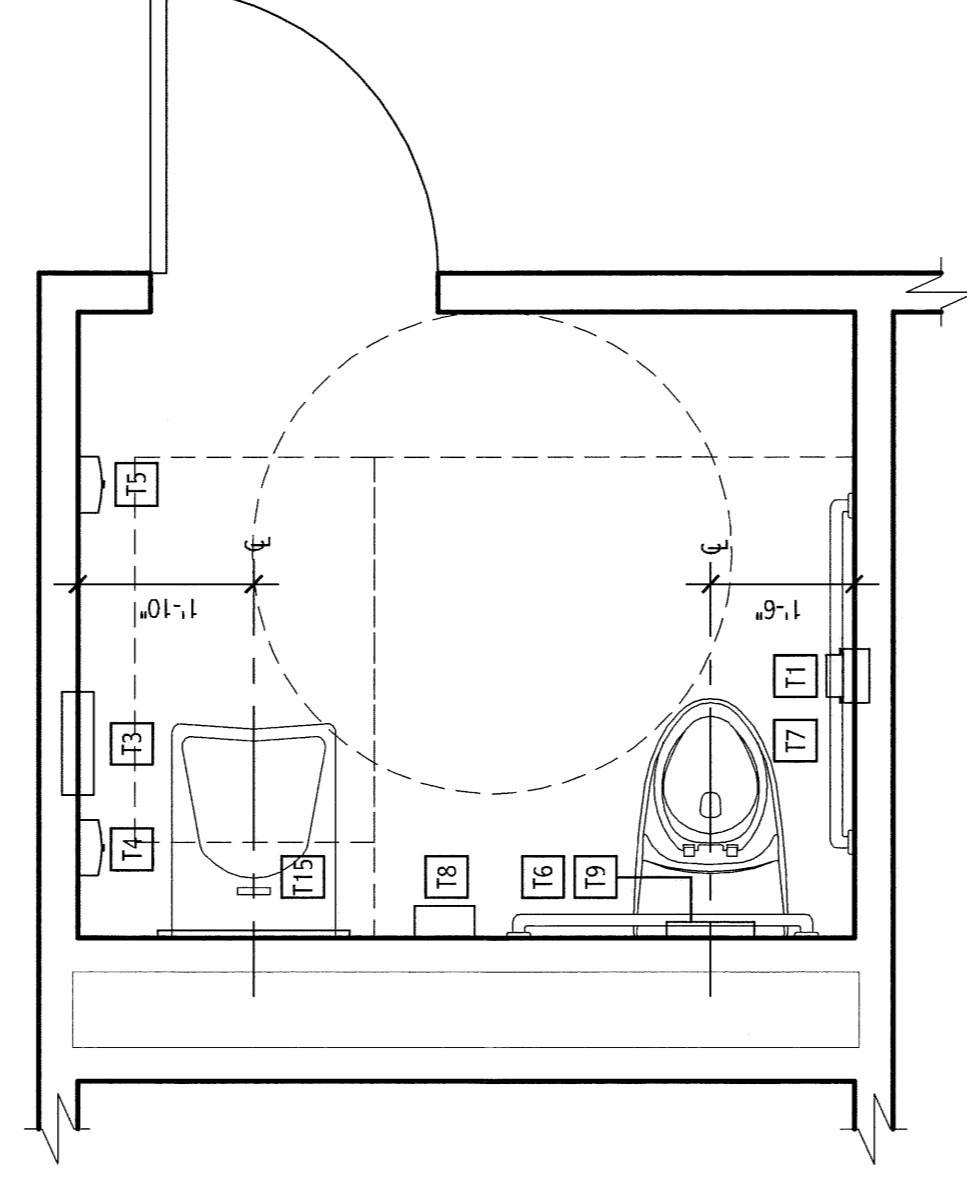
EXAM ROOM KEY NOTES:

- A1 GUEST SEATING
- B1 STOOL
- C1 EXAM TABLE
- D1 COMPUTER WORKSTATION
- E1 BULLETIN BOARD
- F1 WALL MOUNTED BLOOD PRESSURE CUFF
- G1 WALL MOUNTED STORAGE CORNET



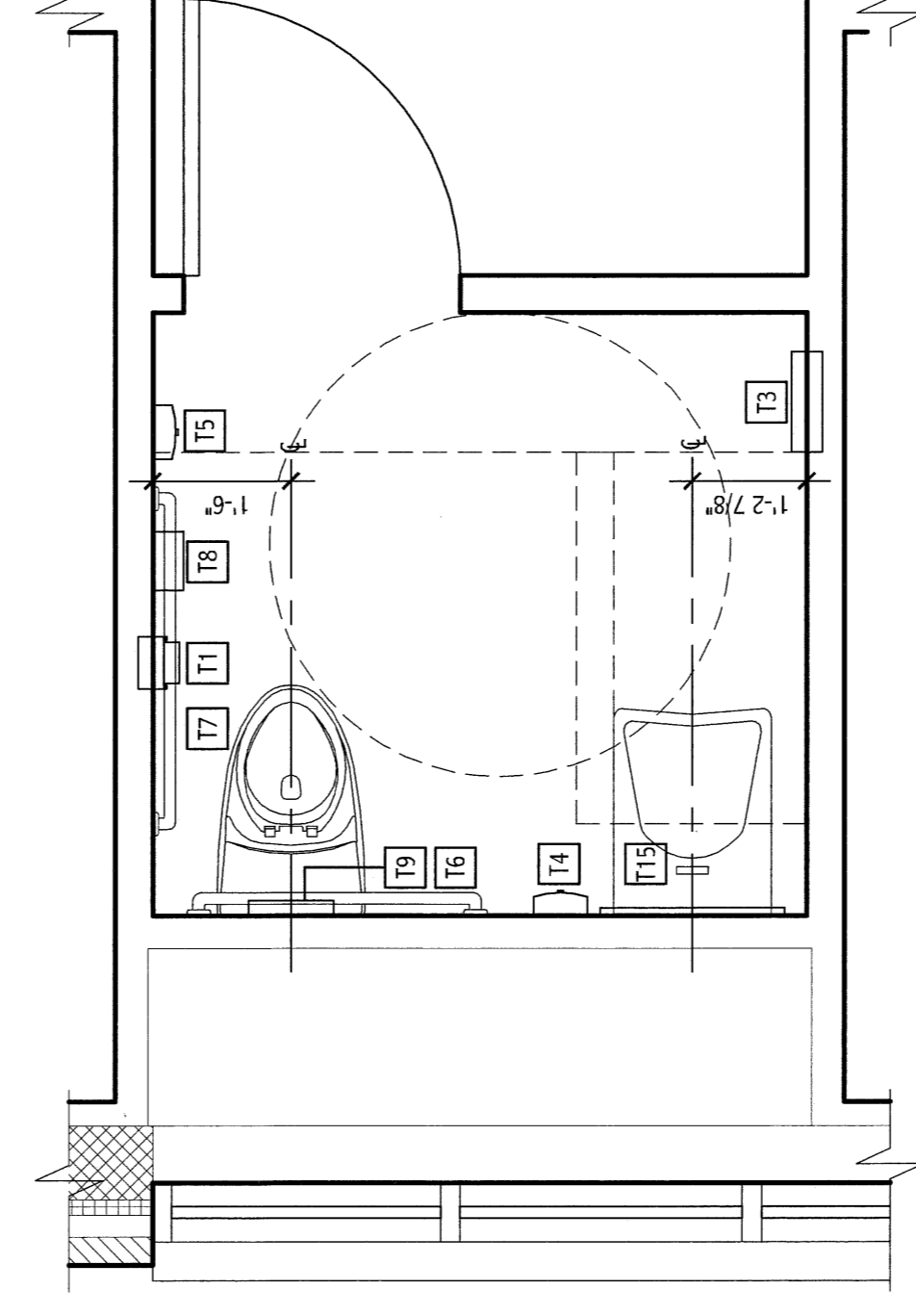
N17
ENLARGED PARTIAL PLAN - TYPICAL BERIATIC TOILET

TYPICAL @ ROOM 3136
TYPICAL (OPP. HAND) @ ROOM 3084



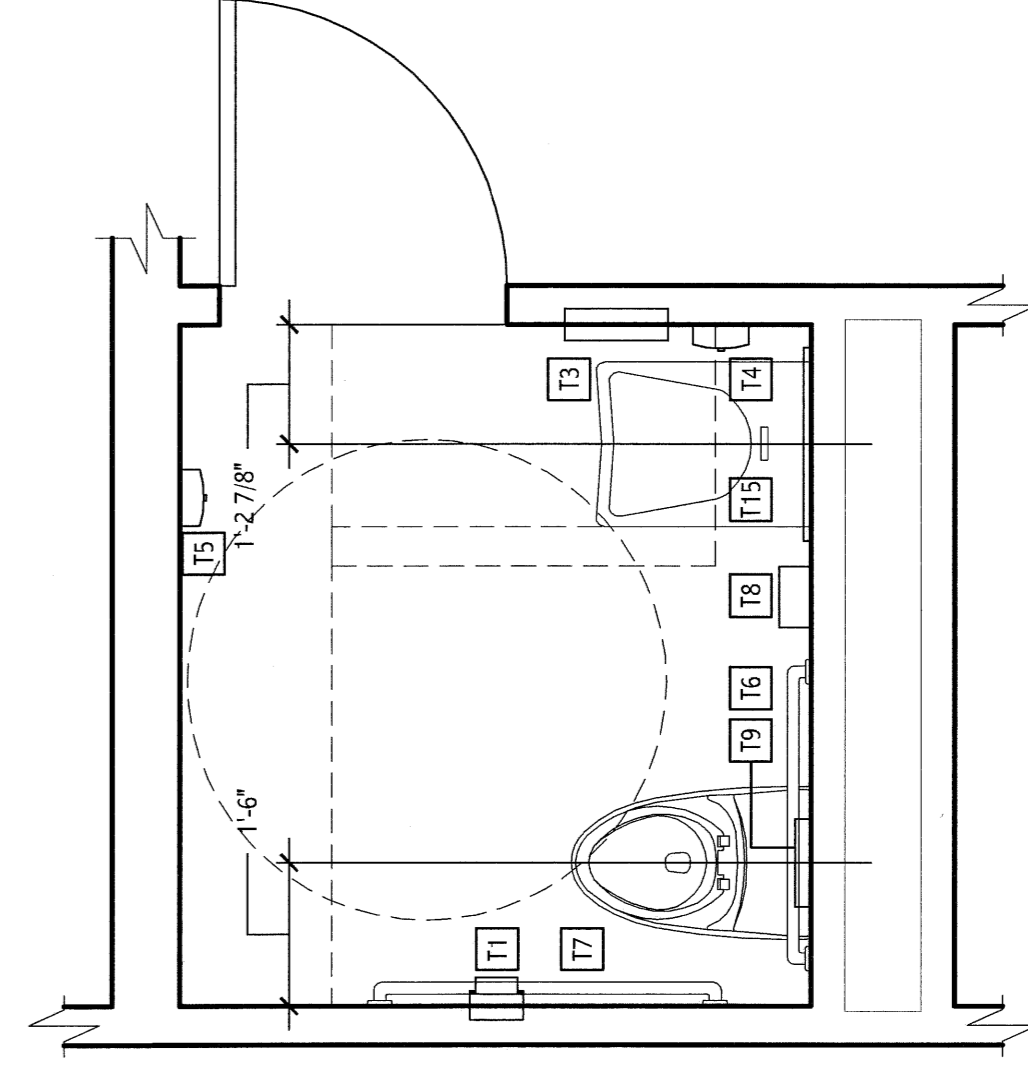
J17
ENLARGED PARTIAL PLAN - TOILET 3133

1/2" = 1'-0"



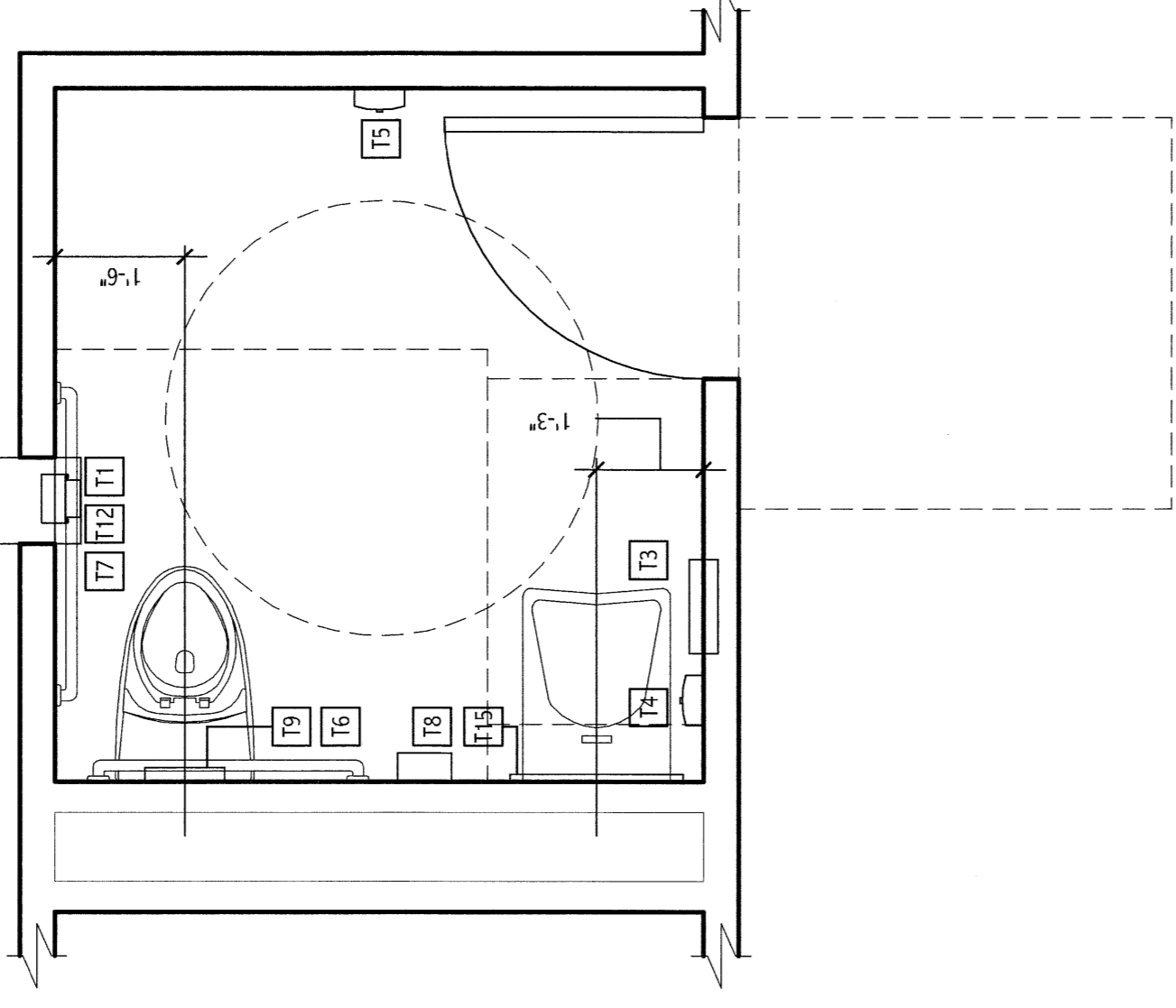
E17
ENLARGED PARTIAL PLAN - TYPICAL TOILET "B"

TYPICAL @ ROOM 3251
TYPICAL (OPP. HAND) @ ROOM 3045



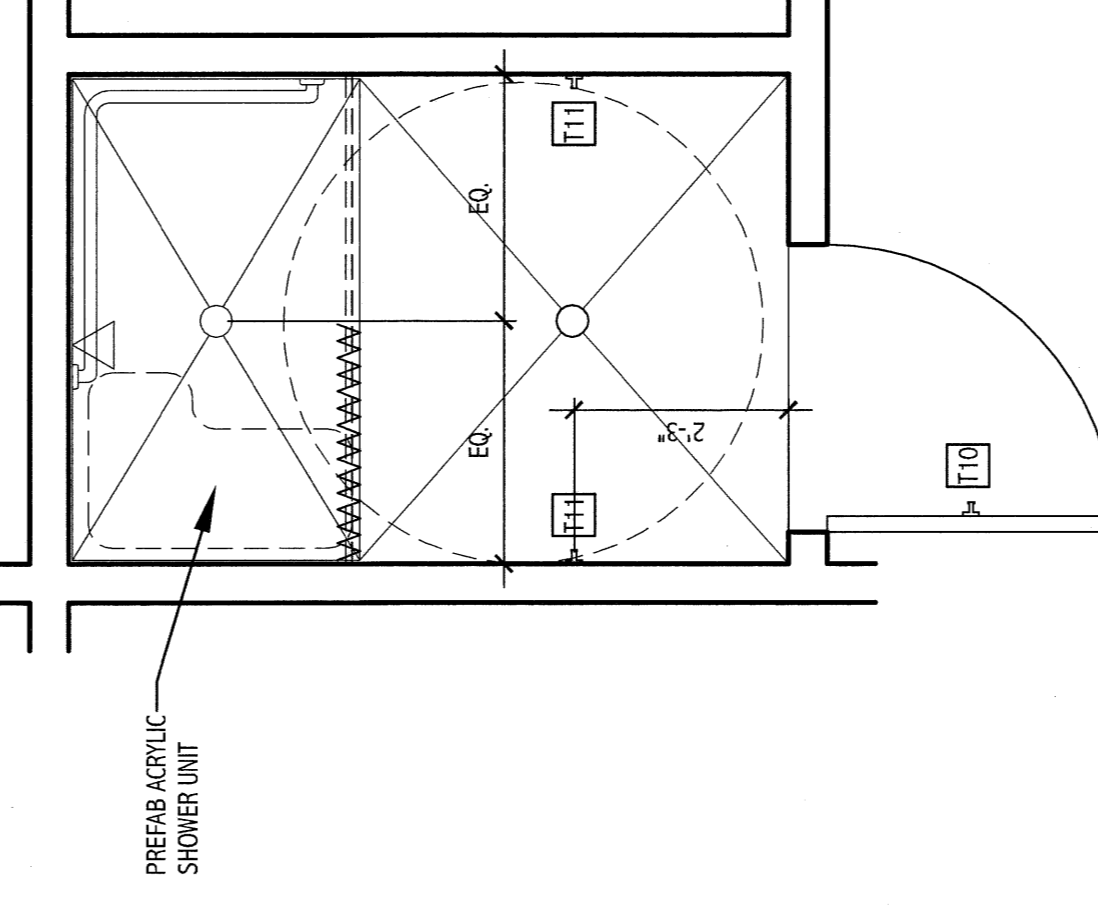
A17
ENLARGED PARTIAL PLAN - TYPICAL TOILET "A"

TYPICAL @ ROOMS 3035, 3087A, 3117, 3133, 3158, 3204, 3252, 3301
TYPICAL (OPP. HAND) @ ROOMS 3055, 3083, 3099



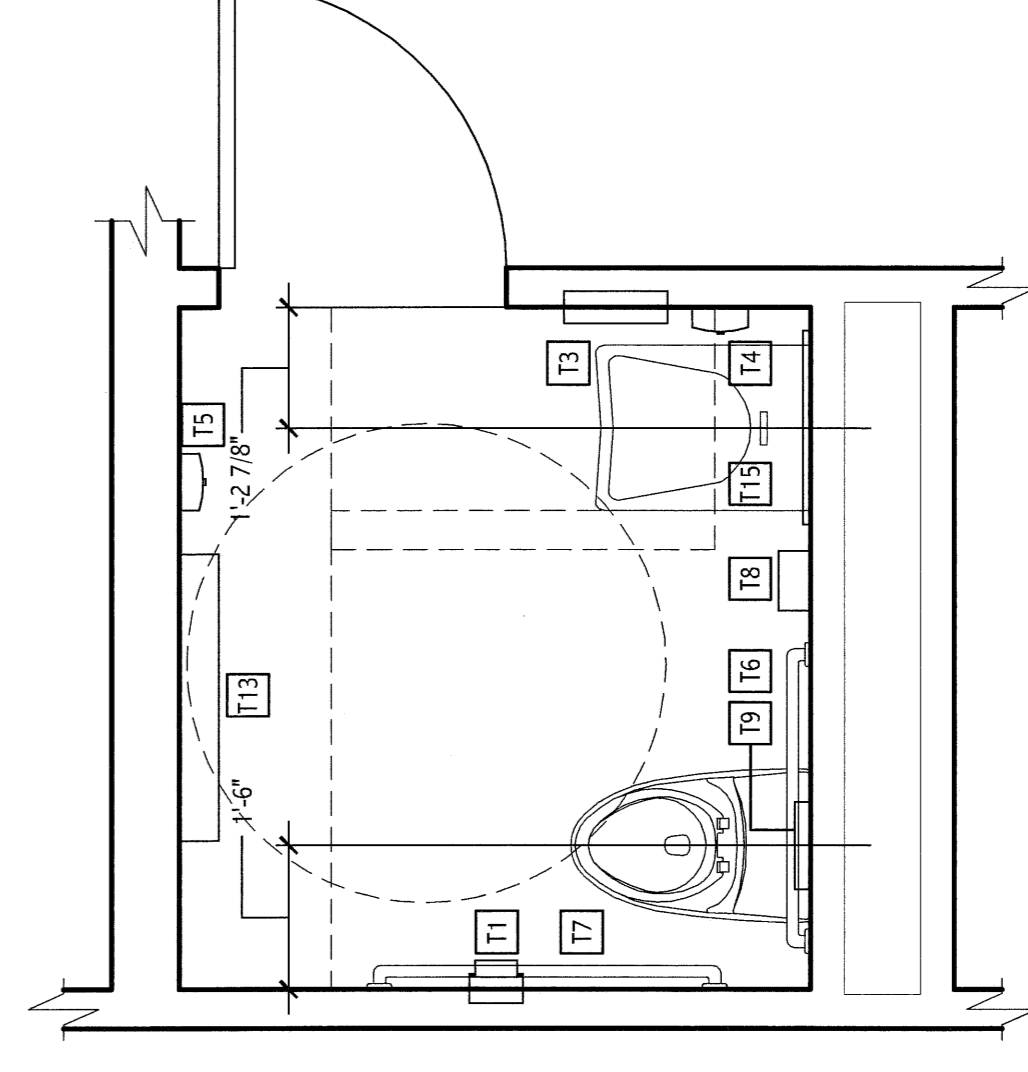
J13
ENLARGED PARTIAL PLAN - TYPICAL TOILET "C"

TYPICAL @ ROOM 3107
TYPICAL (OPP. HAND) @ ROOM 3008



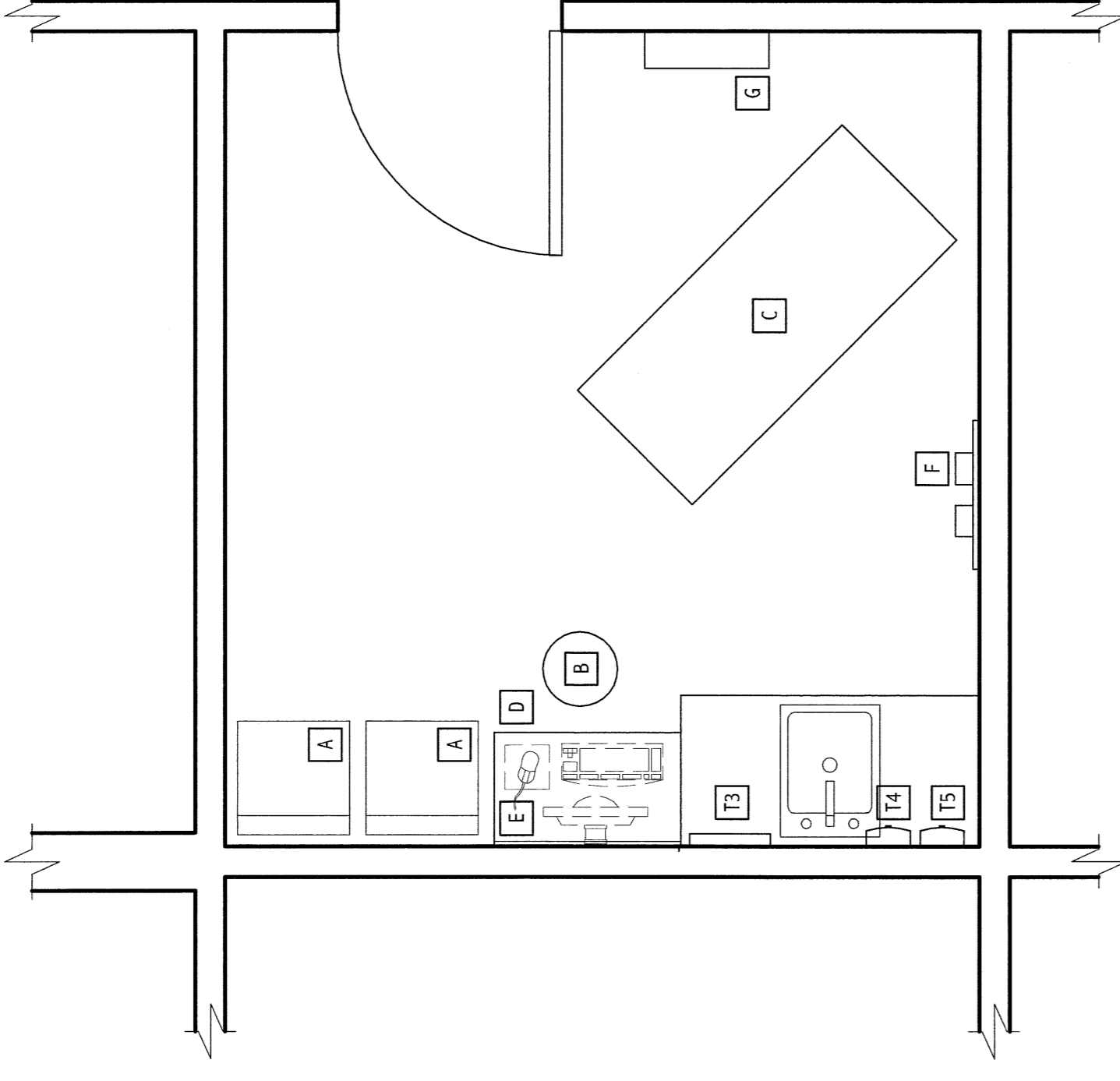
E13
ENLARGED PARTIAL PLAN - TYPICAL STAFF SHOWER

TYPICAL @ ROOM 3157
TYPICAL (OPP. HAND) @ ROOM 3154



A13
ENLARGED PARTIAL PLAN - TYPICAL TOILET "A"

TYPICAL @ ROOM 3035
TYPICAL (OPP. HAND) @ ROOM 3024



J9
ENLARGED PARTIAL PLAN - TYPICAL EXAM ROOM

1/2" = 1'-0"

E9

E5

A9

A5

N5

N1

REV.	DESCRIPTION	DATE

ISSUED FOR G.M.P. & PERMITTING
4-3-09

CURRENT ISSUE STATUS:

144 Fore Street P.O. Box 518
Portland, Maine 04104
Tel: (207) 772-3000
Fax: (207) 772-3001
www.lamtec.com

SMART
ARCHITECTURE
ENGINEERING
PLANNING
INTERIOR DESIGN
COMMISSIONING

MARTIN'S POINT HEALTH CARE
MEDICAL OFFICE BUILDING
PORTLAND, MAINE

ENLARGED PARTIAL
TOILET & SHOWER PLANS

SHEET TITLE

SCALE: SUB GRAPHIC SCALE

PROJECT MANAGER: SUB TOILET

DATE: SUB

PROJECT NO.: JEC01081301 08139

SHEET NO.: AE-401

PROGRESS PRINT