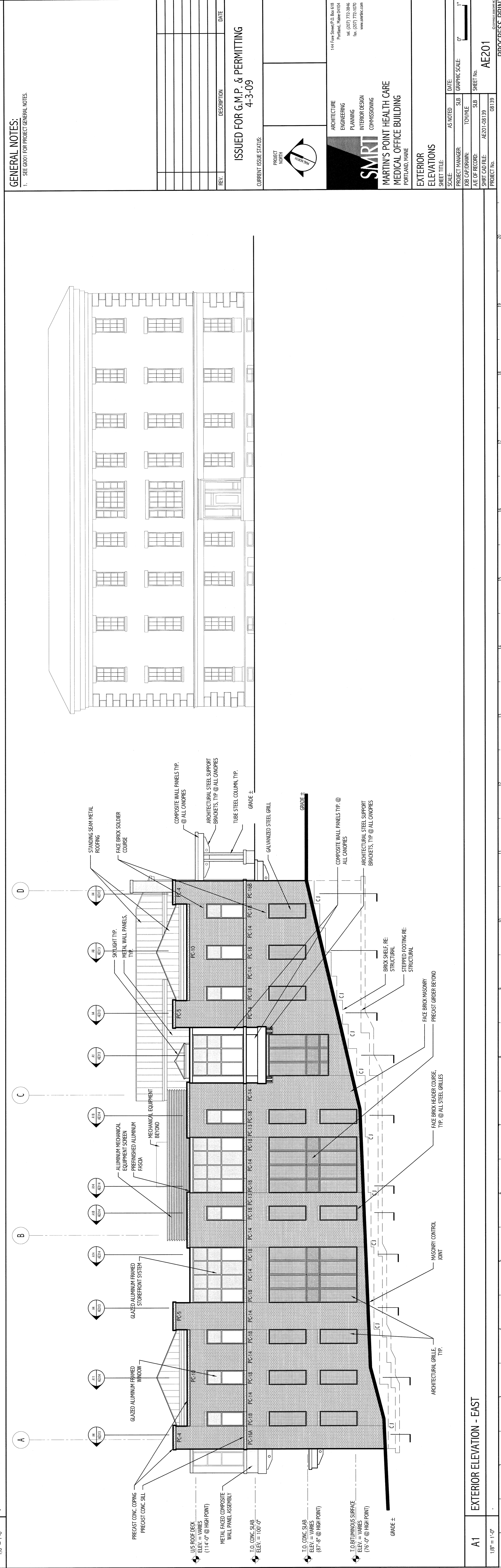


J1 EXTERIOR ELEVATION - NORTH
1/8" = 1'-0"

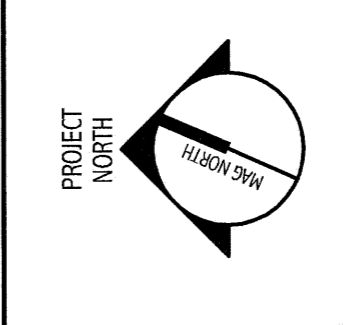


A1 EXTERIOR ELEVATION - EAST
1/8" = 1'-0"

GENERAL NOTES:
1. SEE GOOD FOR PROJECT GENERAL NOTES.

REV.	DESCRIPTION	DATE

ISSUED FOR G.M.P. & PERMITTING
4-3-09



144 First Street, Box 618
Portland, Maine 04101
Tel: (207) 726-0000
Fax: (207) 726-0001
www.smrt.com

SMRT
ARCHITECTURE
ENGINEERING
PLANNING
INTERIOR DESIGN
COMMISSIONING

MARTIN'S POINT HEALTH CARE
MEDICAL OFFICE BUILDING
PORTLAND, MAINE

EXTERIOR
ELEVATIONS

SCALE	AS NOTED	DATE	GRAPHIC SCALE
PROJECT NUMBER	1070000		0'
DATE OF RECORD			SHEET NO.
DATE OF ISSUE			AE201
PROJECT NO.	AE201/0813/03	0813	

PROGRESS PRINT