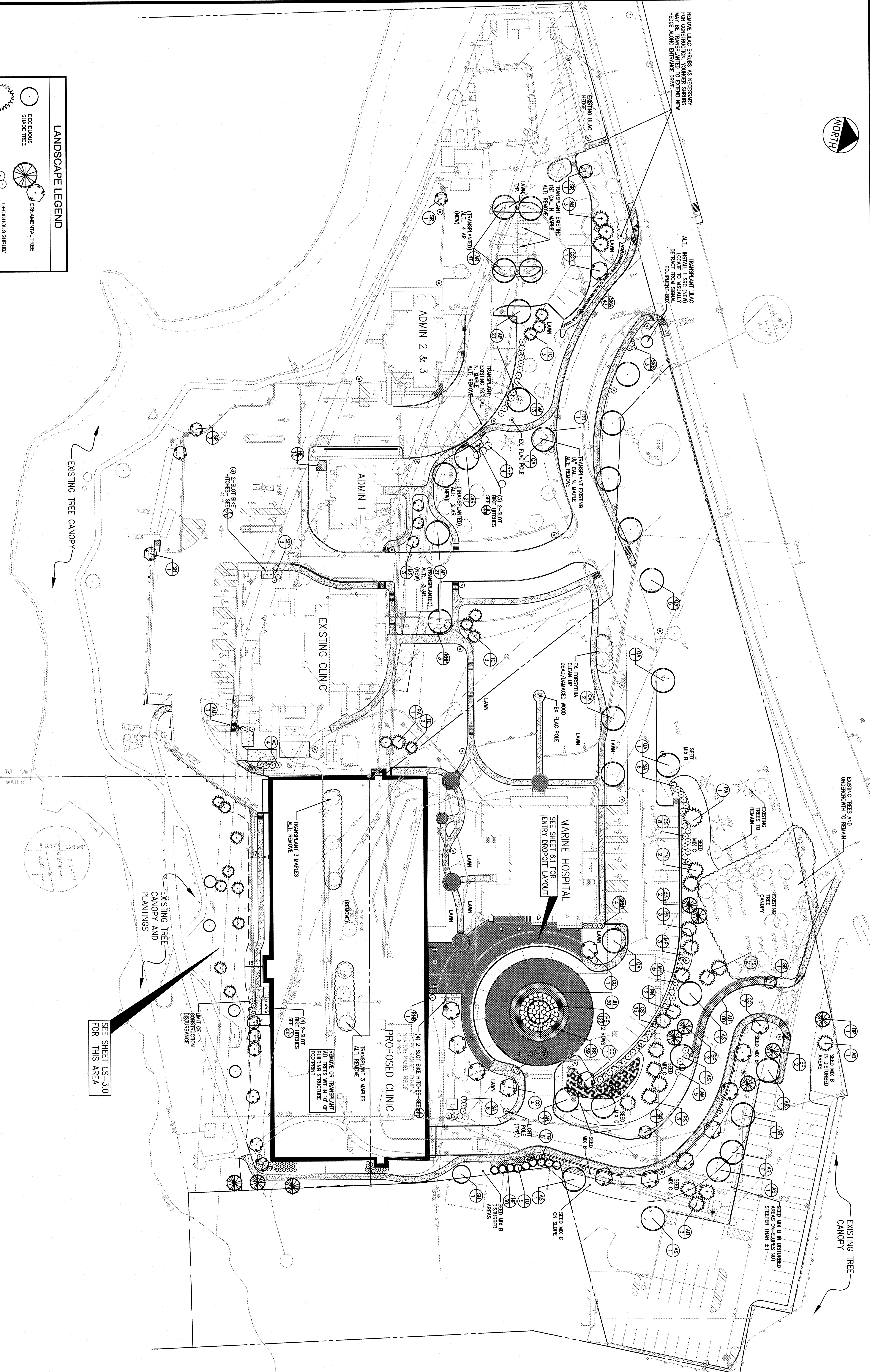


LANDSCAPE LEGEND	
	DECIDUOUS SHADE TREE
	EVERGREEN TREE
	ORNAMENTAL TREE
	DECIDUOUS SHRUB
	ORNAMENTAL SHRUB
	EVERGREEN SHRUB
	EXISTING TREES TO REMAIN
	EVERGREEN GROUND COVER
	FLOWERING PERENNIALS



SEE SHEET LS-20 FOR LANDSCAPE NOTES AND DETAILS

SEE SHEET LS-30 FOR THIS AREA

GRAPHIC SCALE
1 inch = 30 ft

PRELIMINARY NOT FOR CONSTRUCTION

KEY	QTY	BOTANICAL NAME	PLANT LIST	SIZE	ROOT	SPACING	REMARKS
AB	7	Abies balsamea	BAB	6-7 ft	BAB		transplanted on site
AP	47	Acacia saligna	BAB	1-12' cal.	BAB		transplanted on site
AR	5	Acacia saligna	BAB	2-12' cal.	BAB		5' cl. min. in 12' x 12' cal.
AR	57	Acacia saligna	BAB	3' cal.	BAB		5' cl. min. in 12' x 12' cal.
AS	5	Acacia saligna	BAB	2-2 1/2' cal.	BAB		5' cl. min. in 12' x 12' cal.
BP	7	Banksia integrifolia	BAB	6-10 ft	BAB		multi-trunked
BP	31	Banksia integrifolia	BAB	1-12' cal.	BAB		transplanted on site
CC	14	Cornus florida	BAB	2-2 1/2' cal.	BAB		5' cl. min. in 12' x 12' cal.
CK	8	Cornus florida	BAB	6-7 ft	BAB		multi-trunked
MS	3	Magnolia soulangeana	BAB	5-6 ft	BAB		
PA	2	Podocarpus neriifolia	BAB	6-7 ft	BAB		
PN	7	Podocarpus neriifolia	BAB	6-7 ft	BAB		
PS	7	Podocarpus neriifolia	BAB	6-7 ft	BAB		
QA	11	Quercus laevis	BAB	2-12' cal.	BAB		
SH	5	Shorea robusta	BAB	2-2 1/2' cal.	BAB		
SR	7	Syringa reticulata	BAB	1-12' cal.	BAB		planted in filament
TC	17	Taxus canadensis	BAB	6-7 ft	BAB		post-ferk
TO	9	Thuja occidentalis	BAB	5-6 ft	BAB		newly sited
UA	1	Ulmus americana	BAB	3-12' cal.	BAB		specimen
SHRUBS & ORNAMENTAL GRASSES							
AM	8	Amorpha canescens	BAB	2-4' ht.	cont. BAB	5.0 c.	
CS	23	Cornus sericea	BAB	2-4' ht.	cont. BAB	5.0 c.	
FG	5	Fragaria virginiana	BAB	1 ft	3 gal.	5.0 c.	
AP	8	Asplenium platyneuron	BAB	2-3' ht.	BAB	5.0 c.	
AP	8	Asplenium platyneuron	BAB	2-3' ht.	BAB	5.0 c.	
RHP	7	Rhus typhina	BAB	2-4' ht.	cont. BAB	5.0 c.	
RR	81	Rosa rugosa	BAB	18-24' ht.	cont.	4.0 c.	
SP	3	Spiraea xanthocarpa	BAB	2-4' ht.	cont. BAB	5.0 c.	
SRA	43	Syringa x pressiana	BAB	4-5 ft	BAB	2.0 c.	
SRB	7	Syringa x pressiana	BAB	2-4' ht.	BAB	4.0 c.	
SRC	1	Syringa x pressiana	BAB	4-5 ft	BAB	4.0 c.	
SS	14	Salix alba	BAB	2-4' ht.	cont. BAB	4.0 c.	
VC	4	Veronica spicata	BAB	2-4' ht.	cont. BAB	5.0 c.	
VM	13	Verbena x hybrid	BAB	2-4' ht.	cont. BAB	5.0 c.	
GROUND COVER & PERENNIALS							
AU	100	Arundo donax	BAB	1 gal.		2.0 c.	
DM	29	Dryopteris marginalis	BAB	1 gal.		3.0 c.	
HE	183	Hebe x exoniensis	BAB	3-4' ht.	1 gal.	2.0 c.	
JH	30	Juniperus horizontalis	BAB	15-18' ht.	2 gal.	5.0 c.	
MISCELLANEOUS							
		Spotted Bark Mahoe		3" depth			incl. tree & shrub water storage holes & specs

REV.	DATE	DESCRIPTION	REVISIONS
10	04.03.09	ISSUED FOR PERMITS AND PERMITTING	
9	03.03.09	PROGRESS SET	
8	02.03.09	FINAL SITE PLAN SUBMISSION TO CITY	
7	02.03.09	PERMITS SUBMISSION TO CITY	
6	01.29.09	PERMITS SUBMISSION TO CITY	
5	01.29.09	PERMITS SUBMISSION TO CITY	
4	01.29.09	PERMITS SUBMISSION TO CITY	
3	01.29.09	PERMITS SUBMISSION TO CITY	
2	01.29.09	PERMITS SUBMISSION TO CITY	
1	02.27.08	PERMITS SUBMISSION TO CITY	

PROJECT	MARTINS POINT REDEVELOPMENT PROJECT PHASE 2
CLIENT	MARTINS POINT HEALTH CARE
DESIGNED BY	DH
DATE	JUN 2009
SCALE	1" = 30'
SHEET	LS-10